

VOLUME 2, NUMBER 23  
May 3, 1972

# SOUTHERN CALIFORNIA RAPID TRANSIT DISTRICT



RTD STEAM BUS ON DISPLAY IN SACRAMENTO — Cornelius D. Dutcher, (far left) president, Steam Powers Systems, Inc., San Diego, explains the power plant of RTD's new steam bus to Bob Moretti, (2nd from left) Speaker of the California State Assembly. RTD's General Manager Jack R. Gilstrap and news media look on.

## RTD's Steam Powered Bus To Make L.A. Debut This Summer

A public transit bus powered by steam was demonstrated in Sacramento April 26 by RTD.

Members of the Legislature, including Speaker of the Assembly Bob Moretti, were shown the vehicle, which will be tested in Los Angeles area public transit service this summer.

A grant to the Assembly by the Urban Mass Transportation Administration of the federal Department of Transportation has made the program possible.

Jack R. Gilstrap, RTD general manager, said the prime goal of the effort, one of three steam bus testing projects under way in California, is to determine the feasibility of steam propulsion for city buses.

He also noted that the demonstration will permit the measuring of exhaust, emissions, smoke, odor, noise and engine performance under the demanding duty imposed on transit vehicles in the Los Angeles area.

## Board Approves Five Management Staff Promotions

The District's Board of Directors recently approved promotions for five members of the Management Staff as a result of organizational changes and management retirements.

George W. Heinle has been appointed Assistant Manager of Operations with responsibility for all Operating Departments. Heinle joined RTD in 1967 as principal design engineer and worked on design and operational features of a rapid transit system. Heinle has been associated with public transit for 23 years, much of which has been in management positions.

Jack T. Stubbs was appointed Director of Governmental Affairs and Labor Relations and is responsible for governmental affairs, labor relations and the Equal Employment Opportunities Program. Stubbs joined RTD in 1966 as Insurance Manager and has an active background in various administrative positions in private industry and with the State Legislature.

Continued on Page 4

"The steam bus program," Gilstrap added, "speaks to the concern of the District, as a 'citizen' in the community for the state of the environment. The threats of congestion of people and motor vehicles, pollution, and related social problems, force us to define our goals and to proceed with vigorous measures to provide relief."

RTD's general manager lauded federal and state officials for their contribution to the implementation of the project and the development of the steam power plant.

The Department of Transportation in an indication of the success of the steam bus progress to date, is granting an additional \$683,041 to the California Steam Bus Project to provide for upgrading the performance of the engines and to develop specifications for production prototypes.

Officials who have cooperated in the effort to test the bus include Carlos C. Villarreal, administrator of the Urban Mass Transportation Administration; Moretti; and John Burton, chairman of the Assembly Rules Committee.

Gilstrap observed that in the design of the power system, special emphasis has been placed on the development of innovative fail-safe devices for the safety of RTD customers and the public at large.

The transit vehicle used for the project — RTD ExtraCAR 6200 — was originally powered by a V-6 diesel engine with a rating of 255 horsepower. Steam Power Systems, Inc., San Diego, has reequipped the bus with a six cylinder reciprocating double-acting steam engine with a recorded 277 horsepower.

Continued on page 2

## Head of District's Transportation Department Retires

For the last three years Max Rise, general superintendent of transportation, has been one of the key executives keeping RTD buses moving every day in the District's four-county operating area.

On May 4th he retired and brought to a close a 35-year career in public transportation, one that started with him as a motorman for the Los Angeles Railway Company in 1937 and led to his being in charge of the District's Transportation Department.

With the outbreak of World War II, Rise interrupted his transportation career and entered the U.S. Merchant Marine. Following the war he returned to his job as a member of the Schedule Department. In 1960, he was named Superintendent of Schedules and in 1966 he became Assistant General Superintendent of Transportation.

Up to his retirement Rise was active in community service participating in the activities of the Inglewood Chamber of Commerce, the American Transit Association, the Los Angeles Transportation Club and the National Safety Council. He was especially active in the National Safety Council where he has been Chairman of the Projects and Research Committee, member of the Program Committee and a

Continued on Page 4

## RTD Active In Vice President's Youth Motivation Task Force

Representatives of the Southern California Rapid Transit District recently joined with other local businessmen in Los Angeles to participate in the Vice President's Youth Motivation Task Force at Bethune Junior High School, 155 West 69th Street, and the Thomas Edison Junior High School, 6500 South Hooper Ave.

The Youth Motivation Task Force, established by the National Alliance of Businessmen (NAB), helps disadvantaged youths. It is a unique partnership of business, labor and government, combining forces to attack the problem of jobs and job training at its roots — the classroom.

RTD's participation in the program included five employees going to Bethune and Thomas Edison Junior High Schools and relating their work experience to the students.

The group, headed by Bob Williams, deputy administrator-equal employment opportunities, included Mike Reyes, special events supervisor, Transportation Department; Albert Reyes, Jr., assistant cashier, Payroll and Accounting Department; Vic Muniz, stops and zones representative, Transportation Department; and Jesse Varrie, supervisor of reclamation and surplus material and equipment, Purchasing Department. Mike Reyes and Muniz are both ex-RTD Operators.

NAB is finding jobs in private industry for the chronically unemployed, the underemployed, locating summer jobs for needy youths, and carrying out other preventative programs

Continued on Page 4

## District Opens U.S. Savings Bond Drive

The 1972 U.S. Savings Bond Drive is officially underway according to the Drive's Chairman Bill Kendall.

"Remember when you were going to save a little money every payday," Kendall noted, "and something came up and you never got around to building your nest egg. Now you can save and invest in the easiest way ever devised. The securities are the safest you can buy. As safe as America itself."

"The plan is easy," he continued, "and your investment is safe because it is in government bonds. You can enroll for as low as \$1.25 per pay day or as much as you want. The government now pays 5½% interest on bonds held to their maturity — five years and ten months."

Continued on page 4

## Blood Donors! Check District Bulletin Boards

The Red Cross Bloodmobile will be traveling throughout the District in May and a list of its stops has been posted on all District bulletin boards.

Similar lists will be posted each month for the convenience of RTD blood donors. Don't forget to tell the Red Cross when donating blood, to credit donations to the District's Blood Bank.



# Steam Bus

Continued from Page 1

RTD's steam bus has been designed to provide a top speed of 65 miles per hour with all standard accessories in operation.

The SPS power system uses a steam generator instead of a traditional boiler and, accordingly, eliminates the possibility of dangerous rupture.

Steam is produced by heating the water in the steam generator by burning a petroleum fuel such as kerosene or diesel fuel in a manner similar to a home hot water heater. Even though using a fossil fuel, this power plant is inherently low polluting since as an external combustion system it has an abundance of air and achieves virtually complete combustion.

It was further explained that a system of automatic controls monitors power needs and governs the flow of fuel, air, and water in the bus to provide the required steam output.

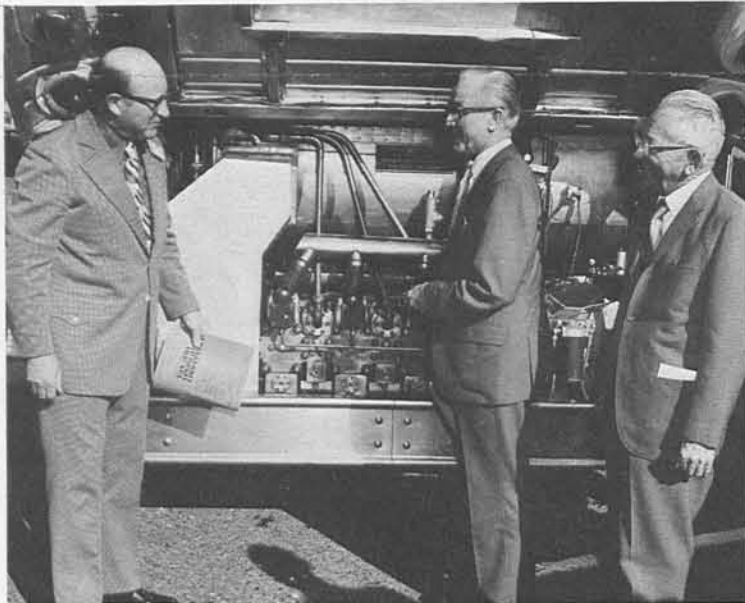
District officials said that the testing of the vehicle could determine whether steam buses can play an important role in reducing and possibly eliminating urban automotive smog.

Scientific Analysis Corporation, of San Francisco, is managing the three steam bus demonstrations being undertaken in the State.



MEMBERS OF STATE LEGISLATURE VIEW RTD'S STEAM POWERED BUS — Newsmen gather around Assembly Speaker Bob Moretti as he talks about the potential of steam powered buses in public transportation. Moretti, impressed

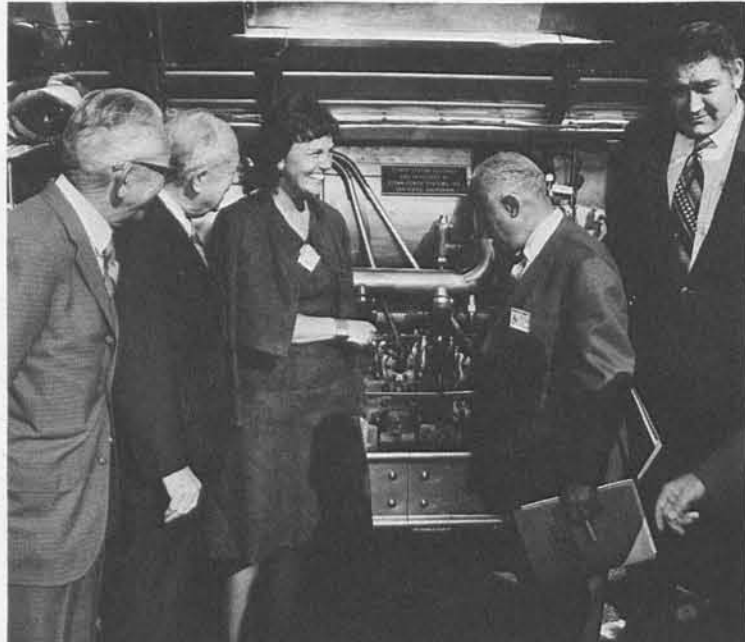
with the operation of RTD's newest addition to its bus fleet, told newsmen that the bus behind him would be in operation on the streets of Los Angeles by the end of summer.



STEAM — Los Angeles City Councilman Louis R. Nowell, (left) 1st District, discusses the feasibility of steam powered buses as part of Los Angeles public transportation with Dr. C. Erwin Piper (center) chief administrative officer for Los Angeles. RTD Director Herbert H. Krauch (right) looks on.



LOS ANGELES CITY COUNCILMAN THOMAS G. BRADLEY VIEWS RTD'S STEAM BUS — Councilman Thomas G. Bradley, 10th District, was one of the first viewers of RTD's new steam powered bus during its unveiling in Sacramento. Unveiled at the same time were two other steam powered buses which will operate in San Francisco and Oakland. All three buses will be operated under normal operations on city streets.

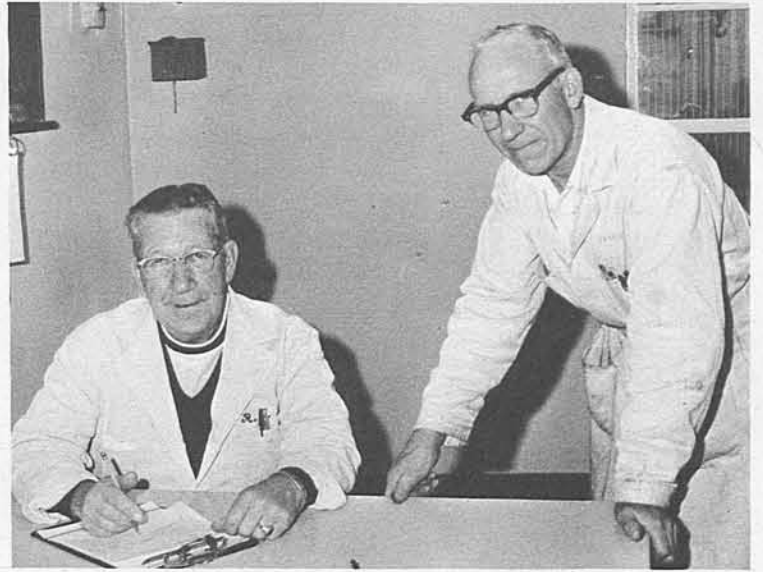


STEAM BUS — (left to right) RTD Directors Herbert H. Krauch and Charles E. Compton discuss steam as the power of RTD bus 6200 with Los Angeles City Councilmen Pat Russell, 6th District; Gilbert W. Lindsay, 9th District; and John Ferraro, 4th District.





Overall view of Division 12 from the 7th Street on ramp of the Long Beach Freeway.



Floyd Hughes, equipment superintendent I, who is in charge of Division 12's Maintenance Department, discusses daily work load with Harry Taggart, equipment Foreman I.



Manager of Division 12 Ralph Costello (standing) checks over daily runs with Division Clerk William Hawkins.

### Division 12

Division 12 is located at 970 W. Chester Place in Long Beach, just off the Long Beach Freeway's 7th Street on-ramp going north.

Frank Costello, a 32-year veteran of public transportation manages the division. He is responsible for the operating procedure at Division 12 and 187 employees.

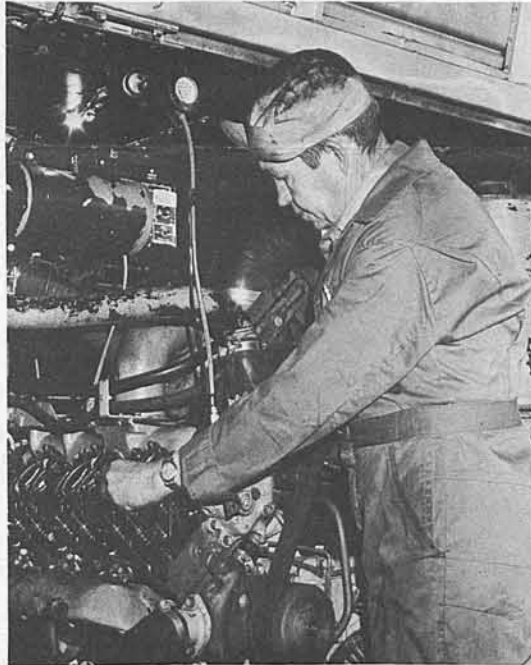
Floyd Hughes, equipment superintendent I, is responsible for the maintenance of the division's 118 buses. His 42-man work force handles all the minor repairs necessary to keep the buses rolling.



Division 12 buses receive expert care.



Virginia Fees, division stenographer, acts as Division Managers secretary and handles Division 12 correspondence.



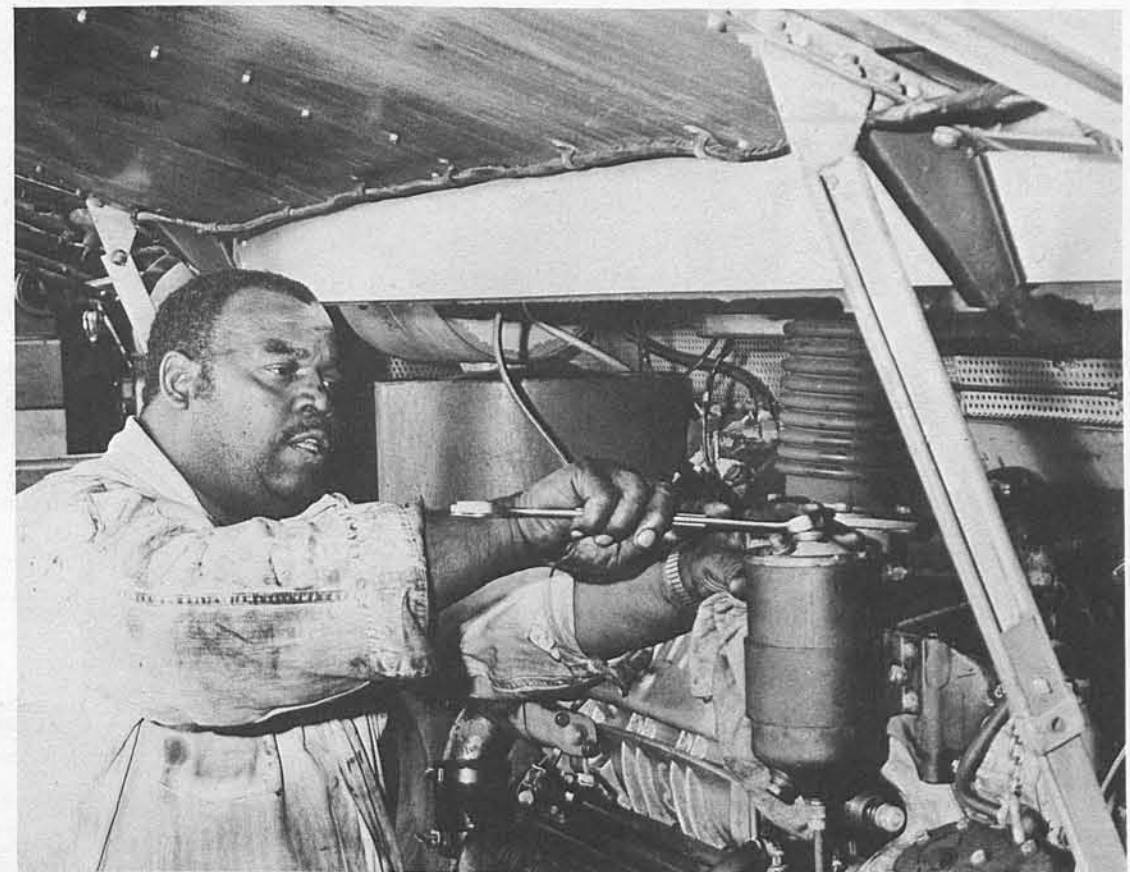
Carroll Sutton, Mechanic "A", finishes engine tune-up on a Class 5600 bus.



Bruno Falcon, Jr., Mechanic "A", uses vacuum to dry out air condition system.



Division 12 Instructor Elmer Stowe checks TD Notices.



Hazzie Searcy, Mechanic "A", changes the oil filter on a 5600 Class bus.



## PROMOTIONS AND REASSIGNMENTS

In recognition of their achievement and capabilities the following employees were recently reassigned.

**THOMAS R. BROWN**  
Manager Division 8 to Staff Assistant II

**ARCADIO R. DeLaCRUZ**  
Communication Manager to Transportation Planner

**LUTHER E. EDMONDSON**  
Division Clerk to Acting Assistant Division Manager at Division 3

**FLORIAN JANULEWICZ**  
Assistant Manager of Division 3 to Assistant Manager of Division 2

**GASPAR MARSALA**  
Extra Relief Assistant Division Manager to Acting Relief Assistant Manager

**WESLEY D. McCARNS**  
Assistant Manager of Division 2 to Acting Manager of Division 6

**JAMES J. McCULLOUGH**  
Assistant Manager of Division 2 to Acting Manager of Divisions 3 & 10

**GEORGE C. MICHAELS**  
Assistant Manager of Division 5 to Acting Manager of Division 8

**TEICHI NAMATAME**  
Staff Assistant I to Transportation Administrative Analyst

**SAMUEL J. OLIVITO, JR.**  
Community Representative II to Community Representative (Government)

**ALLAN W. STYFFE**  
Relief Assistant Division Manager to Assistant Manager of Division 2

**WELCHER A. ULLRICH**  
Manager of Divisions 3 & 10 to Manager of Division 9

**THOMAS D. WALKER**  
Division Clerk to Acting Assistant Manager of Division 5

**WOLFGANG WEICHERT**  
Operator to Operator-Extra Division Clerk

## RETIREMENTS

Climaxing many years of work in the field of public transportation, the following District employees recently retired:

**EDMUND J. CHRISTENSEN**  
Dispatcher  
Emp. 3-18-44/RETIRED: 4-14-72  
Years of Service: 28

**GUS M. GUNDERSON**  
Equipment Superintendent  
Emp. 3-22-37/RETIRED: 4-18-72  
Years of Service: 35

### RTD Directors

**DR. NORMAN TOPPING**,  
President  
**THOMAS G. NEUSOM**,  
Vice President  
Charles E. Compton  
A. J. Eyraud, Jr.  
Leonard S. Gleckman  
David K. Hayward  
Herbert H. Krauch  
Michael E. Macke  
Don. C. McMillan  
Douglas A. Newcomb  
Jay B. Price  
Virginia Rees, Secretary

Published by and for the employees of the Southern California Transit District.

**JACK R. GILSTRAP**  
General Manager  
**GEORGE F. GOEHLER**  
Manager of Operations  
**ROBERT R. SCHOLL**  
Director of Public Information  
**WILLIAM A. REASON**  
Editor

## Task Force

Continued from page 1

designed to help disadvantaged youth escape the cycle of poverty.

"As part of the program," noted Williams, "we bring youth in direct contact with successful businessmen and women they can relate with. Our purpose is to motivate the students to remain in school and to plan toward meaningful careers.

"Only with the support and involvement of the private sector," he concluded, "can these preventative programs be effectively implemented at the local level. Community support can be generated through the cooperation, assistance, and commitment of key local businessmen and educators serving on a joint industry-education committee."

For many years, disadvantaged youth have had a greater tendency to drop out of school than their more fortunate contemporaries. The disadvantaged-student drop-out rate represents an incalculable loss to both the labor force and our society. The student's lack of familiarity with the careers available to them and with the process of setting career goals is rooted in their environment and family.

Albert Reyes noted, "This was particularly true in the two groups of students I talked with. I also noted that disadvantaged youngsters, particularly those of our ethnic minorities, develop an early awareness of being shut out, unwanted and barred from normal chances of success in the work force."

Varrie concluded that, "for the first time, high school and college level students participating in the program come into personal contact with people with whom they can identify. Once motivated, these students show greater interest in their school work and in their role in society.

## Discount Tickets

Discount tickets are currently available in the District's Industrial Relations Office at 1060 S. Broadway on a first come first basis.

Information on the tickets can be obtained by calling 749-6977, ext. 269 or 288.

Regularly available are:

**KNOTTS BERRY FARM**  
Buena Park

**DISNEYLAND 1971**  
Anaheim

**MARINELAND**  
Palos Verdes Estates

**MOVIELAND WAX MUSEUM**  
**PALACE OF LIVING ART**  
Buena Park

**MAGIC MOUNTAIN**  
Valencia

**LION COUNTRY SAFARI**  
Irvine Ranch

(IMPRINT OR TYPE EMPLOYEE'S NAME HERE) (Check or Badge Number) (Dept. or Section)

I hereby authorize my employer \_\_\_\_\_ (Name of company or organization)

to save \$\_\_\_\_\_ from my pay each payday, beginning \_\_\_\_\_, 19\_\_\_\_.

When these savings equal the cost of the bond I check here, have bond issued to me registered as shown below.

\$50 Bond Cost \$37.50     \$75 Bond Cost \$56.25     \$100 Bond Cost \$75.00     \_\_\_\_\_ (Other size bond)    \$25 Bond Cost \$18.75    \$200 Bond Cost \$150    \$500 Bond Cost \$375

Please register my bonds in this manner:

**OWNER**  
Mr. \_\_\_\_\_  
Mrs. \_\_\_\_\_  
Miss. \_\_\_\_\_ (First) (Middle) (Last) (Social Security No.)  
Address \_\_\_\_\_ (Street) \_\_\_\_\_ (City) \_\_\_\_\_ (State) \_\_\_\_\_ (Zip)

**CO-OWNER**  **OR BENEFICIARY** (Check only one, if either is desired)

Mr. \_\_\_\_\_  
Mrs. \_\_\_\_\_  
Miss. \_\_\_\_\_ (First) (Middle) (Last) (Social Security No.)

NOTE: The Purchaser may, if desired, designate an individual as co-owner or beneficiary to be named on the Bond—but not both. Married women should use given name. (Mrs. Mary L. Smith, not Mrs. John A. Smith.)

This authorization will continue until I advise you to change or cancel it.

\_\_\_\_\_  
(Date) (Signature of Employee-Purchaser)

## Promotions

Continued from page 1

John S. Wilkens was named General Superintendent of Transportation, responsible for the Transportation and Personnel Departments. Wilkens joined the District in 1958 bringing with him an extensive background in transit management. He has held management positions in transportation as well as industrial relations positions with both RTD and predecessor companies.

John T. (Johnny) Johnston was named Superintendent of Transportation and is responsible for the functions of the Transportation Department. He has a 35-year career in public transportation, starting as a motorman with the Pacific Electric Railway.

Byron Lewis has been named Director of Personnel and will be responsible for all personnel and employee welfare programs. Lewis has an extensive background in personnel work with the District, the California State Department of Education and the Chancellor's Office of California State Colleges.

## New Assistant General Counsel

Mrs. Suzanne Gifford has been appointed assistant general counsel for the District.

Mrs. Gifford will be dealing with a wide range of legal matters incidental to the District's operations.

Prior to her appointment, she was a deputy city attorney in Pasadena. A graduate of the University of Michigan's Law School, Mrs. Gifford became a member of the California Bar in 1964.

## Rise Retires

Continued from page 1

member of the Motor Transportation Section of the Instruction and Training Committee.

Rise and his wife Ida have scheduled an active retirement with trips throughout North America in an air stream trailer this summer, a trip to Canada, a trip to Mexico for Christmas and possibly a six month trip to Australia next year.

## Give Blood

## Savings Bonds

Continued from page 1

U. S. Savings Bonds are not subject to state and local income taxes and no federal income tax need be paid until the bonds are redeemed.

For the convenience of RTD employees the above form can be filled out and sent by company mail to Bill Kendall in Room 606 at the District's downtown headquarters or given to the employees supervisors. The first payroll deduction would be June 3.

## RTD's Park-Ride Facility A Success



RTD SPECIAL — Customers line up to board RTD's Convention Center Park-Ride special. Passengers drive to the Convention Center parking area, or ride with someone, and use a special monthly pass for parking and the bus ride.

Park-Ride facilities at the Convention Center are almost filled up. Less than 100 of the 600 available spaces remain and Charlet Haudenschild,

RTD's deputy administrator-planning and real estate, who is handling the Park-Ride project, says these will probably be gone by the end of June.

**Southern California Rapid Transit District**  
1060 South Broadway, Los Angeles 90015

U. S. POSTAGE  
paid  
BULK RATE  
Los Angeles, Calif.  
Permit No. 28201

4 7082 4200  
BARNES F C  
5126 NOBLE AVE  
SHERMAN OAKS, CALIF 91403