

PREPARED BY:
Alta Planning + Design
PREPARED FOR:
County of Los Angeles Public Works



County of Los Angeles

Bicycle Master Plan

Atlas of Proposed Bikeways - October 2011





Figure 3-1: Los Angeles County Index of Planning Area Maps

Los Angeles County Bicycle Master Plan

Source: Los Angeles County (2011)
Date: 10/05/11

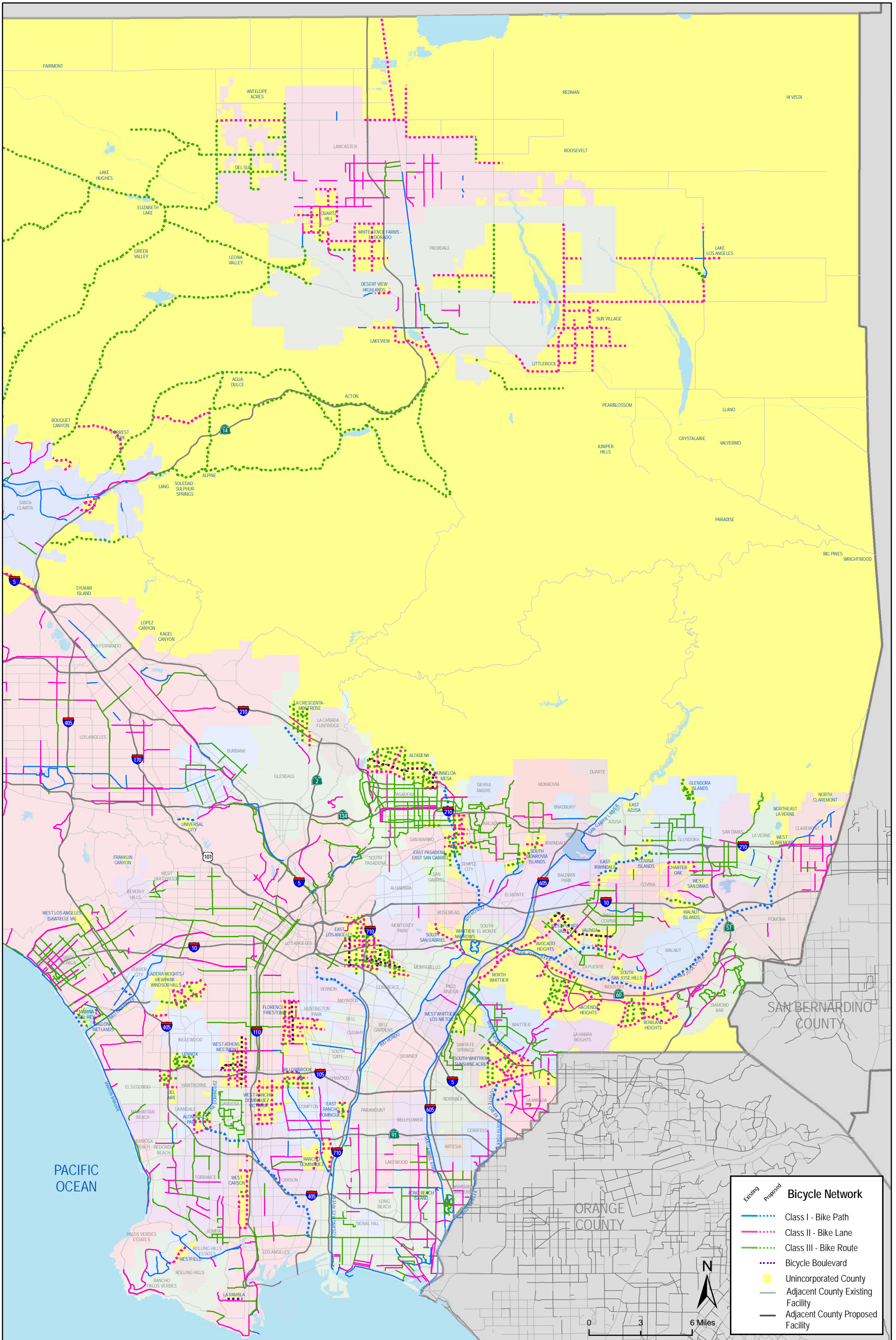


Figure 3-5: Eastern Los Angeles County Proposed Bicycle Network

Los Angeles County Bicycle Master Plan

Source: Los Angeles Metro (2006; 2010); Alta Planning + Design (2010)
Date: 1/30/2011

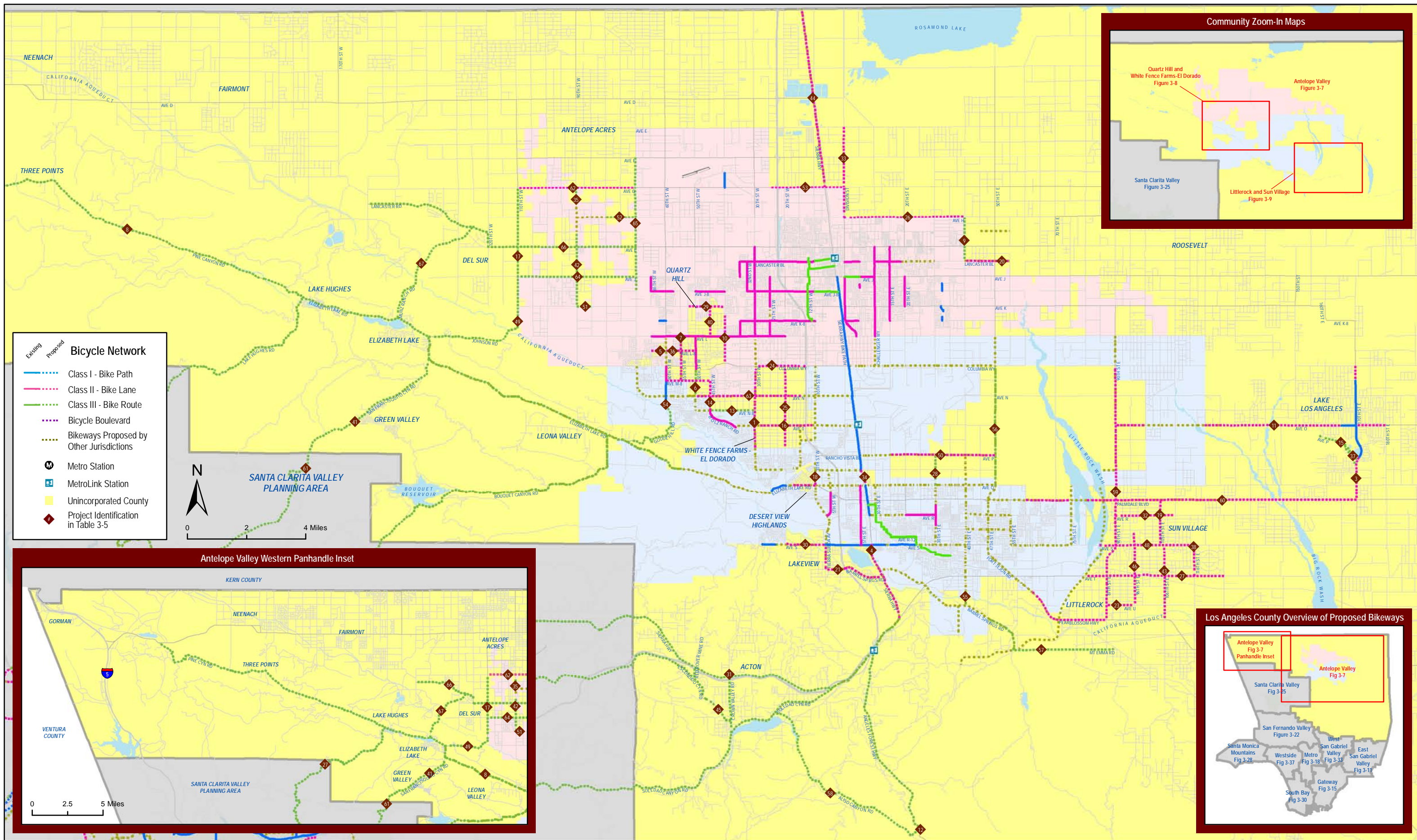


Figure 3-7: Antelope Valley Planning Area Proposed Bicycle Facilities

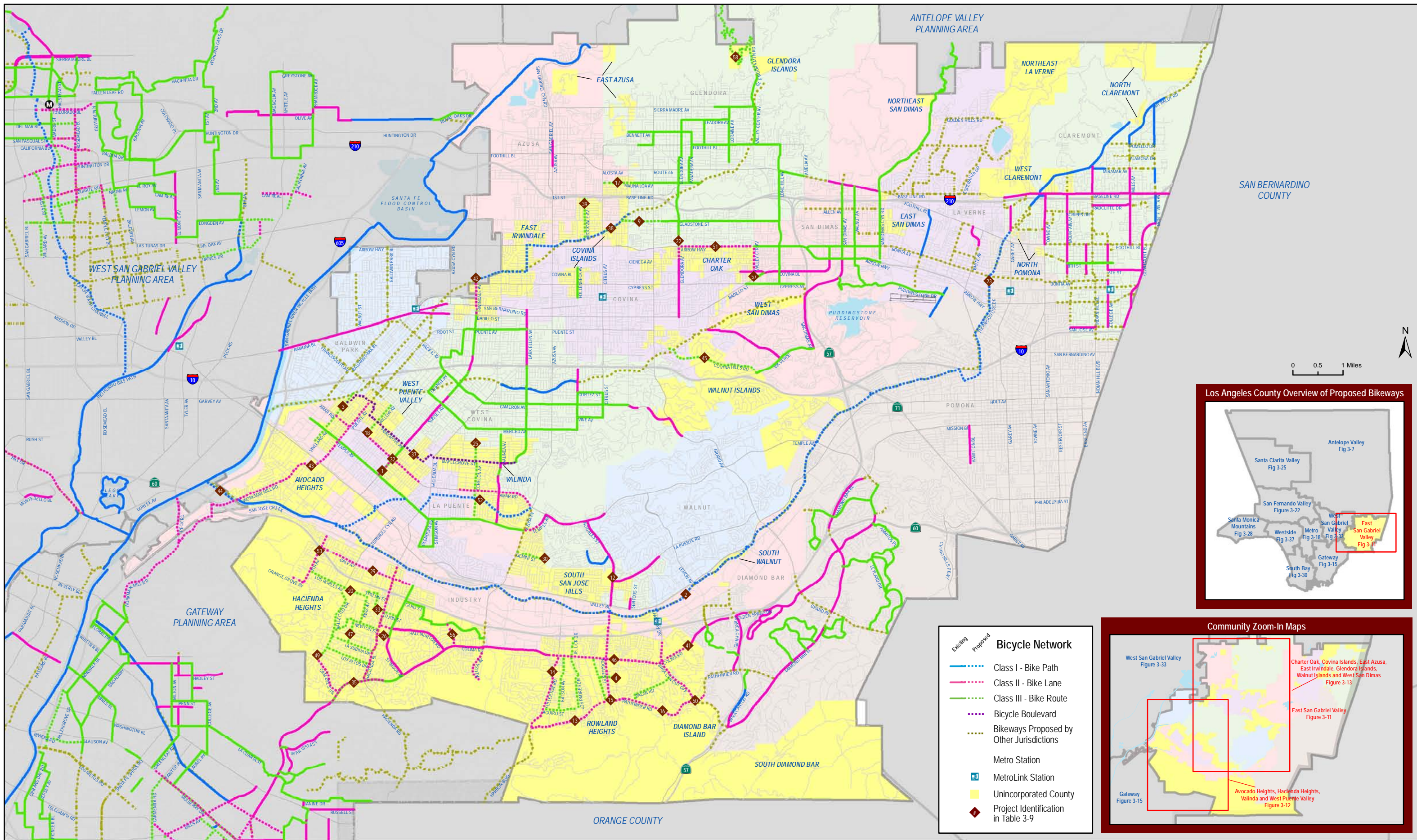


Figure 3-11: East San Gabriel Valley Planning Area Proposed Bicycle Facilities

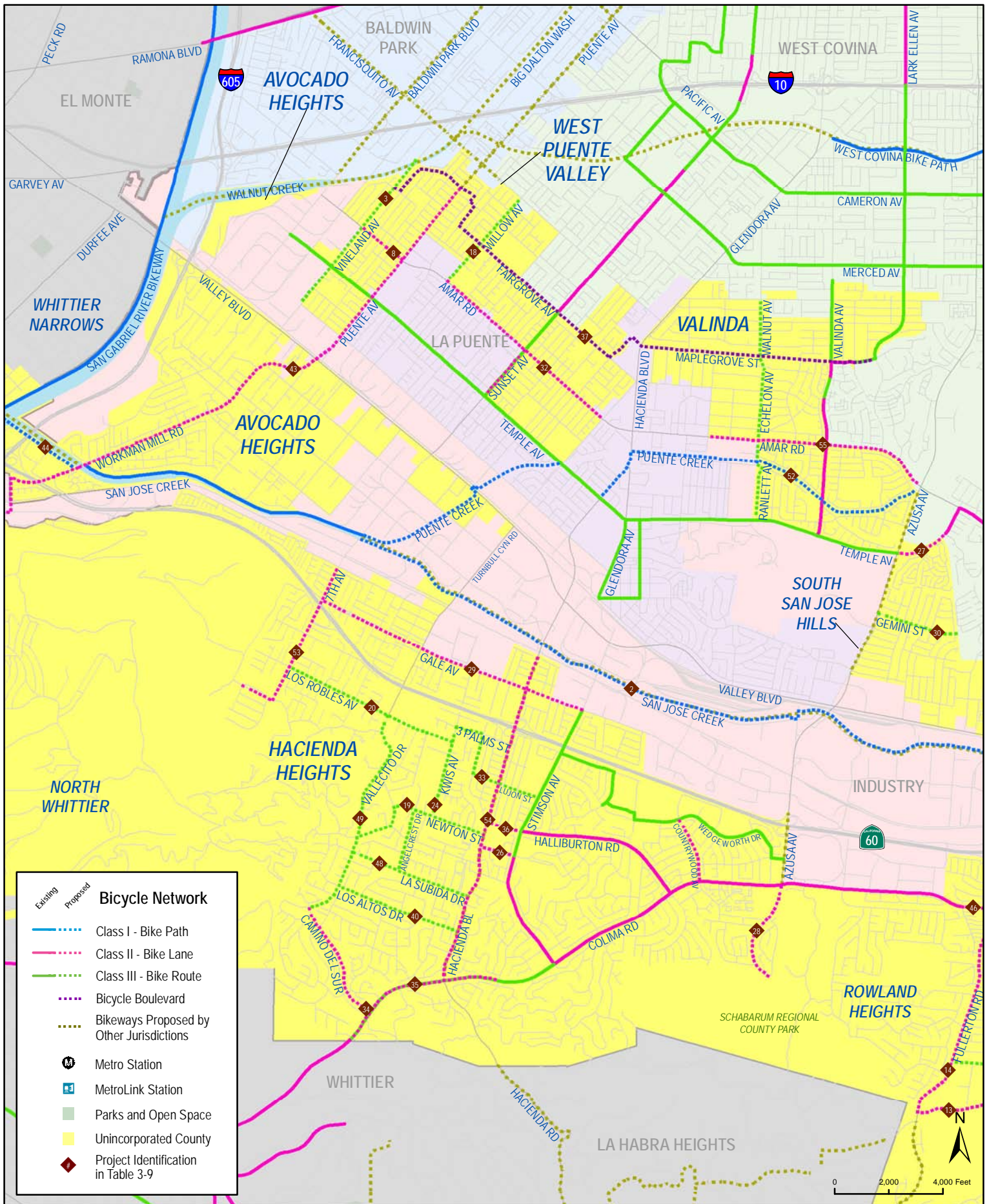


Figure 3-12: Avocado Heights, Hacienda Heights, Valinda and West Puente Valley Proposed Bicycle Facilities

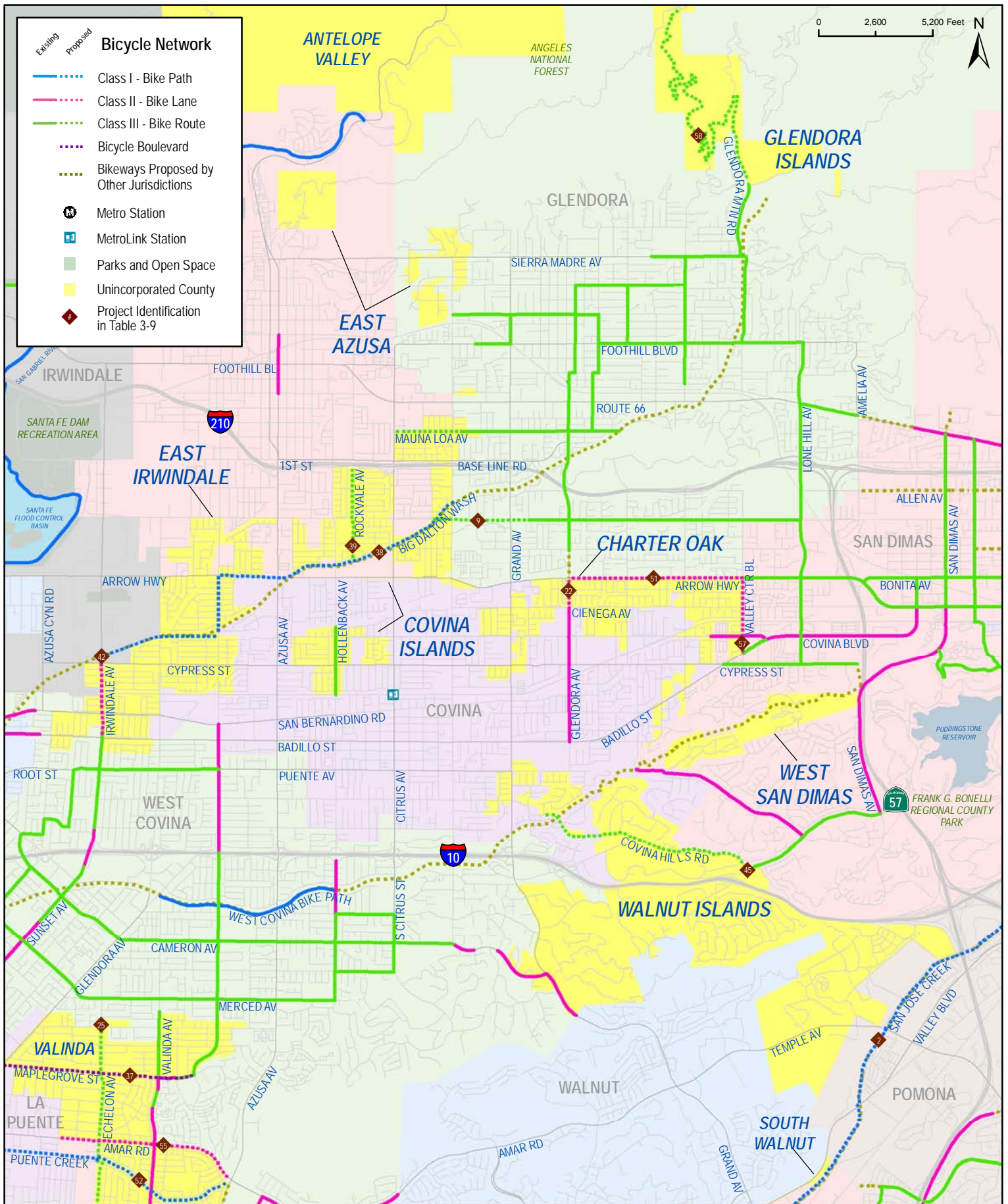


Figure 3-13: Charter Oak, Covina Islands, East Azusa, East Irwindale, Glendora Islands, Walnut Islands and West San Dimas Proposed Bicycle Facilities

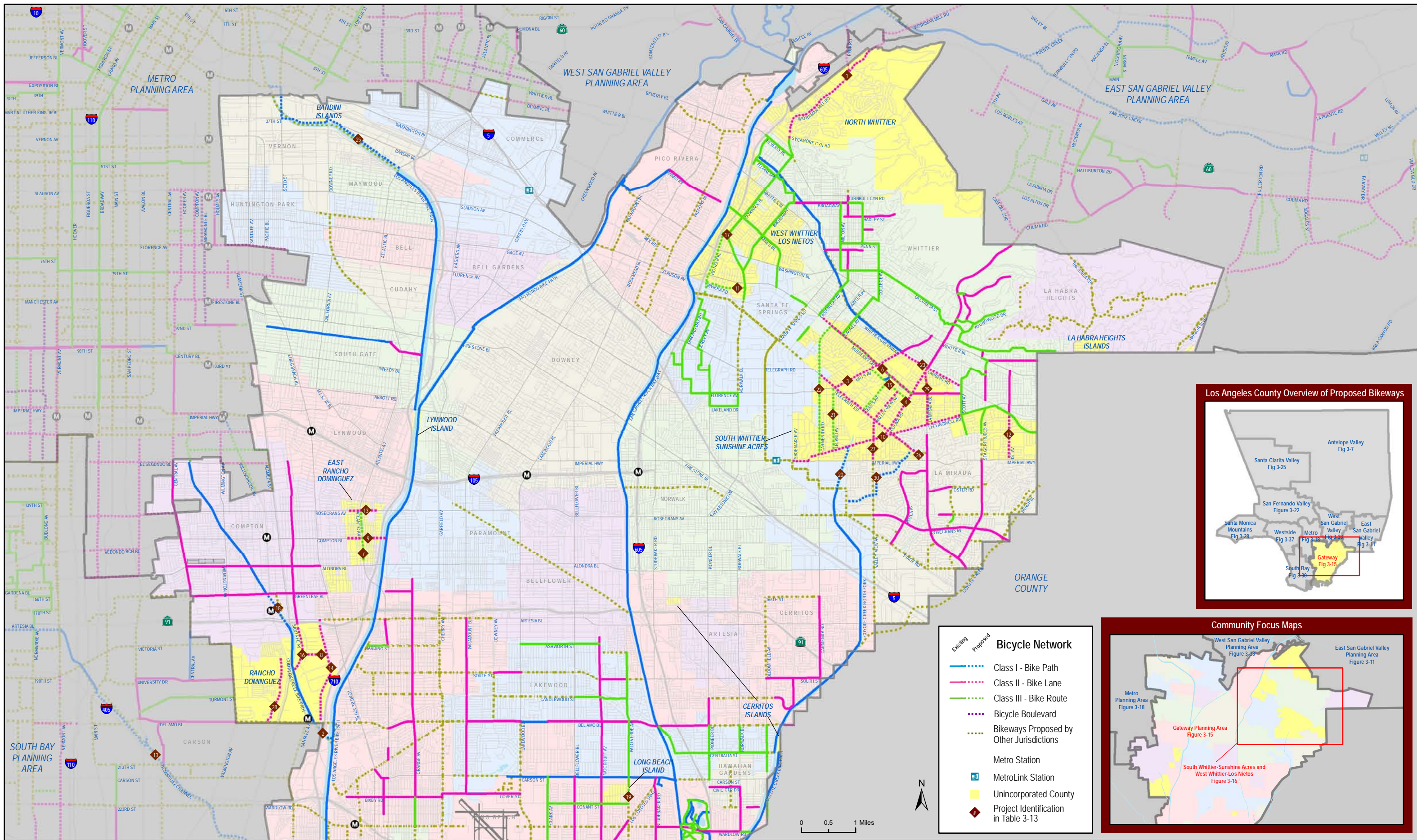


Figure 3-15: Gateway Planning Area Proposed Bicycle Facilities

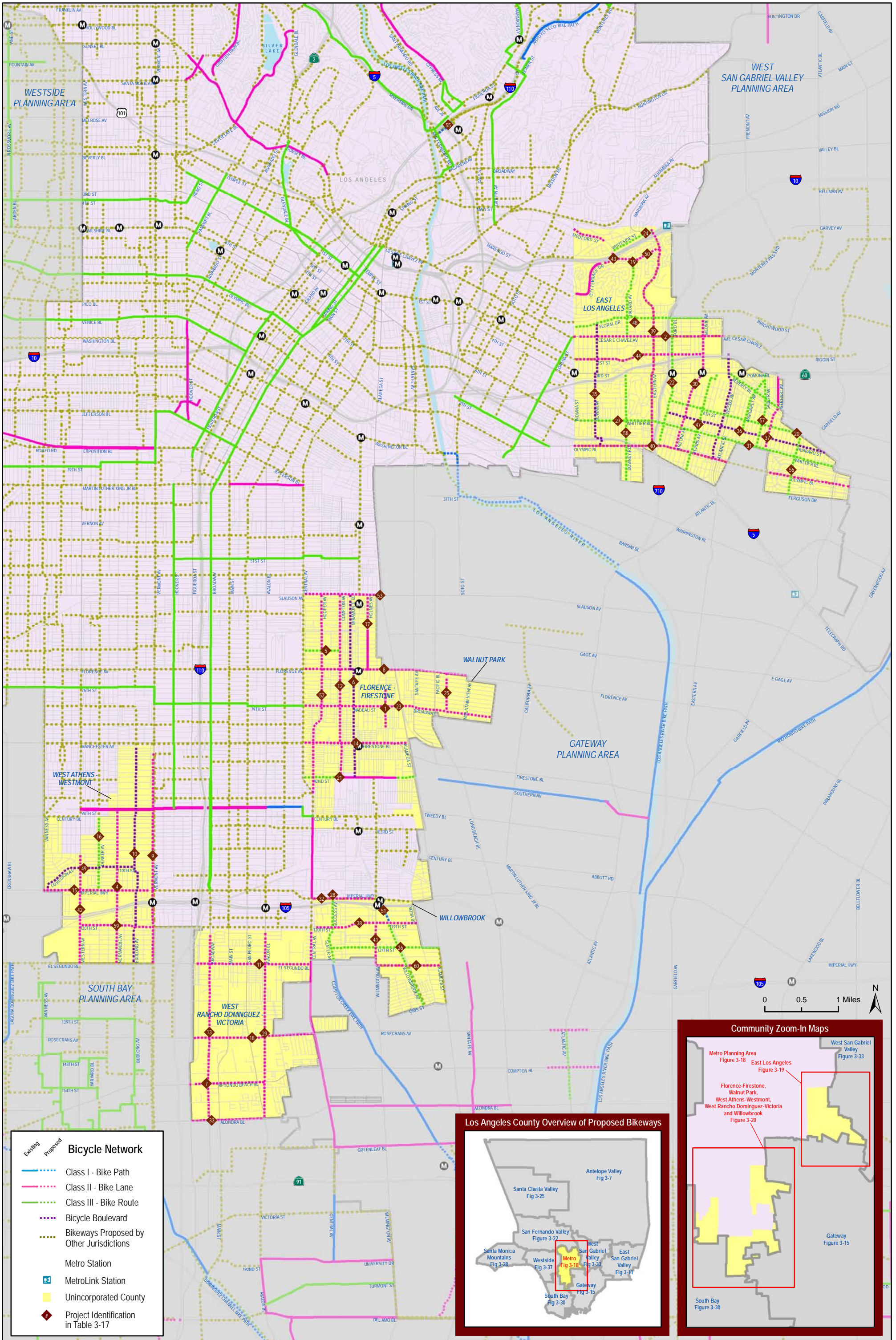


Figure 3-18: Metro Planning Area Proposed Bicycle Facilities

Los Angeles County Bicycle Master Plan

Source: Los Angeles Metro (2006; 2010); Alta Planning + Design (2010)
Date: 10/13/11

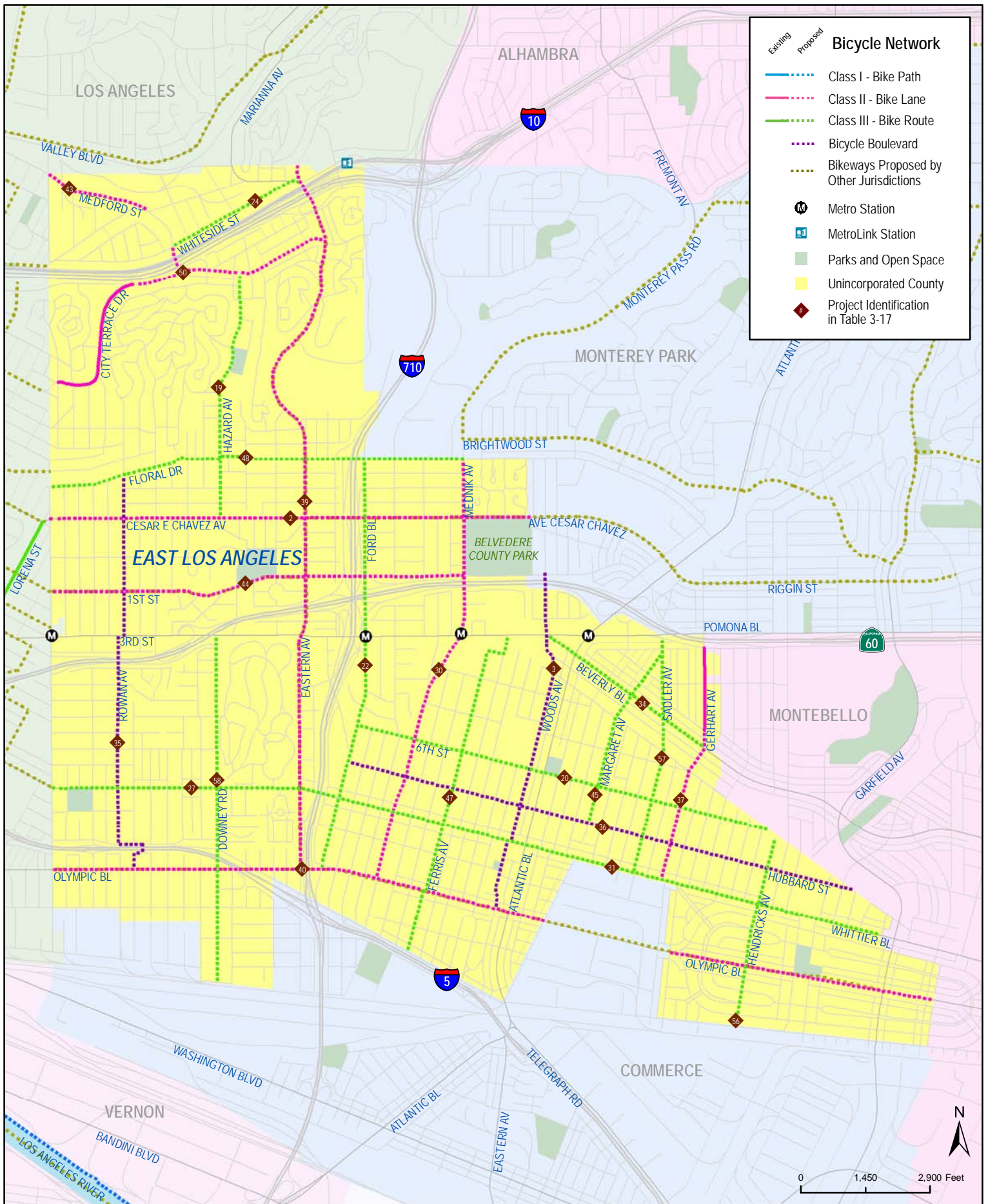


Figure 3-19: East Los Angeles Proposed Bicycle Facilities

Los Angeles County Bicycle Master Plan

Source: Los Angeles Metro (2006; 2010); Alta Planning + Design (2010)
Date: 10/13/11

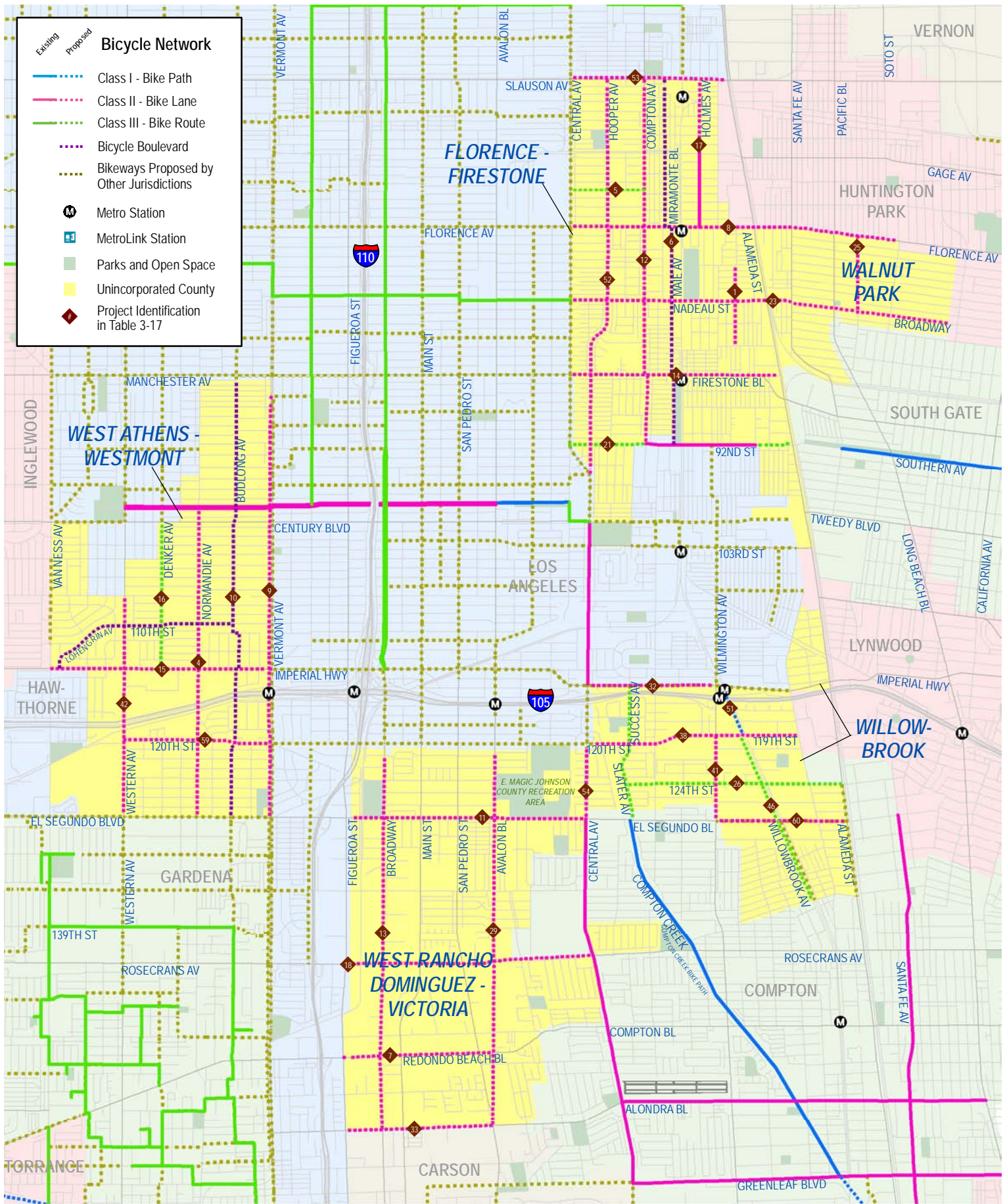


Figure 3-20: Florence-Firestone, Walnut Park, West Athens-Westmont, West Rancho Dominguez-Victoria and Willowbrook Proposed Bicycle Facilities

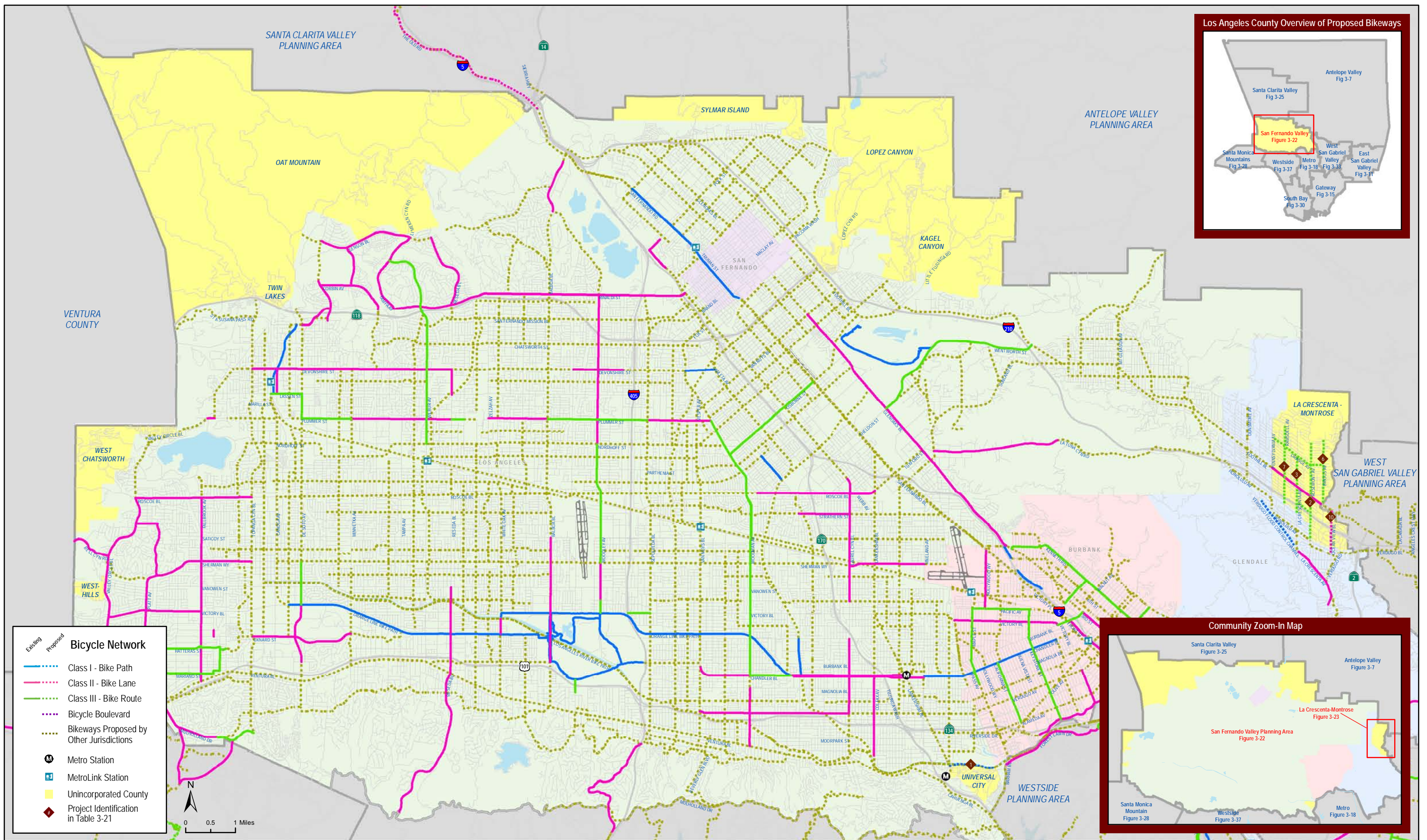


Figure 3-22: San Fernando Valley Planning Area Proposed Bicycle Facilities

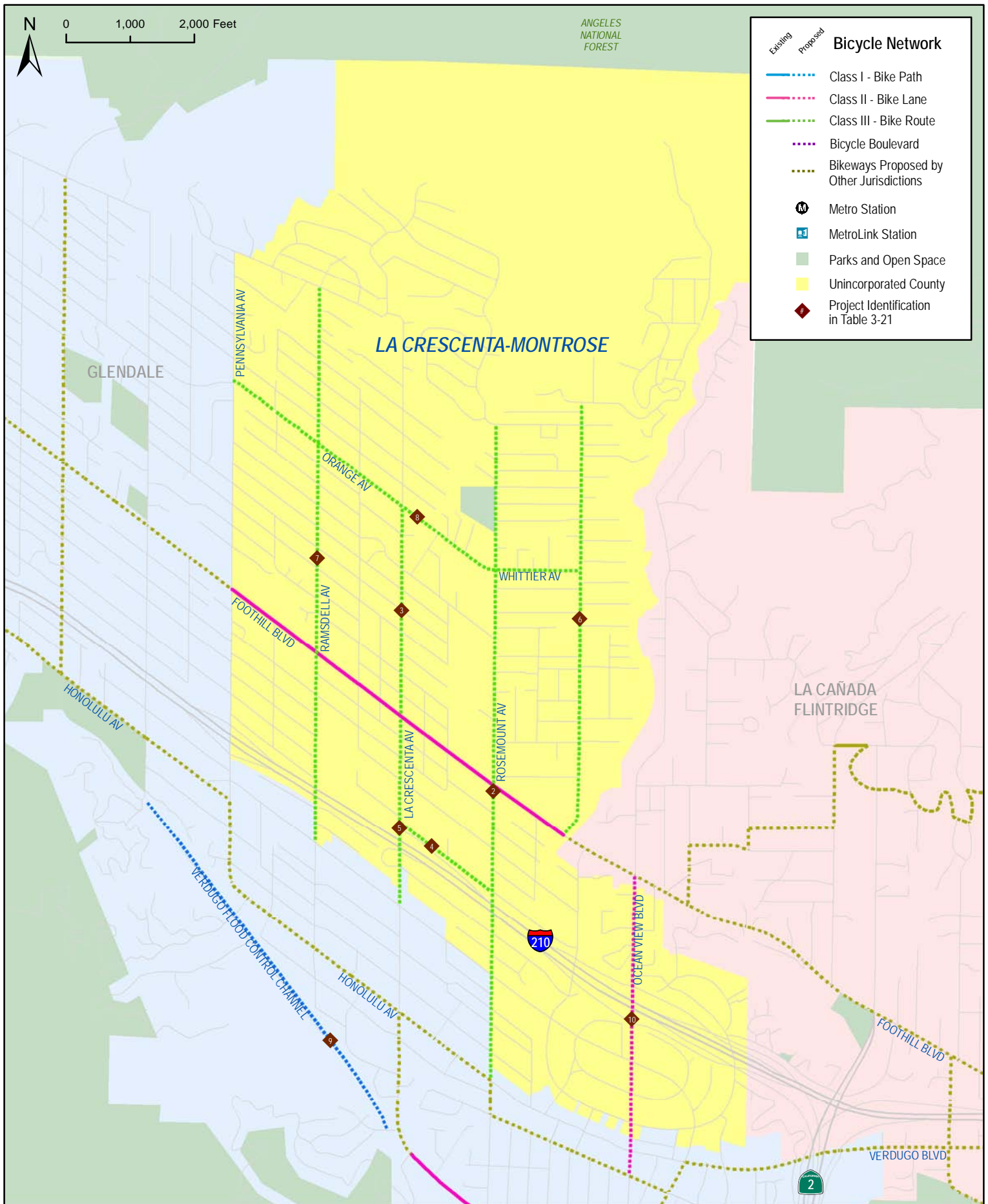


Figure 3-23: La Crescenta-Montrose Proposed Bicycle Facilities

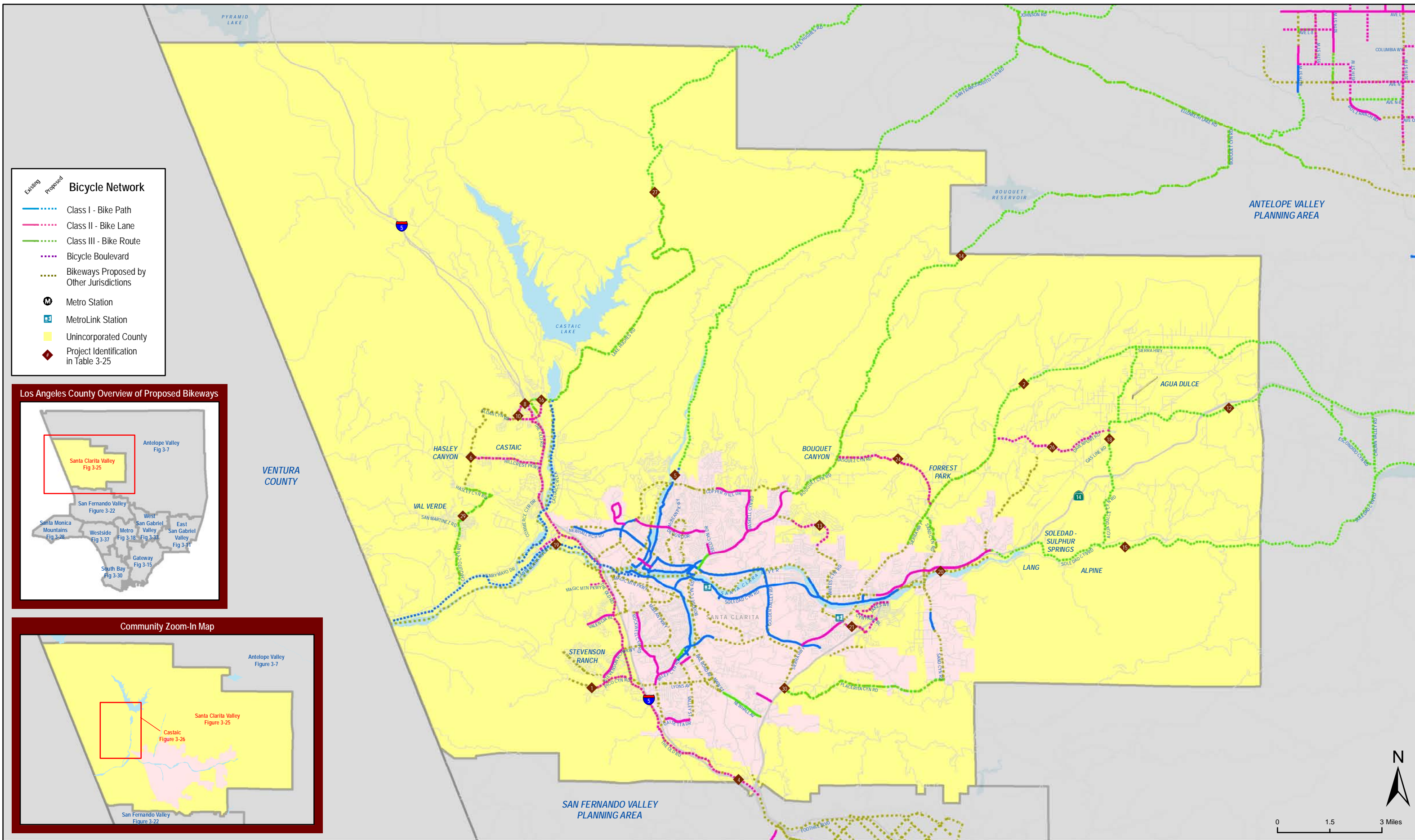


Figure 3-25: Santa Clarita Valley Planning Area Proposed Bicycle Facilities

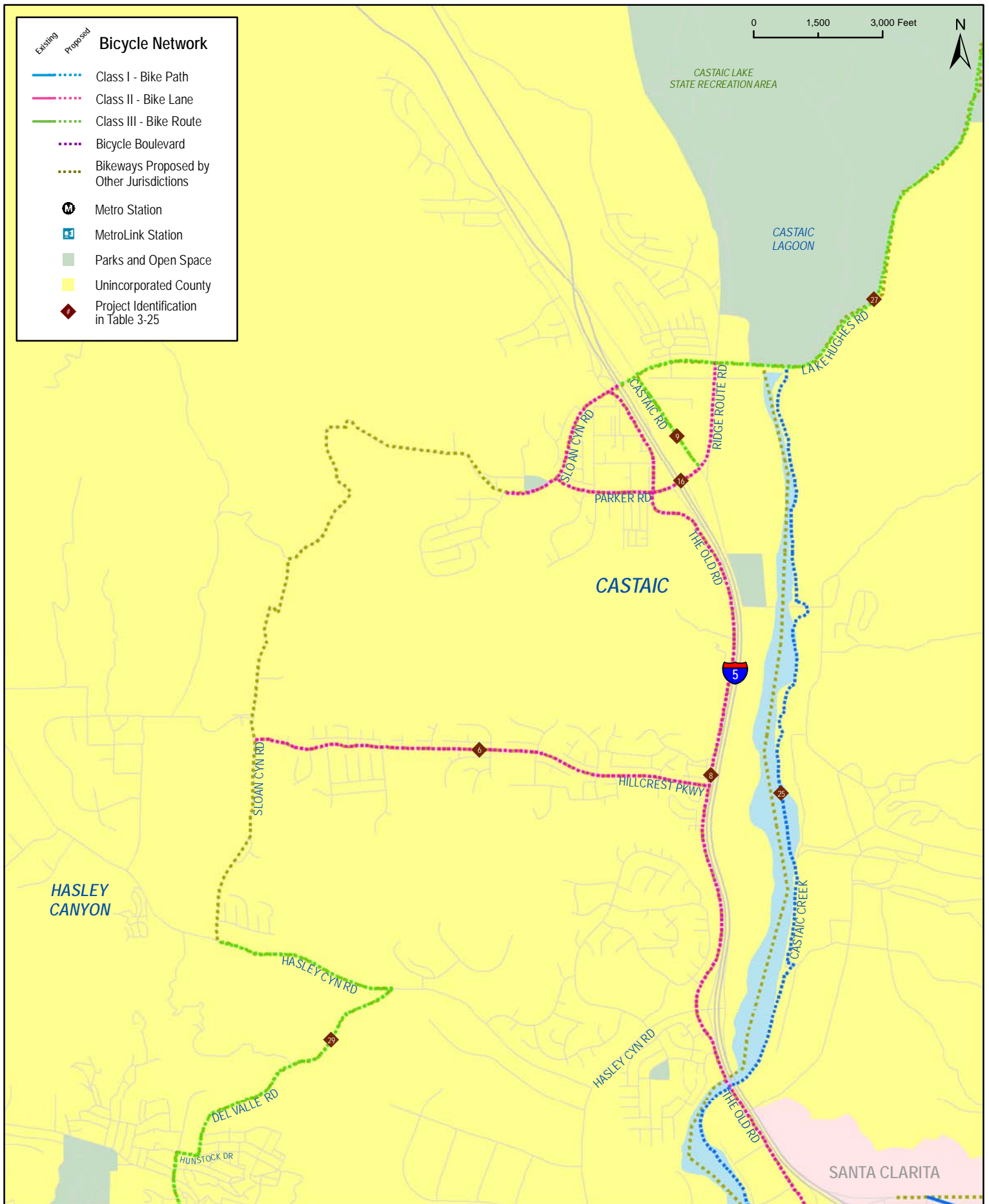
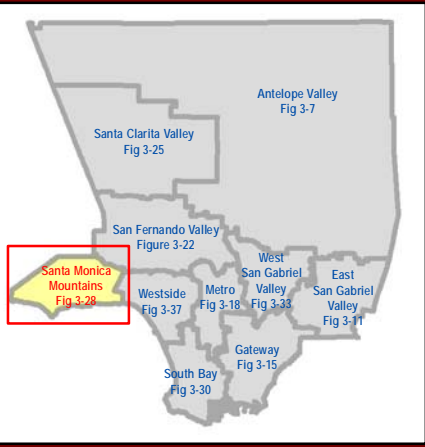


Figure 3-26: Castaic Proposed Bicycle Facilities

Los Angeles County Bicycle Master Plan

Source: Los Angeles Metro (2006; 2010); Alta Planning + Design (2010)
Date: 10/13/11

Los Angeles County Overview of Proposed Bikeways



Bicycle Network

- Existing Proposed
- Class I - Bike Path
- Class II - Bike Lane
- Class III - Bike Route
- Bicycle Boulevard
- Bikeways Proposed by Other Jurisdictions
- Metro Station
- MetroLink Station
- Unincorporated County
- Project Identification in Table 3-29

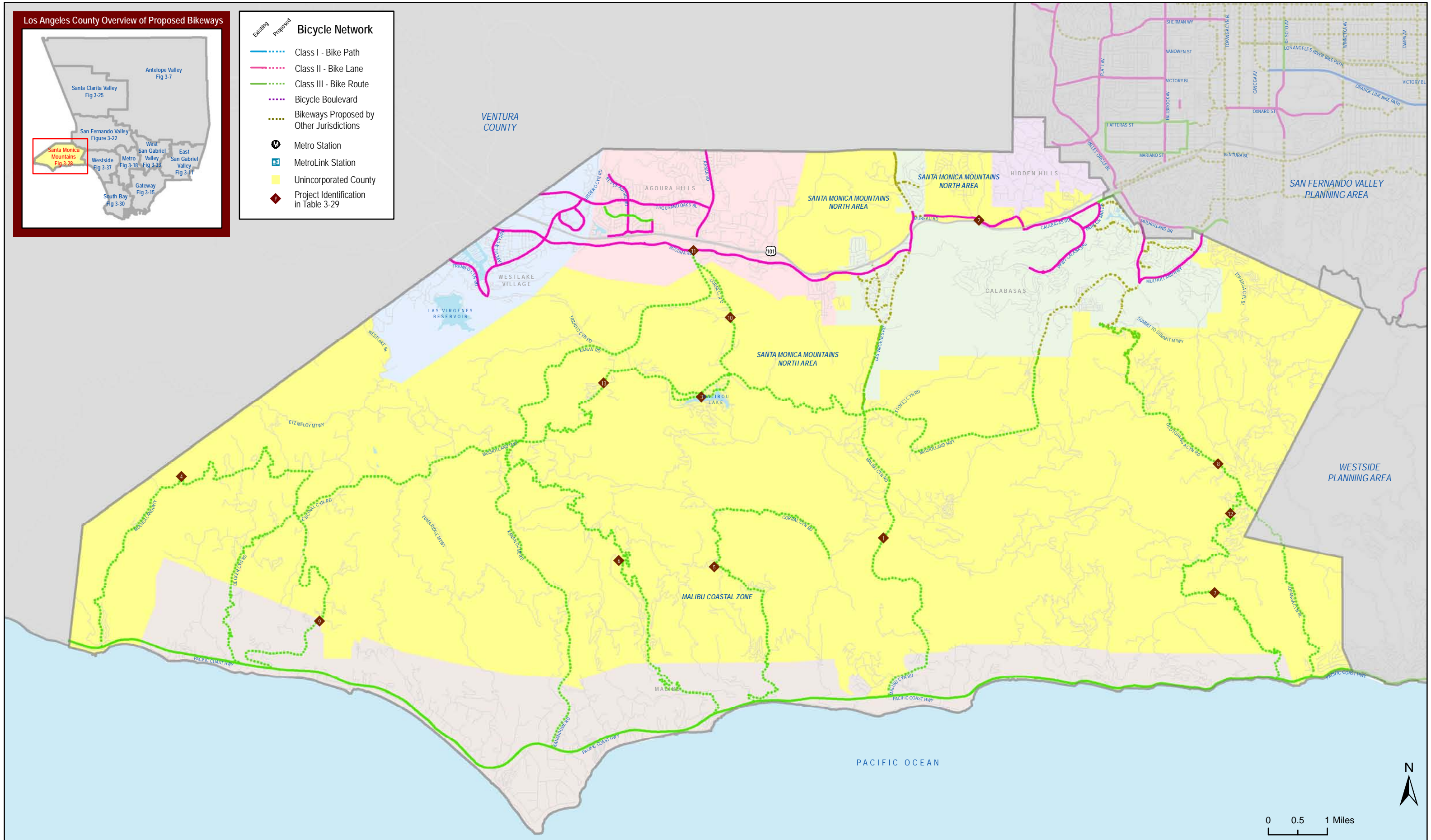


Figure 3-28: Santa Monica Mountains Planning Area Proposed Bicycle Facilities

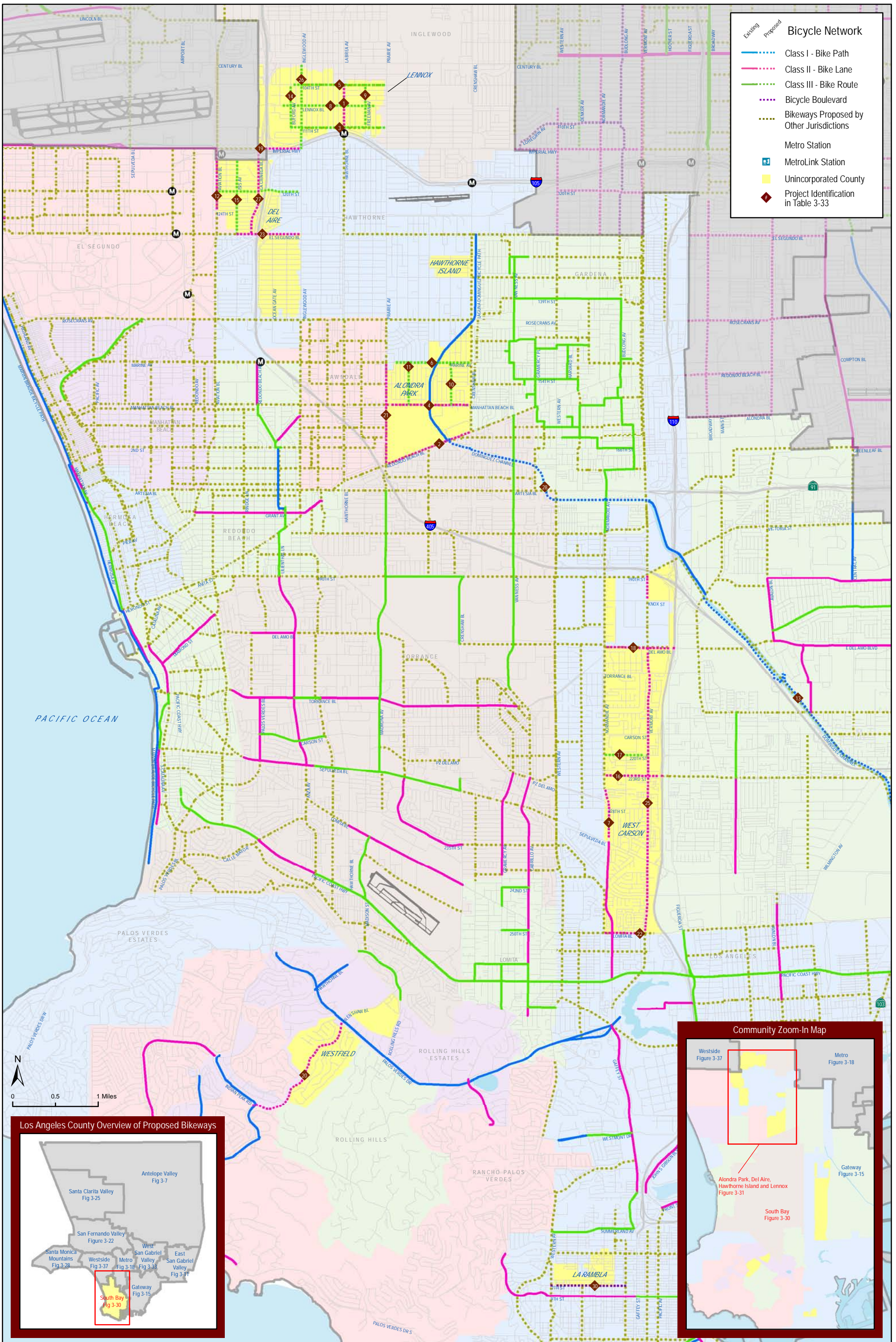


Figure 3-30: South Bay Planning Area Proposed Bicycle Facilities

Los Angeles County Bicycle Master Plan

Source: Los Angeles Metro (2006; 2010); Alta Planning + Design (2010)
Date: 1/30/2011

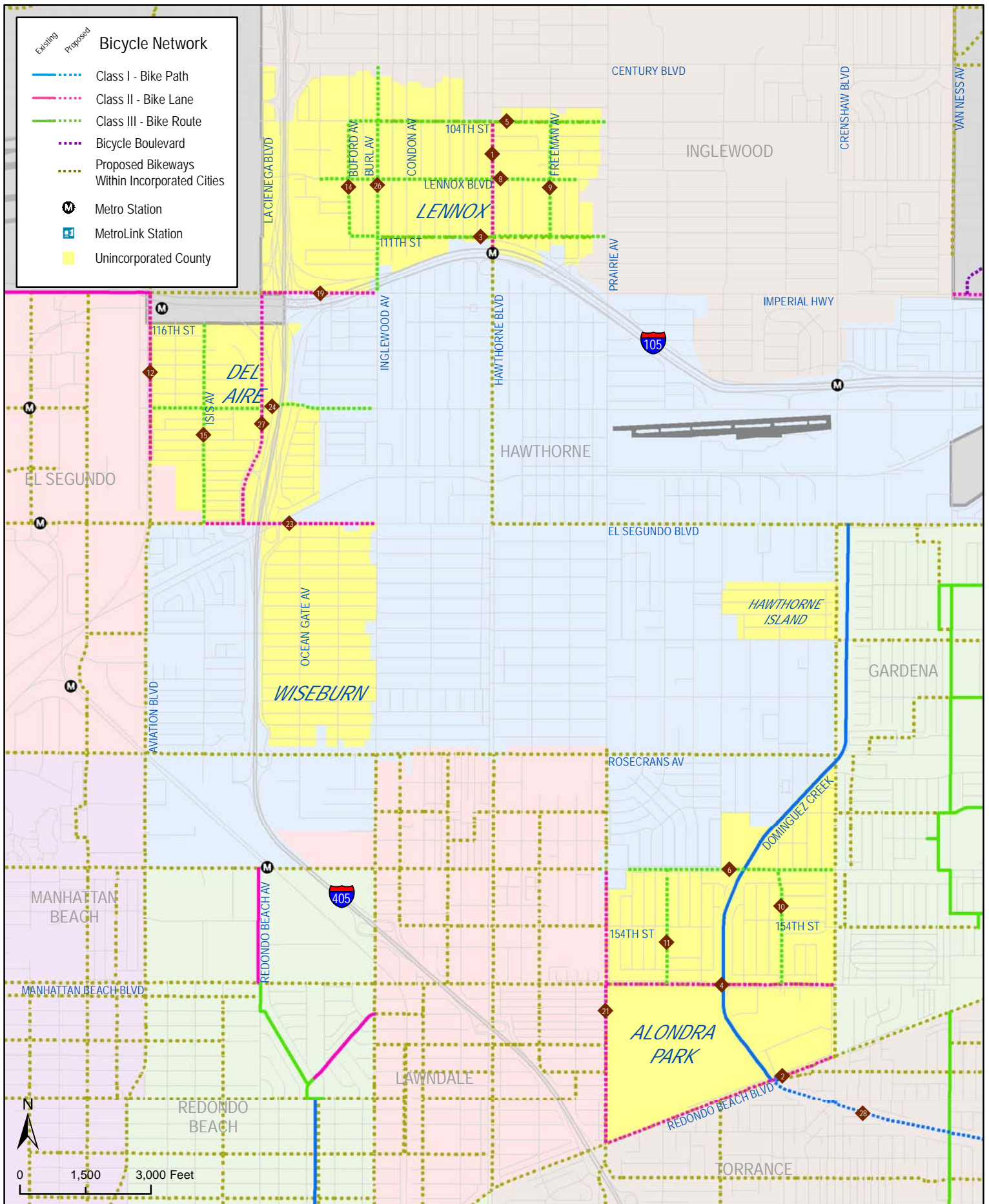


Figure 3-31: Alondra Park, Del Aire, Hawthorne Island and Lennox Recommended Bicycle Facilities

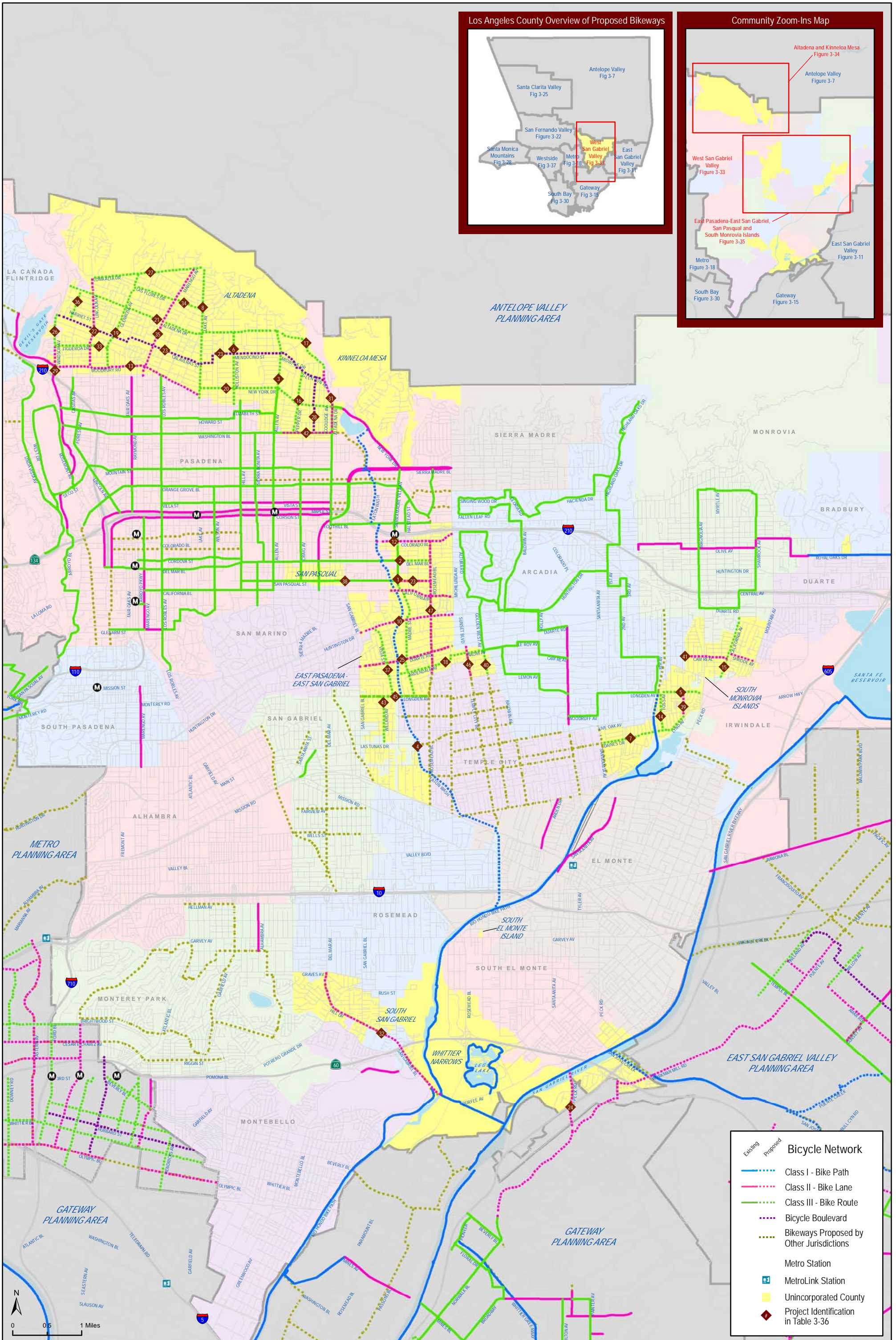


Figure 3-33: West San Gabriel Valley Planning Area Proposed Bicycle Facilities

Los Angeles County Bicycle Master Plan

Source: Los Angeles Metro (2006; 2010); Alta Planning + Design (2010)
Date: 10/13/11

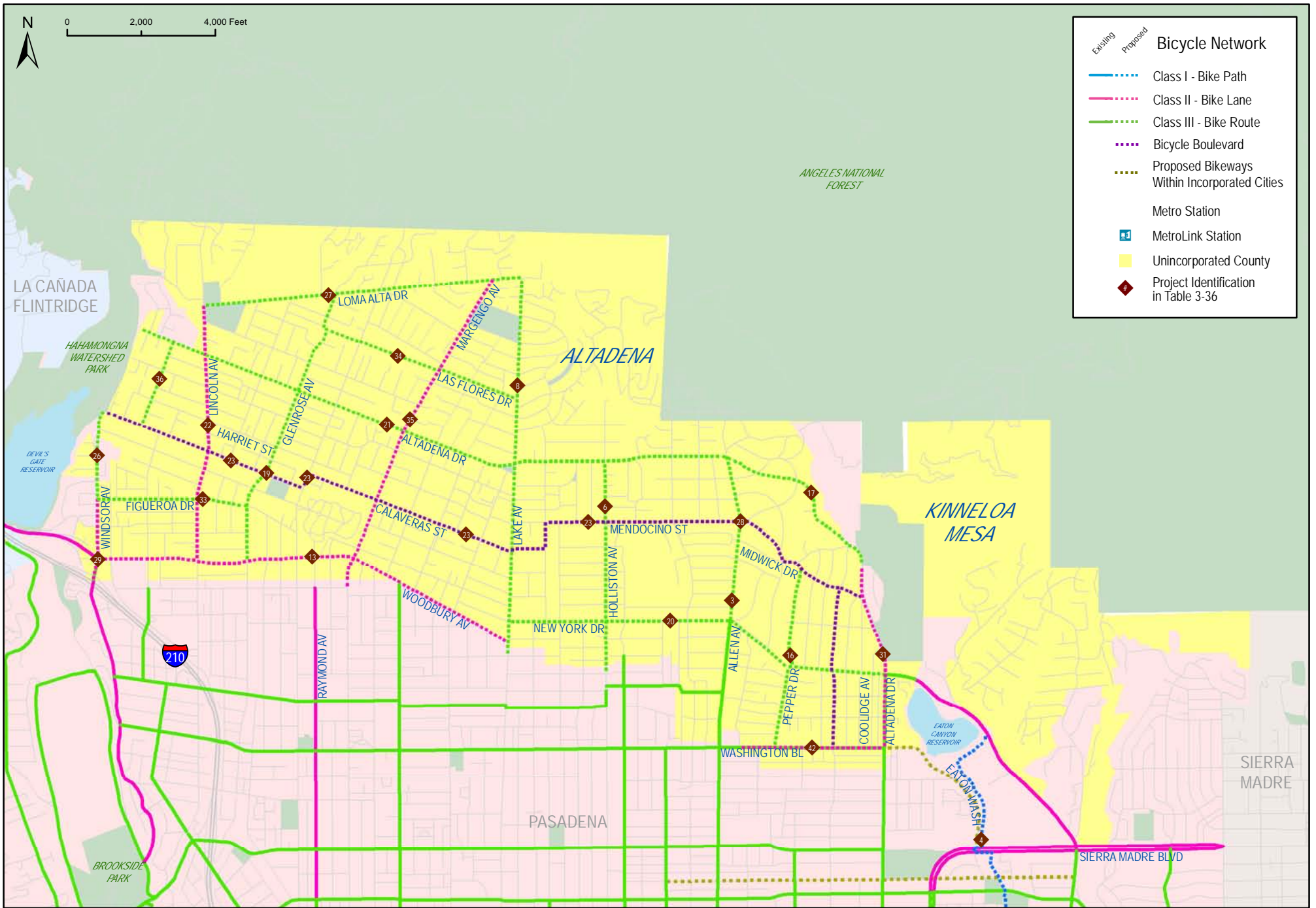


Figure 3-34: Altadena and Kinneloa Mesa Proposed Bicycle Facilities

Los Angeles County Bicycle Master Plan

Source: Los Angeles Metro (2010); Alta Planning + Design (2010)
Date: 10/13/10

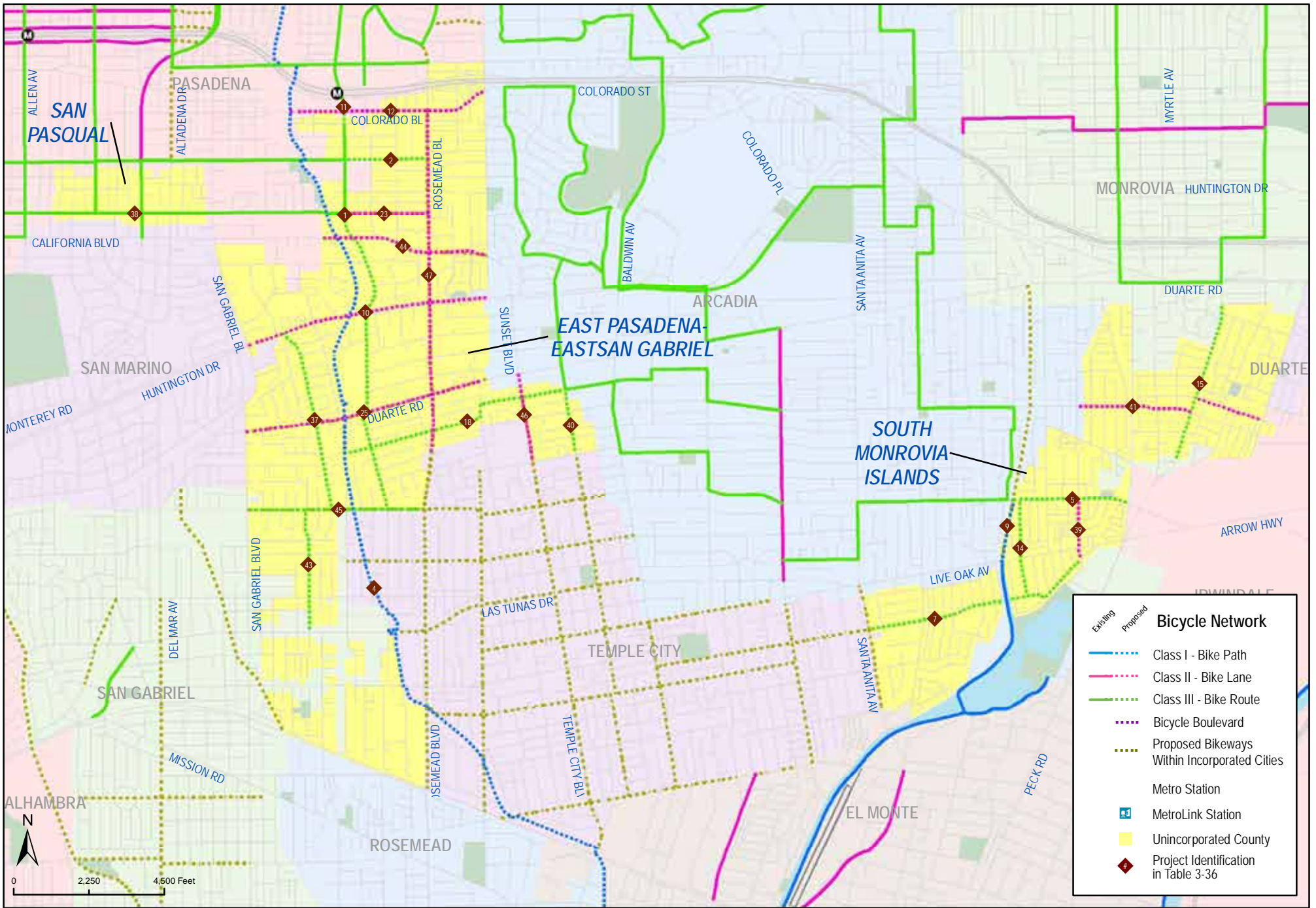


Figure 3-35: East Pasadena-East San Gabriel, San Pasqual and South Morovia Islands Proposed Bicycle Facilities

Los Angeles County Bicycle Master Plan

Source: Los Angeles Metro (2010); Alta Planning + Design (2010)
Date: 10/13/10

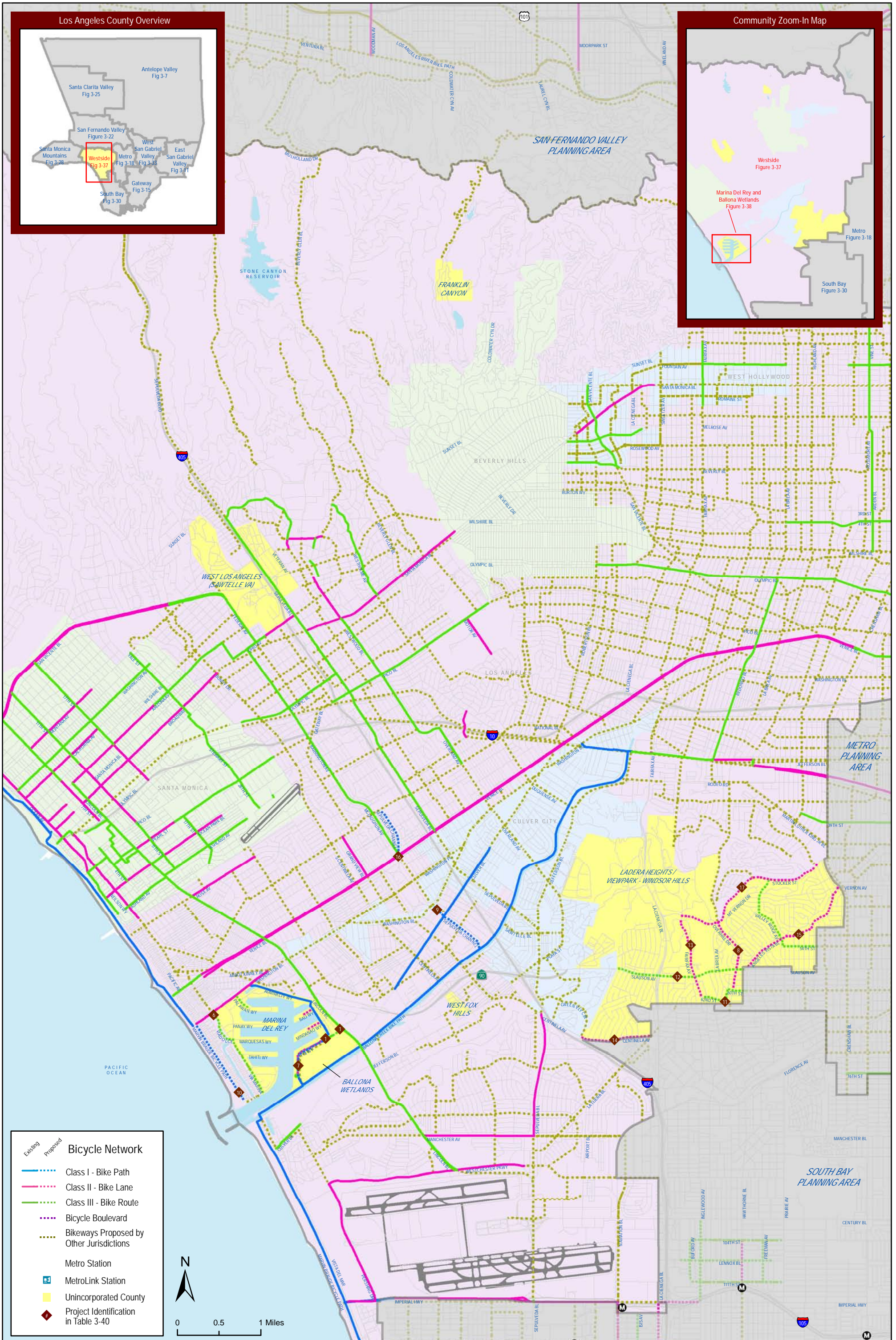


Figure 3-37: Westside Planning Area Proposed Bicycle Facilities

Los Angeles County Bicycle Master Plan

Source: Los Angeles Metro (2006; 2010); Alta Planning + Design (2010)
 Date: 10/14/11

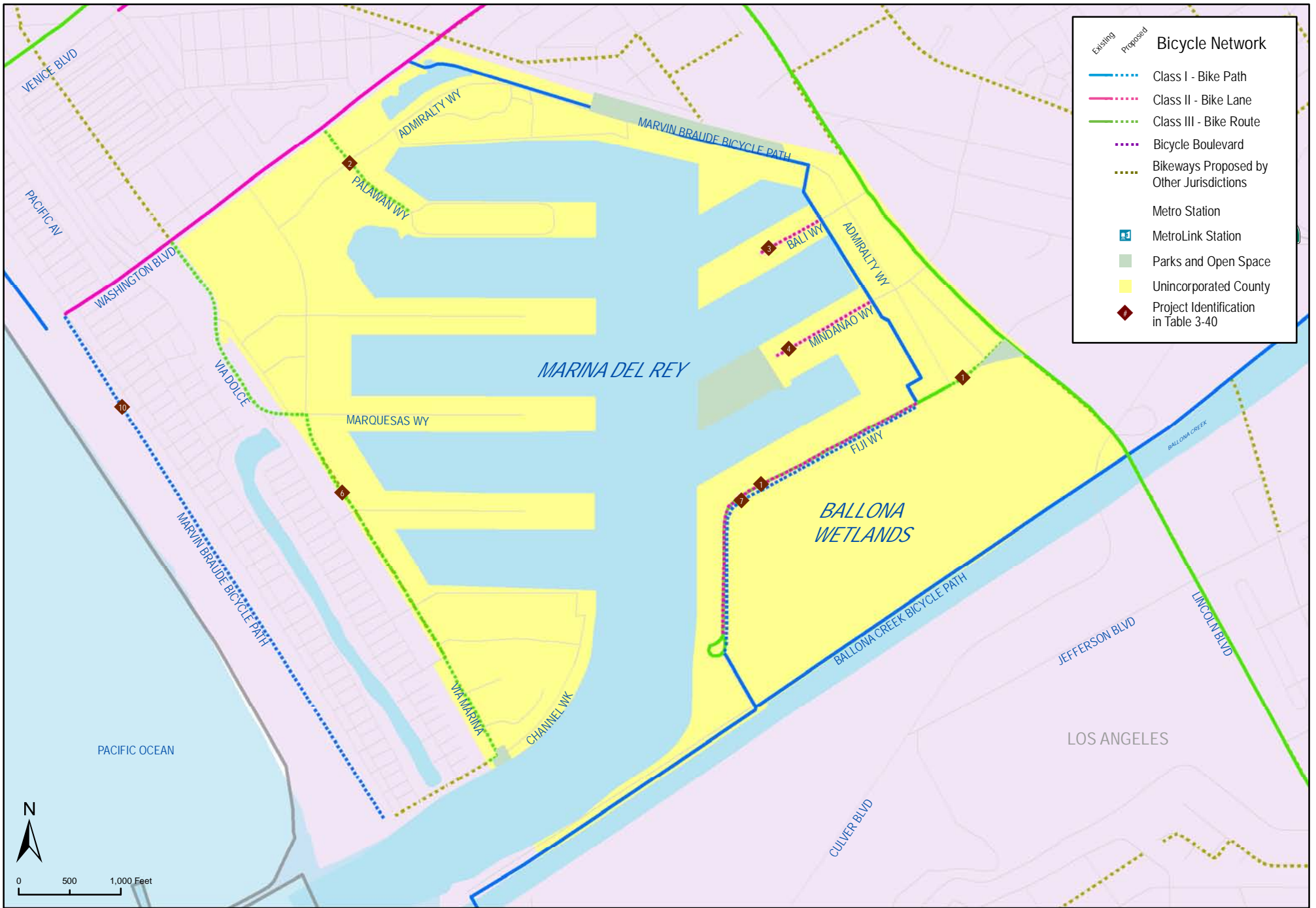


Figure 3-38: Ballona Wetlands and Marina Del Rey Proposed Bicycle Facilities

Los Angeles County Bicycle Master Plan

Source: Los Angeles Metro (2010); Alta Planning + Design (2010)
Date: 10/14/2011