

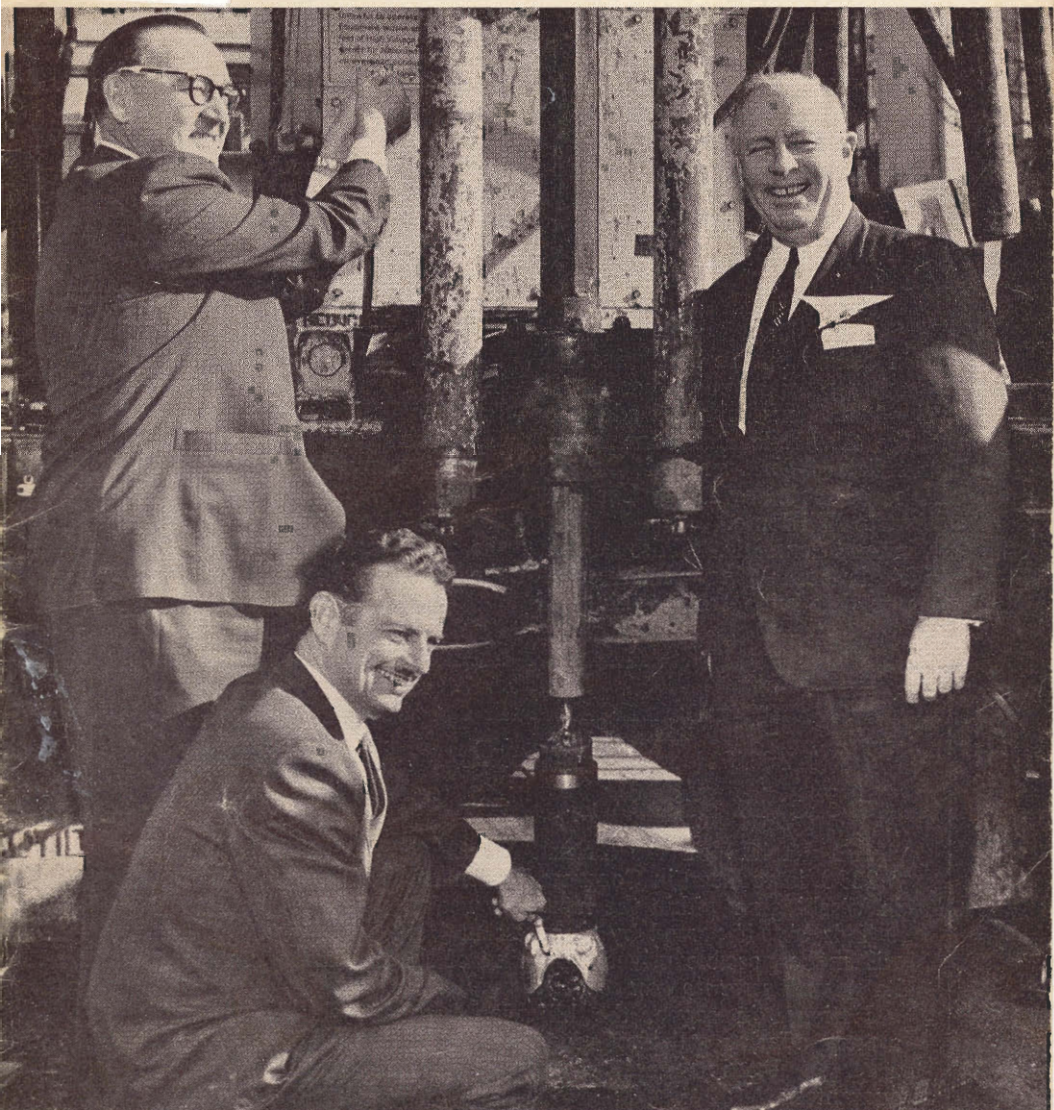
The



Emblem

76-86

FEBRUARY, 1962



(Cover story, page 15)

- Hearings on Engle Bill, S 2390, to Start
- Backbone Route Extensions Now Discussed
- Christiansen New Public Relations Head



GOV. EDMUND G. BROWN is principal speaker at civic ceremony Jan. 12 heralding the start of drilling for soil tests along subway portion of Backbone Route. He spoke near a drilling machine that had been set up that day at First and Broadway, Los Angeles.



TWO WEEKS LATER (Jan. 23) drilling begins in the Beverly Hills area at Linden Dr. and Wilshire Blvd. Here Driller Bill Schwenk is "assisted" by N. R. Dumont, MTA Board member, left; and Jack Freeman, Mayor of Beverly Hills, right.

Ground-Breaking Ceremony Starts Soil Drilling

"THE PROPOSAL for this Backbone Route is too sound and too necessary to remain just a plan. Let's start drilling!" said Gov. Edmund G. Brown at ceremonies Jan. 12 underscoring the start of ground-drilling for earth samples along the subway portion of the Backbone Route.

At First St. and Broadway, Los Angeles, in the shadow of a rotary drilling rig, he addressed a gathering of officials of state, county, and city governments, along with Chamber of Commerce representatives from many localities in the MTA area, and MTA Board members.

Reporters, as well as cameramen from newspapers and television stations, were also present.

After his speech, the Governor pulled a handle that symbolically

started the drilling of the first hole.

"We are not just *talking* transit today—today we are *digging*," said MTA Board Chairman A. J. Eyraud, who acted as master of ceremonies to introduce the Governor, as well as other speakers. Chairman Ernest E. Debs, of the Los Angeles County Board of Supervisors, and Joseph Quinn, representative of Mayor Samuel W. Yorty, also made brief addresses.

Two weeks later, on Jan. 23, when drilling started in the Beverly Hills area, MTA Board Member N. R. Dumont and Mayor Jack Freeman of that city were present to help start the first hole at Linden Dr. and Wilshire Blvd.

Drilling is continuing in the Los Angeles area at night, and in Beverly Hills during the day.

EARTH SAMPLES — Roger Nielson, Inspector-Geologist for Kaiser Engineers, holds small metal cylinder containing earth from bottom of hole drilled through Wilshire Blvd. For a complete story more fully explaining this picture, as well as soil-testing procedures and their significance, see the March issue.

