

# **REDLINE EXTENSION ROUTE AND ALIGNMENT OPTIONS**

*for the  
City of Beverly Hills*

August 2006

Prepared for:  
**City of Beverly Hills**  
**Mass Transit Committee**

Prepared by:

**KAKU ASSOCIATES**  
A Corporation

# OUTLINE

## SUBWAY DESIGN BASICS

## ALIGNMENT OPTIONS FOR THE RED LINE EXTENSION

## CHARACTERISTICS OF POTENTIAL STATIONS

- LAND USES WITHIN  $\frac{1}{4}$  MILE RADIUS
- EXISTING TRAFFIC AND TRANSIT CONDITIONS

## OTHER ISSUES

- ECONOMIC IMPACTS
- CONSTRUCTION
- SECURITY

# SUBWAY DESIGN BASICS

- Stations are generally 1 mile apart.
- 2 stations are likely in Beverly Hills.
- \$250 to 300 million per mile construction cost.  
(includes 1 station)
- Should locate where transit ridership potential is highest.
- Nearest anticipated stations outside of Beverly Hills:
  - Fairfax & Wilshire to the east (assuming a Wilshire alignment)
  - West Hollywood to the northeast (assuming a Santa Monica Bl & San Vicente alignment)
  - Century City to the west (assuming all alignments)

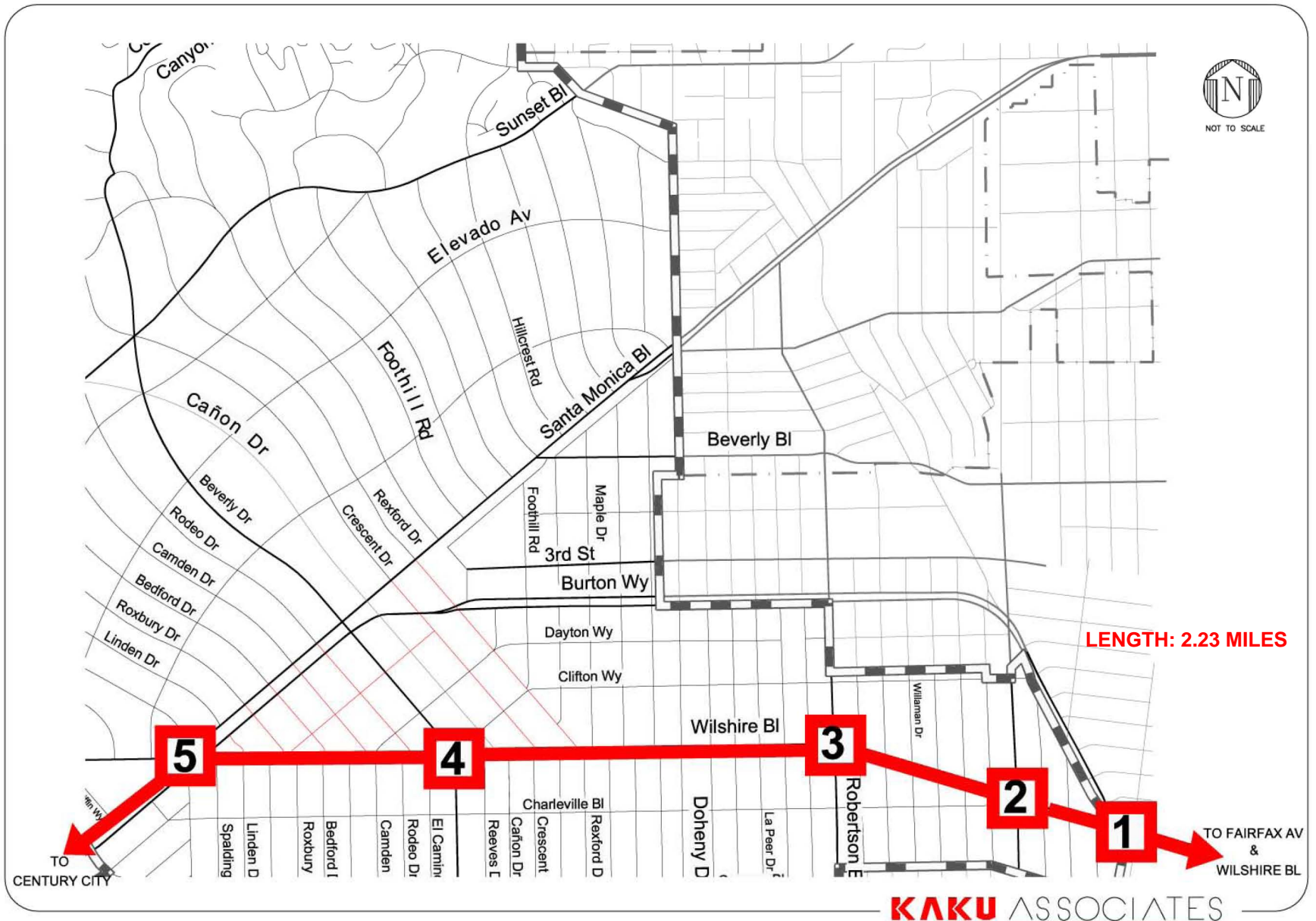
# ALIGNMENTS

## OPTION A.

The Wilshire Boulevard Alignment:

- From Wilshire Bl & Western Ave
  - Potential Stations in Beverly Hills:
    1. San Vicente Boulevard & Wilshire Boulevard or
    2. La Cienega Boulevard & Wilshire Boulevard or
    3. Robertson Boulevard & Wilshire Boulevard
- AND
4. Beverly/Rodeo Drives & Wilshire Boulevard or
  5. Santa Monica Boulevard & Wilshire Boulevard

# OPTION A THE WILSHIRE BOULEVARD ALIGNMENT



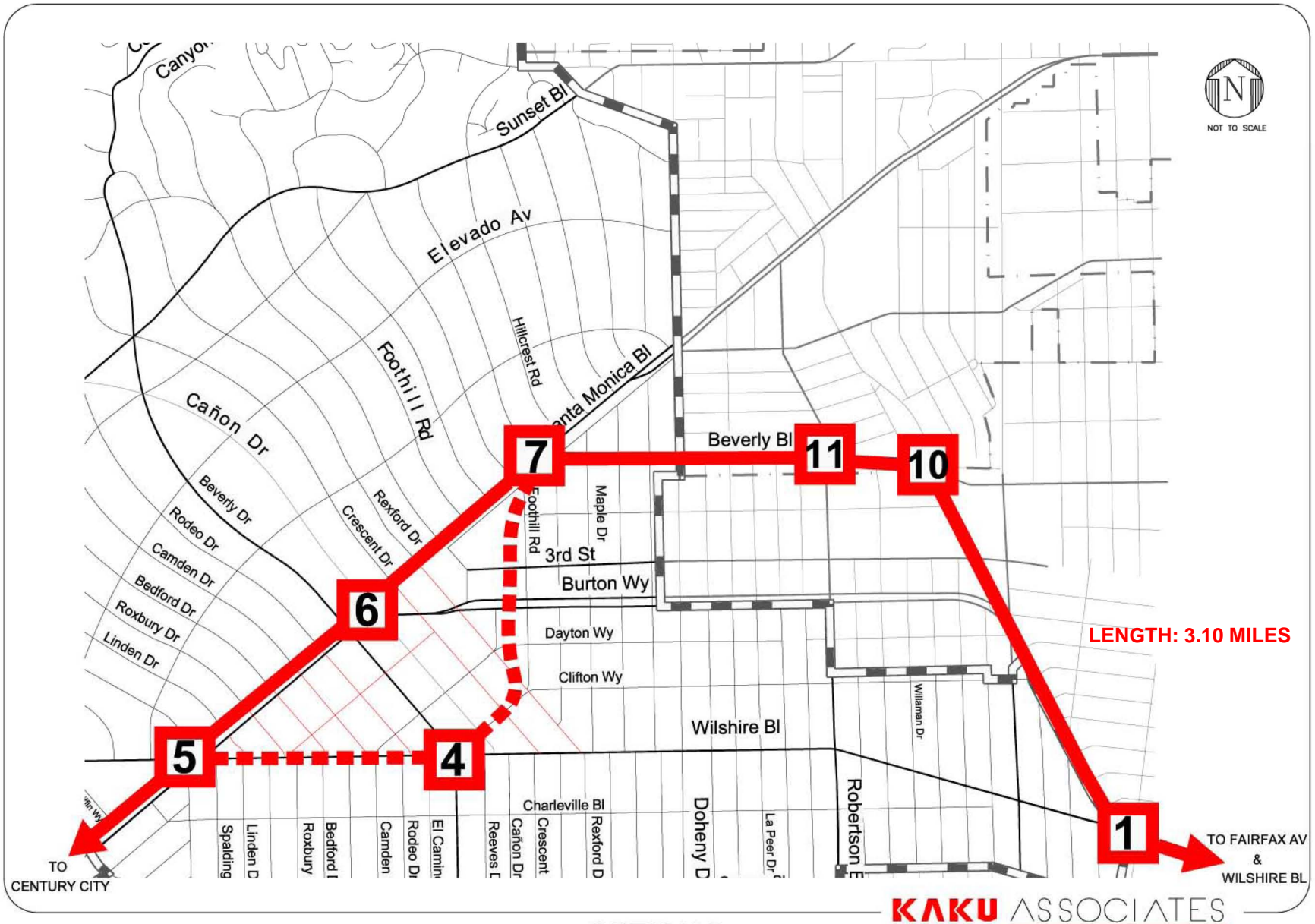
# ALIGNMENTS

## OPTION B.

The San Vicente Boulevard and Beverly Boulevard Alignment:

- From Wilshire Bl & Western Ave
  - Potential Stations:
    1. San Vicente Boulevard & Wilshire Boulevard or
    10. San Vicente Boulevard & Beverly Boulevard or
    11. Robertson Boulevard & Beverly Boulevard or
    7. Beverly Boulevard & Santa Monica Boulevard
- AND
4. Beverly/Rodeo Drives & Wilshire Boulevard or
  6. Beverly/Rodeo Drives & Santa Monica Boulevard or
  5. Santa Monica Boulevard & Wilshire Boulevard

# OPTION B THE SAN VICENTE BOULEVARD AND BEVERLY BOULEVARD ALIGNMENT



# ALIGNMENTS

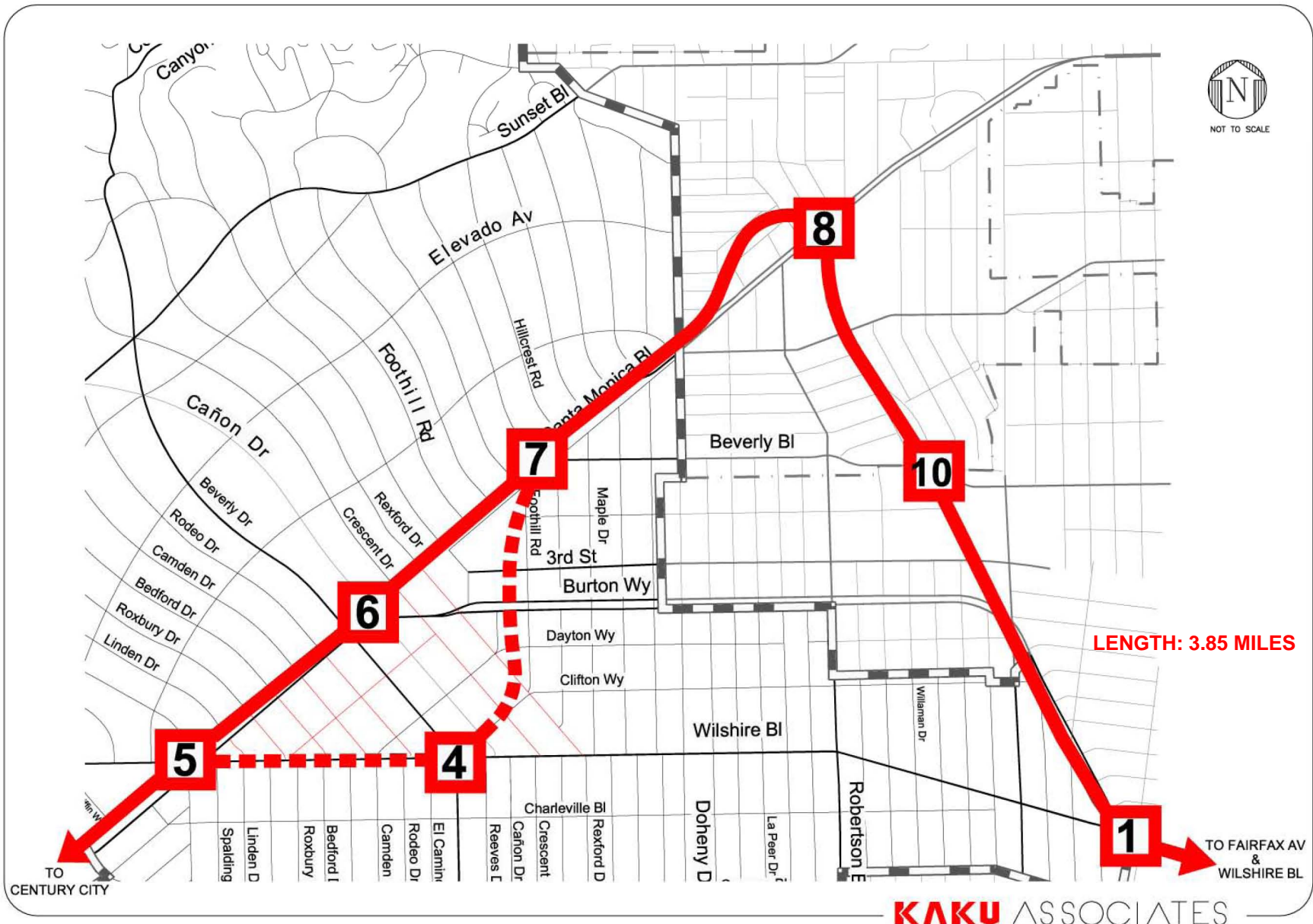
## OPTION C.

The San Vicente Boulevard and Santa Monica Boulevard Option:

- From Wilshire Bl & Western Ave
  - Potential Stations:
    1. San Vicente Boulevard & Wilshire Boulevard or
    10. San Vicente Boulevard & Beverly Boulevard or
    8. San Vicente Boulevard & Santa Monica Boulevard or
    7. Beverly Boulevard & Santa Monica Boulevard
- AND
4. Beverly/Rodeo Drives & Wilshire Boulevard or
  6. Beverly/Rodeo Drives & Santa Monica Boulevard or
  5. Santa Monica Boulevard & Wilshire Boulevard



# OPTION C THE SAN VICENTE BOULEVARD AND SANTA MONICA BOULEVARD ALIGNMENT



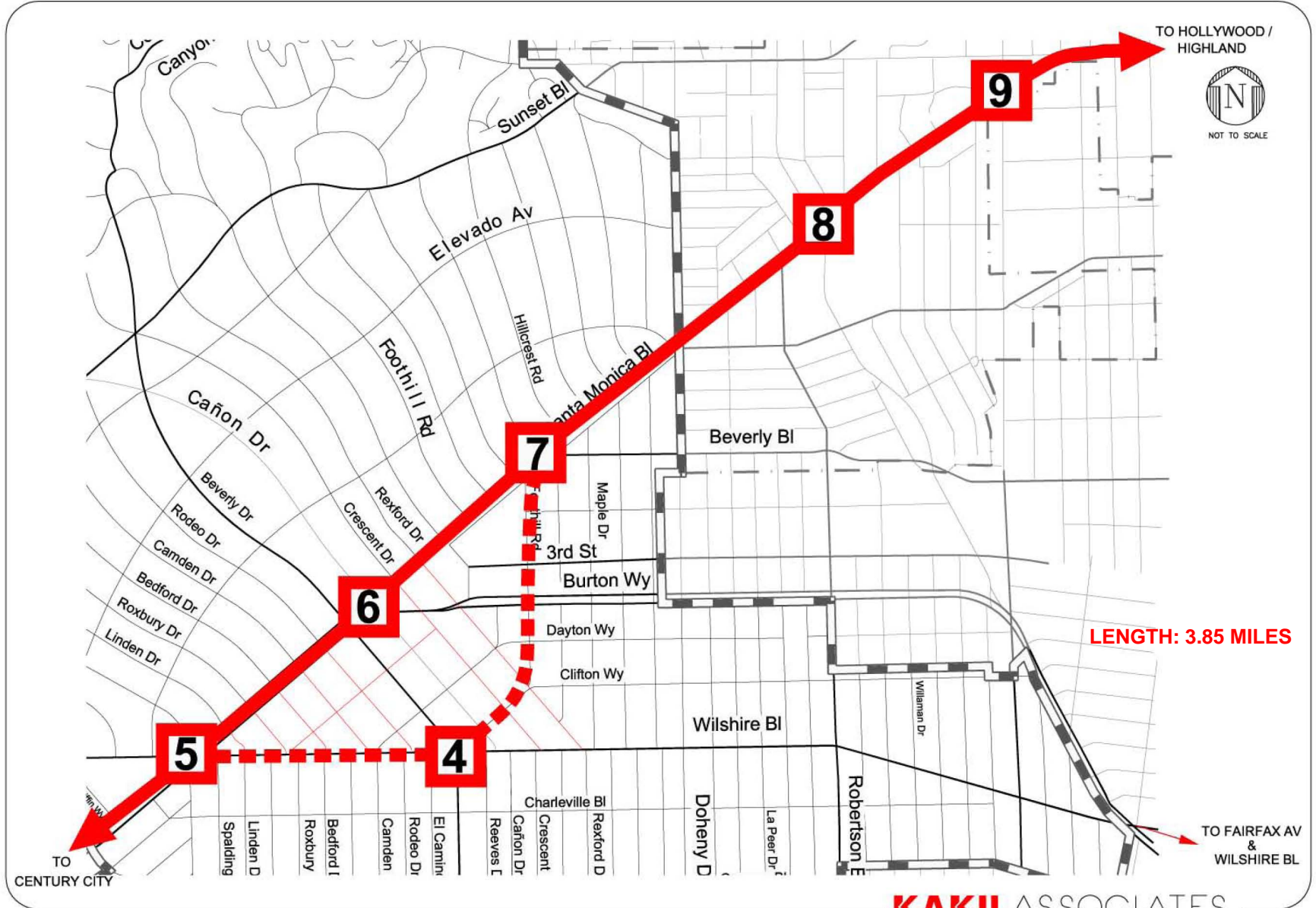
# ALIGNMENTS

## OPTION D.

The Santa Monica Boulevard Option:

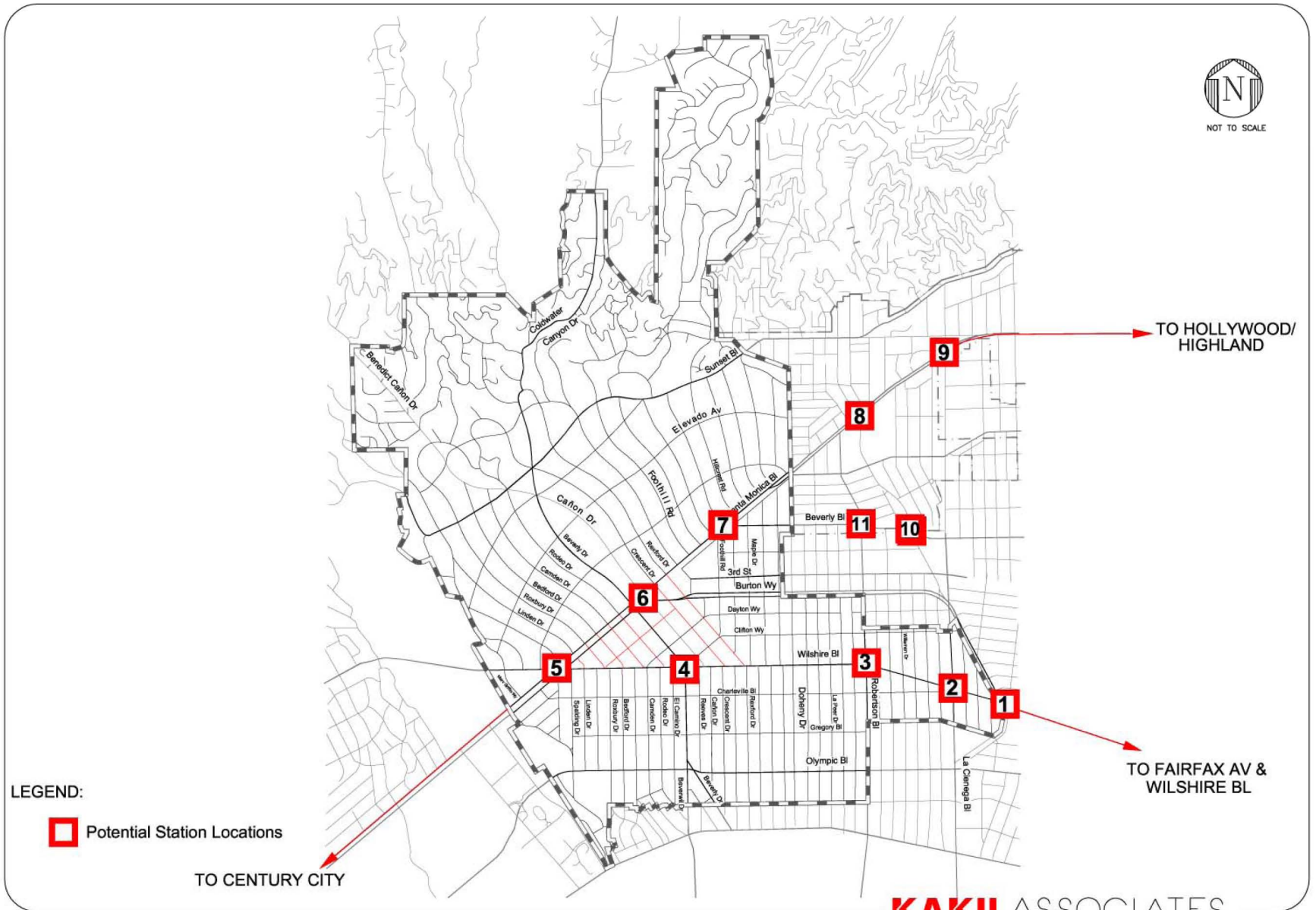
- From Hollywood Bl & Highland Ave
  - Potential Stations:
    9. La Cienega Boulevard & Santa Monica Boulevard or
    8. San Vicente Boulevard & Santa Monica Boulevard or
    7. Beverly Boulevard & Santa Monica Boulevard
- AND
4. Beverly/Rodeo Drives & Wilshire Boulevard or
  6. Beverly/Rodeo Drives & Santa Monica Boulevard or
  5. Santa Monica Boulevard & Wilshire Boulevard

# OPTION D THE SANTA MONICA BOULEVARD ALIGNMENT



# CHARACTERISTICS OF POTENTIAL STATIONS

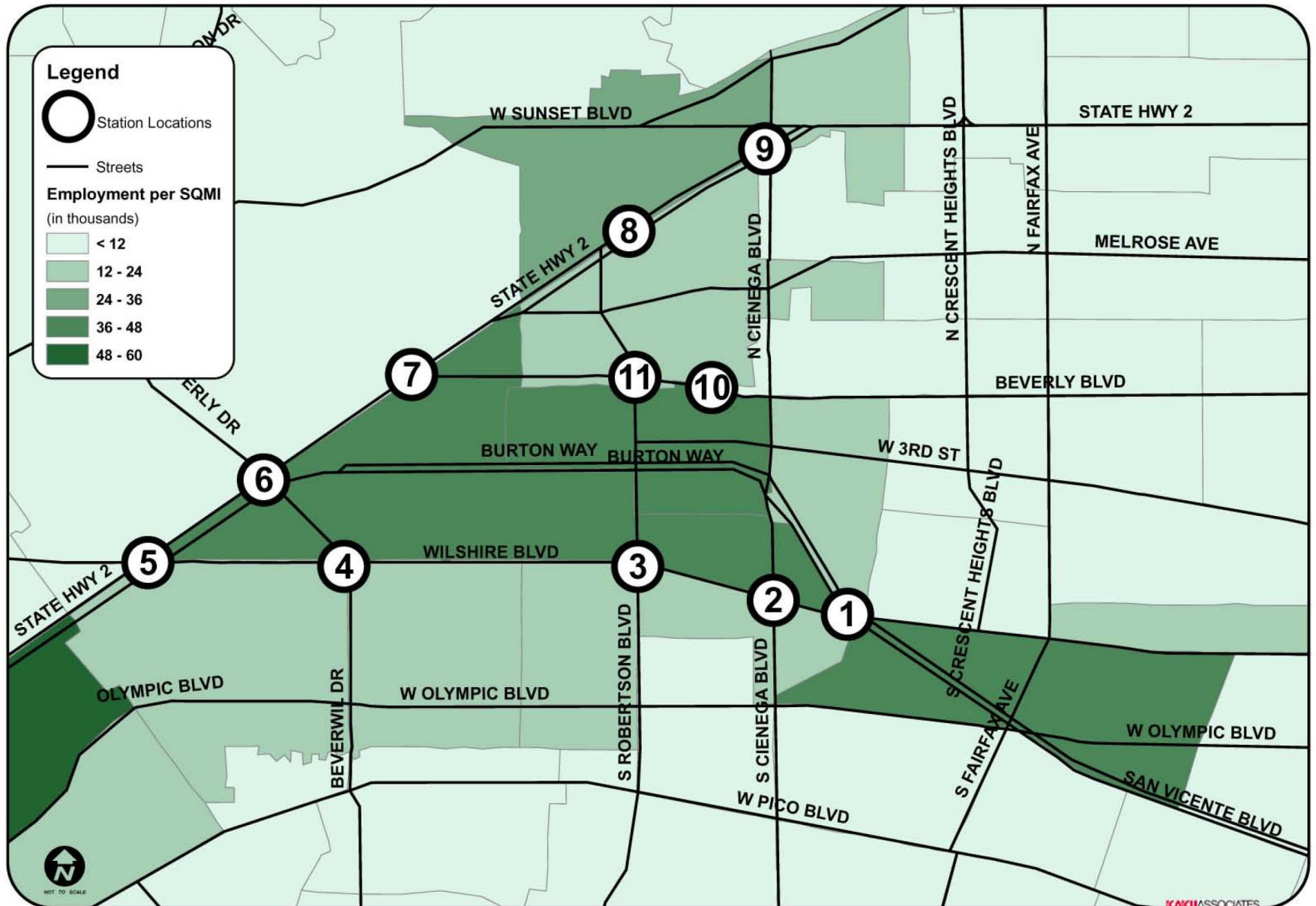
# POTENTIAL SUBWAY STATIONS WITHIN OR NEAR BEVERLY HILLS



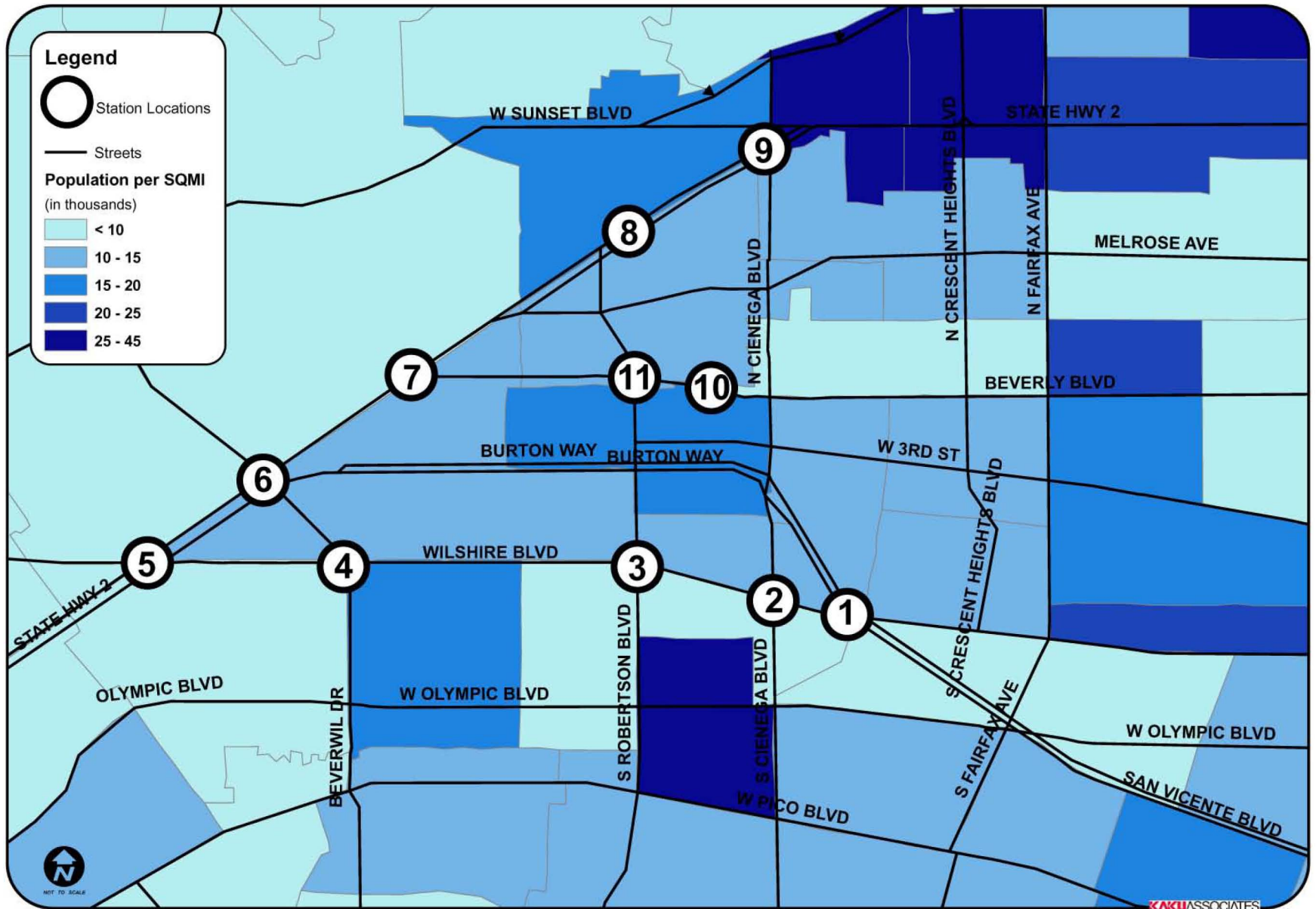
# DISTANCES BETWEEN STATION LOCATIONS

	FAIRFAX & WILSHIRE	1. San Vicente & Wilshire	2. La Cienega & Wilshire	3. Robertson & Wilshire	4. Beverly Dr & Wilshire	5. Santa Monica & Wilshire	6. Beverly Dr & Santa Monica	7. Beverly Bl & Santa Monica	8. San Vicente & Santa Monica	9. La Cienega & Santa Monica	10. San Vicente & Beverly Bl	11. Robertson & Beverly Bl	CENTURY CITY
FAIRFAX & WILSHIRE	0	0.6	1	1.3	2.2	3	2.5	2.2	2	2	1.25	1.6	3.3
1. San Vicente & Wilshire	0.6	0	0.4	0.7	1.6	2.4	2	1.6	1.6	1.8	1	1.1	2.7
2. La Cienega & Wilshire	1	0.4	0	0.3	1.2	2	1.6	1.4	1.4	1.7	0.8	1	2.3
3. Robertson & Wilshire	1.3	0.7	0.3	0	1	1.7	1.2	1	1.2	1.6	0.7	0.7	2
4. Beverly Dr & Wilshire	2.2	1.6	1.2	1	0	0.6	0.4	0.7	1.5	2	1.3	1.2	1.1
5. Santa Monica & Wilshire	3	2.4	2	1.7	0.6	0	0.5	1.1	2	2.5	2	1.5	0.6
6. Beverly Dr & Santa Monica	2.5	2	1.6	1.2	0.4	0.5	0	0.6	1.4	2	1.4	1.2	1.1
7. Beverly Bl & Santa Monica	2.2	1.6	1.4	1	0.7	1.1	0.6	0	0.8	1.4	1	0.7	1.7
8. San Vicente & Santa Monica	2	1.6	1.4	1.2	1.5	2	1.4	0.8	0	0.5	0.6	0.5	2.6
9. La Cienega & Santa Monica	2	1.8	1.7	1.6	2	2.5	2	1.4	0.5	0	1	1	3.1
10. San Vicente & Beverly Bl	1.25	1	0.8	0.7	1.3	2	1.4	1	0.6	1	0	0.25	2.5
11. Robertson & Beverly Bl	1.6	1.1	1	0.7	1.2	1.5	1.2	0.6	0.5	1	0.25	0	2.3
CENTURY CITY	3.3	2.7	2.3	2	1.1	0.6	1.1	1.7	2.6	3.1	2.5	2.3	0

# EMPLOYMENT DENSITIES NEAR SUBWAY STATIONS



# RESIDENTIAL DENSITIES NEAR SUBWAY STATIONS





# TRANSIT ROUTES NEAR SUBWAY STATIONS

## LEGEND:

### Metropolitan Transit Authority

- MTA Line 2, 302 & 305 - Sunset Boulevard
- MTA Line 4 & 304 - Santa Monica Boulevard
- MTA Line 14 - Cañon Drive, Beverly Drive & Beverly Boulevard,
- MTA Line 16, 316 - Santa Monica Boulevard / Burton Way
- MTA Line 20, 21 - Wilshire Boulevard
- MTA Line 28, 328 - Olympic Boulevard
- MTA Line 105 - La Cienega Boulevard
- MTA Line 220 - Robertson Boulevard
- MTA Line 720 - Wilshire Boulevard

### Antelope Valley Transit Authority

- AV Line 786 - Rodeo Drive & Wilshire Boulevard

### Santa Monica Municipal Bus Lines

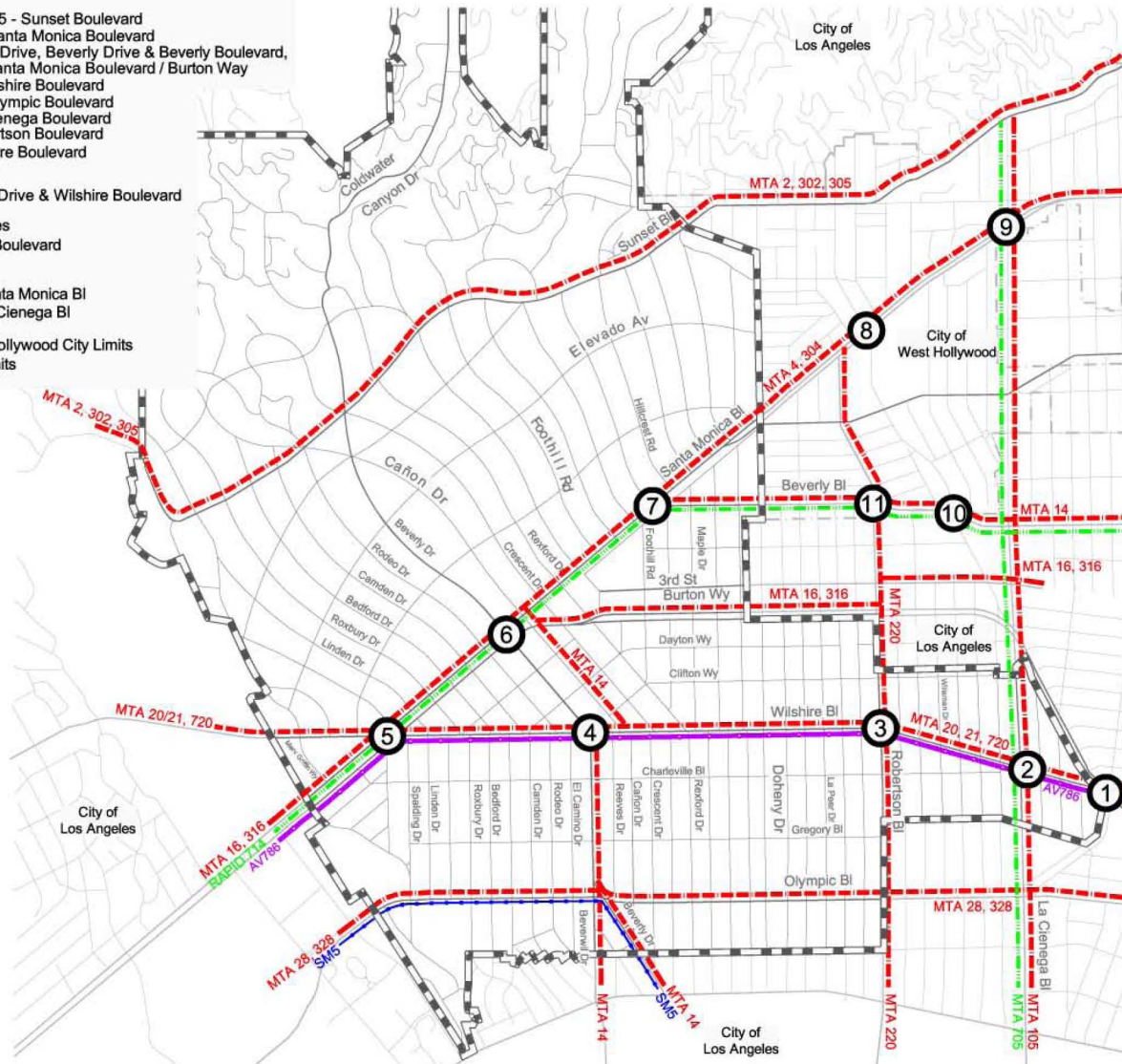
- SM Line 5 - Olympic Boulevard

### Metro RAPID

- RAPID Line 714 - Santa Monica Bl
- RAPID Line 705 - La Cienega Bl

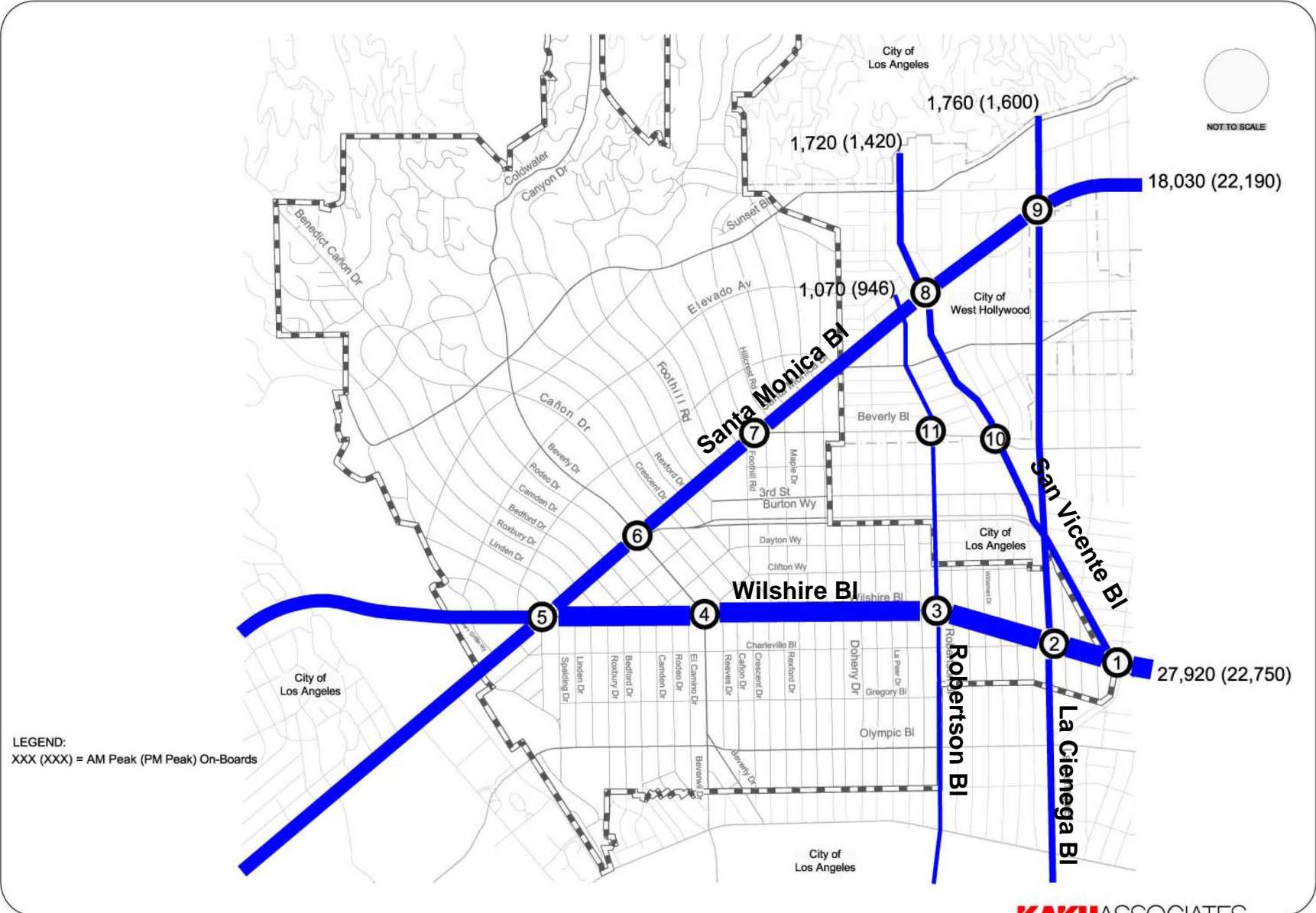
### Los Angeles/West Hollywood City Limits

- Beverly Hills City Limits



NOT TO SCALE

# EXISTING TRANSIT RIDERSHIP BY MAJOR STREET



[a] Data include all boardings within City of Beverly Hills along the major street.

# EXISTING TRANSIT RIDERSHIP BY STATION LOCATIONS

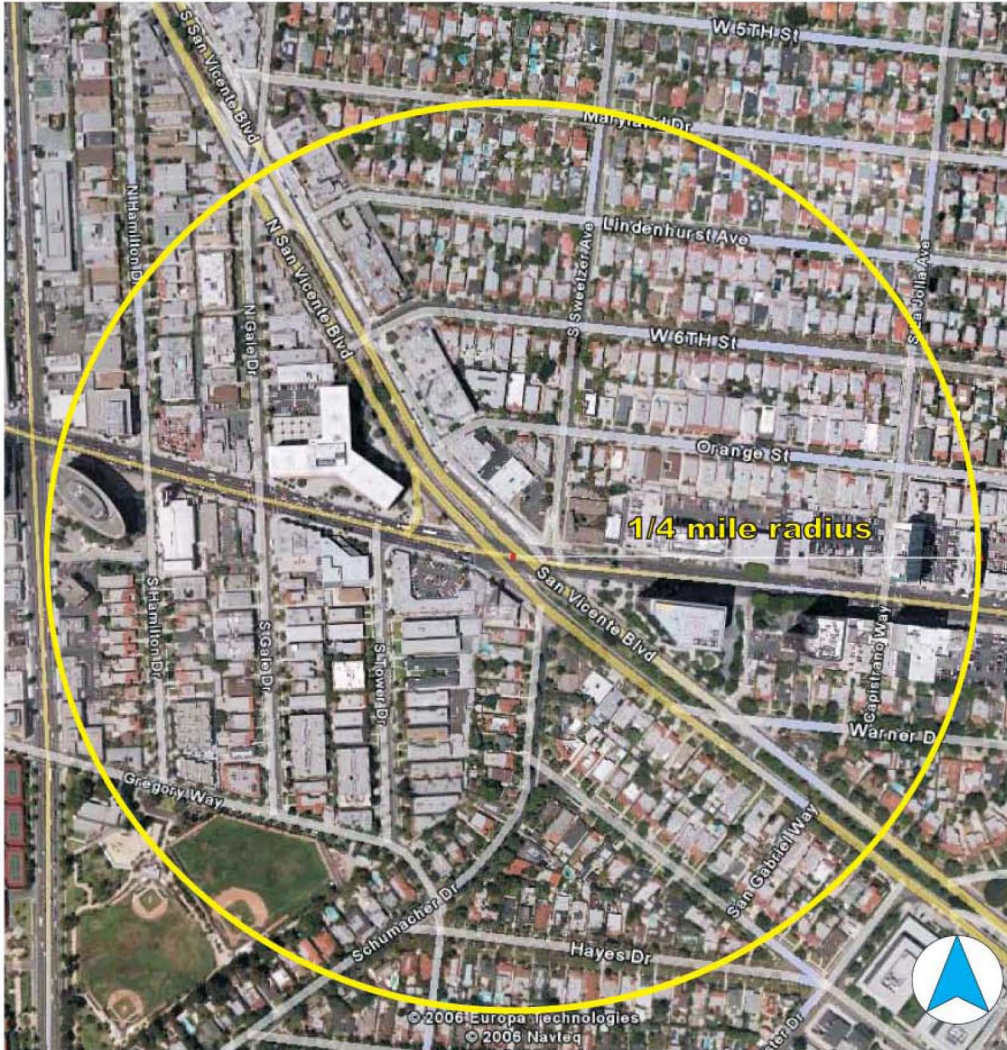
STATION LOCATIONS	AM PEAK ON-BOARDS [a]	PM PEAK ON-BOARDS
1. San Vicente Boulevard & Wilshire Boulevard	836	891
<b>2. La Cienega Boulevard &amp; Wilshire Boulevard</b>	<b>5,908</b>	<b>5,029</b>
<b>3. Robertson Boulevard &amp; Wilshire Boulevard</b>	<b>5,637</b>	<b>4,614</b>
<b>4. Beverly/Rodeo Drives &amp; Wilshire Boulevard</b>	<b>10,013</b>	<b>8,130</b>
5. Santa Monica Boulevard & Wilshire Boulevard	4,869	4,483
<b>6. Beverly/Rodeo Drives &amp; Santa Monica Boulevard</b>	<b>5,694</b>	<b>7,080</b>
7. Beverly Boulevard & Santa Monica Boulevard	1,706	2,025
8. San Vicente Boulevard & Santa Monica Boulevard	4,350	5,132
9. La Cienega Boulevard & Santa Monica Boulevard	1,210	1,494
10. San Vicente Boulevard & Beverly Boulevard	3,043	2,671
11. Robertson Boulevard & Beverly Boulevard	996	1,006

[a] Data include passengers on board for all bus stops within a 1/4 mile radius of the potential station.

On-boards are counts of the number of passengers on the bus at stops along the route.

Because many passengers are double-counted, the figures here only provide relative transit use measures.

# STATION 1 SAN VICENTE BOULEVARD AND WILSHIRE BOULEVARD



- Less than half the 1/4 mile radius includes City lines of Beverly Hills and Los Angeles
- Only 0.6 mile from Fairfax Ave.
  - Currently ill-suited for pedestrians and
- 3/4 mile from Beverly Center & Cedars-Sinai.
  - Vehicle LOS good
- Wide, high speed intersection.
  - METRO 20, 21, & 720 along Wilshire
- Ill-suited for pedestrians.
  - METRO 305, 550 along San Vicente
- Vehicle LOS is good.
  - AV 786 along Wilshire BI
- Feeder buses
  - Metro 20, 21, & 720 along Wilshire BI
  - Metro 305, 550 along San Vicente BI
  - AV 786 along Wilshire BI
- AM Peak On-Boards: 836
- PM Peak On-Boards: 891

Source: 2005 Google

0 330' 660'

# STATION 1 SAN VICENTE BOULEVARD AND WILSHIRE BOULEVARD



Bank of America & northwest pedestrian island



Low density to the northeast



North pedestrian crossing



Southeast pedestrian crossing



View of north corner from east



View of north

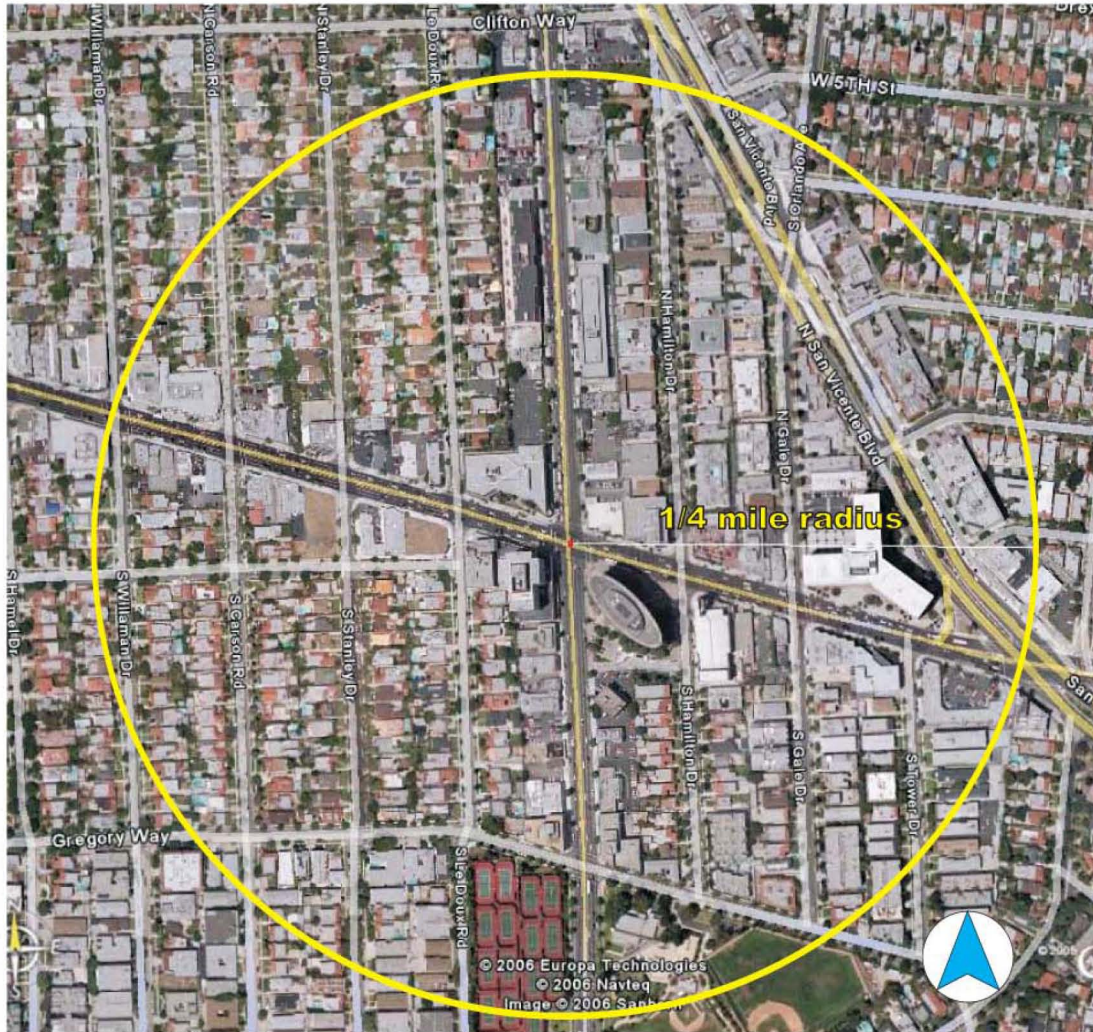


View of northeast & San Vicente



View of northwest side of intersection

# STATION 2 LA CIENEGA BOULEVARD AND WILSHIRE BOULEVARD



Source: 2005 Google

- Approximately 1 mile from Fairfax Ave.
- Restaurant Row to north along La Cienega Bl.
- 3/4 mile south of Cedars-Sinai & Beverly Center.
- Multiple family dwelling units to north of Wilshire Bl.
- Restaurant Row to north along La Cienega Bl.
- Single family dwelling units to south of Wilshire Bl.
- Multiple family dwelling units to north of Wilshire Bl & single family dwelling units to south of Wilshire Bl.
- Small commercial buildings & two high-rise office buildings
- Commercial & office buildings
- Horace Mann Elementary School to southeast on Charleville Bl
- Horace Mann Elementary School to southeast on Charleville Bl weekdays between 7 & 9 AM, 4 & 6 PM, and on weekends between 4 and 6 PM.
- Vehicle LOS between 7 and 9 AM, 4 and 6 PM, & on weekends between 4 and 6 PM.
- Feeder buses:
  - METRO 20, 21, & 720 along Wilshire Bl
  - Metro 20, 21, & 720 along Wilshire Bl
  - METRO 705 along La Cienega Bl
  - Metro 105 along La Cienega Bl
  - AA 726 along Wilshire Bl

•AM Peak On-Boards: 5,908

•PM Peak On-Boards: 5,029

# STATION 2 LA CIENEGA BOULEVARD AND WILSHIRE BOULEVARD



Eastern View of La Cienega



North view of intersection



Northeast corner office buildings



Northeast view & entrance to restaurant row



Nearby residential area to west



Residential area just south of Wilshire



South pedestrian crossing & the Flynt publishing building



Westerly view of Wilshire & pedestrian activity

# STATION 3 ROBERTSON BOULEVARD AND WILSHIRE BOULEVARD



Source: 2005 Google

0 330' 660'

- $\frac{3}{4}$  mile south of Cedars-Sinai & Beverly Center.
- Small retail along Robertson to north
- 1.3 miles from Fairfax & Wilshire.
- Horace Mann Elementary School to the south on Charleville Bl
- Small retail along Robertson to north
- ~~North~~ LOS is fair
- Feeder buses:
  - Bus service is not as good as on La Cienega Bl.
    - METRO 20, 21, & 720 along Wilshire Bl
    - METRO 220 along Robertson Bl
  - Horace Mann Elementary School to the south on Charleville Bl.
    - AV 786 along Wilshire Bl
- Vehicle LOS is fair.
- Feeder buses:
  - Metro 20, 21, & 720 along Wilshire Bl
  - Metro 220 along Robertson Bl
  - AV 786 along Wilshire Bl
- AM Peak On-Boards: 5,637
- PM Peak On-Boards: 4,614



# STATION 3 ROBERTSON BOULEVARD AND WILSHIRE BOULEVARD



Easterly View on Wilshire Bl



Vehicle storage on NE corner



View south of intersection

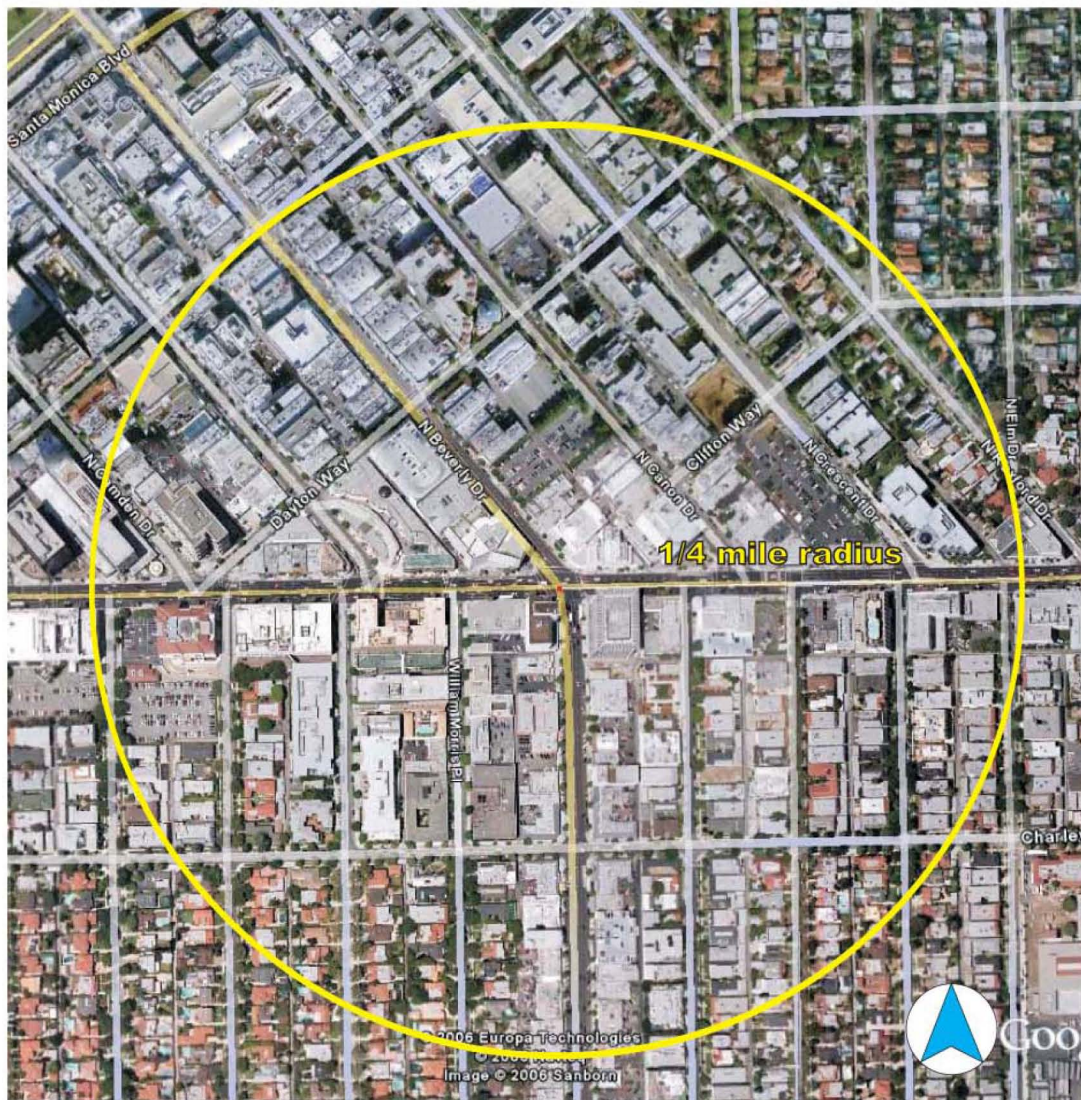


View south of Robertson Bl



Westerly view on Wilshire Bl

# STATION 4 BEVERLY/RODEO DRIVE AND WILSHIRE BOULEVARD



Source: 2005 Google

0 330' 660'

- 1.1 mile to Century City station.
- On the south edge of business triangle
- Serves South Beverly Dr.
  - Pedestrian-oriented
- Subway riders likely to walk beyond 1/4 mi radius in
  - Non-resident customers / employees can reach business triangle
- Rodeo Dr and Via Rodeo one block west of Beverly Dr
  - Non-resident customers / employees can reach business triangle.
  - Vehicle LOS fair
- Feeder buses:
  - Vehicle LOS is fair
  - METRO 20, 21, & 720 along Wilshire Bl
- Feeder buses:
  - METRO 14 from Beverly Bl, through N. Santa Monica Bl & Canon Dr south to Beverly Dr
    - Metro 20, 21, & 720 along Wilshire Bl
  - METRO 14 from Wilshire Bl, through N. Santa Monica Bl and Canon Dr south to Beverly Dr
    - AV 786 along Wilshire Bl
- AM Peak On-Boards: 10,013
- PM Peak On-Boards: 8,130

# STATION 4 BEVERLY/RODEO DRIVE AND WILSHIRE BOULEVARD



Business Triangle at Beverly Dr & Dayton Wy



Development at Beverly Dr & Wilshire Bl



Easterly view of Wilshire Bl



Pedestrian crossings in Business Triangle at Dayton Wy



Via Rodeo just one block from Beverly Dr on Wilshire Bl



View south of Wilshire Bl

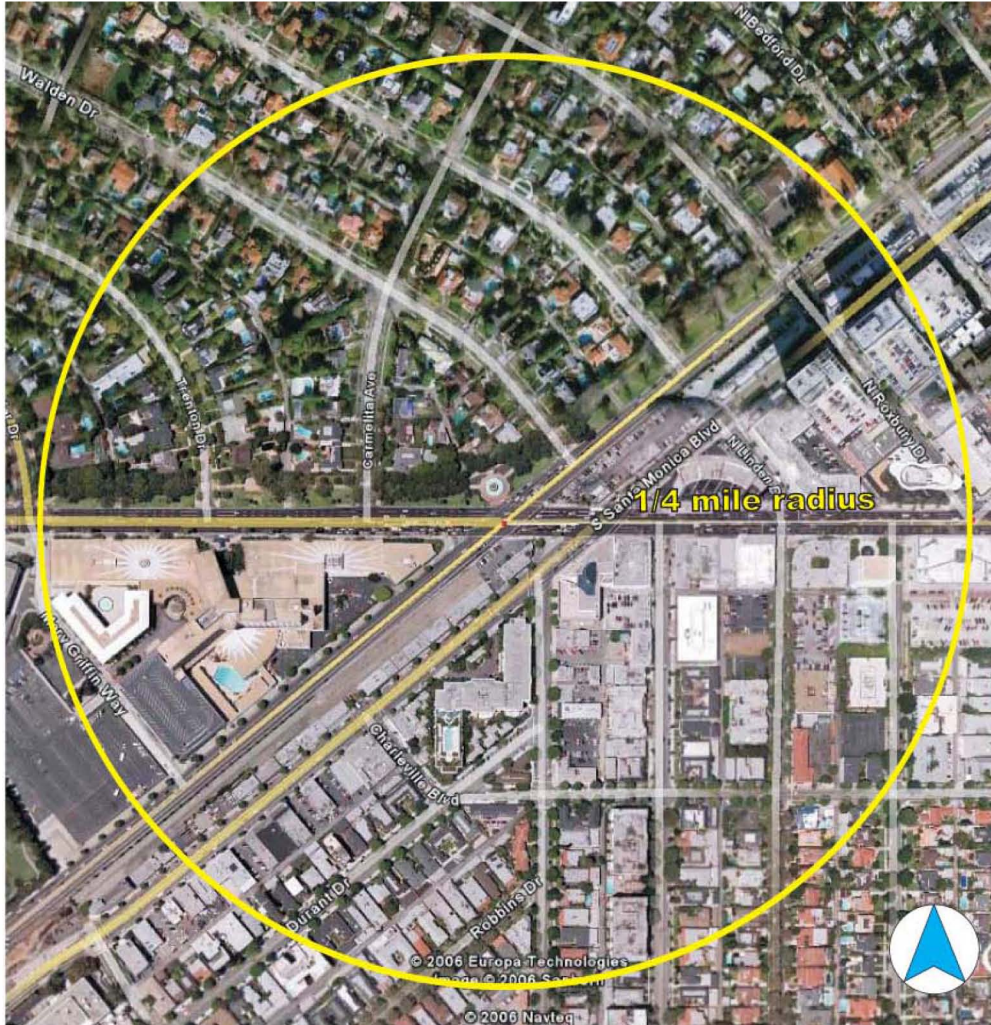


Westerly pedestrian environment along Wilshire Bl



South Beverly Dr commercial area

# STATION 5 SANTA MONICA BOULEVARD AND WILSHIRE BOULEVARD



Source: 2005 Google

- On the western edge of the business triangle
- 1/4 mile radius captures only a small portion of business triangle.
- Only 0.6 mile to anticipated Century City station.
- Potential link to Robinson's-May site
- Potential link to Hilton & Robinson's-May site.
- Complex intersection
- Vacant railroad right-of-way on southwest corner.
- Starbucks, parking, vacant RB ROW on north corner
- Electric Fountain on northeast corner.
- El Rodeo Elementary School to northwest.
- Electric Fountain on northeast corner
- Vehicle LOS pool weekdays between 7 and 9 AM, 4 and 6 PM, & on weekends between 4 and 6 PM.
- El Rodeo Elementary School to northwest on Whittier Dr
- Feeder buses:
  - Metro 20, 21, & 210 along Wilshire Bl, 4 a & 6 PM, and on weekends between 4 & 6 PM
  - Metro Rapid 714 along N. Santa Monica Bl to Beverly Bl
- Feeder buses:
  - Metro Rapid 704 & 710 along Wilshire Bl Los Angeles to Santa Monica via Santa Monica Bl
  - METRO Rapid 714 along N. Santa Monica Bl to Beverly Bl
  - Metro 16, 316 from N. Santa Monica to Burton Wy
  - METRO Rapid 704 planned from downtown Los Angeles to Santa Monica via Santa Monica Bl
  - AV 786 along Wilshire Bl to N. Santa Monica Bl
  - METRO 16, 316 from N. Santa Monica to Burton Wy
- AM Peak On-Boards: 4,869
- PM Peak On-Boards: 4,483
  - METRO 4, 304 along N. Santa Monica Bl
  - AV 786 along Wilshire Bl to N. Santa Monica Bl

# STATION 5 SANTA MONICA BOULEVARD AND WILSHIRE BOULEVARD



Early view of N Santa Monica Bl



Robinson's-May parking structures on SW Corner



Northeast view of intersection



Northerly view of S Santa Monica Bl



Northerly view & Fountain



Northwesterly view & Trader Vic's restaurant



Southerly view on S Santa Monica Bl & Starbucks



View northeast of S Santa Monica Bl & pedestrian island



View of Wilshire extending North



View southeast at S Santa Monica Bl

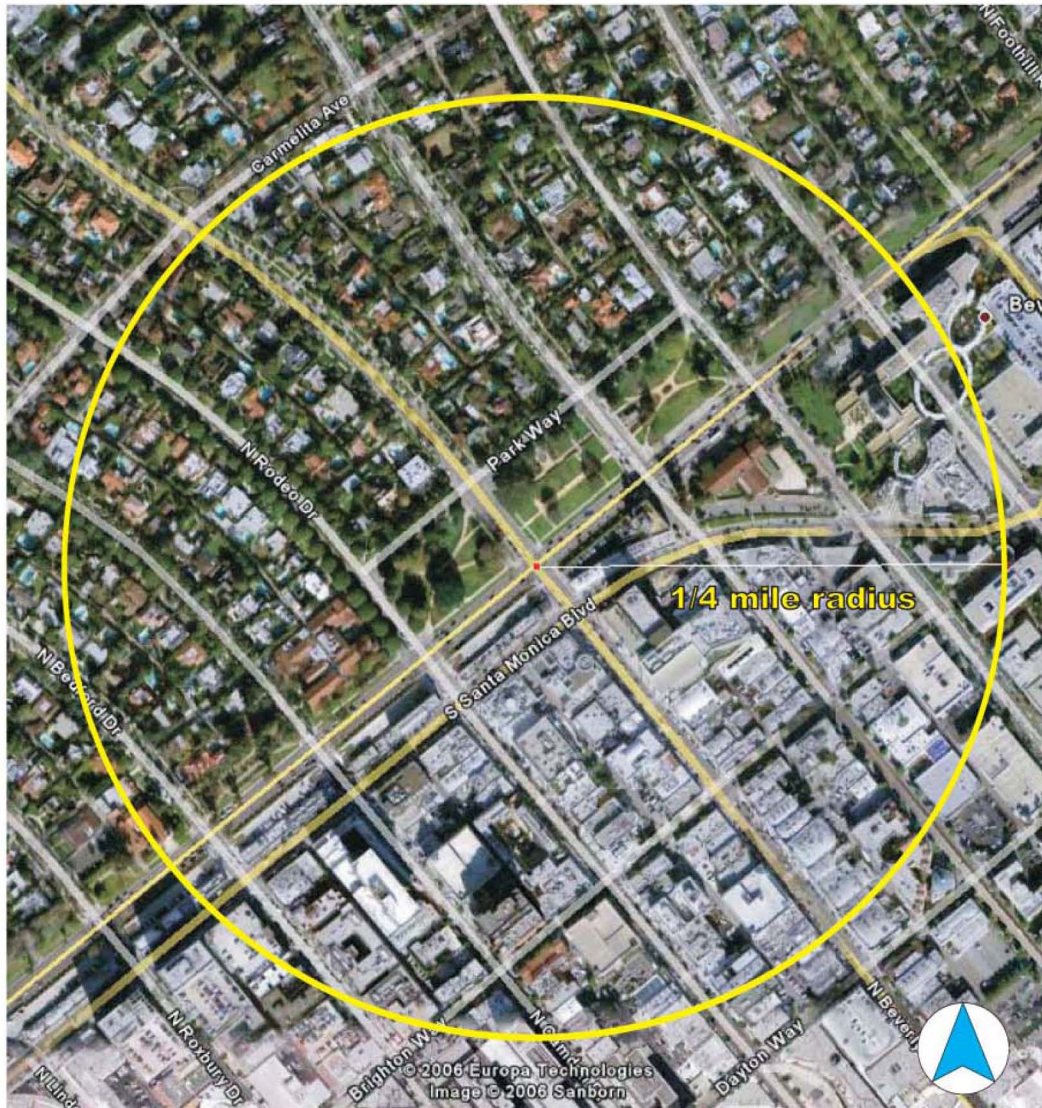


West



Robinson's -May site

# STATION 6 BEVERLY DRIVE AND SANTA MONICA BOULEVARD



- Beverly Garden Park facilities & administrative offices on north.
- Subway riders likely to walk beyond ¼ mi radius in pedestrian-oriented business triangle.
- Non-resident transit riders may frequent park triangle.
- 1 Park to Century City Station, Santa Monica Bl & northern residential area.
- Over half the ¼ radius includes low-density single-family residences.
- On south edge of business triangle
- Serves the Civic Center.
- Beverly Garden Park facilities on north.
- Non-resident transit riders may frequent park.
- Subway patrons likely to walk further
- Non-resident customers / employees can reach business triangle
- Abuts city-owned parking structures on south.
- Vehicle LOS poor weekdays from 4 to 6 PM.
- Abuts City-owned parking structures on south
- Feeder buses:
  - Metro 316 from N. Santa Monica Bl to Burton Wy
  - Feeder buses:
    - Metro 14 from Beverly Bl, through N. Santa Monica Bl and Canon Dr to downtown Beverly Dr
    - Metro Rapid 714 from N. Santa Monica Bl to Beverly Bl
    - METRO 4, 304 along N. Santa Monica Bl
    - METRO Rapid 704 from Beverly Bl through N. Santa Monica Bl & Canon Dr south to downtown Los Angeles to Santa Monica via Santa Monica Bl
    - METRO Rapid 714 from N. Santa Monica Bl to Beverly Bl
- **AM Peak On-Boards: 5,694**
- **PM Peak On-Boards: 7,080**
- METRO Rapid 704 planned from downtown Los Angeles to Santa Monica via Santa Monica Bl

Source: 2005 Google

0 330' 660'

# STATION 6 BEVERLY DRIVE AND SANTA MONICA BOULEVARD



Beverly garden park



Southwesterly view of intersection

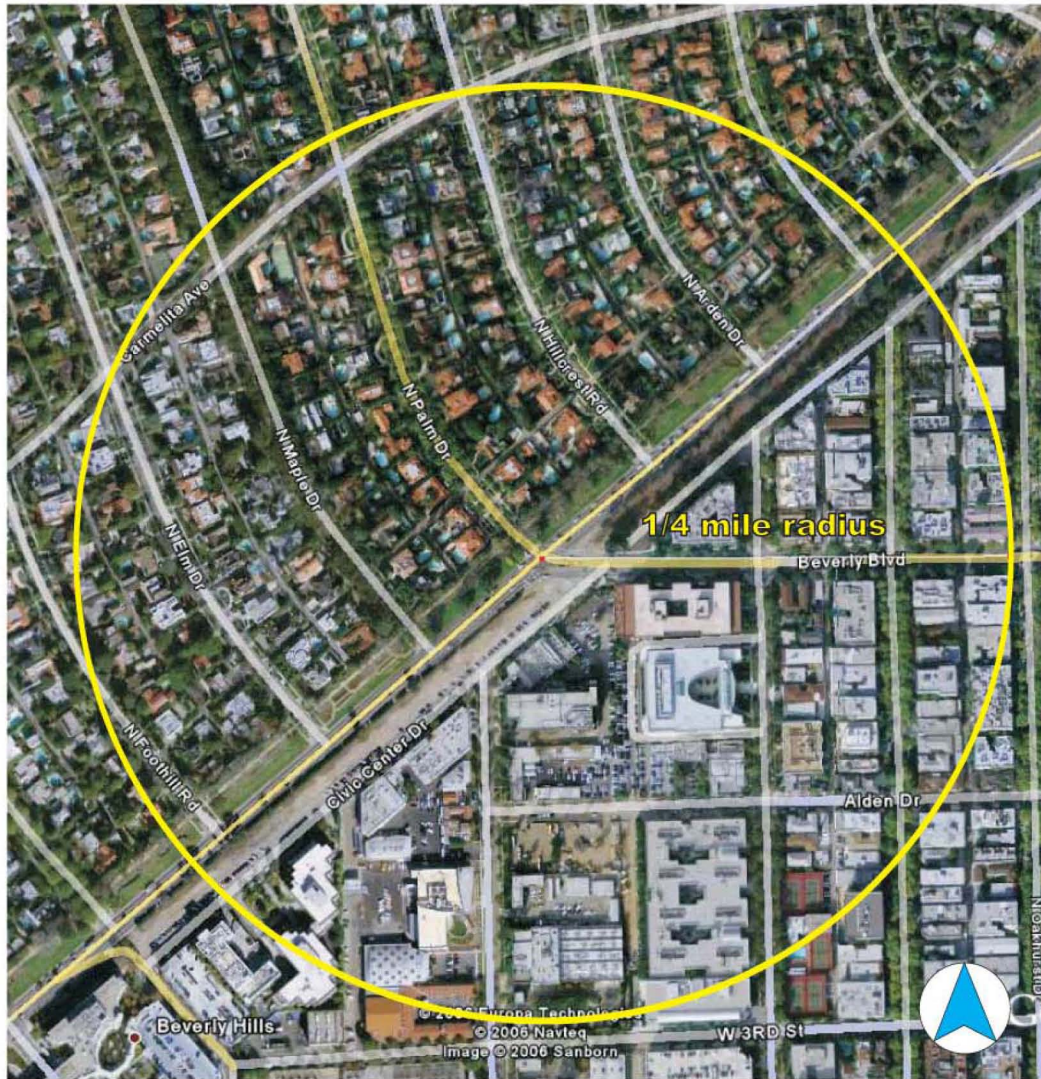


View of Business Triangle to South



View of Santa Monica Bl to southwest

# STATION 7 BEVERLY BOULEVARD AND SANTA MONICA BOULEVARD



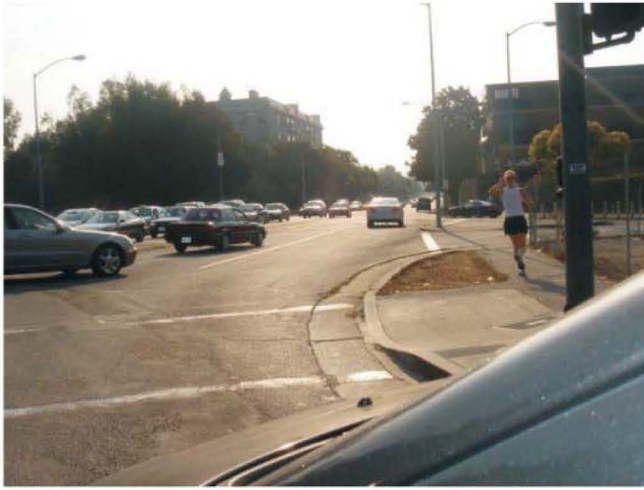
- Does not serve from Business Center Dr to Beverly Bl along Civic Center Dr to south
- Parking strip to Beverly Bl along Civic Center Dr to south
- Residential area to north
- Beverly Bl becomes residential N. Palm Dr
- Half the 1/4 radius includes low density single family residences.
- Minimal pedestrian activity
- Beverly Bl becomes residential N. Palm Dr.
- Feeder buses:
- Minimal pedestrian activity.
  - METRO Rapid 714 from N. Santa Monica Bl to Beverly Bl
- Feeder buses:
  - METRO Rapid 714 from N. Santa Monica Bl to Beverly Bl
  - METRO Rapid 704 planned from downtown Los Angeles to Santa Monica via Santa Monica Bl
  - METRO Rapid 704 planned from downtown Los Angeles to
  - Santa Monica via Santa Monica Bl
  - Santa Monica from Beverly Bl through N. Santa Monica Blvd and Canon Dr south to Beverly Dr
- AM Peak On-Boards: 1,706
- PM Peak On-Boards: 2,025

Source: 2005 Google

0 330' 660'



# STATION 7 BEVERLY BOULEVARD AND SANTA MONICA BOULEVARD



Northeast



South

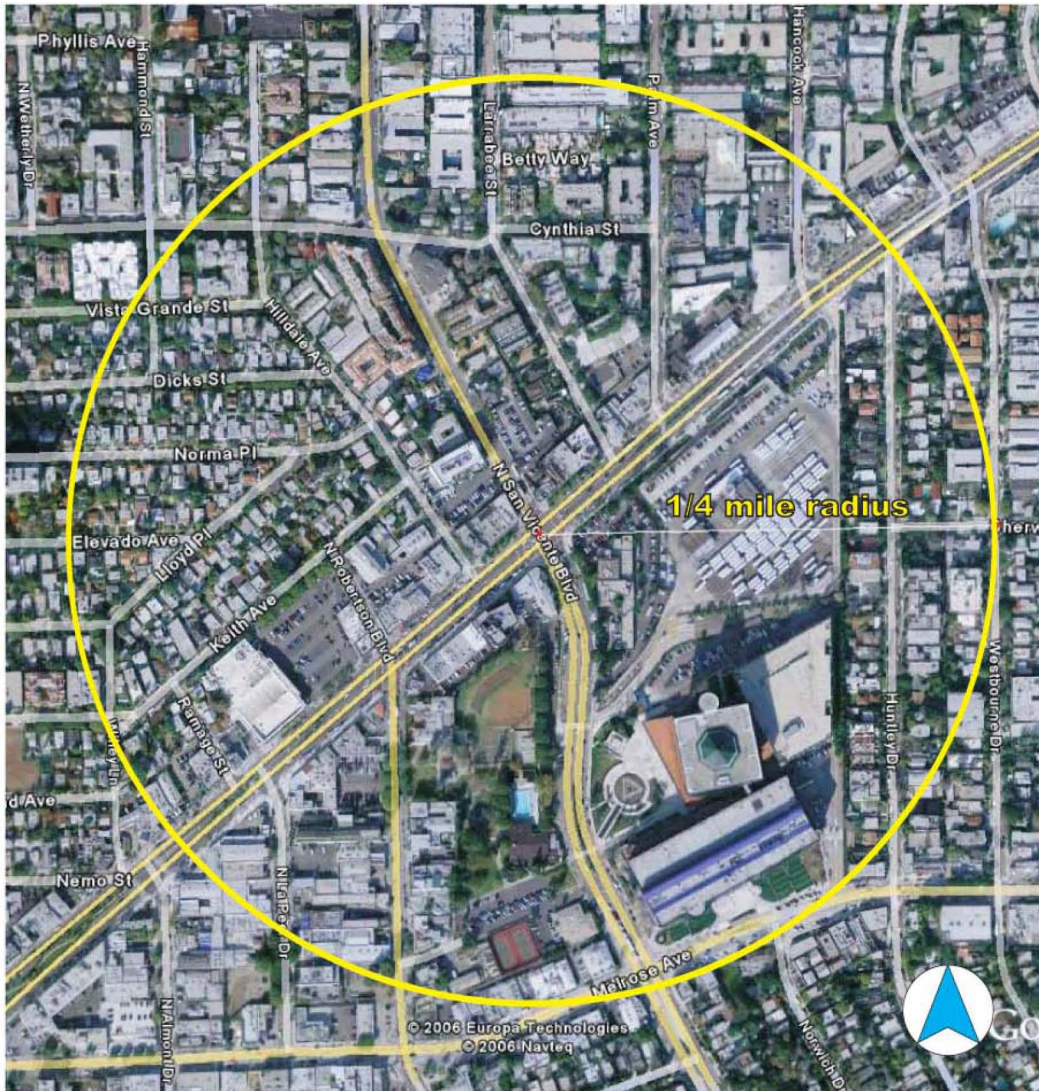


Southeast



View of residential area to the north

# STATION 8 SAN VICENTE BOULEVARD AND SANTA MONICA BOULEVARD



Source: 2005 Google

0 330' 660'

- Low-Density
- In City of West Hollywood
- Just northwest of Pacific Design Center
- In City of West Hollywood.
- Pedestrian-oriented
- Residential area separates ¼ mile radius and Beverly Hills limits.
- Bike Path
- Residential area separates ¼ mile radius and Beverly Hills limits.
- Pedestrian-oriented.
- Feeder buses:
- Just northwest of Pacific Design Center
  - METRO 4, 304 along Santa Monica Blvd into Beverly Hills
  - METRO Rapid 704 will replace 304
- Feeder buses:
  - METRO 305, 550 along San Vicente Bl
    - Metro 4, 304 along Santa Monica Blvd into Beverly Hills
    - Metro Rapid 704 will replace 304
    - Metro 305, 550 along San Vicente Bl
- AM Peak On-Boards: 4,350
- PM Peak On-Boards: 5,132

**KAKU ASSOCIATES**  
A Corporation

**KAKU ASSOCIATES**  
A Corporation

# STATION 8 SAN VICENTE BOULEVARD AND SANTA MONICA BOULEVARD



Northeasterly view of Santa Monica Bl



Pedestrian crossing



Pedestrian crossing between intersections

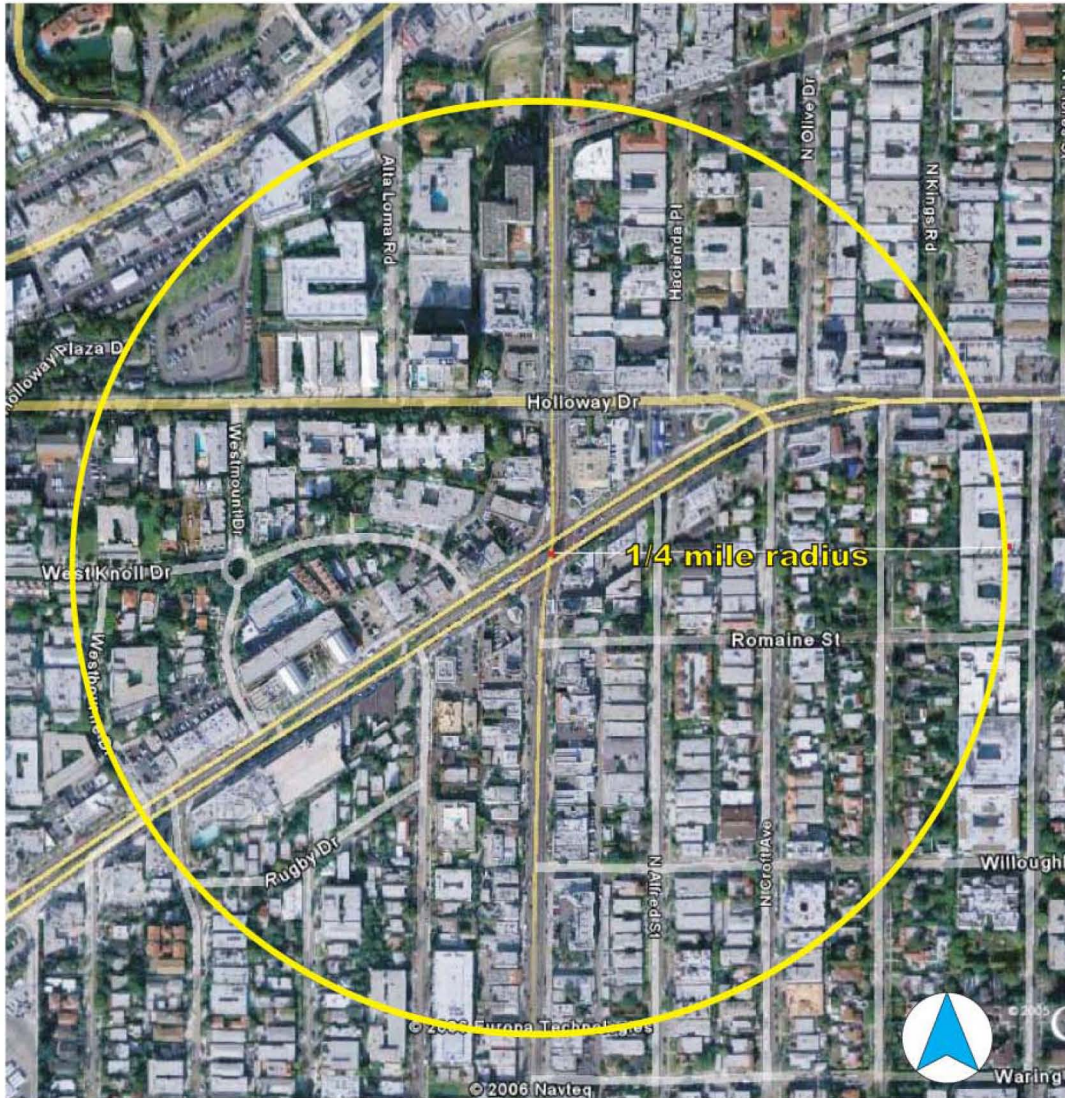


Pedestrian environment along Santa Monica Bl



View to the north

# STATION 9 SANTA MONICA BOULEVARD AND LA CIENEGA BOULEVARD



- Low-Density.
  - In City of West Hollywood
- In City of West Hollywood.
  - Pedestrian-oriented
- Bike Path
- Pedestrian-oriented.
  - Residential area to northwest
- Heavy through traffic.
  - Heavy Traffic
- Feeder buses:
  - Metro 4, 304 along Santa Monica Blvd into Beverly Hills
  - Metro 704 will replace 304
  - Metro 105, RAPID 705 along La Cienega Blvd
- AM Peak On-Boards: 1,210
- PM Peak On-Boards: 1,494

Source: 2005 Google

0 330' 660'

# STATION 9 SANTA MONICA BOULEVARD AND LA CIENEGA BOULEVARD



Santa Monica Bl W of La Cienega Bl



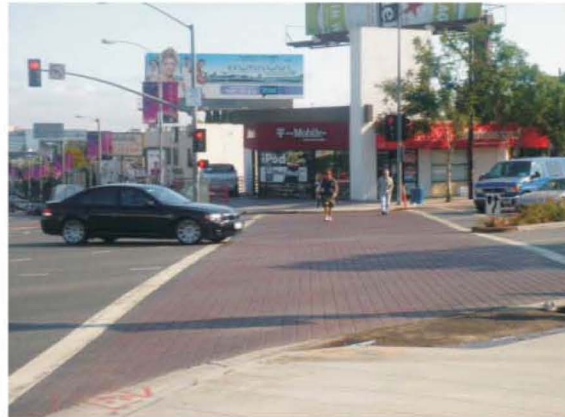
View east on Santa Monica Bl



View south of La Cienega Bl

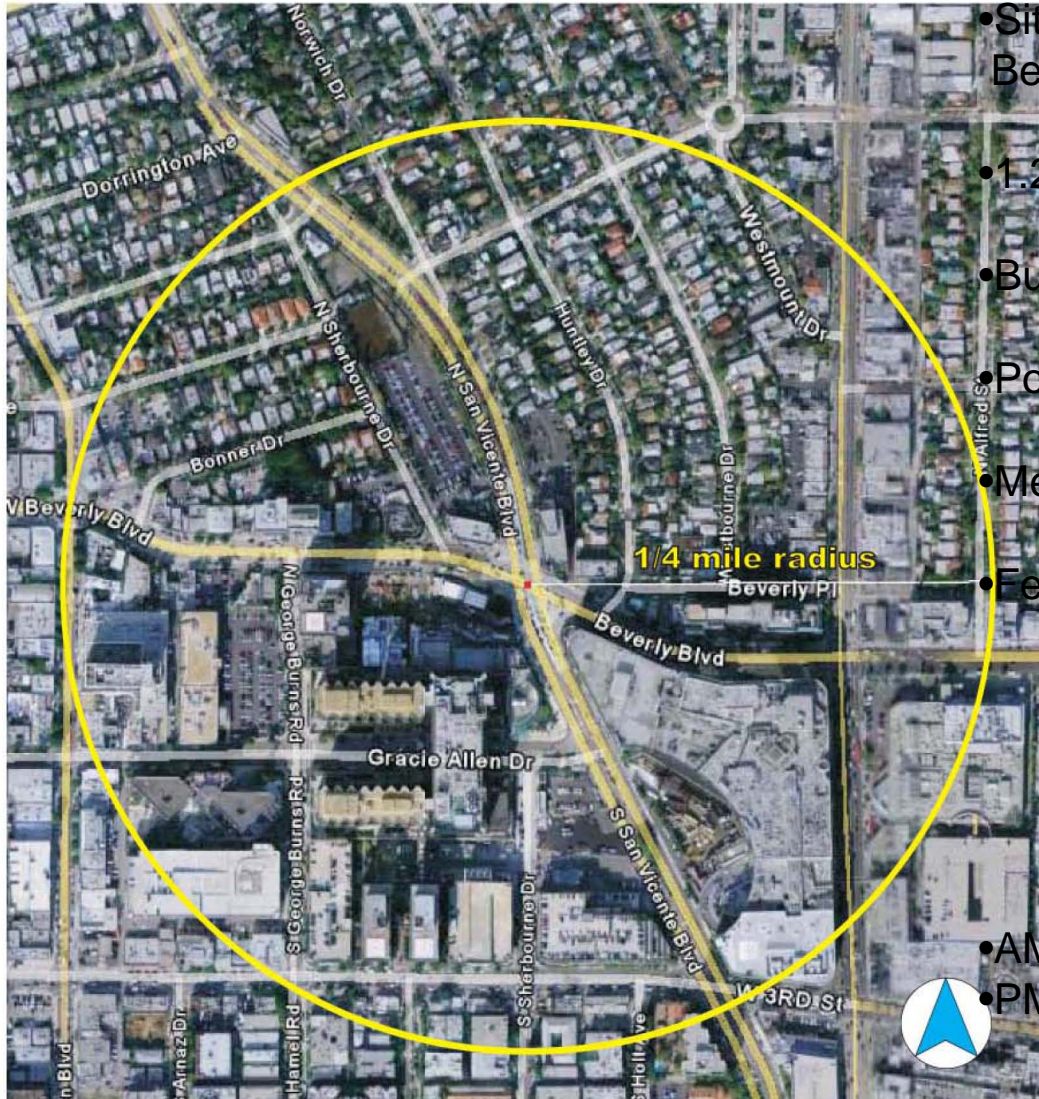


View west on Santa Monica Bl



West pedestrian crossing

# STATION 10 SAN VICENTE BOULEVARD AND BEVERLY BOULEVARD



- Site of major activity centers  
Beverly Center & Cedars-Sinai.
  - Beverly Center & Cedars-Sinai
- 1.25 miles from Fairfax & Wilshire.
  - Busy, wide Fair section
  - Poor pedestrian access
- Busy, wide intersection.
  - Medium-scale retail
- Poor pedestrian access.
  - METRO Rapid 714 from N. Santa Monica Bl to West. Bl
- Medium-scale retail to west. Bl
  - METRO 14 from Beverly Bl, through N. Santa Monica Bl and Canon Dr south to Beverly Dr
- Feeder buses.
  - Metro Rapid 714 from N. Santa Monica Bl to Beverly Bl
  - METRO 305, 550 along San Vicente Bl
  - Metro 14 from Beverly Bl, through N. Santa Monica Bl and Canon Dr south to Beverly Dr
  - Metro 305, 550 along San Vicente Bl
- AM Peak On-Boards: 3,043
- PM Peak On-Boards: 2,671

Source: 2005 Google

0 330' 660'

# STATION 10 SAN VICENTE BOULEVARD AND BEVERLY BOULEVARD



Beverly Center



Cedars-Sinai & Beverly Center



Southeast pedestrian crossing

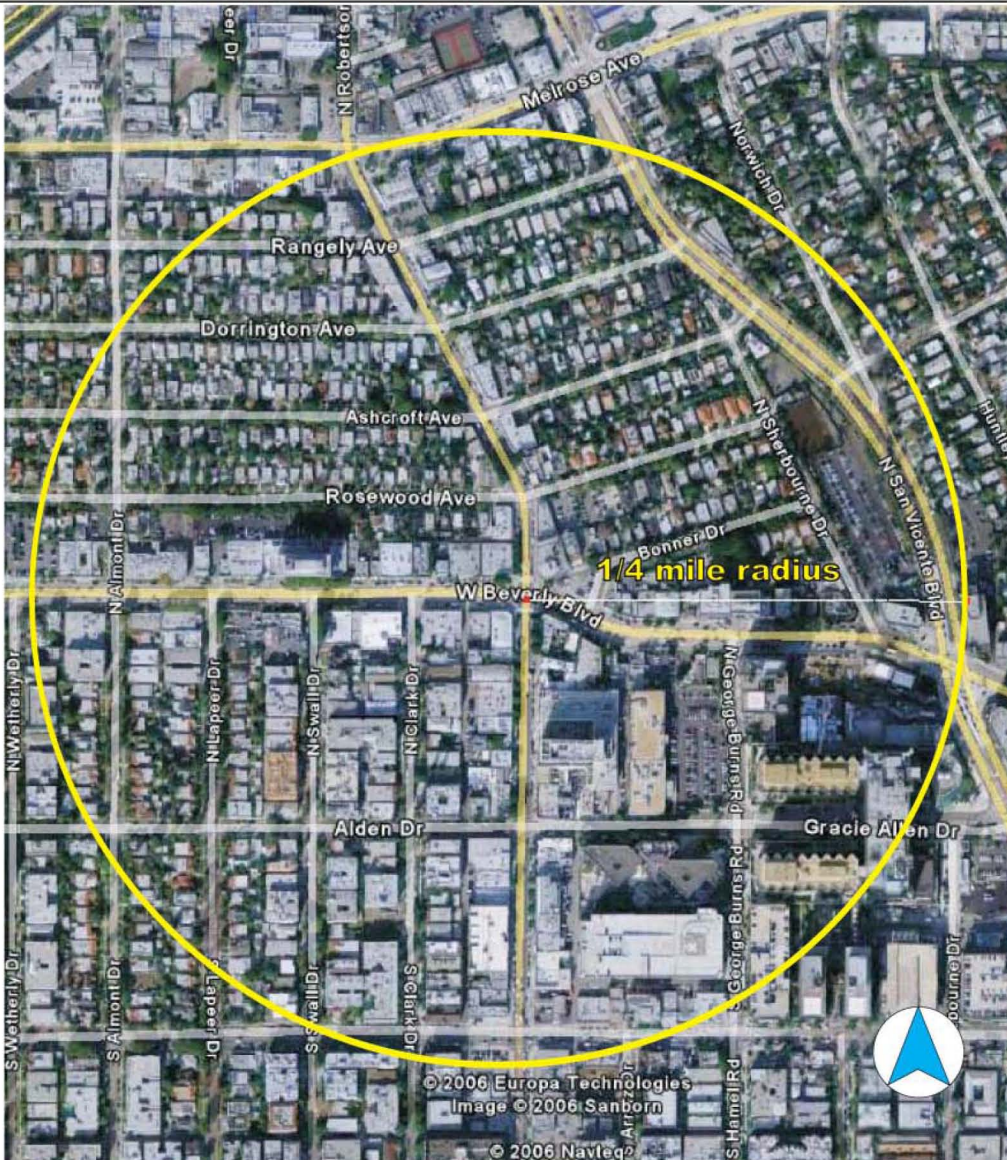


View south on San Vicente Bl



Westerly view on Beverly Bl

# STATION 11 BEVERLY BOULEVARD AND ROBERTSON BOULEVARD



Source: 2005 Google

© 2006 Europa Technologies  
Image © 2006 Sanborn  
© 2006 Navteq

0 330' 660'

- 1/4 mile radius captures Cedars-Sinai.
- Beverly Center is over 1/4 mi to East.
  - At City of Los Angeles & West Hollywood lines
- 1.6 miles to Fairfax & Wilshire.
  - Pleasant pedestrian environment
- Not in Beverly Hills, at lines of Los Angeles & West Hollywood.
  - Small retail along Robertson Bl
- Beverly Center & Cedars-Sinai over 1/4 mi to East
- Pleasant pedestrian environment.
- Residential area to northwest
- Small retail along Robertson Bl.
  - Problems with parking in residential area
- Low-density residential area to northwest.
  - Feeder buses:
- Feeder buses:
  - METRO Rapid 714 from N. Santa Monica Blvd to Beverly Bl
  - Metro Rapid 714 from N. Santa Monica Bl to Beverly Bl
  - METRO 14 from Beverly Bl through N. Santa Monica Bl and through N. Santa Monica Bl and Coughlin Dr south to Beverly Bl
  - METRO 220 along Robertson Bl
  - Metro 220 along Robertson Bl

- AM Peak On-Boards: 996
- PM Peak On-Boards: 1,006



# STATION 11 BEVERLY BOULEVARD AND ROBERTSON BOULEVARD



Residential neighborhood near intersection



Retail between Wilshire & Beverly Bl on Robertson Bl



View north on Robertson Bl



View south on Robertson Bl



View west on Beverly Bl

# EXISTING TRAFFIC AND TRANSIT CONDITIONS

- The Wilshire route (Metro Lines 20, 21, 22, 720) combined is the heaviest-used bus line in Southern California.<sup>1</sup>
- La Cienega Bl is the only designated north-south arterial through Beverly Hills and has very heavy traffic. This is projected to increase regardless of roadway improvements.

[1] *Circulation Element of the Beverly Hills General Plan Update White Paper Series*, Kaku Associates, Inc., February 2006.