

(AirTalk)

≡ **KPCC** | 89.3FM

♥ DONATE

# Never Built: Los Angeles architecturally reimagined

▶ LISTEN • 16:28

## Ways to Subscribe

-  Apple
-  Google
-  Stitcher
-  NPR One
-  Spotify



**1 of 5**

Proposed Goodell Monorail, 1963 (Los Angeles County Metropolitan Transportation Authority Research Library and Archive)



## Can you imagine Los Angeles with a series of interconnected public parks? With major freeways cutting through canyons and hills? In an upcoming exhibit at Los Angeles' A+D Architecture and Design Museum, co-curators Sam Lubell and Greg Goldin explore a version of L.A. that was imagined, but never built.

Can you imagine Los Angeles with a series of interconnected public parks? With major freeways cutting through canyons and hills? In an upcoming exhibit at Los Angeles' A+D Architecture and Design Museum, co-curators Sam Lubell and Greg Goldin explore a version of L.A. that was imagined, but never built.

“[Never Built: Los Angeles](#)” will showcase skyscrapers and hilltop museums from famed architects that didn't make it into the city's skyline and will explore how the envisioned works might have changed L.A. – for good or bad. What do you think of Los Angeles architecture?

Would the city be better with more skyscrapers or more interconnected roads and public transportation? Could any of the imagined architecture be ruinous to Los Angeles lifestyle or culture? What would you change or keep the same? A+D curators Lubell and Goldin join Larry to discuss their upcoming exhibit and the architecture that could have transformed Los Angeles.

### Guests:

**Sam Lubell**, co-curator of “[Never Built: Los Angeles](#)” at the A+D Architecture and Design Museum and co-author of the forthcoming book by the same name

### Greg Goldin

, co-curator of “[Never Built: Los Angeles](#)” at the A+D Architecture and Design Museum and co-author of the forthcoming book by the same name

Stay Connected



# Support AirTalk Today

Your donation powers all the news and programming you value.

Monthly

One-Time Donation

\$5/mo

\$10/mo

\$15/mo

\$125/mo - Leadership Circle

\$ other amount /mo

CONTINUE →

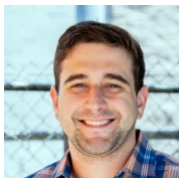
## Meet AirTalk's Team



**Larry Mantle**

(he/him)

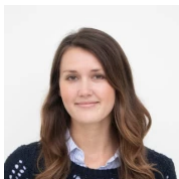
Host, AirTalk & FilmWeek



**Matt Dangelantonio**

(he/him)

Senior Producer, AirTalk



**Lindsey Wright**

(she/her)

Producer, AirTalk & FilmWeek



**Lucy Copp**

Associate Producer, AirTalk & FilmWeek



### Manny Valladares

(he/him)

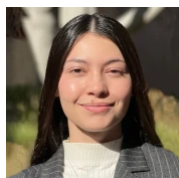
Assistant Producer, AirTalk & FilmWeek



### Daniel Martinez

(he/him)

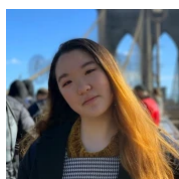
Assistant Producer, AirTalk



### Payton Seda

(she/her)

Apprentice News Clerk, AirTalk & FilmWeek



### Stina Chang

(she/her)

Apprentice News Clerk, AirTalk

**KPCC | 89.3FM**  

KPCC is part of Southern California Public Radio (SCPR), a member-supported public media network. For the latest news, visit our partner site:



[The Brief](#)   [Podcasts](#)   [Events](#)

©2022 Southern California Public Radio

[About KPCC](#)

[KPCC In Person](#)

[Program Schedule](#)

[Contact Us](#)

[AirTalk](#)

[KPCC Story Archive](#)

[FilmWeek](#)

[Careers](#)



[Terms of Use](#)

[FCC Public Files KUOR-FM](#)

[Privacy](#)

[FCC Public Files KVLA-FM](#)

[EEO Public Reports](#)

[FCC Public Files KJAI-FM](#)

[FCC Public Files KPCC-FM](#)

[FCC Applications Public Notices](#)



KPCC

**On Point**