

S.C.R.T.D.

FLEET

FACT

BOOK

205
XERO COPY

SCRTD
1985
.S2
c.1

Prepared and Issued By:

Equipment Engineering Department
Southern California Rapid Transit District
425 South Main Street
Los Angeles, California 90013

Date of Issue:

January 2, 1985

TABLE OF CONTENTS

	<u>Page</u>
Preface	01
Definition	02
1000	03
2400	04
2600	05
3000	06
3100	07
3300	08
4000	09
4100	10
4200	11
4300	12
4400	13
5000	14
5200	15
5225	16
5300	17
5375	18
5400	19
5700	20
5735	21
5800	22
5900	23

TABLE OF CONTENTS

6100	24
7000	25
7100	26
7200	27
7300	28
7400	29
7500	30
8000	31
8200	32
9200	33
9250	34
9900	35

PREFACE

The SCRTD Fleet Fact Book has been developed for use as a general reference guide to the SCRTD coach fleet. As the SCRTD coach fleet is quite diverse, the SCRTD Fleet Fact Book contains those details which are most generally used.

It is intended that the SCRTD Fleet Fact Book be updated on an "as needed" basis as coach equipment is purchased or retired, or when significant modifications are made to coaches in the existing fleet.

Questions and/or comments regarding the SCRTD Fleet Fact Book should be directed to Mr. Michael Leahy of the Equipment Engineering Department, extension 6612.

For detail such as specific division and schedule assignments, the reader is referred to the following SCRTD report documents:

<u>Title</u>	<u>Designation</u>	<u>Issued</u>
<u>Coaches Owned by SCRTD</u>	Report NB-1001	Monthly
<u>Equipment Deployment Report</u>	Report #4-12	Periodically
<u>Scheduled Service Operating Cost Factors</u>	Report #4-24	Periodically 1-2-85

Acknowledgement of Primary Contributors:

Michael Leahy	Equipment Engineering Department; Project Manager
Allan Styffe	Operations General Department; Photography
Dwight Duperon:	Equipment Engineering Department; Data Compilation/Layout
Neil Bjornsen:	Maintenance Department; Editorial/Technical Review

Prepared and Issued By:

Equipment Engineering Department
Southern California Rapid Transit District

Date of Issue:

January 2, 1985

DEFINITION OF TERMS USED IN THE SCRTD FLEET FACT BOOK

Weight: Coach weight when fueled but without passengers or driver.

Width: Body width excluding fenders or mirrors.

Height: Highest point on coach body excluding radio antenna.

Wheel Base: Distance from center point of front axle to center point of rear axle.

Length: Body length excluding bumpers or tow eyes.

Date Issued: 1-2-1985

1000

Date Issued: 1-2-1985

(1000-1099)

MANUFACTURER: GMC

MODEL: T8H-5307A

STATUS: Active

SCRTD DATA

DELIVERY YEAR: 1973
NUMBER OWNED: 97 (12-31-84)
SEATING CAPACITY: 47

MODIFICATIONS: Eight coaches were retrofitted with Thermo King A/C Compressors. Coaches 1090-1099 are equipped with public address systems.

NOTES & COMMENTARY: First GMC 40-foot coaches equipped with A/C push type exit doors with air assist, and DD-3 type parking/emergency brakes. DD-3 brakes were removed in 1974 after fire on coach 1088. First coach equipment assigned to Los Angeles - El Monte Busway in 1973.

MANUFACTURER'S DATA

LENGTH:	40'	WIDTH:	102"
HEIGHT:	119"	WEIGHT:	22,300 lbs.
WHEEL BASE:	23' 9"	FUEL CAPACITY:	95 U.S. Gallons
EXIT DOOR TYPE:	Push Type (Air Assist)	KNEELING:	No
WHEELCHAIR LIFT:	No	AIR CONDITIONING:	Yes
POWER STEERING:	No		

ENGINE: DDA (GMC), 8V71N, 260 HP (C-55 injectors): 230 HP (C-60 injectors)
Oil Capacity: 34 U.S. quarts

TRANSMISSION: DDA, VS2-8
Fluid Capacity: 28-32 U.S. quarts.



2400

Date Issued: 1-2-1985

(2400-2404)

MANUFACTURER: GMC

MODEL: TDH-4517

STATUS: Pending Disposal

SCRTD DATA

DELIVERY YEAR: 1960 (To Pasadena City Lines)

NUMBER OWNED: 5 (12-31-84)

SEATING CAPACITY: 45

MODIFICATIONS: None

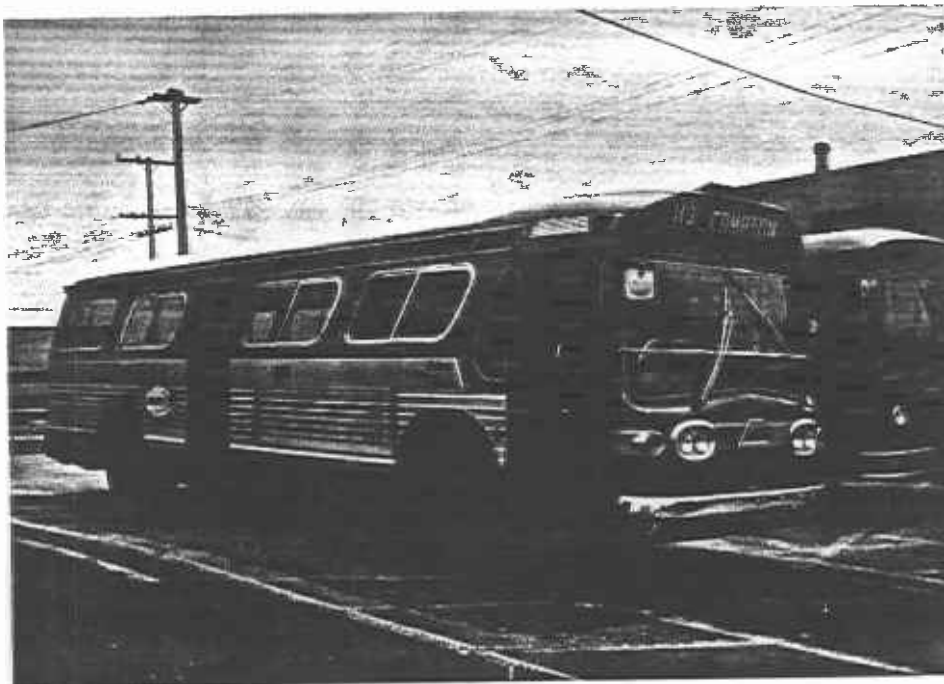
NOTES & COMMENTARY: Buses acquired from Pasadena City Lines in 1968 when that property was acquired by the District.

MANUFACTURER'S DATA

LENGTH:	35'	WIDTH:	96"
HEIGHT:	118"	WEIGHT:	18,960 lbs.
WHEEL BASE:	19'	FUEL CAPACITY:	80 U.S. Gallons
EXIT DOOR TYPE:	4-Leaf/Folding Non-Treadle	KNEELING:	No
WHEELCHAIR LIFT:	No	AIR CONDITIONING:	No
POWER STEERING:	No		

ENGINE: GMC, 6V71, 195 HP
Oil Capacity: 24-26 U.S. quarts

TRANSMISSION: GMC, VH
Fluid Capacity: 27 U.S. quarts



2600

Date Issued: 1-2-1985

(2600-2602)
(2603-2604)

MANUFACTURER: GMC

MODEL: TDH-4519
STATUS: Pending Disposal

SCRTD DATA

DELIVERY YEAR: 1967 (To Pasadena City Lines)
NUMBER OWNED: 5 (12-31-84)
SEATING CAPACITY: 45

MODIFICATIONS: None

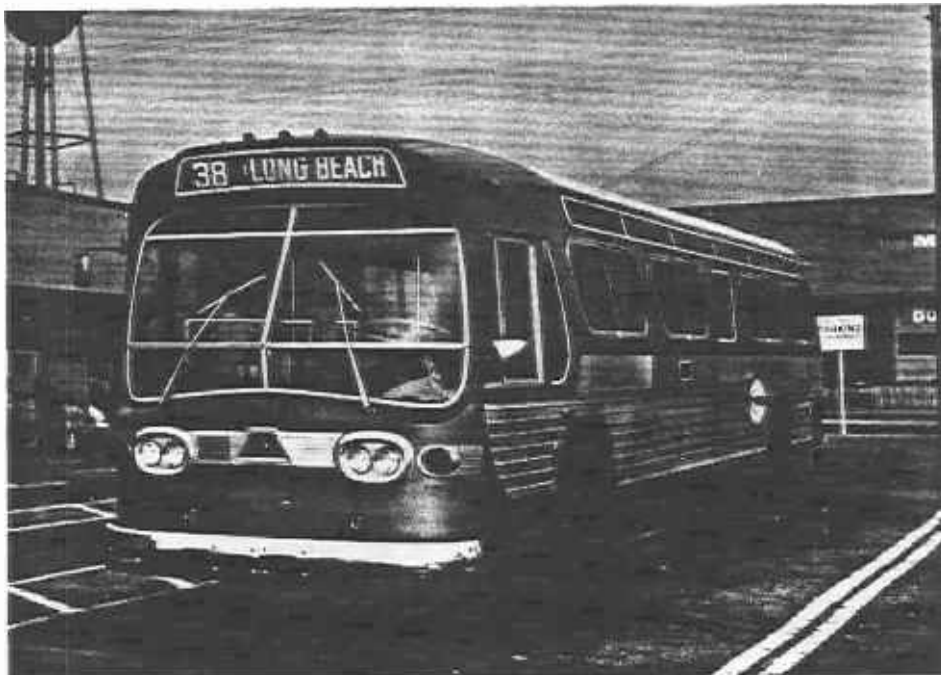
NOTES & COMMENTARY: These coaches were acquired from Pasadena City Lines when that property was acquired by the District in 1968.

MANUFACTURER'S DATA

LENGTH:	35'	WIDTH:	96"
HEIGHT:	118"	WEIGHT:	18,960 lbs.
WHEEL BASE:	19' 7"	FUEL CAPACITY:	80 U.S. Gallons
EXIT DOOR TYPE:	4-Leaf Folding	KNEELING:	No
WHEELCHAIR LIFT:	No	POWER STEERING:	No
AIR CONDITIONING:	2 have A/C (2603 and 2604)		

ENGINE: GMC, 6V71, 195 HP
Oil Capacity: 24-26 U.S. quarts

TRANSMISSION: GMC, VH
Fluid Capacity: 26 U.S. quarts



3000

Date Issued: 1-2-1985

(3000 - 3014)

MANUFACTURER: GMC

MODEL: 581A-5303A
STATUS: Active

SCRTD DATA

DELIVERY YEAR: 1968
NUMBER OWNED: 15 (12-31-84)
SEATING CAPACITY: 49

MODIFICATIONS: Transmission changed from manual to automatic shift in 1982.

NOTES & COMMENTARY: Single door, suburban style coaches with reclining seats, underfloor compartments and parcel racks above the seats. 14 of 15 - 3000 series coaches retrofitted with VS2-8 automatic transmissions in 1981/82. No. 3013 retained manual transmission for training use until mid-1984 when automatic transmission was installed. All 15 - 3000 series coaches received major rehabilitation work in 1984.

DDA VS2-8 (Installed 1981/82).
Fluid Capacity: 28-32 U.S. quarts.

MANUFACTURER'S DATA

LENGTH:	40'	WIDTH:	96"
HEIGHT:	119"	WEIGHT:	22,600 lbs.
WHEEL BASE:	23' 9"	FUEL CAPACITY:	125 U.S. Gallons
EXIT DOOR TYPE:	None	KNEELING:	No
WHEELCHAIR LIFT:	No	AIR CONDITIONING:	Yes
POWER STEERING:	No		

ENGINE: DDA (GMC), 8V71N, 260-280 HP
Oil Capacity: 34-36 U.S. quarts

TRANSMISSION: Dana-Spicer, 7145VH (As Delivered)
Fluid Capacity: 11 1/2 - 12 1/2 U.S. quarts.



3100

Date Issued: 1-2-1985

(3100-3299)

MAUFACTURER: GMC

MODEL: T8H-5307A
STATUS: Active

SCRTD DATA

DELIVERY YEAR: 1974
NUMBER OWNED: 193 (12-31-84)
SEATING CAPACITY: 51

MODIFICATIONS: None

NOTES & COMMENTARY: First GMC coaches with sealed, single piece, side windows. First buses with roof mounted escape hatch. #3100-3249 equipped with AVM device.

MANUFACTURER'S DATA

LENGTH:	40'	WIDTH:	102"
HEIGHT:	121"	WEIGHT:	22,600 lbs.
WHEEL BASE:	23' 8"	FUEL CAPACITY:	125 U.S. Gallons
EXIT DOOR TYPE:	Push Type (Air Assist)	KNEELING:	No
WHEELCHAIR LIFT:	No	AIR CONDITIONING:	Yes
POWER STEERING:	No		

ENGINE: DDA (GMC), 8V71, 280 HP
Oil Capacity: 28-34 U.S. quarts

TRANSMISSION: DDA, 8VS2
Fluid Capacity: 28-32 U.S. quarts



3300

Date Issued: 1-2-1985

(3300-3714)

MANUFACTURER: Neoplan USA

MODEL: AN-440-A
STATUS: Active

SCRTD DATA

DELIVERY YEAR: 1984
NUMBER OWNED: 415 (12-31-84)
SEATING CAPACITY: 43

MODIFICATIONS: The first order of coaches to have A.T.E.C. (Allison Transmission Electronic Control) units. No's. 3690-3714 (25 buses) are equipped with first hydraulic output retarder units purchased by District.

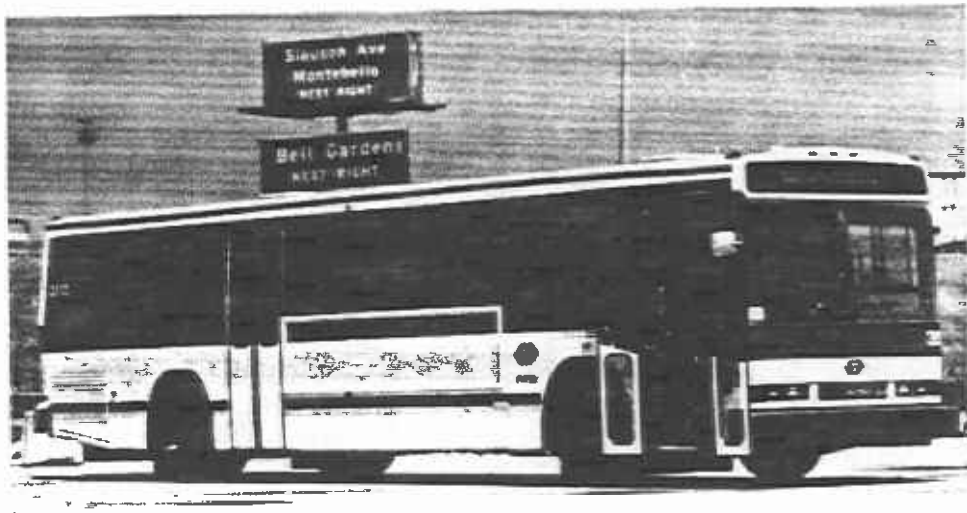
NOTES & COMMENTARY: First order of buses purchased from Neoplan USA.

MANUFACTURER'S DATA

LENGTH:	40'	WIDTH:	102"
HEIGHT:	120"	WEIGHT:	28,240 lbs.
WHEEL BASE:	22' 8"	FUEL CAPACITY:	195 U.S. Gallons
EXIT DOOR TYPE:	Push Type (Air Assist)	KNEELING:	Yes
WHEELCHAIR LIFT:	EEC	AIR CONDITIONING:	Yes
POWER STEERING:	Yes		

ENGINE: DDA (GMC), 6V-92TA, 294 HP
Oil Capacity: 38 U.S. quarts

TRANSMISSION: DDA, HT 747 (3300-3689); HTB 748 (3690-3714)
Fluid Capacity: 36 U.S. quarts.



4000

Date Issued: 1-2-1985

(4000-4054)
(4055-4058)

MANUFACTURER: Flxible

MODEL: 411-GD-C2
STATUS: Active

SCRTD DATA

DELIVERY YEAR: 1966
NUMBER OWNED: 59 (12-31-84)
SEATING CAPACITY: 35

MODIFICATIONS: Transmission changed from Dana-Spicer to Detroit Allison in 1981/82.

NOTES & COMMENTARY: Coaches are painted as minibuses. Four coaches with A/C (#4055-4058) were acquired from Pomona Valley Municipal Transit System in 1968. Seating Capacity reduced to 31 in four coaches due to interior baggage rack unit across from rear door, for use on LAX Airport Shuttle Route 1976-1984.

MANUFACTURER'S DATA

LENGTH:	30' 6"	WIDTH:	96"
HEIGHT:	(116" no A/C) (124" with A/C)	WEIGHT:	16,300 lbs.
EXIT DOOR TYPE:	4-Leaf Folding w/Treadle Step	FUEL CAPACITY:	80 U.S. Gallons
WHEELCHAIR LIFT:	No	KNEELING:	No
POWER STEERING:	No	AIR CONDITIONING:	4 have A/C

ENGINE: Cummins, V185, 160 HP
Oil Capacity: 24-28 U.S. quarts.

TRANSMISSION: Dana-Spicer, 316 (As Delivered)
Fluid Capacity: 26 U.S. quarts.

DDA # AT-54 (Installed 1981/82)
Fluid Capacity: 28 U.S. quarts



4100

Date Issued: 1-2-1985

(4100-4131) TC-83020-32

(4132-4161) TC-84025-30

MANUFACTURER: Carpenter Body Works MODEL: CBW-300
STATUS: Active

SCRTD DATA

DELIVERY YEAR: 1984
NUMBER OWNED: 62 (12-31-84)
SEATING CAPACITY: 27

MODIFICATIONS: None.

NOTES & COMMENTARY: These are the only coaches in the District's fleet with the DDA 6V53T engine. 4100-4131 have EEC lift in rear door. 4132-4161 have Lift-U lift in front door.

Prime contractor was Lawson National Distributing Company.

MANUFACTURER'S DATA

LENGTH:	30'	WIDTH:	94 1/2"
HEIGHT:	114"	WEIGHT:	22,900 lbs.
WHEEL BASE:	13' 9"	FUEL CAPACITY:	126 U.S. Gallons
EXIT DOOR TYPE:	Air Assist (Push Type)	KNEELING:	Yes
WHEELCHAIR LIFT:	EEC 4100 to 4131 Lift-U 4132 to 4162	AIR CONDITIONING:	Yes
POWER STEERING:	Yes		

ENGINE: DDA (GMC), 6V53T, 225 HP
Oil Capacity: 14 U.S. quarts

TRANSMISSION: DDA, MT 643
Fluid Capacity: 22 U.S. quarts.



4200

Date Issued: 1-2-1985

(4200-4228)

MANUFACTURER: Flexible

MODEL: 111-DD-D51

STATUS: Active

SCRTD DATA

DELIVERY YEAR: 1968
NUMBER OWNED: 28 (12/31/84)
SEATING CAPACITY: 45

MODIFICATIONS: None

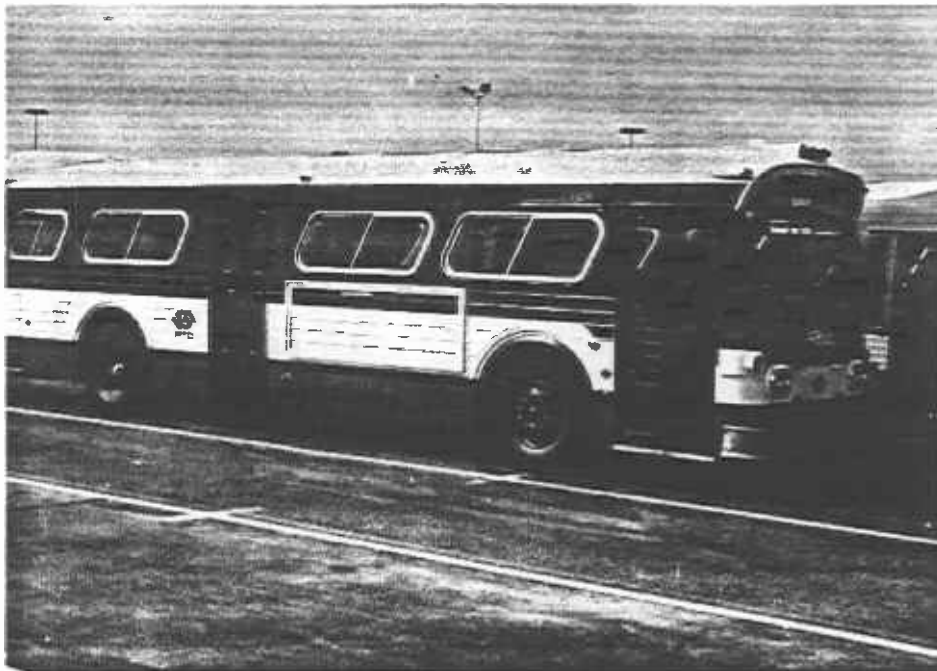
NOTES & COMMENTARY: First series of 35' coaches purchased from Flexible. Four buses (4225-4228) acquired with Pomona Valley Transit.

MANUFACTURER'S DATA

LENGTH:	35'	WIDTH:	96"
HEIGHT:	122"	WEIGHT:	21,600 lbs.
WHEEL BASE:	18' 9"	FUEL CAPACITY:	95 U.S. Gallons
EXIT DOOR TYPE:	Push Type (Air Assist)	KNEELING:	No
WHEELCHAIR LIFT:	No	AIR CONDITIONING:	Yes
POWER STEERING:	No		

ENGINE: DDA (GMC), 6V71, 195-210 HP
Oil Capacity: 28-30 U.S. quarts

TRANSMISSION: DDA, VS2-6
Fluid Capacity: 26-28 U.S. quarts



4300

Date Issued: 1-2-1985

(4300-4341)

MANUFACTURER: Flexible

MODEL: 111-DD-DO61

STATUS: Active

SCRTD DATA

DELIVERY YEAR: 1973

NUMBER OWNED: 41 (12-1-84)

SEATING CAPACITY: 45

MODIFICATIONS: None

NOTES & COMMENTARY: Second series of 35' coaches purchased from Flexible.

MANUFACTURER'S DATA

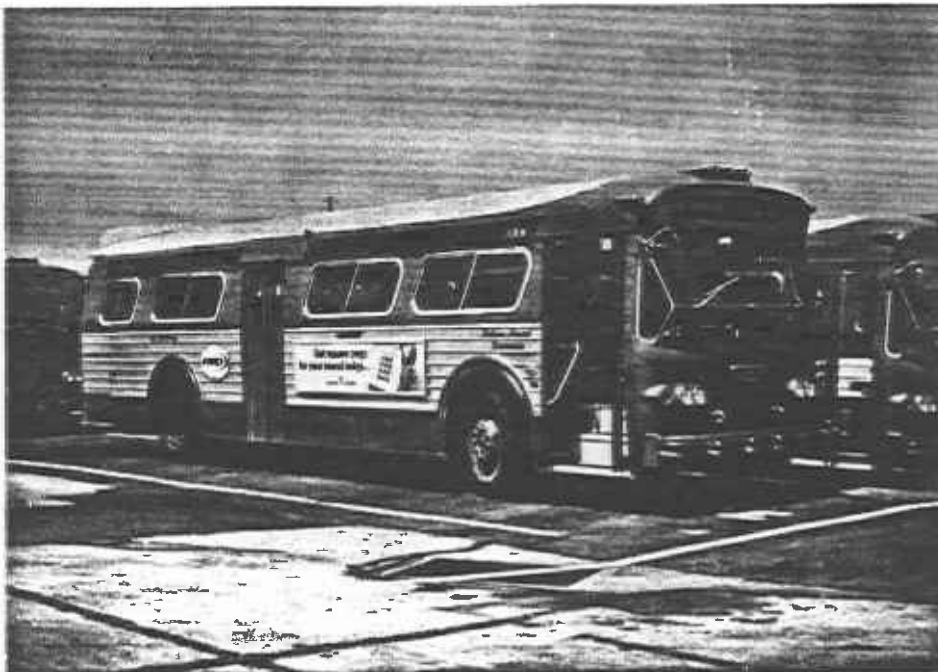
LENGTH:	35'	WIDTH:	96"
HEIGHT:	124"	WEIGHT:	21,600 lbs.
WHEEL BASE:	18' 9"	FUEL CAPACITY:	95 U.S. Gallons
EXIT DOOR TYPE:	Push Type (Air Assist)	KNEELING:	No
WHEELCHAIR LIFT:	No		
POWER STEERING:	No		

ENGINE: DDA (GMC), 8V71, 260 HP

Oil Capacity: 33-36 U.S. quarts

TRANSMISSION: DDA, VS2-8

Fluid Capacity: 28-32 U.S. quarts.



4400

Date Issued: 1-2-1985

(4400-4434)

MANUFACTURER: GMC

MODEL: T70-604 (RTS II-04)
STATUS: Active

SCRTD DATA

DELIVERY YEAR: 1982
NUMBER OWNED: 35 (12-1-84)
SEATING CAPACITY: 34

MODIFICATIONS: RTD and GMC modified exit door so door would close on roadway with high crowns. Steel fuel tank replaced plastic tanks.

NOTES & COMMENTARY: First of the 35' coaches of the RTS II design.

MANUFACTURER'S DATA

LENGTH:	35'	WIDTH:	96"
HEIGHT:	119"	WEIGHT:	24,360 lbs.
WHEEL BASE:	19' 10"	FUEL CAPACITY:	125 U.S. Gallons
EXIT DOOR TYPE:	Push Type (Air Assist)	KNEELING:	Yes
WHEELCHAIR LIFT:	GMC at rear door	AIR CONTITIONING:	Yes
POWER STEERING:	Yes		

ENGINE: DDA (GMC), 6V92TA (Silver), 310-320 HP
Oil Capacity: 25 U.S. quarts

TRANSMISSION: DDA, V-730D
Fluid Capacity: 34-36 U.S. quarts.



5000

Date Issued: 1-2-1985

(5000-5099)

MANUFACTURER: GMC

MODEL: TDH-5303

STATUS: Pending Disposal

SCRTD DATA

DELIVERY YEAR: 1963

NUMBER OWNED: 15 (12-31-84)

SEATING CAPACITY: 51

MODIFICATIONS: Two coaches of this series were modified into Maintenance Department mobile classrooms in 1984 - (coach #'s 5053 and 5090). One coach of this series was modified into mobile classroom in 1980 - (#5000), for radio instruction use.

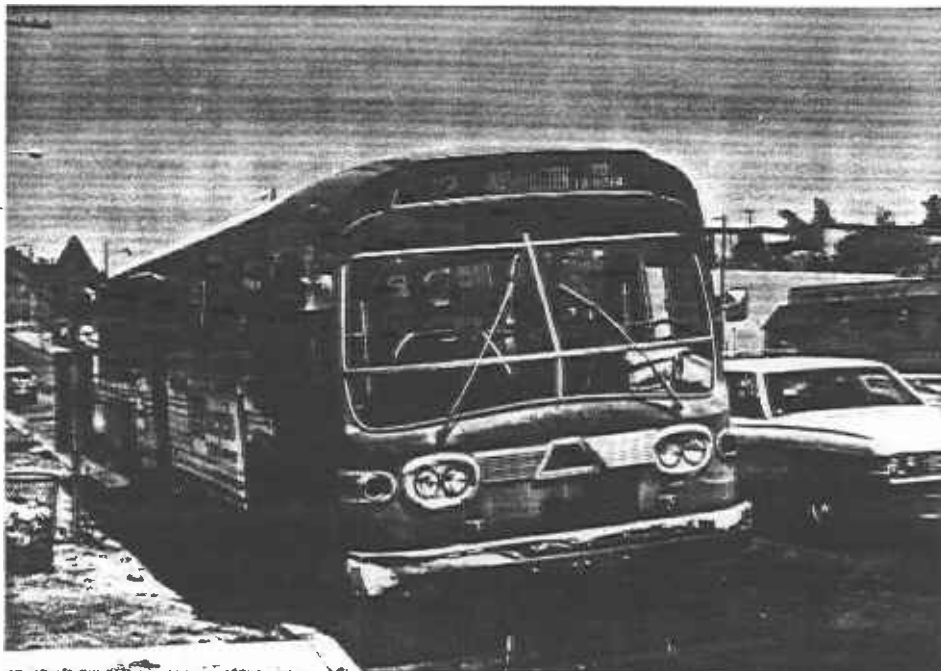
NOTES & COMMENTARY: "New Look" GMC coaches purchased by RTD predecessor agency MTA to replace last of streetcars and trolley coaches in March, 1963. Approximately 10-15 coaches of this series to be retained for Instruction Department use.

MANUFACTURER'S DATA

LENGTH:	40'	WIDTH:	102"
HEIGHT:	118"	WEIGHT:	19,890 lbs.
WHEEL BASE:	23' 8"	FUEL CAPACITY:	95 U.S. Gallons
EXIT DOOR TYPE:	4-Leaf Folding w/Treadle Step	KNEELING:	No
WHEELCHAIR LIFT:	No	AIR CONDITIONING:	No
POWER STEERING:	No		

ENGINE: DDA (GMC), 6V71, 210 HP
Oil Capacity: 24-26 U.S. quarts.

TRANSMISSION: GMC, VH
Fluid Capacity: 27 U.S. quarts.



5200

Date Issued: 1-2-1985

(5200-5224)

MANUFACTURER: GMC

MODEL: TDH-5301

STATUS: Pending Disposal

SCRTD DATA

DELIVERY YEAR: 1960
NUMBER OWNED: 4 (12-31-84)
SEATING CAPACITY: 46

MODIFICATIONS: None

NOTES & COMMENTARY: Equipped with suburban seating and parcel rack at front of coach.

MANUFACTURER'S DATA

LENGTH:	40'	WIDTH:	102"
HEIGHT:	118"	WEIGHT:	20,000 lbs.
WHEEL BASE:	23' 8"	FUEL CAPACITY:	80 U.S. Gallons
EXIT DOOR TYPE:	4-Leaf Folding w/Treadle Step	KNEELING:	No
WHEELCHAIR LIFT:	No	AIR CONDITIONING:	No
POWER STEERING:	No		

ENGINE: GMC, 6V71, 210 HP
Oil Capacity: 24-26 U.S. quarts.

TRANSMISSION: GMC, VH
Fluid Capacity: 27 U.S. quarts.



5225

Date Issued: 1-2-1985

(5225-5254)

MANUFACTURER: GMC

MODEL: TDH-5301

STATUS: Pending Disposal

SCRTD DATA

DELIVERY YEAR: 1961
NUMBER OWNED: 29 (12-31-84)
SEATING CAPACITY: 51

MODIFICATIONS: None

NOTES & COMMENTARY: Equipped with high-back suburban type seats on elevated platform floor. Only "New Look" transit coaches produced by GMC in this configuration.

MANUFACTURER'S DATA

LENGTH:	40'	WIDTH:	102"
HEIGHT:	118"	WEIGHT:	19,890 lbs.
WHEEL BASE:	23' 8"	FUEL CAPACITY:	95 U.S. Gallons
EXIT DOOR TYPE:	4-Leaf Folding w/Treadle Step	KNEELING:	No
WHEELCHAIR LIFT:	No	AIR CONDITIONING:	No
POWER STEERING:	No		

ENGINE: GMC, 6V71, 210 HP
Oil Capacity: 24-26 U.S. quarts.

TRANSMISSION: GMC, VH
Fluid Capacity: 27 U.S. quarts.



5300

Date Issued: 1-2-1985

(5300-5374)

MANUFACTURER: GMC
NAME: Dreamliner

MODEL: TDH-5301
STATUS: Pending Disposal

SCRTD DATA

DELIVERY YEAR: 1959/60
NUMBER OWNED: 58 (12-31-84)
SEATING CAPACITY: 51

MODIFICATIONS: None

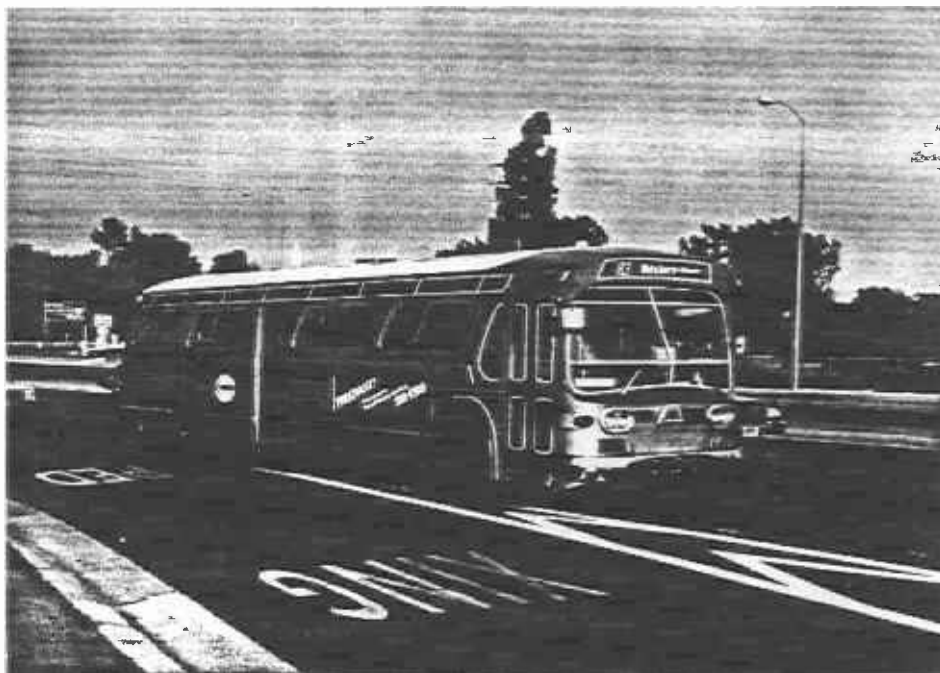
NOTES & COMMENTARY: First G.M. "New Look" buses in Los Angeles.

MANUFACTURER'S DATA

LENGTH:	40'	WIDTH:	102"
HEIGHT:	118"	WEIGHT:	19,890 lbs.
WHEEL BASE:	23' 8"	FUEL CAPACITY:	80 U.S. Gallons
EXIT DOOR TYPE:	4-Leaf Folding w/Treadle Step	KNEELING:	No
WHEELCHAIR LIFT:	No	AIR CONDITIONING:	No
POWER STEERING:	No		

ENGINE: GMC, 6V71, 210 HP
Oil Capacity: 26-28 U.S. quarts.

TRANSMISSION: GMC, VH
Fluid Capacity: 27 U.S. quarts.



5375

Date Issued: 1-2-1985

(5375-5397)

MANUFACTURER: GMC

MODEL: TDH-5301

STATUS: Pending Disposal

SCRTD DATA

DELIVERY YEAR: 1961 (To Memphis Transit Authority)

NUMBER OWNED: 15 (12-31-84)

SEATING CAPACITY: 53

MODIFICATIONS: None.

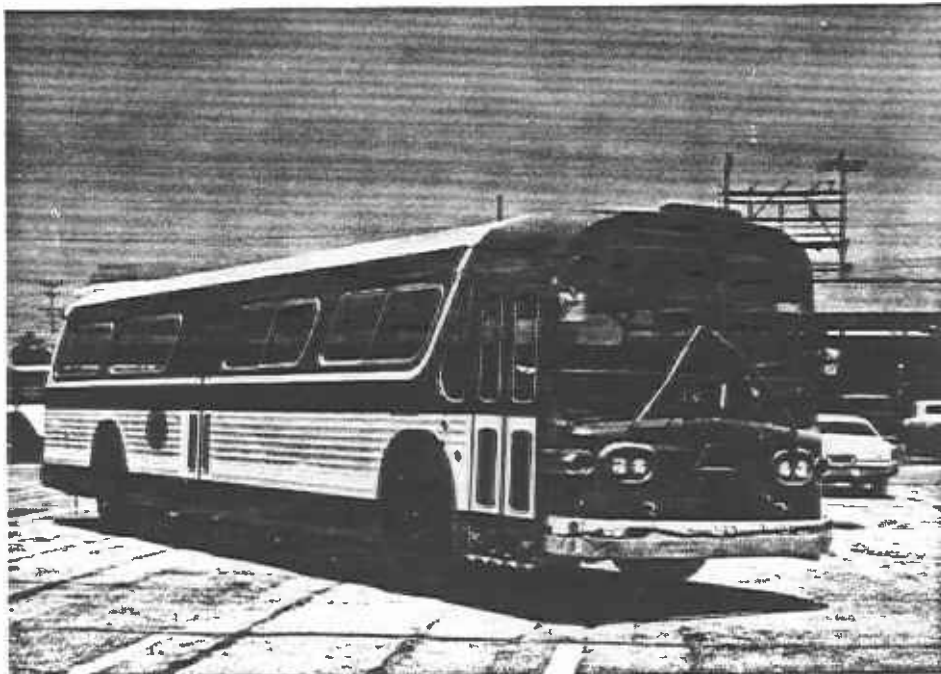
NOTES & COMMENTARY: Acquired as used buses from Memphis Transit Authority, Tennessee in 1975. One coach (#5375) was formerly a GMC demonstrator.

MANUFACTURER'S DATA

LENGTH:	40'	WIDTH:	102"
HEIGHT:	118"	WEIGHT:	19,890 lbs.
WHEEL BASE:	23' 8"	FUEL CAPACITY:	80 U.S. Gallons
EXIT DOOR TYPE:	Push Type Door/ Spring Return	KNEELING:	No
WHEELCHAIR LIFT:	No	AIR CONDITIONING:	Yes
POWER STEERING:	No		

ENGINE: GMC, 6V71, 210 HP
Oil Capacity: 26-28 U.S. quarts.

TRANSMISSION: GMC, VH
Fluid Capacity: 27 U.S. quarts.



5400

Date Issued: 1-2-1985

(5400-5479)

MANUFACTURER: GMC

MODEL: TDH-5301

STATUS: Pending Disposal

SCRTD DATA

DELIVERY YEAR: 1961
NUMBER OWNED: 54 (12-31-84)
SEATING CAPACITY: 51

MODIFICATIONS: None

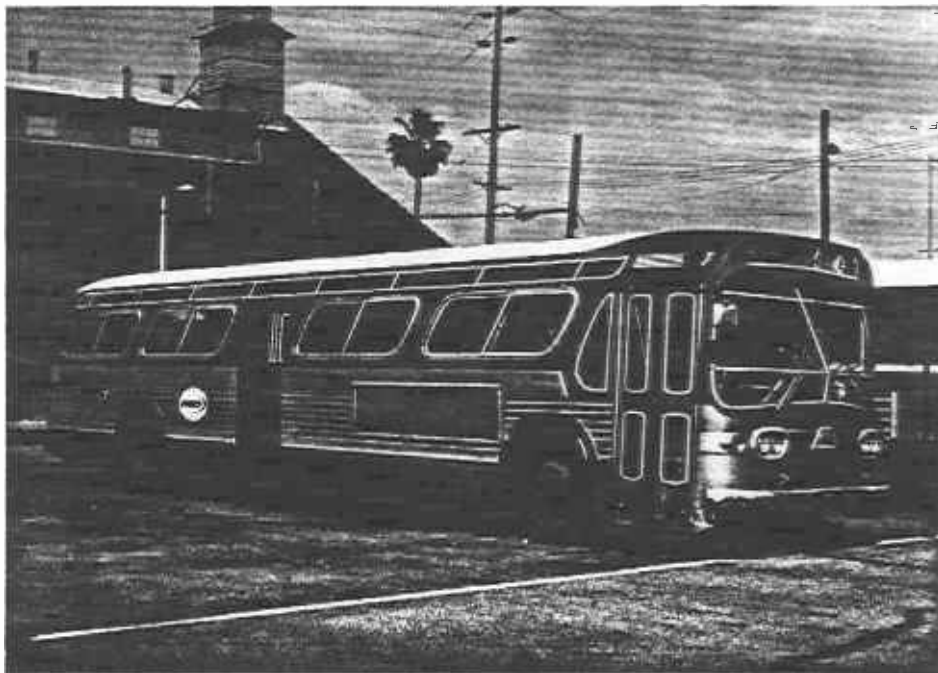
NOTES & COMMENTARY: None

MANUFACTURER'S DATA

LENGTH:	39' 10"	WIDTH:	102"
HEIGHT:	124"	WEIGHT:	19,850 lbs.
WHEEL BASE:	23' 8"	FUEL CAPACITY:	95 U.S. Gallons
EXIT DOOR TYPE:	4-Leaf Folding w/Treadle Step	KNEELING:	No
WHEELCHAIR LIFT:	No	AIR CONDITIONING:	No
POWER STEERING:	No		

ENGINE: GMC, 6V71, 210 HP
Oil Capacity: 24-26 U.S. quarts

TRANSMISSION: GMC, VH
Fluid Capacity: 27 U.S. quarts.



5700

Date Issued: 1-2-1985

(5700-5734)

MANUFACTURER: Flexible

MODEL: F2D6V-401-1

STATUS: Pending Disposal

SCRTD DATA

DELIVERY YEAR: 1961
NUMBER OWNED: 16 (12-31-84)
SEATING CAPACITY: 50

MODIFICATIONS: Coaches 5700-5704 were equipped with two speed axles for freeway operation (1962-1965), which were removed because of high maintenance costs.

NOTES & COMMENTARY: These were the first coaches purchased from Flexible Corporation.

MANUFACTURER'S DATA

LENGTH:	40'	WIDTH:	102"
HEIGHT:	116"	WEIGHT:	23,660 lbs.
WHEEL BASE:	23' 8"	FUEL CAPACITY:	95 U.S. Gallons
EXIT DOOR TYPE:	4-Leaf Folding w/Treadle Step	KNEELING:	No
WHEELCHAIR LIFT:	No	AIR CONDITIONING:	No
POWER STEERING:	No		

ENGINE: GMC, 6V71, 190 HP
Oil Capacity: 26-28 U.S. quarts.

TRANSMISSION: Dana-Spicer, 184
Fluid Capacity: 28 U.S. quarts.



5735

Date Issued: 1-2-1985

(5735-5749)

MANUFACTURER: Flexible

MODEL: F2D6V-401-1
STATUS: Pending Disposal

SCRTD DATA

DELIVERY YEAR: 1964 (To Memphis Transit Authority)
NUMBER OWNED: 7 (12-31-84)
SEATING CAPACITY: 53

MODIFICATIONS: None. One coach (#5735) was formerly a Flexible demonstrator for CTA.

NOTES & COMMENTARY: These coaches were acquired as used buses from Memphis Transit Authority, Tennessee in 1975.

MANUFACTURER'S DATA

LENGTH:	40'	WIDTH:	102"
HEIGHT:	122"	WEIGHT:	22,000 lbs.
WHEEL BASE:	23' 8"	FUEL CAPACITY:	95 U.S. Gallons
EXIT DOOR TYPE:	Push Type/ Spring Return	KNEELING:	No
WHEELCHAIR LIFT:	No	AIR CONDITIONING:	Yes (Independent)
		POWER STEERING:	No

ENGINE: GMC, 6V71, 195 HP
Oil Capacity: 26-28 U.S. quarts.

TRANSMISSION: Dana-Spicer, 184
Fluid Capacity: 28 U.S. quarts.



(5800-5899)

MANUFACTURER: Flexible/Twin Coach MODEL: F2D6V-401-1
STATUS: Pending Disposal

SCRTD DATA

DELIVERY YEAR: 1962/63
NUMBER OWNED: 65 (12-31-84)
SEATING CAPACITY: 50

MODIFICATIONS: None

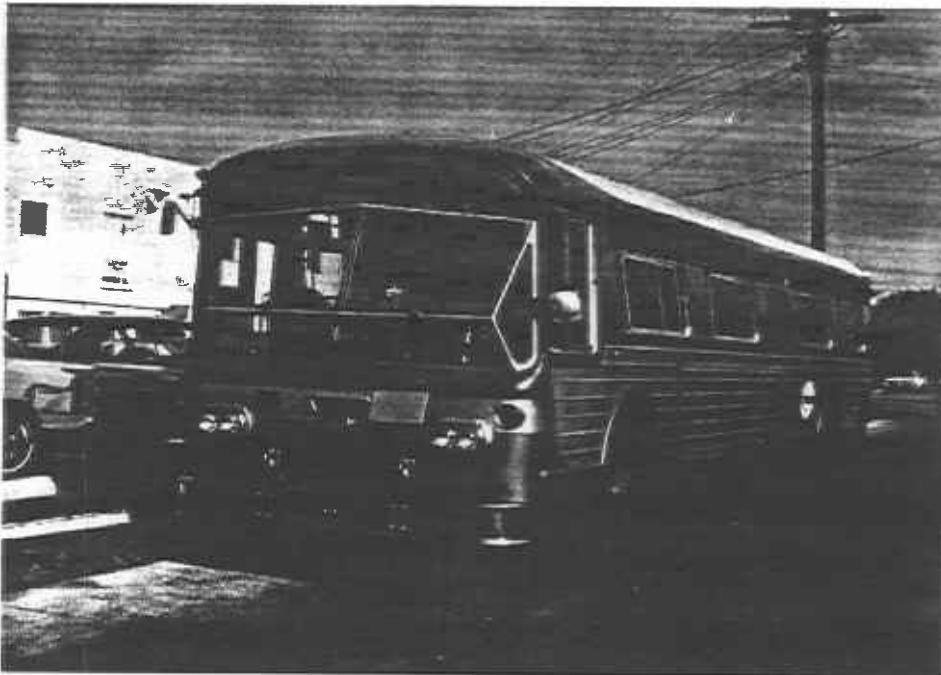
NOTES & COMMENTARY: Purchased by RTD predecessor agency MTA to replace streetcars and trolley coaches in March, 1963.

MANUFACTURER'S DATA

LENGTH:	40'	WIDTH:	102"
HEIGHT:	116"	WEIGHT:	22,000 lbs.
WHEEL BASE:	23' 9"	FUEL CAPACITY:	95 U.S. Gallons
EXIT DOOR TYPE:	4-Leaf Folding w/Treadle Step	KNEELING:	No
WHEELCHAIR LIFT:	No	AIR CONDITIONING:	No
POWER STEERING:	No		

ENGINE: GMC, 6V71, 195 HP
Oil Capacity: 26-28 U.S. quarts.

TRANSMISSION: Dana-Spicer, 184
Fluid Capacity: 28 U. S. quarts.



5900

Date Issued: 1-2-1985

(5900-5999)

MANUFACTURER: Flxible

MODEL: F2D6V-401-1

STATUS: Pending Disposal

SCRTD DATA

DELIVERY YEAR: 1963

NUMBER OWNED: 65 (12-31-84)

SEATING CAPACITY: 50

MODIFICATIONS: None. One Coach (#5999) used for test of Cummins #265-B V-8 diesel engine prior to being specified for #6000 series coaches in 1965.

NOTES & COMMENTARY: Purchased by RTD predecessor agency MTA to replace streetcars and trolley coaches in March, 1963.

MANUFACTURER'S DATA

LENGTH: 40'

WIDTH: 102"

HEIGHT: 116"

WEIGHT: 23,660 lbs.

WHEEL BASE: 23' 9"

FUEL CAPACITY: 95 U.S. Gallons

EXIT DOOR TYPE: Treadle Step

KNEELING: No

WHEELCHAIR LIFT: No

AIR CONDITIONING: No

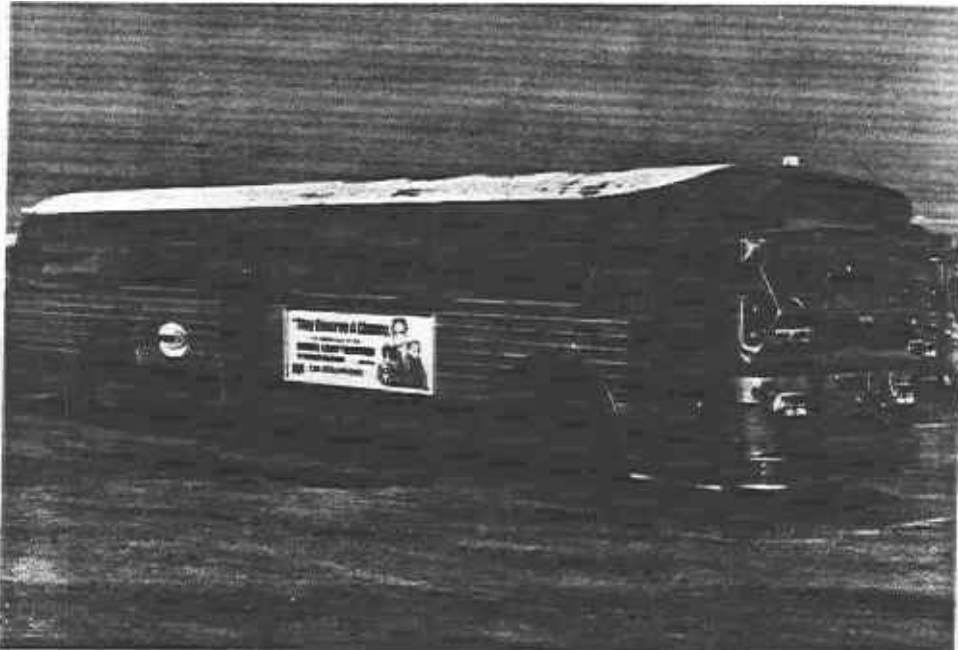
POWER STEERING: No

ENGINE: DDA (GMC), 6V71, 195 HP

Oil Capacity: 26-28 U.S. quarts.

TRANSMISSION: Dana-Spicer, 184

Fluid Capacity: 28 U.S. quarts.



6100

Date Issued: 1-2-1985

(6100-6274)

MANUFACTURER: Flexible

MODEL: 111-CC-D51

STATUS: Active

SCRTD DATA

DELIVERY YEAR: 1968
NUMBER OWNED: 173 (12-1-84)
SEATING CAPACITY: 51

MODIFICATIONS: None

NOTES & COMMENTARY: First 40-foot Flexible coach with A/C and touch bar type exit door. These coaches will be used for Reserve fleet only, but some will be sold.

MANUFACTURER'S DATA

LENGTH:	40'	WIDTH:	102"
HEIGHT:	122"	WEIGHT:	21,600 lbs.
WHEEL BASE:	23' 9"	FUEL CAPACITY:	95 U.S. Gallons
EXIT DOOR TYPE:	Push Type, Air Assist	KNEELING:	No
WHEELCHAIR LIFT:	No	AIR CONDITIONING:	Yes
POWER STEERING:	No		

ENGINE: DDA (GMC), 6V71, 195 HP
Oil Capacity: 28 U.S. quarts.

TRANSMISSION: DDA, VS2-6
Fluid Capacity: 28 U.S. quarts.



7000

Date Issued: 1-2-1985

(7000-7099)

MANUFACTURER: Flxible

MODEL: 111-CC-D61

STATUS: Active

SCRTD DATA

DELIVERY YEAR: 1970/71
NUMBER OWNED: 98 (12-1-84)
SEATING CAPACITY: 51

MODIFICATIONS: None

NOTES & COMMENTARY: None

MANUFACTURER'S DATA

LENGTH: 40'
HEIGHT: 124"
WHEEL BASE: 23' 9"
EXIT DOOR TYPE: Push Type
WHEELCHAIR LIFT: No
POWER STEERING: No

WIDTH: 102"
WEIGHT: 23,000 lbs.
FUEL CAPACITY: 95 U.S. Gallons
KNEELING: No
AIR CONDITIONING: Yes

ENGINE: DDA (GMC), 8V71, 280 HP
Oil Capacity: 34-36 U.S. quarts.

TRANSMISSION: DDA, VS2-8
Fluid Capacity: 26-32 U.S. quarts.



7100

Date Issued: 1-2-1985

(7100-7199)

MANUFACTURER: Flxible

MODEL: 111-CC-C31

STATUS: Pending Disposal

SCRTD DATA

DELIVERY YEAR: 1971

NUMBER OWNED: 98 (12-31-84)

SEATING CAPACITY: 51

MODIFICATIONS: The Perkins engine controls were modified for better A/C system operation. Several coaches in series retrofitted with Allison MT-644 automatic transmissions.

NOTES & COMMENTARY: District's first coaches equipped with Cummins V-8-903 engine and 24-volt electrical system.

MANUFACTURER'S DATA

LENGTH: 40'

WIDTH: 102"

HEIGHT: 122"

WEIGHT: 22,600 lbs.

WHEEL BASE: 23' 9"

FUEL CAPACITY: 95 U.S. Gallons

EXIT DOOR TYPE: Touch Bar,
Push Type

KNEELING: No

WHEELCHAIR LIFT: No

AIR CONDITIONING: Yes
(Independent)

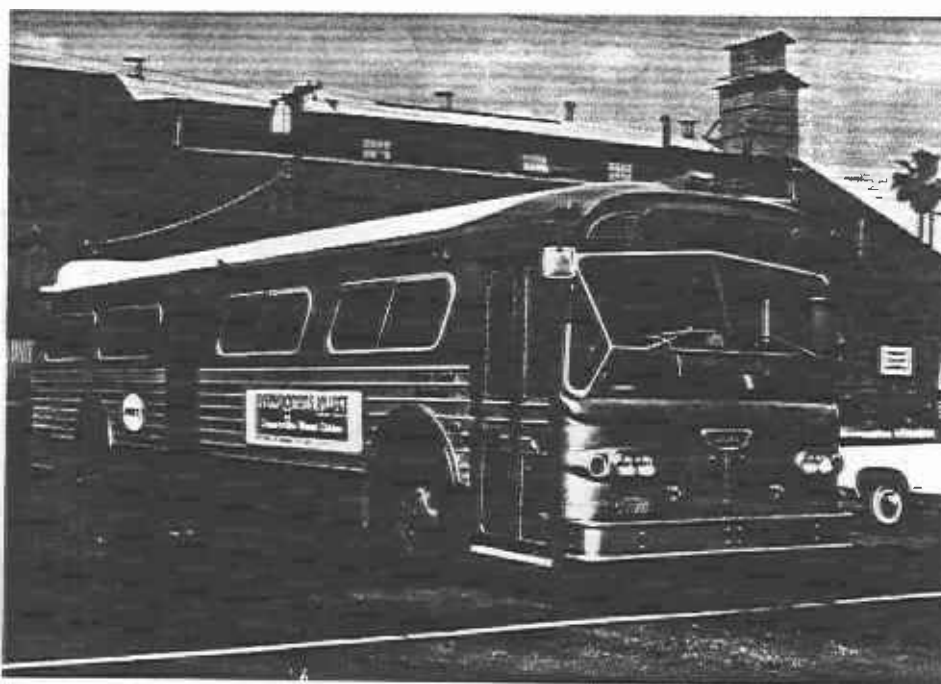
POWER STEERING: No

ENGINE: Cummins, V-8-903, 280-320 HP & 2600 RPM

Oil Capacity: 34-36 U.S. quarts.

TRANSMISSION: Dana-Spicer, 184-1-13

Fluid Capacity: 28 U.S. quarts.



7200

Date Issued: 1-2-1985

(7200-7276)

MANUFACTURER: Flxible

MODEL: 111-CC-DO61
STATUS: Active

SCRTD DATA

DELIVERY YEAR: 1973
NUMBER OWNED: 75 (12-1-84)
SEATING CAPACITY: 51

MODIFICATIONS: None

NOTES & COMMENTARY: None

MANUFACTURER'S DATA

LENGTH:	40'	WIDTH:	102"
HEIGHT:	122"	WEIGHT:	22,000 lbs.
WHEEL BASE:	23' 9"	FUEL CAPACITY:	95 U.S. Gallons
EXIT DOOR TYPE:	Push Type, Air Assist	KNEELING:	No
WHEELCHAIR LIFT:	No	AIR CONDITIONING:	Yes
POWER STEERING:	No		

ENGINE: DDA (GMC), 8V71, 280 HP
Oil Capacity: 32-33 U.S. quarts.

TRANSMISSION: DDA, VS2-8
Fluid Capacity: 28-32 U.S. quarts.



7200

Date Issued: 1-2-1985

(7200-7276)

MANUFACTURER: Flxible

MODEL: 111-CC-DO61

STATUS: Active

SCRTD DATA

DELIVERY YEAR: 1973
NUMBER OWNED: 75 (12-1-84)
SEATING CAPACITY: 51

MODIFICATIONS: None

NOTES & COMMENTARY: None

MANUFACTURER'S DATA

LENGTH:	40'	WIDTH:	102"
HEIGHT:	122"	WEIGHT:	22,000 lbs.
WHEEL BASE:	23' 9"	FUEL CAPACITY:	95 U.S. Gallons
EXIT DOOR TYPE:	Push Type, Air Assist	KNEELING:	No
WHEELCHAIR LIFT:	No	AIR CONDITIONING:	Yes
POWER STEERING:	No		

ENGINE: DDA (GMC), 8V71, 280 HP
Oil Capacity: 32-33 U.S. quarts.

TRANSMISSION: DDA, VS2-8
Fluid Capacity: 28-32 U.S. quarts.



7300

Date Issued: 1-2-1985

(7300-7399)

MANUFACTURER: Flexible

MODEL: 53102-8-1

STATUS: Active

SCRTD DATA

DELIVERY YEAR: 1975

NUMBER OWNED: 98 (12-1-84)

SEATING CAPACITY: 47

MODIFICATIONS: Eight coaches retrofitted with Thermo King 426 A/C compressor.

NOTES & COMMENTARY: First Flexible coaches without slide open passenger windows. Equipped with a more spacious seating configuration for suburban service.

MANUFACTURER'S DATA

LENGTH: 40'

WIDTH: 102"

HEIGHT: 124"

WEIGHT: 22,500 lbs.

WHEEL BASE: 23' 9"

FUEL CAPACITY: 125 U.S. Gallons

EXIT DOOR TYPE: Push Type,
Air Assist

KNEELING: No

WHEELCHAIR LIFT: No

AIR CONDITIONING: Yes

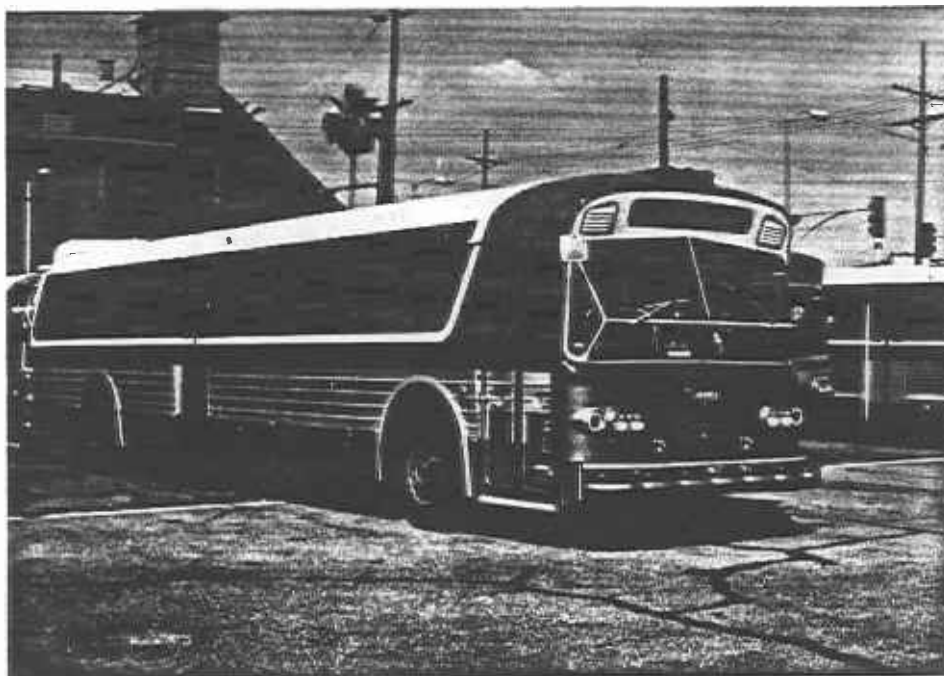
POWER STEERING: No

ENGINE: DDA (GMC), 8V71, 280 HP

Oil Capacity: 34-36 U.S. quarts

TRANSMISSION: DDA, VS2-8

Fluid Capacity: 26-32 U.S. quarts.



7400

Date Issued: 1-2-1985

(7400-7499)

MANUFACTURER: Flxible (Rohr/Flxible)

MODEL: 53102-8-1

STATUS: Active

SCRTD DATA

DELIVERY YEAR: 1975
NUMBER OWNED: 99 (12-31-84)
SEATING CAPACITY: 51

MODIFICATIONS: #7485-7499 retrofitted with DDA V-730 transmission in 1982.

NOTES & COMMENTARY: None

MANUFACTURER'S DATA

LENGTH:	40'	WIDTH:	102"
HEIGHT:	124"	WEIGHT:	23,000 lbs.
WHEEL BASE:	23' 9"	FUEL CAPACITY:	125 U.S. Gallons
EXIT DOOR TYPE:	Push Type, Air Assist	KNEELING:	No
WHEELCHAIR LIFT:	No	AIR CONDITIONING:	Yes
POWER STEERING:	No		

ENGINE: DDA (GMC), 8V71, 260 HP
Oil Capacity: 34-36 U.S. quarts.

TRANSMISSION: DDA, VS2-8
Fluid Capacity: 28-32 U.S. quarts.

#7485-7499: DDA V-730D
Fluid Capacity: 34-36 U.S. quarts.



7500

Date Issued: 1-2-1985

(7500-7729)

MANUFACTURER: Grumman Flexible
NAME: 870

MODEL: 53102-8V-1
STATUS: Active

SCRTD DATA

DELIVERY YEAR: 1980
NUMBER OWNED: 230 (12-31-84)
SEATING CAPACITY: 46

MODIFICATIONS: Engine change in 1983-84 from 8V71 TAC to 6V92 TAC to eliminate engine gear train difficulty. Thermo King #426X compressors were installed to replace original equipment. Stock radiator replaced with larger capacity unit as part of engine change campaign.

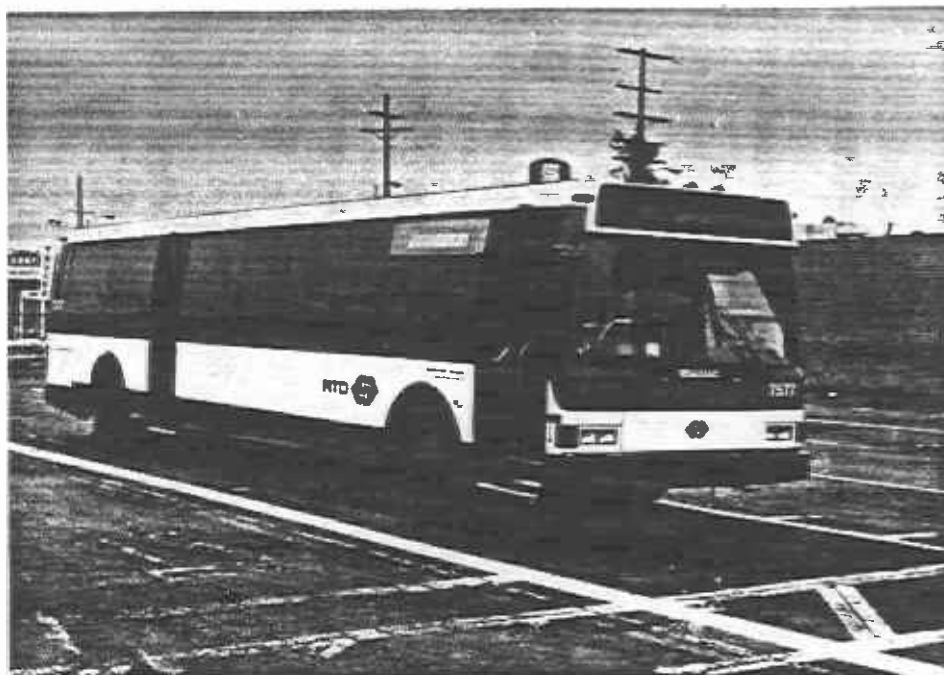
NOTES & COMMENTARY: First Advance Design Buses (ADB) for RTD. First buses in fleet equipped with electronic destination signs (Luminator).

MANUFACTURER'S DATA

LENGTH:	40'	WIDTH:	102"
HEIGHT:	118"	WEIGHT:	25,860 lbs.
WHEEL BASE:	23' 9"	FUEL CAPACITY:	135 U.S. Gallons
EXIT DOOR TYPE:	Push Type, Air Assist	KNEELING:	Yes
WHEELCHAIR LIFT:	EEC in front door	AIR CONDITIONING:	Yes
POWER STEERING:	Yes		

ENGINE: DDA, 6V92 TAC, 270 HP
Oil Capacity: 25-27 U.S. quarts.

TRANSMISSION: DDA, V-730D
Fluid Capacity: 22-30 U.S. quarts.



8000

Date Issued: 1-2-1985

(8000-8199)

MANUFACTURER: AM General
NAME: Metropolitan

MODEL: 10240B-8
STATUS: Active

SCRTD DATA

DELIVERY YEAR: 1977
NUMBER OWNED: 200 (12-31-84)
SEATING CAPACITY: 47

MODIFICATIONS: Air assist power steering installed 1979-80. Air conditioning condensers moved from radiator area to rear window area. A/C compressors changed from Trane Model "G" to Thermo King #426X.

NOTES & COMMENTARY: First District coaches to have wheelchair lift and kneeling ability. First coaches equipped with DDA V730D transmission.

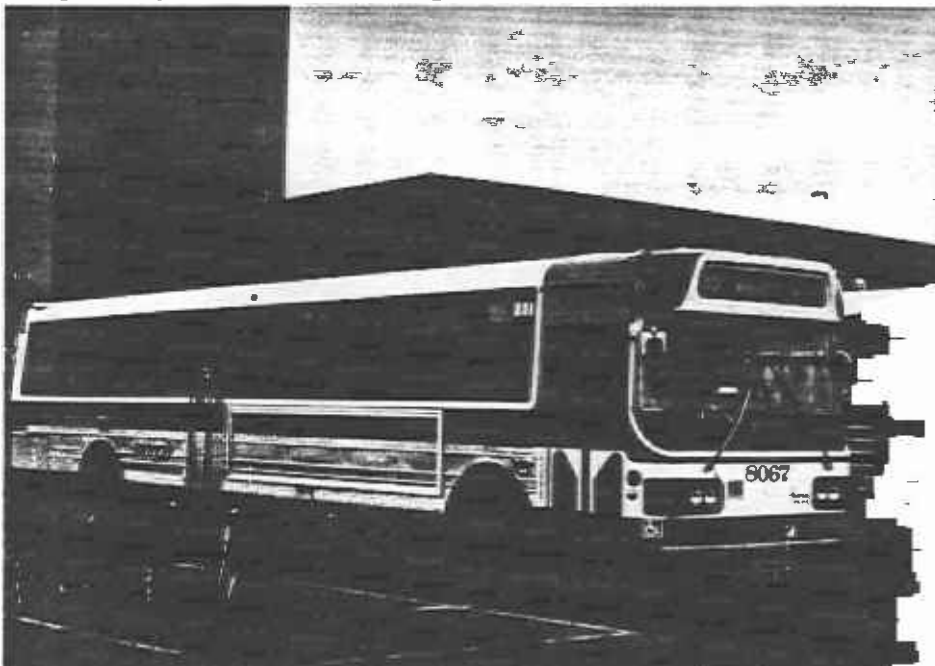
#8111 & #8113 tested Cummins type V-903 diesel engine.
#8112 tested DDA type 6V-92 diesel engine.
#8195-8199 equipped with "Telma" electric retarder units. Since removed.
#8000-8032 equipped with AVM device. Special line assignment.

MANUFACTURER'S DATA

LENGTH:	40'	WIDTH:	102"
HEIGHT:	124"	WEIGHT:	27,500 lbs.
WHEEL BASE:	23' 9"	FUEL CAPACITY:	125 U.S. Gallons
EXIT DOOR TYPE:	Push Type, Air Assist	KNEELING:	Yes
WHEELCHAIR LIFT:	TD&T in Front Door	AIR CONDITIONING:	Yes
POWER STEERING:	Air Power Assist		

ENGINE: DDA (GMC), 8V-71, 280-310 HP
Oil Capacity: 34-36 U.S. quarts.

TRANSMISSION: DDA, V-730D
Fluid Capacity: 28-32 U.S. quarts.



8200

Date Issued: 1-2-1985

(8200-9139)

MANUFACTURER: GMC
NAME: RTS II-04

MODEL: T80-204
STATUS: Active

SCRTD DATA

DELIVERY YEAR: 1981
NUMBER OWNED: 939 (12-1-84)
SEATING CAPACITY: 43

MODIFICATIONS: Removed time delay from exit door because doors were too slow in closing. Steel fuel tanks being installed in place of plastic tanks.

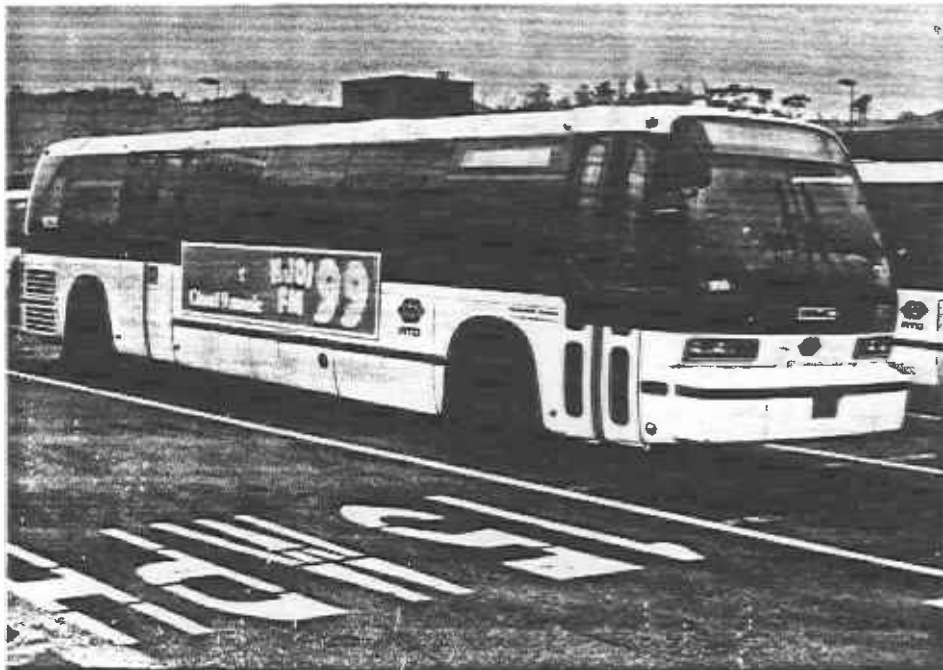
NOTES & COMMENTARY: District's first RTS II buses with rear door wheelchair lift system. 5 coaches were used for testing U.E.C. (Universal Electronic Control) transmission units (Coaches 8860, 8862, 8864, 8866, 8868).

MANUFACTURER'S DATA

LENGTH:	40'	WIDTH:	102"
HEIGHT:	119"	WEIGHT:	26,600 lbs.
WHEEL BASE:	24' 10"	FUEL CAPACITY:	125 U.S. Gallons*
EXIT DOOR TYPE:	Push Type, Air Assist Pantograph	KNEELING:	Yes
WHEELCHAIR LIFT:	GMC at Rear Door	AIR CONDITIONING:	Yes
POWER STEERING:	Yes	*165 U.S. Gallon Steel Tank	

ENGINE: DDA (GMC), 6V92-TAC, 270 HP
Oil Capacity: 25 U.S. quarts.

TRANSMISSION: DDA, V-730D
Fluid Capacity: 34-36 U.S. quarts.



9200

Date Issued: 1-2-1985

(9200-9229)

MANUFACTURER: AMG/M.A.N.
NAME: Articulated

MODEL: SG220-18-3A
STATUS: Active

SCRTD DATA

DELIVERY YEAR: 1978
NUMBER OWNED: 30 (12-1-84)
SEATING CAPACITY: 65

MODIFICATIONS: A/C wiring system simplified so unit is operable only when engine is running. #9200-9217 equipped with AVM device.

NOTES & COMMENTARY: First articulated buses purchased by RTD as part of California Articulated Bus Consortium.

MANUFACTURER'S DATA

LENGTH:	60'	WIDTH:	101"
HEIGHT:	117"	WEIGHT:	38,330 lbs.
WHEEL BASE:	Tractor 18' 6" Trailer 17' 8"	FUEL CAPACITY:	125 U.S. Gallons
EXIT DOOR TYPE	Push Type, Air Assist	KNEELING:	No
WHEELCHAIR LIFT:	No	AIR CONDITIONING:	Yes
POWER STEERING:	Yes		

ENGINE: M.A.N., D2566 MTUM, 276 HP
Oil Capacity: 24-26 U.S. quarts.

TRANSMISSION: RENK, Doromat 874A
Fluid Capacity: 21 U.S. quarts.



9250

Date Issued: 1-2-1985

(9250-9259)

MANUFACTURER: AMG/M.A.N.
NAME: Articulated

MODEL: SG220-18-2A
STATUS: Active

SCRTD DATA

DELIVERY YEAR: 1978 (To Golden Gate Transit)
NUMBER OWNED: 10 (12-1-84)
SEATING CAPACITY: 67

MODIFICATIONS: A/C wiring system simplified so unit is operable only when engine is running.

NOTES & COMMENTARY: Ten used buses (9250 to 9259) purchased from Golden Gate Transit in 1983. Equipped with rear door EEC wheelchair lift system. Placed in District service: January, 1984. Purchased as part of California Articulated Bus Consortium.

MANUFACTURER'S DATA

LENGTH:	60'	WIDTH:	101"
HEIGHT:	117"	WEIGHT:	38,830 lbs.
WHEEL BASE:	Tractor 18' 6" Trailer 17' 8"	FUEL CAPACITY:	125 U.S. Gallons
EXIT DOOR TYPE:	Push Type, Air Assist	KNEELING:	No
WHEELCHAIR LIFT:	Yes (EEC in Rear Door)	AIR CONDITIONING:	Yes
POWER STEERING:	Yes		

ENGINE: M.A.N., D2566 MTUM, 276 HP
Oil Capacity: 24-26 U.S. quarts.

TRANSMISSION: RENK, Doromat 874A
Fluid Capacity: 21 U.S. quarts.



