

**SOUTHERN CALIFORNIA
RAPID TRANSIT DISTRICT**

**ORGANIZATION
CHARTS**

**DECEMBER
1986**



SOUTHERN CALIFORNIA RAPID TRANSIT DISTRICT

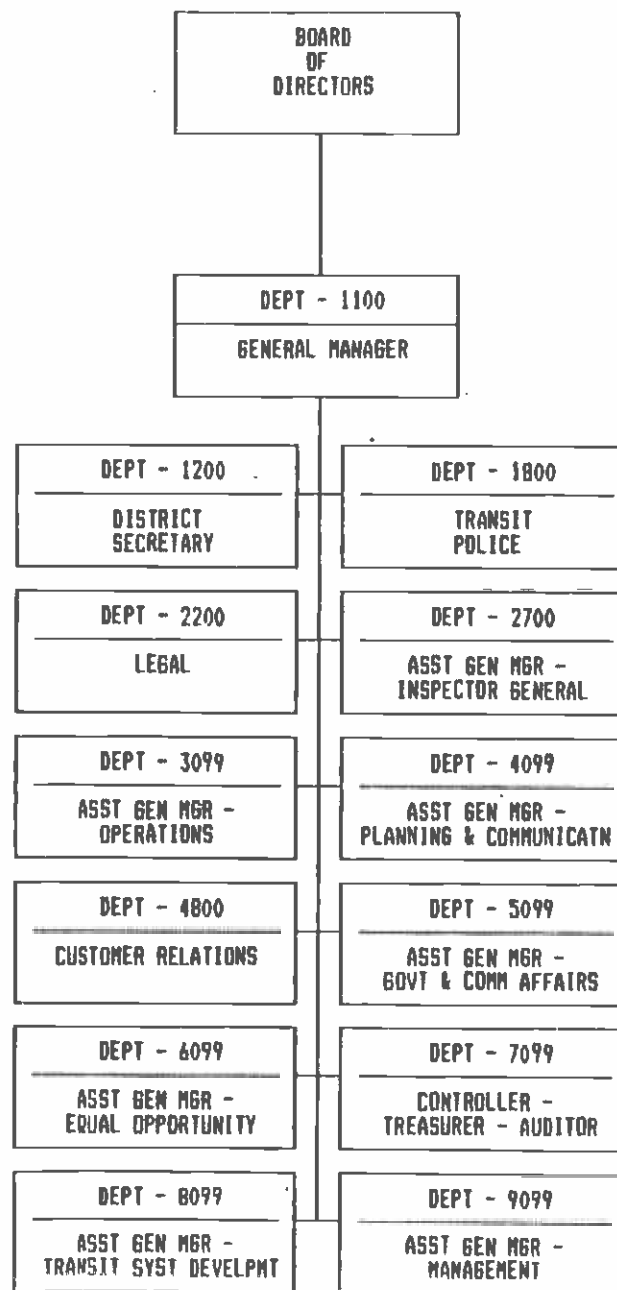
ORGANIZATION CHARTS

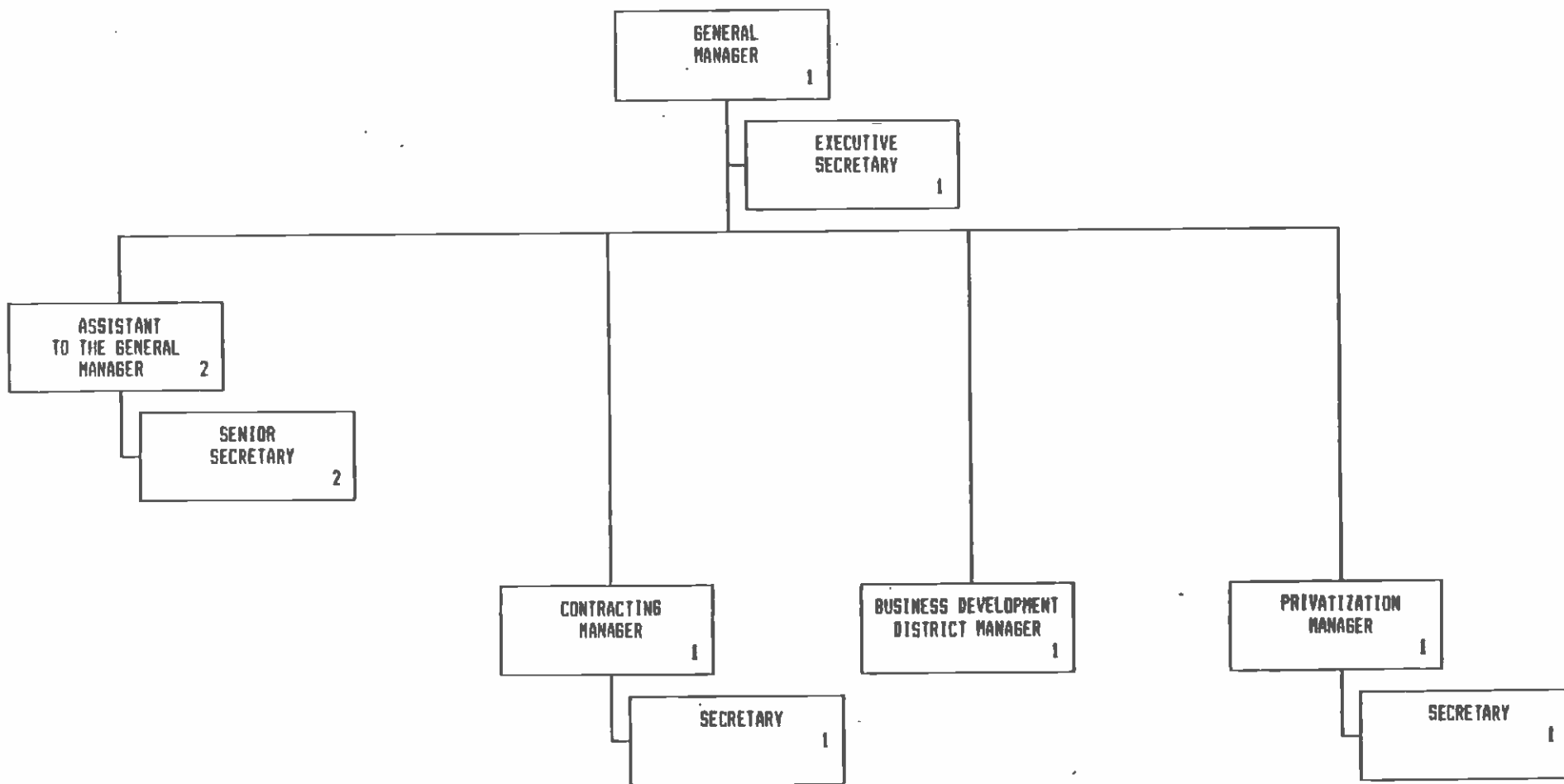
TABLE OF CONTENTS

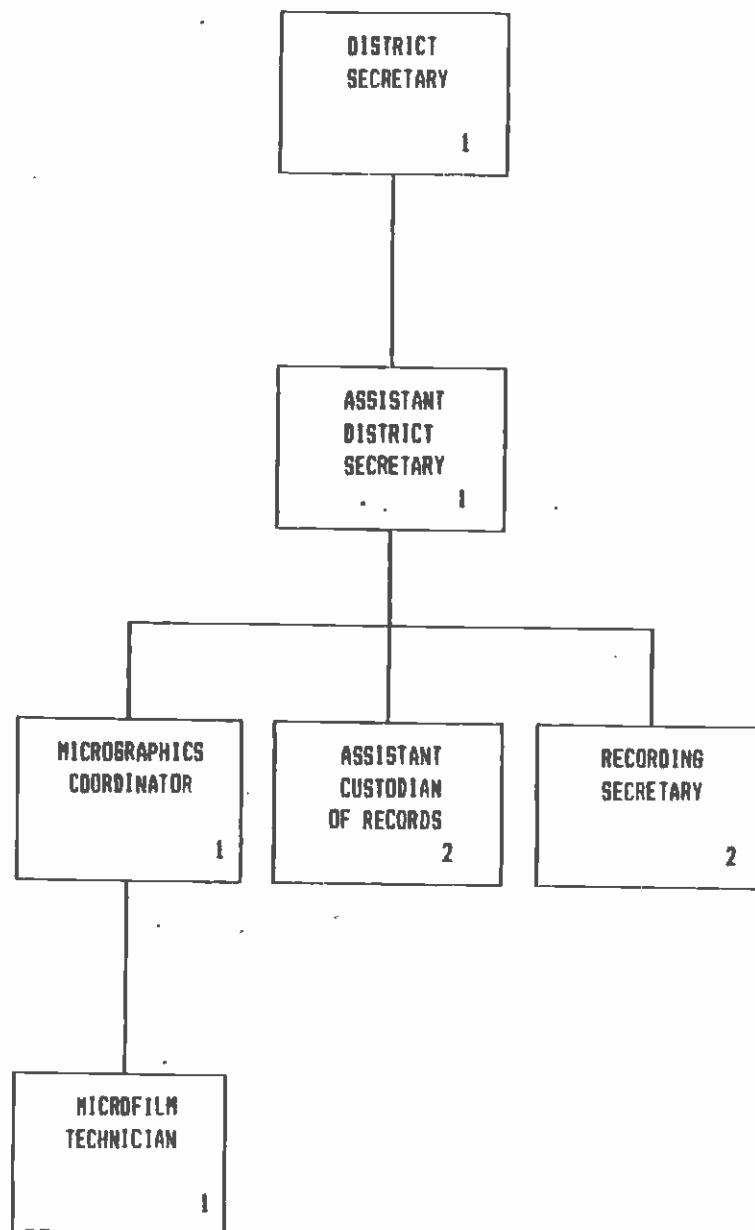
1000	BOARD OF DIRECTORS/OVERALL DISTRICT	1
1100	GENERAL MANGER	2
1200	DISTRICT SECRETARY	3
1800	TRANSIT POLICE	4
2200	LEGAL	5
2700	ASSISTANT GENERAL MANAGER -- INSPECTOR GENERAL	6
3099	ASSISTANT GENERAL MANAGER -- OPERATIONS	7
3200	TRANSPORTATION - OVERVIEW AND 3299	8
3250	TRANSPORTATION OPERATING DIVISIONS	9
3291	STOPS AND ZONES	10
3296	OPERATIONS CONTROL AND SERVICES	11
3297	TRANSPORTATION INSTRUCTION	12
3300	EQUIPMENT MAINTENANCE - OVERVIEW	13
3301-18	MAINTENANCE OPERATING DIVISIONS	14
3314	CENTRAL MAINTENANCE	15
3398	EQUIPMENT ENGINEERING	16
3399	MAINTENANCE GENERAL	17-18
3500	FACILITIES MAINTENANCE AND OPERATIONS - OVERVIEW	19
3510	GENERAL SERVICES	20
3540	PRINT SHOP	21
3599	FACILITIES MAINTENANCE	22-24
3900	SCHEDULING	25
4099	ASSISTANT GENERAL MANAGER -- PLANNING AND COMMUNICATIONS	26
4200	PLANNING	27
4400	MARKETING AND COMMUNICATIONS	28
4500	OFFICE OF POLICY ANALYSIS	29
4800	CUSTOMER RELATIONS	30

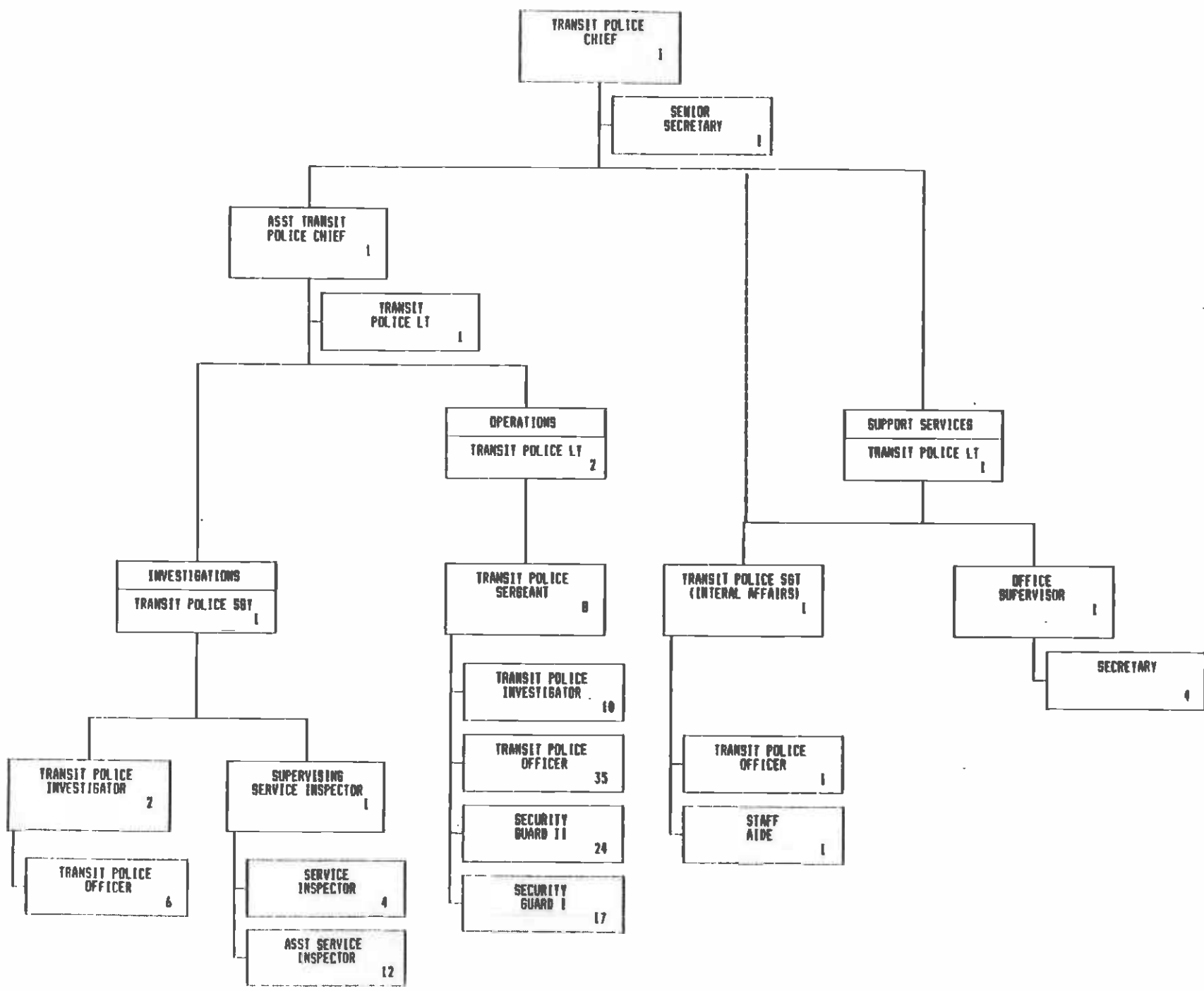
TABLE OF CONTENTS (CONTINUED)

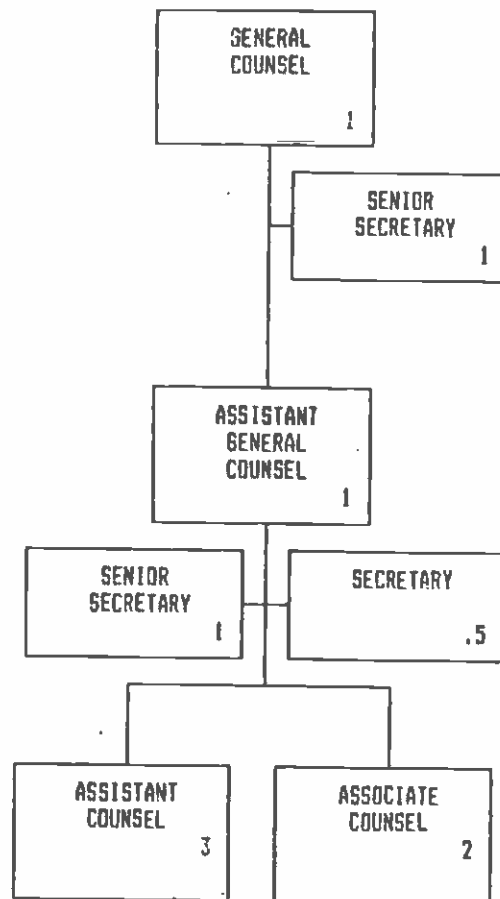
5099	ASSISTANT GENERAL MANAGER -- GOVERNMENT AND COMMUNITY AFFAIRS	31
5100	GOVERNMENT AFFAIRS	32
5500	LOCAL GOVERNMENT AND COMMUNITY AFFAIRS	33
6099	ASSISTANT GENERAL MANAGER -- EQUAL OPPORTUNITY	34
6100	OFFICE OF EQUAL EMPLOYMENT OPPORTUNITY	35
6200	OFFICE OF CONTRACT COMPLIANCE	36
6300	EMPLOYEE EDUCATION, TRAINING AND DEVELOPMENT	37
6400	OFFICE OF DISADVANTAGED BUSINESS ENTERPRISE/ WOMEN'S BUSINESS ENTERPRISE	38
7099	CONTROLLER/TREASURER/AUDITOR	39
7100	ACCOUNTING AND FISCAL	40-41
7200	DATA PROCESSING	42-45
8099	ASSISTANT GENERAL MANAGER -- TRANSIT SYSTEMS DEVELOPMENT	46
8100	TRANSIT SYSTEMS DEVELOPMENT	47-52
8300	BUS FACILITIES	53
9099	ASSISTANT GENERAL MANAGER -- MANAGEMENT	54
9100	RISK MANAGEMENT	55
9400	OFFICE OF CONTRACTS, PROCUREMENT & MATERIEL	56-57
9500	PERSONNEL	58
9700	OFFICE OF MANAGEMENT AND BUDGET	59
9800	EMPLOYEE RELATIONS	60

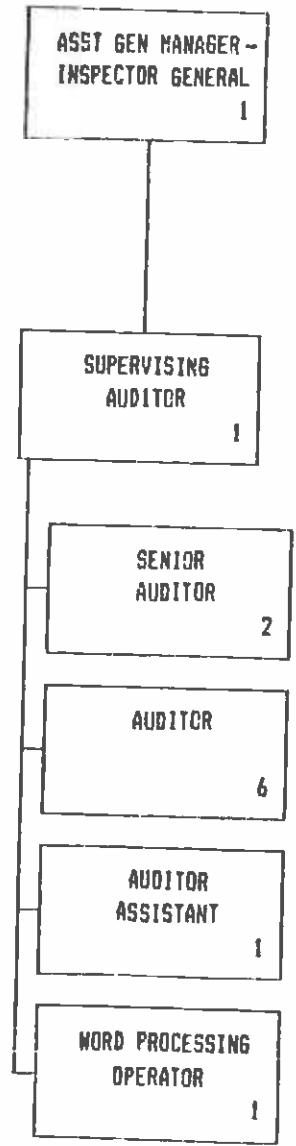


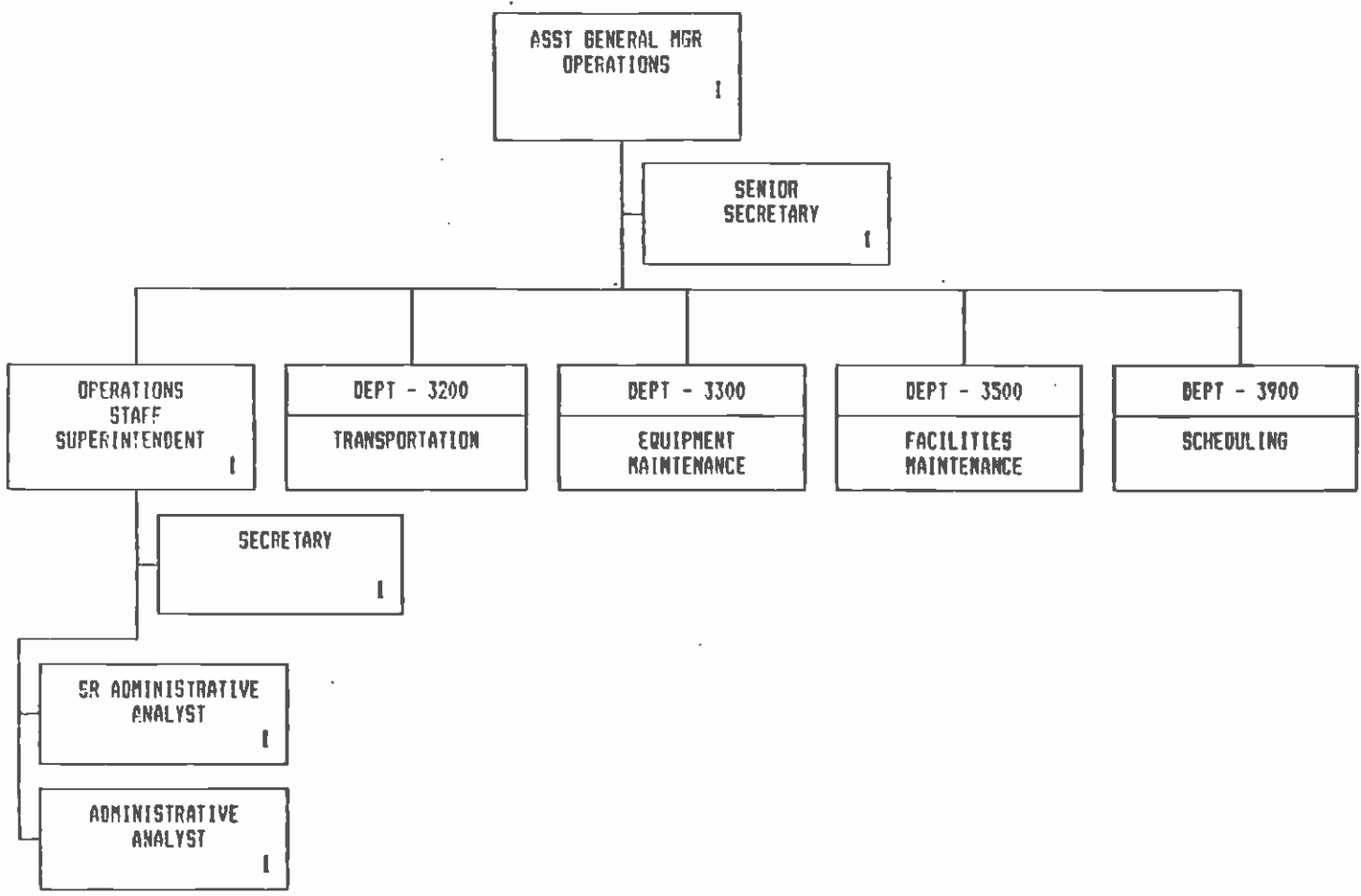


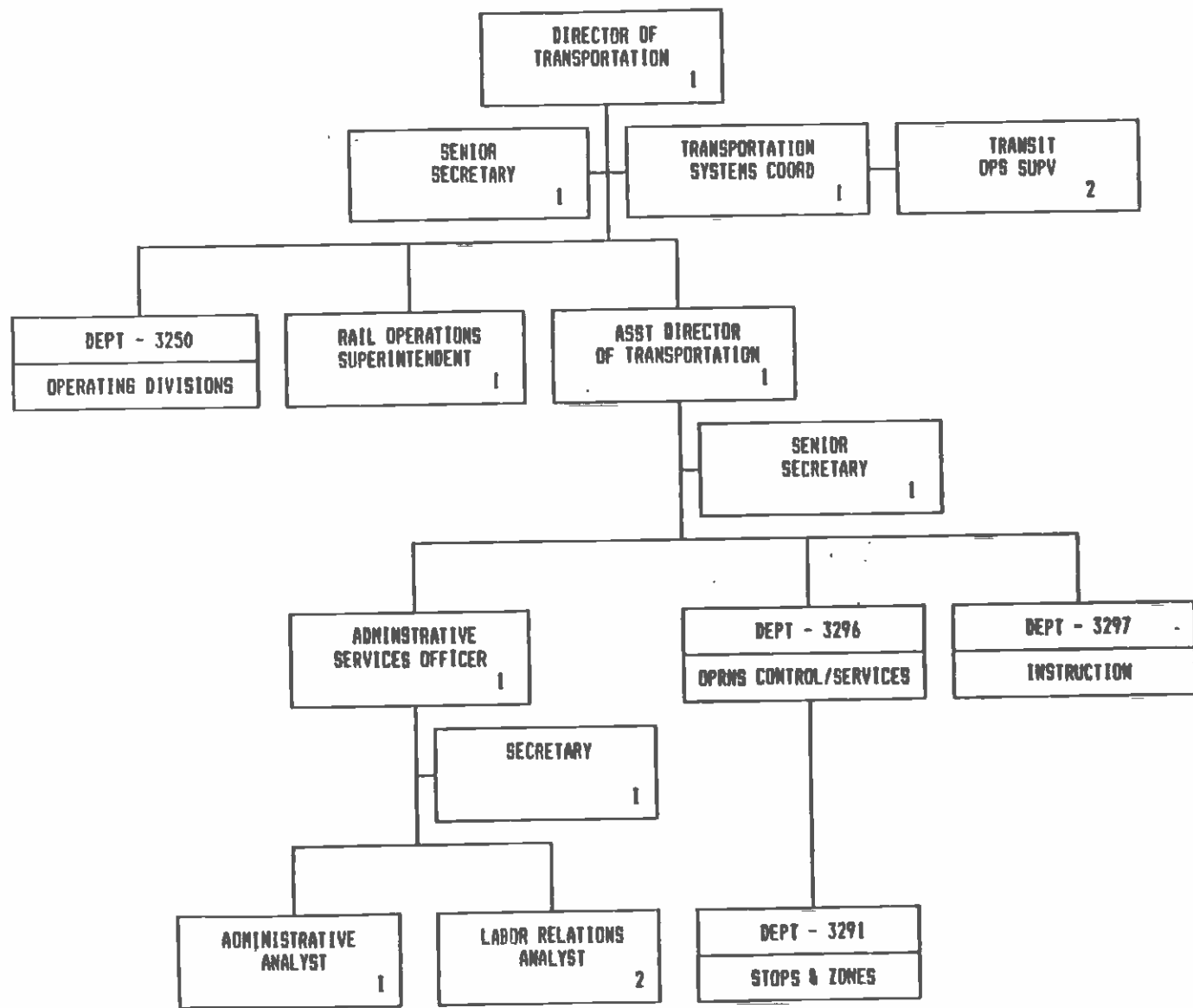


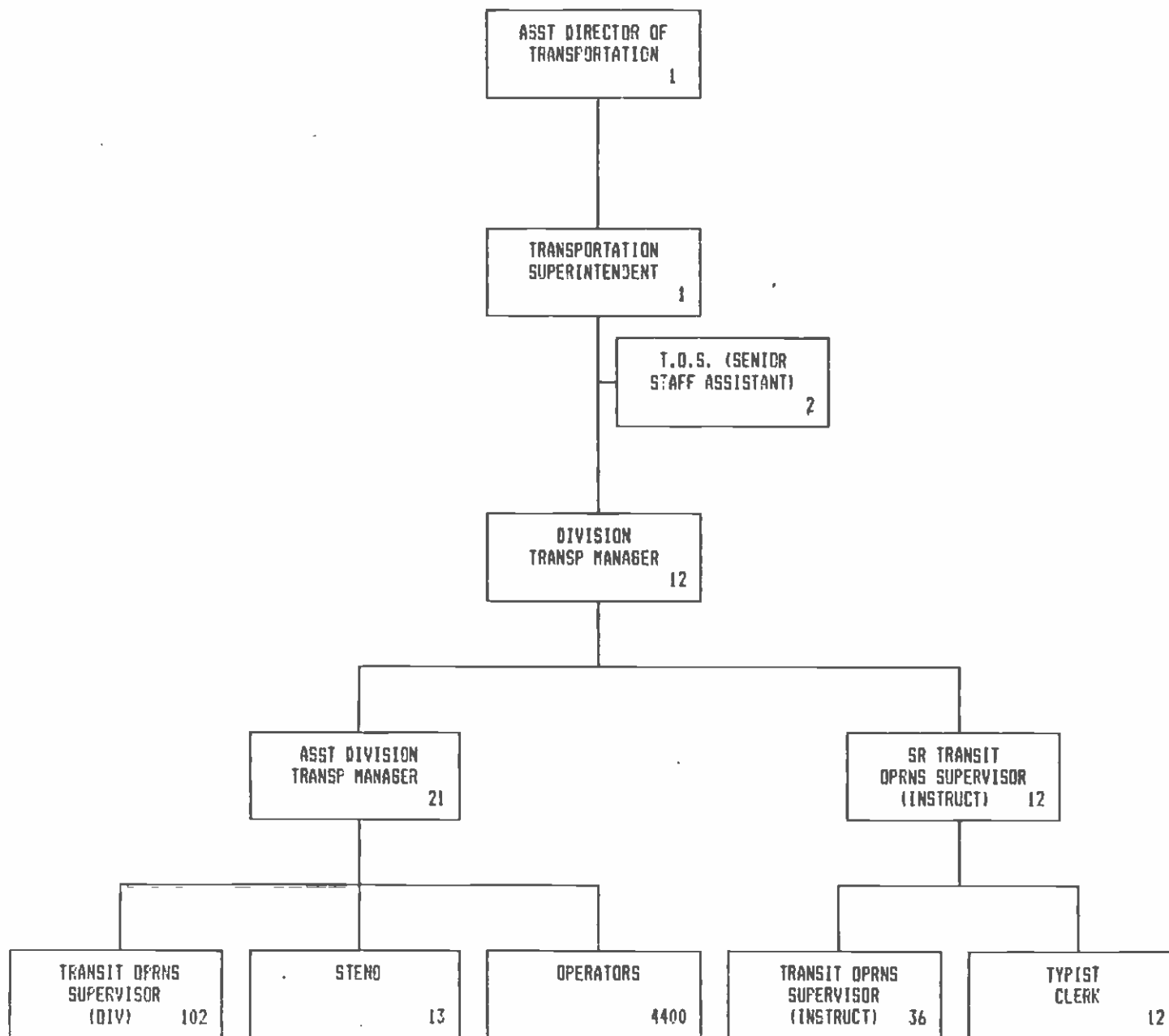


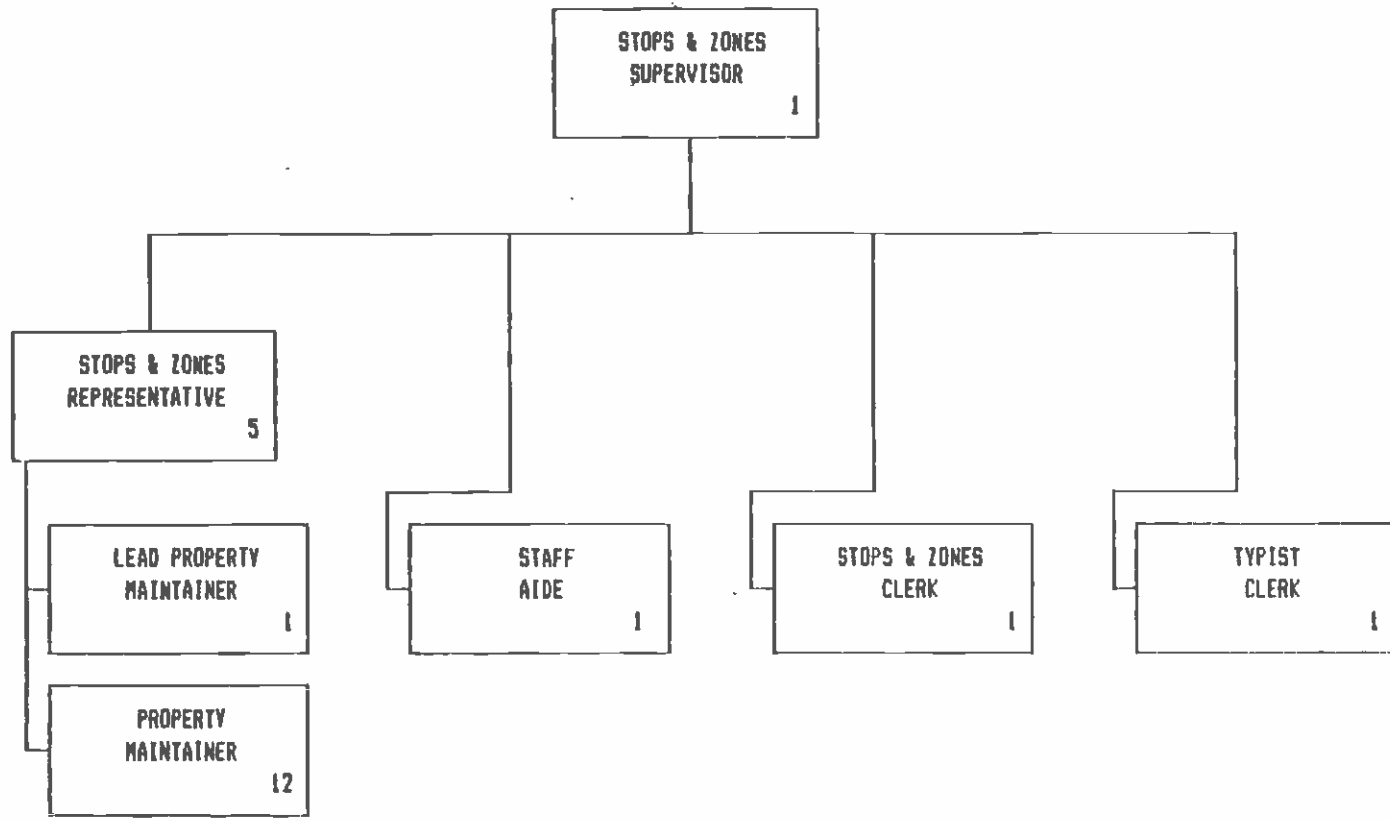


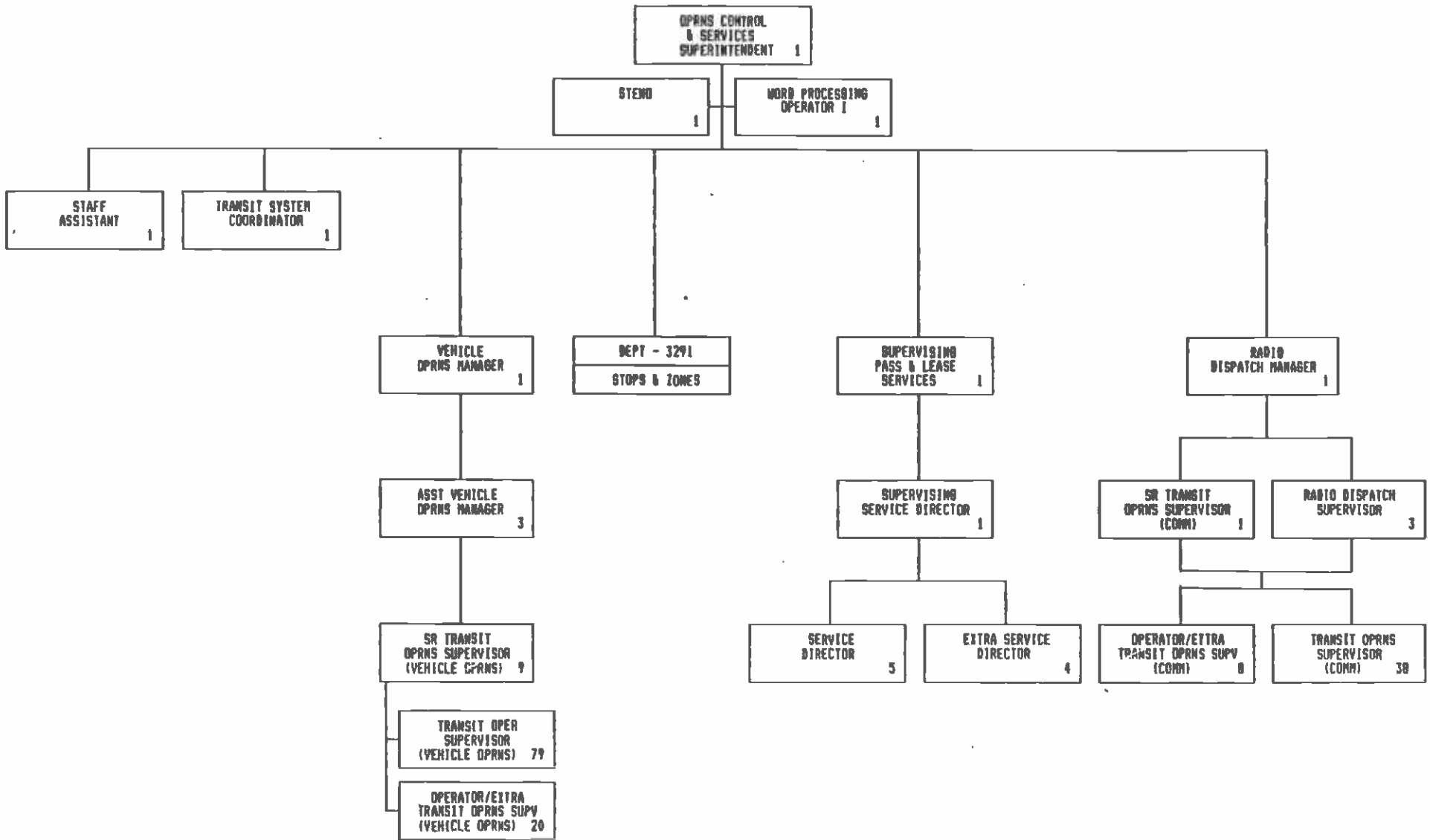


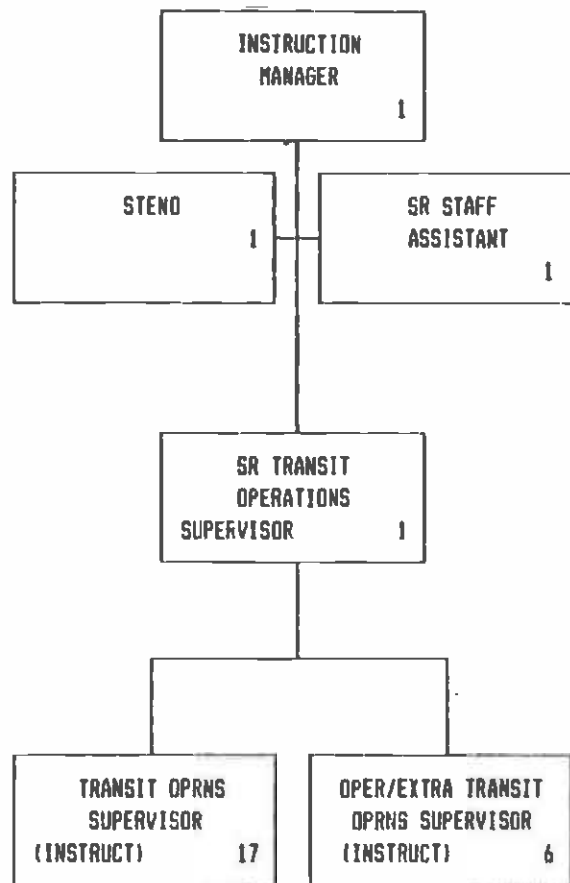


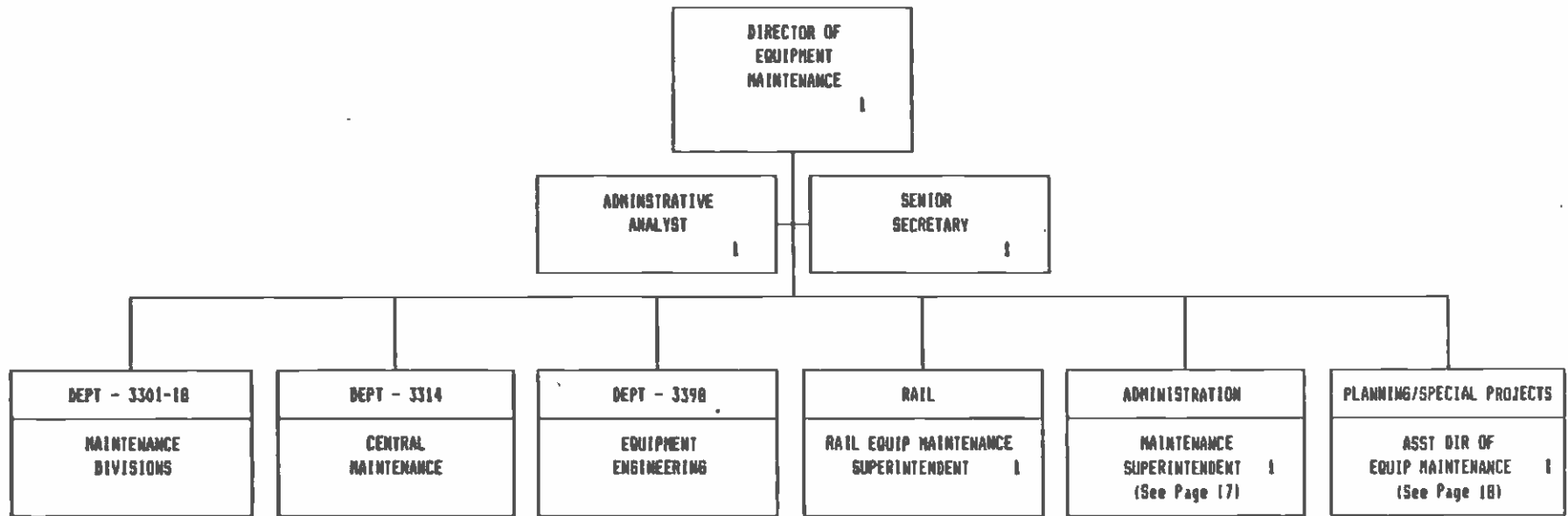


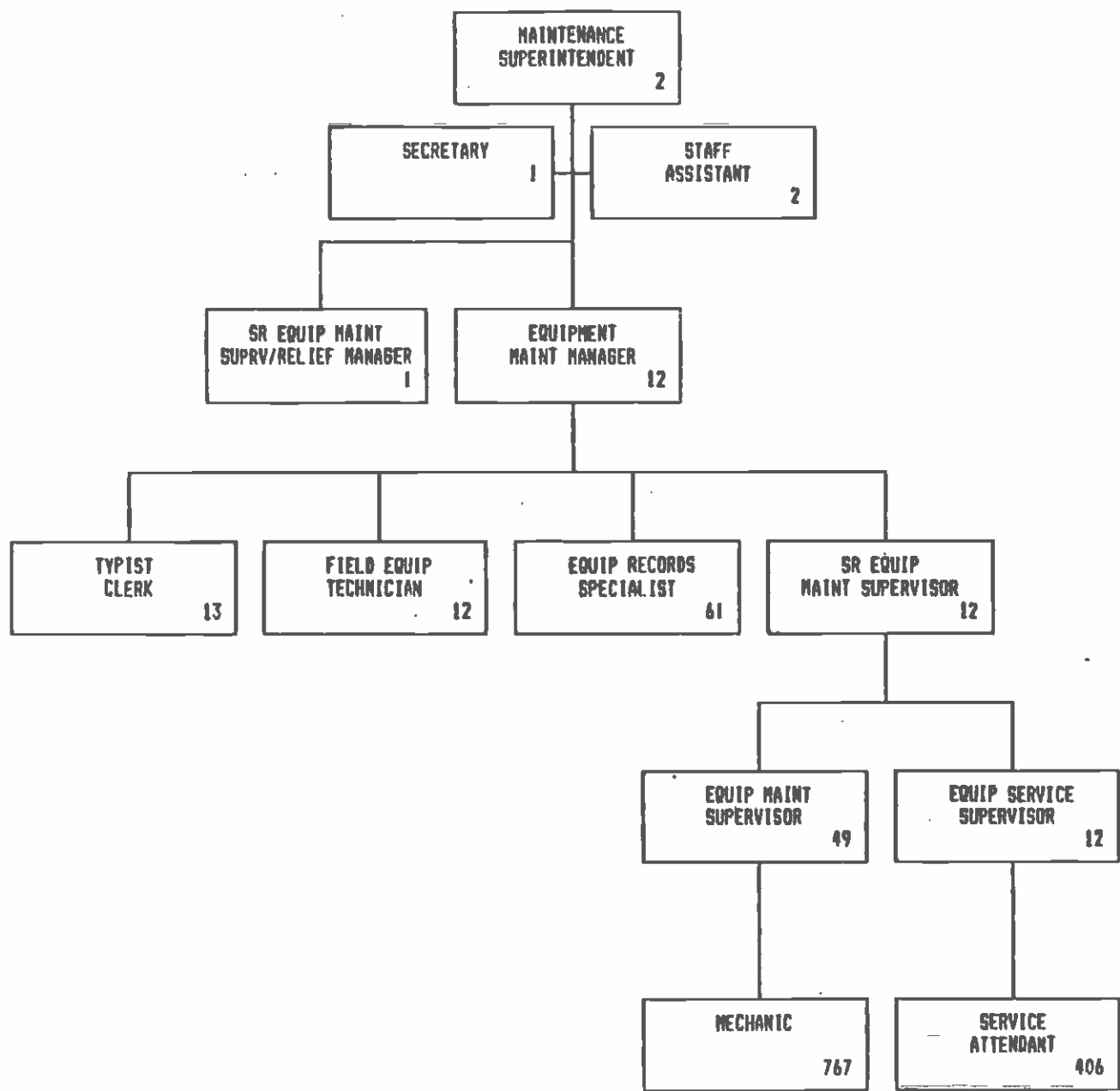


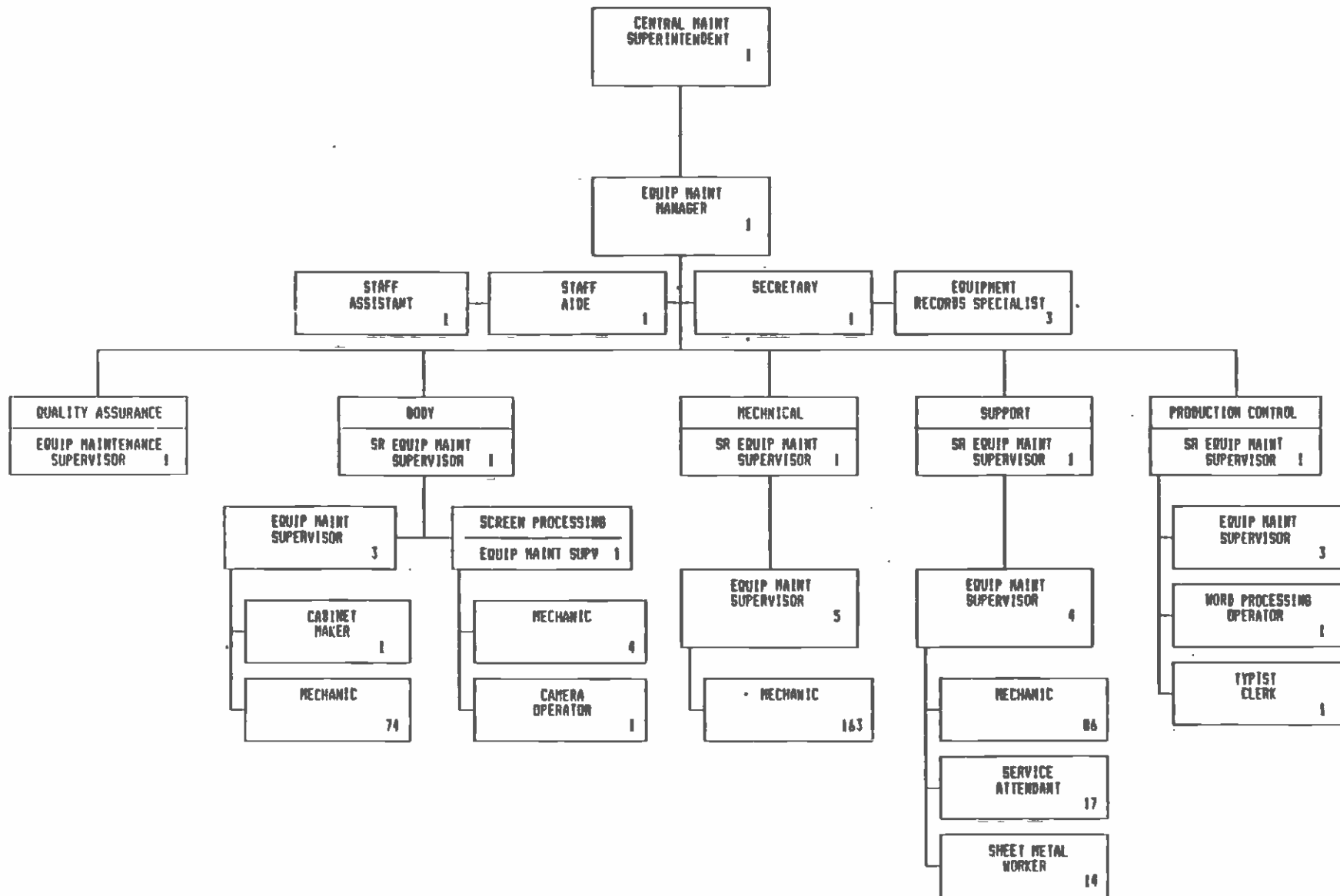


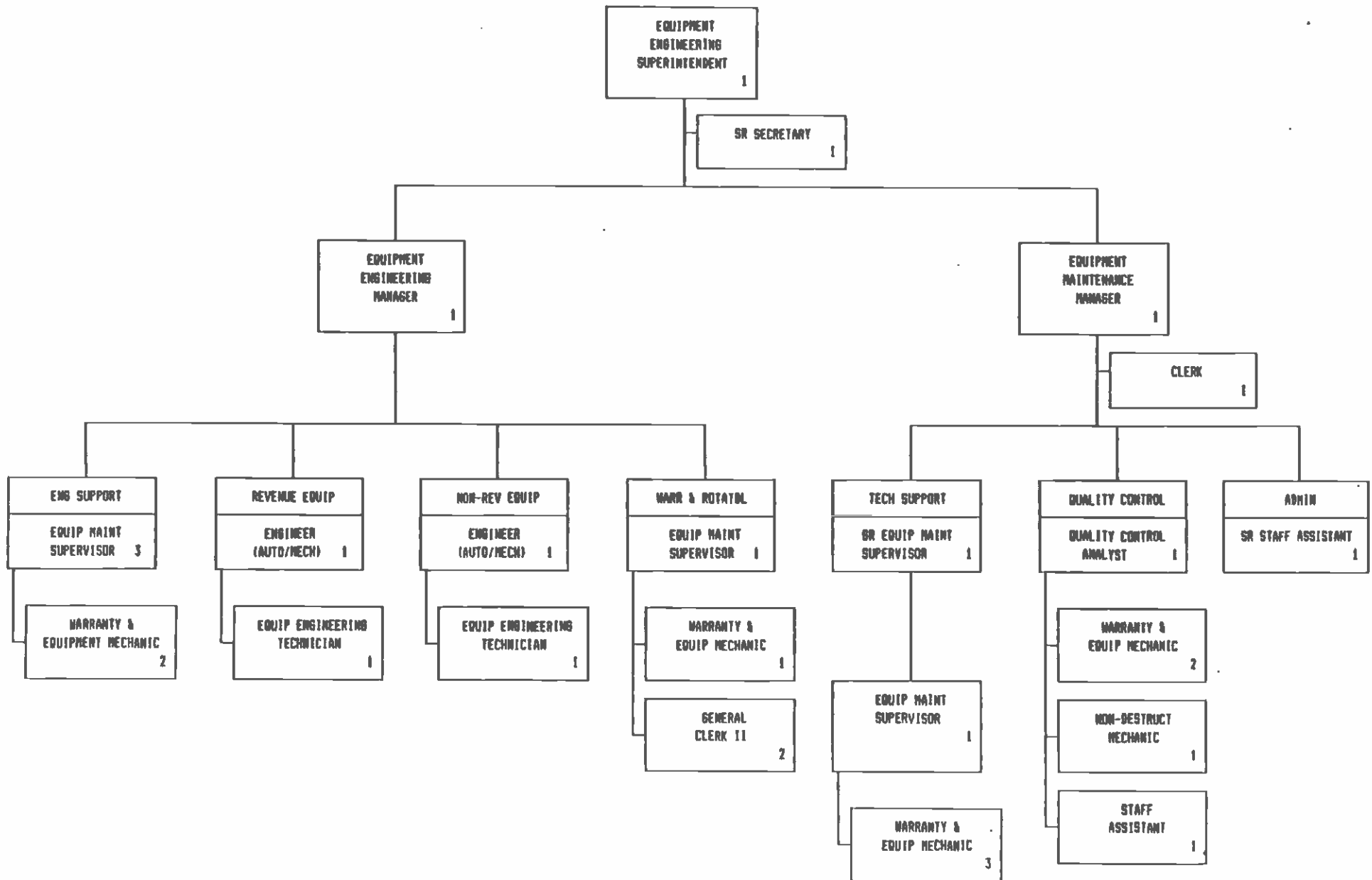


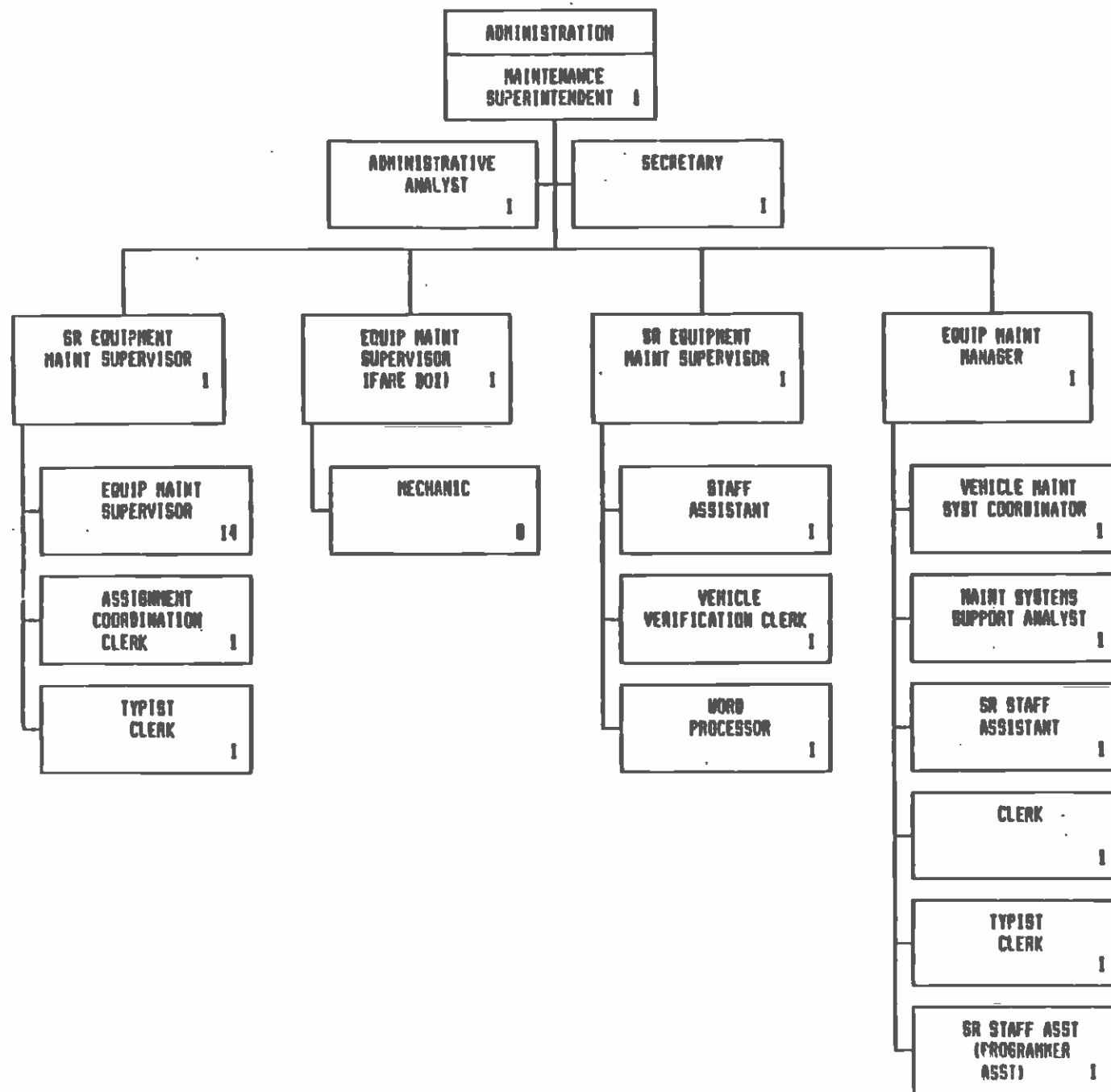


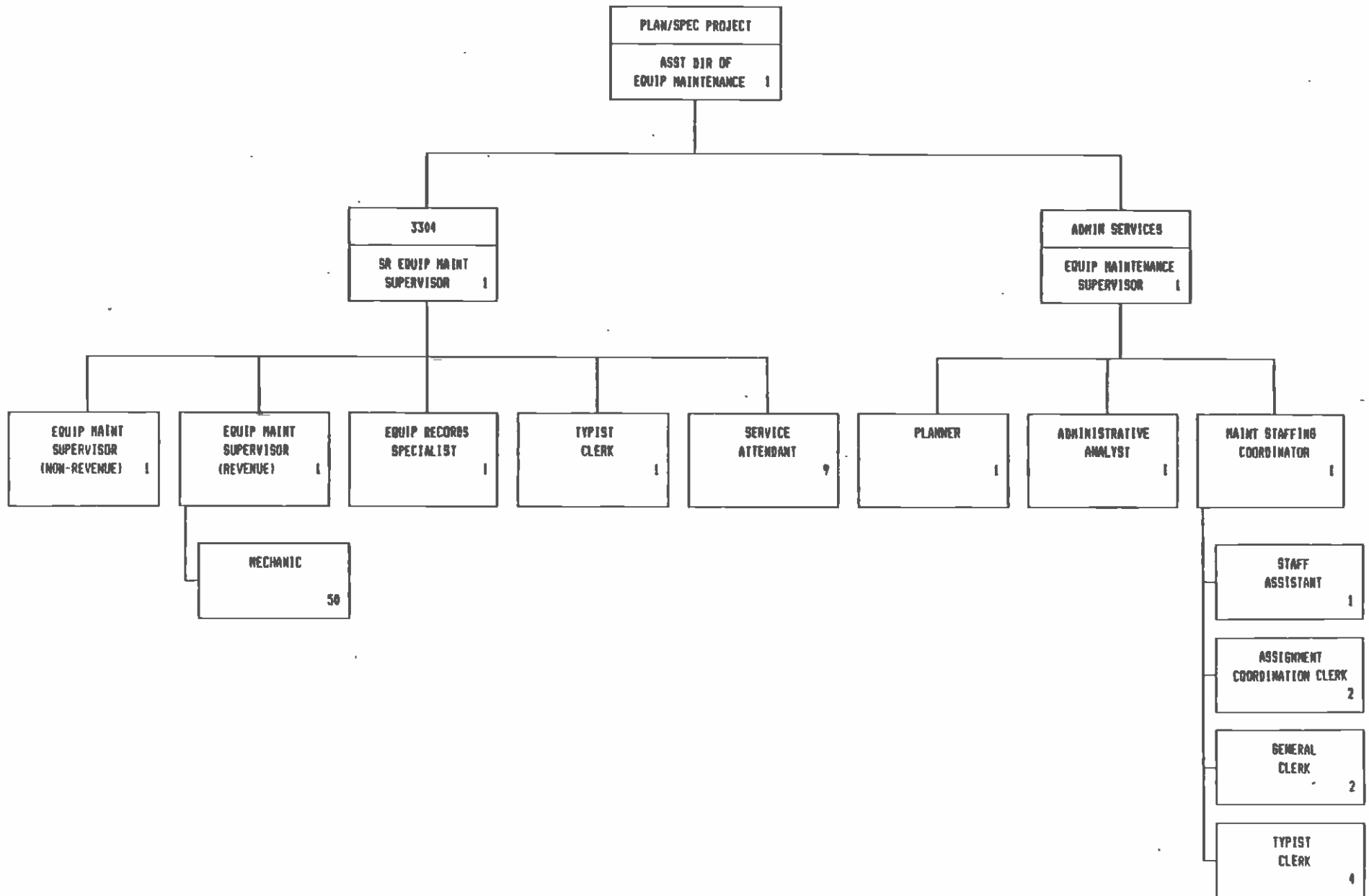


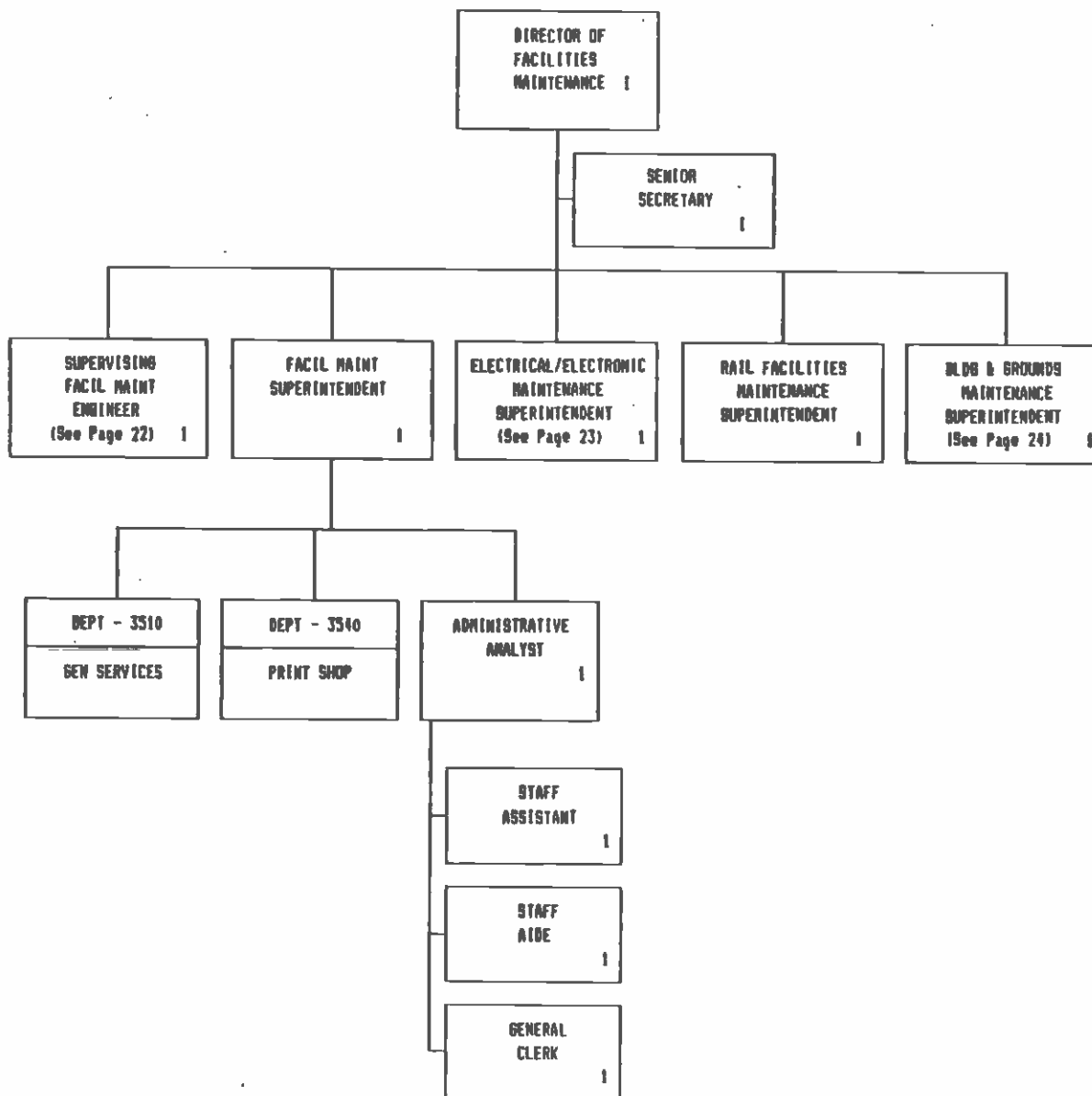


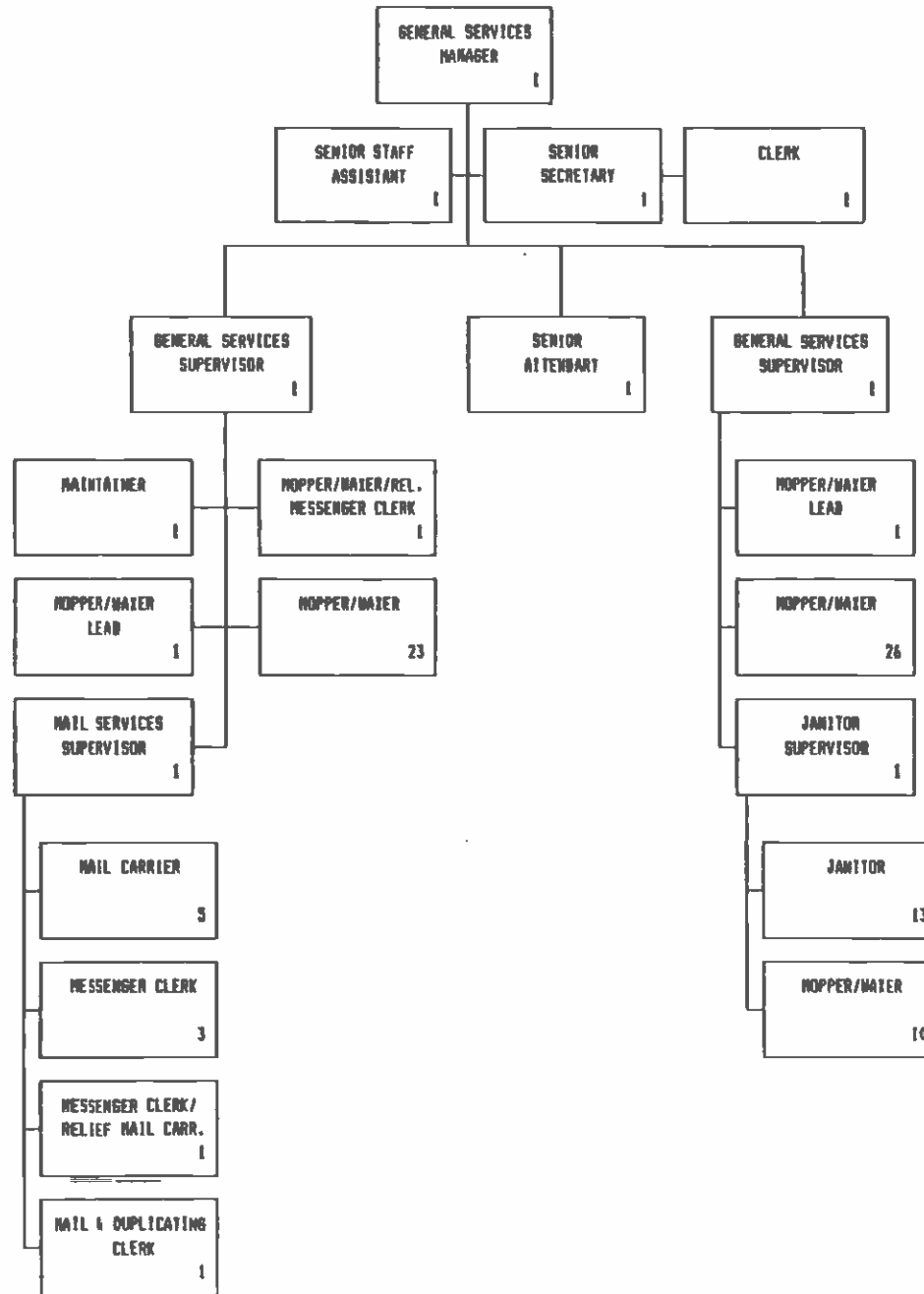


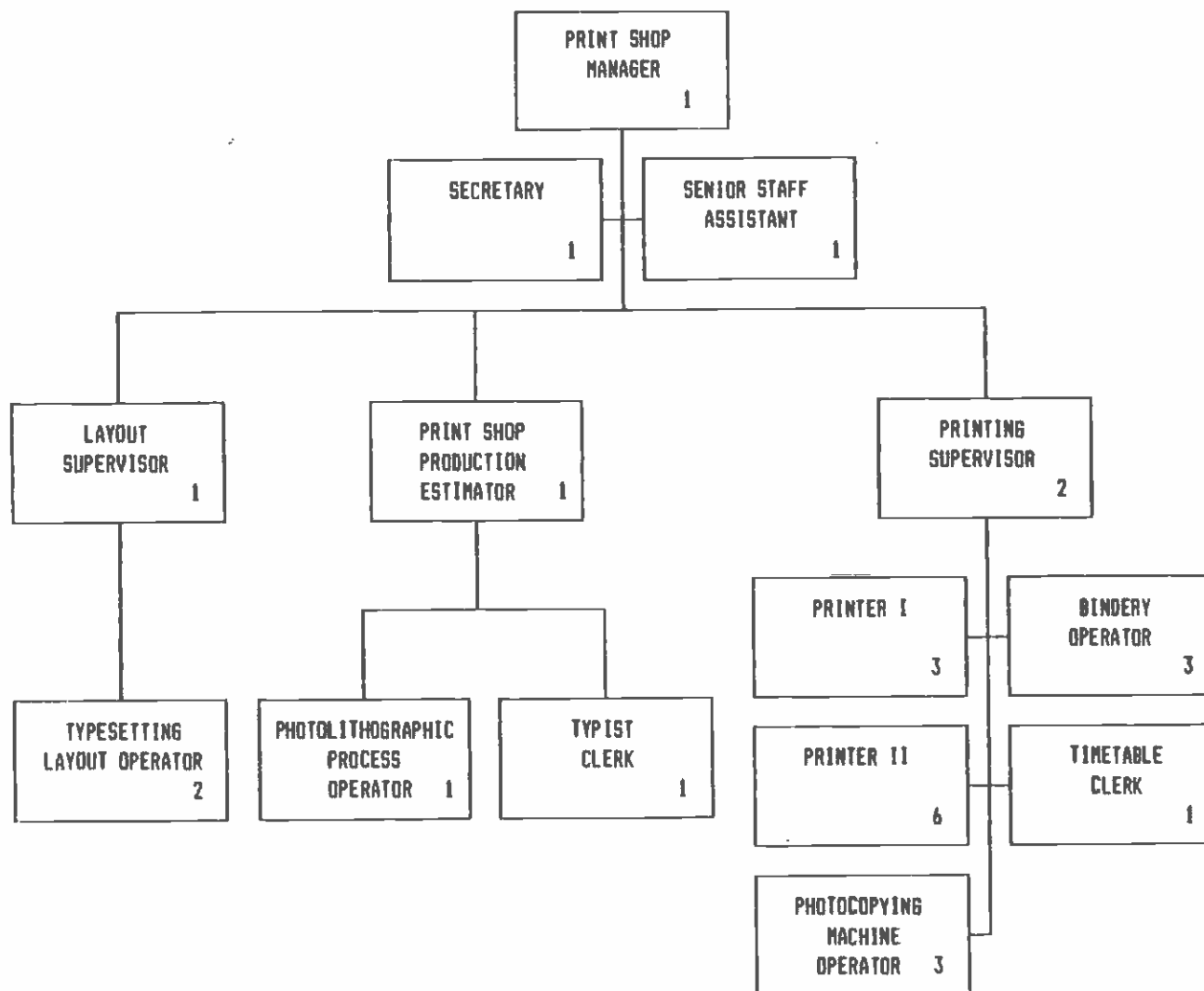


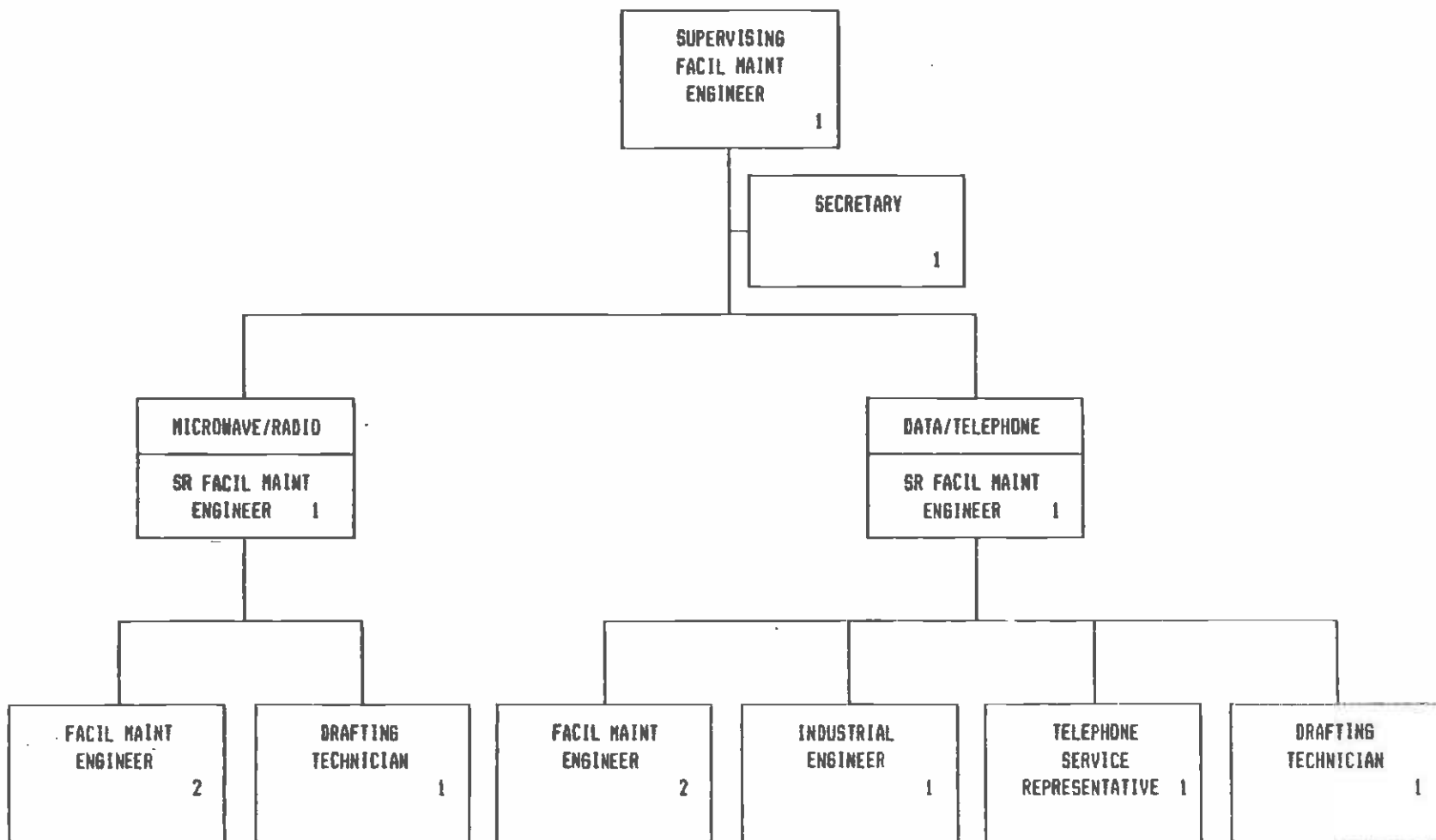


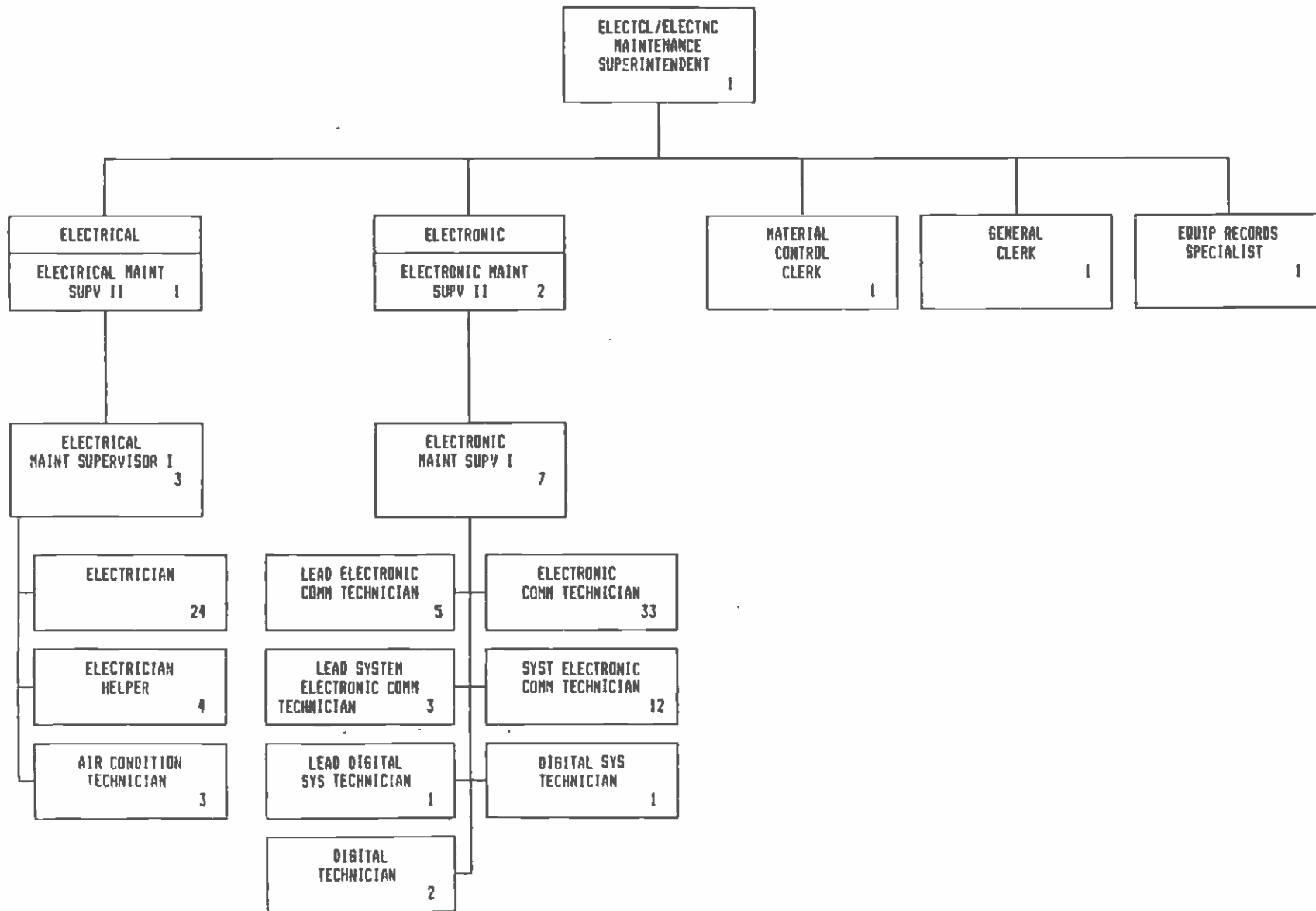


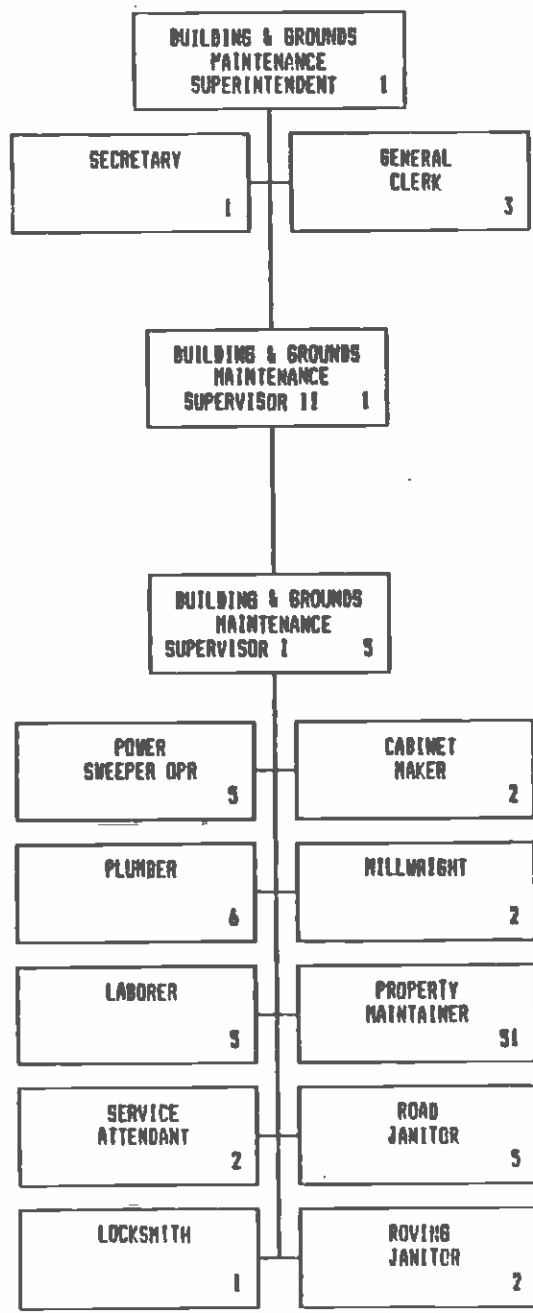


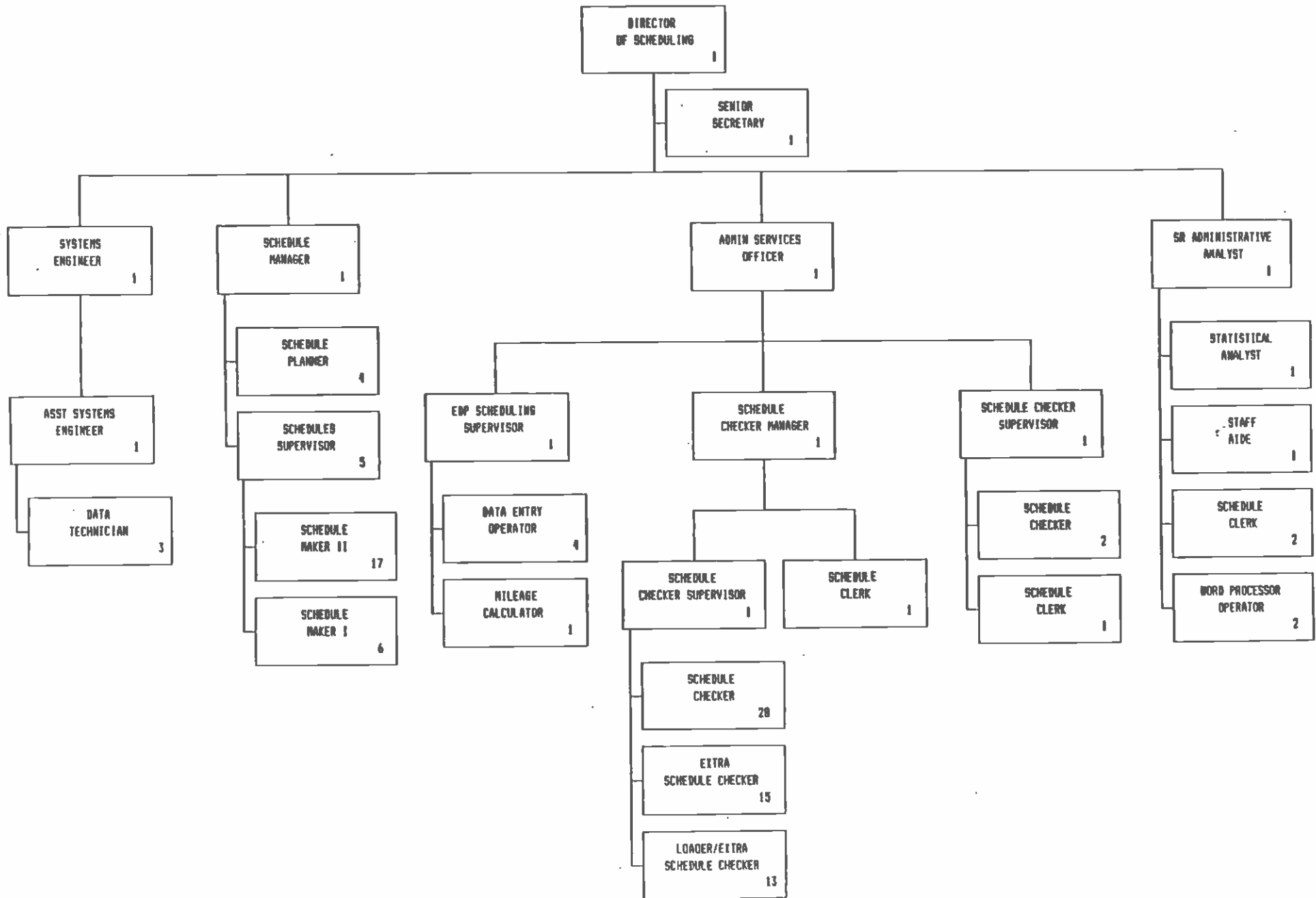


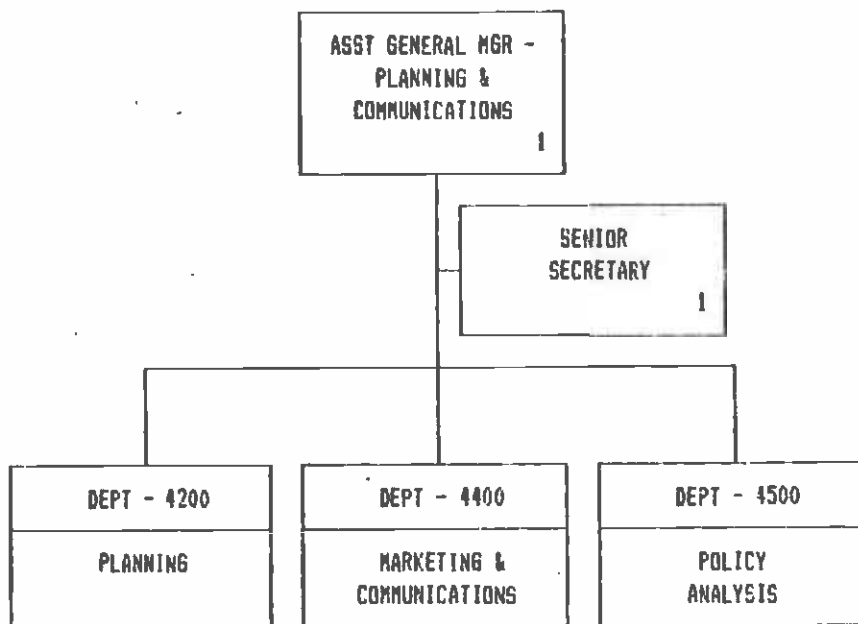


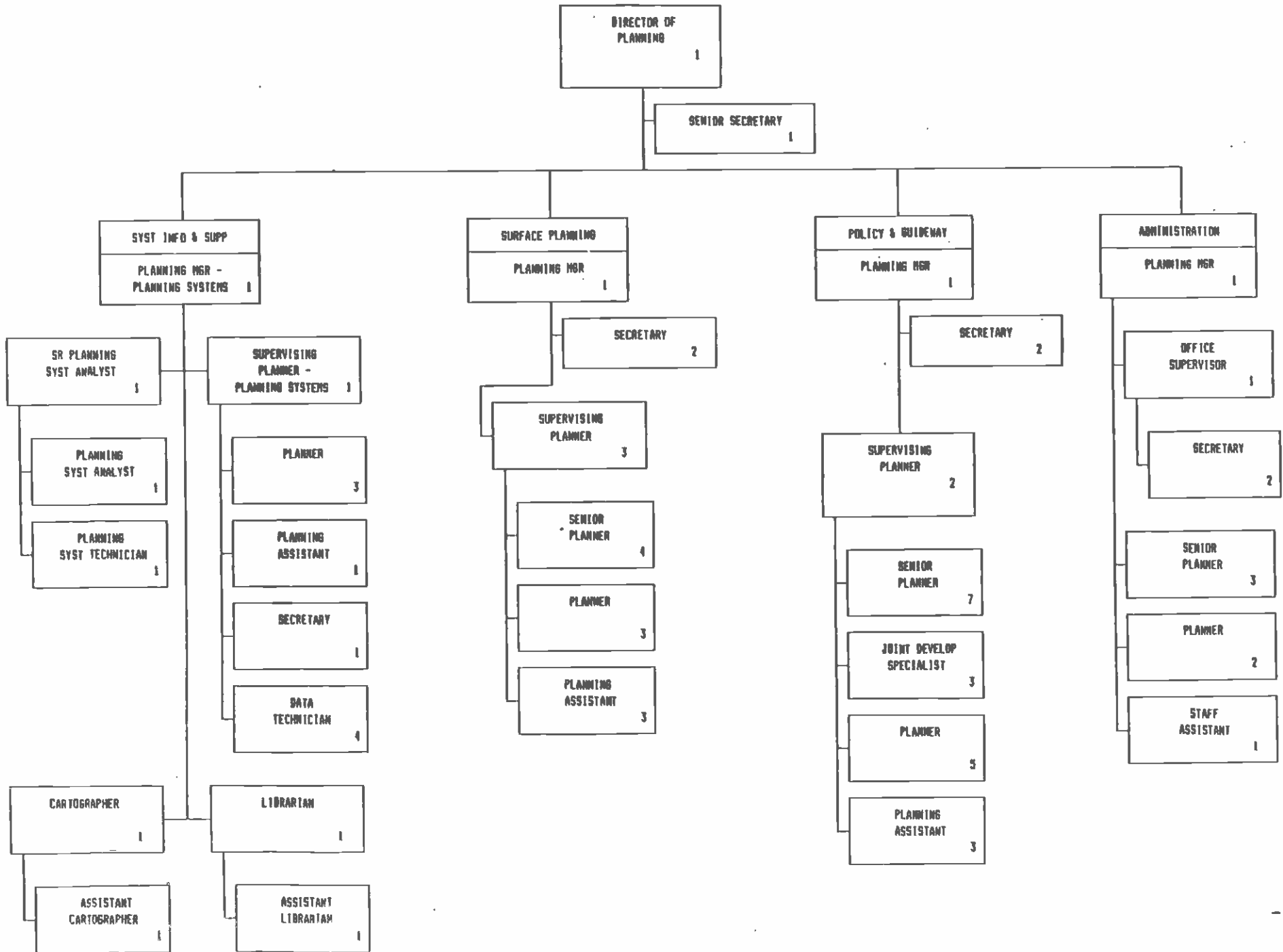


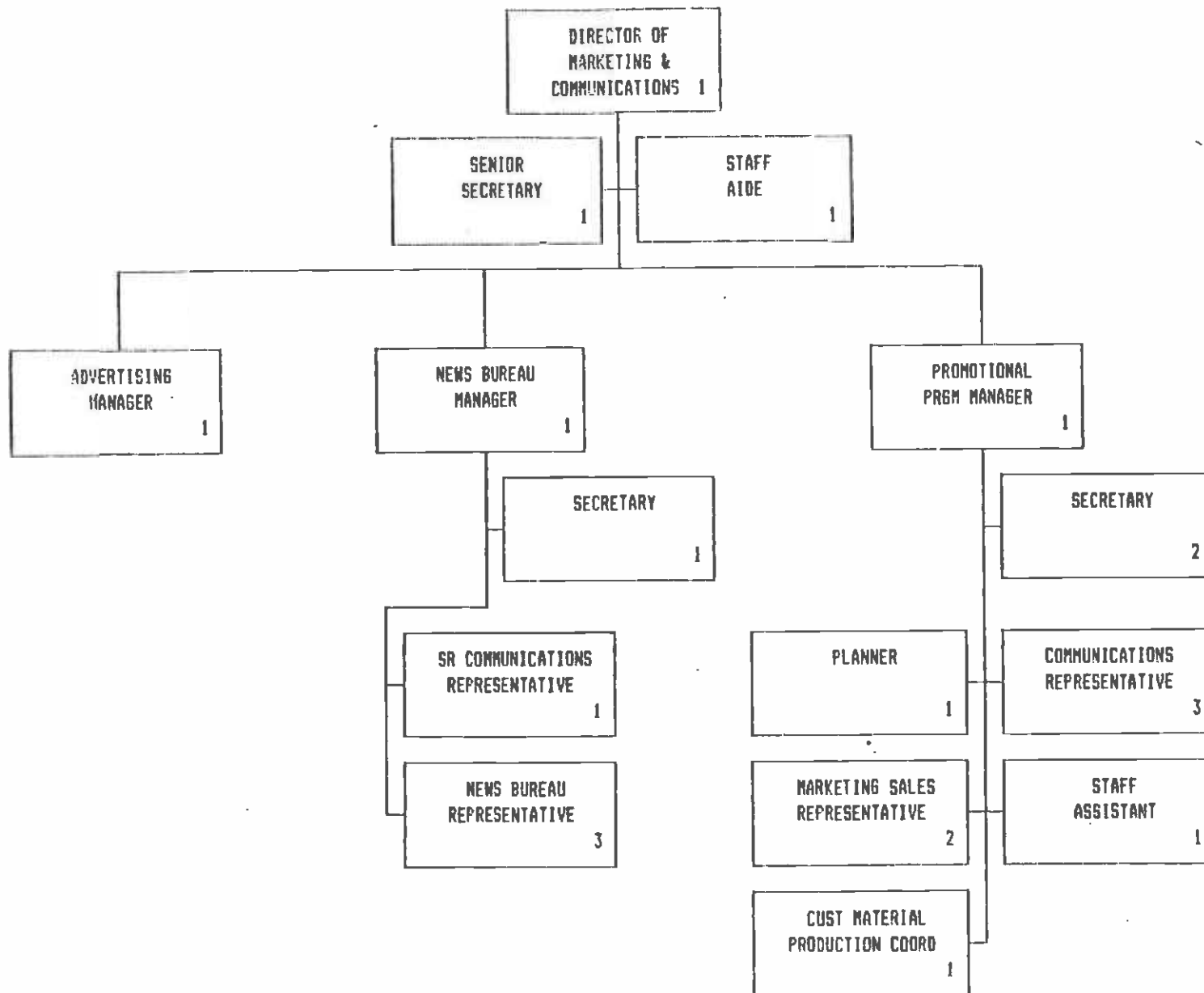


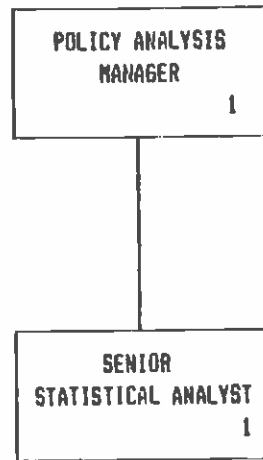


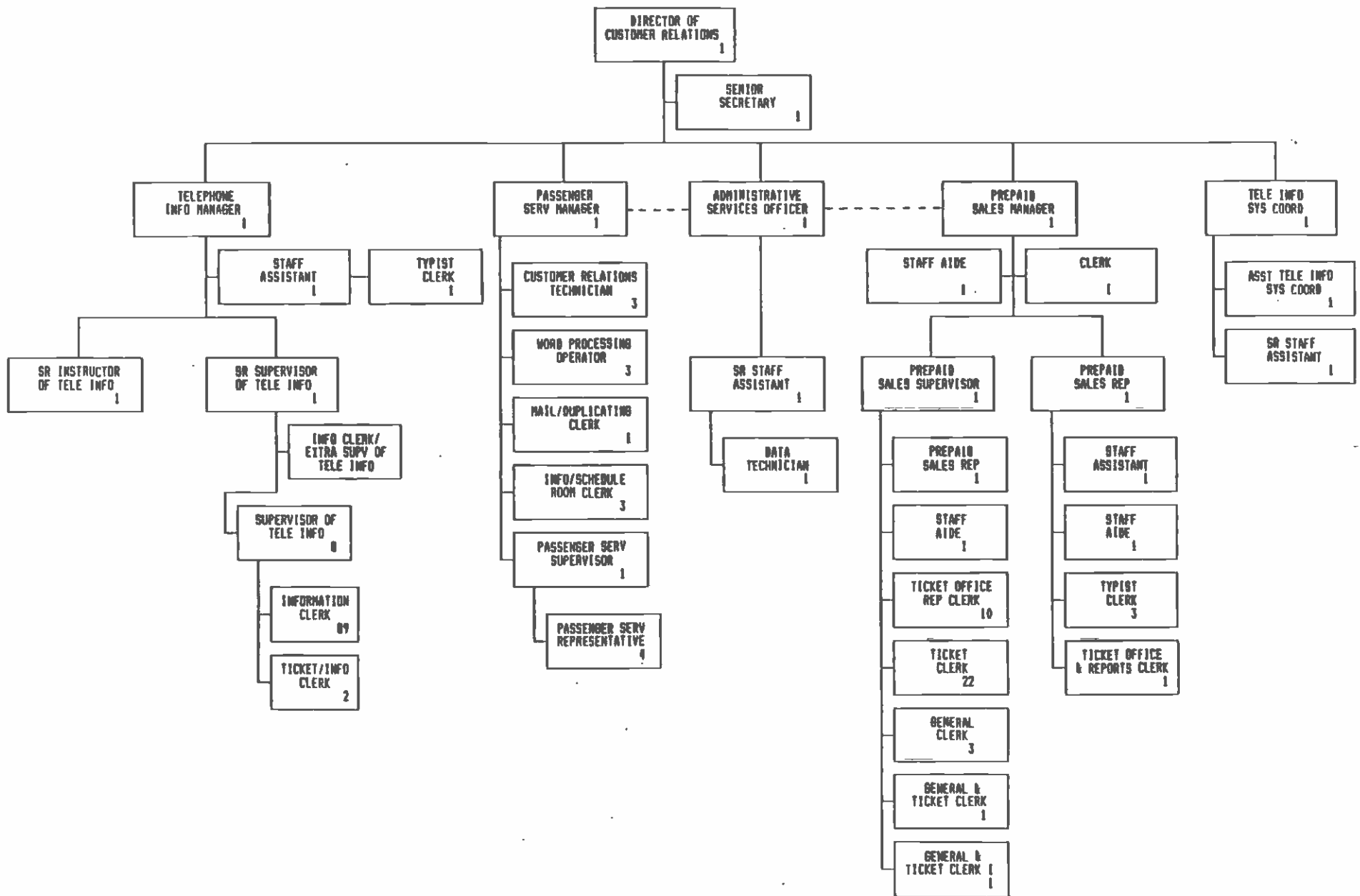




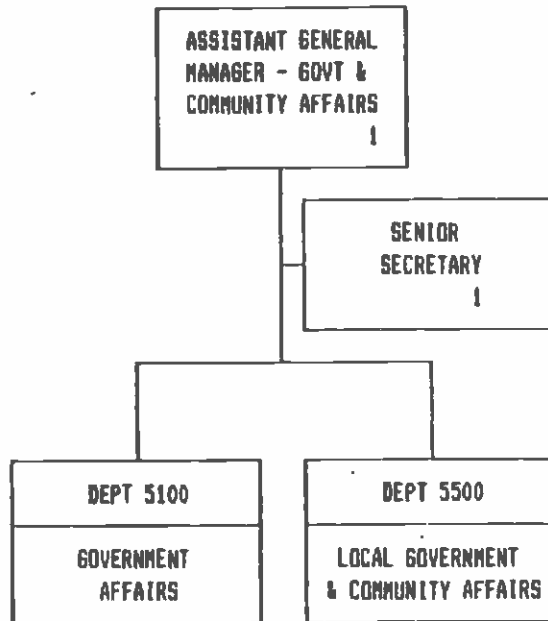


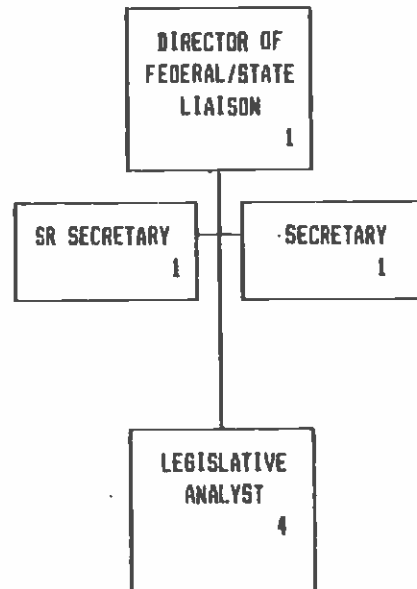


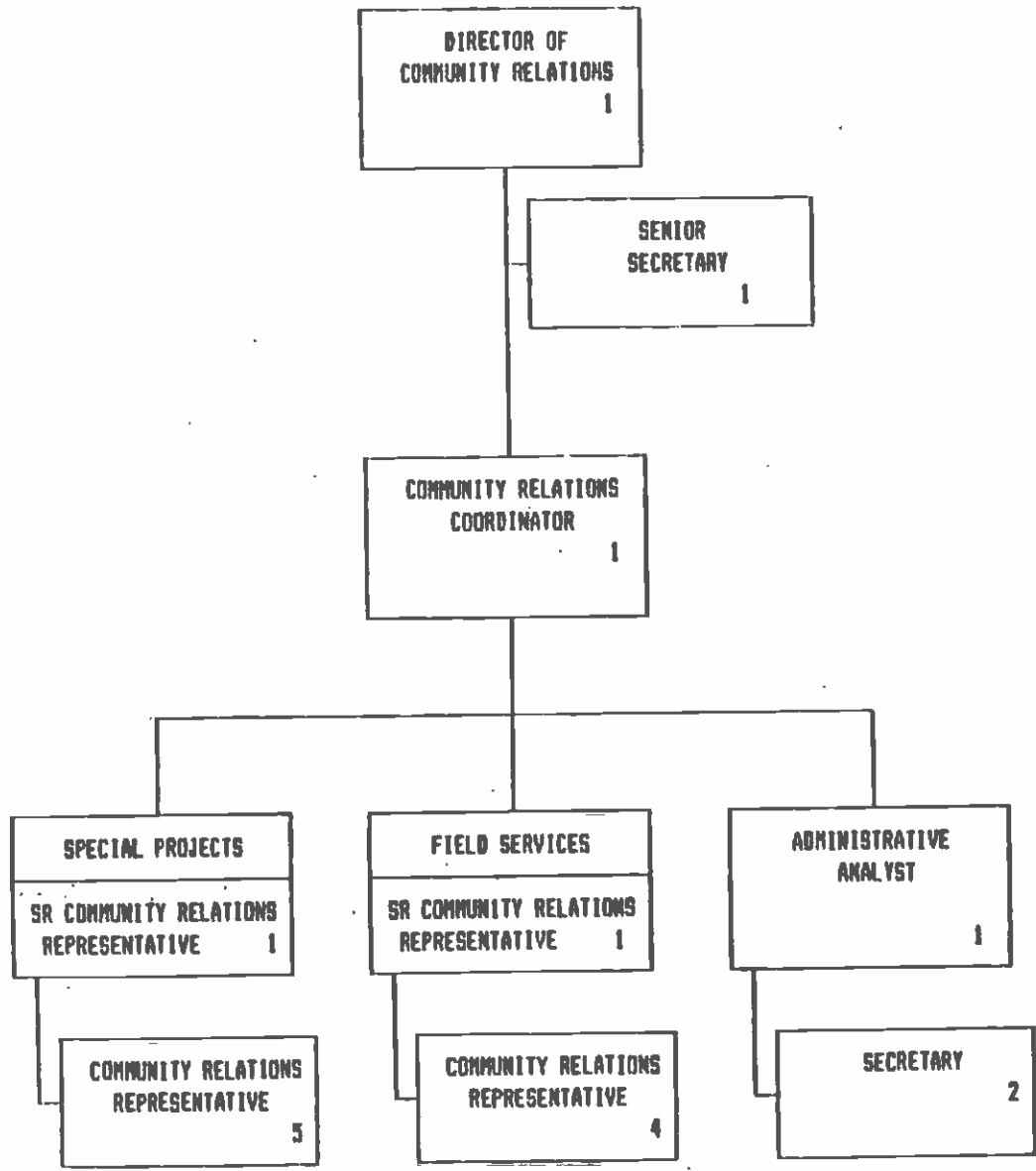


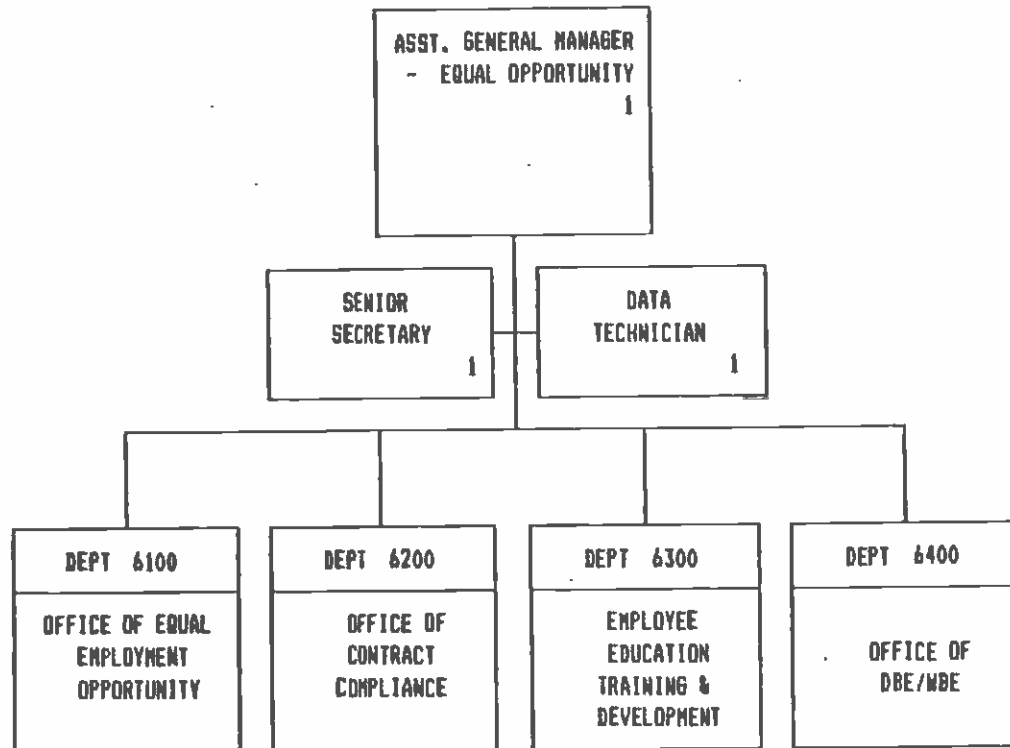


5099 - ASSISTANT GENERAL MANAGER -
GOVERNMENT AFFAIRS & LOCAL
GOVERNMENT AFFAIRS

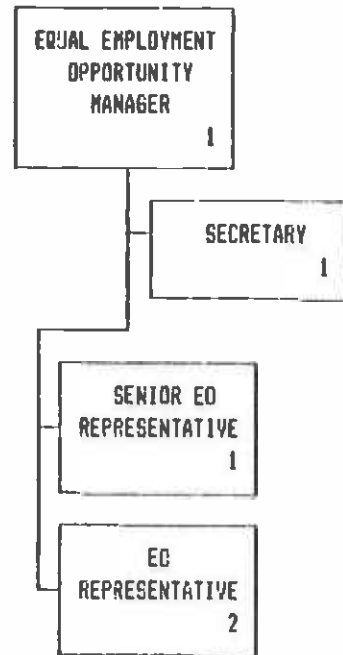


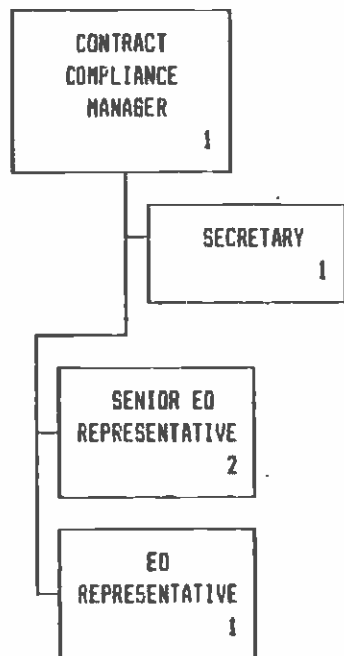


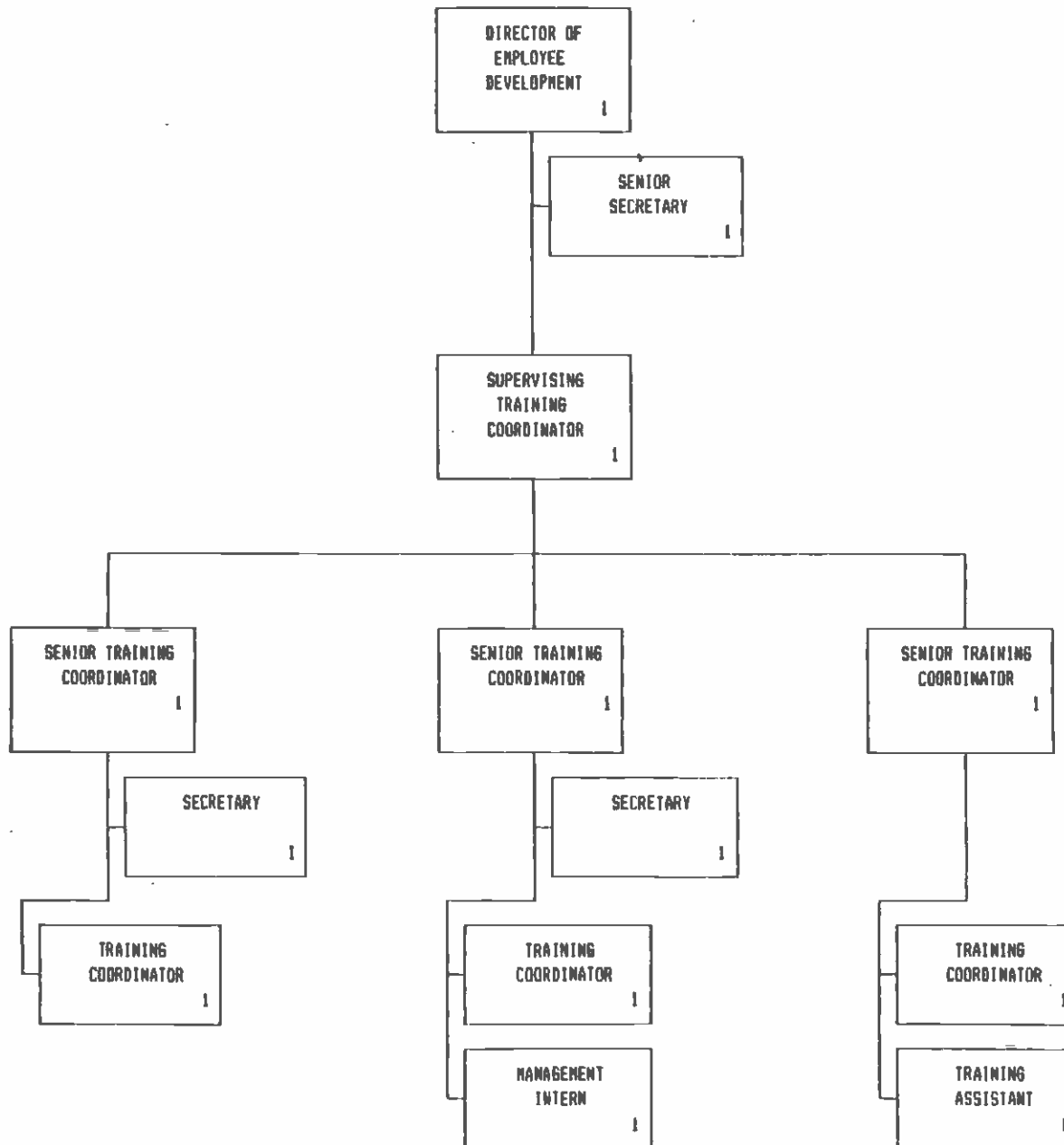


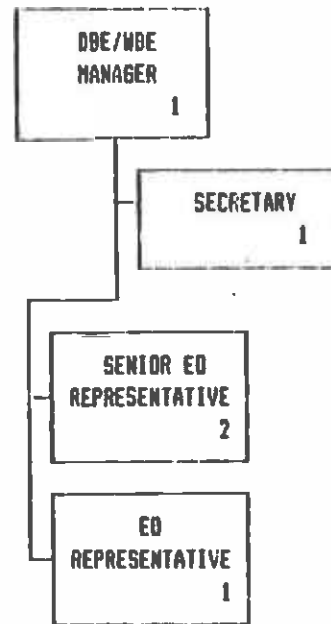


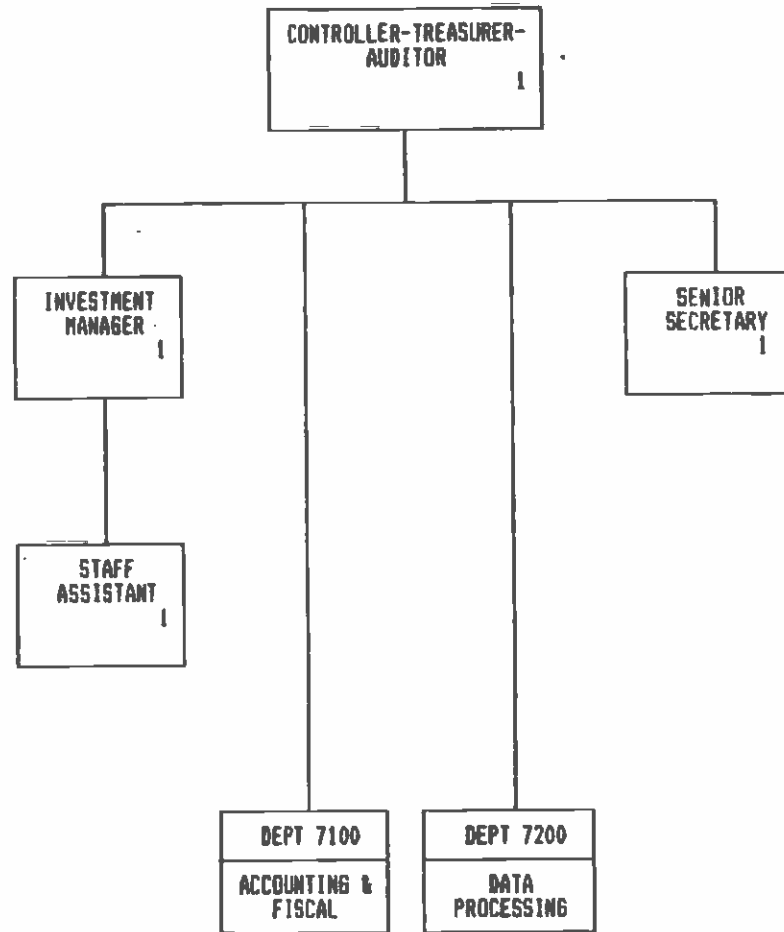
6100 - OFFICE OF EQUAL
EMPLOYMENT OPPORTUNITY

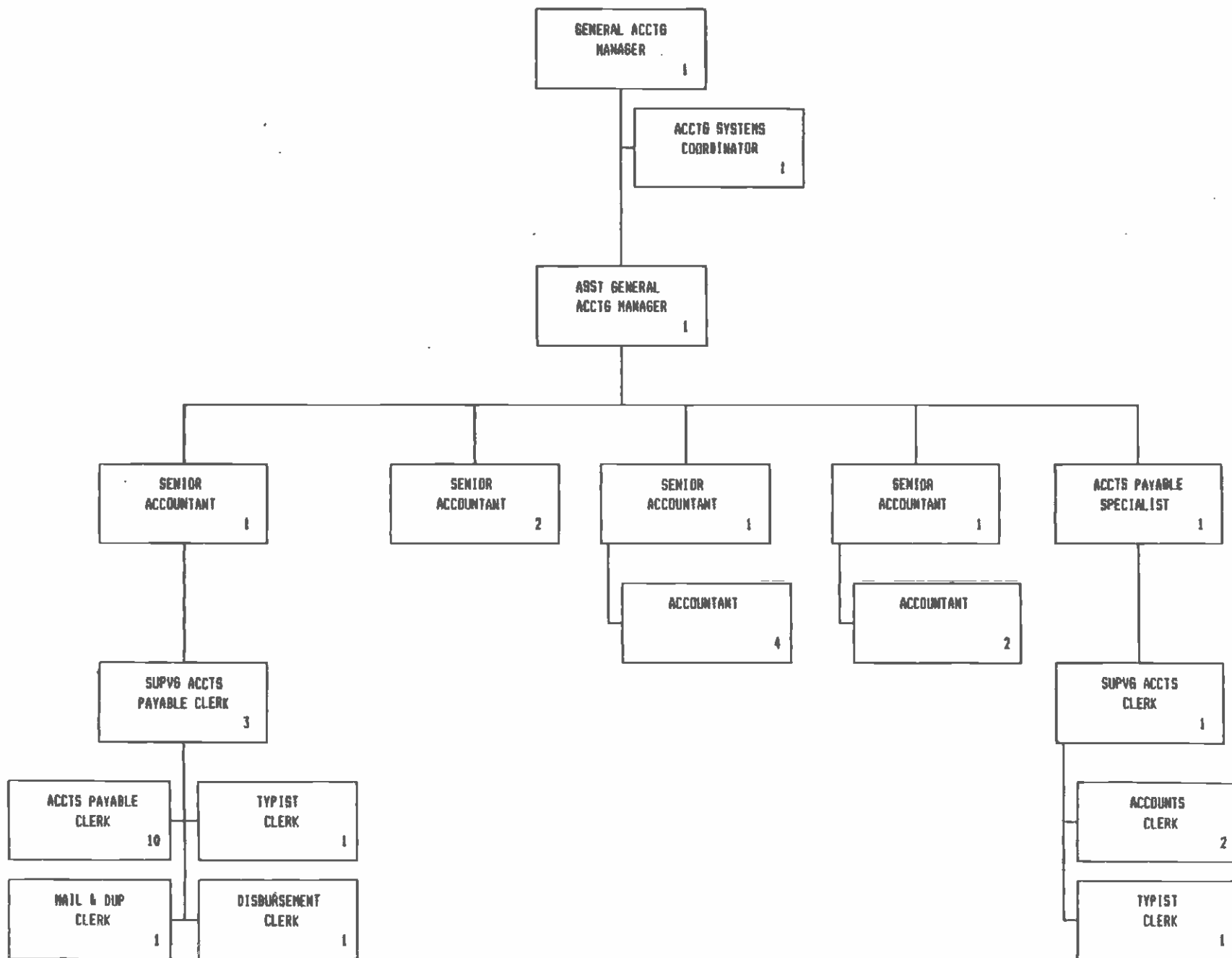


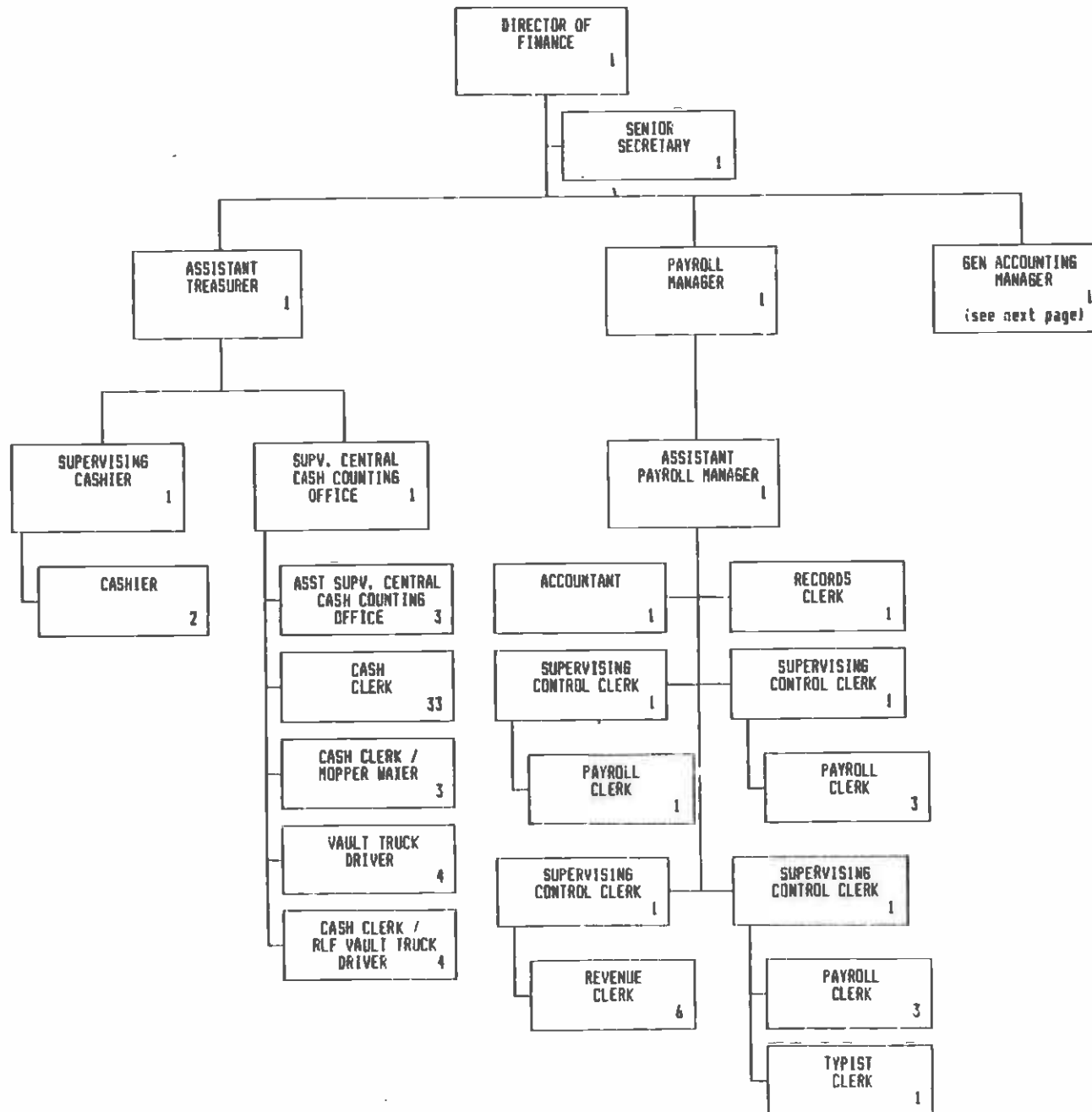


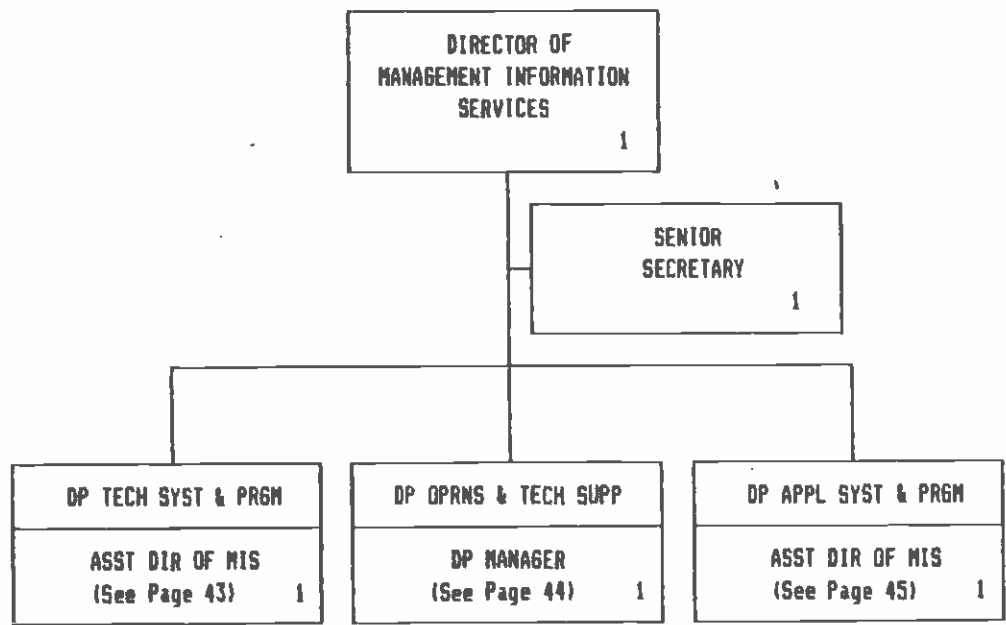


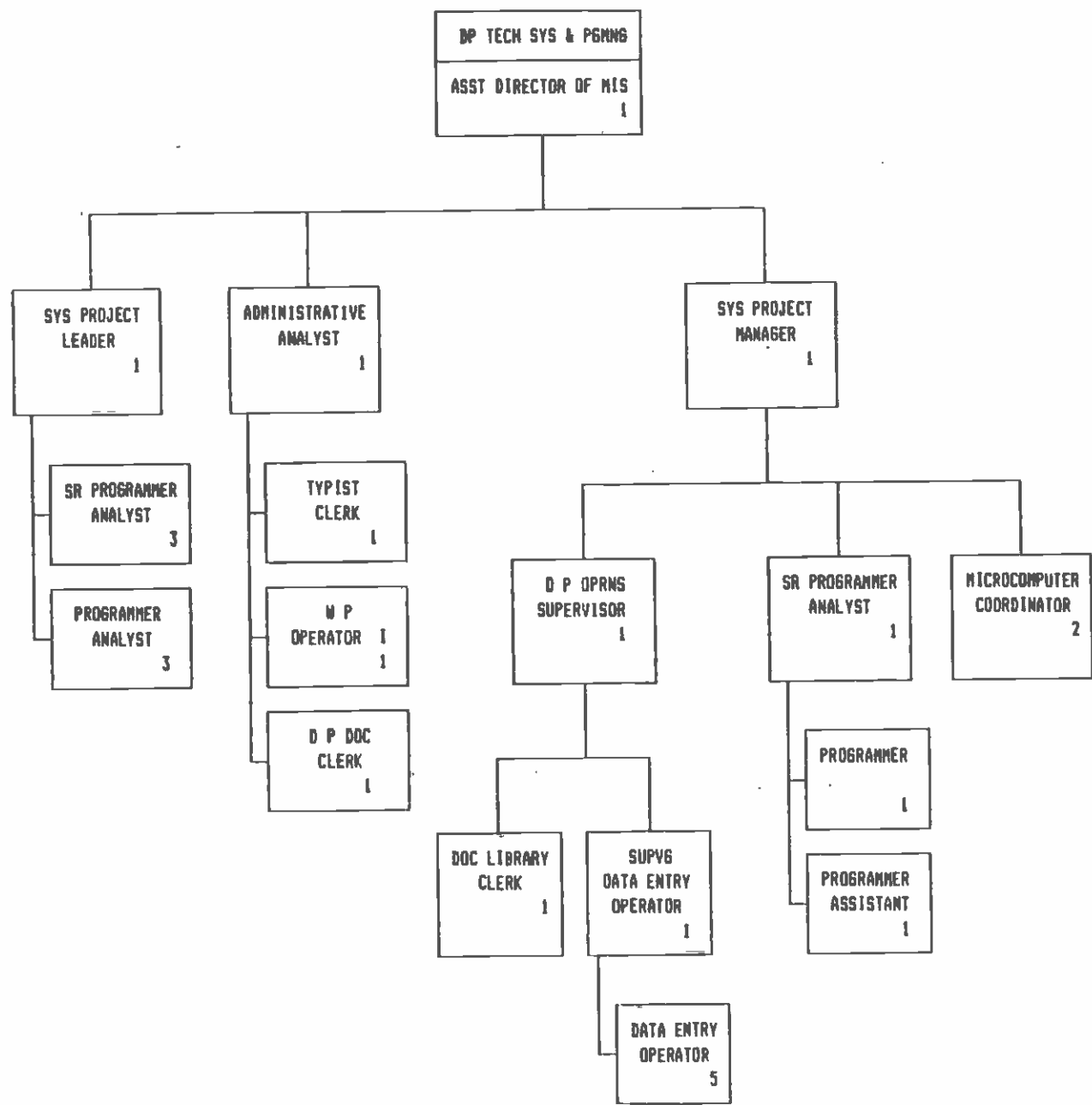


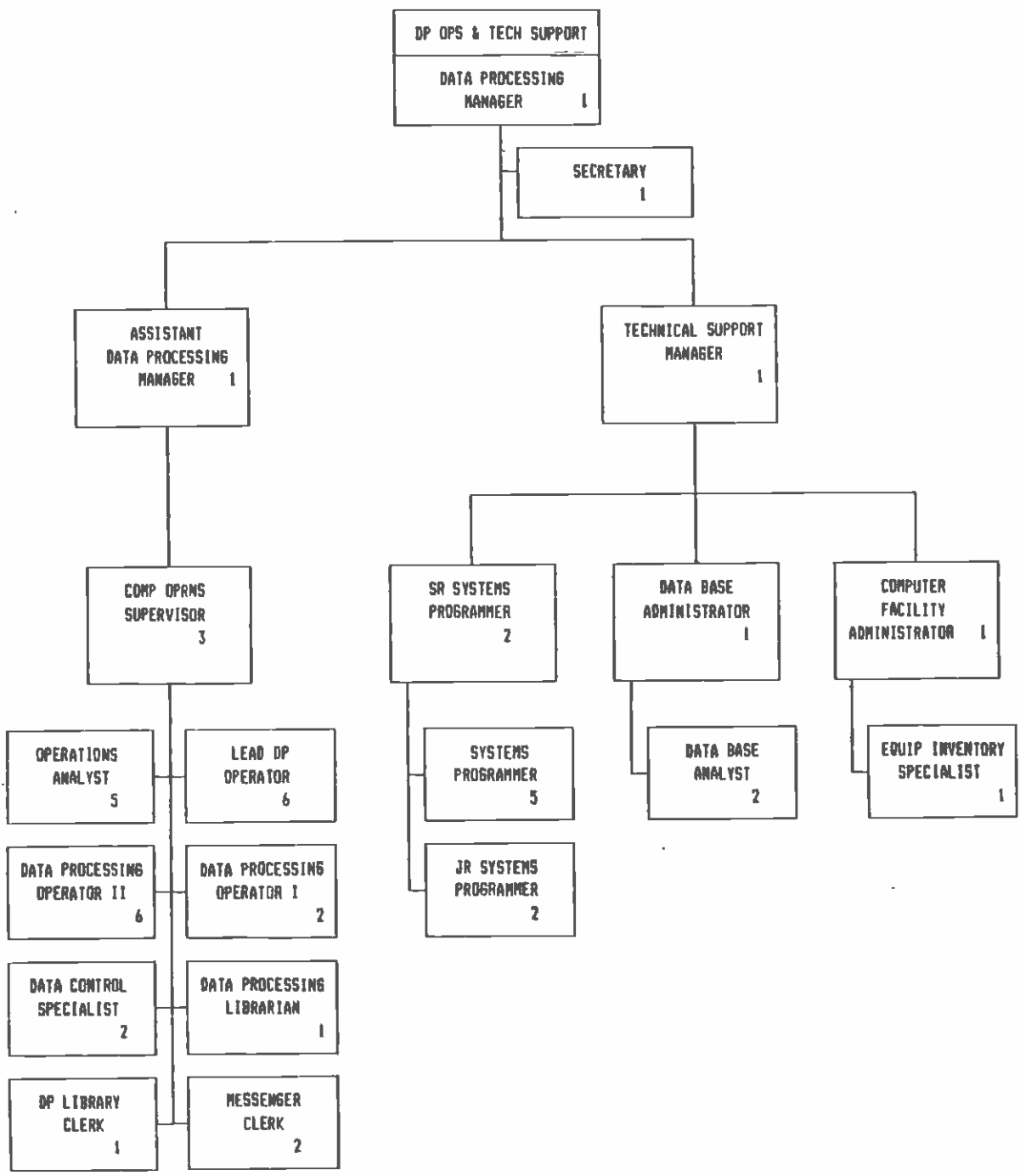


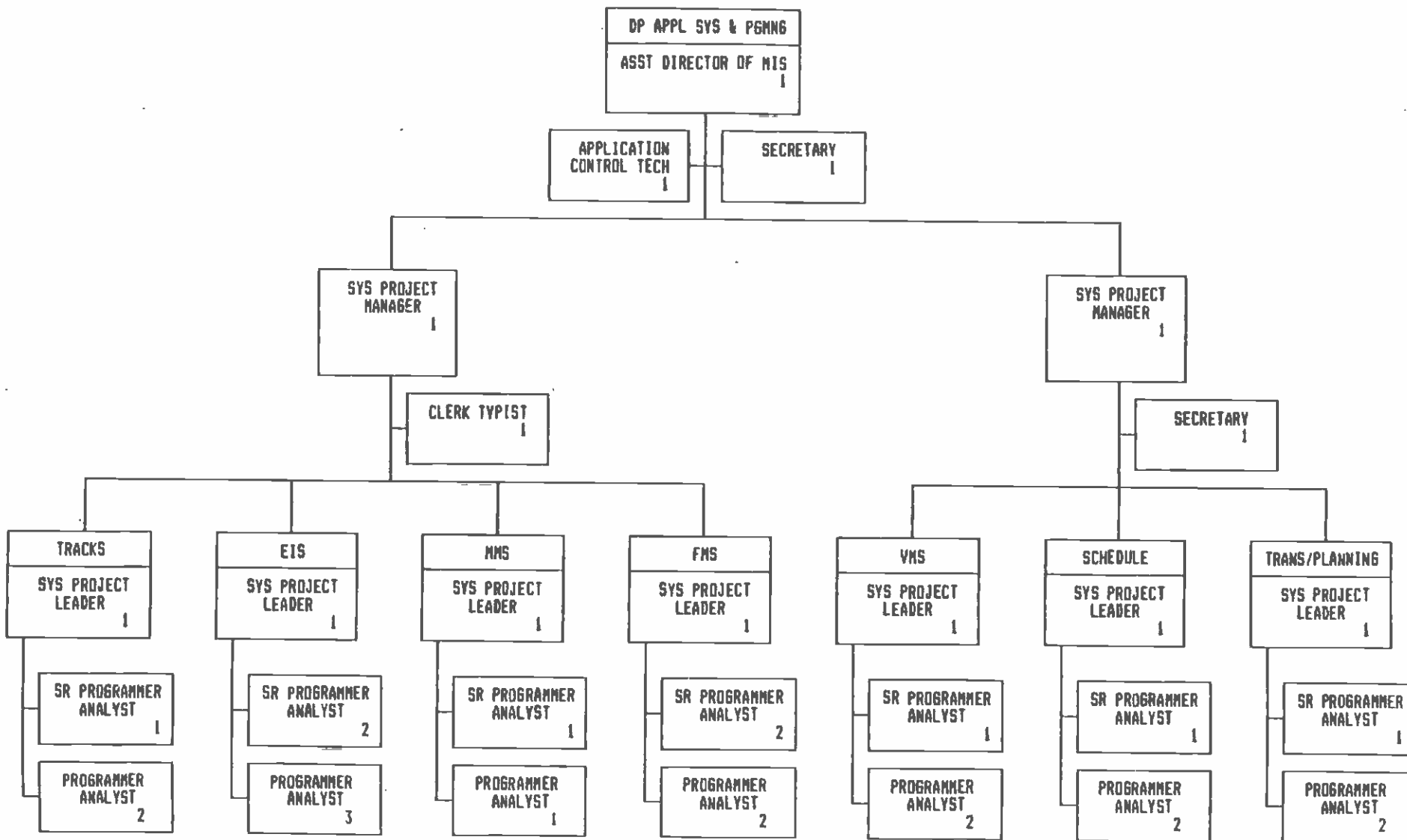


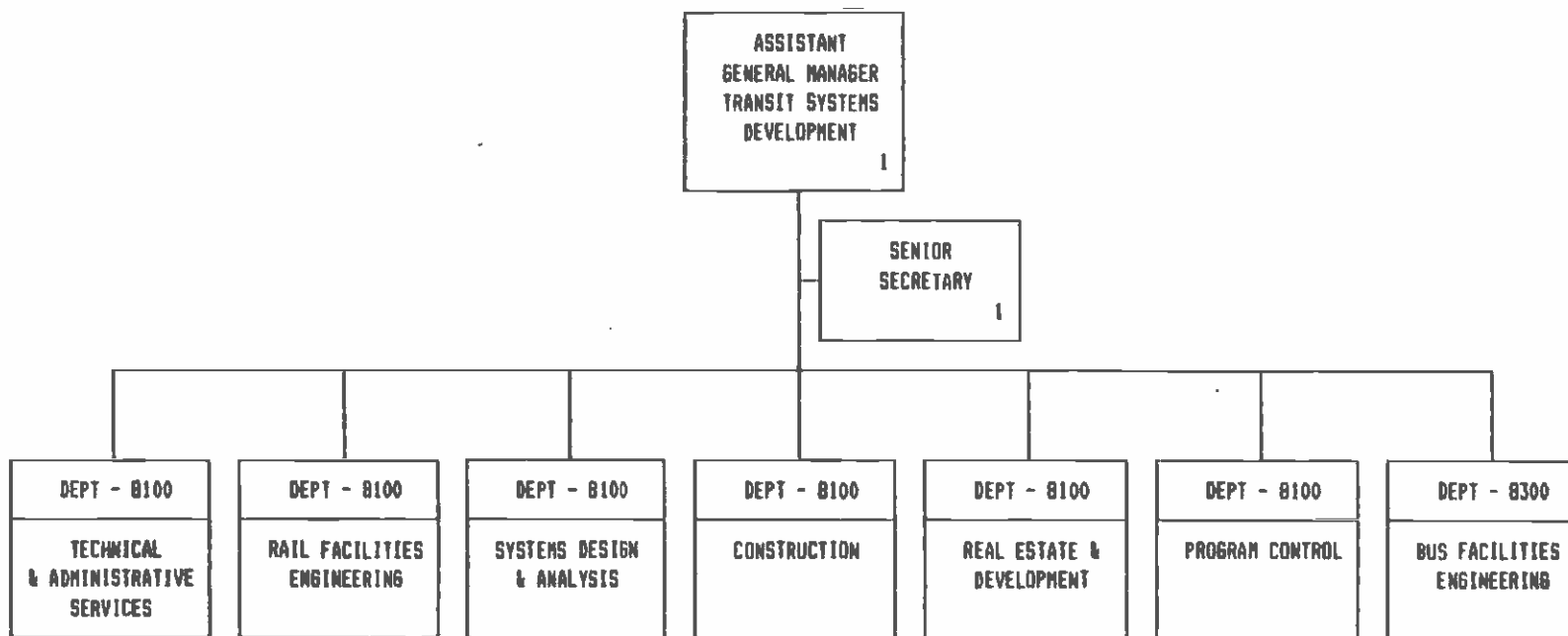


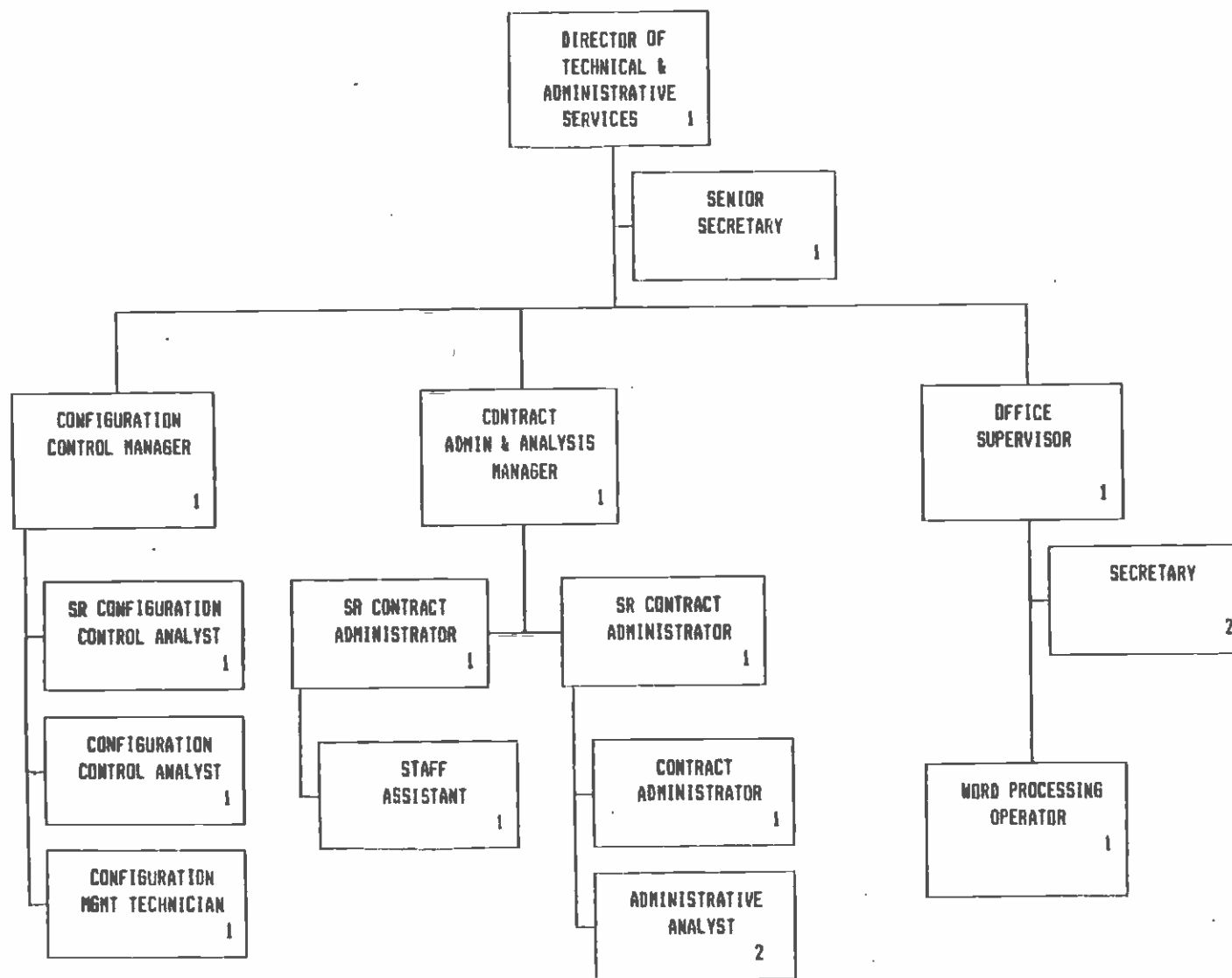


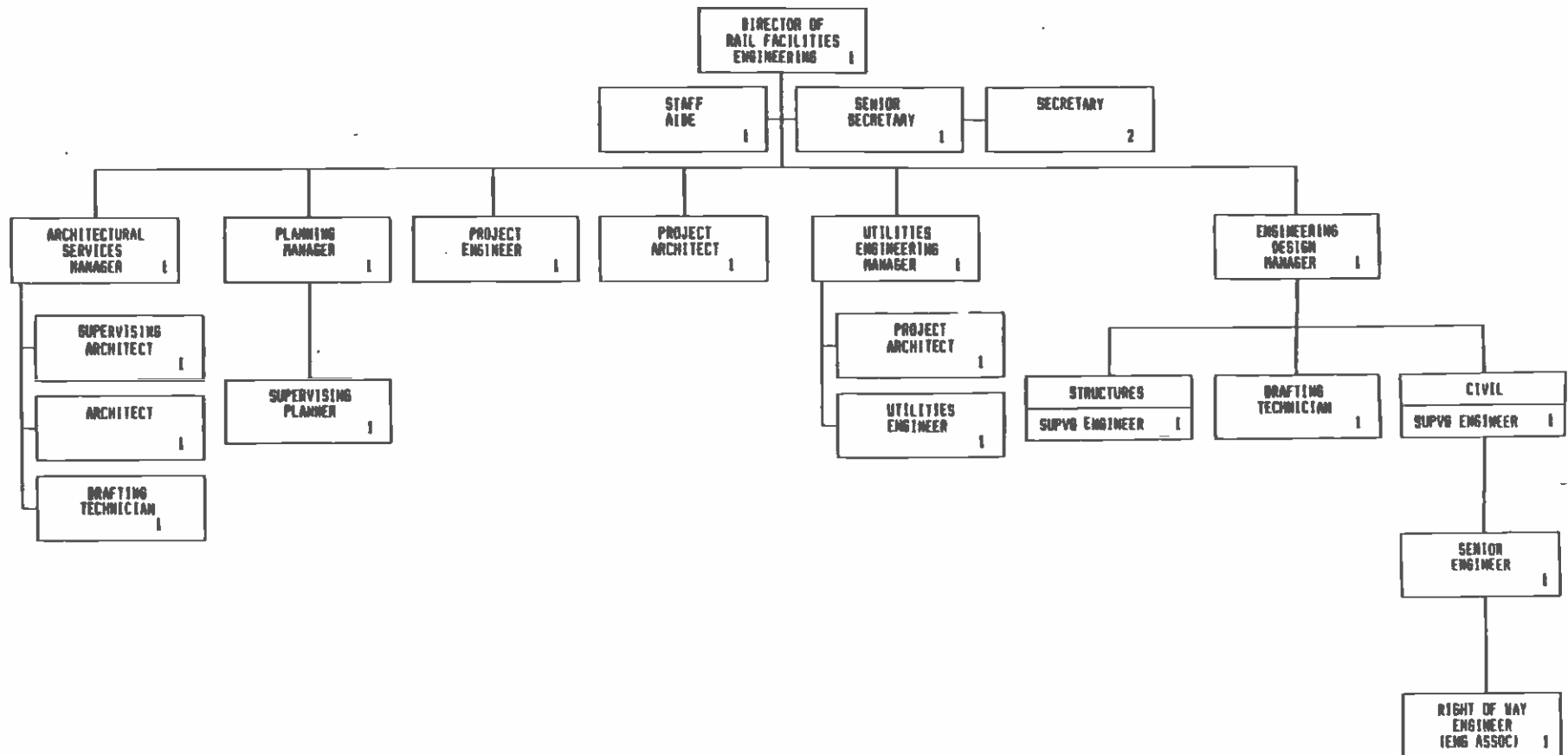


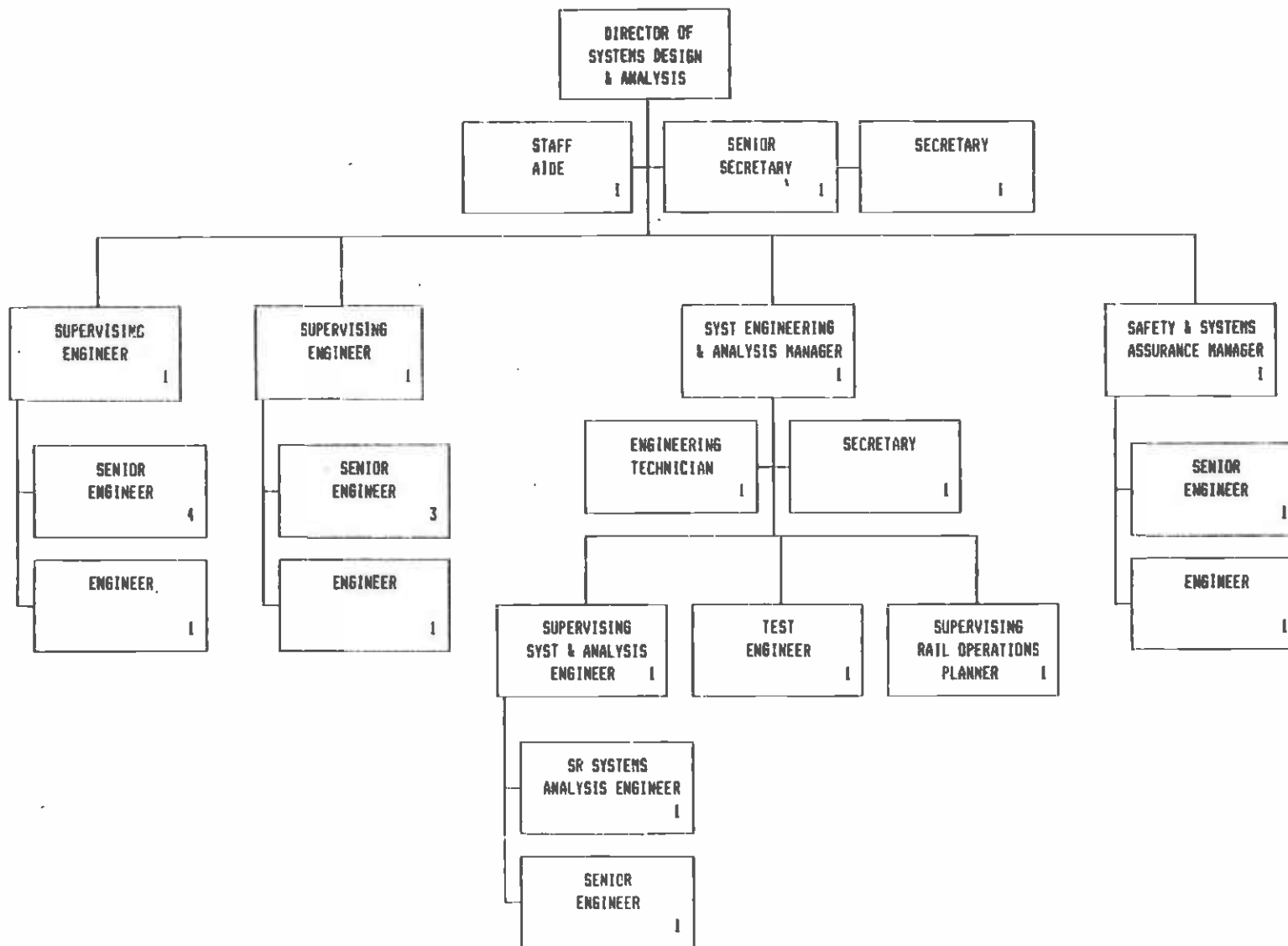


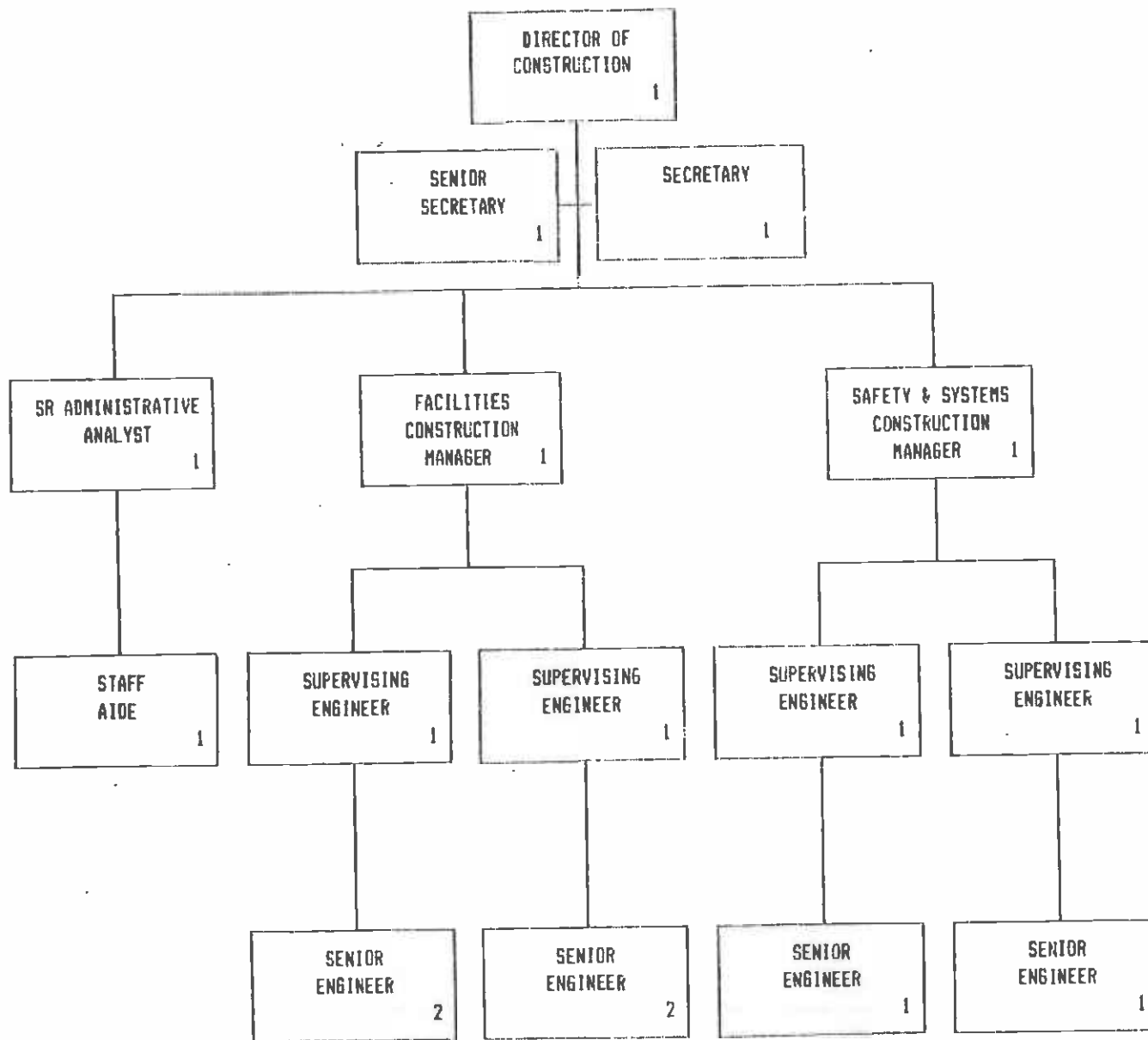


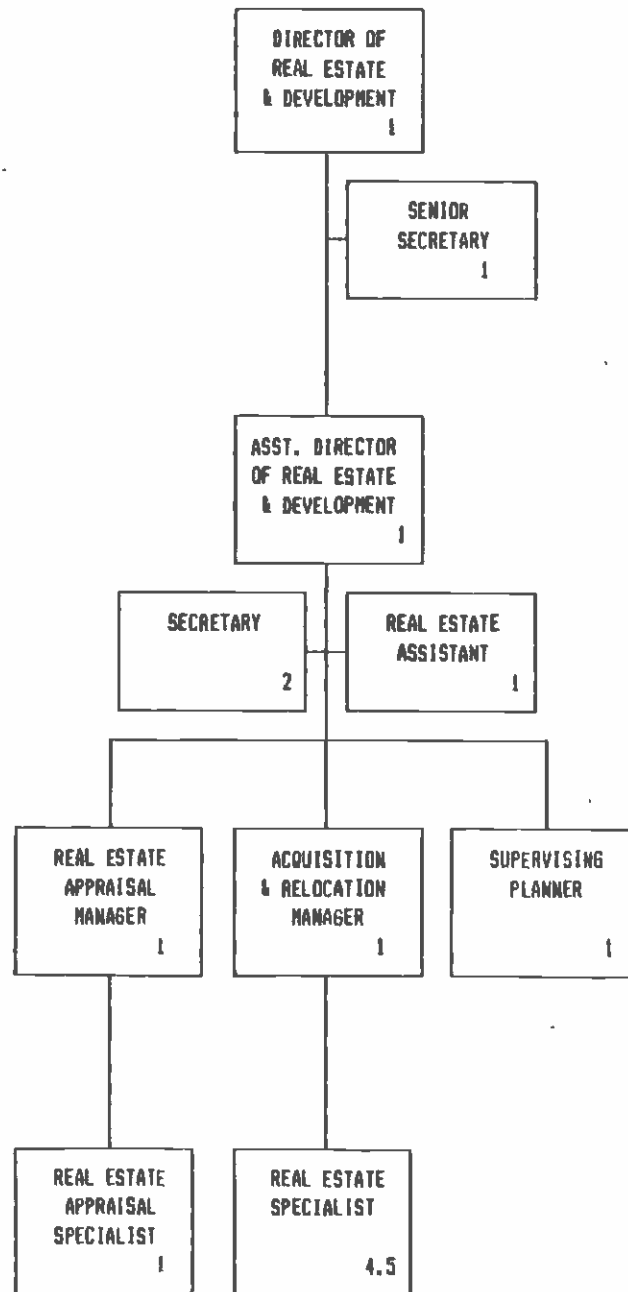


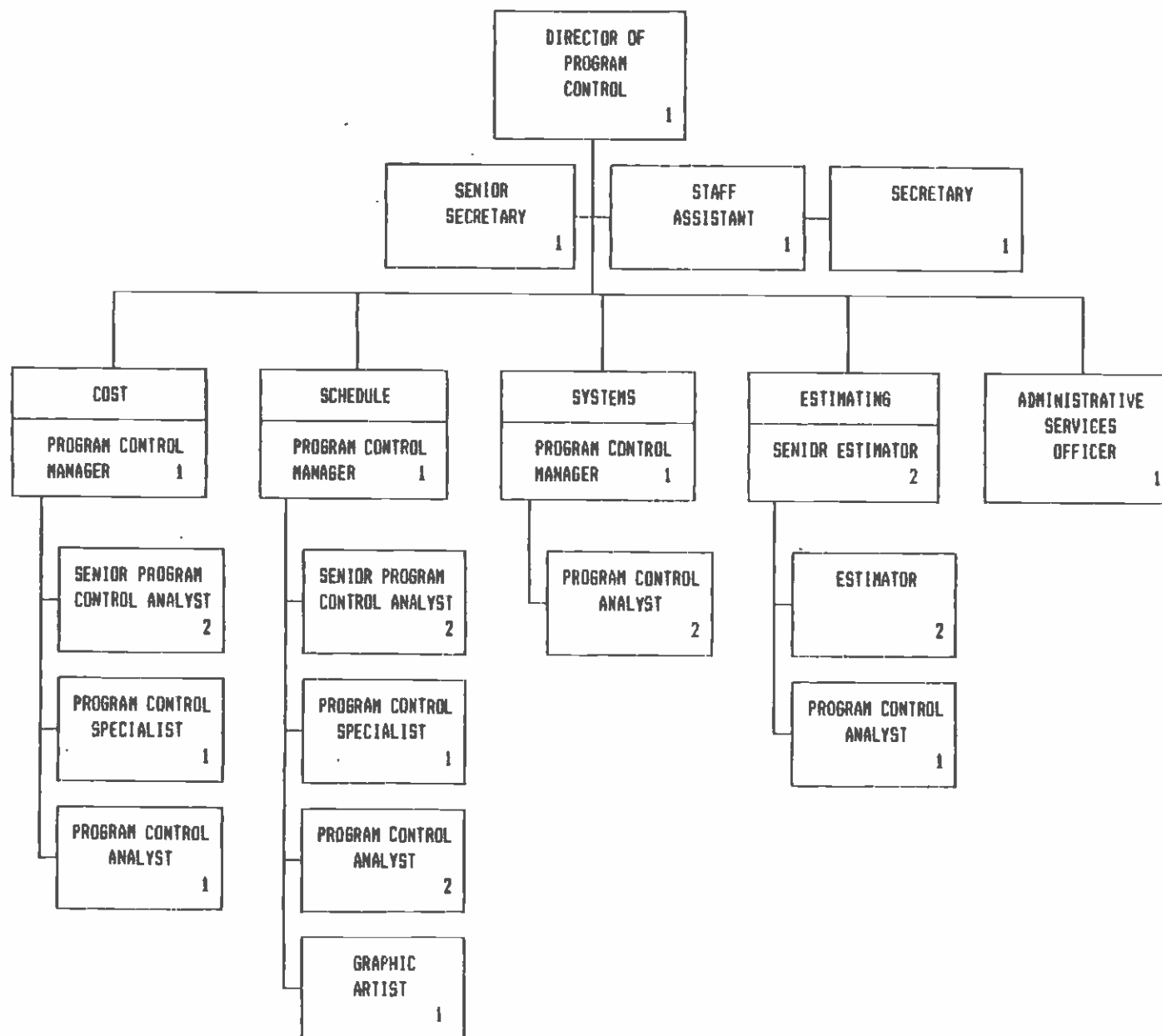


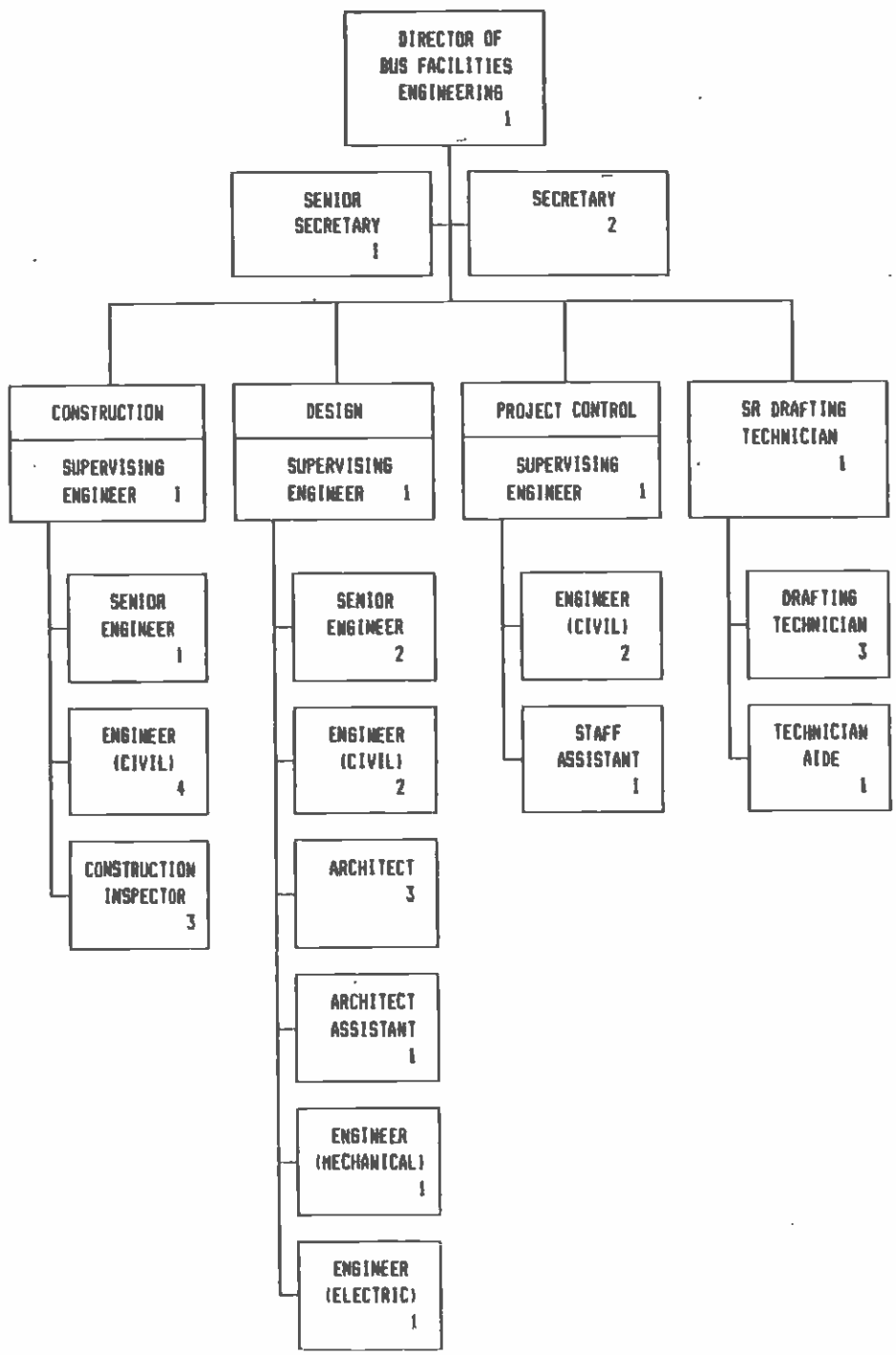












9099 - ASSISTANT GENERAL MANAGER
- MANAGEMENT

