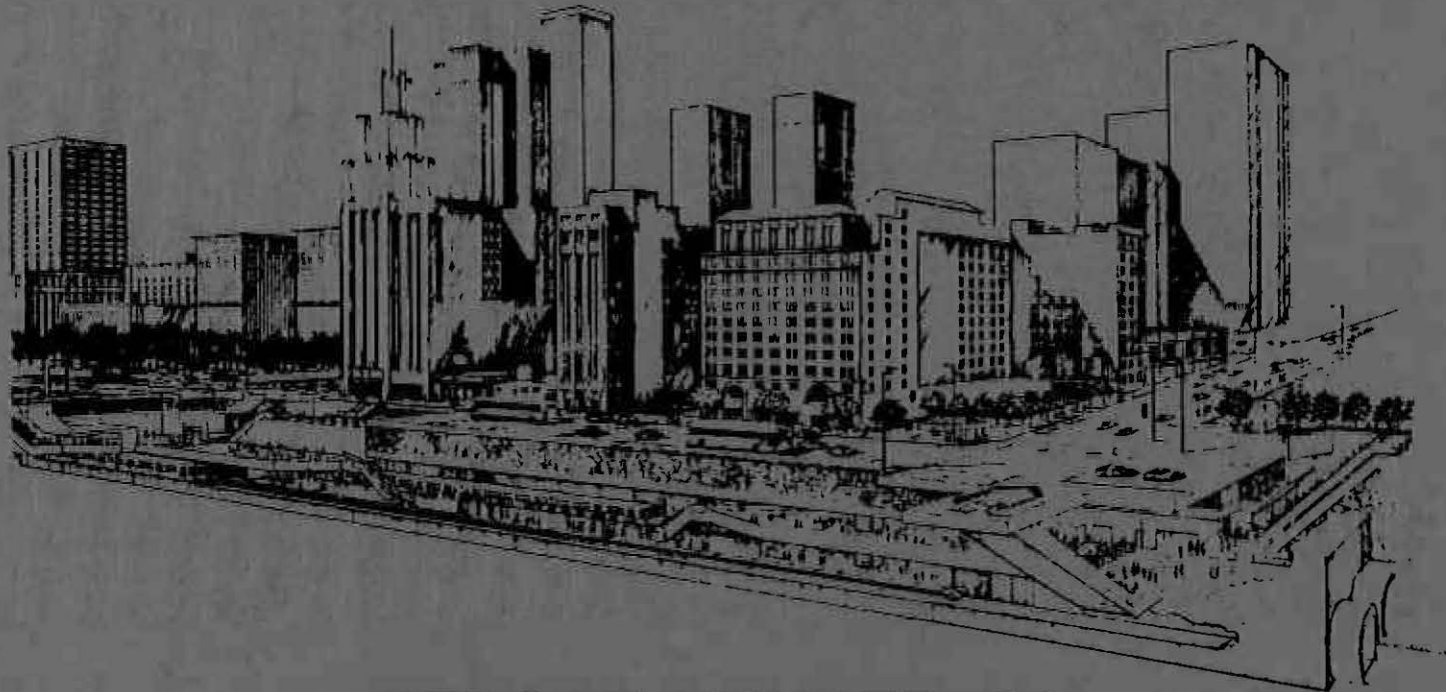


SCRPTD
1985-
.M46
R46
no. 51

RTD

LOS ANGELES **METRO RAIL** PROJECT MONTHLY CONTRACT PERFORMANCE REPORT



**REPORT NUMBER 51
SEPTEMBER 1988**

PDCD

**MONTHLY CONTRACT
PERFORMANCE REPORT**

for the

LOS ANGELES METRO RAIL PROJECT

SEPTEMBER 1988

presented to

Southern California Rapid Transit District

CONTRACT NO. 3369

**The preparation of this Document has been financed
in part through grants from the State of California,
the City of Los Angeles, the Los Angeles County
Transportation Commission and the U. S. Department
of Transportation, Urban Mass Transportation
Administration, under the Urban Mass Transportation
Act of 1964, as amended.**

Month SEPTEMBER Year 1988



LOS ANGELES METRO RAIL
CONTRACT PERFORMANCE
REPORT

PDCD

PERIOD SEPTEMBER 1988

TABLE OF CONTENTS

	Page
I. Construction Manager's Summary Statement	1
II. Manpower Performance	7
III. Equal Opportunity Performance	10
IV. Schedule Performance	12
V. Cost Performance	14
VI. Additional Activities Performed in September	24
VII. Summary of Activities Planned for October	34
VIII. Subcontractor/Consultant Status	38
IX. Construction Progress Photos	

SECTION I

**CONSTRUCTION MANAGER'S
SUMMARY STATEMENT**



LOS ANGELES METRO RAIL

POCD

CONTRACT PERFORMANCE REPORT

PERIOD SEPTEMBER 1988

I. CONSTRUCTION MANAGER'S SUMMARY STATEMENT

MAJOR CM ACTIVITIES

This Contract Performance Report (CPR) for the month of September 1988 is the third CPR in the Fifth Annual Work Plan (5th AWP) and covers the period August 27 through September 30, 1988. The following is a summary, by functional organization, of major CM activities during this period:

CONSTRUCTION OPERATIONS: Continued construction management (CM) services for 21 contracts; monitoring of utilities relocations; and submittal reviews. Continued coordination for traffic control plans and street closures for 5 contracts. Continued coordination of MOS-1 inspections with LADOT and processing of Master Agreement Work invoices. Coordinated gas meter relocation for A610/A115. Obtained the following for AMTRAK Machine Shop: Temporary Certificate of Occupancy and the following permits: Grading, Plumbing, Electrical, Heating-A/C, Pressure Vessel and Sewer Connection. Implemented notification to R.E.'s for out of service street lights. Reviewed scope of work and proposals for asbestos abatement and hydrocarbon removal in Union Station and coordinated with ongoing airborne asbestos monitoring in A135 and A145. Inspected asbestos abatement in A135 Boiler Room and Platform Utility Tunnel and other hazardous materials within Baggage Room Relocation area in Union Station, A135. Coordinated abandonment of underground tanks in A112 and A145. Continued preparation of site closure and assessments for fuel contaminated soils in 4 contracts, including drilling and soil/water testing. Continued monitoring for groundwater and water quality in 5 contracts, Ballona Creek, and Los Angeles River. Responded to Report of Violation for Water Quality Discharge Limits of the NPDES Permit. Continued review of Contractor's monitoring for wastewater discharges and noise emissions at 4 contract sites. Continued compilation of LA River data from monitoring recorders for District and LA County Replenishment District. Coordinated vibration investigation at A145, McDonald's Restaurant. Conducted noise monitoring of pile drilling on A165 and developed abatement measures for compliance. Checked control points at Santa Fe (A112). Checked elevation of Tutor-Salibas' bench mark at Macy and Alameda. Surveyed horizontal and vertical location of abandoned gas well casing at Ducommun Street (A130). Monitored instruments and building settlement marks at Civic Center Station (A141). Laid out a portion of the 5th/Hill Station. Monitored instruments/building settlement marks and surveyed location of instruments from 6th and Hill to 7th and Grand (A146). Monitored instruments and settlement marks at 7th/Flower Station (A165). Checked contractor's control points and performed vertical as-built survey in AR Tunnel (A171). Monitored elevation of water in MacArthur Park Lake. Monitored instruments and settlement marks at Wilshire/Alvarado Station. Checked contractor's control points (A175). Ran control traverse and established control point on 6th Street Bridge. Surveyed location of geological boreholes at A146. Surveyed elevation of electrical manholes in yard storage area (A610/A115).



LOS ANGELES METRO RAIL

PDCD

CONTRACT PERFORMANCE REPORT

PERIOD SEPTEMBER 1988

PROJECT CONTROLS: Processed Change Requests as follows: 8 for A112; 3 for A130; 2 for A145; 1 for A165; 1 for A175; 1 for A610/A115 and 1 for A620. Processed Change Notices as follows: 1 for A112; 1 for A130; 2 for A135; 6 for A141, 1 for A145; 1 for A146; 3 for A165; 1 for A171; 2 for A175; 3 for A610/A115; 6 for A620 and 1 for A640. Processed Change Orders as follows: 7 for A112; 2 for A130; 8 for A135; 4 for A141; 3 for A144; 5 for A145; 3 for A146; 1 for A165; 1 for A175; 1 for A610/A115 and 1 for A740. Processed the following executed Change Orders through TRACS: 8 for A112; 7 for A130; 2 for A141; 1 for A144; 6 for A145; 2 for A146; and 3 for A610/A115. Processed Claims: 145-PC-087, 145-PC-090, 145-PC-094 and 145-PC-100. Processed Monthly Payment Estimates for 15 Contracts. Loaded Contracts A612 and A615 into TRACS. Completed Estimates for: 135-CR-004, Baggage Handling Facility; 135-CR-003, Mail Baggage & Express Ramp; and 175-CR-018, Wilshire Alvarado - West end interface. Prepared Cost Evaluation for review of Value Engineering Proposals for Contracts A130, A135, A141 and A175 Concrete Mix W/C Ratio change. Prepared ROM Estimates for: Unsuitable foundation removal at Wilshire Alvarado Station A175; cut off and Cap Oil Well Yard Lead A130. Revised Estimate for 740-CR-006 Fan Dampers. Reviewed Contractors Proposals and prepared estimates for 175-CR-023, Wilshire Alvarado Fence; 141-CR-065, Acceleration Union Station Access Shaft; and reviewed miscellaneous Resident Engineer ROM estimates on Change Requests.

CONTRACTS/PROCUREMENT: After receipt of District approvals, issued remaining AWP-5 amendments for one associate subcontract and one other subcontract. Assisted District in evaluating bids for A710, Escalators/Elevators and A630, Traction Power Substation Equipment. Placed advertisement in local newspaper and issued Request for Proposals pertaining to additional Associate Subcontractor(s). Proposals were received September 21, 1988. Issued purchase order for generator set for the Water Treatment Facility. Processed Requests for Quotes and issued purchase orders for six personal computers as approved by the District. Issued purchase order for outside reproduction as approved by the District.

ENGINEERING SERVICES: Distributed final report on first A146 compaction grouting test section. Coordinated with RTD, MRTC, and Converse Consultants to determine where to drill new exploratory borings in structures overlying the A146 AL alignment. Trained Converse Consultants' Project Geologist in PDCD method classifying soil strata in Contract A146. Began intensive study of strut load build-up in Civic Center Station, Contract A141. Coordinated with MRTC in finalizing plans for geotechnical instrumentation over the A146 Test Section No. 2. Coordinated the interaction between the A171 Contractor and Hilton Hotel to assure monitoring during passage of the AR tunnel. Made A130 site visit to evaluate contractor's explanation of his observation well and freeway settlement marker locations. Completed geologic field mapping and monitoring of the magnetometer surveys for the A171 AR tunnel. Checked and confirmed subgrade at north end of Civic Center Station as competent foundation bearing material.



LOS ANGELES METRO RAIL

PDCD

CONTRACT PERFORMANCE REPORT

PERIOD SEPTEMBER 1988

During this period 283 Contractor submittals were processed as follows:

For Contract A112✓	- Approved - 10; Approved-as-Noted - 18; Rejected - 6; For Record Only - 1.
For Contract A121✓	- Approved - 2; Rejected - 2; For Record Only - 11.
For Contract A130	- Approved - 4; Approved-as-Noted - 4; Rejected - 3.
For Contract A135	- Approved - 1; Approved-as-Noted - 9; Rejected - 6; For Record Only - 2.
For Contract A135BH	- Approved-as-Noted - 1; Rejected - 2.
For Contract A141	- Approved - 6; Approved-as-Noted - 7; Rejected - 1.
For Contract A145	- Approved - 11; Approved-as-Noted - 13; Rejected - 3.
For Contract A146	- Approved - 2; Approved-as-Noted - 1; Rejected - 1.
For Contract A165	- Approved - 8; Approved-as-Noted - 18; Rejected - 8; For Record Only - 2.
For Contract A171	- Approved - 7; Approved-as-Noted - 13; Rejected - 3.
For Contract A175	- Approved - 1; Approved-as-Noted - 3; Rejected - 1; For Record Only - 5.
For Contract A610/A115	- Approved - 20; Approved-as-Noted - 8; Rejected - 9; For Record Only - 2.
For Contract A615	- Approved - 1.
For Contract A616	- Approved - 6.
For Contract A620	- Approved - 14; Approved-as-Noted - 13; Rejected - 2; For Record Only - 1.
For Contract A640	- ; Rejected - 2.
For Contract A732✓	- ; Approved-as-Noted - 1.
For Contract A740	- ; Approved-as-Noted - 5.
For Contract A745	- Approved-as-Noted - 3.
TOTAL	93 117 49 24 = 283

SAFETY/SECURITY: Performed daily site safety, health and security surveillances and prepared written reports for the 9 construction projects. Coordinated activities of the Systemwide Security Guard Service. Coordinated the activities of the Systemwide Clean-up Service subcontractor. Reviewed and approved the interim safety representative for the A130 Project.

MISCELLANEOUS: For Community Relations - Coordinated community notifications and traffic control assistance for A141, A145 and A165. Disseminated special notices for street closures. Coordinated and resolved traffic concerns for tenants along Hill St. affected by A145 traffic access plans; and for tenants in the 7th and Flower area affected by A165 traffic access plans. Provided assistance to A145, A146 and A165 tenants for problems caused by delayed street reopenings, property damage, noise, telephone disruptions and vibrations. Provided assistance to A175 regarding problems caused by dust, and improvements to pedestrian walkway on Alvarado St. Provided assistance to A130 tenants regarding lighting/access concerns. Assisted RTD in coordinating a



LOS ANGELES METRO RAIL

PDCD

CONTRACT PERFORMANCE REPORT

PERIOD SEPTEMBER 1988

Community Awareness Meeting on September 13, 1988 for A130 tenants. **For Equal Opportunity** - Monitored E.O. reporting requirements for 17 Contracts. Processed penalty assessments for late reporting of the Monthly Employment Utilization Reports for 5 contracts. Continued investigation of prevailing wage violation on A175 trucking firm. Received discrimination complaint on A165 and started assessment. **For Quality Assurance/Quality Control** - Continued to conduct inspection and testing of welding on A145, A165 and A175. Completed shop fabrication inspection/test at Craftsmen Constructors, Inc. Conducted review of concrete mix design and placement of concrete in cross passages for Contract A171. Performed shop survey of Production Steel Company Inc., Gardena, California. Shop will provide steel for temporary utility bridge on Contract A130. Retested beams on Westlake Bridge to re-verify need for welding repairs. Continued to review submittals and monitor Smith-Emery testing activities. Conducted field phase of A145 audit. Participated in PacBell-DIA-RTD-PDCD joint review of PacBell hit of 8/05/88.

MANPOWER PERFORMANCE

The manpower performance for September is measured against the approved planned staffing for the 5th AWP. During September, the actual staff level was 186 vs. the planned staff level of 171. Therefore, the actual staff count for September is 15 over the planned staffing level. The staff breakdown by company was 119 for the Joint Venture firms and 67 for the Associate Subcontractors.

The September period had 192 available workhours/person. The plan provided for expenditure of 32,304 hours, including "as-required" manhours which would have generated a projected equivalent head count of 168.25 personnel at 192 hours/person. Actual hours expended were 33,771 which translates into a 175.89 equivalent head count at 192 hours/person including temporary personnel, resulting in the equivalent of 7.64 personnel over the plan.

EQUAL OPPORTUNITY (EO) PERFORMANCE

EO performance in September measured under four categories - DBE, WBE and Minority and Women Affirmative Action Was as follows:

- o Cumulative DBE participation for the Fifth Annual Work Plan through the month, measured against a total cost basis was 17.6%, 0.6% over the goal of 17%.
- o Cumulative WBE participation for the Fifth Annual Work Plan through the month, measured against a total cost basis was 4.7%, 1.7% over the goal of 3%.
- o Minority and Women Affirmative Action performance for the month exceeded the established goals of 17% and 8% by 17% and 4% respectively.



LOS ANGELES METRO RAIL

PDCD

CONTRACT PERFORMANCE REPORT

PERIOD SEPTEMBER 1988

SCHEDULE PERFORMANCE

- o CM Manuals/Procedures - During the September period, PDCD issued revised Manual Nos. 5 and 9 (Contracts/Procurement and Inspector Guidelines). To date, PDCD has issued a total of 8 revised manuals to holders of record. PDCD plans to reissue the remaining 1 manual (Manual No. 6 - Project Controls) during October.
- o Constructibility Reviews - No Constructibility Reviews were conducted during September.
- o Contractor Submittals - During this period, 229 submittals were received as per contract number as follows: A112 (27), A121 (1), A130 (19), A135 (19), A141 (11), A145 (23), A146 (3), A165 (25), A171 (13), A175 (12), A610/A115 (20), A612 (2), A615 (2), A616 (4), A620 (35), A640 (3), A732 (3), A740 (2) and A745 (5); of the 229 received this period plus the 217 carryover from August, 283 packages were processed and returned to the contractors; the balance of 163 remain in review.
- o Training Programs - During September, the following training programs were underway: SAFETY TRAINING FOR UNDERGROUND CONSTRUCTION - Training of PDCD, RTD and MRTC personnel in safety conduct during underground construction covering use of self-rescuers; fire extinguishers and other safety equipment. AMTRAK SAFETY TRAINING - Training for PDCD and RTD personnel in safety relative to working on and in the vicinity of railroad tracks and use of proper safety gear. CLAIMS TRAINING - Training for PDCD personnel in claims administration and processing including claims preparation, evaluation and record keeping. Also methods of prevention and procedure for early resolution.

COST PERFORMANCE - Fifth Annual Work Plan

- o Total incurred costs of \$1,451,000 for CM Direct Services (excluding General Condition Items) for the period were under the plan of \$1,504,000 by \$53,000. This variance results from the net effect of other Direct Costs (ODCs) being under the plan by \$69,000 and labor expenditures (total PDCD and subcontractors) being over the plan by \$16,000.
- o The September CPR indicates an estimate at completion for the 5th AWP (including General Condition Items) of \$17,625,000 which equals the budget of \$17,625,000.

GENERAL CONDITION ITEMS

General Condition Items (GCI's) expenditure of \$86,000 for the period were over the plan of \$44,000 for the period by \$42,000. This report forecasts an estimate at completion (EAC) in the 5th AWP period for GCI's of \$664,000 which equals the budget of \$664,000. Of the EAC of \$664,000, \$15,000 is unallocated to a particular expenditure.



LOS ANGELES METRO RAIL

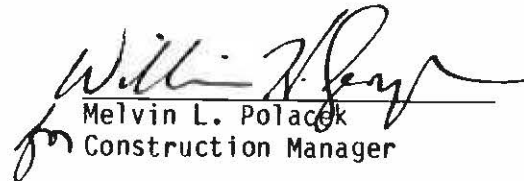
PDCD

CONTRACT PERFORMANCE REPORT

PERIOD SEPTEMBER 1988

GENERAL

- o This "Monthly Contract Performance Report" covers progress relative to PDCD's CM Services contract with the RTD. By RTD direction PDCD no longer produces the "Monthly Construction Performance Report". An equivalent document is now produced by RTD with PDCD input and is entitled the "Monthly Status Report." A copy of the RTD report is distributed to previous recipients of the PDCD report as required.
- o PDCD's Joint Venture Executive Board Meeting No. 13 is scheduled for October 31, 1988.


Melvin L. Polacek
Construction Manager



LOS ANGELES METRO RAIL

PDCD

CONTRACT PERFORMANCE REPORT

PERIOD SEPTEMBER 1988

II. MANPOWER PERFORMANCE

This CPR for the month of September compares actual manpower to the planned manpower in the approved 5th AWP. Table II-1, Page 8, illustrates planned staffing vs. actual staff and variances for September.

During September, personnel assignments/terminations included the addition of 2 Mechanical Engineers, 2 Structural Engineers, 1 Communications Engineer, 1 QA/QC Inspector (office), 1 Office Secretary, 1 Sr. Data Technician (change control), 1 Sr. Change Control Engr./Claims Analyst, 1 Resident Engineer-Systemwide, 1 Sr. Inspector, and 1 Special Chief Inspector-TBCB; and the deletion of 1 Lead Planner/Scheduler, 1 Courier/Messenger, and one Office Clerk.

For the September period, under the approved 5th AWP, the total planned staffing level (including regular and as-required classifications) is 171. The actual staff (including regular, as-required and temporary classifications) was 186 resulting in 15 over planned. The current actual staff by company for the September period is as follows:

<u>Company</u>	<u>Staff Level</u>	<u>Company</u>	<u>Staff Level</u>
The Ralph M. Parsons Company	46	Jacobs Associates	8
Dillingham Construction, Inc.	49	Jenkins, Gales & Martinez, Inc.	7
De Leuw, Cather & Company	24	Martin & Huang International	4
Better Personnel Employment Services	13	North Pacific Construction Management	4
Construction Control Services Corporation	18	Ochoa & Sillas	-
Dames & Moore	1	Randolph & Tate Associates	-
Engineering-Science, Inc.	9	WCI	3

The PDCD Manpower Chart on Page 9 illustrates planned manpower for Construction Services for the Fifth Annual Work Plan period. Actual equivalent manpower is shown for the months of July through September.

The September period had 192 available workhours/person. The plan provided for an expenditure of 32,304 hours, including "as-required" manhours, which would have generated a projected equivalent head count of 168.25 personnel @ 192 hrs/person. Actual hours expended were 33,771 which translates into an equivalent head count of 175.89 @ 192 hrs/person including temporary personnel, resulting in the equivalent of 7.64 personnel over the plan.



LOS ANGELES METRO RAIL

CONTRACT PERFORMANCE REPORT

PDCD

PERIOD SEPTEMBER 1988

TABLE II-1 CONSTRUCTION MANAGEMENT STAFF COUNT - SEPTEMBER FIFTH ANNUAL WORK PLAN

Position	Phase II Construction Services		
	Planned	Actual	Variance
Construction Manager	1	1	0
Manager, Safety and Security	1	1	0
Safety Inspectors	2	1	(1)
Manager, Quality Assurance	1	1	0
Quality Assurance Engineer	1	1	0
QA/QC Inspector	0	1	1
Secretarial/Word Processing/Clerical/Drafting/Courier	15	17	2
Labor Relations	0	0	0
Legal Counsel	0	0	0
Subtotal	<u>21</u>	<u>23</u>	<u>2</u>
Manager, Administration and Staff Support	1	1	0
Manager, Project Administration/Accounting	1	1	0
Senior Accountant	1	1	0
Senior Accounting Clerks	2	2	0
Office Manager	1	1	0
Arts Coordinator	0	0	0
Manager, Community Relations	1	1	0
Community Relations Coordinator	1	1	0
Manager, EO Administration	1	1	0
EO Administrator	1	0	(1)
Subtotal	<u>10</u>	<u>9</u>	<u>(1)</u>
DCM, Project Controls/Engineering Services	1	1	0
Manager, Project Controls	1	1	0
Technical Data Coordinator	1	1	0
Lead Cost Engineer	1	1	0
Cost Engineers	4	4	0
Lead Change Control	1	1	0
Change Control Specialist	1	1	0
Claims Proc. Spec.	1	0	(1)
Data Technician	0	1	1
Lead Planner/Scheduler	1	1	0
Planner/Schedulers	5	6	1
Lead Estimator	1	1	0
Estimators	3	2	(1)
Sr. Data Technician	1	1	0
Lead Document Control Specialist	1	1	0
Document Control Specialist	1	0	(1)
Shop Drawing Coordinator	1	1	0
Data Technician	2	2	0
File Clerk	1	2	1
Computer Support	0	0	0
Subtotal	<u>28</u>	<u>28</u>	<u>0</u>
Manager, Contracts/Procurement	1	1	0
Sr. Contract Administrators	2	2	0
Subtotal	<u>3</u>	<u>3</u>	<u>0</u>

Position	Phase II Construction Services		
	Planned ⁽¹⁾	Actual ⁽²⁾	Variance
*Manager, Engineering Services/Systems Integration	1	1	0
Drafting Technicians	2	1	(1)
Lead Architect	1	1	0
Lead Electrical Engineer	1	1	0
Electrical Engineer	1	1	0
Lead Engineer, Geotech. Section	1	1	0
Engineers, Geotech. Section	6	6	0
Lead Mechanical Engineer	1	1	0
Mechanical Engineer	1	2	1
Lead Structural Engineer	1	1	0
Sr. Struct./Struct. Engineers	3	5	2
Lead Systems Engineer	1	1	0
Systems Engineer	2	2	0
Subtotal	<u>22</u>	<u>24</u>	<u>2</u>
DCM, Operations	1	1	0
Manager, General Services	1	1	0
Lead Utilities Engineer	1	1	0
Utility Engineer	1	0	(1)
Chief of Surveys	1	1	0
Party Chief	1	1	0
Instrument Person	2	2	0
Rod Person	1	2	1
Lead Environmental Engineer	1	1	0
Environmental Specialists	3	8	5
Engineer	1	1	0
Engineering Technician/Coordinator	1	1	0
Resident Engineers	9	9	0
Chief Inspectors	8	9	1
Sr. Inspectors/Inspectors	26	30	4
Office Engineers	11	11	0
Field Secretaries/Clerical	11	12	1
Manager, Systemwide Construction	1	1	0
Office Engineer	1	1	0
Resident Engineers	4	4	0
Secretary	1	2	1
Inspector	0	0	0
Subtotal	<u>87</u>	<u>99</u>	<u>12</u>
Totals	<u>171</u>	<u>186</u>	<u>15</u>

NOTES:

- (1) The "Planned" staff count is taken directly from the RTD approved PDCD 5th ANP. It is the planned staff count for the reported month and includes both "Regular" and "As-required" classifications.
- (2) The "Actual" staff count is the total actual staff count by Job Position. Included are regular, as-required and temporary staff.



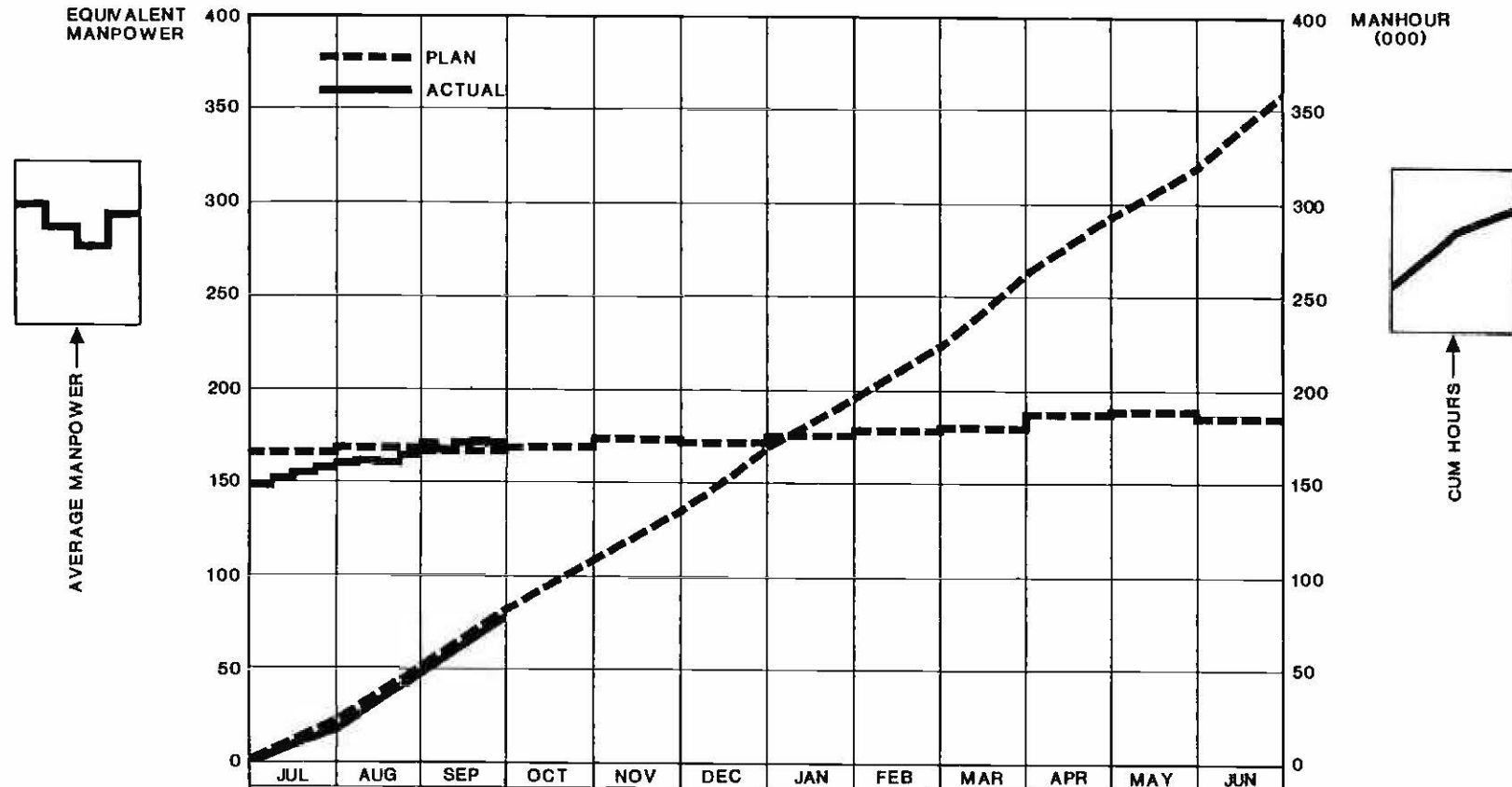
LOS ANGELES METRO RAIL

PDCD

CONTRACT PERFORMANCE REPORT

FIFTH ANNUAL WORK PLAN


PERIOD SEPTEMBER 1988



		1988						1989					
HOURS/MO	PLAN	25,720	27,360	32,304	27,360	25,200	33,120	27,104	29,120	36,520	30,160	30,400	35,952
	ACTUAL	23,616	26,406*	33,771									
HOURS/CUM	PLAN	25,720	53,080	85,384	112,744	137,944	171,064	198,168	227,288	263,808	293,968	324,368	360,320
	ACTUAL	23,616	50,022*	83,793									
EQ MANPOWER	PLAN	169	171	168	171	175	173	178	182	183	189	190	187
	ACTUAL	155	165	176									
AVAILABLE WORK HOURS		152	160	192	160	144	192	152	160	200	160	160	192

* PRIOR PERIOD ADJUSTMENT

PDCD MANPOWER



SECTION III
EQUAL OPPORTUNITY
PERFORMANCE

MTA LIBRARY



LOS ANGELES METRO RAIL

PDCD

CONTRACT PERFORMANCE REPORT

PERIOD SEPTEMBER 1988

III. EQUAL OPPORTUNITY PERFORMANCE

DBE Participation

The monthly DBE participation for the Fifth Annual Work Plan for September, measured on the basis of total cost was 15.9%, 1.1% below the 17% goal. The cumulative percentage for the Fifth Annual Work Plan was 17.6%, 0.6% above the 17% goal (Figure 1).

WBE Participation

The monthly WBE participation for the Fifth Annual Work Plan for September, measured on the basis of total cost was 4.7%, 1.7% above the 3% goal. The cumulative percentage for the Fifth Annual Work Plan was 4.7%, 1.7% above the 3% goal (Figure 2).

Affirmative Action Analysis

The Affirmative Action Analyses for minorities and women, as indicated in Figures 3 and 4, exceeds the established goals of 17% for minorities, and 8% for women by 17% and 4% respectively.



LOS ANGELES METRO RAIL

PDCD

CONTRACT PERFORMANCE REPORT

FIFTH ANNUAL WORK PLAN

PERIOD SEPTEMBER 1988

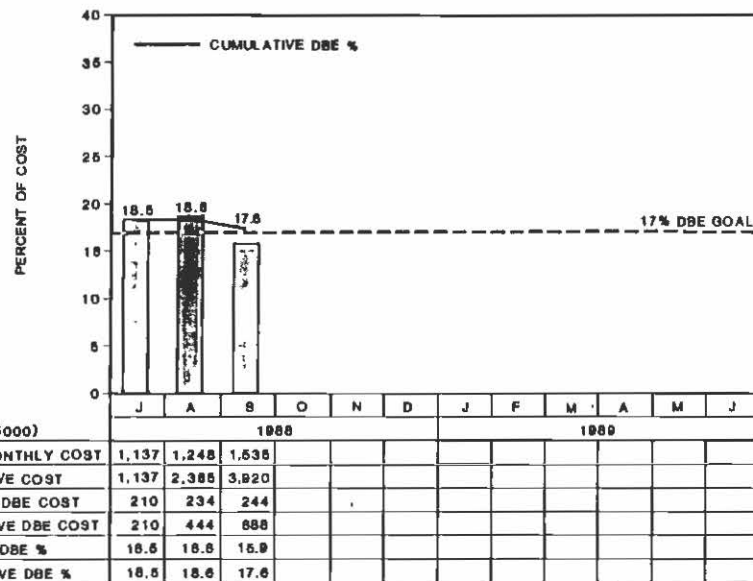


FIGURE 1 - DBE ANALYSIS

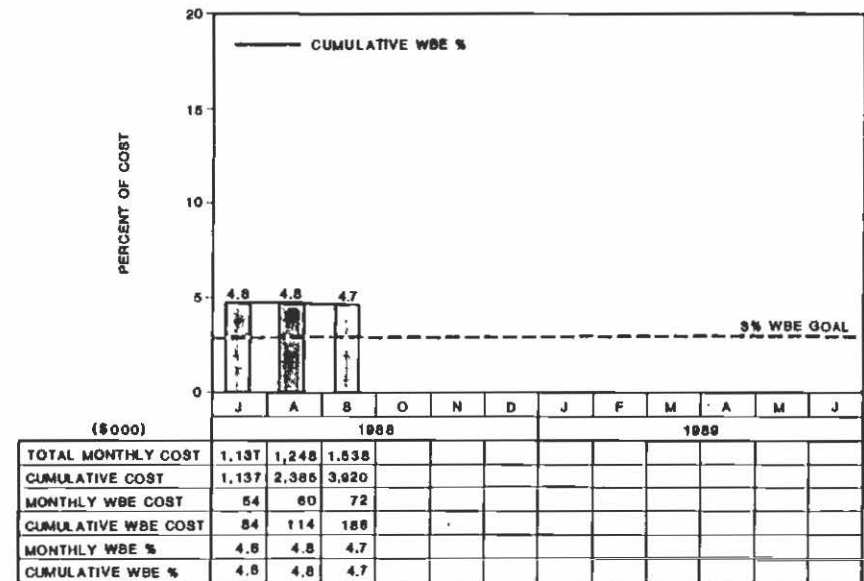


FIGURE 2 - WBE ANALYSIS

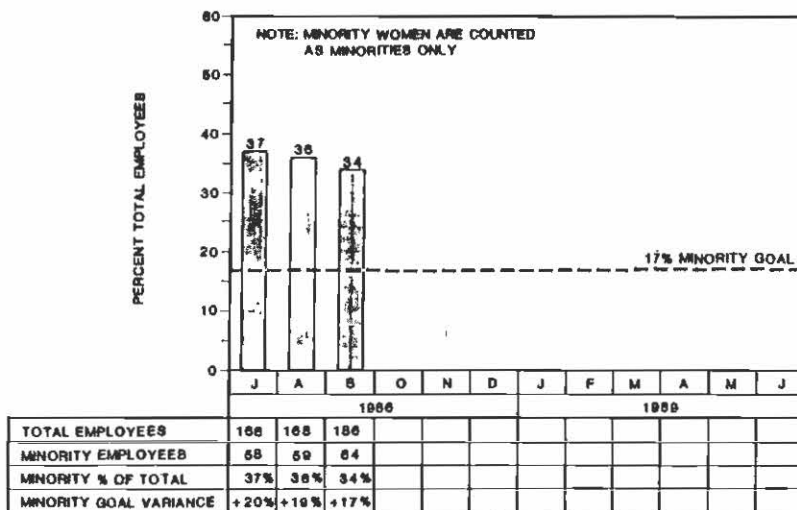


FIGURE 3 - MINORITY AFFIRMATIVE ACTION ANALYSIS

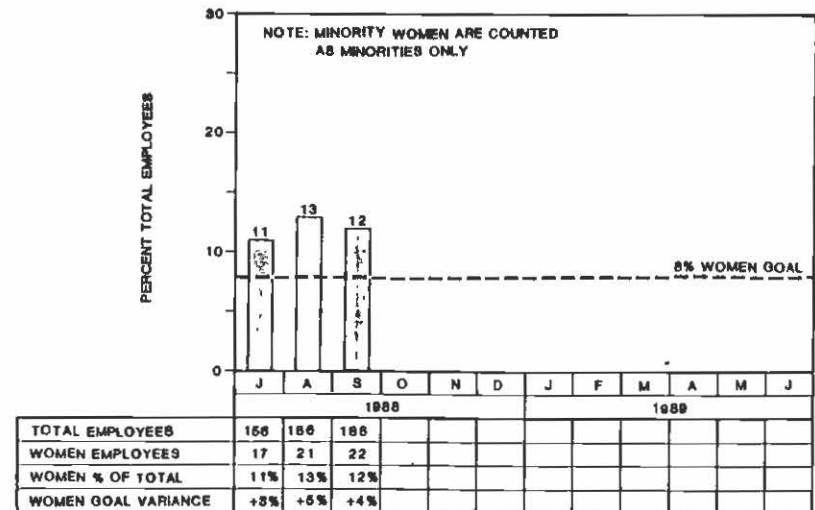



FIGURE 4 - WOMEN AFFIRMATIVE ACTION ANALYSIS

Parsons-Dillingham-De Leuw, Cather



SECTION IV
SCHEDULE PERFORMANCE



LOS ANGELES METRO RAIL

PDCD

CONTRACT PERFORMANCE REPORT

PERIOD SEPTEMBER 1988

IV. SCHEDULE PERFORMANCE

CONTRACTOR SUBMITTALS - During this period, 229 submittals were received from the Construction Contractors and 217 were carried-over from August. 283 packages were processed (approved, approved-as-noted, rejected and reviewed for record only) and returned to the Contractors as shown in the following tabulation. The balance (163) are still under review.

<u>Contracts</u>	<u>Carryover From August</u>	<u>No. of Submittals Received in Sept.</u>	<u>Submittals Processed Within 30 Days</u>	<u>Submittals Processed In Over 30 Days</u>	<u>Carryover to October</u>
A112	22 ✓	27	28	7	14
A121	15 ✓	1	14	1	1
A130	5	19	10	1	13
A135	10	16	16	2	8
A135 BH	0	3	3	0	0
A141	9	11	13	1	6
A145/A145A	26	23	24	3	22
A146	3	3	4	0	2
A165	27	25	32	4	16
A171	19	13	21	2	9
A175	8	12	7	3	10
A610/A115	33	20	31	8	14
A612	2	2	0	0	4
A615	0	2	1	0	1
A616	4	4	0	0	2
A620	25	35	24	6	30
A640	3	3	2	0	4
A732	0 ✓	3	1	0	2
A740	4	2	4	1	1
A745	2	5	3	0	4
Total	217	229	238	45	163

Manuals and Procedures - During the September period, PDCD issued Manual Nos. 5 and 9 (Contracts/Procurement and Inspector Guidelines) revised. To date, PDCD has issued a total of 8 revised manuals to holders of record. PDCD plans to reissue the remaining 1 manual during October (Manual No. 6 - Project Controls).



LOS ANGELES METRO RAIL

PDCD

CONTRACT PERFORMANCE REPORT

PERIOD SEPTEMBER 1988

Construction Package Reviews - No Constructibility Reviews were conducted during September.

Training Programs

The following training programs for PDCD, RTD, MRTC and Subcontractor personnel were underway during the September period:

- A. SAFETY TRAINING FOR UNDERGROUND CONSTRUCTION - Training of PDCD, RTD and MRTC personnel in safety conduct during underground construction covering use of self-rescuers; fire extinguishers and other safety equipment.
- B. AMTRAK SAFETY TRAINING - Training for PDCD and RTD personnel in safety relative to working on and in the vicinity of railroad tracks and use of proper safety gear.
- C. CLAIMS TRAINING - Training for PDCD personnel in claims administration and processing. Included are claims document preparation, evaluation and record keeping. Also reasons for claims, methods of prevention and procedure for early resolution.



LOS ANGELES METRO RAIL

PDCD

CONTRACT PERFORMANCE REPORT

PERIOD SEPTEMBER 1988

V. COST PERFORMANCE

FIFTH ANNUAL WORK PLAN

Total incurred costs of \$1,451,000 (Page 17) for CM Direct Services (without General Condition Items) for the period were under the plan of \$1,504,000 by \$53,000. This variance results from the net effect of Other Direct Costs (ODCs) being under the plan by \$69,000 and Labor expenditures (total PDCD and subcontractors) being over the plan by \$16,000.

The September CPR forecasts (Page 23) an estimate at completion of \$17,625,000 which equals the Fifth Annual Work Plan of \$17,625,000. Extracting the General Condition Items and reporting them separately, the September CPR forecasts a CM Direct Services estimate at completion of \$16,961,000, which equals the budget of \$16,961,000.

GENERAL CONDITION ITEMS

General Condition Items (GCI's) expenditure of \$86,000 for the period were over the plan of \$44,000 for the period by \$12,000. This report forecasts an estimate at completion (EAC) in the 5th AWP period for GCI's of \$664,000, equaling the budget of \$664,000. Of this total EAC, \$15,000 is unallocated to a particular expenditure.

LABOR COSTS

The average hourly labor rate, including burdens and fees, experienced for the period was \$40.76/hr. compared to a plan rate of \$42.12/hr., resulting in a difference of \$1.36 per hour.

The variances can be summarized into two categories:

STAFFING VARIANCE

7.64 equivalent staff under plan @ 192
hours at \$42.12/hour =

IMPACT ON SEPTEMBER COSTS

\$ 61,800



LOS ANGELES METRO RAIL

PDCD

CONTRACT PERFORMANCE REPORT

PERIOD SEPTEMBER 1988

RATE VARIANCE

175.89 actual staff equivalent @ 192 hours
@ \$1.36/hour = (45,800)

SEPTEMBER COST VARIANCE TO PLAN \$ 16,000

MANHOUR EXPENDITURE

The hours expended for the period were 33,771 versus a plan of 32,304. The 1,467 manhours variance for the period is calculated as follows:

7.64 equivalent staff under plan @ 192
hours/period in plan = 1,467 hours

SEPTEMBER MANHOUR VARIANCE TO PLAN 1,467 hours

OTHER DIRECT COSTS

Other Direct Costs (ODCs) were under the plan for the period by a net of \$69,000 as follows:

DESCRIPTION	CURRENT PERIOD DOLLARS			CUMULATIVE DOLLARS		
	BUDGET	ACTUAL	VARIANCE	BUDGET	ACTUAL	VARIANCE
(1)Field Office Expenses	60,127	47,512	-12,615	177,881	139,824	- 38,057
(2)Office Equipment	14,552	28,117	13,565	43,656	61,635	17,979
(3)Travel & Relocation	26,350	- 3,778	-30,128	79,050	18,139	- 60,911
(4)Vehicles & Maintenance	6,225	3,127	- 3,098	44,341	20,949	- 23,392
(5)Reproduction	7,174	9,130	1,956	18,832	14,805	- 4,027
(6)Telephone/Telex	8,873	5,604	- 3,269	23,291	15,819	- 7,472
(7)Computer Operation Support	3,242	500	- 2,742	9,726	2,500	- 7,226
(8)Gross Receipt Tax	8,277	15,000	6,723	22,507	21,000	- 1,507
(9)Field Equipment	8,456	-30,927	-39,383	25,368	7,073	- 18,295
S/T ODC's	143,276	74,285	<u>-68,991</u>	444,652	301,744	-142,908



LOS ANGELES METRO RAIL

PDCD

CONTRACT PERFORMANCE REPORT

PERIOD SEPTEMBER 1988

NOTES

- (1) Field Office Expenses - underexpenditure due to underrun in equipment maintenance and supplies.
- (2) Office Equipment - overexpenditure due to the purchase of field and central office computers.
- (3) Travel and Relocation - adjustment of prior period accruals.
- (4) Vehicles & Maintenance - underexpenditure due to lower than planned maintenance costs.
- (5) Reproduction - overexpenditure due to higher than planned reproduction requirements.
- (6) Telephone and Telex - underexpenditure due to lower than planned use of telephones.
- (7) Computer Operation Support - underexpenditure due to lower than planned DMCS.
- (8) Gross Receipt Tax - overexpenditure due to correction of prior accruals.
- (9) Field Equipment - correction of accruals for signs and barricades which have been moved to GCI's.



LOS ANGELES METRO RAIL

PDCD

CONTRACT PERFORMANCE REPORT

PERIOD SEPTEMBER 1988

CM COST PERFORMANCE - SEPTEMBER 1988 FIFTH ANNUAL WORK PLAN CONSTRUCTION

(\$000)

	PLANNED	ACTUAL	VARIANCE	%
PDCD				
LABOR, BURDENS, FEE				
CUMULATIVE THROUGH AUGUST	\$ 1,458	\$ 1,320 **	\$ (138)	-9.47%
CURRENT MONTH	873	895	22	1.51%
CUMULATIVE THROUGH SEPTEMBER	\$ 2,331	\$ 2,215	\$ (116)	-4.98%
TRAVEL AND ODC'S				
CUMULATIVE THROUGH AUGUST	\$ 301	\$ 227	\$ (74)	-24.58%
CURRENT MONTH	143	74	(69)	-48.25%
CUMULATIVE THROUGH SEPTEMBER	\$ 444	\$ 301	\$ (143)	-32.21%
SUBCONTRACTORS				
CUMULATIVE THROUGH AUGUST	\$ 797	\$ 755	\$ (42)	-5.27%
CURRENT MONTH	488	482	(6)	-1.23%
CUMULATIVE THROUGH SEPTEMBER	\$ 1,285	\$ 1,237	\$ (48)	-3.74%
SUBTOTAL CM DIRECT SERVICES				
CUMULATIVE THROUGH AUGUST	\$ 2,556	\$ 2,302	\$ (254)	-9.94%
CURRENT MONTH	1,504	1,451	(53)	-3.52%
CUMULATIVE THROUGH SEPTEMBER	\$ 4,060	\$ 3,753	\$ (307)	-7.56%
GENERAL CONDITION ITEMS				
CUMULATIVE THROUGH AUGUST	\$ 105	\$ 80	\$ (25)	-23.81%
CURRENT MONTH	44	86	42	95.45%
CUMULATIVE THROUGH SEPTEMBER	\$ 149	166	\$ 17	11.41%
TOTAL CM SERVICES				
CUMULATIVE THROUGH AUGUST	\$ 2,661	\$ 2,382	\$ (279)	-10.48%
CURRENT MONTH	1,548	1,537	(11)*	-0.71%
CUMULATIVE THROUGH SEPTEMBER	\$ 4,209	\$ 3,919	\$ (290)	-6.89%
HOURS				
CUMULATIVE THROUGH AUGUST	53,080 hrs	50,022 hrs **	(3,058)hrs	-5.76%
CURRENT MONTH	32,304	33,771	1,467	4.54%
CUMULATIVE THROUGH SEPTEMBER	85,384 hrs	83,793 hrs	(1,591)hrs	-1.86%

*OFF BY 1 DUE TO ROUNDING
**PRIOR PERIOD ADJUSTMENT



LOS ANGELES METRO RAIL

PDCD

CONTRACT PERFORMANCE REPORT

PERIOD SEPTEMBER 1988

FIFTH ANNUAL WORK PLAN PDCD MANHOURS BY FUNCTIONAL DEPARTMENT

PAGE 1 TO 3

DESCRIPTION (MHS)		1988												1989											
		JULY	AUGUST	SEPTEMBER	OCTOBER	NOVEMBER	DECEMBER	JANUARY	FEBRUARY	MARCH	APRIL	MAY	JUNE	TOTALS											
MANHOURS BY FUNCTIONAL DEPARTMENT																									
A Project Management and Secretarial	Plan	current	2,736	2,880	3,456	2,880	2,592	3,456	2,736	2,880	3,600	2,880	2,880	3,456	36,432										
		cumulative	2,736	5,616	9,072	11,952	14,544	18,000	20,736	23,616	27,216	30,096	32,976	36,432											
	Actual	current	3,052	3,037	3,625																				
		cumulative	3,052	6,089	9,714																				
C Facilities Construction Management	Plan	current	9,400	10,160	11,984	10,320	9,536	12,368	10,320	11,120	14,200	11,840	12,160	14,208	137,616										
		cumulative	9,400	19,560	31,544	41,864	51,400	63,768	74,088	85,208	99,408	111,248	123,408	137,616											
	Actual	current	9,697	10,632	13,430																				
		cumulative	9,697	20,329	33,767																				
E Systemwide Construction Management	Plan	current	1,304	1,200	1,584	1,200	1,392	1,616	1,456	1,360	1,840	1,520	1,520	1,776	17,768										
		cumulative	1,304	2,504	4,088	5,288	6,680	8,296	9,752	11,112	12,952	14,472	15,992	17,768											
	Actual	current	895	1,062	1,378																				
		cumulative	895	1,957	3,335																				
F General Services	Plan	current	1,984	2,080	2,464	1,920	1,744	2,272	1,832	1,920	2,360	1,920	1,920	2,272	24,688										
		cumulative	1,984	4,064	6,528	8,448	10,192	12,464	14,296	16,216	18,576	20,496	22,416	24,688											
	Actual	current	2,083	2,408	3,642																				
		cumulative	2,083	4,491	8,133																				
K Project Controls	Plan	current	4,184	4,480	5,264	4,560	4,032	5,456	4,336	4,560	5,840	4,720	4,720	5,616	57,768										
		cumulative	4,184	8,664	13,928	18,488	22,520	27,976	32,312	36,872	42,712	47,432	52,152	57,768											
	Actual	current	2,882	3,203	3,498																				
		cumulative	2,882	6,085	9,583																				
L Contracts/Procurement	Plan	current	456	480	576	480	432	576	456	480	600	480	480	576	6,072										
		cumulative	456	936	1,512	1,992	2,424	3,000	3,456	3,936	4,536	5,016	5,496	6,072											
	Actual	current	445	471	509																				
		cumulative	445	916	1,425																				
M Engineering Services/ Systems Integration	Plan	current	2,976	2,960	3,536	2,960	2,672	3,536	3,128	3,600	4,280	3,520	3,520	3,968	40,656										
		cumulative	2,976	5,936	9,472	12,432	15,104	18,640	21,768	25,368	29,648	33,168	36,688	40,656											
	Actual	current	2,440	3,048	4,247																				
		cumulative	2,440	5,489	9,735																				
N Community Relations	Plan	current	304	320	384	320	288	384	304	320	400	320	320	384	4,048										
		cumulative	304	624	1,008	1,328	1,616	2,000	2,304	2,624	3,024	3,344	3,664	4,048											
	Actual	current	293	290	361																				
		cumulative	293	583	944																				



LOS ANGELES METRO RAIL

PDCD

CONTRACT PERFORMANCE REPORT

PERIOD SEPTEMBER 1988

FIFTH ANNUAL WORK PLAN PDCD MANHOURS BY FUNCTIONAL DEPARTMENT

PAGE 2 TO 3

DESCRIPTION (MHS)			1988						1989						TOTALS
			JULY	AUGUST	SEPTEMBER	OCTOBER	NOVEMBER	DECEMBER	JANUARY	FEBRUARY	MARCH	APRIL	MAY	JUNE	
P Safety and Security	Plan	current	436	480	576	480	432	576	456	480	690	480	480	576	6,072
		cumulative	436	936	1,512	1,992	2,424	3,000	3,456	3,936	4,336	5,016	5,496	6,072	
	Actual	current	272	320	352										
		cumulative	272	592	944										
B Quality Assurance	Plan	current	304	480	384	320	208	464	224	400	320	240	240	464	4,048
		cumulative	304	784	1,168	1,488	1,696	2,160	2,384	2,784	3,104	3,344	3,584	4,048	
	Actual	current	240	263	441										
		cumulative	240	503	944										
R Project Administration	Plan	current	912	960	1,152	960	864	1,152	912	960	1,200	960	960	1,312	12,304
		cumulative	912	1,872	3,024	3,984	4,848	6,000	6,912	7,872	9,072	10,032	10,992	12,304	
	Actual	current	752	798	1,327										
		cumulative	752	1,550	2,877										
S ED Administration	Plan	current	304	320	384	320	288	384	304	320	400	320	320	384	4,048
		cumulative	304	624	1,008	1,328	1,616	2,000	2,304	2,624	3,024	3,344	3,664	4,048	
	Actual	current	152	152	152										
		cumulative	152	304	456										
T Labor Relations	Plan	current	0	0	0	0	0	0	0	0	160	0	160	0	320
		cumulative	0	0	0	0	0	0	0	0	160	160	320	320	
	Actual	current	0	0	9										
		cumulative	0	0	9										
U Legal Counsel	Plan	current	0	0	0	0	0	160	0	160	0	160	0	160	640
		cumulative	0	0	0	0	0	160	160	320	320	480	480	640	
	Actual	current	0	0	0										
		cumulative	0	0	0										
Subtotal (HOURS)	Plan	current	25,320	26,800	31,744	26,720	24,480	32,400	26,464	28,560	33,800	29,360	29,680	35,152	352,480
		cumulative	25,320	52,120	83,864	110,584	135,064	167,464	193,928	222,488	258,288	287,648	317,328	352,480	
	Actual	current	23,203	25,684	32,979										
		cumulative	23,203	48,887	81,866										81,866



LOS ANGELES METRO RAIL

PDCD

CONTRACT PERFORMANCE REPORT

PERIOD SEPTEMBER 1988

FIFTH ANNUAL WORK PLAN PDCD MANHOURS BY FUNCTIONAL DEPARTMENT

PAGE 3 TO 3

			1988										1989		
DESCRIPTION (MHS)			JULY	AUGUST	SEPTEMBER	OCTOBER	NOVEMBER	DECEMBER	JANUARY	FEBRUARY	MARCH	APRIL	MAY	JUNE	TOTALS
Other Direct Labor															
R. M. Parsons															
K Project Controls	Plan	current	0	0	0	80	80	80	0	80	0	80	0	80	480
		cumulative	0	0	0	80	160	240	240	320	320	400	400	480	
	Actual	current	0	582	8										
		cumulative	0	582	590										
M Engineering Services/ Systems Integration	Plan	current	160	320	320	320	320	320	320	160	160	160	160	2880	
		cumulative	160	480	800	1,120	1,440	1,760	2,080	2,240	2,400	2,560	2,720	2,880	
	Actual	current	341	(189)	507										
		cumulative	341	152	659										
Q Quality Assurance	Plan	current	0	0	0	0	80	80	80	80	80	80	80	640	
		cumulative	0	0	0	0	80	160	240	320	400	480	560	640	
	Actual	current	0	0											
		cumulative	0	0											
R Administration	Plan	current	0	0	0	0	0	0	0	0	0	0	0	0	
		cumulative	0	0	0	0	0	0	0	0	0	0	0	0	
	Actual	current	0	83	80										
		cumulative	0	83	163										
Billingham Construction															
K Project Controls	Plan	current	0	0	0	0	0	0	0	0	160	160	160	640	
		cumulative	0	0	0	0	0	0	0	0	160	320	480	640	
	Actual	current	0	0	0										
		cumulative	0	0	0										
M Engineering Services/ Systems Integration	Plan	current	0	0	0	0	0	0	0	0	160	160	160	640	
		cumulative	0	0	0	0	0	0	0	0	160	320	480	640	
	Actual	current	72	152	148										
		cumulative	72	224	372										
DeLew, Cather															
F General Services	Plan	current	80	80	80	80	80	80	80	80	80	80	80	960	
		cumulative	80	160	240	320	400	480	560	640	720	800	880	960	
	Actual	current	0	0	0										
		cumulative	0	0	0										
M Engineering Services/ Systems Integration	Plan	current	160	160	160	160	160	160	160	160	240	240	240	2240	
		cumulative	160	320	480	640	800	960	1,120	1,280	1,520	1,760	2,000	2,240	
	Actual	current	0	94	49										
		cumulative	0	94	143										
Subtotal	Plan	current	400	560	560	640	720	720	640	560	880	960	880	8,480	
		cumulative	400	960	1,520	2,160	2,880	3,600	4,240	4,800	5,680	6,640	7,520	8,480	
	Actual	current	413	722	792										
		cumulative	413	1,135	1,927										
TOTAL DIRECT LABOR HOURS	Plan	current	23,720	27,360	32,304	27,360	23,200	33,120	27,104	29,120	36,680	30,320	30,560	360,960	
		cumulative	23,720	53,080	85,384	112,744	137,944	171,064	198,168	227,288	263,968	294,288	324,848	360,960	
	Actual	current	23,616	26,406	33,771									57,387	
		cumulative	23,616	50,022	83,793										
* prior period adjustment															



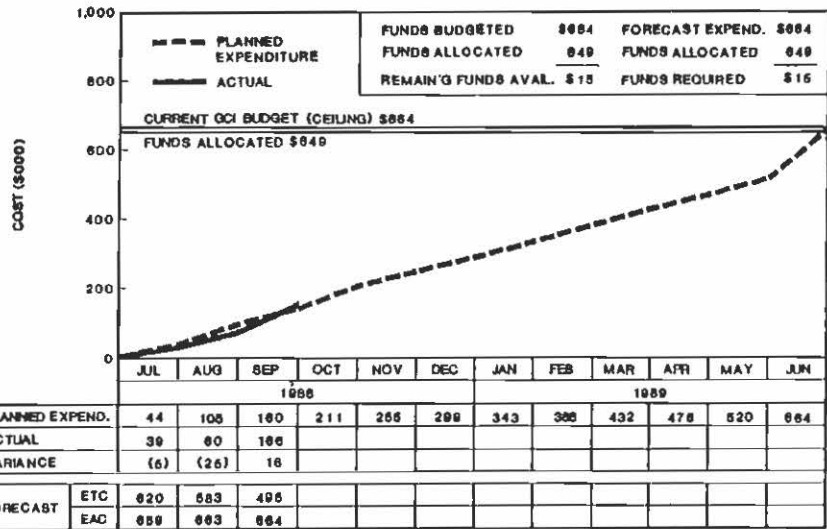
LOS ANGELES METRO RAIL

PDCD

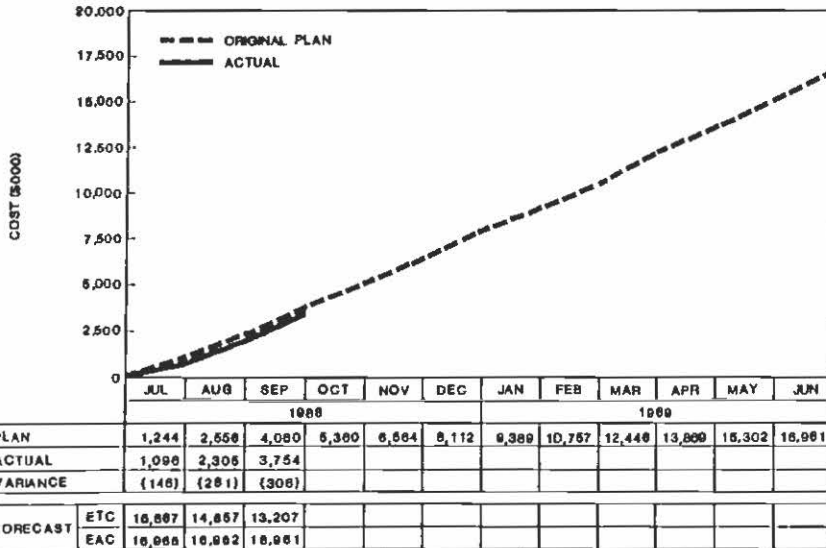
CONTRACT PERFORMANCE REPORT

PERIOD SEPTEMBER 1988

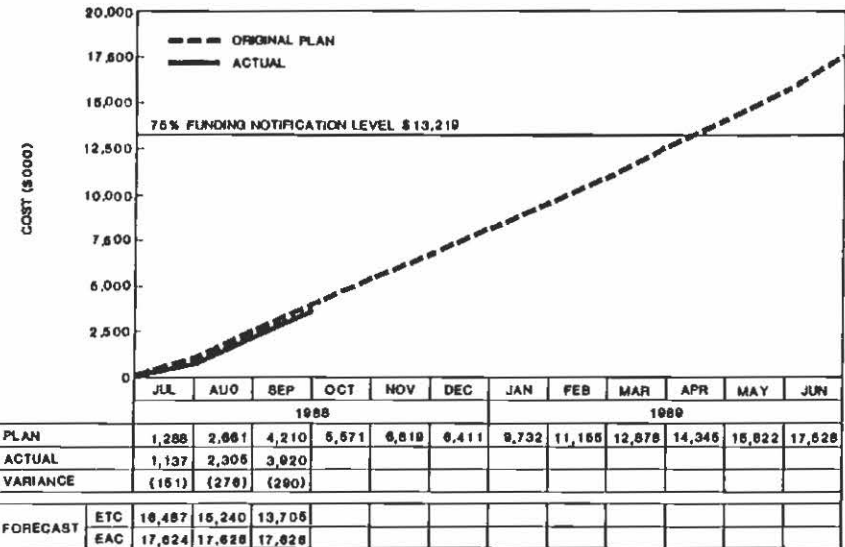
FIFTH ANNUAL WORK PLAN



GENERAL CONDITION ITEMS CUMULATIVE COST PERFORMANCE



CM DIRECT SERVICES CUMULATIVE COST PERFORMANCE



TOTAL CM SERVICES (INCLUDING G.C.I.'s) CUMULATIVE COST PERFORMANCE



LOS ANGELES METRO RAIL

PDCD

CONTRACT PERFORMANCE REPORT

PERIOD SEPTEMBER 1988

PDCD CM SERVICES - 5TH ANNUAL WORK PLAN COST REPORT FOR MONTH ENDING SEP 30, 1988 REPORT SUMMARIZED BY RESPONSIBILITY CONSTRUCTION GENERAL CONDITION ITEMS

RESPONSIBILITY CD-DESCRIPTION	CURRENT PERIOD DOLLARS			CUMULATIVE DOLLARS			ESTIMATE TO COMPL	AT COMPLETION DOLLARS		
	BUDGET	ACTUAL	VAR.	BUDGET	ACTUAL	VARIANCE		BUDGET	ESTIMATE	VARIANCE
B GUARD SERVICES	7,750	1,366	-6,384	23,250	13,273	-9,977	69,750	93,000	83,023	-9,977
D FIELD OFFICE TRAILERS	0	0	0	17,000	0	-17,000	17,000	34,000	17,000	-17,000
E CLEAN-UP OF FIELD SITES	0	1,000	1,000	0	1,000	1,000	59,000	0	60,000	60,000
F STANDBY GENERATOR FOR WTF	0	20,000	20,000	0	20,000	20,000	0	0	20,000	20,000
G SIGNS AND BARRICADES	0	30,000	30,000	0	30,000	30,000	9,000	0	39,000	39,000
X CONSTRUCTION PHOTO	3,525	3,426	-99	10,575	11,920	1,345	31,725	42,300	43,645	1,345
Y TESTING PROGRAM	32,917	30,000	-2,917	98,751	90,000	-8,751	296,249	395,000	386,249	-8,751
S/T ALLOCATED	44,192	85,792	41,600	149,576	166,193	16,617	482,724	564,300	648,917	84,617
Z UNALLOCATED	0	0	0	0	0	0	15,000	100,000	15,000	-85,000
S/T GEN. COND. ITEMS	44,192	85,792	41,600	149,576	166,193	16,617	497,724	664,300	663,917	-383



LOS ANGELES METRO RAIL

PDCD

CONTRACT PERFORMANCE REPORT

PERIOD SEPTEMBER 1988

PDCD CM SERVICES - 5TH ANNUAL WORK PLAN COST REPORT FOR MONTH ENDING SEP 30, 1988 REPORT SUMMARIZED BY RESPONSIBILITY CONSTRUCTION

RESPONSIBILITY CD-DESCRIPTION	CURRENT PERIOD DOLLARS			CUMULATIVE DOLLARS			ESTIMATE TO COMPL	AT COMPLETION DOLLARS		
	BUDGET	ACTUAL	VAR.	BUDGET	ACTUAL	VARIANCE		BUDGET	ESTIMATE	VARIANCE
A PROJECT MANAGEMENT	99,519	92,824	-6,695	261,238	245,797	-15,441	794,458	1,049,100	1,040,255	-8,845
C FAC. CONSTRUCTION	449,967	471,432	21,465	1,183,918	1,209,040	16,122	4,107,640	5,131,561	5,307,680	176,119
E SYSTEMWIDE CONST	56,499	53,990	-2,509	145,217	129,847	-15,370	561,438	605,480	691,285	85,805
F GENERAL SERVICES	104,790	142,228	37,438	278,990	321,726	42,738	937,596	1,084,962	1,259,324	174,362
F PROJECT CONTROLS	232,027	138,552	-93,475	614,795	422,648	-192,147	1,844,243	2,581,921	2,266,891	-315,030
L PROCUREMENT	25,597	22,526	-3,071	67,193	63,213	-3,980	204,866	269,840	268,079	-1,761
M ENG. SVCS./SYST. INTEGR.	186,069	248,165	62,096	497,415	554,123	56,708	1,590,770	2,108,035	2,144,893	36,858
N COMMUNITY RELATIONS	14,617	13,978	-639	38,370	35,466	-2,904	115,718	154,087	151,184	-2,903
F SAFETY	26,569	16,688	-9,881	69,744	44,408	-25,336	190,299	280,081	234,707	-45,374
Q QUALITY ASSURANCE	19,586	22,418	2,832	57,909	50,690	-7,219	230,462	232,452	281,152	48,700
R PROJECT ADMIN.	40,468	61,489	21,021	106,228	119,671	13,443	334,079	436,598	453,750	17,152
S EQUAL OPPORTUNITY	17,764	6,703	-11,061	46,630	20,110	-26,520	140,630	187,260	160,740	-26,520
T LABOR RELATIONS	0	590	590	0	590	590	21,405	21,405	21,995	590
U LEGAL	0	0	0	0	3,262	3,262	40,000	80,000	43,262	-36,738
S/T LABOR-BRDN & OH	1,273,472	1,291,583	18,111	3,367,647	3,211,593	-156,054	11,113,604	14,222,782	14,325,197	102,415
1 FIELD OFFICE EXPENSES	60,127	47,512	-12,615	177,881	139,824	-38,057	561,219	718,100	701,043	-17,057
2 OFFICE EQUIPMENT	14,552	28,117	13,565	43,656	61,635	17,979	138,244	181,900	199,879	17,979
3 TRAVEL & RELOCATION	26,350	-3,778	-30,128	79,050	18,139	-60,911	253,950	325,000	272,089	-52,911
4 VEHICLES & MAINT.	6,225	3,127	-3,098	44,341	20,949	-23,392	68,259	93,600	89,208	-4,392
5 REPRODUCTION	7,174	9,130	1,956	18,832	14,805	-4,027	56,768	75,600	71,573	-4,027
7 TELEPHONE & TELEX	8,873	5,604	-3,269	23,291	15,819	-7,472	70,209	93,500	86,028	-7,472
8 COMPUTER OPERATION SUPPT.	3,242	500	-2,742	9,726	2,500	-7,226	29,174	38,900	31,674	-7,226
9 GROSS RECEIPT TAX	8,277	15,000	6,723	22,507	21,000	-1,507	71,723	94,230	92,723	-1,507
A FIELD EQUIPMENT	8,456	-30,927	-39,383	25,368	7,073	-18,295	80,332	105,700	87,405	-18,295
S/T ODC'S	143,276	74,285	-68,991	444,652	301,744	-142,908	1,329,878	1,726,530	1,631,622	-94,908
W PDCD FEE	50,000	50,000	0	150,000	150,000	0	445,000	595,000	595,000	0
X S/C FEE	37,185	34,873	-2,312	97,939	90,406	-7,533	318,827	416,766	409,233	-7,533
S/T FEES	87,185	84,873	-2,312	247,939	240,406	-7,533	763,827	1,011,766	1,004,233	-7,533
S/T CM DIRECT SVCS	1,503,933	1,450,741	-53,192	4,060,238	3,753,743	-306,495	13,207,309	16,961,078	16,961,052	-26
S/T GEN. COND. ITEMS	44,192	85,792	41,600	149,576	166,193	16,617	497,724	664,300	663,917	-383
TOTAL CM SERVICES	1,548,125	1,536,533	-11,592	4,209,814	3,919,936	-289,878	13,705,033	17,625,378	17,624,969	-409

PERCENT OF BUDGET EXPENDED = 22%

NEGATIVE VARIANCE INDICATES UNDERRUN



LOS ANGELES METRO RAIL

PDCD

CONTRACT PERFORMANCE REPORT

PERIOD SEPTEMBER 1988

VI. ADDITIONAL ACTIVITIES PERFORMED IN SEPTEMBER

The following activities performed by the CM functional organization are in addition to the activities presented in other sections of this report.

A. ADMINISTRATION AND ACCOUNTING

- (1) Continued to assist the Resident Engineers in the supply of administrative material and the assignment/orientation of new field personnel at the field offices.
- (2) Continued processing of personnel (acquisition and termination).
- (3) Coordinated PDCD's JVEB meeting No. 12 held on 8/30/88.

B. Quality Assurance

- (1) Continued to conduct inspection and testing of welding on A145, A165 and A175.
- (2) Completed shop fabrication inspection/test at Craftsmen Constructors, Inc.
- (3) Conducted review of concrete mix design and placement of concrete in cross passages for Contract A171.
- (4) Performed shop survey of Production Steel Company Inc., Gardena, California. Shop will provide steel for temporary utility bridge on Contract A130.
- (5) Retested beams on Westlake Bridge to re-verify need for welding repairs.
- (6) Continued to review submittals and monitor Smith-Emery testing activities.
- (7) Conducted field phase of A145 audit.
- (8) Participated in PacBell-DIA-RTD-PDCD joint review of PacBell hit of 8/05/88.

C. Equal Opportunity Administration

- (1) Monitored E.O. reporting requirements for Contract Nos. A112, A121, A130, A135, A141, A145, A146, A165, A171, A175, A610/A115, A612, A616, A620, A640, A740 and A745.
- (2) Processed penalty assessments for late submittal of the Monthly Employment Utilization Reports for Contracts A112, A135, A141, A145 and A165.
- (3) Continued investigation of prevailing wage violation on A175 trucking firm.
- (4) Received discrimination complaint on A165 and started assessment.



LOS ANGELES METRO RAIL

PDCD

CONTRACT PERFORMANCE REPORT

PERIOD SEPTEMBER 1988

D. Contracts and Procurement

- (1) After receipt of District approvals, issued remaining AWP-5 amendments for one associate subcontract and one other subcontract.
- (2) Assisted District in evaluating bids for A710, Escalators/Elevators and A630, Traction Power Substation Equipment.
- (3) Placed advertisement in local newspaper and issued Request for Proposals pertaining to additional Associate Subcontractor(s). Proposals were received September 21, 1988.
- (4) Issued purchase order for generator set for the Water Treatment Facility.
- (5) Processed Requests for Quotes and issued purchase orders for six personal computers as approved by the District.
- (6) Issued purchase order for outside reproduction as approved by the District.

E. Community Relations

- (1) Coordinated community notifications and traffic control assistance for A141, A145 and A165. Disseminated special notices for street closures.
- (2) Coordinated and resolved traffic concerns for tenants along Hill St. affected by A145 traffic access plans; and for tenants in the 7th and Flower area affected by A165 traffic access plans.
- (3) Provided assistance to A145, A146 and A165 tenants for problems caused by delayed street reopenings, property damage, noise, telephone disruptions and vibrations.
- (4) Provided assistance to A175 regarding problems caused by dust, and improvements to pedestrian walkway on Alvarado St.
- (5) Provided assistance to A130 tenants regarding lighting/access concerns.
- (6) Assisted RTD in coordinating a Community Awareness Meeting on September 13, 1988 for A130 tenants.

F. Safety and Security

- (1) Performed daily site safety, health and security surveillances and prepared written reports for the A112, A130, A135, A141, A145, A165, A171, A175 and A610/A115 construction projects.
- (2) Coordinated activities of the Systemwide Security Guard Service.
- (3) Coordinated the activities of the Systemwide Clean-up Service subcontractor.
- (4) Reviewed and approved the interim safety representative for the A130 Project.



LOS ANGELES METRO RAIL

PDCD

CONTRACT PERFORMANCE REPORT

PERIOD SEPTEMBER 1988

G. Construction Operations

- (1) Continued construction management (CM) services for Contracts A112✓, A121✓ (contract close out), A130, A135, A141, A143, A144, A145/A145A, A146, A165, A171, A175, A610/A115, A612, A615, A616, A620, A640, A732✓, A740, A745; monitoring of utilities relocations, and submittal reviews.
- (2) Continued coordination for traffic control plans and street closures for A141, A145, A146, A165 and A175.
- (3) Continued coordination of MOS-1 inspections with LADOT and processing of Master Agreement work invoices.
- (4) Coordinated gas meter relocation for A610/A115.
- (5) Obtained the following for AMTRAK Machine Shop: Temporary Certificate of Occupancy and the following permits: Grading, Plumbing, Electrical, Heating-A/C, Pressure Vessel and Sewer Connection.
- (6) Implemented notificaton to R.E.'s for out of service street lights.
- (7) Reviewed scope of work and proposals for asbestos abatement and hydrocarbon removal in Union Station and coordinated with ongoing airborne asbestos monitoring in A135 and A145.
- (8) Inspected asbestos abatement in A135 Boiler Room and Platform Utility Tunnel and other hazardous materials within Baggage Room Relocation area in Union Station, A135.
- (9) Coordinated abandonment of underground tanks in A112✓ and A145.
- (10) Continued preparation of site closure and assessments for fuel contaminated soils in A610/A115, A121✓, A145 and A175, including drilling and soil/water testing.
- (11) Continued monitoring for groundwater and water quality in A171, A175, Ballona Creek, A130, A141, A144 and Los Angeles River.
- (12) Responded to Report of Violation for Water Quality Discharge Limits of the NPDES Permit.
- (13) Continued review of Contractor's monitoring for wastewater discharges (A171 and A175) and noise emissions (especially A145, A165, A171 and A175).
- (14) Continued compilation of LA River data from monitoring recorders for District and LA County Replenishment District.
- (15) Coordinated vibration investigation at A145, MacDonald's Restaurant.
- (16) Conducted noise monitoring of piling on A165 and developed abatement measures for compliance.
- (17) Checked control points at Santa Fe (A112)✓.
- (18) Checked elevation of Tutor Salibas' bench mark at Macy and Alameda. Surveyed horizontal and vertical location of abandoned gas well casing at Ducommun Street (A130).
- (19) Monitored instruments and building settlement marks at Civic Center Station (A141).
- (20) Laid out a portion of the 5th/Hill Station.
- (21) Monitored instruments/building settlement marks and surveyed location of instruments from 6th and Hill to 7th and Grand (A146).



LOS ANGELES METRO RAIL

PDCD

CONTRACT PERFORMANCE REPORT

PERIOD SEPTEMBER 1988

- (22) Monitored instruments and settlement marks at 7th/Flower Station (A165).
- (23) Checked contractor's control points in AR Tunnel. Performed vertical as-built survey on AR Tunnel (A171).
- (24) Monitored elevation of water in MacArthur Park Lake. Monitored instruments and settlement marks at Wilshire/Alvarado Station. Checked contractor's control points (A175).
- (25) Ran control traverse and established control point on 6th Street Bridge. Surveyed location of geological boreholes at A146. Surveyed elevation of electrical manholes in yard storage area (A610/A115).

H. Engineering Services

- (1) Distributed final report on first A146 compaction grouting test section.
- (2) Coordinated with RTD, MRTC and Converse Consultants to determine where to drill new exploratory borings in structures overlying the A146 AL alignment.
- (3) Trained Converse Consultants' Project Geologist in PDCD method classifying soil strata in Contract A146.
- (4) Began intensive study of strut load build-up in Civic Center Station, Contract A141.
- (5) Coordinated with MRTC in finalizing plans for geotechnical instrumentation over the A146 Test Section No. 2.
- (6) Coordinated the interaction between the A171 Contractor and Hilton Hotel to assure monitoring during passage of the AR tunnel.
- (7) Made A130 site visit to hear contractor's explanation of his observation well and freeway settlement marker locations.
- (8) Completed geologic field mapping and monitoring of the magnetometer surveys for the A171 AR tunnel.
- (9) Checked and confirmed subgrade at north end of Civic Center Station as competent foundation bearing material.
- (10) For Contract A112 - Reviewed and approved 10 Contractor submittals for heat pump data, lighting fixtures, underfloor duct, toilet partitions, standby generator disconnect switches, spandrel glass samples, tile samples, track rail layout, support channel for car and truck hoist, and field welding procedures. Approved-as-Noted 18 submittals for HVAC units access doors; sprinkler and fire protection systems product data, layouts and calculations; traction power distribution system; switchboards, panel boards, transformers, and motor control centers, lighting fixtures, truck hoist and body support details and foundations, standby generator; studs, fasteners, and expansion joints; shop generator; shop D.C. power outlets and accessories, shop running rail and crane rails, and electrical outlet boxes and plug accessories. Rejected 6 submittals for HDPE penetration, curbs for roof AC units, hardware items and curing compounds. Reviewed For Record Only 1 submittal for temporary fire protection system.



LOS ANGELES METRO RAIL

PDCD

CONTRACT PERFORMANCE REPORT

PERIOD SEPTEMBER 1988

- (11) For Contract A121[✓] - Reviewed and approved 2 Contractor submittals for schedule update. Rejected 2 submittals for schedule update. Reviewed For Record Only 11 submittals for final plumbing, counter shutter doors, O&M manuals, domestic water heater and chlorination test reports, gas test report valve chart for gas, air, cold and hot water duct work and as-built drawings for air, gas, water, waste and vents.
- (12) For Contract A130 - Reviewed and approved 4 Contractor submittals for schedule of values, PVC Certificate of Compliance, utility bridge rebar details, and concrete accessories. Approved-as-Noted 4 submittals for retaining wall rebar, utility bridge details safety program and emergency program, and schedule update.
- (13) For Contract A135 - Reviewed and approved 1 Contractor submittal for platform rebars. Approved-as-Noted 9 submittals for schedule of values, haul routes, schedule update, demolition procedures, concrete accessories, temporary facilities, safety emergency plans, and borings under railroad tracks. Rejected 6 submittals for schedule and method of demolition, concrete surface retarder, boring/monitoring wells procedures, track spikes certification, and electrical, conduit and fittings. Reviewed For Record Only 2 submittals for 30 day schedule and borings under railroad tracks.
For Contract A135BH (Baggage Handling) - Reviewed and Approved-as-Noted 1 submittal for reinforcing steel. Rejected 2 submittals for structural steel and calculations.
- (14) For Contract A141 - Reviewed and approved 6 Contractor submittals for electrical galvanized conduit, grounding and boring, tieback anchors, coal tar epoxy data, and concrete mix design. Approved-as-Noted 7 submittals for excavaton support system, temporary ramp, traffic and pedestrian plan, and internal bracing for Union Station shaft. Rejected 1 submittal for geotech strain gauge installation.
- (15) For Contract A145 - Reviewed and approved 11 Contractor submittals for temporary decking settlement reference points, welding procedures, eccentric loading of soldier piles, mill certificates for steel, pedestrian traffic control, support for wood street light, poles, lift drawings, and skid resistant gratings. Approved-as-Noted 13 submittals for haul routes, temporary decking, deletion of several soldier piles, timber lagging, utility supports, and lift drawings. Rejected 3 submittals for progress report, utility supports, and welder qualifications and procedures.
- (16) Contract A146 - Reviewed and approved 2 Contractor submittals for precast concrete cover QA program, and geotechnical instrumentaton. Approved-as-Noted 1 Contractor submittal for sump pumps. Rejected 1 submittal for schedule update.
- (17) For Contract A165 - Reviewed and approved 8 Contractor submittals for galvanized conduit and fittings, coal tar epoxy, welding procedures, ground rods, and stairs and closure wall in Barker Brothers Building schedule update. Approved-as-Noted 18 submittals for soldier piles and deck beam details and connections, Home Savings shoring plan, structural steel support for Central Bank building, closure wall footing at Barker Brothers Building, non-skid coatings, and mechanical details. Rejected 8 submittals



LOS ANGELES METRO RAIL

PDCO

CONTRACT PERFORMANCE REPORT

PERIOD SEPTEMBER 1988

- for utility and utility vault support, load cell instrumentation, pull and junction boxes, and closure wall formwork. Reviewed For Record Only 2 submittals for traffic detour and closure wall lift drawings.
- (18) For Contract A171 - Reviewed and approved 7 Contractor submittals for precast concrete cover QA program, schedule reports, HDPE seam welding method and material and installer certification, wet standpipe system, air duct system, and concrete admixture. Approved-as-Noted 13 submittals for access bridge on Bonnie Brae Street, floating slab elastomer pads, concrete lift drawings for cross passages, embedded conduit details, HDPE penetration and welding details, and sump pump data. Rejected 3 submittals for wet standpipe system embedded piping and valves, and air handling equipment data.
- (19) For Contract A175 - Reviewed and approved 1 Contractor submittal for relocation of a tieback. Approved-as-Noted 3 submittals for shoring system calculations, progress reports, and deck beam splice plate calculations. Rejected 1 submittal for a monthly progress report. Reviewed for Record Only 5 submittals for clarification of structural and architectural drawing details related to CN-011.
- (20) For Contract A610/A115 - Reviewed and approved 20 Contractor submittals for demolition procedures certificates of compliance for piped utility materials, galvanized conduit and accessories, area drains, gutter drains, catch basins, and frames and grates rail test reports, tie plate data, storm drains installation details, catalog data for bonding jumpers, fire hydrant details, back flow preventer installation details, certificates of compliance and mill test reports for rail anchors and anchor bolts, gas pipe corrosion protection and product data, catalog data for air valves, and valve boxes, cathodic protection connections, and trackwork details. Approved-as-Noted 8 submittals for retaining wall rebar details, domestic water and fire line plans, pipeline seal and insulator catalog cuts, traffic control for sewer connections, special track details, and derail details. Rejected 9 submittals for bored sanitary sewer connections, progress reports, 4" domestic water valves, and traffic control plans. Reviewed for Record Only 2 submittals for letters confirming boring methods will not be used for sanitary sewer connections.
- (21) For Contract A615 - Reviewed and approved 1 Contractor submittal for an initial activities plan.
- (22) For Contract A616 - Reviewed and approved 6 Contractor submittals for rail fasteners assembly details, revision to program plan, and test reports for prefatigue tests, hardness tests and vertical load tests.
- (23) For Contract A620 - Reviewed and approved 14 Contractor submittals for manufacturing plan, train stop layout data, track circuit loop material, EMC test plan, space parts list format, yard panel face details, special tool list, equipment room layout, system design approach, insulated joint requirements, yard preliminary design review rack layout details, EMC control plan and AF track circuit report, and disconnect switch data. Approved-as-Noted 13 submittals for bar chart schedule, yard control circuits, junction box data, track circuit design, power distribution, bungalow layouts, microprocessor application data, yard track plans, fiber optic cable installation procedure, control panel component data. Rejected 2 submittals for vehicle interface details, and conduit and fittings. Reviewed for Record Only 1 submittal for inspection procedure for train control rooms.



LOS ANGELES METRO RAIL

PDCD

CONTRACT PERFORMANCE REPORT

PERIOD SEPTEMBER 1988

- (24) For Contract A640 - Reviewed and rejected 2 Contractor submittals for bar chart schedules.
- (25) For Contract A732✓ - Reviewed and Approved-as-Noted 1 submittal for wheel truing machine parts and installation layout details.
- (26) For Contract A740 - Reviewed and Approved-as-Noted 5 submittals for updated schedules, impeller stress analysis, and impeller blade/hub design properties.
- (27) For Contract A745 - Reviewed and Approved-as-Noted 3 submittals for progress reports and bar chart schedules.

I. Project Controls

- (1) Processed Change Requests: 112-CR-068✓, 112-CR-069✓, 112-CR-070✓, 112-CR-071✓, 112-CR-072, 112-CR-073✓, 112-CR-074✓, 112-CR-075✓, 130-CR-008, 130-CR-011, 113-CR-014, 145-CR-035, 145-CR-044D, 145-CR-083, 145-CR-084, 145-CR-085, 145-CR-086, 145-CR-087, 145-CR-088, 145-CR-089, 165-CR-028, 175-CR-030, 610-CR-029 and 620-CR-016.
- (2) Processed Change Notices: 112-CN-004A✓, 130-CN-001, 135-CN-001, 135-CN-003, 141-CN-036, 141-CN-038, 141-CN-010, 141-CN-008, 141-CN-048, 141-CN-049, 145-CN-029, 146-CN-005, 165-CN-008, 165-CN-009, 165-CN-010, 171-CN-008, 175-CN-010, 175-CN-011, 610-CN-013, 610-CN-017, 610-CN-018, 620-CN-009, 620-CN-011, 620-CN-012, 620-CN-012, 620-CN-013, 620-CN-014 and 640-CN-001.
- (3) Processed Change Orders: 112-CO-031✓, 112-CO-032✓, 112-CO-033✓, 112-CO-034✓, 112-CO-035✓, 112-CO-036✓, 112-CO-037✓, 130-CO-001C, 130-CO-003, 135-CO-001D, 135-CO-001E, 135-CO-002, 135-CO-002A, 135-CO-002B, 135-CO-002C, 135-CO-003, 135-CO-004, 141-CO-010K, 141-CO-014A, 141-CO-017B, 141-CO-019, 144-CO-001, 144-CO-002, 144-CO-010L, 145-CO-001, 145-CO-016B, 145-CO-043, 145-CO-050, 145-CO-054, 146-CO-005, 146-CO-013A, 146-CO-015, 165-CO-008, 175-CO-016, 610-CO-005 and 740-CO-001.
- (4) Processed through TRACS, executed Change Orders: 112-CO-007✓, 112-CO-011✓, 112-CO-015, 112-CO-031✓, 112-CO-032✓, 112-CO-034✓, 112-CO-035✓, 112-CO-037✓, 130-CO-001D, 130-CO-002, 130-CO-002A, 130-CO-002B, 130-CO-002C, 130-CO-002D, 130-CO-002E, 141-CO-010L, 141-CO-020, 144-CO-001, 145-CO-043, 145-CO-045, 145-CO-048, 145-CO-050, 145-CO-053, 145-CO-054, 146-CO-005, 146-CO-014, 610-CO-006, 610-CO-014A and 610-CO-015.
- (5) Processed Claims: 145-PC-087, 145-PC-090, 145-PC-094 and 145-PC-100.
- (6) Processed Monthly Payment Estimates for 15 Contracts: A112✓, A121✓, A130, A135, A141, A145, A165, A171, A175, A610/A115, A616, A620, A640, A740 and A745.
- (7) Loaded Contracts A612 and A615 into TRACS.
- (8) Completed Estimates for: 135-CR-004, Baggage Handling Facility; 135-CR-003, Mail Baggage & Express Ramp; and 175-CR-018, Wilshire Alvarado - West end interface.



LOS ANGELES METRO RAIL

PDCD

CONTRACT PERFORMANCE REPORT

PERIOD SEPTEMBER 1988

- (9) Prepared Cost Evaluation for review of Value Engineering Proposals for Contract A130, A135, A141 and A175 Concrete Mix W/C Ratio change.
- (10) Prepared ROM Estimates for: Unsuitable foundation removal at Wilshire Alvarado Station A175; cut off and Cap Oil Well Yard Lead A130.
- (11) Revised Estimate for 740-CR-006 Fan Dampers.
- (12) Reviewed Contractors Proposals and prepared estimates for 175-CR-023, Wilshire Alvarado Fence; 141-CR-065, Acceleration Union Station Access Shaft; and reviewed miscellaneous Resident Engineer ROM estimates on Change Requests.

J. CM Meetings in September 1988

<u>Date</u>	<u>Agency/Company</u>	<u>General Subject</u>
August 29	Atkinson	A145 Misplaced Soldier Piles
August 31	Atkinson	A145 Cap Walers Interference
August 31	RTD	LRT Requirements for A167
September 1	LADOT	Safety/Traffic Site Visit
September 2,6,16,30	PacBell & DIA	Joint Review of PacBell Hit of 8/05/88
September 2,9,21,28	RTD	Schedule Action Plans
September 6	RTD/Contractor	West End Interface w/Cut Cover Scope of Work - 175-CR-018
September 6,13,20,26	LADOT	MOS-1 Weekly Field Meeting
September 6	MRTC, RTD	Galvanizing of Electrical Conduit/Accessories
September 7,8	RTD/Contractor	Wilshire Alvarado Fence - 175-CR-023
September 7,21	RTD	Biweekly Program Controls
September 7	RTD, BAH, MRTC, LAFD, LACOFD, LAPD, LASD, RTD Police	F/LS Safety, F/LS Security
September 7	MRTC, RTD, Mega	A121 AC Unit Balancing
September 7	Granite	A165 Shoring/Decking Comments
September 8	MRTC, RTD	A135 Baggage Handling
September 9	RTD/Contractor	Acceleration Union Station Access Shaft Agreement on Drilling & Casing Piles - 141-CR-065
September 12	LADOT	Traffic Coordination
September 12	LACTC/RTD	CR Coordination



LOS ANGELES METRO RAIL

PDCD

CONTRACT PERFORMANCE REPORT

PERIOD SEPTEMBER 1988

<u>Date</u>	<u>Agency/Company</u>	<u>General Subject</u>
September 13	RTD	A130 Community Meeting
September 13	RTD/Contractor	Mail, Baggage Express Ramp - 135-CR-003
September 13,23,27	MRTC, RTD	A141 Strut Load Buildup
September 14	Substructure Committee	Tour Coordination
September 14,18	Contractors, SCRTD, DIA, Argonaut, LAFD	
September 14	RTD/Contractor	Project Safety Activity Mail, Baggage & Express Ramp Agreement on all but Electrical - 135-CR-003
September 14	Utilities	Monthly Substructure Meeting
September 14	RTD	Selection Committee Meeting - A750
September 14,15,30	Tutor-Saliba	A141 Geotech Instrumentation Performance
September 15	RTD & Proposers	Pre-proposal Conference
September 15	MRTC, RTD, Calif. Dept. of Oil & Gas	
September 15,21	Central City Assn.	Oil Well Abandonment Procedures - A130
September 15,22,23	Tutor-Saliba, MRTC, RTD	Retail Improvements for 7th St.
September 16,30	RTD & PacBell	A141 Strut Load Buildup
September 16	RTD/Faulker Co.	PacBell Overview Committee
September 19,20,21,28	RTD/Contractor	A165 Construction Activities Baggage Handling Facility Concrete Work - 135-CR-004
September 19	Tutor-Saliba	A141 Internal Bracing System for Shaft at Union Station
September 19	MRTC, Degenkolb	A146 Replacement of Damaged Compaction Grout Pipes
September 20	LADOT	Outstanding Submittals
September 21	Tutor-Saliba	A135 Instrumentation Exploratory Borings
September 22,26	RTD/Contractor	Wilshire Alvarado Station West Wall Interface w/Cut & Cover - 175-CR-018
September 22	MRTC	A141 Temperature Compensation Strain Gauges
September 22	MRTC	A141 Instrumentation Location Shifts to Avoid Utilities
September 26	RTD	A610 Claims Analysis
September 26	RTD	LGCA Staff Mtg.



LOS ANGELES METRO RAIL

PDCD

CONTRACT PERFORMANCE REPORT

PERIOD SEPTEMBER 1988

<u>Date</u>	<u>Agency/Company</u>	<u>General Subject</u>
September 26	RTD, LA City	A146 Tunneling Beneath Private Property
September 27	RTD & DIA	Preconstructoin Survey Committee
September 27	BAH	Close Out Procedures Discussion
September 27	Granite	A165 Geotech Instrumentation Performance
September 28	RTD/Contractor	Resequence Construction and 3rd Shield - Agreement Reached - 141-CR-069
September 28	RTD/G. Cohen	A130 Construction Activities
September 28	Master Builder	Concrete Mix Design for A171
September 29	RTD	A640 QA Requirements
September 29,30	Parsons Co.	Welding at Tri-Form Fabrication Shop
September 29	RTD/Contractor	Baggage Handling Facility Reached Agreement on Concrete Work, Quantities and Costs for Excavation, Backfill and Demolition - 135-CR-004
September 29	RTD	Criteria for Schedule Reviews

SECTION VII

**SUMMARY OF ACTIVITIES
PLANNED FOR OCTOBER**

MTA LIBRARY



LOS ANGELES METRO RAIL

CONTRACT PERFORMANCE REPORT

PDCD

PERIOD SEPTEMBER 1988

VII. SUMMARY OF ACTIVITIES PLANNED FOR OCTOBER 1988

A. Administration and Accounting

- (1) Continue to provide priority administrative and accounting assistance to construction field operations.
- (2) Continue the recruitment and termination of personnel as required.
- (3) Plan and coordinate PDCD JVEB Meeting No. 13 scheduled for 10/31/88.

B. Quality Assurance

- (1) Continue to inspect and test welding on A112[✓], A145, A165 and A175.
- (2) Continue to support resident engineers, monitor Smith-Emery activities, review contractor submittals and participate in safety certification activities.
- (3) Complete and sign off Safety Certification Conformance Checklist for Contract A121[✓]
- (4) Complete audits of A112[✓], A141, A145 and A165.
- (5) Resolve welding/fabrication problems with A145 struts being provided by Tri-Form and Cavin.
- (6) Direct Smith-Emery to provide test reports on a contract by contract basis.
- (7) Complete PacBell-DIA-RTD-PDCD joint review report.

C. Equal Opportunity Administration

- (1) Conduct contract compliance site visits, employee interviews and monitor reporting requirements for Contract Nos. A112[✓], A121[✓] (closeout reports), A130, A135, A141, A143, A144, A145, A146, A165, A171, A175, A610/A115, A612, A615, A616, A620, A640, A732, A740, and A745.

D. Contracts and Procurement

- (1) Issue Request for Quotes for computer/copy paper and other office supplies.
- (2) Complete proposal evaluations and submit recommendations for award(s) to District for additional Associate Subcontract(s).
- (3) Issue modification to laboratory testing subcontract to add chemical testing items.

E. Community Relations

- (1) Continue tenant notification on traffic access issues for A141, A145, A165 and A175.



LOS ANGELES METRO RAIL

PDCD

CONTRACT PERFORMANCE REPORT

PERIOD SEPTEMBER 1988

- (2) Continue expanded communication activities with A130, A145, A146, A165 and A175 tenants regarding ongoing and pending construction activities.
- (3) Continue implementing CR Work Plan; conduct community presentations; the dissemination of construction information; and responding to complaints and inquiries.

F. Safety and Security

- (1) Continue to monitor safety, health and security activities on all active construction sites.
- (2) Provide specialized underground safety training/indoctrination and AMTRAK activities for PDCD staff, SCRTD, MRTC and visitors.
- (3) Continue to monitor activities of the Security Guard Service.
- (4) Monitor the activities of the Site Clean-up Service subcontractor.

G. Construction Operations

- (1) Continue construction management (CM) services at Contracts A112[✓], A121[✓] (contract close out), A130, A135, A141, A143, A144, A145/A145A, A146, A165, A171, A175, A610/A115, A612, A615, A616, A620, A640, A732[✓], A740 and A745; monitoring of utilities relocations, and submittal reviews.
- (2) Continue coordination and MOS-1 inspection with LADOT.
- (3) Coordinate acquisition of storm drain connection permit for A610/A115.
- (4) Continue coordination of necessary requirements to obtain occupancy permit for AMTRAK Machine Shop.
- (5) Complete installation of water quality recording and monitoring instruments at LA River and Ballona Creek.
- (6) Continue monitoring of Ballona Creek and Los Angeles River discharges from A144, A171 and A175, and of Del Amo Bridge recorder.
- (7) Monitor removal of contaminated soil in A610/A115 and tank removal from A112[✓] and A145.
- (8) Complete Site Assessment and Closure Reports for contaminated soils in A112[✓], A145, A175 and A610/A115.
- (9) Complete tests for in-place remediation of oil contaminated soils at A610/A115.
- (10) Inspect asbestos abatement in A135 and A165 demolition areas.
- (11) Monitor for settlement (Various Stations).
- (12) Check contractor's control (Various Stations).
- (13) Monitor excavation for ground movement (A141).
- (14) Perform as-built survey on AR Tunnel (A171).
- (15) Monitor water level at MacArthur Park Lake (A175).



LOS ANGELES METRO RAIL

PDCD

CONTRACT PERFORMANCE REPORT

PERIOD SEPTEMBER 1988

H. Engineering Services

- (1) Continue to process contractors' submittals for Contracts A112, A130, A135, A135BH, A141, A145, A146, A165, A171, A175, A610/A115, A612, A615, A616, A620, A640, A732, A740 and A745.
- (2) Continue field inspection of geotechnical instrumentation activities for Contracts A141, A145, A165, A171 and A175.
- (3) Continue developing independent instrumentation data for strut load build-up on Contract A141; and evaluate contractor mitigation proposals.
- (4) Begin monitoring results of A146 Test Section No. 2.
- * (5) Perform constructibility review of A167 Stage II pre-bid (100%) documents and A135 Union Station West Entrance in-progress (60%) submittal.

I. Project Controls

- (1) Load Contracts A732 and A795 into TRACS.
- (2) Process Monthly Payment Estimates for all active contracts.
- (3) Process executed Change Orders through TRACS.
- (4) Calculate liquidated damages as required.
- (5) Prepare estimates on Change Requests as they occur.
- (6) Prepare Revision 6C to the Level III MOS-1 Schedule for transmittal to RTD as the Third Quarter Update.
- (7) Incorporate the A620 Contract into the Level III Schedule.
- (8) Complete the review of the A145 Contract Schedule Revision and incorporate the results into the Level III Schedule.
- (9) Prepare Construction Progress inputs to the Monthly Status Report produced by RTD.
- (10) Prepare schedule analysis for the weekly Construction Action Plans.

*See Page 37.



LOS ANGELES METRO RAIL

PDCD

CONTRACT PERFORMANCE REPORT

PERIOD SEPTEMBER 1988


DESIGN PACKAGE STATUS WINDOW REPORT - NEXT 30 DAYS 09-30-88 TO 10-28-88

Contract #	Description	Pkg Type	Review Code	Schedule Receipt	Received	Schedule Complete	Actual Complete	SC	Remarks
A-135	UNION STATION MODIFICATIONS WEST ENTRANCE	DWGS	IP60%		10-03-88	10-14-88			
**									
A-167	7TH/FLOWER STATION (STAGE II)	DWGS	DC100		10-03-88	10-14-88			PRE-BID REVIEW
A-167	7TH/FLOWER STATION (STAGE II)	SPEC	DC100		10-03-88	10-14-88			PRE-BID REVIEW
**									

Review Codes : LT60 - Less than 60% IP60 - In progress 60% PF85 - Prefinal 85%
 PF90 - Prefinal 90% FS100 - Final submittal 100% DC100 - Final design complete 100%
 CAR - Claims Avoidance Review CE - Check Estimate

NOTES : 1) Based on 10-01-88, MRTC Design Review Schedule

Parsons-Dillingham-De Leuw, Cather



SECTION VIII
SUBCONTRACTOR/CONSULTANT
STATUS



LOS ANGELES METRO RAIL

PDCD

CONTRACT PERFORMANCE REPORT

PERIOD SEPTEMBER 1988

VIII. SUBCONTRACTOR/CONSULTANT STATUS

The following 5th AWP Subcontract Status Report provides a current status of subcontracts awarded to the twelve associate and four consultant subcontractors. The Report shows major milestones for each subcontractor action from receipt of the requisition, execution of the document and includes an abbreviated description of the subcontract amendment issued.

Also included is the 4th AWP Subcontract Status Report. This report will continue to be included in this section until all financial transactions pertaining to the 4th AWP period are completely finalized.

FIFTH ANNUAL WORK PLAN SUBCONTRACT STATUS REPORT

SEPTEMBER 30, 1988

SUBCONTRACT NUMBER	SUBCONTRACTOR	REQUISITION	REQ FOR PROPOSAL	NEGOTIATION COMPLETE	JV APPROVAL	DATE TO SC	RETURNED FROM SC	CONSENT REQUESTED	CONSENT RECEIVED	MTE AMOUNT	DATE EXECUTED	REMARKS
1-SC-3369-1	BETTER PERSONNEL EMPLOYMENT SERVICES											
	AMEND. NO. 11	08/03/88	04/08/88	06/08/88	07/25/88	06/13/88	06/13/88	06/14/88	08/11/88	\$420,632	08/11/88	FIFTH AWP
2-SC-3369-1	CONSTRUCTION CONTROL SERVICES CORP.											
	AMEND. NO. 11	08/03/88	04/08/88	06/08/88	07/25/88	06/17/87	06/20/88	06/21/88	08/15/88	\$1,482,039	08/31/88	FIFTH AWP
3-SC-3369-1	DAMES & MOORE											
	AMEND. NO. 10	08/03/88	04/08/88	06/08/88	07/25/88	06/21/88	06/28/88	06/30/88	08/15/88	\$234,577	08/16/88	FIFTH AWP
4-SC-3369-1	ENGINEERING-SCIENCE											
	AMEND. NO. 10	08/03/88	04/08/88	06/20/88	07/25/88	07/05/88	07/15/88	07/18/88	08/12/88	\$228,002	08/15/88	FIFTH AWP
5-SC-3369-1	HAYAKAWA ASSOCIATES											
	AMEND. NO. 10	08/03/88	04/08/88	07/15/88	07/25/88	08/02/88	08/19/88	08/24/88	09/16/88	\$133,484	09/16/88	FIFTH AWP
6-SC-3369-1	JACOBS ASSOCIATES											
	AMEND. NO. 13	08/03/88	04/08/88	06/09/88	07/25/88	06/22/87	06/28/88	06/30/88	08/15/88	\$996,419	08/16/88	FIFTH AWP

**IN PROCESS



LOS ANGELES METRO RAIL

PDCD

CONTRACT PERFORMANCE REPORT

PERIOD SEPTEMBER 1988

FIFTH ANNUAL WORK PLAN SUBCONTRACT STATUS REPORT (Contd)

SEPTEMBER 30, 1988

SUBCONTRACT NUMBER	SUBCONTRACTOR	REQUISITION	REQ FOR PROPOSAL	NEGOTIATION COMPLETE	JV APPROVAL	DATE TO SC	RETURNED FROM SC	CONSENT REQUESTED	CONSENT RECEIVED	MTE AMOUNT	DATE EXECUTED	REMARKS
7-SC-3369-1	JENKINS, GALES & MARTINEZ, INC.											
	AMEND. NO. 13	08/03/88	04/08/88	06/08/88	07/25/88	07/18/88	07/29/88	07/29/88	08/23/88	\$738,465	08/23/88	FIFTH AMP
8-SC-3369-1	MARTIN & HUANG INTERNATIONAL											
	AMEND. NO. 11	08/03/88	04/08/88	06/08/88	07/25/88	07/13/88	07/18/88	07/25/88	08/18/88	\$486,299	08/18/88	FIFTH AMP
9-SC-3369-1	NORTH PACIFIC CONSTRUCTION MANAGEMENT											
	AMEND. NO. 13	08/03/88	04/08/88	06/29/88	07/25/88	07/18/88	07/29/88	08/03/88	08/23/88	\$435,803	08/23/88	FIFTH AMP
10-SC-3369-1	OCHOA & SILLAS											
	AMEND. NO. 7	08/03/88	04/08/88	06/14/88	N/A	07/19/88	07/21/88	07/25/88	08/15/88	\$79,600	08/16/88	FIFTH AMP
11-SC-3369-1	RANDOLPH & TATE ASSOCIATES											
	AMEND. NO. 7	08/03/88	04/08/88	04/10/88	N/A	07/20/88	08/08/88	08/08/88	08/18/88	\$10,000	08/18/88	FIFTH AMP
15-SC-3369-1	MUESER RUTLEDGE CONSULTING ENGINEERS (JAMES GOULD, Ph.D)											
	AMEND. NO. 6	09/23/88	N/A	06/15/88	N/A	06/21/88	06/21/88	06/23/88	08/12/88	\$20,000	08/12/88	FIFTH AMP
18-SC-3369-1	GEO GRAY/ PHOTOGRAPHY											
	AMEND. NO. 3	06/13/88	N/A	N/A	N/A	08/18/88	08/19/88	07/01/88	08/18/88	\$42,300	08/22/88	FIFTH AMP
19-SC-3369-1	WORK CENTER, INC.											
	AMEND. NO. 5	05/25/88	N/A	N/A	N/A	08/12/88	08/26/88	06/27/88	08/11/88	\$60,000	08/26/88	FIFTH AMP
21-SC-3369-1	SMITH EMERY CO.											
	AMEND. NO. 3	06/13/88	N/A	N/A	07/25/88	08/23/88	08/29/88	06/16/88	08/29/88	\$395,000	08/31/88	FIFTH AMP

**IN PROCESS

Parsons-Dillingham-De Leuw, Cather



LOS ANGELES METRO RAIL

PDCD

CONTRACT PERFORMANCE REPORT

PERIOD SEPTEMBER 1988

FIFTH ANNUAL WORK PLAN SUBCONTRACT STATUS REPORT (Contd)

SEPTEMBER 30, 1988

SUBCONTRACT NUMBER	SUBCONTRACTOR	REQUISITION	REQ FOR PROPOSAL	NEGOTIATION COMPLETE	JV APPROVAL	DATE TO SC	RETURNED FROM SC	CONSENT REQUESTED	CONSENT RECEIVED	NTE AMOUNT	DATE EXECUTED	REMARKS
22-SC-3369-1	COLEMAN SECURITY SERVICES INC.											
	AMEND. NO. 3	06/13/88	N/A	N/A	N/A	08/15/88	08/17/88	06/15/88	08/15/88	\$93,000	08/18/88	FIFTH AMP
29-SC-3369-1	SUBWAY TERMINAL BLDG (A145/146 SITE OFFICE LEASE)	N/A	N/A	N/A	N/A	N/A	N/A	06/01/88	06/02/88	\$58,910	N/A	EXER 1YR OPT
33-SC-3369-1	F.E. ENDACOTT (CONSULTING AGREEMENT)	05/16/88	N/A	N/A	N/A	06/16/88	07/05/88	07/05/88	08/16/88	\$61,000	08/16/88	FIFTH AMP
34-SC-3369-1	BASHACIYOM-DARNELL INC. (TRAFFIC STUDY)	06/27/88	04/28/88	06/28/88	N/A	06/29/88	06/30/88	07/11/88	07/11/88	\$5,000	07/25/88	
35-SC-3369-1	MARY & SON MAINTENANCE (SITE CLEAN-UP)	06/27/88	06/27/88	07/21/88	07/25/88	08/10/88	08/11/88	07/13/88	08/12/88	\$60,000	08/15/88	FIFTH AMP
36-SC-3369-1	STARLITE SAFETY SUPPLIES (DETOUR SIGNAGE MAINT.)	07/14/88	07/06/88	07/08/88	N/A	07/26/88	08/11/88	07/08/88	07/08/88	\$15,000	08/12/88	
	AMEND. NO. 1	07/14/88	N/A	N/A	N/A	09/14/88	09/21/88	08/17/88	09/13/88	\$26,300	09/22/88	\$11,300 INCREASE; EXTENSION
38-SC-3369-1	EDWARD D. GRAF (CONSULTING AGREEMENT)	08/10/88	N/A	N/A	N/A	08/12/88	08/16/88	08/10/88	09/07/88	\$50,000	09/07/88	

**IN PROCESS



LOS ANGELES METRO RAIL

POCD

CONTRACT PERFORMANCE REPORT

PERIOD SEPTEMBER 1988

FOURTH ANNUAL WORK PLAN SUBCONTRACT STATUS REPORT - FINAL

SEPTEMBER 30, 1988

SUBCONTRACT NUMBER	SUBCONTRACTOR	REQUISITION	REQ FOR PROPOSAL	NEGOTIATION COMPLETE	JV APPROVAL	DATE TO SC	RETURNED FROM SC	CONSENT REQUESTED	CONSENT RECEIVED	NTE AMOUNT	DATE EXECUTED	REMARKS
1-SC-3369-1	BETTER PERSONNEL EMPLOYMENT SERVICES											
	AMEND. NO. 9	06/05/87	04/30/87	06/09/87	06/26/87	06/16/87	06/16/87	06/18/87	07/06/87	\$304,629	07/06/87	FOURTH AMP
	CHANGE ORDER NO. 3	N/A	N/A	N/A	N/A	05/15/88	05/23/88	N/A	N/A	N/C	05/19/88	FOR CHANGE
	AMEND. NO. 10	06/02/88	N/A	N/A	N/A	06/05/88	06/05/88	06/13/88	06/21/88	\$329,088	06/22/88	ADDS FOURTH AMP FUNDS
2-SC-3369-1	CONSTRUCTION CONTROL SERVICES CORP.											
	AMEND. NO. 10	06/05/87	04/30/87	06/15/87	06/26/87	06/17/87	06/18/87	06/22/87	07/07/87	\$1,231,486	07/08/87	FOURTH AMP
3-SC-3369-1	DAMES & MOORE											
	AMEND. NO. 9	06/05/87	04/30/87	06/18/87	06/26/87	06/18/87	06/19/87	06/24/87	08/20/87	\$152,800	08/21/87	FOURTH AMP
4-SC-3369-1	ENGINEERING-SCIENCE											
	AMEND. NO. 8	06/05/87	04/30/87	06/18/87	06/26/87	06/22/87	06/24/87	06/26/87	07/21/87	\$249,590	07/22/87	FOURTH AMP
	AMEND. NO. 9	08/31/88	N/A	N/A	N/A	07/06/88	07/15/88	07/20/88	08/12/88	\$324,386	08/15/88	ADDS FOURTH AMP FUNDS
5-SC-3369-1	HAYAKAWA ASSOCIATES											
	AMEND. NO. 9	06/05/87	04/30/87	06/19/87	06/26/87	06/22/87	06/22/87	06/26/87	07/21/87	\$130,000	07/22/87	FOURTH AMP
6-SC-3369-1	JACOBS ASSOCIATES											
	AMEND. NO. 12	06/05/87	04/30/87	06/22/87	6/26/87	06/22/87	06/24/87	06/26/87	07/21/87	\$869,394	07/22/87	FOURTH AMP
7-SC-3369-1	JENKINS, GALES & MARTINEZ, INC.											
	AMEND. NO. 11	06/05/87	04/30/87	06/19/87	06/16/87	06/23/87	06/24/87	06/26/87	07/21/87	\$398,120	07/22/87	FOURTH AMP
	AMEND. NO. 12	05/23/88	N/A	N/A	N/A	05/23/88	05/23/88	05/24/88	06/27/88	\$488,010	06/27/88	ADDS FOURTH AMP FUNDS
8-SC-3369-1	MARTIN & HUANG INTER.											
	AMEND. NO. 9	06/05/87	04/30/87	06/19/87	06/16/87	06/22/87	06/22/87	06/24/87	06/15/87	\$261,695	07/16/87	FOURTH AMP
	AMEND. NO. 10	05/19/88	N/A	N/A	N/A	05/24/88	05/24/88	05/26/88	06/20/88	\$351,122	06/21/88	ADDS FOURTH AMP FUNDS
9-SC-3369-1	NORTH PACIFIC CONSTRUCTION MANAGEMENT											
	AMEND. NO. 12	06/05/87	04/30/87	06/15/87	06/16/87	06/22/87	06/22/87	06/26/87	06/21/87	\$408,742	07/22/87	FOURTH AMP
10-SC-3369-1	OCHOA & SILLAS											
	AMEND. NO. 6	06/05/87	04/30/87	07/30/87	N/A	08/12/87	08/18/87	09/08/87	09/23/87	\$69,700	09/24/87	FOURTH AMP

** IN PROCESS



LOS ANGELES METRO RAIL

CONTRACT PERFORMANCE REPORT

PDCD

PERIOD SEPTEMBER 1988

FOURTH ANNUAL WORK PLAN SUBCONTRACT STATUS REPORT - FINAL (Contd)

SEPTEMBER 30, 1988

SUBCONTRACT NUMBER	SUBCONTRACTOR	REQUISITION	REQ FOR PROPOSAL	NEGOTIATION COMPLETE	JV APPROVAL	DATE TO SC	RETURNED FROM SC	CONSENT REQUESTED	CONSENT RECEIVED	NTE AMOUNT	DATE EXECUTED	REMARKS
11-SC-3369-1	RANDOLPH & TATE ASSOC.											
	AMEND. NO. 6	06/05/87	04/30/87	06/15/87	N/A	08/04/87	08/17/87	09/08/87	09/25/87	\$10,000	09/28/87	FOURTH AMP
12-SC-3369-1	VAMIR CONSTRUCTION MANAGEMENT, INC.											
	AMEND. NO. 10	06/05/87	07/02/87	07/27/87	10/11/87	08/14/87	08/24/87	09/23/87	10/13/87	\$179,391	10/19/87	FOURTH AMP;
	CHANGE ORDER NO. 3	06/05/87	07/02/87	N/A	N/A	11/04/87	11/08/87	N/A	N/A	N/C	11/04/87	EXTENDS 2 CLASSIFICATIONS
	CHANGE ORDER NO. 4	06/05/87	07/02/87	N/A	N/A	12/15/87	01/04/88	N/A	N/A	N/C	12/15/87	EXTENDS 2 CLASSIFICATIONS
	AMEND. NO. 11	04/22/88	N/A	N/A	N/A	04/25/88	05/09/88	05/12/88	06/15/88	\$248,413	06/15/88	ADDS FOURTH AMP FUNDS
13-SC-3369-1	AL A. MATHIENS											
	AMEND. NO. 5	06/05/87	04/30/87	06/15/87	N/A	06/30/87	07/17/87	08/03/87	08/20/87	\$20,000	08/21/87	FOURTH AMP
14-SC-3369-1	RONALD HEUER, PhD											
	AMEND. NO. 4	06/05/87	04/30/87	06/16/87	N/A	06/30/87	07/15/87	09/25/87	11/12/87	\$12,000	11/16/87	FOURTH AMP
15-SC-3369-1	JAMES GOULD, Ph.D											
	AMEND. NO. 5	06/05/87	04/30/87	06/16/87	N/A	06/30/87	07/20/87	09/25/87	10/25/87	\$16,000	10/26/87	FOURTH AMP
16-SC-3369-1	W. ALEXANDER											
	AMEND. NO. 5	06/05/87	04/30/87	06/18/87	N/A	06/30/87	07/17/87	09/25/87	11/24/87	\$10,000	11/25/87	FOURTH AMP
18-SC-3369-1	GEO GRAY/ PHOTOGRAPHY											
	AMEND. NO. 2	06/20/87	N/A	N/A	N/A	08/25/87	08/25/87	07/14/87	08/11/87	\$36,000	08/25/87	FOURTH AMP
	CHANGE ORDER NO. 1	06/13/88	N/A	N/A	N/A	06/30/88	06/30/88	N/A	N/A	N/C		ADDS SERVICES
19-SC-3369-1	WORK CENTER, INC.											
	AMEND. NO. 3	06/15/87	N/A	N/A	N/A	08/14/87	08/21/87	06/30/87	08/12/87	\$40,000	08/21/87	FOURTH AMP
	AMEND. NO. 4	07/09/88	N/A	N/A	N/A	03/23/88	03/31/88	02/17/88	03/22/88	\$75,000	04/01/88	ADDS FOURTH AMP FUNDS
20-SC-3369-1	GARY L. BARTON CORP.											
	COMPLETED											
21-SC-3369-1	SMITH-EMERY CO											
	CHANGE ORDER NO. 1	06/19/87	06/30/87	N/A	N/A	11/12/87	11/13/87	N/A	N/A	\$77,500	11/12/87	FOURTH AMP (PARTIAL)
	AMEND NO. 1	11/09/87	N/A	11/21/87	**	08/23/88	08/31/88	12/24/88	08/29/88	\$186,000	08/31/88	FOURTH AMP (COMPLETE)
	CHANGE ORDER NO. 2	04/20/88	N/A	04/20/88	N/A	04/29/88	05/03/88	N/A	N/A	N/C	05/03/88	ADDS SERVICES
	AMEND. NO. 2	03/29/88	N/A	N/A	N/A	08/23/88	08/31/88	06/18/88	08/29/88	\$305,000	08/31/88	ADDS FOURTH AMP FUNDS

** IN PROCESS



LOS ANGELES METRO RAIL

PDCD

CONTRACT PERFORMANCE REPORT

PERIOD SEPTEMBER 1988

FOURTH ANNUAL WORK PLAN SUBCONTRACT STATUS REPORT - FINAL (Contd)

SEPTEMBER 30, 1988

SUBCONTRACT NUMBER	SUBCONTRACTOR	REQUISITION	REQ FOR PROPOSAL	NEGOTIATION COMPLETE	JV APPROVAL	DATE TO SC	RETURNED FROM SC	CONSENT REQUESTED	CONSENT RECEIVED	NET AMOUNT	DATE EXECUTED	REMARKS
22-SC-3369-1	COLEMAN SECURITY SERVICES INC.											
	AMEND. NO. 1	06/17/87	N/A	N/A	N/A	07/21/87	07/21/87	07/02/87	07/21/87	\$80,784	07/21/87	FOURTH AMP
	CHANGE ORDER NO. 1	02/18/88	03/09/88	03/09/88	N/A	03/16/88	03/21/88	N/A	N/A	N/C	02/25/88	ADDS SERVICES
	AMEND. NO. 2	02/18/88	N/A	N/A	N/A	06/14/88	06/15/88	06/29/88	06/06/88	\$94,619	06/24/88	ADDS FOURTH AMP FUNDS
24-SC-3369-1	KENNEDY/JENKS/CHILTON	07/21/87	06/28/87	07/16/87	N/A	07/17/87	07/20/87	07/21/88	08/13/87	\$98,265	07/23/87	
	AMEND. NO. 1	11/20/87	N/A	09/02/87	10/11/87	09/24/87	10/02/87	09/10/87	11/16/87	\$263,244	11/23/87	
26-SC-3369-1	HEATH CONSULTANTS INC. (WATER LEAK SURVEY)											
	COMPLETED											
28-SC-3369-1	FRANK M. BURKE (CONSULTING AGREEMENT)											
	COMPLETED											
29-SC-3369-1	SUBWAY TERMINAL BLDG (A-145/146 SITE OFFICE LEASE)											
30-SC-3369-1	EDWARD D. GRAF (CONSULTING AGREEMENT)											
	COMPLETED											
32-SC-3369-1	W. B. EVANS & ASSOCIATES (CONSULTING AGREEMENT)											
	COMPLETED											

** IN PROCESS

SECTION IX

**CONSTRUCTION PROGRESS
PHOTOS**

MTA LIBRARY



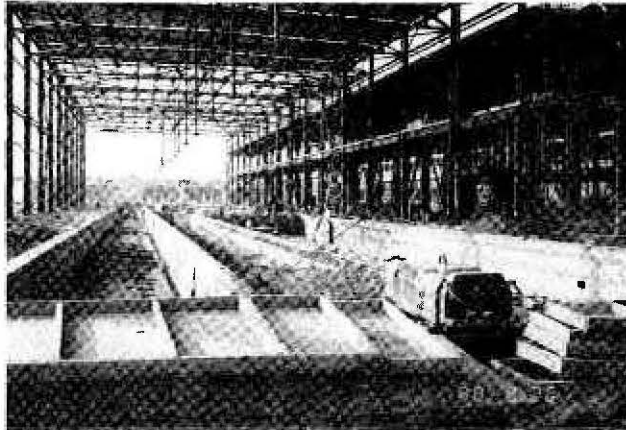
LOS ANGELES METRO RAIL

PDCD

CONTRACT PERFORMANCE REPORT

PERIOD SEPTEMBER 1988

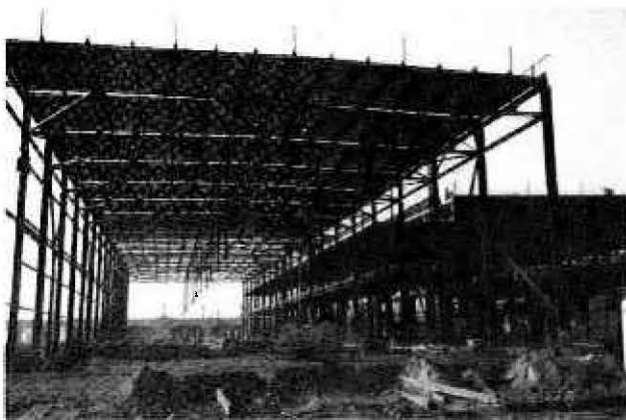
MAIN SHOP BUILDING CONTRACT A112



SERVICE AND INSPECTION PITS 1, 2 AND 3



SOUTH END OF BUILDING



VIEW OF COLUMNS B & C FROM THE NORTH END



NORTH END OF BUILDING



LOS ANGELES METRO RAIL

POCD

CONTRACT PERFORMANCE REPORT

PERIOD SEPTEMBER 1988

YARD LEADS & TRANSFER ZONE CONTRACT A130



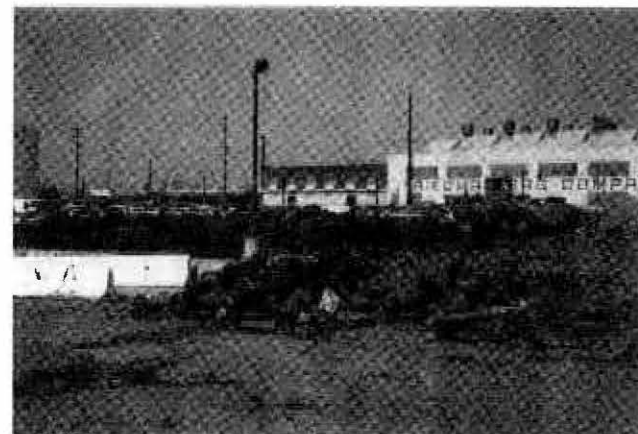
FORMING FOOTING FOR EAST RETAINING WALL,
LOOKING NORTH TOWARDS MACY ST. BRIDGE



FABRICATING REBAR CAGE FOR
UTILITY BRIDGE COLUMNS



EXPOSING BURIED CONCRETE BRIDGE ABUTMENT,
LOOKING SOUTH TOWARDS 1ST STREET BRIDGE



STRIPPING PAVEMENT AT CAR IMPOUND YARD



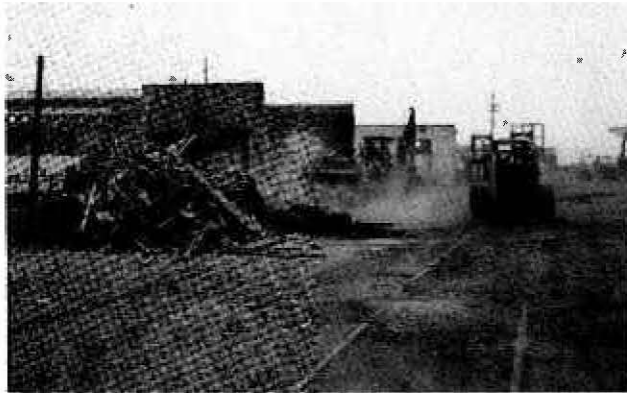
LOS ANGELES METRO RAIL

PDCD

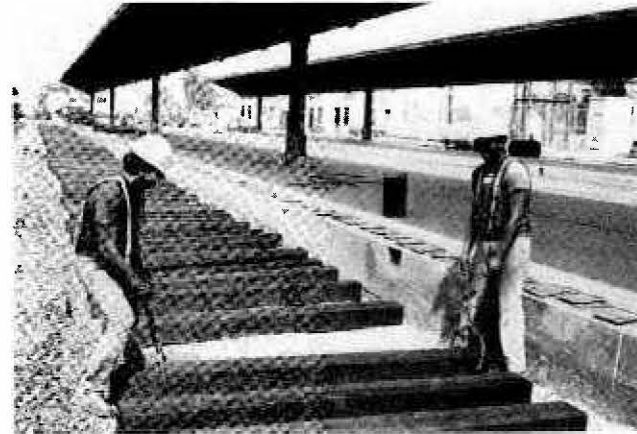
CONTRACT PERFORMANCE REPORT

PERIOD SEPTEMBER 1988

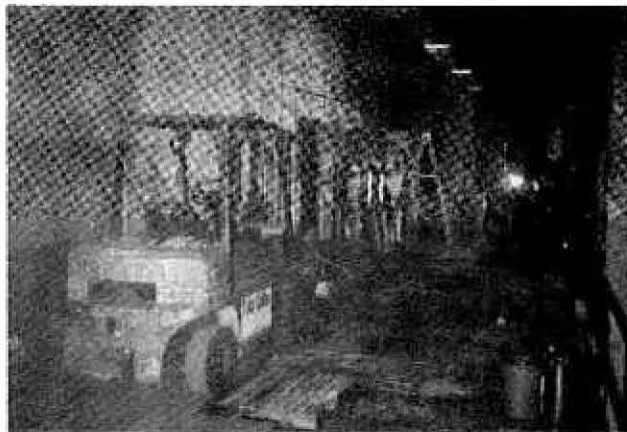
UNION STATION CONTRACT A135



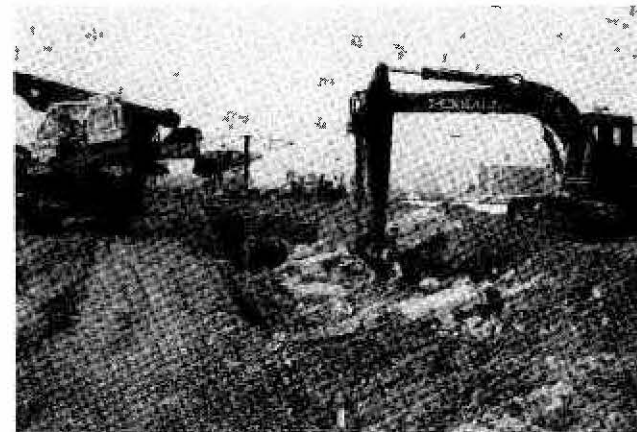
DEMOLITION OF OLD ICE HOUSE FOR
CONSTRUCTION OF NEW SUB-STATION "C"



PLACING RAILROAD TIES FOR
EXTENSION OF TRACK NO. 13



BOILER ROOM DEMOLITION. REMOVAL
OF WATER TANKS AND RELATED PIPES



DEMOLITION OF PLATFORM NO. 2
AND NORTH ACCESS RAMP



LOS ANGELES METRO RAIL

PDCD

CONTRACT PERFORMANCE REPORT

PERIOD SEPTEMBER 1988

CIVIC CENTER STATION AND TUNNEL CONTRACT A141



DEMOLITION OF PORTION OF REA BUILDING
AT UNION STATION SHAFT



CONSTRUCTING TEMPORARY MACY STREET
RAMP AT UNION STATION



INSTALLING SOLDIER PILES FOR
THE SHAFT AT UNION STATION



LOS ANGELES METRO RAIL

PDCD

CONTRACT PERFORMANCE REPORT

PERIOD SEPTEMBER 1988

CIVIC CENTER STATION AND TUNNEL CONTRACT A141 (Contd)



CORE DRILLING GROUT HOLES IN THE 9 FOOT DIAMETER STORM DRAIN AT THE INTERSECTION OF MACY AND ALAMEDA STREETS IN PREPARATION FOR CHEMICAL GROUTING



INSTALLING PVC CASING FOR CHEMICAL GROUTING IN STORM DRAIN AT MACY AND ALAMEDA STREETS



INSTALLING TRANSFORMER PAD AT UNION STATION TO PROVIDE POWER FOR TUNNELING AND DEWATERING OPERATIONS



LOS ANGELES METRO RAIL

PDCC

CONTRACT PERFORMANCE REPORT

PERIOD SEPTEMBER 1988

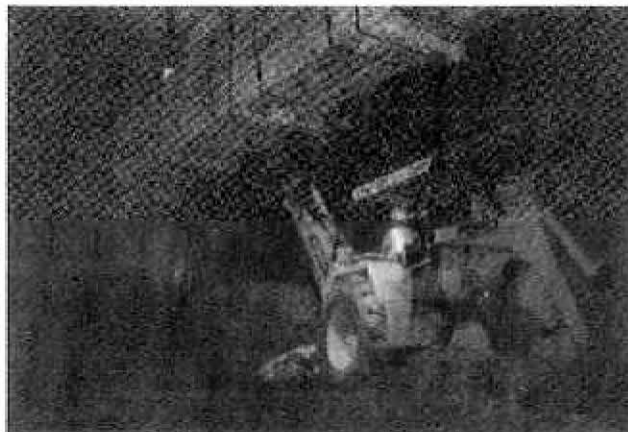
5TH/HILL UTILITY RELOCATION AND 5TH/HILL STATION STAGE I CONTRACT A145/A145A



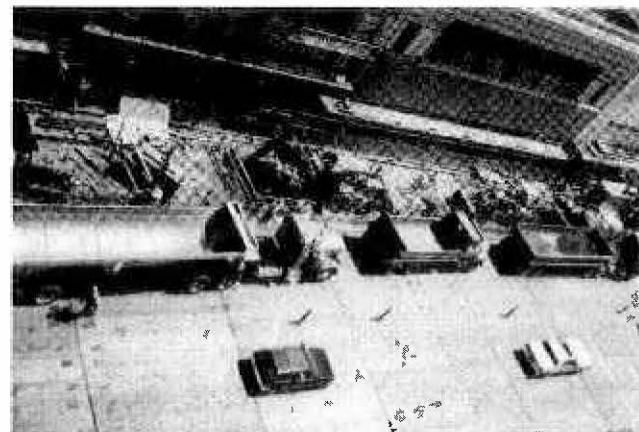
36" DECK BEAMS UNDER FABRICATION WITH THE
WELDING OF STIFFENERS



INSTALLATION OF 4"x12" TIMBER LAGGING FOR
THE EXCAVATION SUPPORT SYSTEM



SUPPORT OF UTILITIES UNDER DECK BEAMS



STATION EXCAVATION THROUGH DECKING AND
HAULING OF EXCAVATED MATERIAL ON HILL ST.

Parsons-Dillingham-De Leuw, Cather



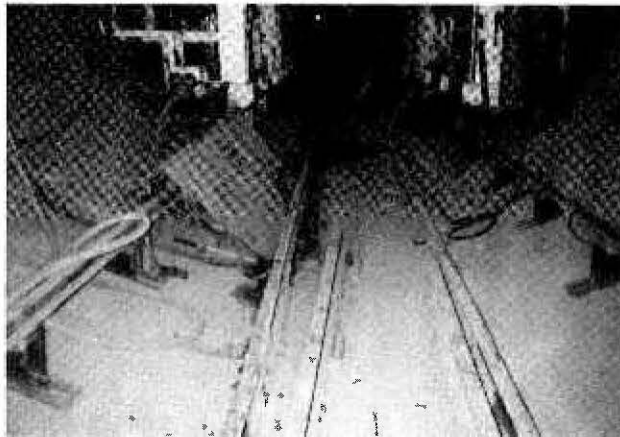
LOS ANGELES METRO RAIL

PDCD

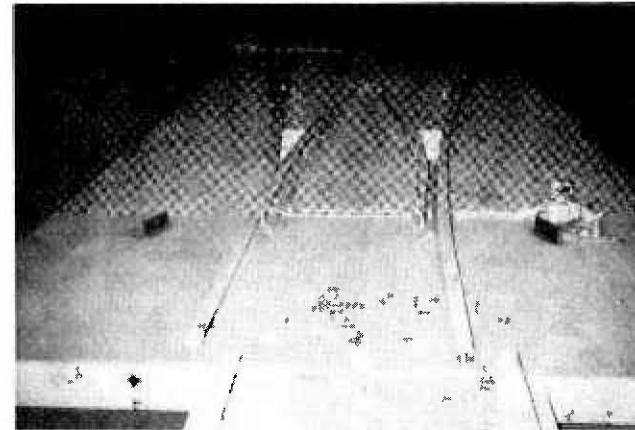
CONTRACT PERFORMANCE REPORT

PERIOD SEPTEMBER 1988

TUNNELS FROM 5TH/HILL TO 7TH/FLOWER CONTRACT A146



**TRACK INSTALLATION IN THE A1 TUNNEL FOR MUCK
CAR OPERATION DURING 2ND TEST SECTION DRIVE**



**ASSEMBLY OF SWITCHGEAR FOR
MUCK CAR OPERATION**



**TURNTABLE INSTALLATION FOR
MUCK CAR DUMPING OPERATIONS**



LOS ANGELES METRO RAIL

PDCD

CONTRACT PERFORMANCE REPORT

PERIOD SEPTEMBER 1988

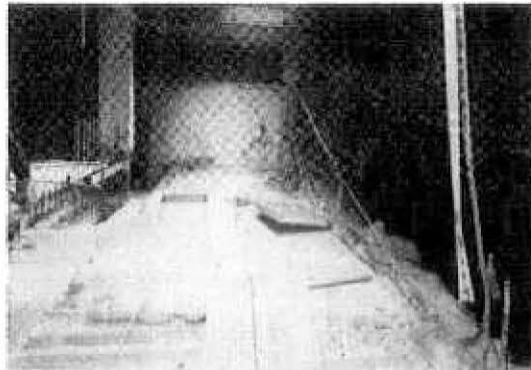
7TH/FLOWER STATION CONTRACT A165



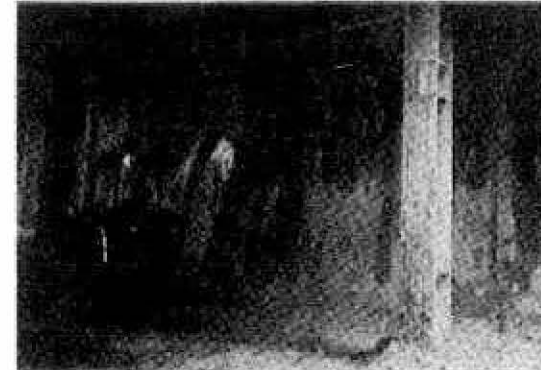
STATION EXCAVATION. CAT 977 LOADER,
PILING MUCK TO BE LOADED OUT
BY KOMATSU BACKHOE



KOMATSU BACKHOE LOADING OUT
MUCK FROM BELOW DECKING DURING
STATION EXCAVATION OPERATIONS



REBAR FOR CLOSURE WALL AT BARKER
BROTHERS BLDG PRIOR TO UNDER-
PINNING OPERATIONS



BREAKING OUT CONCRETE LAGGING TO REMOVE
EXISTING SOLDIER PILES AT BROADWAY PLAZA.
THIS AREA IS FOR THE EMERGENCY STAIRWELL 27B

Parsons-Dillingham-De Leuw, Cather

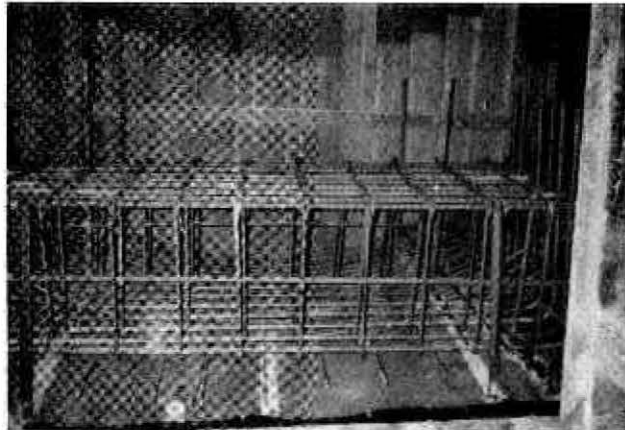


LOS ANGELES METRO RAIL
CONTRACT PERFORMANCE
REPORT

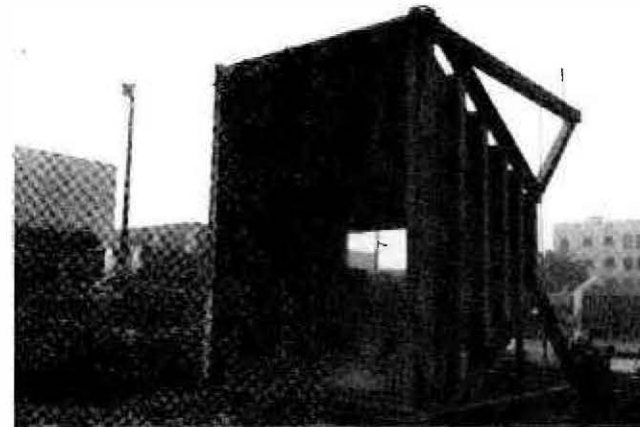
PDCD

PERIOD SEPTEMBER 1988

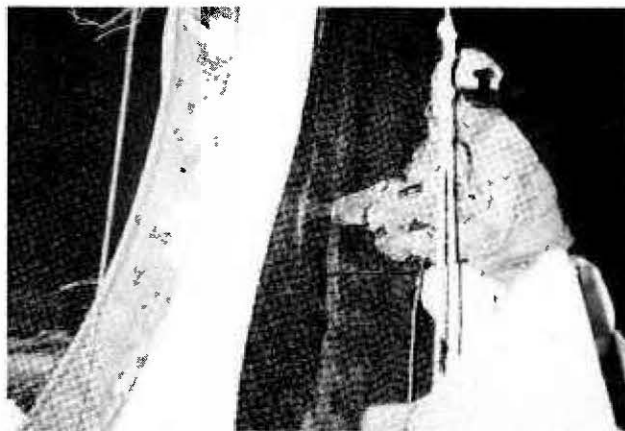
LINE SECTION - 7TH/FLOWER TO WILSHIRE/ALVARADO
CONTRACT A171



AL TUNNEL CROSS PASSAGE #10
INVERT REBAR IN PLACE



BOTH AR & AL EXCAVATION COMPLETED,
MUCK SYSTEM HOPPER DEMOBILIZED



AL TUNNEL COMMUNICATION ROOM #1
HDPE INSTALLATION



AL TUNNEL CROSS PASSAGE #15
INVERT REBAR BEING INSTALLED



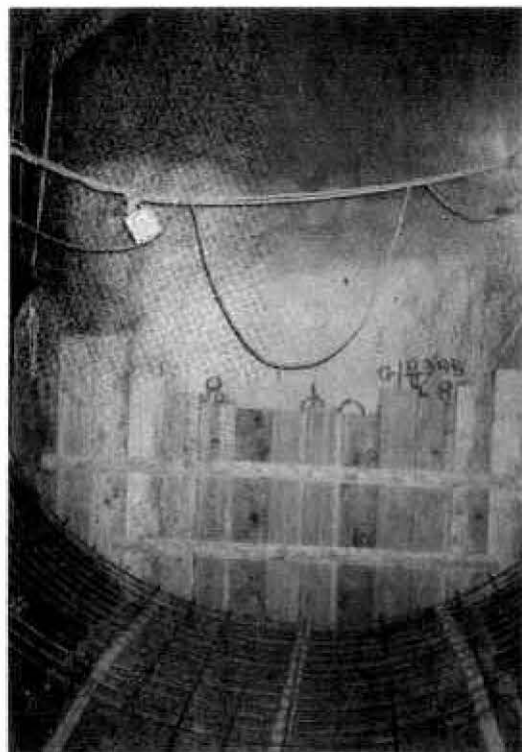
LOS ANGELES METRO RAIL

CONTRACT PERFORMANCE REPORT

PDCD

PERIOD SEPTEMBER 1988

LINE SECTION - 7TH/FLOWER TO WILSHIRE/ALVARADO CONTRACT A171 (Contd)



AL TUNNEL CROSS PASSAGE #10 INVERT
REBAR - BOTTOM MAT INSTALLED



AL TUNNEL HDPE INSTALLATION
SUMP STRUCTURE



LOS ANGELES METRO RAIL

PDCD

CONTRACT PERFORMANCE REPORT

PERIOD SEPTEMBER 1988

WILSHIRE/ALVARADO STATION - STAGE I CONTRACT A175



OVERHEAD VIEW OF STATION EXCAVATION AND LAGGING, EAST OF WESTLAKE AVE.



STATION EXCAVATION, EAST OF WESTLAKE AVE. ADJACENT TO A171 CONTRACT



VIEW FROM ALVARADO ST. FACING EAST. SHOWS STATION EXCAVATION WEST OF WESTLAKE AVE. AND TEMPORARY HAUL RAMP



LAGGING INSTALLATION ON SOUTH WALL OF EXCAVATION SUPPORT SYSTEM



LOS ANGELES METRO RAIL

CONTRACT PERFORMANCE REPORT

PDCD

PERIOD SEPTEMBER 1988

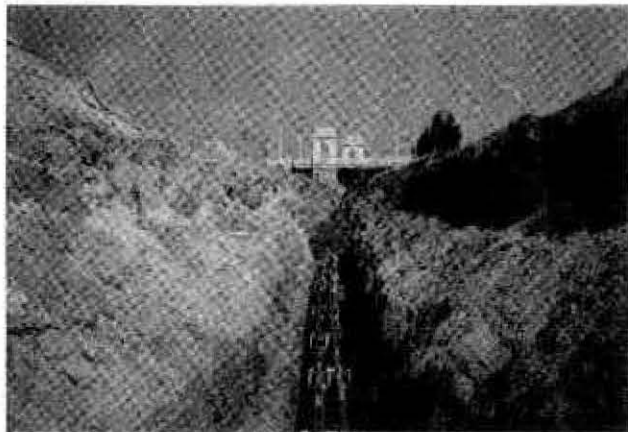
TRACKWORK INSTALLATION/YARD STORAGE AREA CONTRACT A610/A115



RETAINING WALLS AND LIGHT POLE FOUNDATIONS
INSTALLATION, SOUTH OF 6TH ST. BRIDGE



STORM DRAIN MANHOLE INSTALLATION



ENCASEMENT OF COMMUNICATION DUCT BANK,
SOUTH OF 1ST ST.



INSTALLATION OF TRACTION POWER DUCT BANK
ALONG EAST R/W, SOUTH OF 1ST ST. BRIDGE

Parsons-Dillingham-De Leuw, Cather



LOS ANGELES METRO RAIL

PDCD

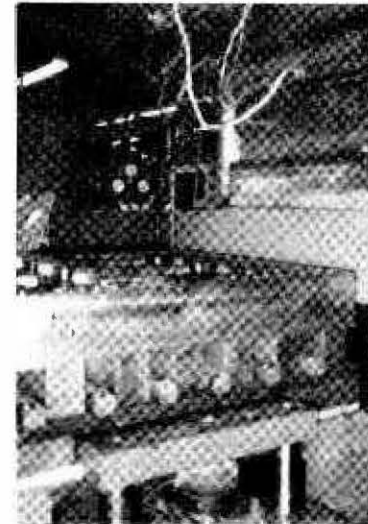
CONTRACT PERFORMANCE REPORT

PERIOD SEPTEMBER 1988

DIRECT FIXATION FASTENERS CONTRACT A616



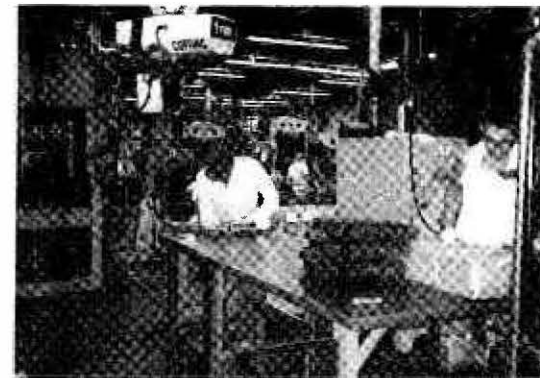
PROCESSED ELASTOMER BEING FED INTO
6 CAVITY MOLD



6 CAVITY MOLD WHICH PRODUCES
500 FASTENERS A DAY



STRIPPING EXCESS ELASTOMER
FROM FASTENER



FASTENERS BEING STACKED PRIOR TO SHIPMENT