

24104866

UMTA QUARTERLY REVIEW MEETING
LOS ANGELES METRO RAIL PROJECT
Noon, Wednesday, August 17, 1988
9:00 A.M., Thursday, August 18, 1988
600 South Spring Street
Los Angeles
Third Floor Management Information Center

MTA LIBRARY

SOUTHERN CALIFORNIA RAPID TRANSIT DISTRICT

LIBRARY

UMTA QUARTERLY REVIEW MEETING
LOS ANGELES METRO RAIL PROJECT

Noon, Wednesday, August 17, 1988
3rd Floor MIC Room - 600 South Spring Street

<u>Agenda Item</u>	<u>Presenter</u>
I. INTRODUCTION/PURPOSE OF REVIEW	
A. UMTA	B. Hynes-Cherin/
B. SCR TD	W. Rhine
II. OVERALL PROJECT REPORT	
A. SCHEDULE AND BUDGET STATUS	W. Rhine
B. CONSTRUCTION AND PROCUREMENT CONTRACTS STATUS	S. Louis
C. REAL ESTATE STATUS	V. Marshall
D. ENGINEERING STATUS	J. Crawley
E. CITY TASK FORCE	J. Crawley
F. VALUE ENGINEERING REPORTS	J. Christiansen
G. PROBLEM AREAS	W. Rhine
III. ENVIRONMENTAL IMPACT MITIGATION MEASURES	J. Crawley
IV. LRT/MRT INTERRELATED SCHEDULE ISSUES	J. Christiansen
V. DBE	W. Norwood
VI. JOINT DEVELOPMENT/NON-FEDERAL CONTRIBUTIONS REPORT	V. Marshall
VII. REVIEW OF MAY 10, 1988, MEETING OPEN ACTION ITEMS	W. Rhine
VIII. PMOC MONTHLY REPORT COMMENTS	J. Christiansen
IX. MOS-2 STATUS	A. Perdon
X. SCHEDULE AND LOCATION OF NEXT MEETING	B.Hynes-Cherin/ W. Rhine
XI. GENERAL DISCUSSION/WRAP UP	B.Hynes-Cherin/ W. Rhine
XII. APPENDIX	

UMTA QUARTERLY REVIEW MEETING
LOS ANGELES METRO RAIL PROJECT

9:00 A.M., Thursday, August 18, 1988
3rd Floor MIC Room - 600 South Spring Street

Agenda Item

Presenter

XIII. SITE TOUR

W. Rhine

I. INTRODUCTION/PURPOSE OF REVIEW

A. DISCUSSION BY B. HYNES-CHERIN

B. DISCUSSION BY W. RHINE

II. OVERALL PROJECT REPORT

A. SCHEDULE AND BUDGET STATUS

Level I - Critical Path Summary

Contract Float

Financial Plan*

Financial Plan Cost Comparison*

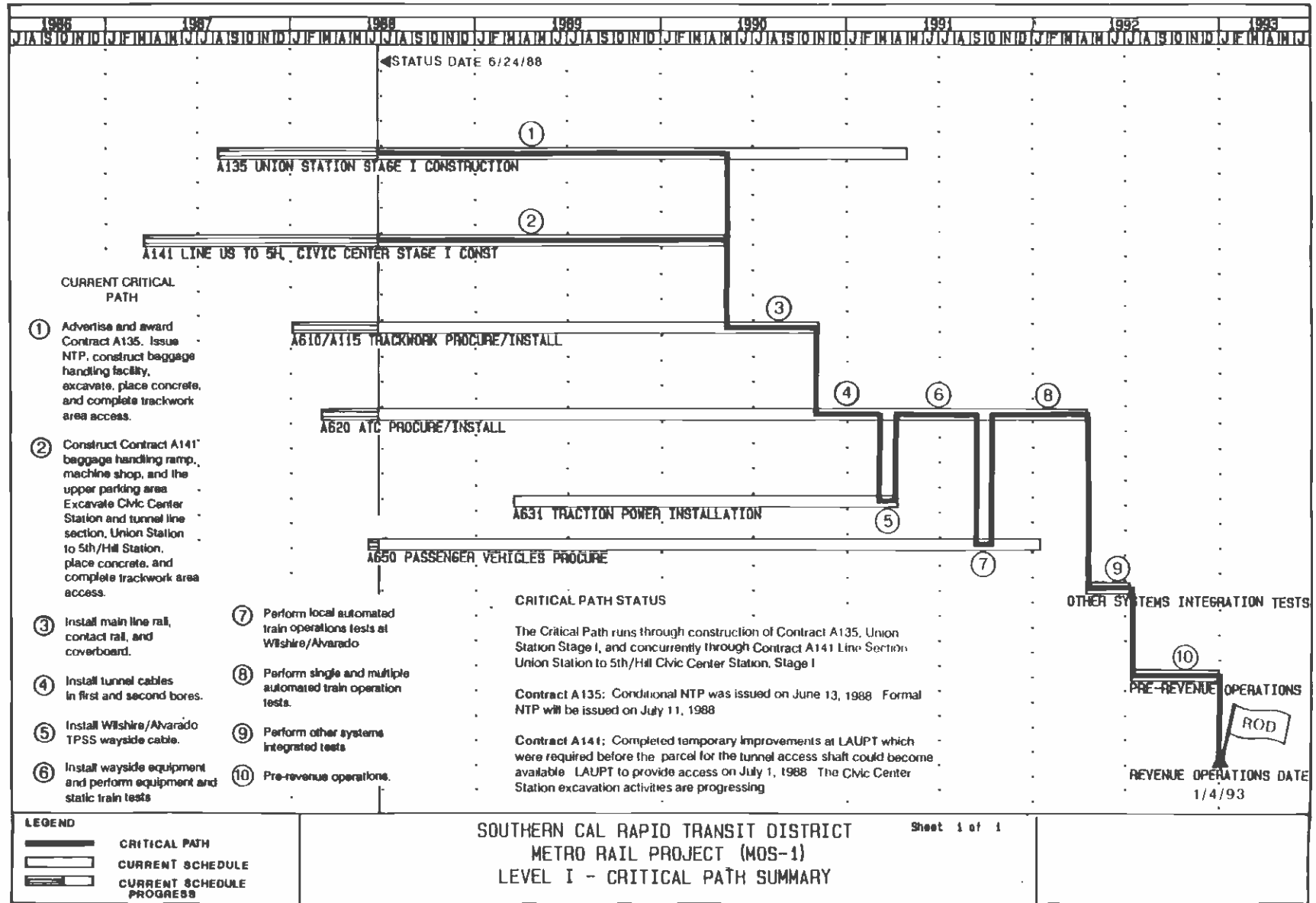
Financial Statement*

Claims Log

* Not available at time of print.

METRO RAIL PROJECT

UMTA QUARTERLY REVIEW



I.V.A.1

II. OVERALL PROJECT REPORT

A. SCHEDULE AND BUDGET STATUS

Contract Float*

06/24/88

<u>CONTRACT NUMBER</u>	<u>DESCRIPTION</u>	<u>WORKDAYS OFF CRITICAL PATH</u>		<u>REMARKS</u>
		<u>THIS QUARTER</u>	<u>PREVIOUS QUARTER</u>	
A135	Union Station, Stage I o NTP	0	0	Conditional NTP issued June 13, 1988. Formal NTP to be issued July 11, 1988.
A141	Line Section, Union Station to 5th Hill Civic center Station, Stage I o R.O.W. Access	0	0	Full R.O.W. access is currently scheduled for September 1, 1988. Partial access was granted June 15, 1988.

* Contracts with NTP less than thirty days float or contractual milestones occurring within the next ninety days with less than thirty days float.

II.A.2

METRO RAIL PROJECT

UMTA QUARTERLY REVIEW

CLAIMS ACTIVITY SUMMARY
(COMPREHENSIVE)
AS OF 06/24/88

CONTRACT	PENDING MERIT EVALUATION		PENDING NEGOTIATION		RESOLVED (CHANGE EXECUTED)		TOTALS AS OF 06/24/88	
	#	DOLLARS*	#	DOLLARS*	#	DOLLARS**	#	DOLLARS
A112	7	90,622	5	0	7	7,912	19	98,534
A121	7	19,431	0	0	3	40,000	10	59,431
A141	20	916,918	4	27,037	36	364,091	60	1,308,046
A145	19	5,011,454	9	26,369	36	470,353	64	5,508,176
A146	2	22,997	1	43,630	2	2,037	5	68,664
A165	9	92,077	1	825	0	0	10	92,902
A171	1	8,216	2	0	8	7,500	11	15,716
A175	5	268,987	1	0	8	57,075	14	326,062
A610	2	0	3	0	7	87,265	12	87,265
TOTALS	72	6,430,702	26	97,861	107	1,036,233	205	7,564,796

* - Contractor's Estimate
** - Change Order Value

II.A.3

CLAIMS ACTIVITY SUMMARY
(OVER \$100,000.00)
AS OF 06/24/88

II.V.4

CONTRACT	PENDING MERIT EVALUATION		PENDING NEGOTIATION		RESOLVED (CHANGE EXECUTED)		TOTALS AS OF 06/24/88	
	#	DOLLARS*	#	DOLLARS*	#	DOLLARS**	#	DOLLARS
A112	0	0	0	0	0	0	0	0
A121	0	0	0	0	0	0	0	0
A141	4	816,976	0	0	1	250,000	5	1,066,976
A145	3	4,940,090	0	0	1	300,000	4	5,240,090
A146	0	0	0	0	0	0	0	0
A165	0	0	0	0	0	0	0	0
A171	0	0	0	0	0	0	0	0
A175	1	113,647	0	0	0	0	1	113,647
A610	0	0	0	0	0	0	0	0
TOTALS	8	5,870,713	0	0	2	550,000	10	6,420,713

* - Contractor's estimate
** - Change Order value

METRO RAIL PROJECT

UMTA QUARTERLY REVIEW

CONTRACT NO.: A141

PENDING CLAIMS EXCEEDING \$100,000

PDCD FORM 293 (1/88)
PAGE NO. 1

CONTRACT : CIVIC CTR STATION & TUNNELS

METRO RAIL PROJECT

PRINT DATE 06/30/88

CONTRACTOR : TUTOR-SALIBA/SJ GROVES

PDCD

CUTOFF DATE 06/24/88

1	2	3	4	5
POTENTIAL CLAIM NO.	DESCRIPTION	STATED BASIS FOR CLAIM	CONTRACTOR ESTIMATED IMPACT: DOLLARS	REMARKS AND (CHANGE NO. REFERENCE)
001	2ST LOCOMOTIVE (250HP) NOT IN CONFORMANCE W/SECTION 01545.2.2.A.1	DELAY, CHANGED CONDITIONS, DEFECT. DWGS/SPECS	262000	UNDER DISPUTE. LARGEST "PERMISSIBLE" LOCOMOTIVE AS DEFINED BY MSHA IS 150 HP. 141-REC-0675. NO MERIT STATEMENT ISSUED. CONTRACTOR REQUESTING ADDITIONAL INFORMATION.
002	TREATED TIMBER LAGGING IN STATION	DELAY, CHANGED CONDITIONS, DEFECT. DWGS/SPECS	140000	141-REC-0121. NO MERIT STATEMENT ISSUED. CONTRACTOR PURSUING. RTD TO ISSUE FINAL DENIAL AND PLACE CLAIM IN DISPUTE.
052	SEWER MH A-5 INTERFERENCE WITH PILE #66.	CHANGED CONDITIONS, DEFECT. DWGS/SPECS, DELAY EXTRA WORK	125439	NO MERIT STATEMENT ISSUED. CONTRACTOR SECOND APPEAL 1/18/88. SECOND DENIAL 4/26/88. CONTRACTOR THIRD APPEAL 6/3/88. FORWARDED TO RTD FOR FINAL DETERMINATION. \$ 125,439 INCLUDE PC #60, 141-CRE-1412.
072	TELEPHONE RELOCATION 30/21 DUCTBANK (NIC) TMH 9059 TO 152+37	DELAY, CHANGED CONDITIONS, DEFECT DWGS/SPECS	289537	141-REC-0830, NO MERIT STATEMENT ISSUED. 4/28/88 CONTRACTOR REINSTATED CLAIM. NO MERIT STATEMENT ISSUED SECOND TIME, 141-REC-0891. CLAIMS PACKAGE SUBMITTED BY CONTRACTOR. 141-CRE-1484 UNDER REVIEW BY R.E.

CONTRACT A141 - PENDING CLAIMS EXCEEDING \$100,000

METRO RAIL PROJECT

UMTA QUARTERLY REVIEW

CONTRACT NO.: A175

PENDING CLAIMS EXCEEDING \$100,000

PDCD FORM 293 (1/88)

PAGE NO. 1

CONTRACT : W/A STATION, STAGE I

METRO RAIL PROJECT

PRINT DATE 06/30/88

CONTRACTOR : TUDOR-SALIBA-PERINI/JV

PDCD

CUTOFF DATE 06/24/88

1	2	3	4	5
POTENTIAL CLAIM NO.	DESCRIPTION	STATED BASIS FOR CLAIM	CONTRACTOR ESTIMATED IMPACT: DOLLARS	REMARKS AND (CHANGE NO. REFERENCE)
008	DIFFERING SITE CONDITIONS WALL & ASPHALT REMOVAL	DELAY	113647	CONTRACTOR TO SUBMIT ADDL INFORMATION SO R.E. CAN RESPOND. SITE DEMOLITION REQUIRED. R.E. REVIEWING. 175-REC-0243. CDNT HAS SUB COST IMPACTS. REQUEST TO RESOLVE THIS DISPUTE PER 6.C. ARTICLE 40 DISPUTES

CONTRACT A175 - PENDING CLAIMS EXCEEDING \$100,000

II.A.7

SOUTHERN CALIFORNIA RAPID TRANSIT DISTRICT

METRO RAIL PROJECT

UMTA QUARTERLY REVIEW

CONTRACT NO.: A141

RESOLVED CLAIMS EXCEEDING \$100,000

PDCD FORM 293 (1/88)
PAGE NO. 1

CONTRACT : CIVIC CTR STATION & TUNNELS

METRO RAIL PROJECT

PRINT DATE 06/30/88

CONTRACTOR : TUTOR-SALIBA/SJ GROVES

PDCD

CUTOFF DATE 06/24/88

1	2	3	4	5
POTENTIAL CLAIM NO.	DESCRIPTION	STATED BASIS FOR CLAIM	CONTRACTOR ESTIMATED IMPACT: DOLLARS	REMARKS AND (CHANGE NO. REFERENCE)
048	INTERFERENCES BETWEEN UTILITIES AND DECK BEAM ENVELOPE.	CHANGED CONDITIONS, DEFECT. DWGS/SPECS	250000	141-CR-029; 141-CN-018; 141-CO-015 ISSUED. INCLUDES CLAIMS 050, 051, 054. FORCE ACCOUNT. FINAL COST TO BE DETERMINED.

CONTRACT A141 - RESOLVED CLAIMS EXCEEDING \$100,000

METRO RAIL PROJECT

UMTA QUARTERLY REVIEW

CONTRACT NO.: A145

RESOLVED CLAIMS EXCEEDING \$100,000

PDCD FORM 293 (1/88)
PAGE NO. 1

CONTRACT : 5TH/HILL - UTILITY RELOCATION
- VAULT MODIFICATION

METRO RAIL PROJECT

PRINT DATE 06/30/88

CONTRACTOR : GUY F. ATKINSON CONSTRUCTION CO.

PDCD

CUTOFF DATE 06/24/88

1	2	3	4	5
POTENTIAL CLAIM NO.:	DESCRIPTION	STATED BASIS FOR CLAIM	CONTRACTOR ESTIMATED IMPACT: DOLLARS	REMARKS AND (CHANGE NO. REFERENCE)
054	DIL TANKS 4TH/HILL SW CORNER	EXTRA WORK, CHANGED CONDITIONS	300000	WORK BEING LOGGED ON TIME & MATERIAL BASIS. 145-CO-005 FULLY EXECUTED.

CONTRACT A145 - RESOLVED CLAIMS EXCEEDING \$100,000

II.A.9

SOUTHERN CALIFORNIA RAPID TRANSIT DISTRICT

S.C.R.T.D. LIBRARY

*Supplemental
Handout*

August 17, 1988

TO: UMTA QUARTERLY REVIEW PARTICIPANTS

The following sections of the UMTA Quarterly Report were completed after distribution of the report:

II. A. Financial Plan

Financial Plan Cost Comparison

Financial Statement

V. DBE

These sections are attached for inclusion in the report and are numbered as a guide to insertion in the report.

METRO RAIL PROJECT

UMTA QUARTERLY REVIEW

REVISION 6B
PG 1 OF 7
DATE 6/24/88

SOUTHERN CALIFORNIA RAPID TRANSIT DISTRICT
METRO-RAIL PROJECT MOS-1
DESIGN/PROCUREMENT/CONSTRUCTION-SCHEDULE & FINANCIAL PLAN

FORECASTED COSTS (\$000)

CONTRACT	CONTRACT DESCRIPTION	(--CURRENT SCHEDULE STATUS--)			CONTRACT BASELINE			MOS-1			NON-UNDERTAKING COSTS			TOTAL PROJECT COST
		NTP DATE	COMPLETION DATE	DURATION (MONTHS)	BUDGET (REV 6)	METRO-RAIL (REV 6B)	CORE (REV 6B)	TOTAL MOS-1	LIGHT RAIL	HOME SAVNG	BETTER MENTS			
A111	SANTA FE AVE. RESTORATION	07-Nov-90	16-Apr-91	5	171	177	0	177	0	0	0	177		
*A112	MAIN SHOP BUILDING	28-Sep-87	17-Mar-89	18	23,794	23,081	0	23,081	0	0	0	23,081		
A115	YARD STORAGE AREA					INCLUDED IN A610/A115								
A116	YARD SITE SECURITY FENCING	12-May-89	09-Jan-90	8	274	274	0	274	0	0	0	274		
A117	YARD SITE LIGHTING	16-Jan-89	05-Jan-90	12	755	755	0	755	0	0	0	755		
A118	YARD SITE LANDSCAPING	07-Nov-90	05-Feb-91	3	422	448	0	448	0	0	0	448		
A119	TRACK RELOCATION, 1st ST. & HOBART YARD					INCLUDED IN ROW								
*A121	MAINTENANCE-OF-WAY SHOP BUILDING	27-Feb-87	29-Jul-88	17	1,900	1,926	0	1,926	0	0	0	1,926		
**A123	DEMOLITION OF STRUCTURE ON PARCEL A1-009		23-Feb-87	N/A	249	249	0	249	0	0	0	249		
A124	DUCOMMUN ST. & JACKSON ST. RESTORATION	07-Nov-90	22-Feb-91	4	40	43	0	43	0	0	0	43		
*A130	YARD LEADS AND TRANSFER ZONE	01-Jul-88	08-Jun-90	23	45,600	37,678	0	37,678	0	0	0	37,678		
MA-007	YARD/SHOPS TELEPHONE RELOCATION	01-Jul-88	08-Jun-90	23	90	90	0	90	0	0	0	90		
MA-093	YARD/SHOPS GAS RELOCATION	01-Jul-88	08-Jun-90	23	530	530	0	530	0	0	0	530		
MA-A09	YARD/SHOPS WATER RELOCATION	01-Jul-88	08-Jun-90	23	373	373	0	373	0	0	0	373		
MA-009	YARD/SHOPS POWER RELOCATION	01-Jul-88	08-Jun-90	23	60	60	0	60	0	0	0	60		
MA-545	YARD/SHOPS CHEVRON RELOCATION	01-Jul-88	08-Jun-90	23	90	90	0	90	0	0	0	90		
MA-056	YARD/SHOPS CALTRANS	01-Jul-88	08-Jun-90	23	111	111	0	111	0	0	0	111		
MA-008	YARD/SHOPS WESTERN UNION REPLACEMENT	01-Jul-88	08-Jun-90	23	5	5	0	5	0	0	0	5		
A132	DEMOLITION OF STRUCTURE ON PARCEL A1-024					DELETED								
A133	UNION STATION BAGGAGE HANDLING FACILITY					INCLUDED IN A135								
**A134	DEMOLITION OF STRUCTURE ON PARCEL A1-032		29-May-87	N/A	79	79	0	79	0	0	0	79		

* CONTRACT AWARDED

** CONTRACT COMPLETED

II.A.10

METRO RAIL PROJECT

UMTA QUARTERLY REVIEW

REVISION 6B
PG 2 OF 7
DATE 6/24/88

SOUTHERN CALIFORNIA RAPID TRANSIT DISTRICT
METRO-RAIL PROJECT MOS-1
DESIGN/PROCUREMENT/CONSTRUCTION-SCHEDULE & FINANCIAL PLAN

FORECASTED COSTS (\$000)

CONTRACT	CONTRACT DESCRIPTION	(--CURRENT SCHEDULE STATUS--)		CONTRACT BASELINE			MOS-1			NON-UNDERTAKING COSTS			TOTAL PROJECT COST
		NTP DATE	COMPLETION DATE	DURATION (MONTHS)	BUDGET (REV 6)	METRO-RAIL (REV 6B)	CORE (REV 6B)	TOTAL MOS-1	LIGHT RAIL	HOME SAVNG	BETTER MENTS		
*A135	UNION STATION-STAGE I	11-Jul-88	29-Apr-91	34	58,680	52,453	0	52,453	0	0	0	52,453	
MA-007	UNION STATION TELEPHONE RELOCATION	11-Jul-88	29-Apr-91	34	30	30	0	30	0	0	0	30	
MA-A09	UNION STATION WATER RELOCATION	11-Jul-88	29-Apr-91	34	50	50	0	50	0	0	0	50	
MA-009	UNION STATION POWER RELOCATION	11-Jul-88	29-Apr-91	34	150	150	0	150	0	0	0	150	
MA-008	UNION STATION WESTERN UNION REPLACEMENT	11-Jul-88	29-Apr-91	34	5	5	0	5	0	0	0	5	
MA-056	UNION STATION CALTRANS	11-Jul-88	29-Apr-91	34	50	50	0	50	0	0	0	50	
A136	UNION STATION - STAGE II	05-Jan-90	19-Aug-91	19	14,508	13,842	0	13,842	0	0	0	13,842	
**A137	SO. PACIFIC - COMMUNICATION RELOCATION		30-Jan-87	N/A	13	13	0	13	0	0	0	13	
A138	UNION STATION SITework	16-Aug-91	19-Mar-92	7	2,251	4,511	0	4,511	0	0	0	4,511	
A139	UNION STATION SITE LANDSCAPING	14-Dec-90	21-Oct-92	22	247	3,530	0	3,530	0	0	0	3,530	
*A141	LINE-UNION STATION TO 5th/HILL STATION	16-Mar-87	07-May-90	38	71,207	76,490	0	76,490	0	0	0	76,490	
	CIVIC CENTER STATION - STAGE I			0	0	0	0	0	0	0	0	0	
MA-008	CIVIC CENTER WESTERN UNION REPLACEMENT	28-Aug-87	07-May-90	32	5	5	0	5	0	0	0	5	
MA-A09	CIVIC CENTER WATER RELOCATION	15-Dec-86	07-May-90	41	540	580	0	580	0	0	0	580	
MA-009	CIVIC CENTER POWER RELOCATION	16-Sep-86	07-May-90	44	270	270	0	270	0	0	0	270	
MA-007	CIVIC CENTER TELEPHONE RELOCATION	20-Oct-86	07-May-90	43	1,370	1,370	0	1,370	0	0	0	1,370	
MA-093	CIVIC CENTER GAS RELOCATION	16-Sep-86	07-May-90	44	75	75	0	75	0	0	0	75	
MA-533	CIVIC CENTER CABLE TV RELOCATION	28-Aug-87	07-May-90	32	5	5	0	5	0	0	0	5	
MA-056	CIVIC CENTER CALTRANS	20-Jan-88	07-May-90	28	45	45	0	45	0	0	0	45	
*A143	PROCURE WTR TRTMT CHEMICALS	23-May-88	01-Apr-91	34	0	2900	0	2,900	0	0	0	2,900	
*A144	WTR TRTMT PLANT OPERATIONS	01-Jul-88	01-Apr-91	33	0	4892	0	4,892	0	0	0	4,892	

* CONTRACT AWARDED

** CONTRACT COMPLETED

I.I.V.I.I

METRO RAIL PROJECT

UMTA QUARTERLY REVIEW

REVISION 6B
PG 3 OF 7
DATE 6/24/88

SOUTHERN CALIFORNIA RAPID TRANSIT DISTRICT
METRO-RAIL PROJECT MOS-1
DESIGN/PROCUREMENT/CONSTRUCTION-SCHEDULE & FINANCIAL PLAN

FORECASTED COSTS (\$000)

CONTRACT	CONTRACT DESCRIPTION	NTP COMPLETION		DURATION		MOS-1			NON-UNDERTAKING COSTS			TOTAL PROJECT COST
		DATE	DATE	(MONTHS)	(REV 6)	(REV 6B)	(REV 6B)	TOTAL MOS-1	LIGHT RAIL	HOME SAVNG	BETTER MENTS	
*A145	5TH & HILL STATION - STAGE I	02-Apr-87	22-Jun-90	39	40,002	45,451	0	45,451	0	0	0	45,451
MA-008	5th/HILL WESTERN UNION REPLACEMENT	02-Apr-87	22-Jun-90	39	25	25	0	25	0	0	0	25
MA-A09	5th/HILL WATER RELOCATION	08-Sep-87	22-Jun-90	33	240	240	0	240	0	0	0	240
MA-009	5th/HILL POWER RELOCATION	16-Sep-86	22-Jun-90	45	1,510	1,510	0	1,510	0	0	0	1,510
MA-007	5th/HILL TELEPHONE RELOCATION	07-Oct-86	22-Jun-90	45	320	320	0	320	0	0	0	320
MA-093	5th/HILL GAS RELOCATION	02-Sep-87	22-Jun-90	34	150	150	0	150	0	0	0	150
MA-533	5th/HILL CABLE TV REPLACEMENT	31-Aug-87	22-Jun-90	34	5	5	0	5	0	0	0	5
*A146	LINE-5th/HILL STA. TO 7th/FLOWER STA.	06-Apr-87	30-Aug-89	29	18,272	18,358	0	18,358	0	0	0	18,358
A147	CIVIC CENTER STATION - STAGE II	29-Aug-89	09-May-91	20	12,835	12,921	0	12,921	0	0	0	12,921
A157	5th/HILL STATION - STAGE II	07-Nov-89	07-Aug-91	21	13,307	13,307	0	13,307	0	0	0	13,307
**A161	7th&FLOWER UTILITY REARRANGEMENT		15-Nov-87	N/A	1,532	1,505	0	1,505	1,617	0	272	3,394
A149	UTILITY RELOCATION & VAULT MODIFICATIONS								INCLUDED IN A145			
*A165	7th&FLOWER STATION - STAGE I	05-Jan-88	28-Sep-90	33	23,045	23,757	0	23,757	19,812	0	150	43,719
MA-008	7th/FLOWER WESTERN UNION REPLACEMENT	24-Apr-87	28-Sep-90	41	40	40	0	40	40	0	0	80
MA-A09	7th/FLOWER WATER RELOCATION	07-Oct-87	28-Sep-90	36	390	830	0	830	296	0	0	1,126
MA-009	7th/FLOWER POWER RELOCATION	15-Dec-86	28-Sep-90	45	250	250	0	250	264	0	0	514
MA-007	7th/FLOWER TELEPHONE RELOCATION	02-Feb-87	28-Sep-90	44	120	120	0	120	300	0	0	420
MA-093	7th/FLOWER GAS RELOCATION	17-Sep-87	28-Sep-90	36	100	100	0	100	213	0	0	313
MA-533	7th/FLOWER CABLE TV RELOCATION	06-Jul-87	28-Feb-90	32	55	55	0	55	0	0	0	55
A167	7th/FLOWER STATION - STAGE II	27-Mar-89	03-Jul-91	27	7,979	10,428	0	10,428	4,260	0	0	14,689
*A171	LINE-7th/FLOWER STATION TO WILSHIRE/ALVARADO STATION	02-Feb-87	24-Jul-89	30	26,704	26,719	0	26,719	0	0	0	26,719

* CONTRACT AWARDED

** CONTRACT COMPLETED

METRO RAIL PROJECT

UMTA QUARTERLY REVIEW

REVISION 6B
PG 4 OF 7
DATE 6/24/88

SOUTHERN CALIFORNIA RAPID TRANSIT DISTRICT
METRO-RAIL PROJECT MOS-1
DESIGN/PROCUREMENT/CONSTRUCTION-SCHEDULE & FINANCIAL PLAN

FORECASTED COSTS (\$000)

CONTRACT	CONTRACT DESCRIPTION	NTP		COMPLETION		DURATION		BUDGET		MOS-1			NON-UNDERTAKING COSTS			TOTAL PROJECT COST
		DATE	DATE	DATE	DATE	(MONTHS)	(REV 6)	(REV 6B)	(REV 6B)	TOTAL MOS-1	LIGHT RAIL	HOME SAVNG	BETTER MENTS			
**A172	DEMOLITION OF STRUCTURE ON PARCEL A1-208		04-Mar-87			N/A	26	26	0	26	0	0	0	0	26	
**A173	DEMOLITION OF STRUCTURES ON PARCELS A1-221, A1-222, A1-224, AND A1-225		14-Apr-87			N/A	67	67	0	67	0	0	0	0	67	
*A175	WILSHIRE/ALVARADO STATION - STAGE I	27-Jul-87	09-Mar-90	31	23,417	23,744	0	23,744	0	0	0	0	0	23,744		
MA-A09	WILSHIRE/ALVARADO WATER RELOCATION	04-Sep-87	09-Mar-90	30	200	200	0	200	0	0	0	0	0	200		
MA-009	WILSHIRE/ALVARADO POWER RELOCATION	04-Sep-87	09-Mar-90	30	30	30	0	30	0	0	0	0	0	30		
MA-007	WILSHIRE/ALVARADO TELEPHONE RELOCATION	04-Sep-87	09-Mar-90	30	70	70	0	70	0	0	0	0	0	70		
MA-093	WILSHIRE/ALVARADO GAS RELOCATION	04-Sep-87	09-Mar-90	30	50	50	0	50	0	0	0	0	0	50		
MA-056	WILSHIRE/ALVARADO CALTRANS	22-Oct-87	30-May-90	31	54	54	0	54	0	0	0	0	0	54		
MA-533	WILSHIRE/ALVARADO CABLE TV RELOCATION	04-Sep-87	09-Mar-90	30	35	35	0	35	0	0	0	0	0	35		
A177	DEMOLITION OF STRUCTURE ON PARCEL A1-209		INCLUDED IN A136			N/A	0	0	0	0	0	0	0	0		
A185	WILSHIRE/ALVARADO STATION RESTORATION	13-Jul-90	01-Mar-91	8	788	788	0	788	0	0	0	0	0	788		
A186	WILSHIRE/ALVARADO STA. SITE LANDSCAPING	13-Jul-90	01-Mar-91	8	116	116	0	116	0	0	0	0	0	116		
A187	WILSHIRE/ALVARADO STATION - STAGE II	15-Sep-89	08-Mar-91	18	8,781	8,781	0	8,781	0	0	0	0	0	8,781		
MA-002	CITY OF LOS ANGELES AWP '87	01-Jul-86	30-Jun-87	12	1,012	1,012	0	1,012	233	0	0	0	0	1,245		
MA-002	CITY OF LOS ANGELES AWP '88	01-Jul-87	30-Jun-88	12	1,625	1,625	0	1,625	281	0	0	0	0	1,906		
MA-002	CITY OF LOS ANGELES AWP '89	01-Jul-88	30-Jun-89	12	2,000	2,000	0	2,000	300	0	0	0	0	2,300		
MA-002	CITY OF LOS ANGELES AWP '90	01-Jul-89	30-Jun-90	12	1,500	1,500	0	1,500	250	0	0	0	0	1,750		
MA-002	CITY OF LOS ANGELES AWP '91	01-Jul-90	30-Jun-91	12	1,000	1,000	0	1,000	50	0	0	0	0	1,050		
MA-094	COUNTY OF LOS ANGELES AWP '87	01-Jul-86	30-Jun-87	12	50	50	0	50	0	0	0	0	0	50		
MA-094	COUNTY OF LOS ANGELES AWP '88	01-Jul-87	30-Jun-88	12	85	85	0	85	0	0	0	0	0	85		
MA-094	COUNTY OF LOS ANGELES AWP '89	01-Jul-88	30-Jun-89	12	150	150	0	150	0	0	0	0	0	150		
MA-094	COUNTY OF LOS ANGELES AWP '90	01-Jul-89	30-Jun-90	12	150	150	0	150	0	0	0	0	0	150		
MA-005	WATER REPLENISHMENT SERVICES	01-Jun-87	13-Apr-90	34	300	300	0	300	0	0	0	0	0	300		

* CONTRACT AWARDED

** CONTRACT COMPLETED

I.I.A.13

METRO RAIL PROJECT

UMTA QUARTERLY REVIEW

REVISION 6B
PG 5 OF 7
DATE 6/24/88

SOUTHERN CALIFORNIA RAPID TRANSIT DISTRICT
METRO-RAIL PROJECT MOS-1
DESIGN/PROCUREMENT/CONSTRUCTION-SCHEDULE & FINANCIAL PLAN

FORECASTED COSTS (\$000)

CONTRACT	CONTRACT DESCRIPTION	(--CURRENT SCHEDULE STATUS--)			CONTRACT BASELINE			NON-UNDERTAKING COSTS			TOTAL PROJECT COST	
		NTP DATE	COMPLETION DATE	DURATION (MONTHS)	BUDGET (REV 6)	METRO-RAIL (REV 6B)	CORE (REV 6B)	TOTAL MOS-1	LIGHT RAIL	HOME SAVNG		BETTER MENTS
*A610/A115	TRACKWORK INSTALLATION	04-Jan-88	06-Nov-90	34	21,515	21,586	0	21,586	0	0	0	21,586
*A612	CONTACT RAIL PROCUREMENT	01-Jun-88	23-Feb-90	21	1,727	2,053	0	2,053	0	0	0	2,053
A615	PROTECTIVE COVERBOARD PROCUREMENT	11-Aug-88	23-Feb-90	18	776	515	0	515	0	0	0	515
*A616	RAIL FASTENERS PROCUREMENT (MRT ONLY)	14-Oct-87	14-Sep-90	35	1,555	1,524	0	1,524	3,828	0	0	5,352
*A620	AUTOMATIC TRAIN CONTROL PROCURE/INSTALL	01-Mar-88	16-Apr-92	50	11,227	11,308	0	11,308	0	0	0	11,308
A630	TRACTION POWER EQUIPMENT PROCUREMENT	27-Sep-88	20-Jul-90	22	6,246	7,648	0	7,648	289	0	0	7,937
A631	TRACTION POWER EQUIPMENT INSTALLATION	16-Mar-88	10-Apr-91	37	5,991	5,929	0	5,929	133	0	0	6,063
*A640	COMMUNICATIONS PROCURE/INSTALL	07-Jul-88	25-Nov-91	41	26,075	34,325	0	34,325	1,351	0	0	35,676
*A650	PASSENGER VEHICLES PROCUREMENT	01-Jun-88	16-Jan-92	44	52,337	53,987	0	53,987	0	0	0	53,987
A655	TRANSPORTATION TEST CENTER	30-Apr-90	28-Nov-90	7	597	629	0	629	0	0	0	629
A660	FARE COLLECTION											
INCLUDED IN H-840												
A671	LOCOMOTIVE PROCUREMENT	25-Apr-89	23-Oct-90	18	617	617	0	617	0	0	0	617
A672	FLAT CAR PROCUREMENT	15-Mar-91	10-Mar-92	12	56	59	0	59	0	0	0	59
A675	CRANE PROCUREMENT (FOR FLAT CAR)	15-Mar-91	10-Mar-92	12	25	26	0	26	0	0	0	26
A680	OPERATIONAL GRAPHICS PROCUREMENT	02-Aug-89	18-Apr-90	9	123	123	0	123	0	0	0	123
A710	ESCALATORS PROCURE/INSTALL	29-Sep-88	22-Aug-91	35	7,958	14,338	0	14,338	693	0	0	15,031
A720	ELEVATORS PROCURE/INSTALL	29-Sep-88	22-Aug-91	35	1,322	1,714	0	1,714	572	0	0	2,286
A730	FIXED SHOP EQUIPMENT PROCURE/INSTALL	09-Feb-90	19-Feb-91	12	30	30	0	30	0	0	0	30
A732	WHEEL TRUING MACHINE	10-Aug-88	01-May-91	33	0	693	0	693	0	0	0	693
A735	FREE STANDING SHOP EQUIPMENT PROCUREMENT	09-Feb-90	19-Feb-91	12	350	353	0	353	0	0	0	353

* CONTRACT AWARDED

** CONTRACT COMPLETED

METRO RAIL PROJECT

UMTA QUARTERLY REVIEW

REVISION 6A
PG 6 OF 7
DATE 6/24/88

SOUTHERN CALIFORNIA RAPID TRANSIT DISTRICT
METRO-RAIL PROJECT MOS-1
DESIGN/PROCUREMENT/CONSTRUCTION-SCHEDULE & FINANCIAL PLAN

FORECASTED COSTS (\$000)

CONTRACT	CONTRACT DESCRIPTION	---CURRENT SCHEDULE STATUS---		CONTRACT BASELINE		MOS-1			NON-UNDERTAKING COSTS			TOTAL PROJECT COST
		NTP DATE	COMPLETION DATE	DURATION (MONTHS)	BUDGET (REV 6)	METRO-RAIL (REV 6B)	CORE (REV 6B)	TOTAL MOS-1	LIGHT RAIL	HOME SAVNG	BETTER MENTS	
*A740	VENTILATION EQUIPMENT PROCUREMENT	01-Mar-88	30-Sep-91	43	5,164	3,188	0	3,188	867	0	0	4,055
*A745	TPSS-AIR HANDLING EQUIPMENT PROCUREMENT	16-Feb-88	30-Sep-91	43	1,524	1,358	0	1,358	0	0	0	1,358
A750	DISPOSAL OF HAZARDOUS MATERIAL	09-Sep-88	09-Sep-91	36	0	2,358	0	2,358	0	0	0	2,358
A760	SIGNS & GRAPHICS PROCUREMENT	18-Jul-89	27-Jun-90	11	1,354	1,354	0	1,354	164	0	0	1,518
A770	RUBBER-TIRED VEHICLES PROCUREMENT	23-Feb-90	19-Feb-91	12	393	398	0	398	0	0	0	398
A775	MOBILE EMERGENCY & MAINT. EQUIP. PROCURE	18-Apr-90	22-Oct-90	6	405	405	0	405	0	0	0	405
A780	FURNITURE PROCUREMENT	07-Nov-90	14-May-91	6	207	207	0	207	0	0	0	207
A785	FIRE SUPPRESSION EQUIPMENT PROCUREMENT	15-May-90	22-Oct-90	5	17	17	0	17	0	0	0	17
A790	FIRST STORES & CONSUMABLES PROCUREMENT	31-May-90	22-Oct-90	5	126	126	0	126	0	0	0	126
A795	UNINTERRUPTIBLE POWER SUPPLIES PROCURE	01-Aug-88	24-Dec-90	29	1,066	1,070	0	1,070	86	0	0	1,156
H840	FARE COLLECTION	15-Jan-88	26-Nov-91	46	1,911	1,626	0	1,626	0	0	0	1,626
	ART-N-TRANSIT	N/A	N/A	N/A	948	948	0	948	0	0	0	948
*4239	TELEPHONE EQUIPMENT	N/A	N/A	N/A	0	1,356		1,356	0	0	0	1,356
				* CONTRACT AWARDED								
				** CONTRACT COMPLETED								
SUBTOTAL CONSTRUCTION/PROCUREMENT					564,071	597,027	0	597,027	35,899	0	422	633,348

II.A.15

METRO RAIL PROJECT

UMTA QUARTERLY REVIEW

REVISION 6B
PG 7 OF 7
DATE 6/24/88

SOUTHERN CALIFORNIA RAPID TRANSIT DISTRICT
METRO-RAIL PROJECT MOS-1
DESIGN/PROCUREMENT/CONSTRUCTION-SCHEDULE & FINANCIAL PLAN

FORECASTED COSTS (\$000)

DESCRIPTION	NTP DATE	COMPLETION DATE	BASELINE BUDGET REV 6	MOS-1			NON-UNDERTAKING COSTS			TOTAL PROJECT COST
				METRO-RAIL (REV 6B)	CORE (REV 6B)	TOTAL MOS-1	LIGHT RAIL	HOME SAVNGS	BETTER MENTS	
GENERAL CONSULTANT	N/A	N/A	156,199	159,470	847	160,317	4,309	330	4	164,960
CONSTRUCTION MANAGER	N/A	N/A	68,796	79,884	0	79,884	1,841	4	13	81,742
CONST RELATED PROF SERV	N/A	N/A	10,063	12,553	6	12,559	100	0	0	12,659
DES. RELATED PROF. SERV	N/A	N/A	27,209	9,769	2,819	12,588	0	0	0	12,588
AGENCY	N/A	N/A	122,051	115,691	850	116,541	548	26	8	117,123
RIGHT OF WAY	N/A	N/A	102,224	101,916		101,916	0	0	0	101,916
OCIP	N/A	N/A	52,746	53,068		53,068	3,438	0	0	56,506
PRELIMINARY ENGINEERING	N/A	N/A	32,800	32,800		32,800	0	0	0	32,800
*CONTINGENCY	N/A	N/A	113,741	83,200		83,200	3,870	0	0	87,070
SUBTOTAL OTHER COSTS			685,829	648,351	4,522	652,873	14,106	360	25	667,364
SUBTOTAL CONSTRUCTION/PROCUREMENT COSTS			564,071	597,027	0	597,027	35,899	0	421	633,347
TOTAL MOS-1 COSTS			1,249,900	1,245,378	4,522	1,249,900	50,005	360	446	1,300,711

*INCLUDES REV 6 CONTINGENCY 112,242 AND PMO 1,499

II.A.16

METRO RAIL PROJECT

UMTA QUARTERLY REVIEW

FINANCIAL PLAN COMPARISON AND ANALYSIS (ESCALATED)
 REVISION 6A TO REVISION 6B

CONTRACT	CONTRACT DESCRIPTION	A	B	C =	D =	COMMENTS
		3/25/88	6/24/88	B-A	(C/A)100	
		ESC \$ (000)	ESC \$ (000)	VARIANCE (000)	% CHANGE	
A111	SANTA FE AVE. RESTORATION	174	177	3	2	
*A112	MAIN SHOP BUILDING	23,008	23,081	73	0	
A115	YARD STORAGE AREA	(NOW INCLUDED WITH A610)				
A116	YARD SITE SECURITY FENCING	274	274	0	0	
A117	YARD SITE LIGHTING	755	755	0	0	
A118	YARD SITE LANDSCAPING	435	448	13	3	
*A121	MAINTENANCE-OF-WAY SHOP BUILDING	1,911	1,926	15	1	
**A123	DEMOLITION OF STRUCTURE ON PARCEL A1-009	249	249	0	0	
A124	DUCOMMUN ST. & JACKSON ST. RESTORATION	42	43	1	2	
*A130	YARD LEADS AND TRANSFER ZONE	47,545	37,678	(9,867)	(21)	CONTRACT AWARDED (\$9,867,000)
MA-007	YARD/SHOPS TELEPHONE RELOCATION	90	90	0	0	
MA-093	YARD/SHOPS GAS RELOCATION	530	530	0	0	
MA-A09	YARD/SHOPS WATER RELOCATION	373	373	0	0	
MA-009	YARD/SHOPS POWER RELOCATION	60	60	0	0	
MA-545	YARD/SHOPS CHEVRON RELOCATION	90	90	0	0	
MA-056	YARD/SHOPS CALTRANS	111	111	0	0	
MA-008	YARD/SHOPS WESTERN UNION REPLACEMENT	5	5	0	0	
A132	DEMOLITION OF STRUCTURE ON PARCEL A1-024	DELETED				
A133	UNION STATION BAGGAGE HANDLING FACILITY	INCLUDED IN A135				
**A134	DEMOLITION OF STRUCTURE ON PARCEL A1-032	79	79	0	0	

*CONTRACT AWARDED

**CONTRACT COMPLETED

I.I.A. I. I.

METRO RAIL PROJECT

UMTA QUARTERLY REVIEW

FINANCIAL PLAN COMPARISON AND ANALYSIS (ESCALATED)
 REVISION 6A TO REVISION 6B

CONTRACT	CONTRACT DESCRIPTION	A	B	C =	D =	COMMENTS
		3/25/88	6/24/88	B-A	(C/A)100	
		ESC \$ (000)	ESC \$ (000)	VARIANCE (000)	% CHANGE	
*A135	UNION STATION - STAGE I	53,424	52,453	(971)	(2)	AWARD @(\$6,746,000);BAG HNDLNG \$5,323,000;BOILR RM & MISC (\$452,000)
MA-007	UNION STATION TELEPHONE RELOCATION	30	30	0	0	
MA-A09	UNION STATION WATER RELOCATION	50	50	0	0	
MA-009	UNION STATION POWER DWP	150	150	0	0	
MA-008	UNION STATION WESTERN UNION REPLACEMENT	5	5	0	0	
MA-056	UNION STATION CALTRANS	50	50	0	0	
A136	UNION STATION - STAGE II	14,508	13,842	(666)	(5)	TRANSFERRED HISTORICAL RAMP TO A139 (\$666,000)
**A137	SO. PACIFIC COMMUNICATION RELOCATION	13	13	0	0	
A138	UNION STATION SITEWORK	4,300	4,511	211	5	REARRANGE UPPER LOT \$190,000;MIS CHANGE ACTIVITY \$21,000
A139	UNION STATION SITE LANDSCAPING	246	3,530	3,284	1,335	HISTORICAL RAMP \$1,280,000;REA BLDG \$1,920,000;MISC \$84,000
*A141	LINE-UNION STATION TO 5th/HILL STATION	71,582	76,490	4,908	7	CONTRACTOR'S CR CONST. SEQUENCE \$5,000,000;MISC. (\$92,000)
	CIVIC CENTER STATION - STAGE I					
MA-008	CIVIC CENTER WESTERN UNION REPLACEMENT	5	5	0	0	
MA-A09	CIVIC CENTER WATER RELOCATION	580	580	0	0	
MA-009	CIVIC CENTER POWER RELOCATION	270	270	0	0	
MA-007	CIVIC CENTER TELEPHONE RELOCATION	1,370	1,370	0	0	
MA-093	CIVIC CENTER GAS RELOCATION	75	75	0	0	
MA-533	CIVIC CENTER CABLE TV RELOCATION	5	5	0	0	
MA-056	CIVIC CENTER CALTRANS	45	45	0	0	
*A143	PROCURE WTR TRTMT CHEMICALS	2,900	2,900	0	0	
*A144	WTR TRTMT PLANT OPERATIONS	2,675	4,892	2,217	83	ADDITIONAL COST FOR 4 YRS WATER PLANT OPERATION \$2,217,000

*CONTRACT AWARDED

**CONTRACT COMPLETED

PAGE 2 OF 6

DATE: 6/24/88

II.A.18

SCRIPID. LIBRARY

METRO RAIL PROJECT

UMTA QUARTERLY REVIEW

FINANCIAL PLAN COMPARISON AND ANALYSIS (ESCALATED)
 REVISION 6A TO REVISION 6B

PAGE 3 OF 6
 DATE: 6/24/88

CONTRACT	CONTRACT DESCRIPTION	A 3/25/88 ESC \$ (000)	B 6/24/88 ESC \$ (000)	C = B-A VARIANCE (000)	D = (C/A)100 % CHANGE	COMMENTS
*A145/145A	5th/HILL STATION - STAGE I	44,367	45,451	1,084	2	CLAIM DWG DSCREPNCTIES \$1,263,000;MOD MECH WRK(\$469,500);MISC \$310,000
MA-008	5th/HILL WESTERN UNION REPLACEMENT	25	25	0	0	
MA-A09	5th/HILL WATER RELOCATION	240	240	0	0	
MA-009	5th/HILL POWER RELOCATION	1,510	1,510	0	0	
MA-007	5th/HILL TELEPHONE RELOCATION	320	320	0	0	
MA-093	5th/HILL GAS RELOCATION	150	150	0	0	
MA-533	5th/HILL CABLE TV REPLACEMENT	5	5	0	0	
*A146	LINE-5th/HILL STA. TO 7th/FLOWER STA.	18,299	18,358	59	0	
A147	CIVIC CENTER STATION - STAGE II	12,878	12,921	43	0	
A157	5th/HILL STATION - STAGE II	13,307	13,307	0	0	
**A161	7th/FLOWER UTILITY REARRANGEMENT (MRT)	1,506	1,505	(1)	(0)	
A149	UTILITY RELOCATION & VAULT MODIFICATIONS	0		INCLUDED IN A145		
*A165	7th/FLOWER STATION - STAGE I (MRT)	23,059	23,757	698	3	REVISED UTILITY STDS \$809,000;MISC CHANGES (\$111,000)
MA-008	7th/FLOWER WESTERN UNION REPLACEMENT	40	40	0	0	
MA-A09	7th/FLOWER WATER RELOCATION	390	830	440	113	MATL SPEC INCREASE,DELAY CLAIMS, INCREASED ONSITE INSPECTION \$440,000
MA-009	7th/FLOWER POWER RELOCATION	250	250	0	0	
MA-007	7th/FLOWER TELEPHONE RELOCATION	120	120	0	0	
MA-093	7th/FLOWER GAS RELOCATION	100	100	0	0	
MA-533	7th/FLOWER CABLE TV RELOCATION	55	55	0	0	
A167	7th/FLOWER STATION - STAGE II	7,979	10,428	2,449	31	BASED ON PDCD EST OF 5/26/88 \$2,449,000
*A171	LINE-7th/FLOWER STATION TO WILSHIRE/ALVARADO STATION	26,701	26,719	18	0	
	*CONTRACT AWARDED					
	**CONTRACT COMPLETED					

I.I.A.19

METRO RAIL PROJECT

UMTA QUARTERLY REVIEW

FINANCIAL PLAN COMPARISON AND ANALYSIS (ESCALATED)
 REVISION 6A TO REVISION 6B

CONTRACT	CONTRACT DESCRIPTION	A	B	C =		COMMENTS
		3/25/88	6/24/88	B-A	D =	
		ESC \$	ESC \$	VARIANCE	(C/A)100	
		(000)	(000)	(000)	% CHANGE	
**A172	DEMOLITION OF STRUCTURE ON PARCEL A1-208	26	26	0	0	
**A173	DEMOLITION OF STRUCTURES ON PARCELS A1-221, A1-222, A1-224, AND A1-225	67	67	0	0	
*A175	WILSHIRE/ALVARADO STATION - STAGE I	23,544	23,744	200	1	CHANGE REQUEST ACTIVITY \$48,000; ADDITIONAL CLAIMS \$152,000
MA-A09	WILSHIRE/ALVARADO WATER RELOCATION	200	200	0	0	
MA-009	WILSHIRE/ALVARADO POWER RELOCATION	30	30	0	0	
MA-007	WILSHIRE/ALVARADO TELEPHONE RELOCATION	70	70	0	0	
MA-093	WILSHIRE/ALVARADO GAS RELOCATION	50	50	0	0	
MA-056	WILSHIRE/ALVARADO CALTRANS	54	54	0	0	
MA-533	WILSHIRE/ALVARADO CABLE TV RELOCATION	35	35	0	0	
A177	DEMOLITION OF STRUCTURE ON PARCEL A1-209	0		0		
A185	WILSHIRE/ALVARADO STATION RESTORATION	788	788	0	0	
A186	WILSHIRE/ALVARADO STA. SITE LANDSCAPING	116	116	0	0	
A187	WILSHIRE/ALVARADO STATION - STAGE II	8,781	8,781	0	0	
MA-002	CITY OF LOS ANGELES FY '87	1,012	1,012	0	0	
MA-002	CITY OF LOS ANGELES FY '88	1,625	1,625	0	0	
MA-002	CITY OF LOS ANGELES FY '89	2,000	2,000	0	0	
MA-002	CITY OF LOS ANGELES FY '90	1,500	1,500	0	0	
MA-002	CITY OF LOS ANGELES FY '91	1,000	1,000	0	0	
MA-094	COUNTY OF LOS ANGELES 'FY 87	50	50	0	0	
MA-094	COUNTY OF LOS ANGELES 'FY 88	85	85	0	0	
MA-094	COUNTY OF LOS ANGELES 'FY 89	150	150	0	0	
MA-094	COUNTY OF LOS ANGELES 'FY 90	150	150	0	0	
MA-005	WATER REPLENISHMENT SERVICES	300	300	0	0	

*CONTRACT AWARDED

**CONTRACT COMPLETED

PAGE 4 OF 6

DATE: 6/24/88

II.A.20

RO RAIL PROJECT

UMTA QUARTERLY REVIEW

FINANCIAL PLAN COMPARISON AND ANALYSIS (ESCALATED)
 REVISION 6A TO REVISION 6B

PAGE 5 OF 6
 DATE: 6/24/88

CONTRACT	CONTRACT DESCRIPTION	A 3/25/88 ESC \$ (000)	B 6/24/88 ESC \$ (000)	C = B-A VARIANCE (000)	D = (C/A)100 % CHANGE	COMMENTS
*A610/A115	TRACKWORK INSTALLATION	21,573	21,586	13	0	
*A612	CONTACT RAIL PROCUREMENT	2,334	2,053	(281)	(12)	CONTRACT AWARDED (\$281,000)
A615	PROTECTIVE COVERBOARD PROCUREMENT	776	515	(261)	(34)	LOW BID RECEIVED 5/11/88 (\$261,000)
*A616	RAIL FASTENER PROCUREMENT (MRT)	1,537	1,524	(13)	(1)	
*A620	AUTOMATIC TRAIN CONTROL PROCURE/INSTALL	11,227	11,308	81	1	
A630	TRACTION POWER EQUIPMENT PROCUREMENT	8,727	7,648	(1,079)	(12)	RE-EST BY MRTC BASED ON DWG REVS (\$1,079,000)
A631	TRACTION POWER EQUIPMENT INSTALLATION	6,011	5,929	(82)	(1)	
*A640	COMMUNICATIONS PROCURE/INSTALL	26,075	34,325	8,250	32	CONTRACT AWARDED \$8,250,000
*A650	PASSENGER VEHICLES PROCUREMENT	52,337	53,987	1,650	3	CONTRACT AWARDED \$1,650,000
A655	TRANSPORTATION TEST CENTER	599	629	30	5	
A660	FARE COLLECTION PROCURE/INSTALL(H840)			0	0	
A671	LOCOMOTIVE PROCUREMENT	617	617	0	0	
A672	FLAT CAR PROCUREMENT	57	59	2	4	
A675	CRANE PROCUREMENT (FOR FLAT CAR)	26	26	0	0	
A680	OPERATIONAL GRAPHICS PROCUREMENT	123	123	0	0	
A710	ESCALATORS PROCURE/INSTALL	12,239	14,338	2,099	17	RE-EST BY MRTC BASED ON DWG REVS \$2,099,000
A720	ELEVATORS PROCURE/INSTALL	1,322	1,714	392	30	TWO ELEVATORS ADDED \$242,300; UNIT COST INCR \$149,700
A730	FIXED SHOP EQUIPMENT PROCURE/INSTALL	30	30	0	0	
A732	WHEEL TRUING MACHINE	810	693	(117)	(14)	LOW BID RECEIVED (\$117,000)
A735	FREE STANDING SHOP EQUIPMENT PROCUREMENT	352	353	1	0	
*A740	VENTILATION EQUIPMENT PROCUREMENT	3,188	3,188	0	0	
*A745	TPSS-AIR HANDLING EQUIPMENT PROCUREMENT	1,358	1,358	0	0	
A750	DISPOSAL OF HAZARDOUS WASTE	0	2,358	2,358	100	NEW CONTRACT \$2,358,000
A760	SIGNS & GRAPHICS PROCUREMENT	1,354	1,354	0	0	
A770	RUBBER-TIRED VEHICLES PROCUREMENT	395	398	3	1	
A775	MOBILE EMERGENCY & MAINT. EQUIP. PROCURE	405	405	0	0	
A780	FURNITURE PROCUREMENT	207	207	0	0	
A785	FIRE SUPPRESSION EQUIPMENT PROCUREMENT	17	17	0	0	
A790	FIRST STORES & CONSUMABLES PROCUREMENT	126	126	0	0	
A795	UNINTERRUPTIBLE POWER SUPPLIES PROCURE	1,066	1,070	4	0	
H840	FARE COLLECTION	1,626	1,626	0	0	
	ART-N-TRANSIT	948	948	0	0	
*4239	TELEPHONE EQUIPMENT	0	1,356	1,356	100	NEW CONTRACT \$1,356,000
SUBTOTAL CONSTRUCTION/PROCUREMENT		578,410	597,027	18,617	3	

* CONTRACT AWARDED

II.A.21

METRO RAIL PROJECT

UMTA QUARTERLY REVIEW

FINANCIAL PLAN COMPARISON AND ANALYSIS (ESCALATED)
 REVISION 6A TO REV 6B

PAGE 6 OF 6
 DATE: 6/24/88

CONTRACT	CONTRACT DESCRIPTION	A 3/25/88 ESC \$ (000)	B 6/24/88 ESC \$ (000)	C = B-A VARIANCE (000)	D = (C/A)100 % CHANGE	COMMENTS
GENERAL CONSULTANT		160,317	160,317	0	0	
CONSTRUCTION MANAGER		74,920	79,884	4,964	7	PDCD INCREASED FIELD SUPERVSN & HOME OFFICE \$4,964,000
CONST RELATED PROF SERVS		9,714	12,559	2,845	29	BAH VHCLC PROC & SYSTM TEST \$2,966,000; ARCHEO(\$121,000)
DES. RELATED PROF. SERVS.		27,709	12,588	(15,121)	(55)	CORRECTION FOR OVER-STATEO EXPENDITURES (\$15,121,000)
AGENCY		117,511	116,541	(970)	(1)	REFLECTS ACTUALS FOR FY '88 (\$970,000)
RIGHT OF WAY		101,379	101,916	537	1	ROE INCR DUE TO DELAYS \$245,000; LEGAL & ADMIN \$292,000
OCIP		53,071	53,068	(3)	(0)	
PRELIMINARY ENGINEERING		32,800	32,800	0	0	
CONTINGENCY		94,071	83,200	(10,871)	(12)	REDUCTION DUE TO CHANGES DESCRIBED ABOVE (\$10,871,000)
SUBTOTAL OTHER COSTS		671,492	652,873	(18,619)	(3)	
SUBTOTAL CONSTRUCTION COSTS		578,408	597,027	18,619	3	
TOTAL MOS - 1		1,249,900	1,249,900	0	0	

II.A.22

METRO RAIL PROJECT

UMTA QUARTERLY REVIEW

MACS CODE	AFE DESCRIPTION	CURRENT BASELINE BUDGET (REV.6)	APPROVED BUDGET (REV.5C)	FORECASTED BUDGET (REV.6B)	ALLOCATED BUDGET	OBLIGATED TO DATE	EXPENDED TO DATE	% OBLIGATED	% EXPENDED

TOTAL LOCAL ACTIVITIES									

13.71.02	PROF. SERVICES ENG. & DES.	27,124	26,286	19,187	26,286	21,762	12,315	83%	47%
13.72.00	FORCE ACCOUNT	78,345	69,073	70,836	69,073	15,244	16,254	22%	24%
10.73.00	CONTINGENCIES	33,461	31,562	34,955	45,856	0	0	0%	0%
13.79.00	GEN. & ADMIN.	2,443	1,677	3,571	3,182	990	912	59%	54%
13.76.91	RIGHT OF WAY ACQUISITION	50,412	58,419	50,821	58,419	50,702	45,843	87%	78%
13.71.04	PROF. SERVICES CONST. MGMT.	70,899	74,962	81,917	74,962	29,785	20,769	40%	28%
13.71.05	OWNER CONTROLLED INSURANCE	0	0	0	25,524	0	0	0%	0%
13.24.92	RAILROAD RELOCATION	17,050	17,050	17,050	17,050	14,727	15,459	86%	91%
13.42.02	CONST. OF MAINT. & REP. FAC.	0	0	0	0	0	0	0%	0%
13.43.04	CONST. OF STORAGE YARD	0	0	0	0	0	0	0%	0%
13.75.95	UTILITY RELOCATIONS	0	0	0	0	0	0	0%	0%
13.33.02	CONST. OF STATIONS	948	1,123	948	71,537	653	80	58%	7%
13.23.04	SUBWAY TUNNEL CONSTRUCTION	0	0	0	14,749	2,053	0	0%	0%
13.42.06	SERVICE AND MAINT. EQUIP.	0	0	0	1,876	0	0	0%	0%
13.62.01	OTHER SUPPORTIVE SERVICES	0	0	0	0	37	37	0%	0%
13.62.08	COMMUNICATIONS EQUIPMENT	0	0	0	0	0	0	0%	0%
13.13.00	PASSENGER VEHICLES	52,934	52,263	54,616	52,263	53,987	0	103%	0%
13.32.06	FARE COLLECTION EQUIPMENT	1,911	3,112	1,626	3,112	0	0	0%	0%
	TOTAL	335,527	335,527	335,527	463,889	189,940	111,671	57%	33%

I.A.23

METRO RAIL PROJECT

UMTA QUARTERLY REVIEW

MACS CODE	AFE DESCRIPTION	CURRENT			ALLOCATED BUDGET	OBLIGATED TO DATE	EXPENDED TO DATE	% OBLIGATED	% EXPENDED
		BASELINE BUDGET (REV. 6)	APPROVED BUDGET (REV. 5C)	FORECASTED BUDGET (REV. 6B)					
----- TOTAL UMTA PROJECT -----									
13.42.11	SUPPORT VEHICLES	90	90	90	90	90	90	100%	100%
13.42.20	SUPPORT EQUIPMENT	1,606	2,802	1,770	2,802	1,599	1,228	57%	44%
13.42.07	MIS EQUIPMENT	3,605	4,487	3,672	4,336	2,123	2,058	47%	46%
13.76.91	RIGHT OF WAY ACQUISITION	34,762	30,332	34,045	30,332	31,840	30,535	105%	101%
13.71.02	PROF. SERVICES ENG. & DES.	177,771	177,771	177,771	177,771	176,120	168,573	99%	95%
13.71.04	PROF. SERVICES CONST. MGMT.	10,526	10,526	10,526	10,526	10,834	10,834	103%	103%
13.71.05	OWNER CONTROLLED INSURANCE	52,746	47,089	53,068	21,565	15,336	13,086	33%	28%
13.72.00	FORCE ACCOUNT	28,431	28,431	28,431	28,431	28,090	28,090	99%	99%
13.79.00	OTHER SUPPORTING SERVICES	9,618	11,420	9,317	11,420	4,934	4,888	43%	43%
13.79.00	WATER REPLENISHMENT	300	300	300	300	300	0	100%	0%
13.79.00	GEN. AND ADMIN.	6,658	4,500	7,549	3,000	3,791	2,521	84%	56%
10.73.00	CONTINGENCIES	80,280	66,474	48,245	52,175	0	0	0%	0%
10.77.00	REVENUE FINANCING	0	0	0	0	0	(319)	0%	0%
13.76.93	DEMOLITION	421	426	421	426	421	417	99%	98%
13.33.02	CONSTRUCTION OF STATIONS	260,056	259,541	276,187	189,127	177,815	34,609	69%	13%
13.42.02	CONST. OF MAINT. & REP. FAC.	25,694	24,853	25,007	24,853	24,833	5,516	100%	22%
13.43.04	CONST. OF STOR. YD & LEADS	47,262	63,513	39,375	63,513	37,678	0	59%	0%
13.23.04	SUBWAY TUNNEL CONSTRUCTION	118,754	118,488	131,961	103,739	96,686	28,268	82%	24%
13.75.95	UTILITY RELOCATIONS	16,615	16,866	17,068	16,866	11,834	4,430	70%	26%
13.33.02	CONST. OF PARKING FACILITY	0	0	0	0	0	0	0%	0%
13.42.06	SERVICE AND MAINT. EQUIP.	1,876	1,876	2,581	0	0	0	0%	0%
13.62.01	AUTOMATIC TRAIN CONTROL	11,227	22,649	11,308	22,649	11,017	0	49%	0%
13.62.08	COMMUNICATIONS EQUIPMENT	26,075	22,090	35,681	22,090	34,365	49	156%	0%
	TOTAL	914,373	914,373	914,373	786,011	669,706	334,873	73%	37%

I.L.A. 24

METRO RAIL PROJECT

UMTA QUARTERLY REVIEW

MACS CODE	AFE DESCRIPTION	CURRENT	APPROVED	FORECASTED	ALLOCATED BUDGET	OBLIGATED TO DATE	EXPENDED TO DATE	% OBLIGATED	% EXPENDED
		BASELINE BUDGET (REV.6)	BUDGET (REV.5C)	BUDGET (REV.6B)					
----- TOTAL UNDERTAKING -----									
13.42.11	SUPPORT VEHICLES	90	90	90	90	90	90	100%	100%
13.42.20	SUPPORT EQUIPMENT	1,606	2,802	1,770	2,802	1,599	1,228	57%	44%
13.42.07	MIS EQUIPMENT	3,605	4,336	3,672	4,336	2,123	2,058	49%	47%
13.76.91	RIGHT OF WAY ACQUISITION	85,174	88,751	84,866	88,751	82,542	76,378	93%	86%
13.71.02	PROF. SERVICES ENG. & DES.	204,895	204,057	196,958	204,057	197,882	180,888	97%	89%
13.71.04	PROF. SERVICES CONST. MGMT.	81,425	85,488	92,443	85,488	40,619	31,603	48%	37%
13.71.05	OWNER CONTROLLED INSURANCE	52,746	47,089	53,068	47,089	15,336	13,086	33%	28%
13.24.92	RAILROAD RELOCATION	17,050	17,050	17,050	17,050	14,727	15,459	86%	91%
13.72.00	FORCE ACCOUNT	106,776	97,504	99,267	97,504	43,334	44,344	44%	45%
13.79.00	OTHER SUPPORTING SERVICES	9,618	11,420	9,317	11,420	4,971	4,925	44%	43%
13.79.00	GEN. AND ADMIN.	9,101	6,177	11,120	6,182	4,781	3,433	77%	56%
10.73.00	CONTINGENCIES	113,741	98,036	83,200	98,031	0	0	0%	0%
10.77.00	REVENUE FINANCING	0	0	0	0	0	(319)	0%	0%
13.62.08	COMMUNICATION EQUIPMENT	26,075	22,090	35,681	22,090	34,365	49	156%	0%
13.79.00	WATER REPLENISHMENT	300	300	300	300	300	0	100%	0%
13.76.93	DEMOLITION	421	426	421	426	421	417	99%	98%
13.33.02	CONSTRUCTION OF STATIONS	261,004	260,664	277,135	260,664	178,468	34,689	68%	13%
13.42.02	CONST. OF MAINT. & REP. FAC.	25,694	24,853	25,007	24,853	24,833	5,516	100%	22%
13.43.04	CONST. OF STOR. YD & LEADS	47,262	63,513	39,375	63,513	37,678	0	59%	0%
13.23.04	SUBWAY TUNNEL CONSTRUCTION	118,754	118,488	131,961	118,488	98,739	28,268	83%	24%
13.75.95	UTILITY RELOCATIONS	16,615	16,866	17,068	16,866	11,834	4,430	70%	26%
13.42.06	SERVICE AND MAINT. EQUIP.	1,876	1,876	2,581	1,876	0	0	0%	0%
13.62.01	AUTOMATIC TRAIN CONTROL	11,227	22,649	11,308	22,649	11,017	0	49%	0%
13.13.00	PASSENGER VEHICLES	52,934	52,263	54,616	52,263	53,987	0	103%	0%
13.32.06	FARE COLLECTION EQUIPMENT	1,911	3,112	1,626	3,112	0	0	0%	0%
13.33.02	CONST. OF PARKING FACILITY	0	0	0	0	0	0	0%	0%
	GRAND TOTAL	1,249,900	1,249,900	1,249,900	1,249,900	859,646	446,544	69%	36%

II.A.25

II. . OVERALL PROJECT REPORT

B. CONSTRUCTION AND PROCUREMENT CONTRACTS STATUS

Contract Activity Summary -
Quarterly and Cumulative

Contract Activity Summary - Dates

Ninety-Day Look Ahead

II. OVERALL PROJECT REPORT

B. CONSTRUCTION AND PROCUREMENT CONTRACTS STATUS

Contract Activity Summary - Quarterly and Cumulative

06/24/88

<u>Activity</u>	<u>This Quarter</u>	<u>Total to Date*</u>
-----------------	---------------------	-----------------------

CONSTRUCTION CONTRACTS

o Advertised	2	19
o Bids Opened	4	19
o Awarded	4	18
o Notice to Proceed issued	2	16
o Completed	0	5
o Refer to Contracts Chart (Figure 1) for tabulation of schedule data		

25

PROCUREMENT CONTRACTS (PROCURE/INSTALL)

o Advertised	2	13
o Bids Opened	3	12
o Awarded	3	7
o Notice to Proceed issued	2	6
o Completed	0	0

Bid experience to date continues the favorable trend of low bids being well under the engineer's estimates.

MASTER AGREEMENT WORK

o Work Orders issued	3	47
o Work Orders completed	0	1
o Work Orders in progress	46	46

* Total to date does not include contracts readvertised and for which bids were reopened.

II. OVERALL PROJECT REPORT

B. CONSTRUCTION AND PROCUREMENT CONTRACTS STATUS

Contracts Activity Summary - Dates

<u>Contract Number</u>	<u>Description</u>	<u>Advertise Date</u>	<u>Bid Opening Date</u>	<u>Award Date</u>	<u>Notice to Proceed</u>	<u>Completion Date</u>
A123	Demolition of structure on Parcel A1-009	25 Aug 86	24 Sept 86	23 Oct 86	24 Nov 86	23 Feb 87
A149	5th/Hill Station, Utility Relocation and Vault Modification	25 Aug 86	30 Sep 86	Scope Combined with Contract A145		
A121	Maintenance-of-Way Shop Building	08 Sep 86	25 Nov 86	08 Jan 87	27 Feb 87	29 Jul 88
A172	Demolition of structure on Parcel A1-208	08 Sep 86	12 Nov 86	11 Dec 86	12 Jan 87	04 Mar 87
A173	Demolition of structures on Parcels A1-221, A1-222, A1-224 & A1-225	08 Sep 86	12 Nov 86	11 Dec 86	19 Jan 87	14 Apr 87
A171	Line Section, 7th/Flower to Wilshire/Alvarado	15 Sep 86	12 Dec 86	08 Jan 87	02 Feb 87	24 Jul 89
A161	7th/Flower Station Utility Arrangement	29 Sep 86	26 Nov 86	17 Dec 86	19 Jan 87	16 Nov 87

06/24/88

II.B.2

SCRTD LIBRARY

METRO RAIL PROJECT

UMTA QUARTERLY REVIEW

Contract Number	Description	Advertise Date	Bid Opening Date	Award Date	Notice to Proceed	Completion Date
A141	Line Section, Union Station to 5th/Hill Civic Center Station, Stage I	29 Sep 86	14 Jan 87	26 Feb 87	16 Mar 87	07 May 90
A145	Utility Relocations and Vault Modification 5th/Hill Station, Stage I	24 Nov 86	03 Feb 87	12 Mar 87	02 Apr 87	22 Jun 90
A146	Line Section, 5th/Hill Station to 7th/Flower Station	01 Dec 86	12 Feb 87	12 Mar 87	06 Apr 87	30 Aug 89
A134	Demolition of Structure on Parcel A1-032	12 Feb 87	02 Apr 87	23 Apr 87	13 May 87	29 May 87
A175	Wilshire/Alvarado Station, Stage I	02 Mar 87	02 Jun 87	25 Jun 87	27 Jul 87	09 Mar 90
A650	Passenger Vehicles	16 Mar 87	15 Jul 87	<u>28 Apr 88</u>	<u>01 Jun 88</u>	16 Jan 92
A640	Communications <i>Bectel</i>	15 Apr 87	26 Aug 87	09 Jun 88	07 Jul 88	25 Nov 91
A616	Direct Fixation Rail Fasteners	11 May 87	02 Jul 87	23 Jul 87	14 Oct 87	14 Sep 90
A112	Main Shop Building	18 May 87	11 Aug 87	10 Sep 87	28 Sep 87	17 Mar 89

I.I.B.3

METRO RAIL PROJECT

UMTA QUARTERLY REVIEW

<u>Contract Number</u>	<u>Description</u>	<u>Advertise Date</u>	<u>Bid Opening Date</u>	<u>Award Date</u>	<u>Notice to Proceed</u>	<u>Completion Date</u>
A620	Automatic Train Control	01 Jul 87	23 Sep 87	12 Nov 87	01 Mar 88	16 Apr 92
<u>A135</u>	Union Station, Stage I	10 Aug 87	27 Apr 88	26 May 88	<u>11 Jul 88</u>	29 Apr 91
A610/ A115	Trackwork Installation/ Yard Storage Area	13 Aug 87	26 Oct 87	19 Nov 87	04 Jan 88	06 Nov 90
A165	7th/Flower Station, Stage I	26 Oct 87	01 Dec 87	17 Dec 87	05 Jan 88	28 Sep 90
A745	Air Handling Equipment	02 Nov 87	12 Jan 88	28 Jan 88	16 Feb 88	30 Sep 91
A740	Ventilation Equipment	21 Dec 87	26 Jan 88	11 Feb 88	01 Mar 88	30 Sep 91
<u>A612</u>	Contact Rail	21 Dec 87	10 Mar 88	14 Apr 88	<u>01 Jun 88</u>	23 Feb 90
A795	Uninterruptible Power Supplies	21 Dec 87	07 Jun 88	14 Jul 88	01 Aug 88	24 Dec 90
A630	Traction Power Equipment	18 Jul 88	18 Aug 88	8 Sep 88	27 Sep 88	20 Jul 90
<u>A130</u>	Yard Leads and Transfer Zone	11 Jan 88	20 May 88	<u>09 Jun 88</u>	<u>01 Jul 88</u>	08 Jun 90

II.B.4

METRO RAIL PROJECT

UMTA QUARTERLY REVIEW

<u>Contract Number</u>	<u>Description</u>	<u>Advertise Date</u>	<u>Bid Opening Date</u>	<u>Award Date</u>	<u>Notice to Proceed</u>	<u>Completion Date</u>
A143	Water Treatment Chemicals	29 Feb 88	28 Mar 88	<u>14 Apr 88</u>	<u>23 May 88</u>	01 Apr 91
A615	Protective Coverboard	17 Mar 88	11 May 88	14 Jul 88	11 Aug 88	23 Feb 90
A144	Water Treatment Plant Operation	04 Apr 88	02 May 88	<u>23 Jun 88</u>	<u>01 Jul 88</u>	01 Apr 91
A720	Elevators	18 Apr 88	21 Jun 88	14 Jul 88	26 Aug 88	22 Aug 91
A732	Wheel Truing Machine	01 Jun 88	11 Jul 88	28 Jul 88	10 Aug 88	01 May 91
A710	Escalators	06 Jun 88	12 Aug 88	08 Sep 88	29 Sep 88	22 Aug 91

I.I.B.5

II. OVERALL PROJECT REPORT

B. CONSTRUCTION AND PROCUREMENT CONTRACTS STATUS

Ninety-Day Look Ahead

06/24/88

II.B.6

<u>CONTRACT NUMBER</u>	<u>DESCRIPTION</u>	<u>PLANNED Apr-Jun 1988</u>	<u>ACTUAL Apr-Jun 1988</u>	<u>FORECAST Jul-Sep 1988</u>
A112	Main Shop Building	Continue underground utility work; continue installation and back-filling of HDPE membrane; begin concrete slabs; continue construction of pits.	Continued underground utility work; completed installation and back-filling of HDPE membrane; began concrete slabs; continued construction of pits; began erection of structural steel.	Continue construction of pits; continue erection of structural steel; continue underground utility work; begin installation of electrical conduit, duct, and plumbing hangers in second floor.
A121	Maintenance-of-Way	Finish work on second floor; complete elevator testing; complete painting, mechanical, installation of the irrigation system; final clean-up and contract punchlist.	Continued finish work on second floor; completed elevator testing; continued electrical work; completed ceiling and drywall installation; contract substantially complete.	Initiate contract closeout procedures; complete acceptance of building; file a notice of completion with the City of Los Angeles.
A130	Yard Leads and Transfer Zone	Open bids; begin proposal evaluation; award contract.	Opened bids; began proposal evaluation; awarded contract.	Issue NTP; begin contract mobilization, demolition, and drawing submittals.

METRO RAIL PROJECT

UMTA QUARTERLY REVIEW

CONTRACT NUMBER	DESCRIPTION	PLANNED Apr-Jun 1988	ACTUAL Apr-Jun 1988	FORECAST Jul-Sep 1988
A135	Union Station, Stage I	Open bids; begin proposal evaluation; award and issue contract NTP.	Opened bids; began proposal evaluation; awarded contract. Conditional NTP was issued.	Issue full NTP; begin contract mobilization and drawing submittals; complete demolition of mail dock; begin demolition of boiler room; begin removal of asbestos from boiler room. <i>July 11</i>
A141	Line Section Union Station to 5th/Hill Civic Center Station, Stage I	Continue water treatment plant construction; continue instrumentation installation; excavate Civic Center Station; begin LAUPT temporary improvements; begin installation of dewatering wells.	Completed water treatment plant construction; continued instrumentation installation; continued Civic Center Station excavation; continued LAUPT temporary improvements; completed installation of LAUPT upper parking lot; completed AMTRAK machine shop; installation of dewatering wells delayed by availability of the shaft access area.	Continue instrumentation installation; continue excavation of Civic Center Station; continue LAUPT temporary improvements; begin installation of dewatering wells; begin installation of Union Station tunnel access shaft.
A145	Utility Relocation and Vault Modifications, 5th/Hill Station, Stage I	Complete vault modifications; complete utility relocation; complete soldier pile installation; begin station excavation and placement of deck beams; complete traffic detour switchover on Hill Street.	Completed vault modifications and utility relocations; continued soldier pile installation; began installation of elevator, and began new closure at subway Terminal Building; continued installation of sewer line "A"; began fabrication of deck beams; completed traffic detour switchover on Hill Street.	Complete pile installation; begin deck beam installation and begin station excavation; complete closure wall work; complete installation of storm drains and sanitary sewers; complete specialty sidewalk along 5th Street at Equitable Building.

II.B.7

METRO RAIL PROJECT

UMTA QUARTERLY REVIEW

<u>CONTRACT NUMBER</u>	<u>DESCRIPTION</u>	<u>PLANNED Apr-Jun 1988</u>	<u>ACTUAL Apr-Jun 1988</u>	<u>FORECAST Jul-Sep 1988</u>
A146	Line Section 5th/Hill Station to 7th/Flower Station	Complete tunneling through the test section for compaction grouting; begin driving tunnel in AL alignment.	Completed tunneling through the test section for compaction grouting; completed manufacturing of tunnel support; completed re-breasting of AL tunnel face; contractor stopped work on AL alignment pending resolution of contractual dispute; working to resolve contractual dispute.	Continue maintenance of ventilation and dewatering system; resolve contractual dispute; mobilize for second test section.
A165	7th/Flower Station, Stage I	Locate and support utilities on Flower Street; install soldier beams, cap/beams and wales; demolish vault and begin installation of closure wall at Bank of America; begin deck beam installation on Flower Street.	Located and supported utilities on Flower; began installation of soldier piles, cap/beams, and wales; demolished vault and installed closure wall at Bank of America; began installing deck beams on Flower Street; began utility relocation on south side of 7th Street.	Begin pile and deck beam installation on 7th Street; underpin 818 W. 7th and Bank of America; install shoring at Hamburger Hamlet; demolish vault; pour footing and lower basement walls; complete installing deck beams on Flower Street.
A171	Line Section, 7th Flower to Wilshire/Alvarado	Complete tunneling of the left alignment; move tunnel machine; reassemble and start tunneling of the right alignment.	Completed tunneling of the left alignment on 5/18/88; moved tunnel machine; began reassembly of machine.	Complete assembly of tunnel machine; start right alignment tunneling and complete excavation; start cross-passage excavation.

I.B.8

METRO RAIL PROJECT

UMTA QUARTERLY REVIEW

CONTRACT NUMBER	DESCRIPTION	PLANNED <u>Apr-Jun 1988</u>	ACTUAL <u>Apr-Jun 1988</u>	FORECAST <u>Jul-Sep 1988</u>
A175	Wilshire/ Alvarado Station, Stage I	Continue soldier pile drilling and installation; begin excavation.	Continued soldier pile drilling and installation; began excavation.	Continue lagging and tie-back installation; continue station excavation.
A610/ A115	Trackwork/ Installation/ Yard Storage Area	Continue utility relocation work and rough site grading; continue submittal and review cycle; demolish Soule Building; construct heavy car cleaning foundation and slab.	Continued utility relocation work and rough site grading; continued the submittal and review cycle; demolition of the Soule Building was delayed; this building is housing District construction offices; these offices will be relocated in the next quarter; construction of the heavy car cleaning foundation and slab was delayed due to underground interferences.	Continue utility relocation work and rough site grading; demolish Soule Building; construct light tower footings; construct heavy car cleaning foundation and slab.
A612	Contact Rail Award contract; issue NTP.	Awarded contract; issued NTP.	Awarded contract; issued NTP.	Hold initial activities meeting; begin submittal and review cycle.

II.B.9

METRO RAIL PROJECT

UMTA QUARTERLY REVIEW

<u>CONTRACT NUMBER</u>	<u>DESCRIPTION</u>	<u>PLANNED Apr-Jun 1988</u>	<u>ACTUAL Apr-Jun 1988</u>	<u>FORECAST Jul-Sep 1988</u>
A615	Protective Coverboard	Hold pre-bid conference; open bids; begin proposal evaluation.	Held pre-bid conference; opened bids; began proposal evaluation.	Award contract; issue NTP.
A616	Direct Fixation Rail Fasteners	Continue manufacturing and testing of fasteners; deliver the first 10,000 fasteners.	Continued testing of fasteners; delivered the first 10,000 track inserts.	Complete testing and begin manufacturing of fasteners; deliver the first 10,000 fasteners.
A620	Automatic Train Control	Continue submittal and review cycle.	Continued review of contractor submittals and attended a quarterly progress review.	Continue review and submittal cycle; hold preliminary design review.
A630	Traction Power Equipment	Open bids; begin proposal evaluation; award contract; issue NTP.	Opened bids; completed proposal evaluation; prepared to readvertise the contract package due to non-compliance of bidders	Open bids; begin proposal evaluation; award contract and issue NTP.

II.B.10

METRO RAIL PROJECT

UMTA QUARTERLY REVIEW

<u>CONTRACT NUMBER</u>	<u>DESCRIPTION</u>	<u>PLANNED Apr-Jun 1988</u>	<u>ACTUAL Apr-Jun 1988</u>	<u>FORECAST Jul-Sep 1988</u>
A640	Communications	Award contract; issue NTP.	Awarded contract; award delayed due to protracted negotiations and resulting changes in contract provisions; NTP delayed as a result.	Hold initial activities meeting; issue NTP; begin submittal and review cycle.
A650	Passenger Vehicles	Award contract; issue NTP.	Awarded contract; issued NTP; held initial activities meeting.	Begin submittal and review cycle.
A710	Escalators	Readvertise contract package due to non-responsive bids.	Readvertised the contract package and held a pre-bid conference.	Award contract; issue NTP.
A720	Elevators	Advertise contract package; open bids; begin proposal evaluation.	Advertised the contract package; opened bids; began proposal evaluation.	Reject bids due to non-compliance; combine contract package with Contract A710.

II.B.11

METRO RAIL PROJECT

UMTA QUARTERLY REVIEW

<u>CONTRACT NUMBER</u>	<u>DESCRIPTION</u>	<u>PLANNED</u> <u>Apr-Jun 1988</u>	<u>ACTUAL</u> <u>Apr-Jun 1988</u>	<u>FORECAST</u> <u>Jul-Sep 1988</u>
A740	Ventilation Equipment	Continue contract mobilization and submittal and review cycle.	Reviewed and resubmitted shop drawings; evaluated fan performance data and design accuracy of companion flanges; reviewed damper activation design.	Begin delivery of companion flanges; continue production of models of fan and motor.
A745	Air Handling Equipment	Continue contract mobilization and submittal and review cycle.	Continued review of shop drawings; continued planning field accessibility for equipment; approved AHU acoustic data.	Study final construction phasing for AHU; prepare pre-production model; continue final design.
A795	Uninterruptible Power Supplies	Readvertise contract package due to bidders qualifying their bids.	Readvertised contract; opened bids.	Award contract; issue NTP; begin submittal and review cycle.
H840	Fare Collection (Joint Procurement with LACTC)	Continue submittal and review cycle; start test preparation at the El Monte Bus Facilities.	Continued submittal and review cycle; started test preparation at the El Monte Bus Facilities.	Continue submittal and review cycle; continue test preparation at the El Monte Bus Facilities; participate in the Critical Design Review.

II.B.12

SCRIPTS LIBRARY

II. OVERALL PROJECT REPORT

C. REAL ESTATE STATUS

METRO RAIL PROJECT

UMTA QUARTERLY REVIEW

II. OVERALL PROJECT REPORT

C. REAL ESTATE STATUS

06/24/88

CCU	NO. OF PARCELS	NUMBER CERT'D	BOARD APPROVED	APPR'SLS PENDING	JUST COMP APPROVED	OFFERS MADE	AGR'MNT SIGNED	CONDEM-NATION	CLOSED/ ROP	PARCELS AVAILABLE	PARCELS NOT AVAILABLE	RELOCATIONS COMPLETED	CONSTRUCTION NTP DATE	NOTES
A112	1	1	1	0	1	1	1	0	1	1	0	4	07/23/87	CLOSED
A130	16	16	16	0	16	16	12	3	15	15	1	3	07/01/88	(1)
A135	7	7	7	0	7	7	5	2	7	7	0	0	07/11/88	(2)
A141	19	19	19	0	19	19	18	0	18	18	1	0	03/14/87	(3)
A145	13	13	13	0	13	13	12	1	13	13	0	0	04/02/87	CLOSED
A146	11	11	11	0	11	11	4	7	11	11	0	0	04/06/87	CLOSED
A165	3	3	3	0	3	3	1	2	3	3	0	0	01/05/88	CLOSED
A171	14	14	14	0	14	14	13	1	14	14	0	5	02/02/87	CLOSED
A175	10	10	10	0	10	10	5	5	10	10	0	40	07/27/87	CLOSED
A610	1	1	1	0	1	1	1	0	1	1	0	0	01/04/88	CLOSED
TOTAL	95	95	95	0	95	95	72	21	95	95	2	52		

II.C.1

SUMMARY REAL ESTATE STATUS REPORT
PAGE 2

NOTES:

(1) All open parcels were added as a result of the alignment change. The current status is as follows:

A1-008 (Santa Fe Railway) - Parcel available under a right-of-entry pending final settlement of the acquisition offer.

A1-013 (Viertel) - Parcel will be available under a court order of possession effective 9/1/88.

A1-037 (Maier Brewing) - Parcel available under a right-of-entry pending execution of final settlement documents.

Also open is a sub-parcel.

A1-017-1 (Santa Fe Railway) - Parcel available under a right-of-entry pending final settlement of the acquisition offer.

(2) Master Agreement with railroads executed which provides for phased access to real estate parcels when required by the construction contractor.

(3) Open parcel is A1-138 (Los Angeles Times). Bus turnout not needed for current contract. Presently in appraisal review.

II. OVERALL PROJECT REPORT

D. ENGINEERING STATUS

II. OVERALL PROJECT STATUS REPORT

D. ENGINEERING STATUS

Facilities

6/24/88

<u>UNIT NO.</u>	<u>DESCRIPTION</u>	<u>TOTAL % COMPLETE</u>	<u>100% COMPLETION DATE</u>
A111	Santa Fe Avenue Restoration	90	06/29/90
A116	Yard Site Security Fencing	90	01/05/89
A117	Yard Site Lighting	90	09/02/88
A118	Yard Site Landscaping	90	06/29/90
A124	Ducommon and Jackson Streets Restoration	0	06/29/90
A136	Union Station, Stage II	75	08/23/89
A138	Union Station Sitework	30	08/03/90
A139	Union Station Site Landscaping	30	08/03/90
A147	Civic Center Station, Stage II	95	04/20/89
A157	5th/Hill Station, Stage II	95	06/29/89
A167	7th/Flower Station, Stage II	90	11/14/88
A185	Wilshire/Alvarado Sitework	95	03/06/90
A186	Wilshire/Alvarado Site Landscaping	95	03/06/90
A187	Wilshire/Alvarado Station, Stage II	95	05/05/89

D. ENGINEERING STATUS

Systems

6/24/88

<u>UNIT NO.</u>	<u>DESCRIPTION</u>	<u>TOTAL % COMPLETE</u>	<u>100% COMPLETION DATE</u>
A631	Traction Power Installation	99	10/30/88
A671	Locomotive	90	12/16/88
A672	Flat Car Procurement	0	11/02/90
A675	Crane Procurement for Flat Car	0	11/02/90
A680	Operations Graphics	40	03/24/89
A732	Wheel Truing Machine	100	05/28/88
A760	Signs and Graphics	85	03/09/89
A780	Furniture	0	on hold

II. OVERALL PROJECT REPORT

E. CITY TASK FORCE

II. OVERALL PROJECT STATUS REPORT

E. STATUS OF CRITICAL ELEMENTS

City Task Force

6/24/88

This item is included in the August 1988, 6th Edition report on "Status of Environmental Mitigation Measures for Los Angeles Metro Rail Project, Minimum Operable Segment (MOS-1)." That report, referenced in Section III below, contains Mitigation Measures SC1 through SC14, which give the status of District actions to comply with the recommendations of the City of Los Angeles' Independent Technical Review Committee.

II. OVERALL PROJECT REPORT

F. VALUE ENGINEERING REPORTS

II. OVERALL PROJECT REPORT

F. VALUE ENGINEERING EFFORTS

06/24/88

There were no value engineering submittals during this period. To date, three VE proposals were submitted. One was accepted for a total value of \$17,690.

II. OVERALL PROJECT REPORT

G. PROBLEM AREAS

1. Groundwater

2. Access to Los Angeles Union Passenger Terminal (LAUPT)

3. Union Station Baggage Handling Facility

1. Completion & start up of water treatment plant
Awarded contract to operate the plant
2. Tunnel shaft almost completed
Lower level parking almost completed
H₂O dumped into LA River after treated
3. Is now signed

II. OVERALL PROJECT STATUS

G. PROBLEM AREAS

Groundwater

06/24/88

The initial plant start-up of the groundwater treatment plant facility began June 21, 1988.

The District advertised and awarded two contracts relating to the facility. Contract A143, Chemical and Materials, was awarded to Stauffer Chemical Co. and Calgon Carbon Corporation on April 14, 1988, and Hondo Chemical, Inc., on July 28, 1988. This contract will supply activated carbon, sulfuric acid, and caustic soda. The fourth chemical, hydrogen peroxide, will be provided by Contract A141, Union Station, 5th/Hill, Civic Center I, as required in the contract specifications.

Contract A144, Operation and Maintenance of the facility, was awarded to Operations Consultants, Inc., on June 23, 1988. The NTP is scheduled for August 5, 1988.

II. OVERALL PROJECT REPORT

G. PROBLEM AREAS

Access to Los Angeles Union Passenger Terminal (LAUPT)

06/24/88

The master agreement for access to Union Station was executed and has an effective date of November 3, 1987.

The following construction as a prerequisite to full access for Metro Rail construction is underway or completed.

- a. Construct a temporary baggage ramp to relocate Amtrak's access from the historical ramp to allow for its demolition (completed).
- b. Construct a "Butler" type building to relocate Amtrak's machine shop which is presently under the historical ramp (completed).
- c. Construct a parking lot in the track apron area (completed) and reconfigure present parking at street level in order to relocate parking to allow the Metro Rail contractor access to the northwest parking lot and tunnel access area (underway).

The District has full access to LAUPT for the A141 contractor except for the northwest portion of the lower level parking lot, which is pending completion of reconfiguration work (item c above).

Agreement was reached with Amtrak and LAUPT on full access for the A135 contractor. The Agreement is executed and in full force and effect.

II. OVERALL PROJECT STATUS

G. PROBLEM AREAS

Union Station and Baggage Handling Facility

06/24/88.

The Union Station ticketing/baggage/crew base facility is being relocated due to impact by Contract A135, Union Station. Design submittals of the new facility have been reviewed by LAUPT and AMTRAK at the 30%, 60%, and 90% completion levels. The 100% design submittal will be issued July 5, 1988. Design for the demolition work has been completed and approved by the railroads.

Construction of this facility will be in two phases: (1) demolition of the existing Union Station Boiler Room equipment and certain structures is scheduled to begin in August 1988; (2) construction of the new facility is scheduled to begin in September 1988 and be completed in May 1989. All construction will be part of Contract A135.

More Problems

135/141 - Behind Schedule

*146 - Contractor has not worked
~~since~~ since April*

III. ENVIRONMENTAL IMPACT MITIGATION MEASURES

III. ENVIRONMENTAL IMPACT MITIGATION MEASURES

Minimum Operable Segment (MOS-I)

6/24/88

The Mitigation Measures Status Report (6th Edition), August 1988 is available for review and discussion.

RTD asked to change
the mitigation measures
report to an exception
report and shorten.
RTD will make a
suggestion in writing.

IV. LRT/MRT INTERRELATED SCHEDULE ISSUES

IV. LRT/MRT INTERRELATED SCHEDULE ISSUES

<u>CONTRACT NUMBER</u>	<u>DESCRIPTION</u>	<u>INTERFACE</u>	<u>STATUS</u>
A161	7th/Flower Utility Rearrangement/Relocation	Supports total utility requirements of integrated 7th/Flower Station.	Contract complete.
A165	7th/Flower Station, Stage I	MRT to complete the LRT Station Shell.	The contractor is on schedule with no major problems or delays. The District is continuing to work with the contractor to allow earlier access for the Stage II contractor.
A167	7th/Flower Station, Stage II	MRT to complete the electrical and finish work so LRT and MRT contractors can proceed to pull cable for signal and communication equipment.	Stage II design is underway. This contract is scheduled to be advertised during the fourth quarter of 1988. Contractual milestones will be identified for both LRT and MRT access.
A616	Direct Fixation Rail Fasteners	District management of contract to ensure delivery of product to support LRT rail installation.	The first delivery of fasteners for LRT was rescheduled for mid August 1988.
A630	Traction Power	District management of contract to ensure delivery of equipment to support LRT testing schedule.	The contract was readvertised due to non-responsive bids; the NTP was rescheduled to September 1988. There is no impact to LRT delivery requirements.

TV 1

METRO RAIL PROJECT

UMTA QUARTERLY REVIEW

<u>CONTRACT NUMBER</u>	<u>DESCRIPTION</u>	<u>INTERFACE</u>	<u>STATUS</u>
A631	Traction Power Equipment Installation	District management of contract to ensure installation of equipment to support LRT milestone.	The contract is due to be advertised in October 1988. There is no impact to LRT installation requirements.
A640	Communication	District management of contract to ensure design, delivery, installation, and testing of communications equipment for the LRT system.	The contract was awarded on June 9, 1988. NTP is scheduled for July 7, 1988.
A710	Escalators	District management of contract to ensure delivery and installation of escalators to support LRT milestones.	The contract package was re-advertised June 6, 1988. Bid opening has been rescheduled for August 12, 1988. There is no impact to LRT delivery requirements.
A720	Elevators	District management of contract to ensure delivery and installation of elevators to support LRT milestones.	Bids were opened in June. The one bid was non-responsive. This contract will be combined by addendum with the A710 contract. There is no impact to LRT delivery requirements.
A740	Ventilation Equipment	District management of contract to ensure delivery of equipment and completion of mechanical equipment rooms for LRT Station.	The contractor is on schedule with LRT required equipment.

<u>CONTRACT NUMBER</u>	<u>DESCRIPTION</u>	<u>INTERFACE</u>	<u>STATUS</u>
A760	Signs and Graphics	District management of contract to ensure completion of signs and graphics to support LRT milestones.	Scheduled to be advertised during the first quarter of 1989.
A795	Uninterruptible Power Supplies	District management of contract to ensure delivery of equipment to support LRT milestones.	The contract was readvertised on May 9, 1988. Award is scheduled for July 14, 1988, with NTP scheduled for August 1, 1988. There is no impact to LRT delivery requirements.

IV. LRT/MRT INTERRELATED SCHEDULE ISSUES

Impact of MRT Schedule Changes on LRT

06/24/88

Five scheduling interface meetings were held this quarter between SCRTD representatives and LACTC representatives to identify areas for schedule improvement in order to reduce the impact on LACTC testing and start-up. The major areas of concern are the Contract A167, Stage II, finish requirements that must be completed in the MRT and LRT stations to allow sufficient time for the completion of systems installations by LACTC and SCRTD.

The key LRT/MRT schedule interface concerns are: LRT station area limited access, LRT station area full access, MRT station area Stage II access, and full support of testing and start-up of the LRT and MRT portions of the combined station.

LRT Station Area Limited Access. Access to the southern portion of the LRT station is currently scheduled for July 6, 1989. This area is south along Flower Street from 7th to 8th Street. This provides for access to room areas, platform, trackway, and stairways. Work will include mechanical, electrical, HVAC, and architectural finish. This work will be performed by the Metro Rail Stage II contractor. At the same time, the trackway area will be available to the LRT contractor.

LRT Station Area Full Access. Full access to the LRT station is currently scheduled for November 3, 1989. This provides for access to the balance of the LRT station, including room areas, elevator hoistways, trackway, bridge, and entrances. Work will include preparation of the communications and signal rooms, preparation of the auxiliary power room and battery room, and preparation of elevator and escalator areas. This work will be performed by the Metro Rail Stage II contractor. At the same time, LACTC will be installing track, signal and communication equipment, and cable.

MRT Station Area Access. Full access for the Stage II contractor for the MRT station is currently scheduled for April 3, 1990. This provides for access to the entire Metro Rail station, including elevator hoistways, escalator areas, platform area, entrances, rooms, and passageways. Work will include masonry, electrical, mechanical, HVAC, and architectural finish activities. This work will be performed by the Metro Rail Stage II contractor, with an emphasis on completing those portions of the Metro Rail station that are required to support the testing and start-up activities to be performed by LACTC.

Station Testing and Start-up. Full support for LRT station area testing and start-up is currently scheduled for late 1990. Testing was previously scheduled to start July 1, 1990.

V. DBE

V. DBE

06/24/88

The DBE Report was not available at time of print.

METRO RAIL PROJECT

UMTA QUARTERLY REVIEW MEETING

V. DEE PROJECT STATUS REPORT

A. FACILITIES CONTRACTS

DATE: 30-Jun-88

CONTRACT/CONTRACTOR DESCRIPTION	CONTRACT AWARD			PAID TO DATE		DEE PARTICIPATION TO DATE	
	DATE (a)	\$ VALLE (b)	% (c)	\$ VALLE (d)	% (e)	% WORK COMPLETED (d)/(b)x100	% \$ PAID COMPLETED (d)/(b)x100
A112 MAIN SHOP BLDG.							
ILLINOIS WALSH	09/10/87	19,023,893	82.7	3,128,675	80.8		
(2) Hollier		1,609,650	7.0	592,442	15.3	36.0	36.8
(2) Sanders		1,747,620	7.6	35,701	0.9	2.0	2.0
(3) Franklin		574,875	2.5	78,220	2.0	13.0	13.6
(3) Psonas & Assoc.		38,962	0.2	38,962	1.0	100.0	100.0
Total DEE		3,971,107	17.3	745,325	19.2		
TOTAL A-112		22,995,000	100.0	3,874,000	100.0		
A121 MAINT OF WAY							
MEGA CONST CD	01/08/87	1,212,931	72.6	1,246,469	75.9	SEE	
(3) Wescove		26,714	1.6	21,757	1.3	REMARKS	81.4
(3) EOOD		298,850	17.9	259,153	15.8		86.7
(3) Allsteel		45,079	2.7	36,654	2.2		81.3
(3) Lindero		78,471	4.7	77,967	4.7		99.4
(3) JJJ Floor Covering		7,555	0.5	0	0.0		
Total DEE		456,669	27.4	395,531	24.1		
TOTAL A-121		1,669,600	100.0	1,642,000	100.0		
A123 WESTRANDO DEMO							
AERAMS CONTRACTING	10/23/86	174,071	70.0	209,827	85.3		
(2) L. Sibley		24,868	10.0	14,748	6.0	100.0	59.3
(2) B. C. Pringle		24,868	10.0	10,639	4.3	100.0	42.8
(8) L. Turner		24,868	10.0	10,786	4.4	100.0	43.4
Total DEE		74,604	30.0	36,173	14.7		
TOTAL A-123		248,675	100.0	246,000	100.0		

METRO RAIL PROJECT

UMTA QUARTERLY REVIEW MEETING

CONTRACT/CONTRACTOR DESCRIPTION	CONTRACT AWARD			PAID TO DATE		DEE PARTICIPATION TO DATE	
	DATE (a)	\$ VALUE (b)	% (c)	\$ VALUE (d)	% (e)	% WORK COMPLETED	% \$ PAID ((d)/(b)x100)
A130 MAIN YARD SHOPS							
TUTOR-SALIBA/FERINI	106/09/88	30,342,803	80.5				
(3) Chacon Steel		360,000	1.0				
(4) Tecumseh Constr.		2,700,000	7.2				
(2) LVJ Trucking		540,000	1.4				
(2) Golden Bear		1,600,000	4.2				
(2) Dominion Corp		730,000	1.9				
(3) Fireside Constr.		108,000	0.3				
(6) Paramount Metals		239,000	0.6				
(3) American Caisson		1,058,000	2.8				
Total DEE		7,335,000	19.5				
TOTAL A130		37,677,803	100.0				
A134 MAIER DEMO							
ABRAMS CONTRACTING	04/23/87	55,001	70.0	63,974	87.3		
(2) L. Sibley		7,858	10.0	4,053	5.1	100.0	51.6
(2) B. C. Pringle		7,858	10.0	3,626	4.6	100.0	46.1
(8) L. Turner		7,858	10.0	2,347	3.0	100.0	29.9
Total DEE		23,574	30.0	10,026	12.7		
TOTAL A-134		78,575	100.0	79,000	100.0		
A135/UNION STATION (1)							
TUTOR-SALIBA/FERINI	105/26/88	35,355,700	75.7				
(2) LVJ Trucking		640,000	1.4				
(2) Golden Bear		2,738,000	5.9				
(2) Anzalone & Assoc.		480,000	1.0				
(2) Hollier Eng.		1,464,000	3.1				
(4) Tecumseh Elec.		4,800,000	10.3				
(3) Chacon Steel		1,200,000	2.6				
Total DEE		11,322,000	24.3				
TOTAL A-135		46,677,700	100.0				

V.2

METRO RAIL PROJECT

UMTA QUARTERLY REVIEW MEETING

CONTRACT/CONTRACTOR DESCRIPTION	CONTRACT AWARD			PAID TO DATE		DEE PARTICIPATION	
	DATE	\$ VALUE	%	\$ VALUE	%	TO DATE	
	(a)	(b)	(c)	(d)	(e)	% WORK COMPLETED	% \$ PAID (d)/(b)x100
A141 UNION STATION TO 5TH/HILL AND CIVIC STATION(I)							
TUTOR SALIBA/GROVES	02/26/87	48,360,701	78.7	21,226,447	97.0		
(2) Golden Bear		4,794,756	7.8	0	0.0		
(6) RFS		4,487,399	7.3	0	0.0		
(6) Geofon		1,229,425	2.0	171,945	0.8	15.0	14.0
(3) Valverde		614,712	1.0	180,000	0.8	27.0	29.3
(3) Best Western Faving		70,160	0.1	0	0.0	100.0	0.0
(2) LVJ Leasing		1,280,000	2.1	264,000	1.2	20.0	20.6
(3) Felix Plumbing		307,356	0.5	31,248	0.1	7.0	10.2
(3) Franklin Reinforcing		19,360	0.0	19,360	0.1	100.0	100.0
(6) P.I.E.		307,356	0.5	0	0.0	0.0	0.0
Total DEE		13,110,524	21.3	666,553	3.0		
TOTAL A-141		61,471,225	100.0	21,893,000	100.0		
A144/GROUNDWATER TRTMT FLNT OPERATIONS CONSULTANTS							
(6) Lee & Ro	06/23/88	1,049,805	88.0				
(5) Kal Kirshnan		119,296	10.0				
(5) Kal Kirshnan		23,859	2.0				
Total DEE		143,155	12.0				
TOTAL A-144		1,192,960	100.0				
A145 5TH/HILL STN(I)							
GUY F. ATKINSON	03/12/87	30,014,868	77.6	8,029,814	77.4		
(2) Cal St Placers		2,990,177	7.7	30,253	0.3	1.0	1.0
(6) PIE		1,894,782	4.9	1,066,425	10.3	55.6	56.3
(3) Valverde		2,165,465	5.6	779,575	7.5	39.7	36.0
(8) REH Trucking		1,546,761	4.0	383,549	3.7	0.0	24.8
(7) Connie Hall		N/A	0.0	30,457	0.3	100.0	N/A
(3) Psomas & Assoc.		12,732	0.0	12,732	0.1	100.0	100.0
(3) Felix Plumbing		44,240	0.1	47,195	0.5	100.0	106.7
Total DEE		8,654,157	22.4	2,350,186	22.6		
TOTAL A-145		38,669,025	100.0	10,380,000	100.0		

V.3

METRO RAIL PROJECT

UMTA QUARTERLY REVIEW MEETING

CONTRACT/CONTRACTOR DESCRIPTION	CONTRACT AWARD			PAID TO DATE		IDEE PARTICIPATION TO DATE	
	DATE (a)	\$ VALUE (b)	% (c)	\$ VALUE (d)	% (e)	% WORK COMPLETED	% \$ PAID ((d)/(b))x100
A146 5TH/HILL TO 7TH/FLOWER							
SHANK/OBAYASHI	03/12/87	14,070,851	77.2	6,168,978	76.1		
(2) Doubleday		2,897,269	15.9	1,204,082	14.9	86.0	41.6
(2) Carr Trucking		492,000	2.7	102,327	1.3	21.0	20.8
(7) Dixie		761,700	4.2	632,613	7.8	83.1	83.1
Total DEE		4,150,969	22.8	1,939,022	23.9		
TOTAL A-146		18,221,820	100.0	8,108,000	100.0		
A161 7TH/FLOWER UTILITY RELOCATION							
DALTON CONSTRUCTION	12/17/86	2,499,853	76.9	2,488,665	72.1		
(3) Esquivel Paving		598,460	18.4	768,433	22.3	100.0	128.4
(7) J. Cal Transport		136,605	4.2	177,320	5.1	100.0	129.8
(3) Psomas & Assoc.		17,582	0.5	17,582	0.5	100.0	100.0
Total DEE		752,647	23.1	963,335	27.9	100.0	
TOTAL A-161		3,252,500	100.0	3,452,000	100.0		
A165 7TH/FLOWER (STAGE I)							
GRANITE CONSTRUCTION CO.	12/17/87	34,869,169	81.6	3,342,755	89.5		
(6) Geofon		390,818	0.9	68,573	1.8	17.5	17.5
(2) Madison Paving		307,735	0.7	13,467	0.4	4.2	4.4
(3) Uribe		216,765	0.5	0	0.0		
(2) Bueno		1,014,675	2.4	0	0.0		
(2) R. A. Francis		3,932,000	9.2	0	0.0		
(6) CoastGeo		339,000	0.8	4,768	0.1	1.4	1.4
(2) Sanders Engineering		173,800	0.4	0	0.0		
(3) Felix Corp.		210,000	0.5	22139	0.6	10.5	10.5
(2) Diversified Industry		355,789	0.8	269,810	7.2	82.0	76
(6) OFECOR		938,194	2.2	11,488	0.3	1.2	1.2
Total DEE		7,878,776	18.4	390,245	10.5		
TOTAL A-165		42,747,945	100.0	3,733,000	100.0		

4. V

METRO RAIL PROJECT

UMTA QUARTERLY REVIEW MEETING

A171 7TH/FLOWER TO WILSHIRE/ALVARADO

SHANK/DEAYASHI	01/08/87	19,913,099	75.6	7,863,893	73.9	0.0	
(2) Doubleday		4,741,214	18.0	2,178,171	20.5	73.2	45.9
(2) Carr Trucking		605,822	2.3	537,667	5.1	89.0	88.7
(7) Dixie		1,079,943	4.1	58,269	0.5	5.4	5.4
Total DEE		6,426,979	24.4	2,774,107	26.1	0.0	
TOTAL A-171		26,340,078	100.0	10,638,000	100.0	0.0	

A172 EMBI DEMO

AERAMS CONTRACTING	12/11/87	16,120	62.0	20,480	78.8		
(2) L. Sibley		2,470	9.5	853	3.3	100.0	34.5
(2) B. C. Pringle		2,470	9.5	2,453	9.4	100.0	99.3
(8) L. Turner		4,940	19.0	2,214	8.5	100.0	44.8
Total DEE		9,880	38.0	5,520	21.2		
TOTAL A-172		26,000	100.0	26,000	100.0		

A173 ALVARADO DEMO

AERAMS CONTRACTING	12/11/86	47,689	71.5	48,282	72.1		
(2) L. Sibley		6,337	9.5	9,599	14.3	100.0	151.5
(2) B. C. Pringle		6,337	9.5	6,986	10.4	100.0	110.2
(8) L. Turner		6,337	9.5	2,133	3.2	100.0	33.7
Total DEE		19,011	28.5	18,718	27.9		
TOTAL A-173		66,700	100.0	67,000	100.0		

A175 WILSHIRE/ALVARADO STN(1)

TUTOR SALIBA FERINI	06/11/87	18,304,056	78.3	4,811,649	94.9		
(6) Geofon		280,522	1.2	57,522	1.1	20.0	20.5
(3) Franklin		3,038,987	13.0	0	0.0		
(6) PIE		1,051,957	4.5	0	0.0		
(7) Damon		233,768	1.0	0	0.0		
(3) Felix		233,768	1.0	0	0.0		
(7) Dixie		233,768	1.0	0	0.0		
Total DEE		3,072,770	21.7	199,829	3.9	68.0	85.5
TOTAL A-175		23,376,826	100.0	5,069,000	100.0		

METRO RAIL PROJECT

UMTA QUARTERLY REVIEW MEETING

CONTRACT/CONTRACTOR DESCRIPTION	CONTRACT AWARD			PAID TO DATE		DEE PARTICIPATION TO DATE	
	DATE (a)	\$ VALLE (b)	% (c)	\$ VALLE (d)	% (e)	% WORK COMPLETED	% \$ PAID (d)/(b)X100
A610/115 TRACKWORK INSTALL/YARD STORAGE							
CAL ENGIN CONTRACTOR	09/23/87	16,576,171	77.3	2,418,515	76.6		
(8) United Engin		2,421,912	11.3	0	0.0		
(3) Best Western		600,120	2.8	0	0.0		
(7) West Coast Trans		548,681	2.6	0	0.0		
(2) Dominion Corp.		1,178,807	5.5	738,485	23.4	67.0	62.6
(2) T. S. Kent		107,164	0.5	0	0.0		
Total DEE		4,856,684	22.7	738,485	23.4		
TOTAL A-610/115		21,432,859	100.0	3,157,000	100.0	67.0	62.6
A795 LFS							
LFS SYSTEMS, INC	07/14/88	565,803	98.8				
(2) Robnett Electric		7,000	1.2				
TOTAL A-795		572,803	100.0				
SUB-TOTAL BY CODE							
2 - Black		36,510,544	13.1	5,749,552	3.4		
3 - Hispanic		11,946,213	4.3	2,390,977	1.4		
4 - Native American		7,500,000	2.7	0			
5 - Asian Indian		23,859	0.0	0			
6 - Asian		11,277,749	4.0	1,380,721	0.8		
7 - WEE		2,994,465	1.1	1,098,488	0.7		
8 - Dual DEE/WEE		4,012,676	1.4	401,029	0.2		
Total DEE		74,265,506	26.6	11,020,767	6.6		
Non- DEE/WEE		205,138,473	73.4	156,018,577	93.4		
GRAND TOTAL		279,403,979	100.0	167,039,344	100.0		

Sub total of Facilities

9.6

METRO RAIL PROJECT

UMTA QUARTERLY REVIEW MEETING

V. DEE PROJECT STATUS REPORT

B. SYSTEM/SYSTEMWIDE CONTRACTS

DATE: 30-Jun-88

CONTRACT/CONTRACTOR DESCRIPTION	C O N T R A C T A W A R D			P A I D T O D A T E		D E E P A R T I C I P A T I O N T O D A T E	
	DATE (a)	\$ VALU (b)	% (c)	\$ VALU (d)	% (e)	% WORK COMPLETED	% \$ PAID (d)/(b)*100
A612/CONTACT RAIL							
L.B. FOSTER	104/14/88	1,840,880	89.7				
(8) Lashco Inc.		197,601	9.6				
(2) Hohco Inc.		14,460	0.7				
Total DEE		212,061	10.3				
TOTAL A-612		2,052,941	100.0				
A615 PROTECTIVE COVERBOARD							
THE RUDD COMPANY	07/14/88	427,779	95.0				
(7) Imperial Transport.		22,514	5.0				
		450,293	100.0				
A616 RAIL FASTENERS							
LORD	07/23/87	3,720,531	89.1	112,808	1.2		
(2) Judd Industries		455,149	10.9			80.0	See Comment
Total DEE		455,149	10.9			80.0	
TOTAL A-616		4,175,680	100.0	112,808	1.2	1.2	1.2
A620 AUTO TRAIN CONTROL							
GEN RAILWAY SIGNAL	09/23/87	9,914,866	90.0				
(7) O'Keefe Engin		165,248	1.5				
(3) L & B Electric		936,405	8.5				
Total DEE		1,101,653	10.0				
TOTAL A-620		11,016,519	100.0				

V.7

S.C.R.T.D. LIBRARY

METRO RAIL PROJECT

UMTA QUARTERLY REVIEW MEETING

CONTRACT/CONTRACTOR DESCRIPTION	CONTRACT AWARD			PAID TO DATE		DBE PARTICIPATION TO DATE	
	DATE (a)	\$ VALLE (b)	% (c)	\$ VALUE (d)	% (e)	% WORK COMPLETED	% \$ PAID (d)/(b)x100
A640 COMMUNICATION							
ECHTEL CIVIL, INC.	06/09/88	31,360,155	87.9				
(2) Auto. Systems Control		619,056	1.7				
(2) Communications Intl.		1,005,155	2.8				
(2) Robnett Elect		1,249,606	3.5				
(7) Lamtronix Co.		46,111	0.1				
(3) Aguirre Electronic		46,111	0.1				
(2) Dagon Communications		806,953	2.3				
(6) Eston Metal Prods.		47,648	0.1				
(3) Chicago Name Plate		46,111	0.1				
(2) Infomax Data System		100,800	0.3				
(7) Wardsmith Enterprises Indep. Data Service		175,073	0.5				
(8) Encore Temps, Inc.		163,968	0.5				
Total DBE		4,306,592	12.1				
TOTAL A-640		35,666,747	100.0				
A740 VENTILATION EQUIPMENT							
FLAKT, INC.	02/25/88	3,676,260	90.7				
(3) Kal Kirshman		69,280	1.7	1637		2.4	2.4
(3) National Metal		122,258	3.0				
(7) CT Trucking		65,200	1.6				
(3) North End Welding		61,130	1.5				
(7) Aerovent		48,903	1.2				
(2) Brandon Supply		12,225	0.3				
Total DBE		378,996	9.3				
TOTAL A-740		4,055,256	100.0	1637	0.04		
A745 AIR HANDLING EQUIPMENT							
FLAKT, INC.	02/11/88	1,183,924	87.1				
(5) Kal Kirshman		20,500	1.5	4,025	0.30	19.0	19.0
(7) Aerovent		127,158	9.4				
(7) CT Trucking		27,500	2.0				
Total DBE		175,158	12.9				
TOTAL A-745		1,359,082	100.0	4,025	0.30	0.3	0.3

8.4

METRO RAIL PROJECT

UMTA QUARTERLY REVIEW MEETING

CONTRACT/CONTRACTOR DESCRIPTION	C O N T R A C T A W A R D			P A I D T O D A T E		D E E P A R T I C I P A T I O N	
	DATE (a)	\$ VALUE (b)	% (c)	\$ VALUE (d)	% (e)	% WORK COMPLETED	% \$ PAID (d)/(b)x100
SUB-TOTAL BY CODE							
2 - Black		4,263,404	7.3				
3 - Hispanic		1,212,015	2.1				
5 - Asian Indian		89,780	0.2				
6 - Asian		47,648	0.1				
7 - WEE		677,707	1.2				
8 - Dual DEE/WEE		361,569	0.6				
Total DEE		6,652,123	11.3				
Non- DEE/WEE		52,124,395	88.7				
GRAND TOTAL		58,776,518	100.0				

6.4

V. DBE PROJECT STATUS REPORT
 C. PROFESSIONAL SERVICES CONTRACT

Date: 24-Jun-88

CONTRACT/CONTRACTOR DESCRIPTION	MULTI-YEAR CONTRACT AWARD AND DBE COMMITMENT			PAID TO DATE TOTAL	
	DATE	\$ VALUE	%	\$ VALUE	%
CONSTRUCTION_MGMT					
PDCD		30,450,934	78.3	23,794,868	77.4
(8) BPS		864,093	2.2	872,459	2.8
(2) CCSC		2,991,108	7.7	2,632,489	8.6
(6) Hayakawa		643,035	1.7	473,324	1.5
(2) Jenkin, Gale		934,228	2.4	787,700	2.6
(6) Martin & Huang		742,921	1.9	733,378	2.4
(7) NPCM		850,316	2.2	741,978	2.4
(3) Ochoa/Sillas		536,075	1.4	64,546	0.2
(7) Randolph/Tate		92,501	0.2	0	0.0
(3) Vanir		767,017	2.0	505,804	1.6
(2) G. Gray			0.0	37,775	0.1
(2) Coleman Security			0.0	81,123	0.3
Total DBE		8,421,294	21.7	6,930,576	22.6
TOTAL C.M.	01-Jul-84	38,872,228	100.0	30,725,444	100.0
GENERAL_PLANNING					
SCA		7,010,301	78.0	6,328,268	78.7
(3) Cordoba Corp.				1,040,877	12.9
(7) Myra L. Frank & Asso.				296,350	3.7
(2) The Planning Grp				262,402	3.3
(3) Manuel Padron & Asso.				85,881	1.1
(6) Comsis Corporation				6,245	0.1
(7) Evaluation & Trng Inst.				20,562	0.3
Total DBE		1,977,265	22.0	1,712,317	21.3
TOTAL G.P.C.	01-Mar-84	8,987,566	100.0	8,040,585	100.0

V.10

METRO RAIL PROJECT

UMTA QUARTERLY REVIEW

C. PROFESSIONAL SERVICES CONTRACT

Date: 24-Jun-88

CONTRACT/CONTRACTOR DESCRIPTION	MULTI-YEAR CONTRACT AWARD AND DBE COMMITMENT			PAID TO DATE	
	DATE	\$ VALUE	%	\$ VALUE	TOTAL %
SYSTEMS_ENGR._ANALYSIS					
BOOZ, ALLEN & HAMILTON		6,005,559	80.0	5,207,200	80.9
(6) ACEX				532,557	8.3
(6) Abacus Enterprise				361,501	5.6
(6) Mundle & Associates				24,000	0.4
(7) Laughlin Publications				155,752	2.4
(7) H. A. Anderson				1,999	0.0
(2) PTI				142,055	2.2
(7) TransPerf Engineering				6,522	0.1
(7) North Pacific Constr.				6,591	0.1
Total DBE		1,501,390	20.0	1,230,976	19.1
TOTAL S.E.A.	01-Nov-84	7,506,949	100.0	6,438,176	100.0
DISTRICT_INSURANCE_ADM.					
JKOR		1,756,502	63.0	1,005,563	49.1
(6) Kadowaki		1,000	0.0	32,695	1.6
(6) Akasaka/Ortiz		42,414	1.5	34,868	1.7
(2) Davis		79,117	2.8	909,049	44.4
(8) Rideau		909,049	32.6	65,353	3.2
Total DBE		1,031,580	37.0	1,041,965	50.9
TOTAL D.I.A.	01-Oct-84	2,788,082	100.0	2,047,528	100.0

METRO RAIL PROJECT

UMTA QUARTERLY REVIEW

C. PROFESSIONAL SERVICES CONTRACT

Date: 24-Jun-88

CONTRACT/CONTRACTOR DESCRIPTION	DATE	MULTI-YEAR CONTRACT AWARD AND DBE COMMITMENT		PAID TO DATE	
		\$ VALUE	%	\$ VALUE	TOTAL %
GENERAL CONSULTANT		29,101,976	36.9		
MRTC	04/01	63,162,163	80.0	45,883,015	62.9
(6) Asian (19)		4,000,369	5.1	7,317,704	10.0
(2) Black (28)		7,660,630	9.7	13,439,637	18.4
(3) Hispanic (9)		2,541,747	3.2	3,976,292	5.5
(7) Women (36)		1,587,794	2.0	2,341,513	3.2
Total DBE		15,790,541	20.0	27,075,147	37.1
TOTAL G.C.		78,952,704	100.0	72,958,162	100.0
ARCHEOLOGIST					
(7) GREENWOOD & ASSOCIATES	01/22/87	160,945	100.0	35,453	100.0
Total DBE		160,945	100.0	35,453	100.0
TOTAL ARCHEOLOGIST		160,945	100.0	35,453	100.0
SUB-TOTAL_BY_DBE_CODE					
(2) Black		11,665,083		18,292,230	15.2
(3) Hispanic		3,844,839	2.8	5,673,400	4.7
(6) Asian		5,429,739	4.0	9,516,273	7.9
(7) WBE		2,691,556	2.0	3,606,719	3.0
(8) Dual DBE/WBE		1,773,142	1.3	937,812	0.8
TOTAL DBE's		28,883,014	21.0	38,026,434	31.6
TOTAL Non-DBE/WBE		108,385,460	79.0	82,218,914	68.4
GRAND TOTAL		137,268,474	100.0	120,245,348	100.0

V.12

V. DBE/WBE PROJECT STATUS REPORT

June 24, 1988

D. GENERAL COMMENTS

Response to UMTA Requests

At the last quarterly meeting, UMTA requested that the following action items be addressed in this report.

1. Expand the comments section to explain any variances in actual DBE commitment from planned commitment for facilities and systemwide contracts.

Response: The report has been expanded to compare percentage of work completed by each DBE versus the percentage of total dollars paid to date. Variances between these two figures are explained in the comments section for each contract.

2. Ensure that the DBE goals are being met on professional services contracts.

Response: This part of the report has been revised to include dollars committed to each DBE. Any significant variance between a DBE's commitment and dollars paid to date will be explained in the comments section for each contract.

3. Advise UMTA of the District's plan of action for contractors who fail to comply with DBE goals.

Response: The District has taken the following actions to address this concern.

- (a) The Metro Rail bid documents have been revised to include in the General Conditions a clause requiring the contractors to exercise good faith efforts throughout the performance of the contract in order to ensure that DBEs committed to in the bid have maximum opportunity to successfully perform in the contract and that the contractor meets the DBE goal. The contractor is also informed in the General Conditions that failure to carry out the DBE requirements contained therein shall constitute a breach of contract which may result in the termination of the contract or imposition of other administrative sanctions. Following is a list of the good faith efforts stated in Article 73.D of the General Conditions:

- (1) Negotiating in good faith to attempt to finalize a subcontract agreement with the

DBEs committed to in the Bid.

(2) For Contractors who fell short of meeting the DBE goal set for the Contract but who were determined by the District to have made good faith efforts to meet the goal, exerting efforts, that can be documented, to seek out and utilize additional DBE suppliers and DBE subcontractors to make up for the shortfall.

(3) Continuing to provide assistance to DBE subcontractors or suppliers in obtaining bonding, lines of credit, etc., if required by the Contractor.

(4) Notifying a DBE in writing of any potential problems and attempting to resolve the problem prior to formally requesting District approval to substitute the DBE.

(5) As with all subcontractors, timely payment of all monies due and owing to DBE subcontractors and suppliers.

(6) Timely submittal of complete and accurate DBE monthly reports. (With respect to this good faith effort, the Metro Rail Project Configuration Control Board has processed a request from the EO Department to provide for imposition of monetary penalties for late submittal of these reports.)

(7) Alerting the District's Contract Compliance Department, in a timely manner, of any problems anticipated in attaining the DBE participation goals committed to in the Bid.

- (b) On June 23, 1988, The District's Board of Directors approved a revised DBE Program to conform to Section 106(c) of the Surface Transportation and Uniform Relocation Assistance Act of 1987 and implementing regulations. This revised Program also includes administrative sanctions (Section 8.5) that will be imposed on contractors deemed to be in non-compliance with the DBE provisions of their contract. These sanctions shall include, but not be limited to:

(1) Liquidated damages which consist of the following: The contract payments shall be reduced by an amount equal to the difference between the contractor's DBE goal commitment and the actual DBE goal attainment multiplied

by the liquidated damage assessment as set forth in the following sliding scale:

<u>CONTRACT AMOUNT</u>	<u>ASSESSMENT</u>
\$1,000-\$49,000	\$1,000
\$50,000-\$149,000	\$1,500
\$150,000-\$249,000	\$2,000
\$250,000-and over	\$2,500

(Example: Contractor committed to 15% DBE participation on a \$500,000 contract. Contractor achieved only 10% at contract close-out and did not submit good faith efforts documentation. The liquidated damages would be 15 minus 10, or 5, multiplied by \$2,500 for a total of \$12,000.)

(2) The suspension of payment to the contractor of any monies held by the District as retained on the contract;

(3) The denial of contractors (including its principals and key personnel) of the right to participate in any future contracts of the District for a period of up to three years; and

(4) Contract termination.

Facilities Contracts

A112 Main Shop Building

Data per Summary Subcontract Award & Paid (SSA&P) Report through period ending June 30, 1988. Psomas & Associates was added on October 8, 1988 and decertified for exceeding SBA size standards on October 29, 1987, which was after the contract award date of September 10, 1987 and is therefore counted as a certified DBE on this contract as part of the contractor's on-going efforts to maximize DBE participation.

A121 MOW Building

Data per SSA&P Report for period ending June 30, 1988. The SSA&P for period ending March 31, 1988 which reported Wescope as having been paid \$26,860 was in error. That amount is Wescope's total contract value. The correct total amount paid to Wescope is \$21,757. JJJ Floor Covering was added on January 1, 1988 as part of the contractor's on-going efforts to maximize DBE participation. The contractor's SSA&P Report did not indicate the percentage of work completed to date. This information was

requested on July 27, 1988 and has not yet been received.

A141 Union Stn-Civic Center Tunnels and Civic Center Stn (I)

Data per SSA&P Report for period ending June 30, 1988. Best Western was added on May 13, 1988. Their work is 100% complete though they have not been paid to date. The contractor says there is no problem with payment and it is being processed.

LVJ Leasing was illegally substituted for Green River Trucking. The remaining work to be done is approximately 2% of the remaining 4% committed to Green River for this item.

A145 5th/Hill Station Stage I

Data per SSA&P Report for period ending June 30, 1988.

A146 Line 5th/Hill 7th/Flower

Data per SSA&P Report for period ending June 30, 1988. An incorrect amount of \$637,202 was reported on the SSA&P period ending March 31, 1988 as having been paid to Dixie Construction. The correct amount paid to date is \$632,613.

A165 7th/Flower Station Stage I

Data per SSA&P Report for period ending June 30, 1988. Sanders Engineering was added on May 25, 1988 and Felix was added on July 20, 1988 as part on contractor's on-going efforts to maximize DBE participation. Both of these contracts are under 1/2 of 1% of the total contract.

A171 Line 7th/Flower Wilshire/Alvarado

Data per SSA&P Report for period ending June 30, 1988.

A175 Wilshire/Alvarado Stage I

Data per SSA&P Report for period ending June 30, 1988. Damon Construction was decertified on August 12, 1987, after the award date of June 11, 1987 and is therefore counted toward the DBE goal.

System/Systemwide Contracts

A610/115 Trackwork/Yard Storage Area

Data per SSA&P Report for period ending June 30, 1988.

A616 Direct Fixation Rail Fasteners

Data per SSA&P Report for period ending June 30, 1988. The contractor has been requested to explain why Judd Industries has completed 80% of its work and has not been paid.

A620 Automatic Train Control

Data per SSA&P Report for period ending June 30, 1988.

A740 Ventilation Equipment

Data per SSA&P Report for period ending June 30, 1988.

A745 Air Handling Equipment

Data per SSA&P Report for period ending June 30, 1988.

Professional Services Contracts

Construction Management

Randolph & Tate, Arts Consultant, have not been used to date because the Arts in Transit Program has not required their services as yet.

Ochoa & Sillas, Legal Consultant, have not been utilized as anticipated because the District's General Counsel has directed that all requirements for legal services be processed through the Legal Department first to determine whether outside counsel is required or if the District can resolve the matter with in-house legal staff.

Gray Photography and Coleman Security were added to the joint venture in an on-going effort to increase DBE participation.

General Planning

Data reported are cumulative to date. Individual DBE commitments vary yearly based upon scopes of work required for each Annual Work Program. Overall goal remains constant at 22%.

Systems Engineering & Analysis

Data reported are cumulative to date for the Annual Work Program ending June 30, 1988. Individual DBE commitments vary yearly based upon scopes of work required for each Annual Work Program. Overall goal remains constant at 20%.

District Insurance Administrators

Data is based upon Annual Work Programs 2 and 3 as specified in contract amendment #3504-4.

Kadowaki & Associates resigned from the joint venture effective December 1, 1987. Its share is to be divided equally between Akasaka & Ortiz and Rideau & Associates.

Davis & Associates terminated on March 30, 1988. The Transit Bond Guarantee Program is now being administered by Rideau & Associates separate and apart from its participation as a joint venture partner.

Total contract award figure for DIA excludes amounts paid as insurance premiums.

General Consultant

There are 92 DBEs under contract to this consultant. Individual DBE commitments vary yearly. Overall goal remains constant at 20%.

VI. JOINT DEVELOPMENT/NON-FEDERAL CONTRIBUTIONS
REPORT

VI. JOINT DEVELOPMENT/NON-FEDERAL
CONTRIBUTIONS REPORT

06/24/88

This report focuses upon the sites at which there was activity toward the planning and implementation of projects:

1. Wilshire/Alvarado - purchase of the property which fronts on Wilshire Boulevard adjacent to the District's property at the Wilshire/Alvarado station was terminated due to discovery of asbestos in the major building. Discussions were, therefore, terminated with the developer. The present owner indicated interest in development but is not pursuing it aggressively. In the context of a master-planned scheme, however, with the active interest of the City of Los Angeles, the prospects for development continue to improve at this site.

An agreement with an owner of the 7th Street side for use of the knockout panel in the south entry is progressing.

During this time period, the District met with the City of Los Angeles, Department of Planning, to discuss the Preliminary Station Area Development Plan at the Wilshire/Alvarado Metro Rail Station. The constraints presented in this plan will prescribe the amount and type of joint development at the Wilshire/Alvarado Station. The District forwarded comments on the plan to the City.

2. Union Station - discussions are proceeding with the City of Los Angeles and the owner railroads of Union Station regarding use and configuration of the eastern end of Union Station. A proposed exchange of property between the City and the railroads terminated, and the District was proceeding to acquire the City parcel in accordance with the original certification. The focus of the discussions is upon cooperative and mutually beneficial use between the District and the railroads.

3. 5th and Hill Street at southeast entry - agreement was reached with an adjacent owner on Broadway to provide a knockout panel to enable future connection to this entrance. The owner has deposited estimated compensation, and the District's contractor is pricing a change order.

Processing of benefit assessment appeals from the 86/87 assessment year is nearing completion at the first level of appeal. In July the Board of Directors will be requested to set the benefit assessment rate for 88/89 assessment year at \$.00 in keeping with an earlier decision to defer assessments until Metro Rail is in operation.

*Real Estate has added
Devit Mgr to staff so
devotes more time to this*

VII. REVIEW OF MAY 10, 1988 MEETING OPEN ACTION ITEMS

VII. REVIEW OF MAY 10, 1988, MEETING - OPEN ACTION ITEMS

6/24/88

ACTION	RESPONSIBILITY	COMMENTS
1. Send UMTA the rationale used to modify the construction sequence on Contract A141	SCRTD	Open. The final resequencing plan has not yet been selected
2. Send UMTA a copy of the Mitsui vehicle protest	SCRTD	Complete
3. Transmit the updated MOS-1 CUD.	SCRTD	Complete
4. Update the Financial Plan to reflect anticipated changes	SCRTD	Will be completed 8/17/88
5. Transmit UMTA C4221.B to SCRTD.	UMTA	Complete
6. Advise the District on removing the "allocated budget" column on the Financial Plan	UMTA	Open
7. Omit the Construction/Procurement Progress Section from future quarterly reports.	SCRTD	Complete
8. Send UMTA and the PMOC a copy of the "invitation to bid" section of the contract specifications which includes the Brooks-Murkowski Amendment language.	SCRTD	Complete
9. Send Revision 1 of the Value Engineering Procedures to the PMOC.	SCRTD	Complete
10. Expand the comments section of the DBE Report to explain any variances in actual commitment from planned commitment.	SCRTD	Will be completed 8/17/88

VII.1

ACTION	RESPONSIBILITY	COMMENTS
11. Review the legal options for ensuring professional services contracts meet their DBE goals.	SCRTD	Will be completed 8/17/88
12. Advise UMTA of the District's plan of action for contractors who fail to comply with DBE goals.	SCRTD	Will be completed 8/17/88
13. The next meeting will be held in Los Angeles on August 17 and 18, 1988. A site tour will be included.	SCRTD/UMTA	Complete
Open Actions from the meeting on February 17, 1988:		
9. Respond to the MOS-1 budget amendment for the CORE study.	UMTA	

VII.2

VIII. PMOC MONTHLY REPORT COMMENTS

VIII. PROJECT MANAGEMENT OVERSIGHT CONSULTANT (PMOC) ISSUES

06/24/88

The PMOC has identified 15 issues in the April report for District attention. Three of these issues have been resolved by the District. No reports were received for May and June. The status of the open items is listed on the following pages.

<u>ITEM.</u>	<u>OPEN ISSUE</u>	<u>DISTRICT RESPONSE</u>
3.7	171 STAGING AREA Conflict between contract drawings and property acquired for staging. SCRTD is still investigating the issue of errors and omissions on the contract documents.	The District is preparing final comments on a recommended course of action.
3.12	FUNDING MOS-2 Funding plan requirement which assures 50% local match.	The funding issue does not presently require SCRTD action.
5.4	REAL ESTATE ACQUISITION FOR CONTRACT A130. Forecast possession is same date as forecast NTP for Contract A130. SCRTD will provide acceptable replacement property to resolve acquisition problem.	NTP was issued July 1, 1988. The District has access to Parcel A1-013 in exchange for access to an RTD-owned parcel.

<u>ITEM</u>	<u>OPEN ISSUE</u>	<u>DISTRICT RESPONSE</u>
5.21	A146 AND A171 EEO COMPLIANCE	
	Shank Ohbayashi is combining manpower utilization report even though contract specifications require a report for each contract.	RTD met with the Office of Federal Contract Compliance to discuss development of a contract-specific report form to replace the Department of Labor form currently being used. This RTD form is under review by the Legal Department prior to presentation to the CCB.
5.23	A121 COMPLETION	
	Contractor not performing and assessment of liquidated damages not resolved.	Liquidated damages penalties were assessed as of April 23, 1988. The penalties were stopped when the contract was "substantially complete" on June 24, 1988. Current forecast for completion is July 29, 1988.
5.24	A141 DELAYS	
	No agreement with contractor on revised schedule and cost impact of the delays.	SCRTD has evaluated numerous alternatives to tunnel sequencing in order to mitigate delays to this contract. A final plan has not yet been adopted.
5.25	A145 POTENTIAL CLAIMS	
	Extensive list of potential claims; may require additional personnel and/or changes in procedures to administer the workload.	Claims on this contract are being actively negotiated. SCRTD is in the process of developing a claims administration procedure for use on the Project.

ITEM

OPEN ISSUE

DISTRICT RESPONSE

5.27 CONSTRUCTION PROGRESS

All major contracts are falling further behind schedule.

Weekly meetings are being held to develop contract action plans. As a result of these action plans, SCRTRD has taken the following actions to mitigate contract slippage:

- o A112, A171, A175
Revised schedules which meet contractual milestones have been submitted by the contractor and approved.
- o A145, A146
SCRTRD is pursuing contractor responses.
- o A135, A141
SCRTRD is continuing to analyze alternatives.

5.28 EEO COMPLIANCE

All contractors are deficient in their use of DBE/WBE subcontractors. SCRTRD should prepare a plan as to how these deficiencies will be corrected.

See Section V. DBE.

5.29 MATERIAL PROCUREMENT

A141 contractor is claiming interest and/or costs due to major items of equipment delivered but not paid.

SCRTRD has requested but not received pricing information from the contractor. SCRTRD will comply with requests as set forth in the contract.

VIII.4

<u>ITEM</u>	<u>OPEN ISSUE</u>	<u>DISTRICT RESPONSE</u>
5.31	<p>PENALTY FOR NON-COMPLIANCE WITH EEO REQUIREMENTS</p> <p>A145 contractor claims the 5-day deadline is unreasonable.</p>	<p>This contractor requests and receives an extension each month to process reports. Report requirements are part of the contract specifications.</p>
5.32	<p>CONSTRUCTION PROGRESS REPORTING</p> <p>Measuring progress by payments to contractor not realistic.</p>	<p>The system for reporting progress has been revised to more accurately reflect contract progress. The revised progress curves will be presented in the Metro Rail Monthly Status Report for July 1988.</p>

IX. MOS-2 STATUS

UMTA - can't concern w/ tight schedule - so very tight
6070

IX. MOS-2 STATUS

CONGRESSIONALLY ORDERED RE-ENGINEERING STUDY (CORE)

Core Study Status

June 24, 1988

Supplemental Environmental Impact Statement/Subsequent Environmental Impact Report (SEIS/SEIR) Status

The CORE Study Addendum to the Draft SEIS/SEIR was distributed on May 20, 1988. Since that time, the District has received public comment on this document including a public hearing held on June 21, 1987.

The local decision making process has begun with recommendations from the Los Angeles City Planning Commission on the locally preferred alternative (LPA) and the second minimum operable segment (MOS-2), and with an initial MOS-2 budget proposal developed by the Los Angeles County Transportation Commission. The Los Angeles City Council will make LPA and MOS-2 recommendations at a meeting to be held on July 13, 1988.

The proposed schedule for remaining CORE Study activities follows:

- Circulation Comment Period Closes July 7, 1988
- District Board Selects LPA and MOS-2 July 14, 1988
- District Files MOS-2 Grant Application July 15, 1988 - Brian Barden
- Certification, Notice of Determination August 5, 1988 - UMTA wants Pauline L...
- Distribution of the Final SEIS/SEIR August 6, 1988 - Need UMTA sign off 1st
- UMTA Issues Record of Decision September 6, 1988 (2-3 weeks off)
- Full Funding Contract Executed September 29, 1988

Account WWP expires Sept 30. Need to consume. Could extend WWP. said more 60 days sending off no

SEIS/EIR

July 13 City adopted LPA to N Hollywood

July 14 RTD Bd " " " " "

Now working on commitment wants for full funding contract from LACTC, City, & state

Gary w/ City now

ing 9 - City adopted resolution for \$200,000 for local study for connector study to BOW

IX. MOS-2 STATUS

BENEFIT ASSESSMENT DISTRICTS

06/24/88

The establishment of a data base for development of the MOS-2 benefit assessment districts was initiated. This includes obtaining computer-based land use data from other agencies, field surveys, and building and safety records from local governments.

The benefit assessment validation lawsuit is under appeal with the Los Angeles Appellate Court, with a ruling expected in early 1989. If the appeal is favorable, bonding will be initiated in mid-1989.

Aug 11 Bd authorized GM
to appoint BA TF
appted Board member as chair
Now in process of identifying
candidates for TF

Data Base
Computer Files downloaded
Flood Control / Assessors Files
Field surveys completed
on 3 stations

S.C.R.T.D. LIBRARY

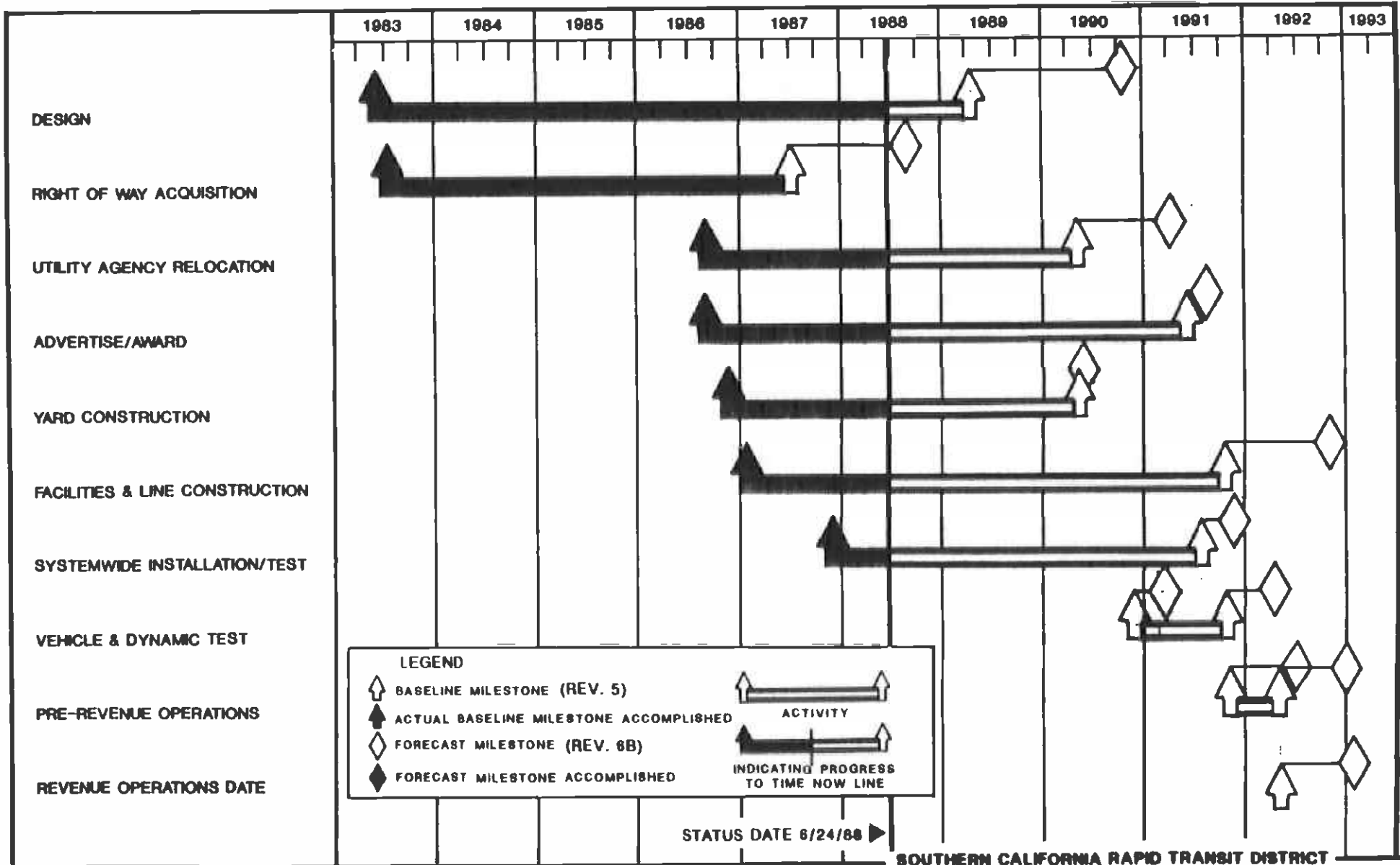
X. SCHEDULE AND LOCATION OF NEXT MEETING

XI. GENERAL DISCUSSION/ WRAP UP

XII. APPENDIX

MINIMUM OPERABLE SEGMENT - 1 LEVEL 0 EXECUTIVE SCHEDULE

REVISION 6A 3/25/88



XII.1

SECRET LIBRARY

XIII. SITE TOUR

XIII. SITE TOUR ITINERARY

Depart	9:30 a.m.	Bus Stop - Sixth Street (Between Spring & Main Street)
Arrive	9:45 a.m.	A112, A121, A610/115
Depart	10:15 a.m.	Santa Fe & First Avenues
Arrive	10:30 a.m.	A135, A141, A143, A144
Depart	11:45 a.m.	Union Station, 5th Hill Street, and Dewatering Treatment Plant
	12 noon	Lunch
Arrive	12:45 p.m.	A146-Shaft & Tunnel
Depart	1:15 p.m.	7th & Flower Street
Arrive	1:15 p.m.	A165
Depart	1:30 p.m.	7th/Flower Station, Stage I
Arrive	1:30 p.m.	A171 and A175
Depart	2:00 p.m.	Wilshire and Alvarado