

**SOUTHERN CALIFORNIA  
RAPID TRANSIT DISTRICT**

**ORGANIZATION  
CHARTS**

**JANUARY  
1989**



SOUTHERN CALIFORNIA RAPID TRANSIT DISTRICT

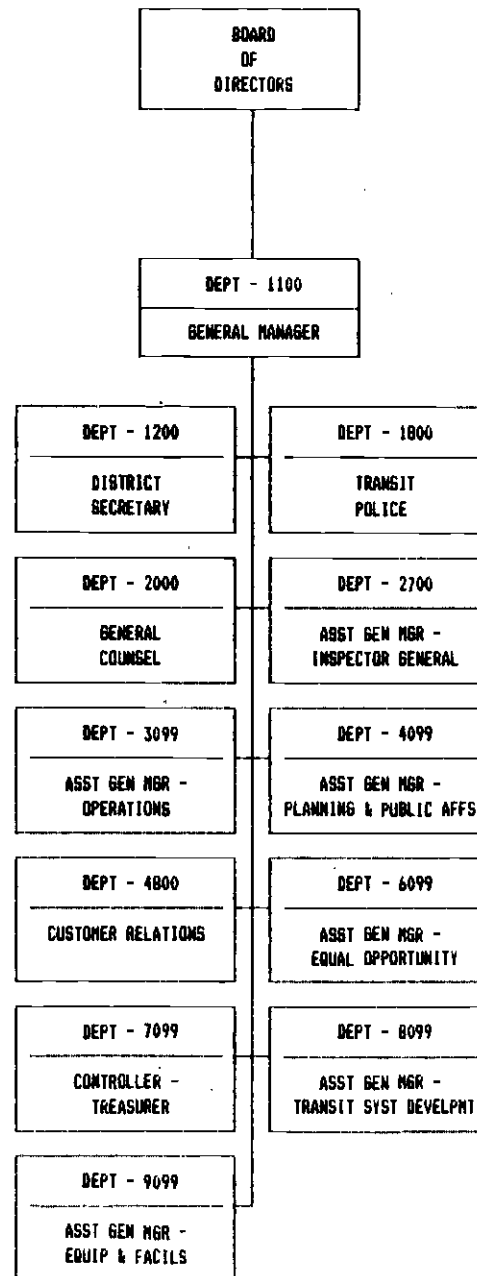
ORGANIZATION CHARTS

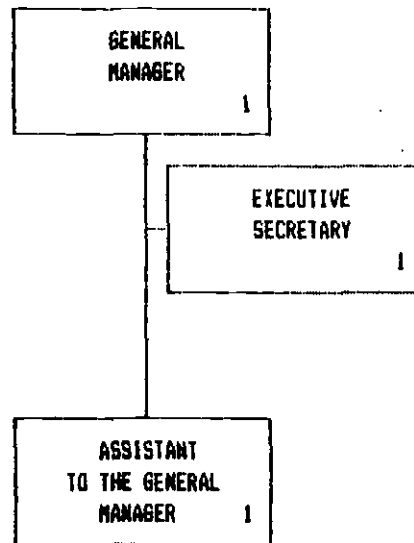
TABLE OF CONTENTS

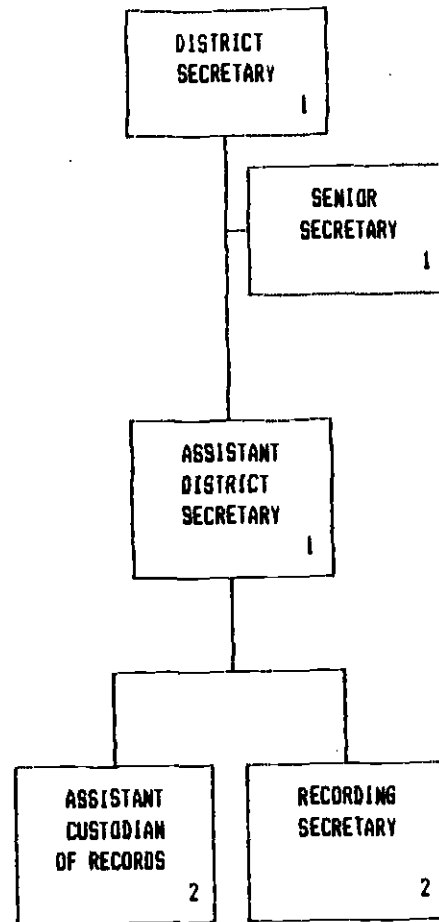
1000	BOARD OF DIRECTORS/OVERALL DISTRICT . . . . .	1
1100	GENERAL MANAGER . . . . .	2
1200	DISTRICT SECRETARY . . . . .	3
1800	TRANSIT POLICE . . . . .	4
2200	LEGAL . . . . .	5
2300	EMPLOYEE RELATIONS . . . . .	6
2700	AGM - INSPECTOR GENERAL . . . . .	7
3099	AGM - OPERATIONS . . . . .	8
	TRANSPORTATION	
3200 & 3299	DEPARTMENT OVERVIEW . . . . .	9
3250	OPERATING DIVISIONS . . . . .	10
3296	OPERATION CONTROL & SERVICES . . . . .	11
3297	INSTRUCTION . . . . .	12
3900	SCHEDULING & OPERATIONS PLANNING . . . . .	13
3940	PRINT SHOP . . . . .	14
4099	AGM - PLANNING & PUBLIC AFFAIRS . . . . .	15
4100	GOVERNMENT AFFAIRS . . . . .	16
4200	PLANNING . . . . .	17-18
4300	LOCAL GOVERNMENT & COMMUNITY AFFAIRS . . . . .	19
4400	MARKETING & COMMUNICATIONS . . . . .	20
4800	CUSTOMER RELATIONS . . . . .	21
6099	AGM - EQUAL OPPORTUNITY . . . . .	22
6100	EQUAL EMPLOYMENT OPPORTUNITY	
6200	CONTRACT COMPLIANCE	
6300	EMPLOYEE EDUCATION, TRAINING & DEVELOPMENT	
6400	DISADVANTAGED BUSINESS ENTERPRISE/ WOMEN'S BUSINESS ENTERPRISE	
7099	CONTROLLER-TREASURER . . . . .	23
7100	ACCOUNTING & FISCAL . . . . .	24-25

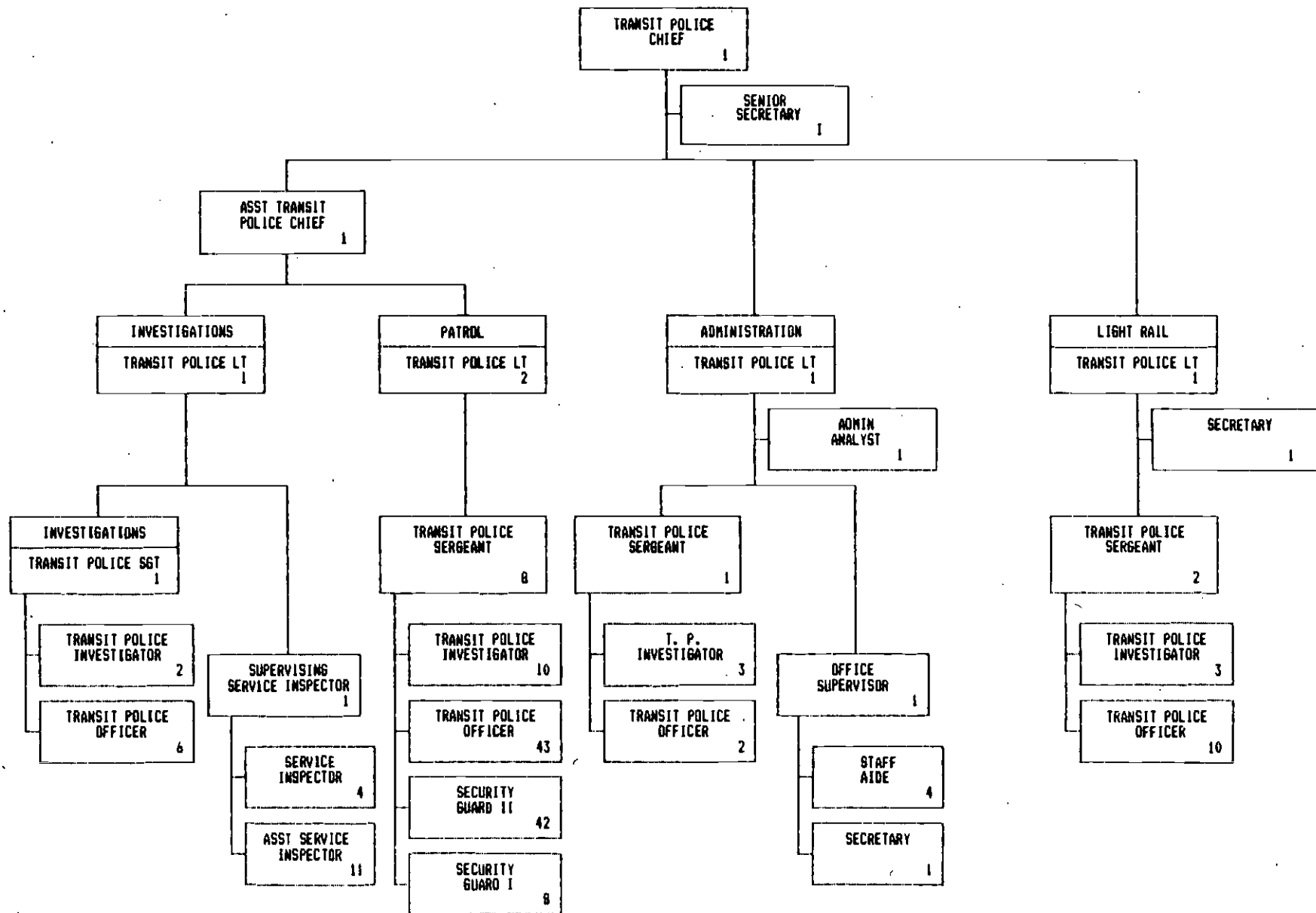
TABLE OF CONTENTS (CONTINUED)

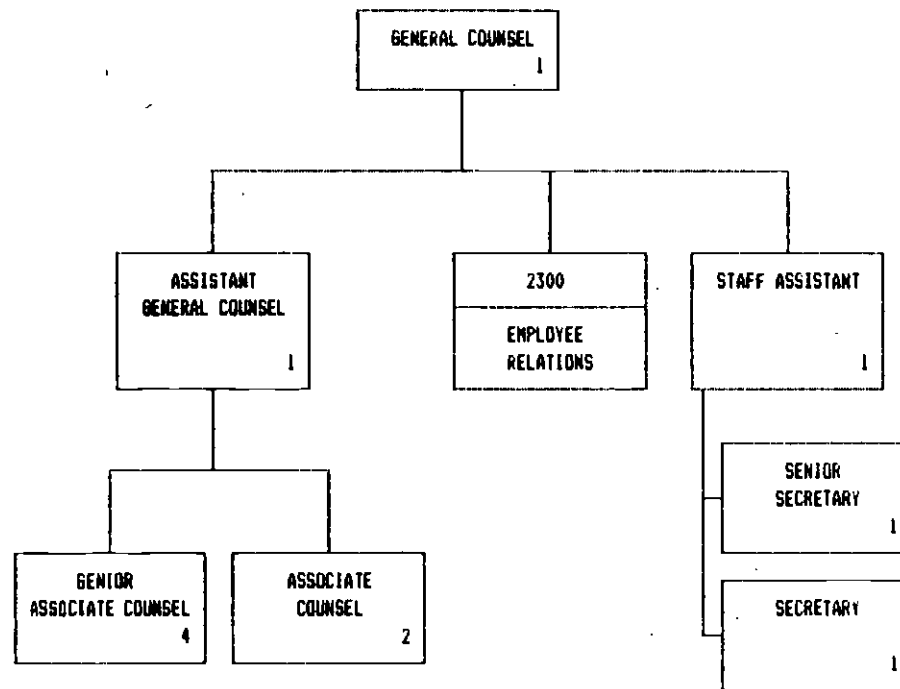
7200	DATA PROCESSING . . . . .	26-29
7900	RISK MANAGEMENT . . . . .	30
8099	AGM - TRANSIT SYSTEMS DEVELOPMENT . . . . .	31
8100	TRANSIT SYSTEMS DEVELOPMENT	
	SYSTEMS DESIGN & ANALYSIS . . . . .	32
	RAIL FACILITIES ENGINEERING . . . . .	33
	CONSTRUCTION MANAGEMENT . . . . .	34
	CONSTRUCTION SAFETY . . . . .	35
	REAL ESTATE & DEVELOPMENT . . . . .	36
	PROGRAM CONTROL . . . . .	37
9099	AGM - EQUIPMENT & FACILITIES . . . . .	38
9200	BUS FACILITIES ENGINEERING . . . . .	39
9300	EQUIPMENT MAINTENANCE	
	DEPARTMENT OVERVIEW . . . . .	40
	CENTRAL MAINTENANCE . . . . .	41
	OPERATING DIVISIONS . . . . .	42
	ADMINISTRATION & LABOR . . . . .	43
	PLANNING SECTION . . . . .	44
9400	OFFICE OF CONTRACTS, PROCUREMENT & MATERIEL . . . . .	45-47
9500	PERSONNEL . . . . .	48
	FACILITIES MAINTENANCE & OPERATIONS	
9600	DEPARTMENT OVERVIEW . . . . .	49
9610	GENERAL SERVICES . . . . .	50
9620	BUILDINGS & GROUNDS . . . . .	51
9630	ELECTRICAL/ELECTRONIC . . . . .	52
9660	STOPS & ZONES . . . . .	53
9670	SCREEN SHOP	
9680	RAIL ACTIVATION . . . . .	54
9700	OFFICE OF MANAGEMENT & BUDGET . . . . .	55



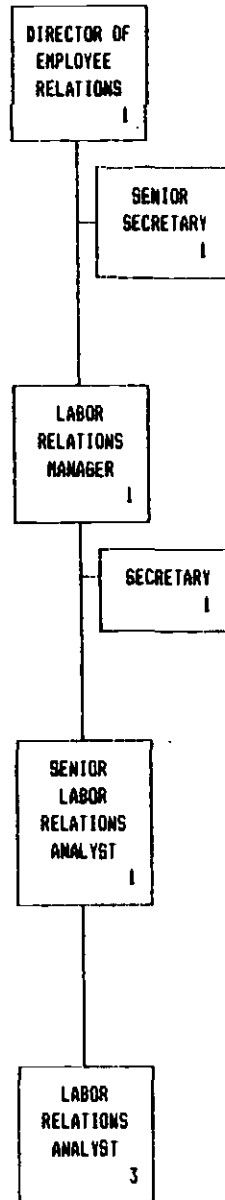


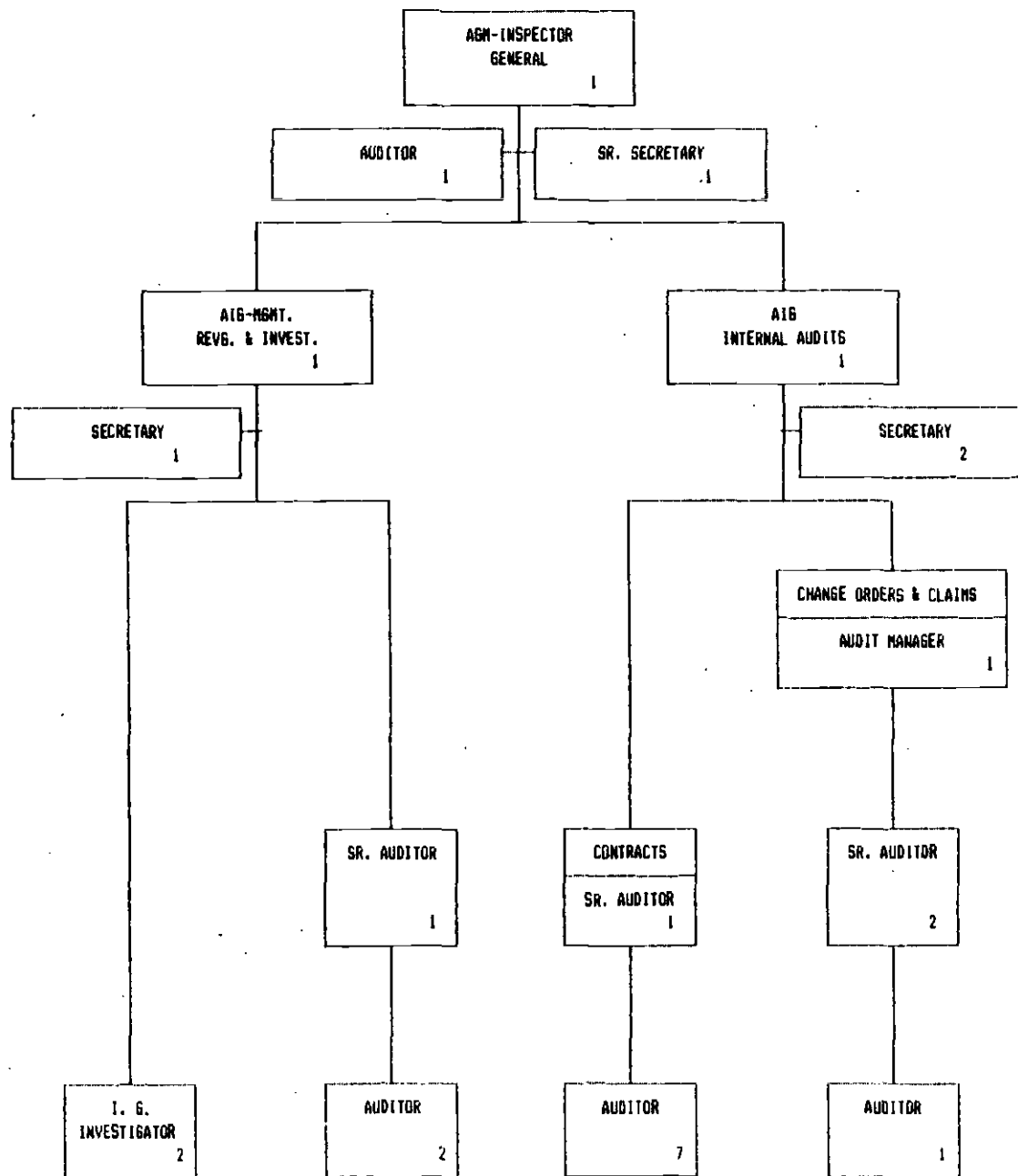


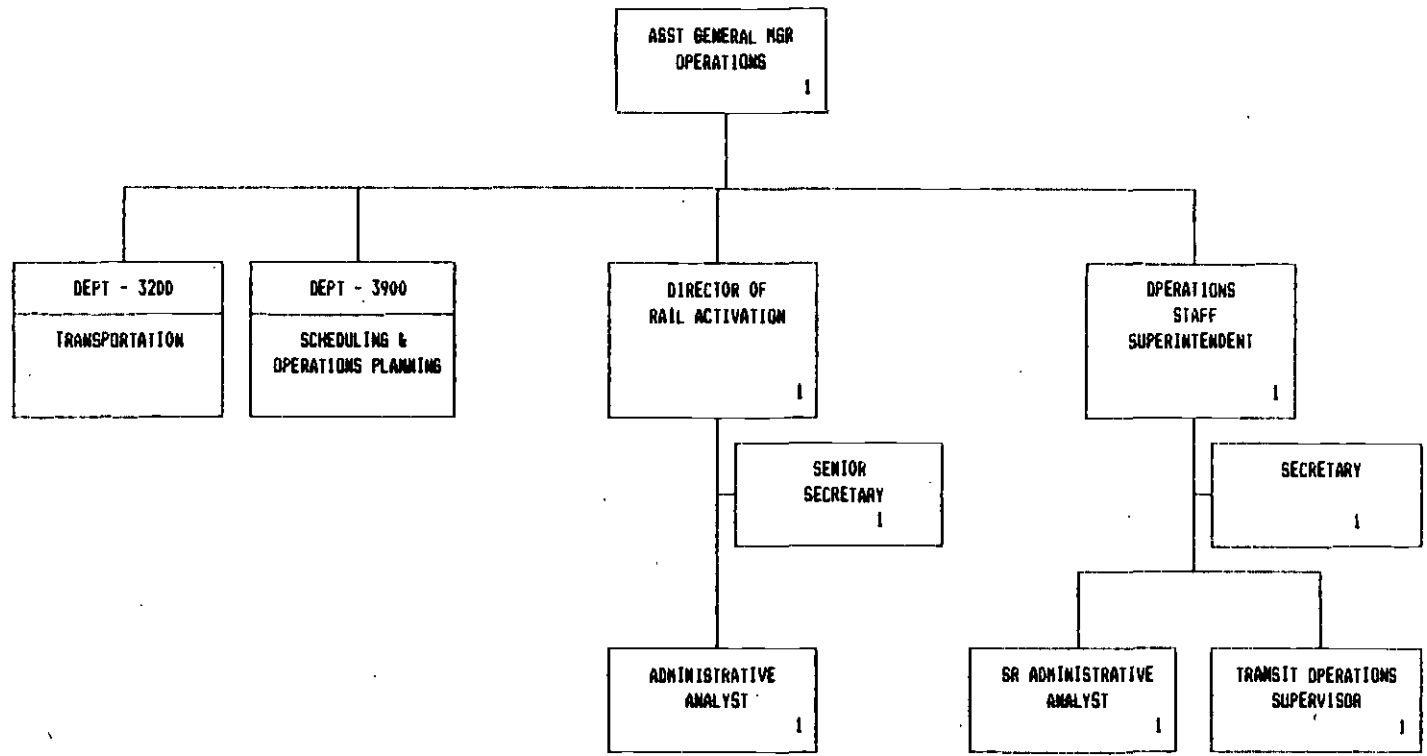


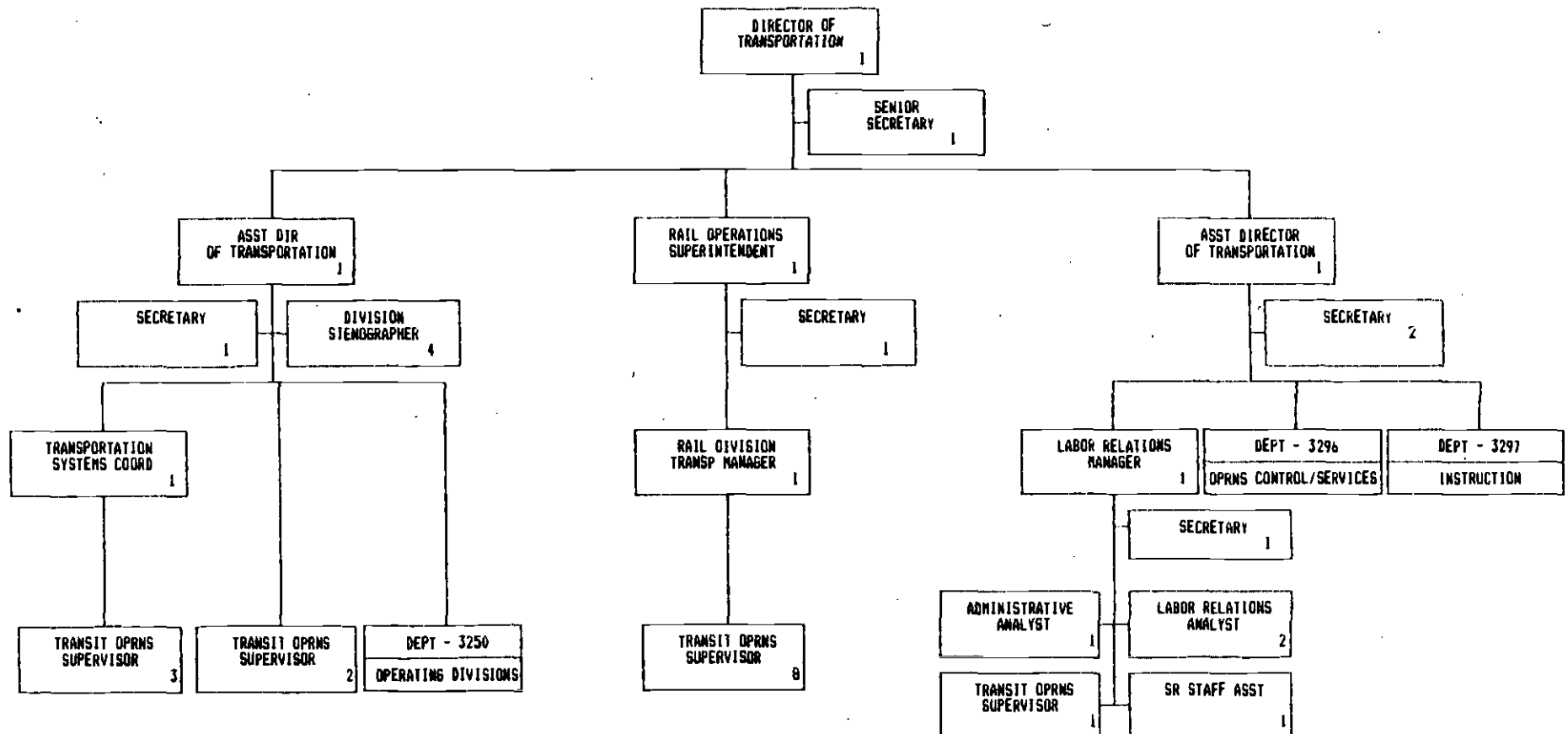


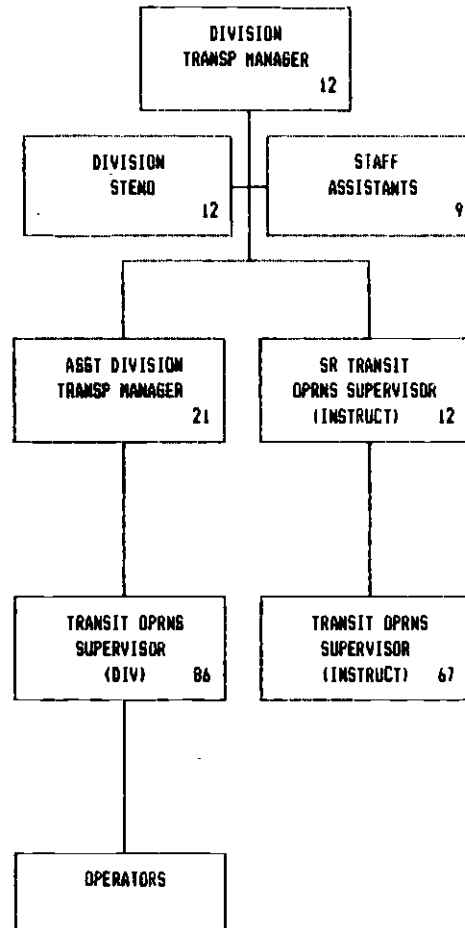


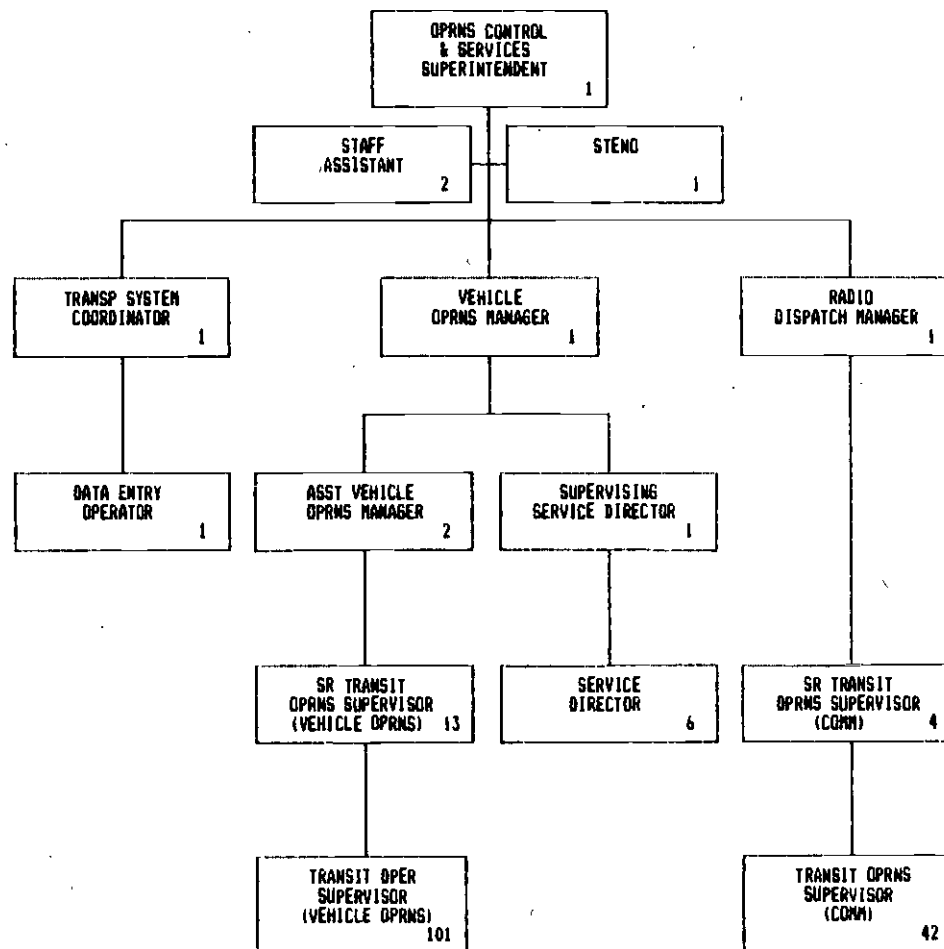


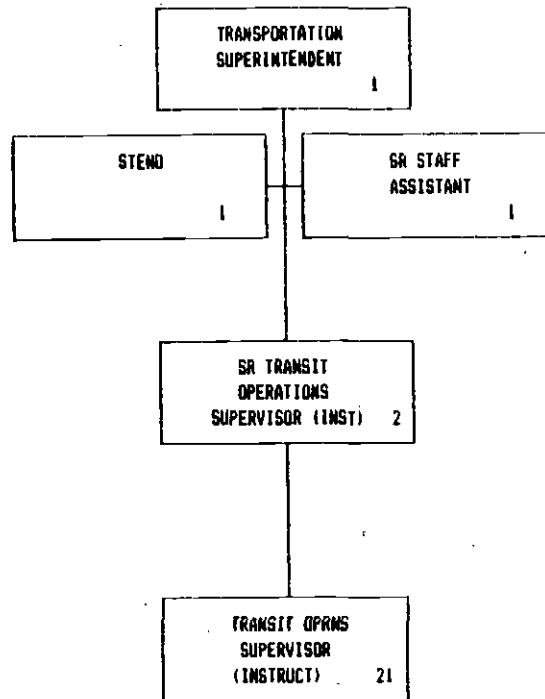


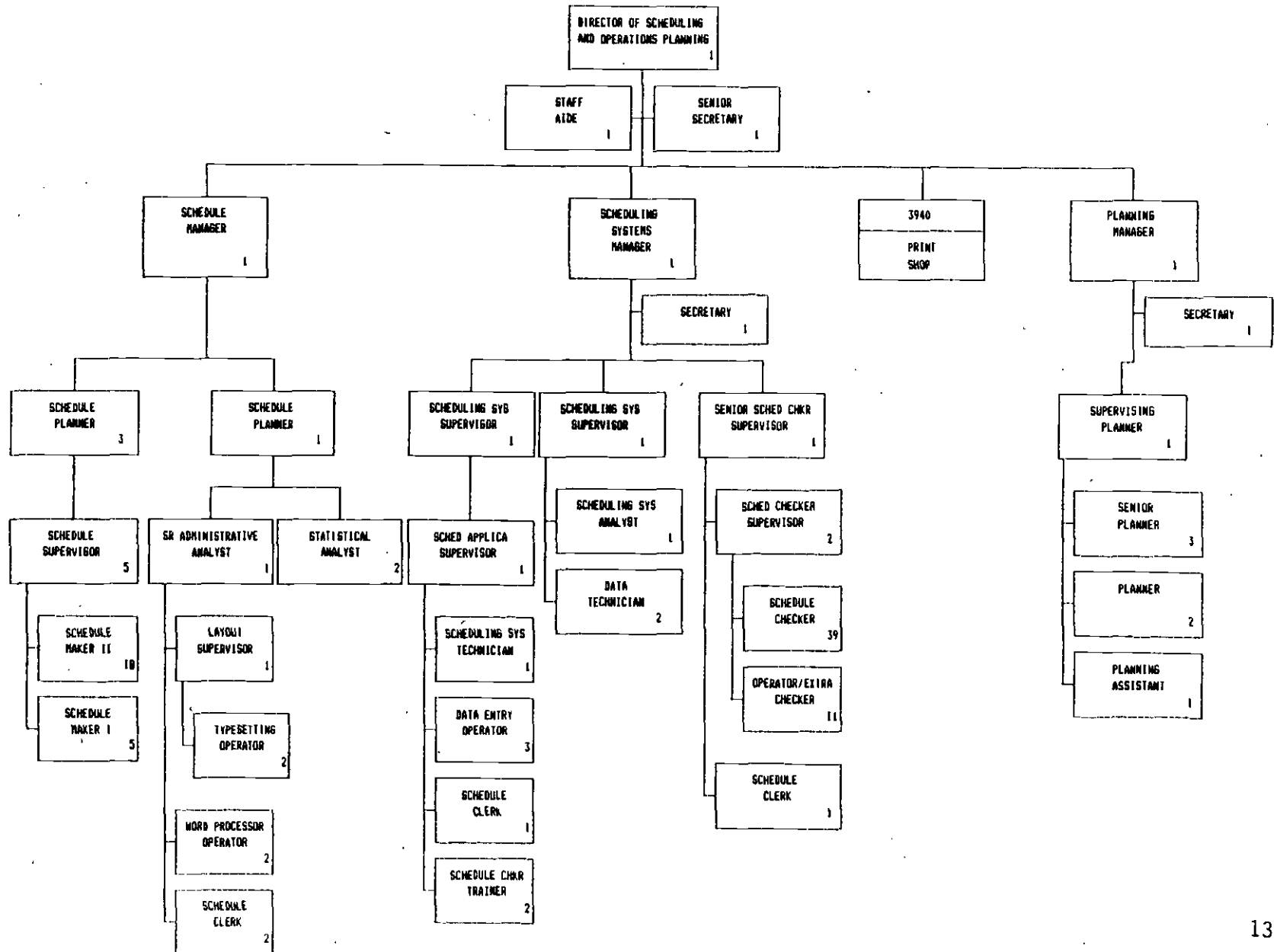




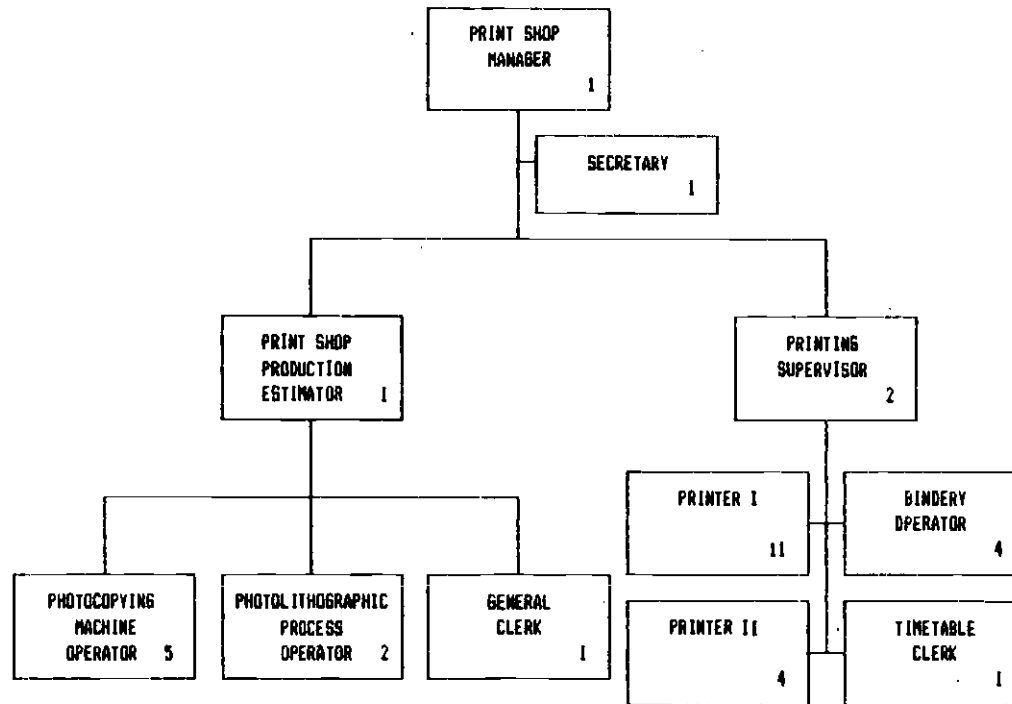




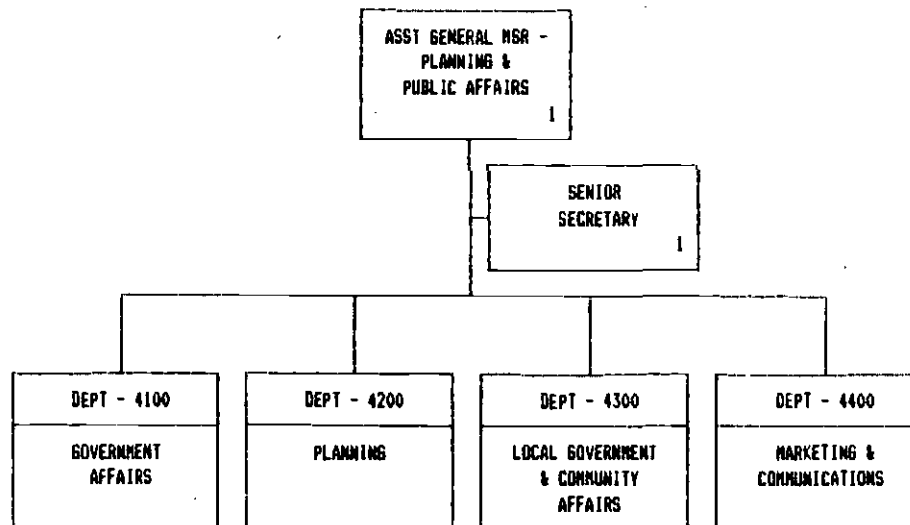


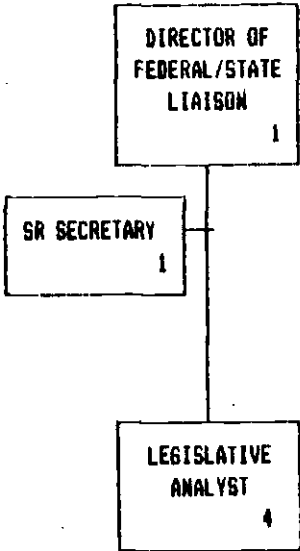


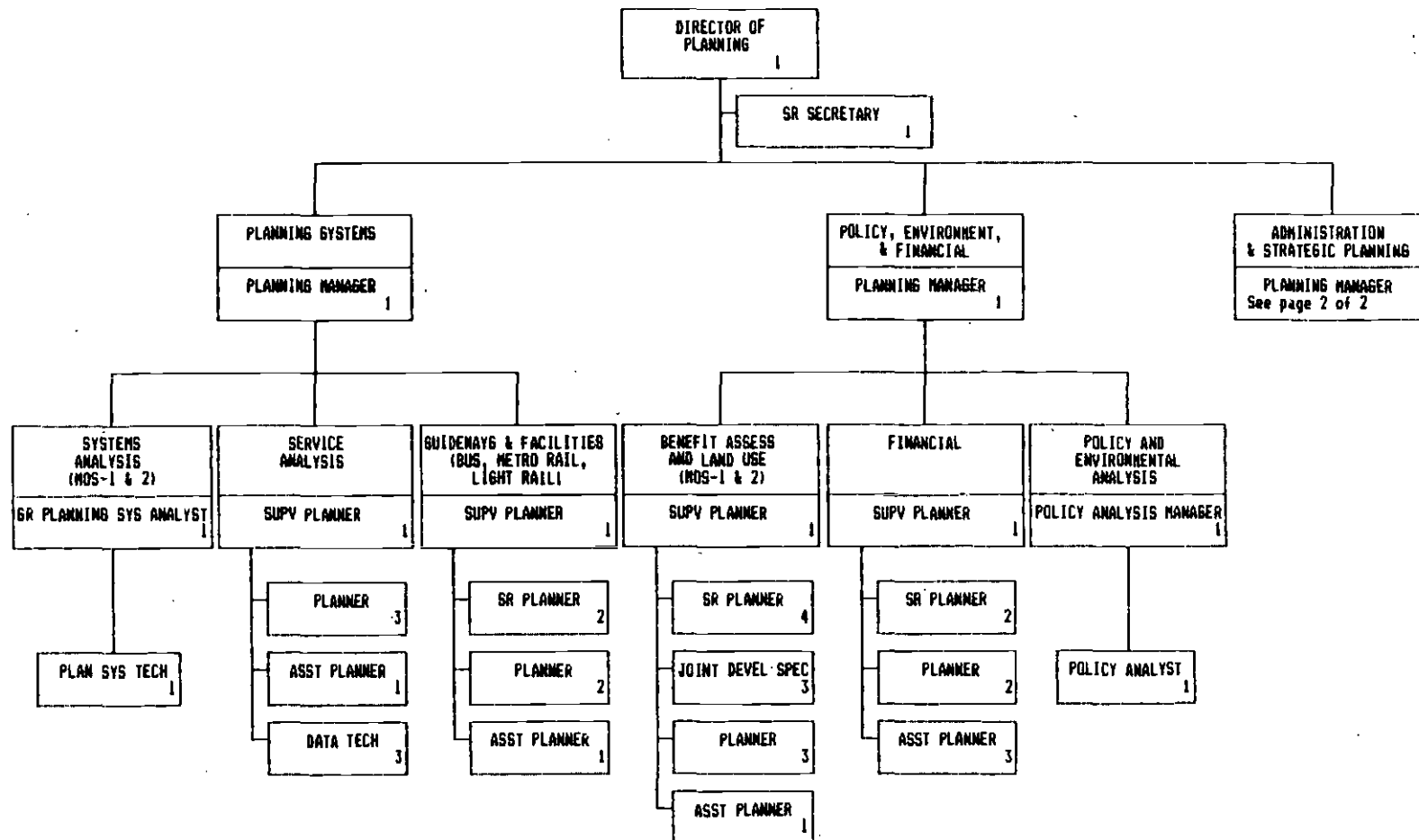


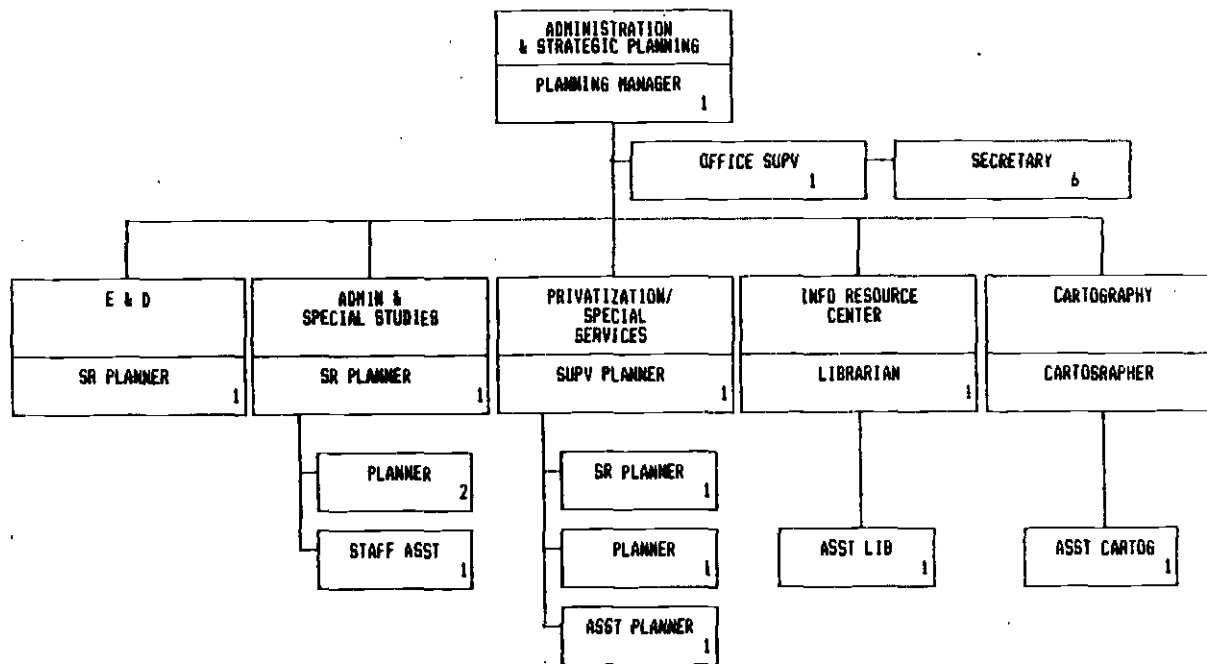


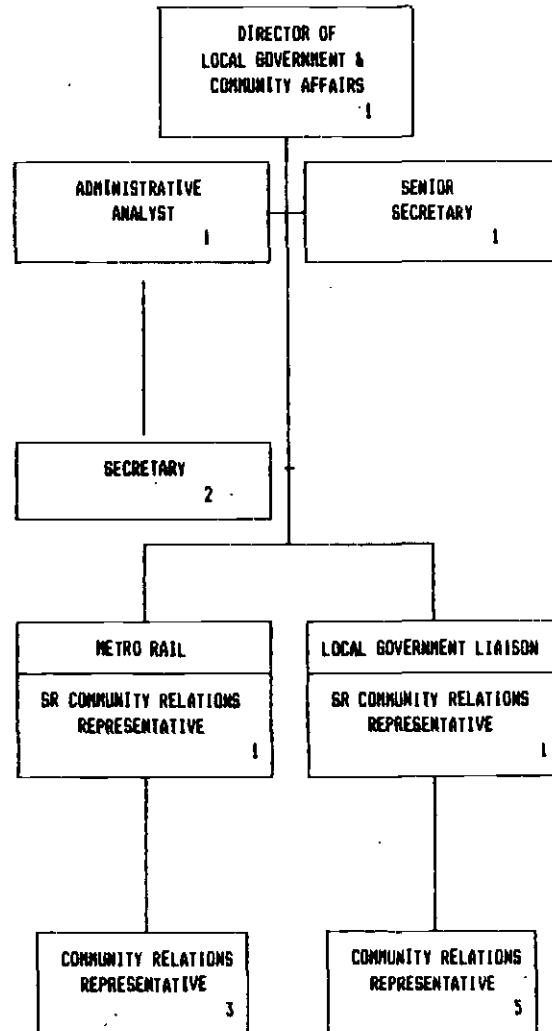
4099 - ASSISTANT GENERAL MANAGER -  
PLANNING & PUBLIC AFFAIRS

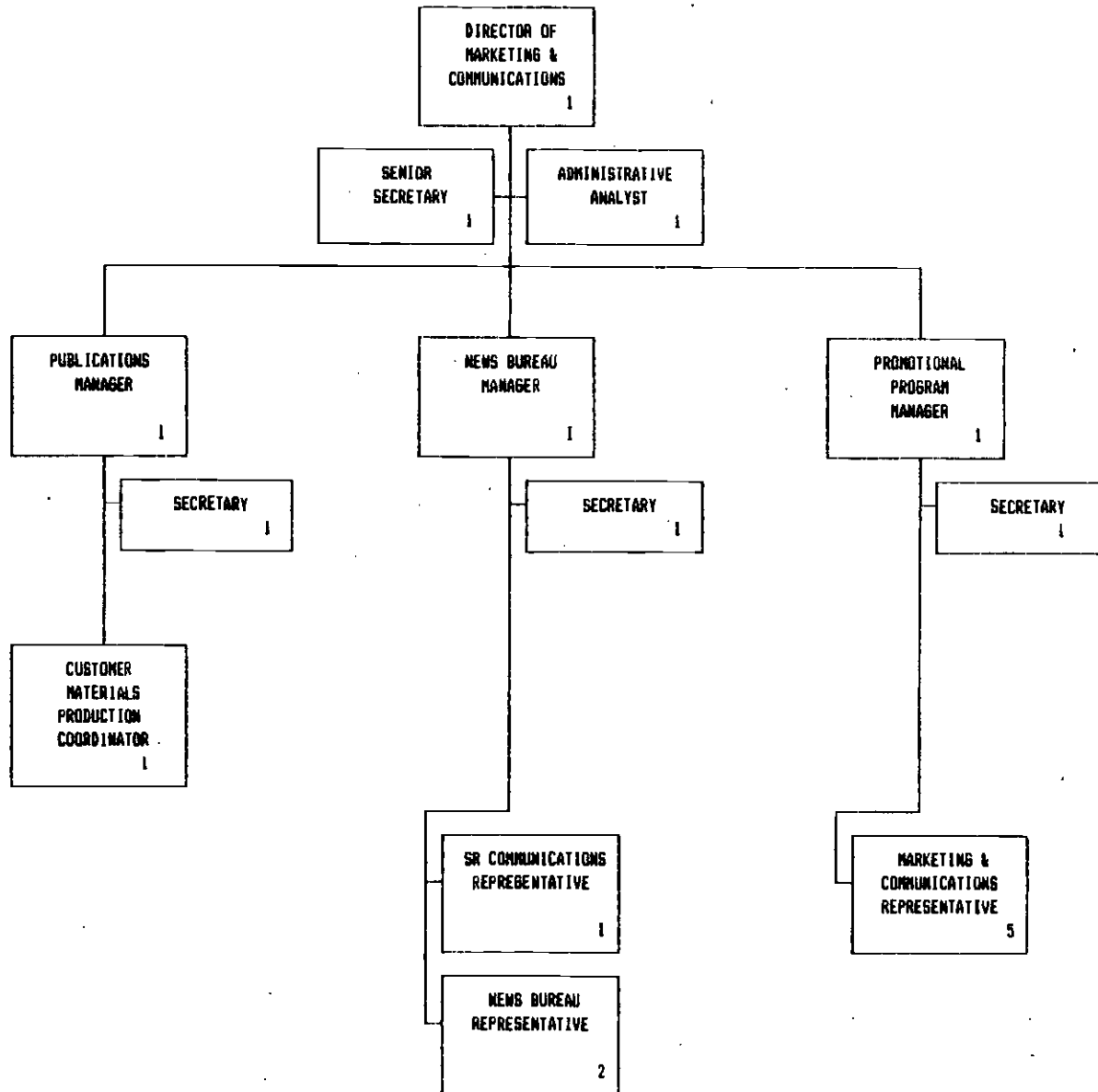


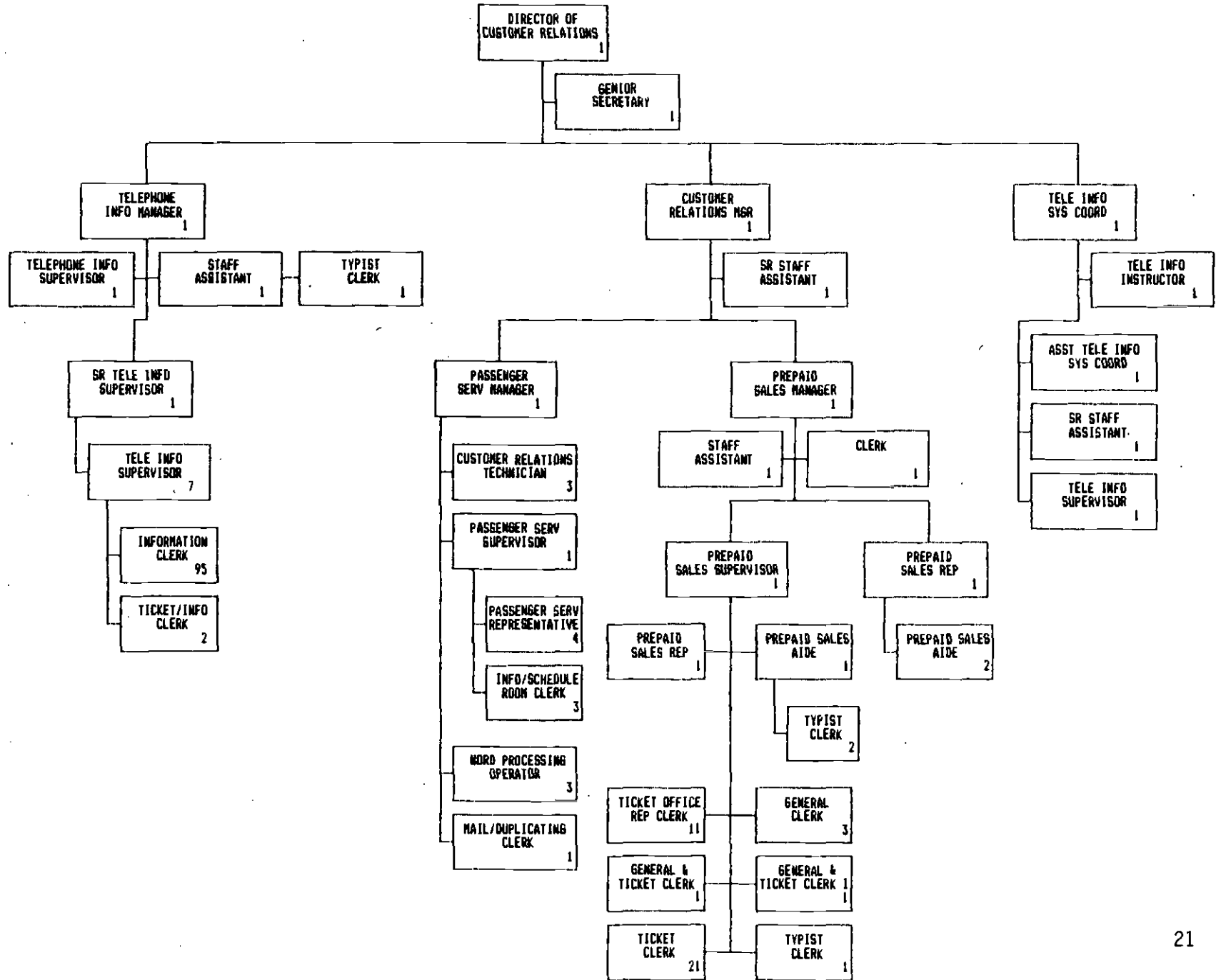




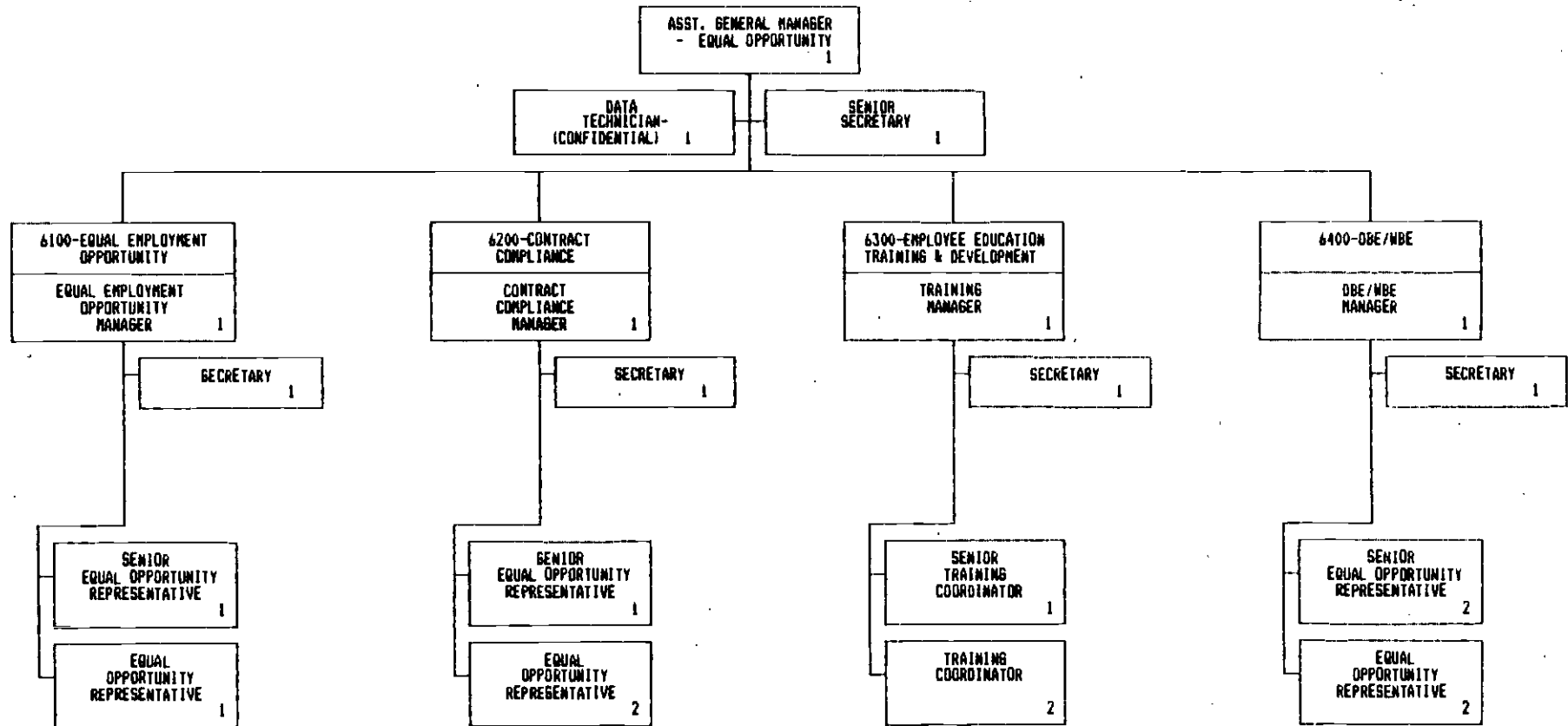


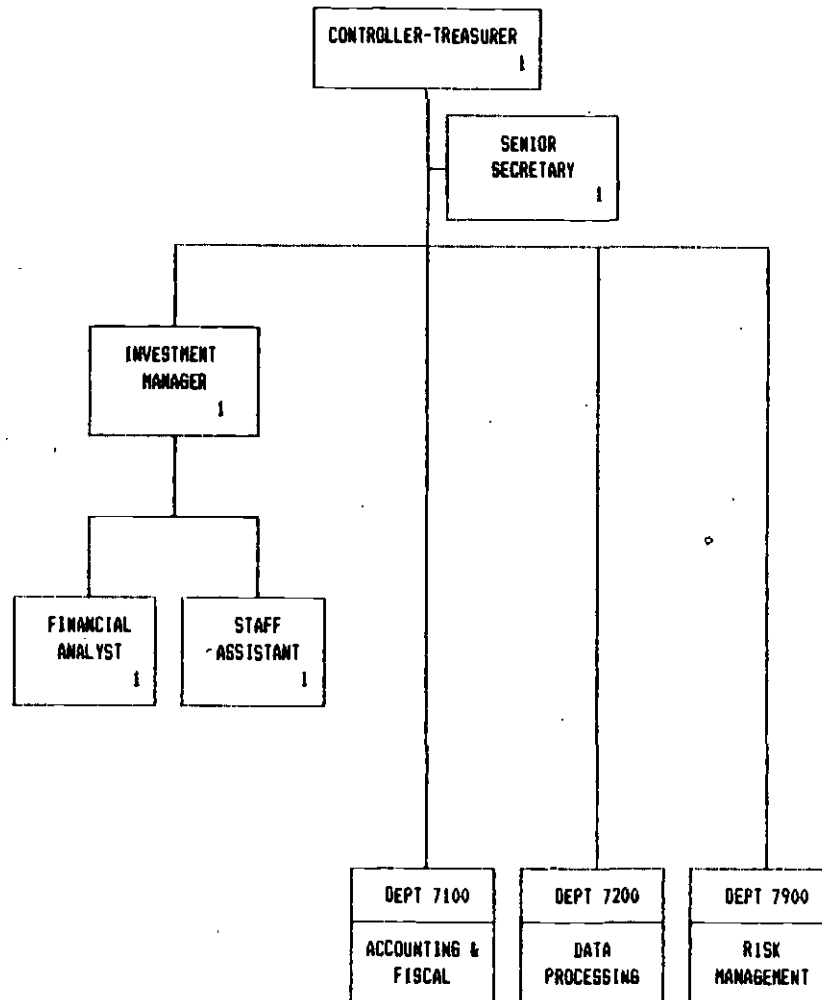


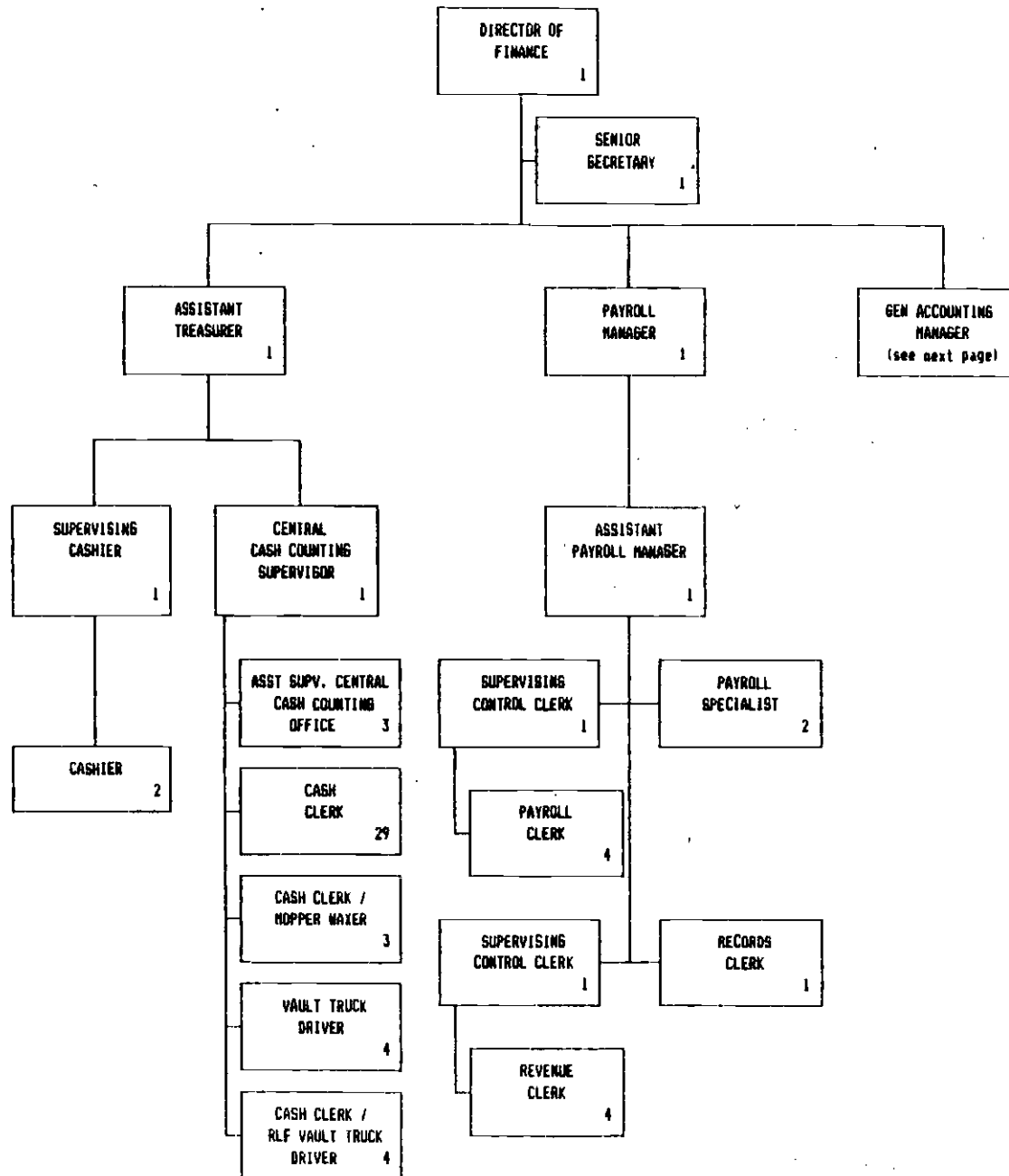


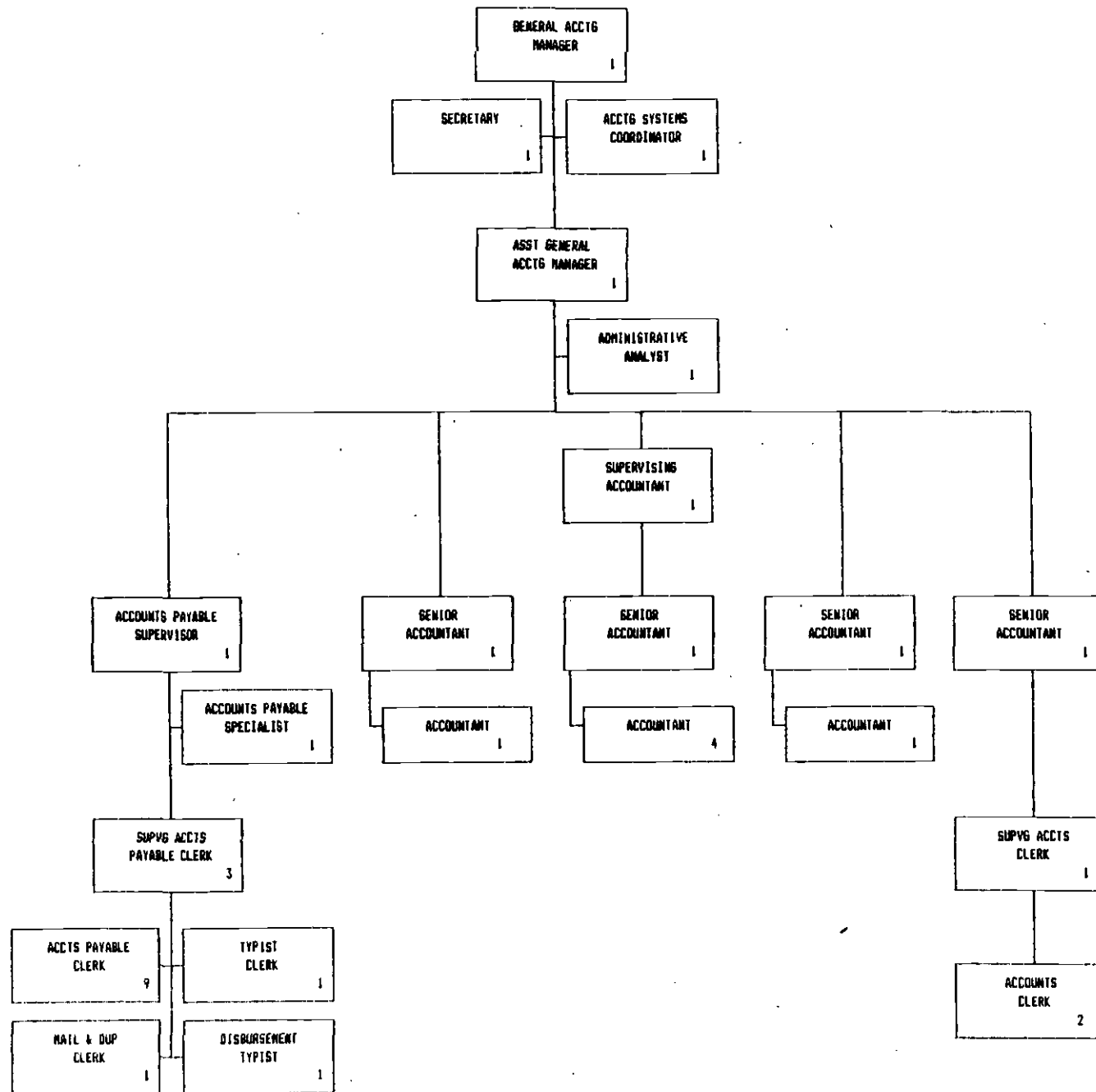


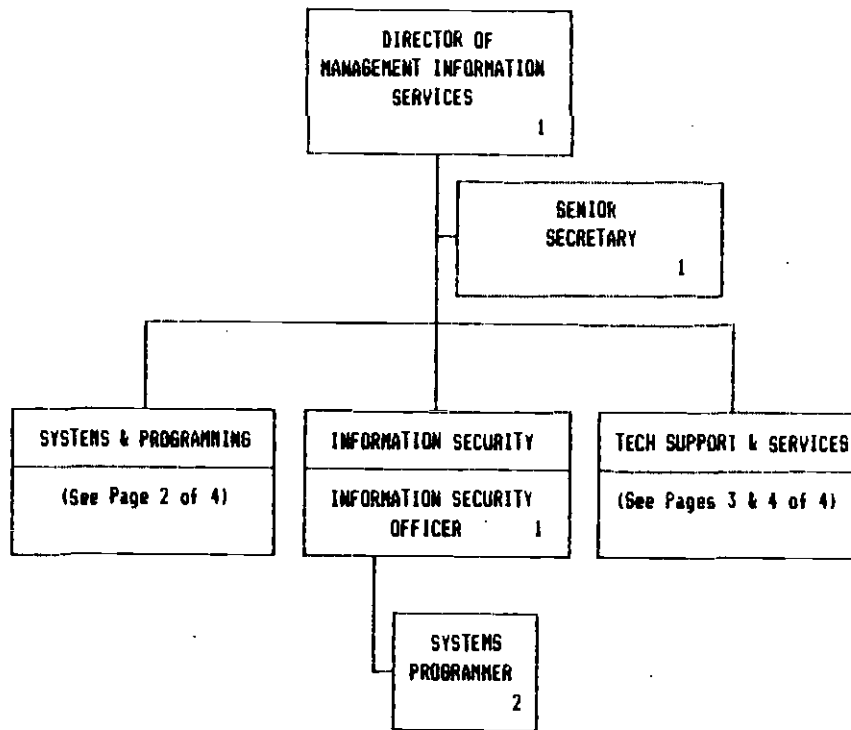


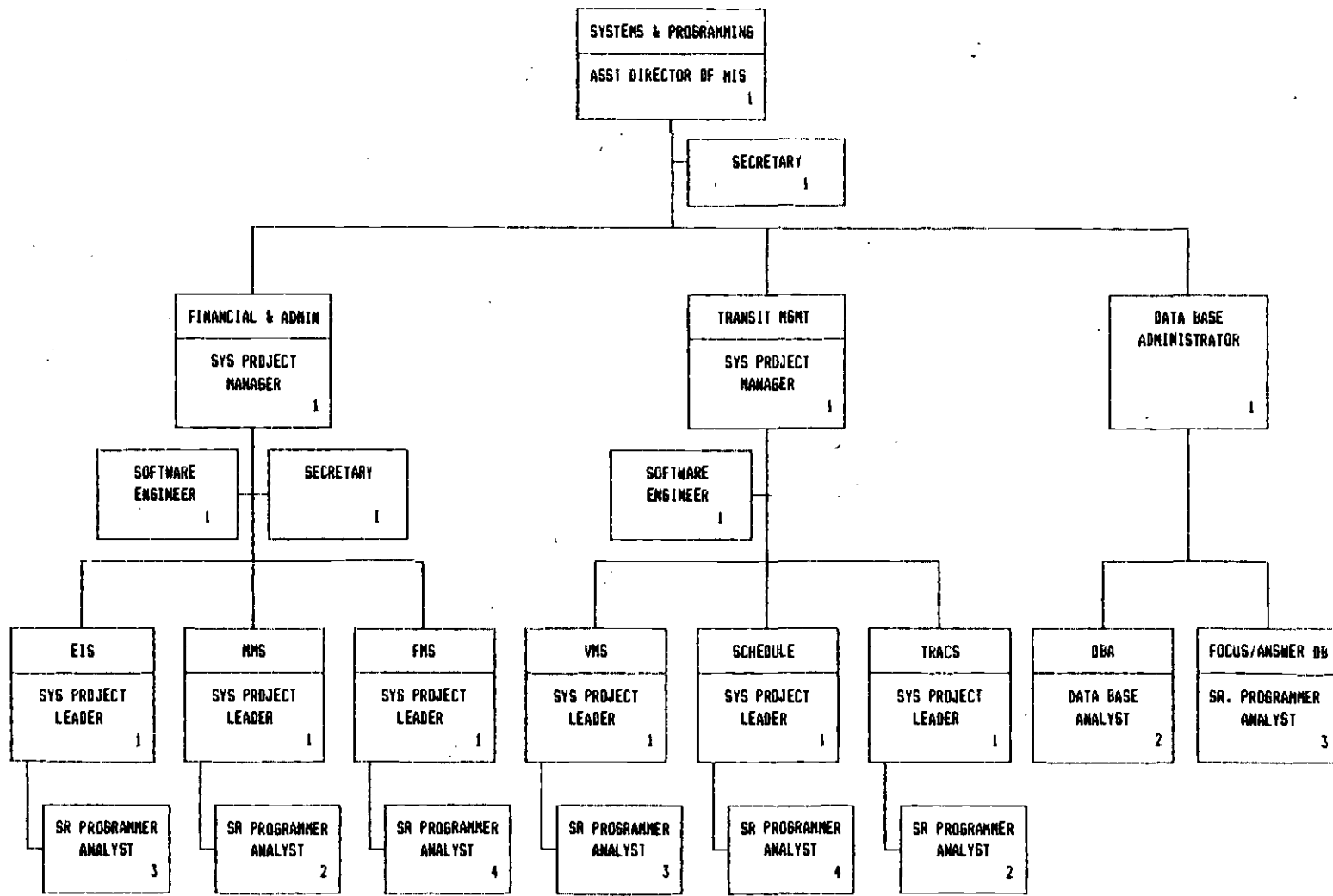


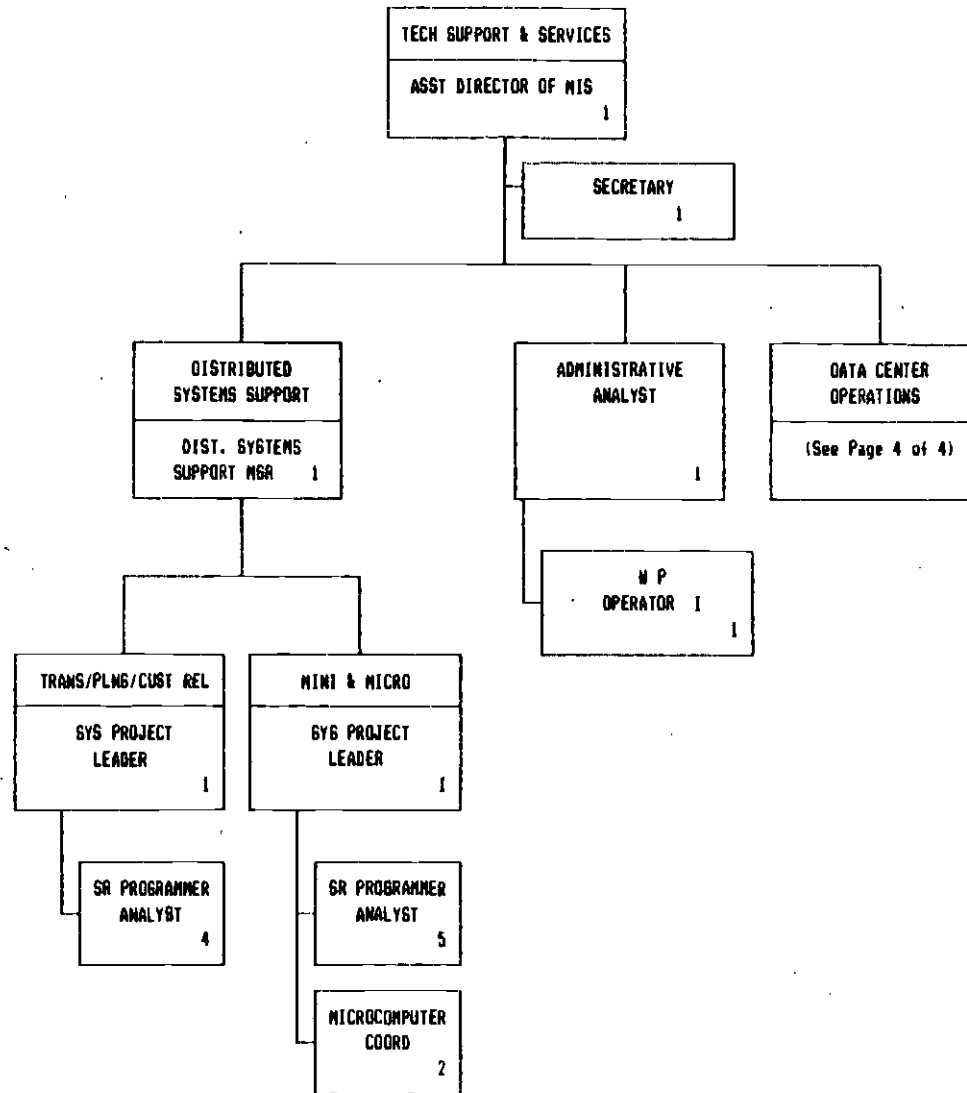


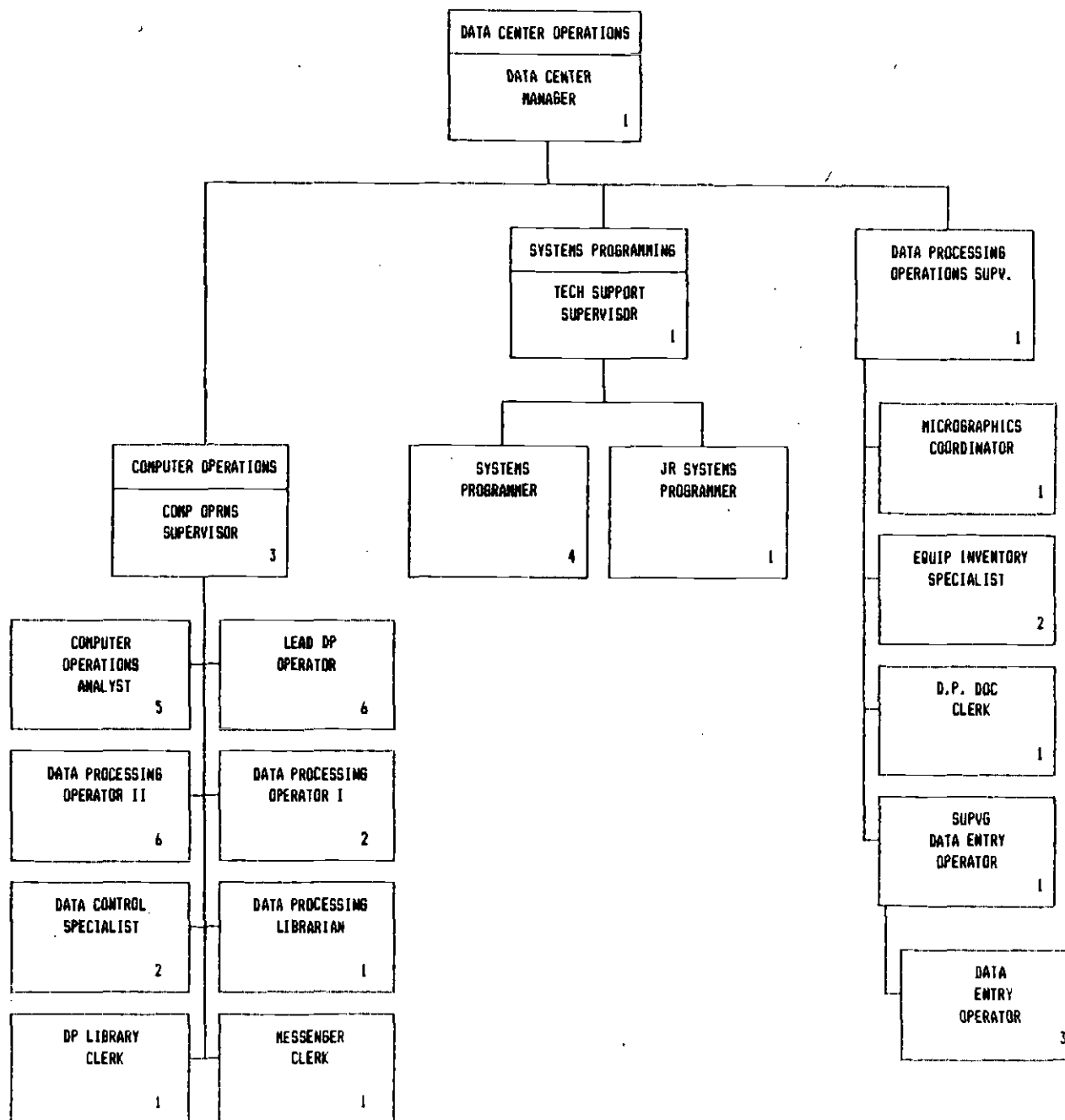




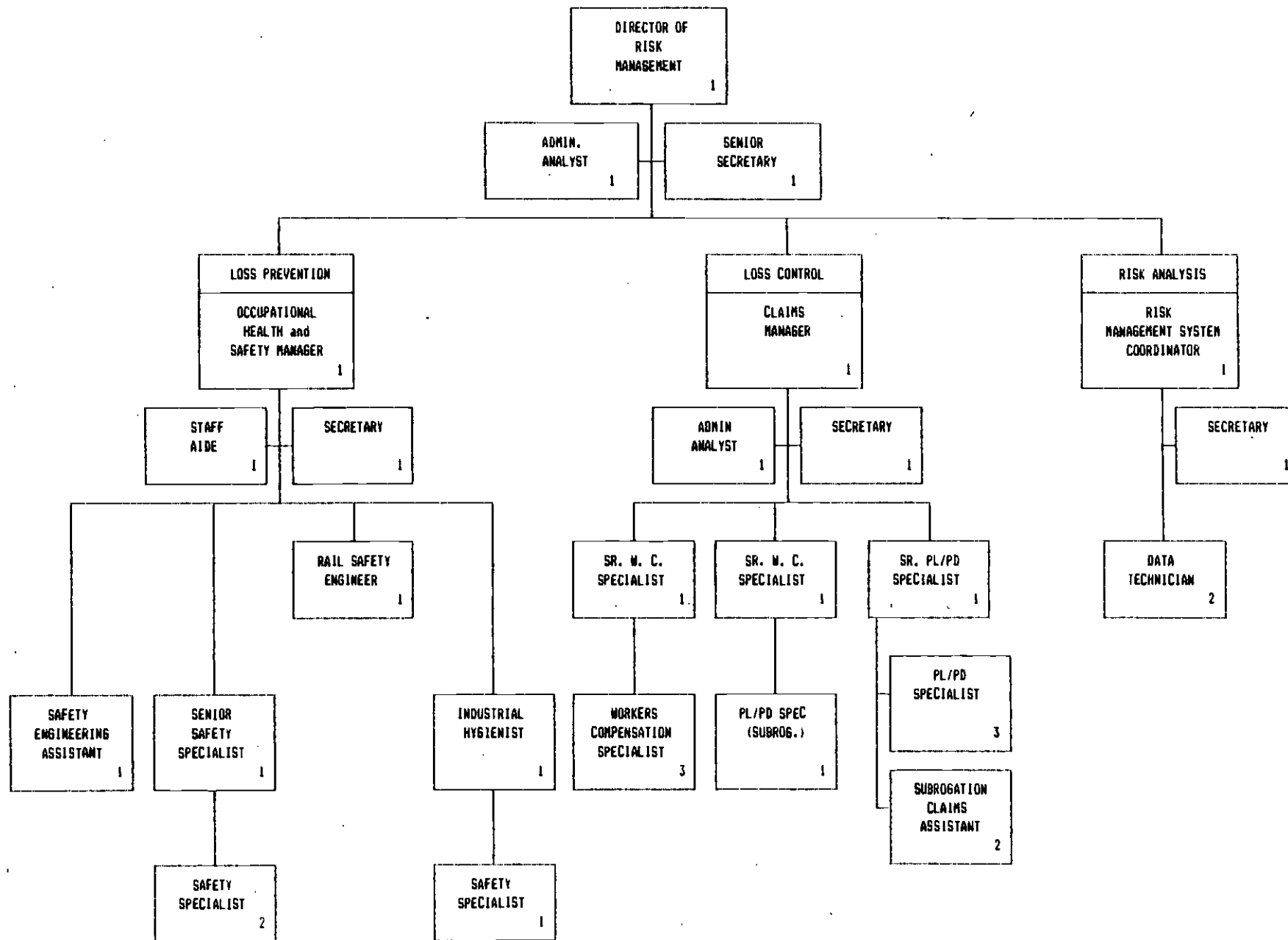


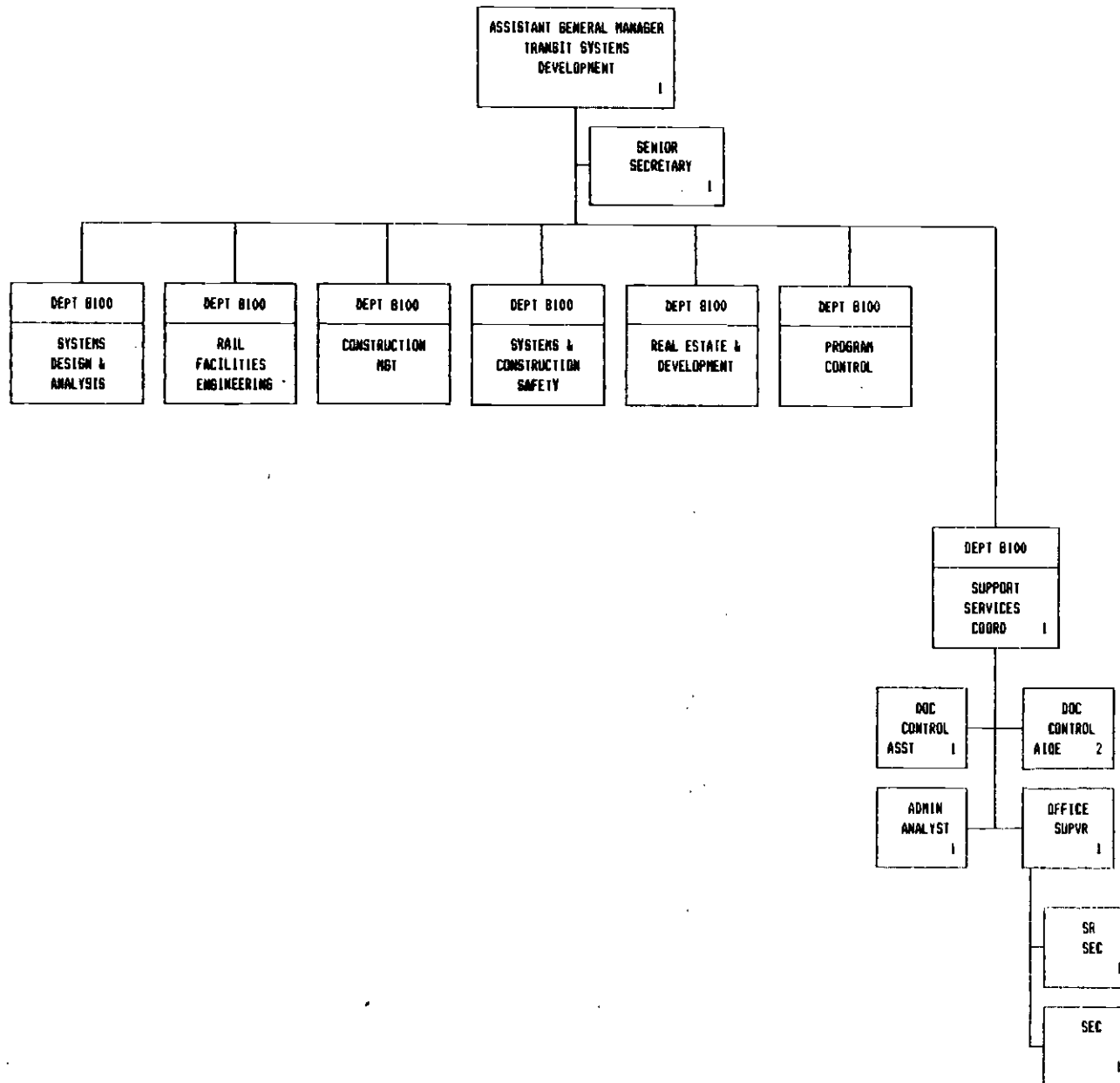


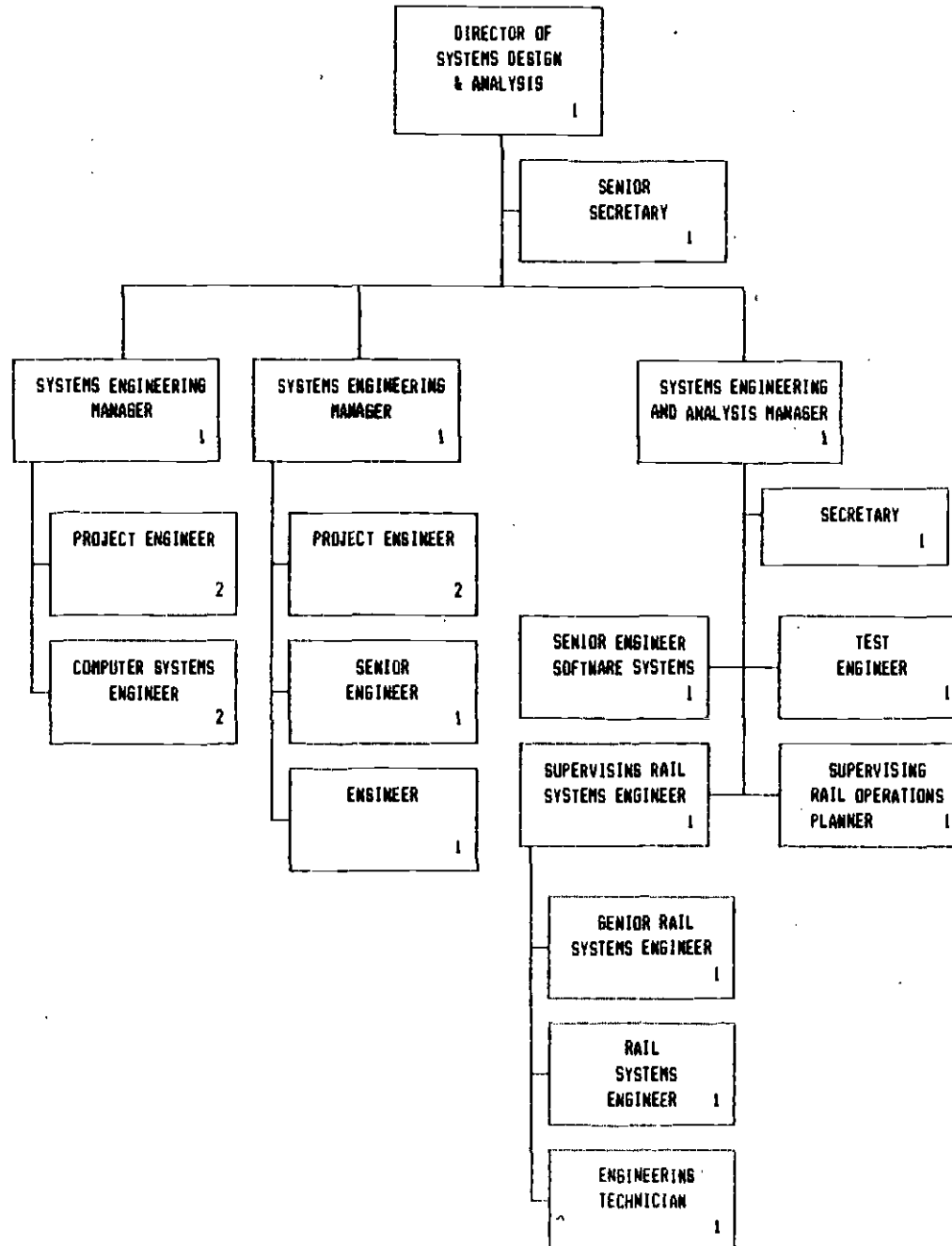


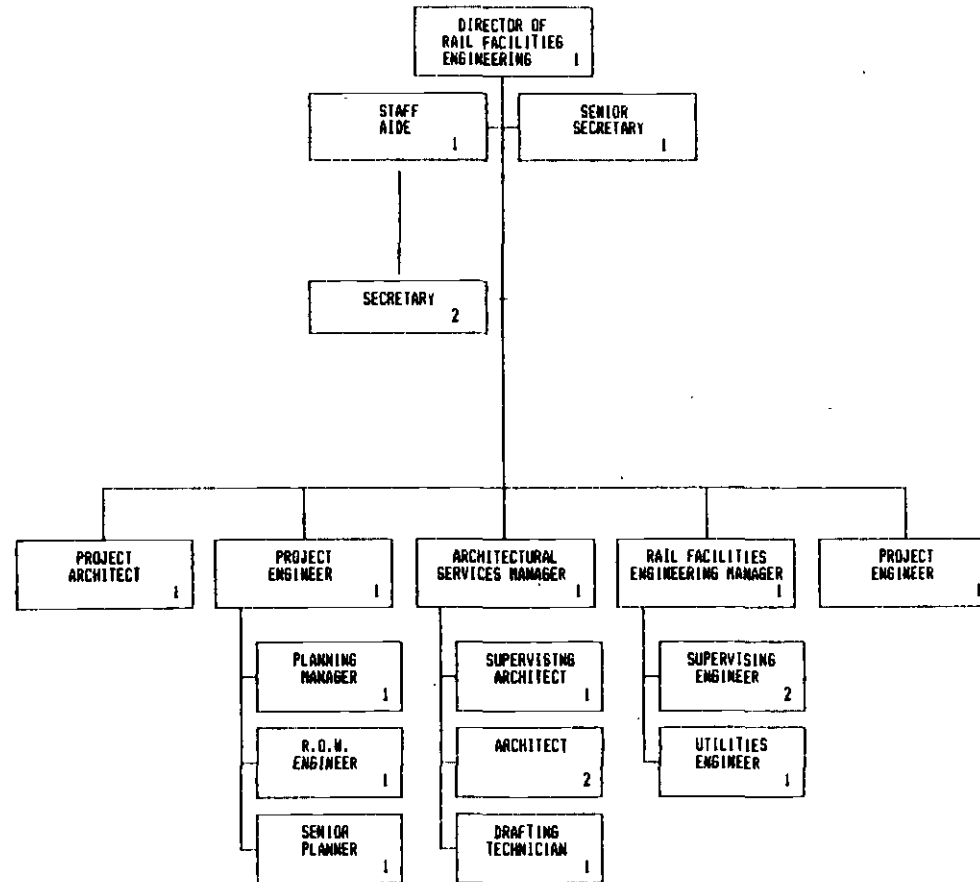


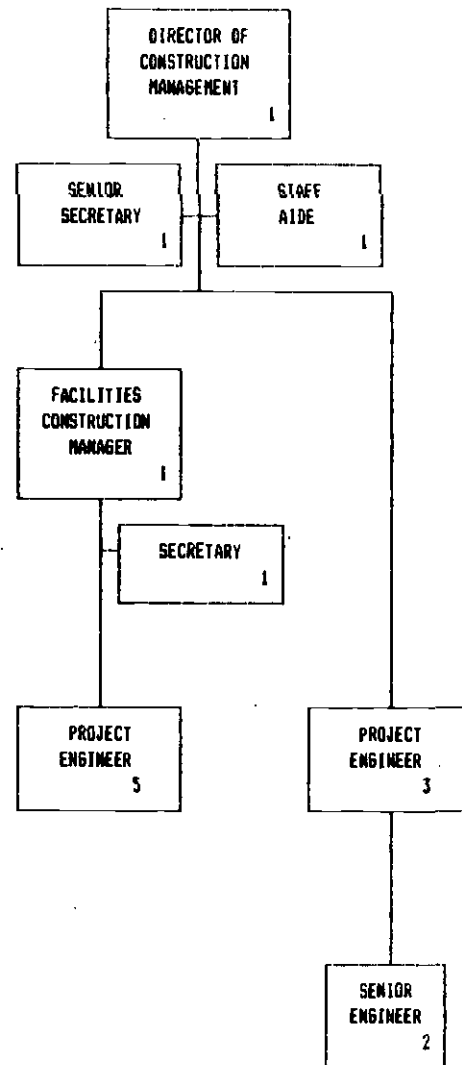


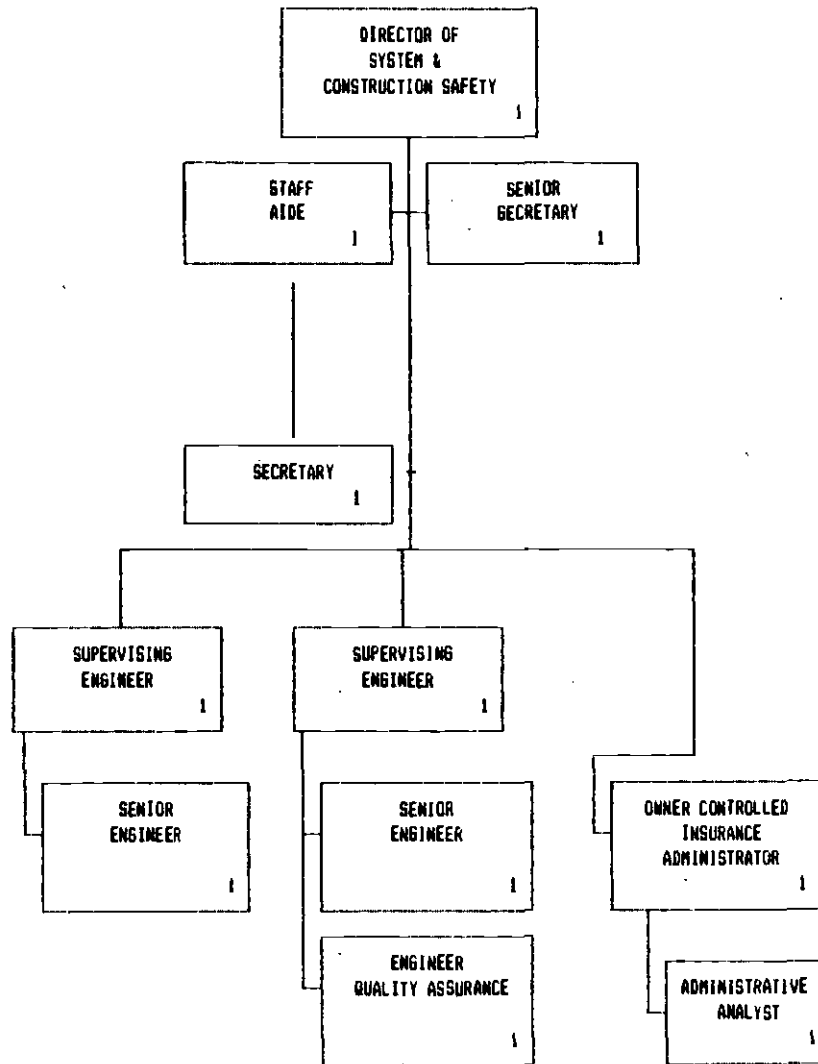


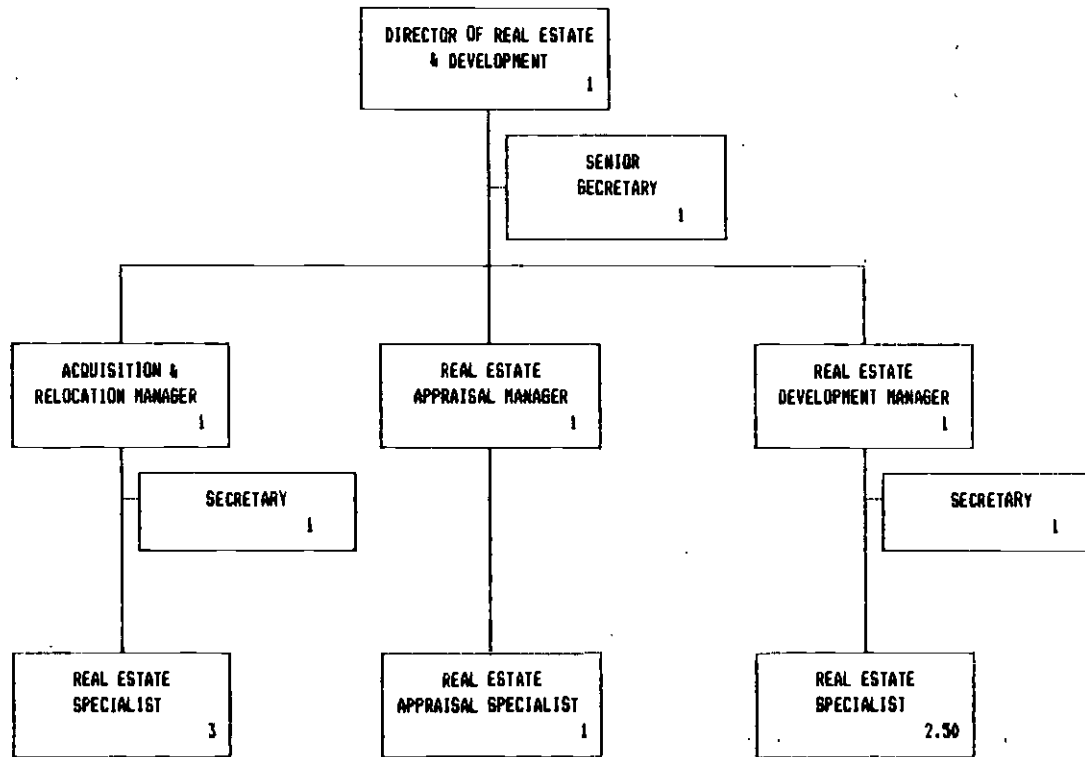


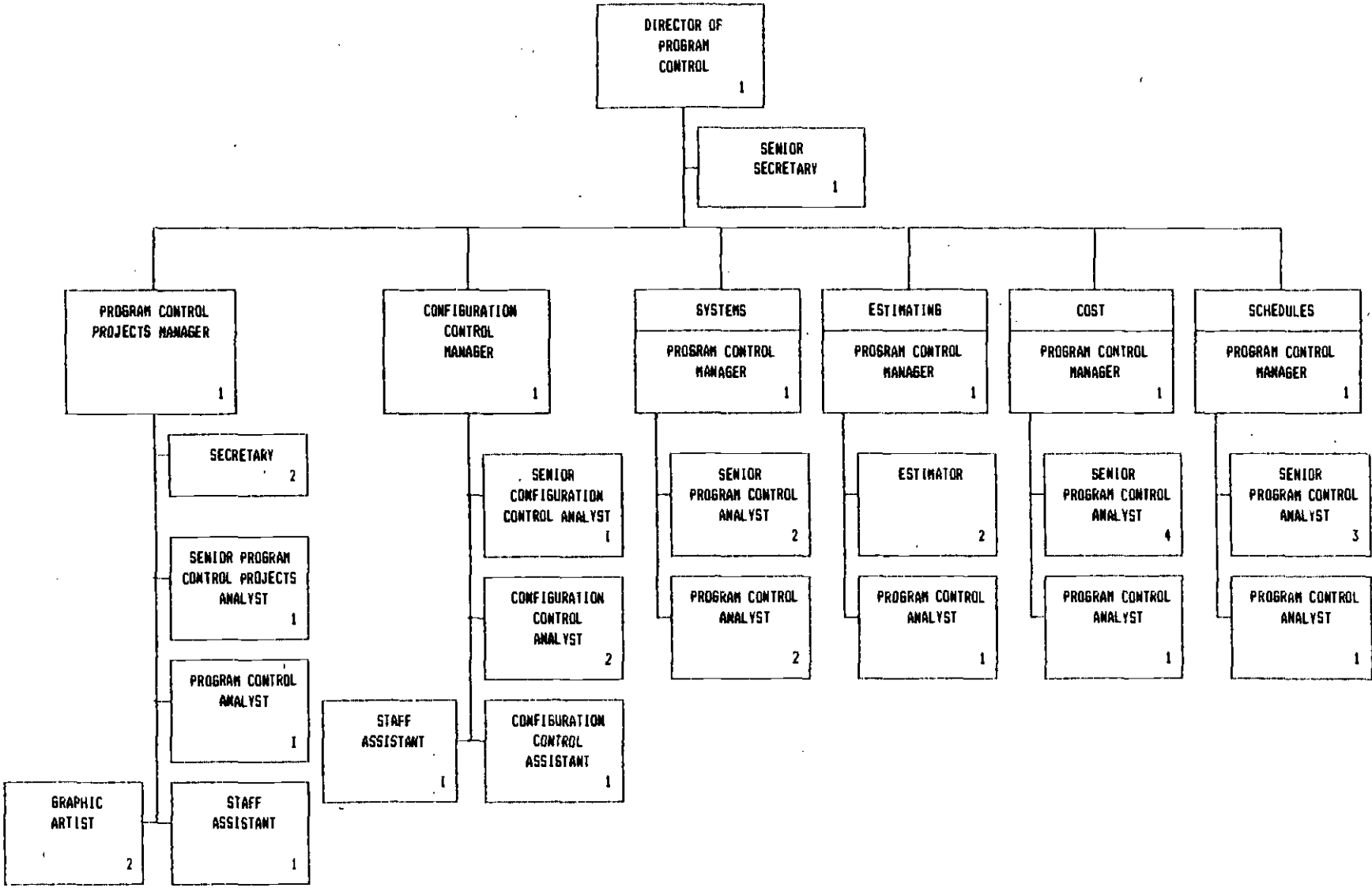














9099 - ASSISTANT GENERAL MANAGER-  
EQUIPMENT AND FACILITIES

