



Los Angeles Union Station

Key Stakeholder Capital Project Update

March 18, 2014

9:00am

Key Stakeholder Capital Project Update

AGENDA

- Introductions & Objectives
- Project Pipeline Summary
- Logistics & Planning
- Future Communications
- Q&A



Key Stakeholder Capital Project Update

PRESENTERS TODAY ARE...

- **Steve Jaffe**, Executive Officer, Human Services
- **Ken Pratt**, Director, Union Station Property Management
- **Jenna Hornstock**, Deputy Executive Officer, Countywide Planning
- **Dyana Elam**, Project Manager

OBJECTIVES...

- Discuss project progress, key milestones & mitigate impact to any extent possible
- Facilitate communication between various stakeholders

Key Stakeholder Capital Project Update

PROJECT PIPELINE SUMMARY

Restoration/Deferred Maintenance Project	complete May '14
<u>Wayfinding Signage Project</u>	Jan '14 – May '14
Landscaping Renovation Project	Mar '14 – Jun '14
Parking Lot Renovations	Apr '14 – May '14
HVAC in Historic Station	Aug '14 – Dec '14
Replace Roof of Historic Station	Aug '14 – Jan '15

WAYFINDING SIGNAGE

Key Stakeholder Capital Project Update

WAYFINDING SIGNAGE – LOGISTICS & PLANNING

- **Construction Team:**
 - Swinerton Builders
 - Selbert Perkins Design
 - Ampersand Signs
- **Scope:**
 - Preservation of the four existing historic mounted signs
 - Opening up the concourse.
 - Standard nomenclature.
 - New electronic signage in the waiting room.
 - Perimeter improvements
 - East Portal Pylon and Interactive Help Desk.
- **Schedule:**
 - Demolition of existing signage depends upon fabrication timing
 - Passageway signage – all night work
- **Miscellaneous:**
 - Change in policy for any non-standard signage going forward

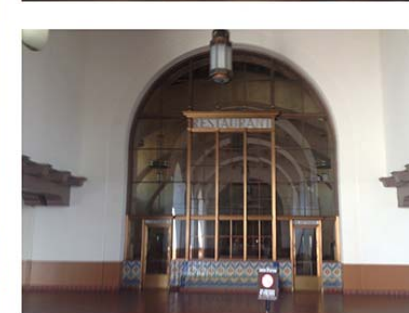
Key Stakeholder Capital Project Update

WAYFINDING SIGNAGE

PRESERVATION OF FOUR EXISTING HISTORIC SIGNS



HISTORIC SIGNAGE TO BE REMOVED AND STORED



HISTORIC SIGNAGE TO REMAIN

Key Stakeholder Capital Project Update

WAYFINDING SIGNAGE OPENING UP THE CONCOURSE



Key Stakeholder Capital Project Update

WAYFINDING SIGNAGE NEW BUS BAY MARKERS



Key Stakeholder Capital Project Update

WAYFINDING SIGNAGE

NEW ELECTRONIC SIGNAGE IN WAITING ROOM



Key Stakeholder Capital Project Update

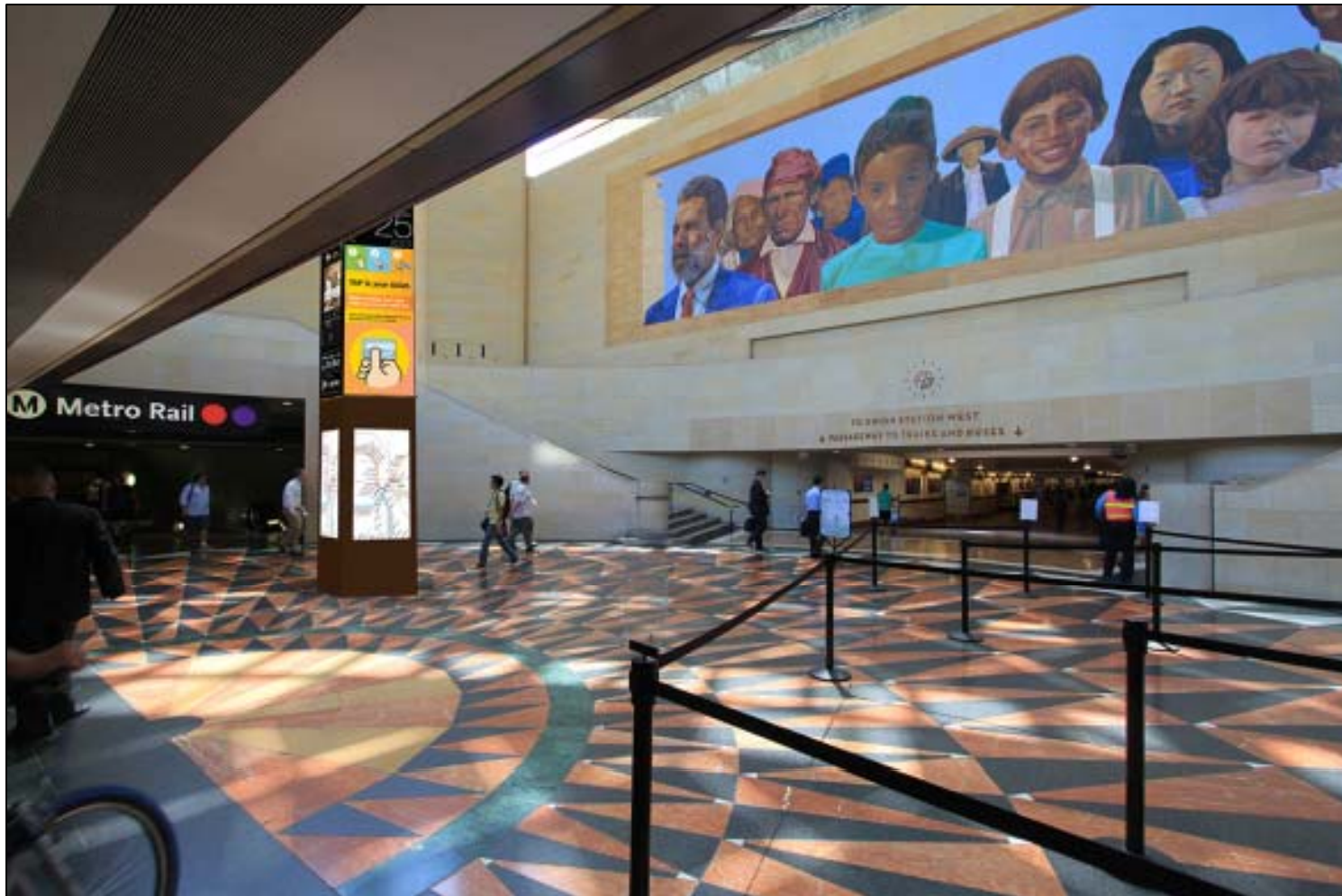
WAYFINDING SIGNAGE PERMETER IMPROVEMENTS



Key Stakeholder Capital Project Update

WAYFINDING SIGNAGE

EAST PORTAL PYLON & INTERACTIVE HELP DESK



LANDSCAPE RENOVATION

Key Stakeholder Capital Project Update

LANDSCAPE RENOVATION – LOGISTICS & PLANNING

- **Construction Team:**
 - Swinerton Builders
 - Korn Randolph Landscape Architects
 - Pierre Landscaping
- **Scope:**
 - Address water intrusion damage to structure caused by deferred maintenance
 - Replace waterproofing, landscaping, electrical & irrigation systems that have exceeded their useful life
- **Schedule:**
 - Phased planning approach
 - Plaza shut down
 - #1 – Friday, April 11th @ 9pm through Monday, April 14th @ 4am
 - #2 – Friday, May 16th @ 9pm through Monday, May 19th @ 4am
 - #3 – as necessary
- **Miscellaneous:**
 - Site Specific Safety Plan
 - Pedestrian Safety on Bus Plaza

Key Stakeholder Capital Project Update

LANDSCAPING RENOVATION SCHEDULE

Arroyo Area:

March 24 through May 3

Patsaouras Plaza:

March 18 through May 20

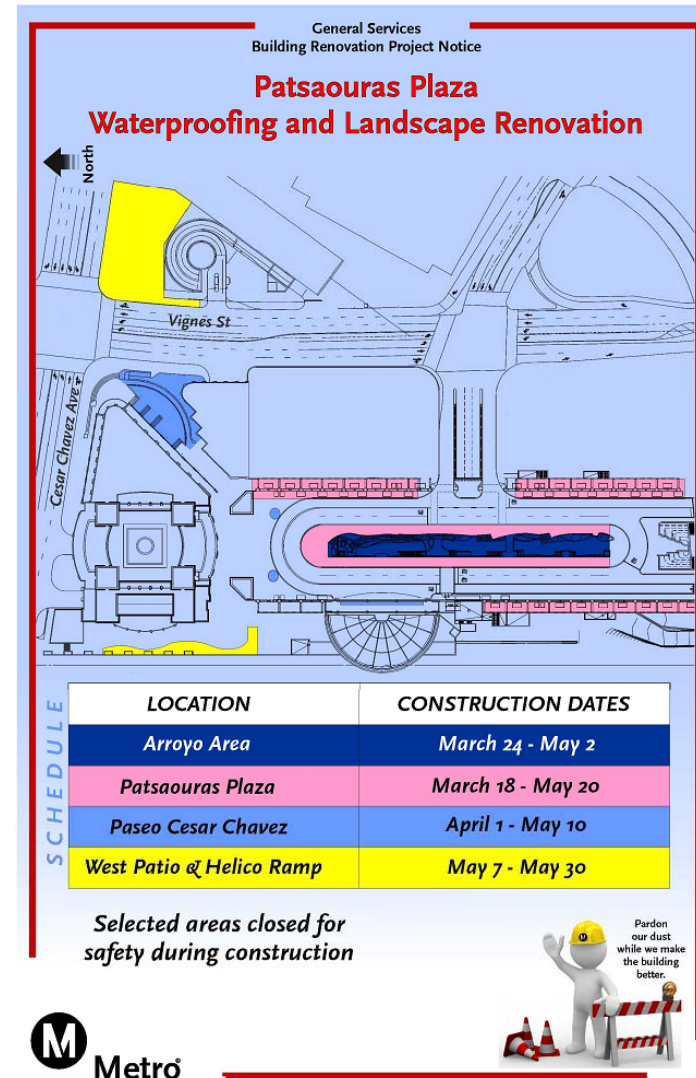
Paseo Cesar Chavez:

April 1 through May 10

West Patio & Helico Ramp:

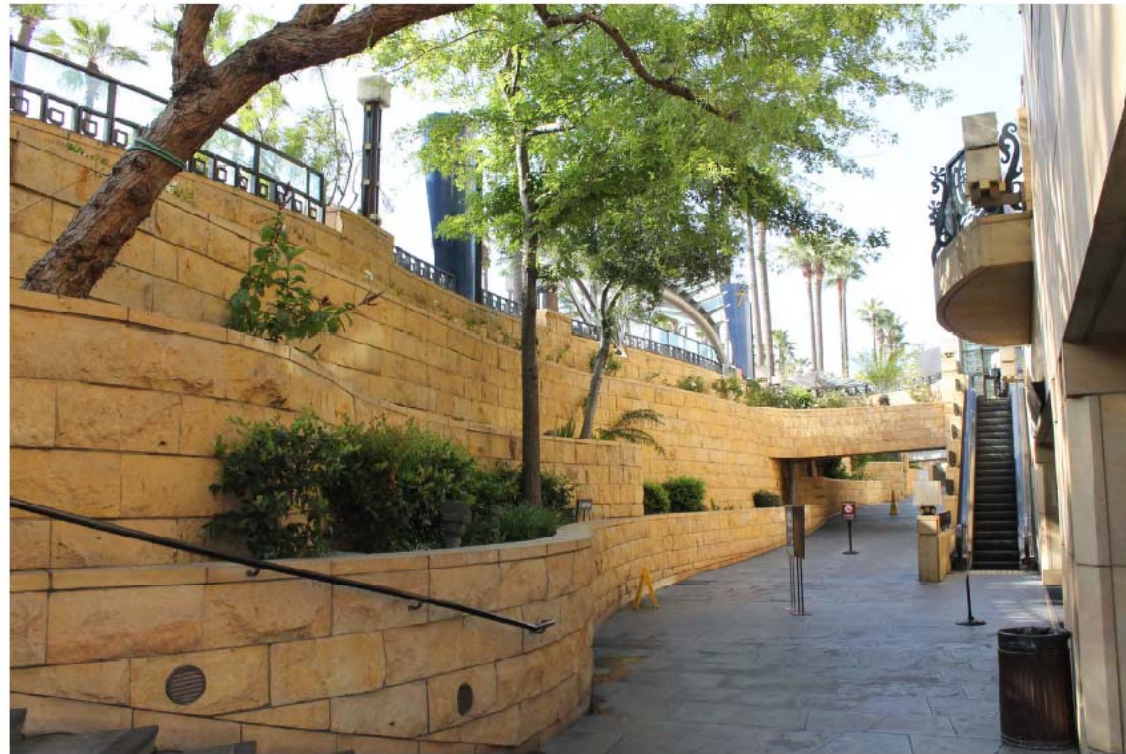
May 7 through May 30

** Schedule subject to change*



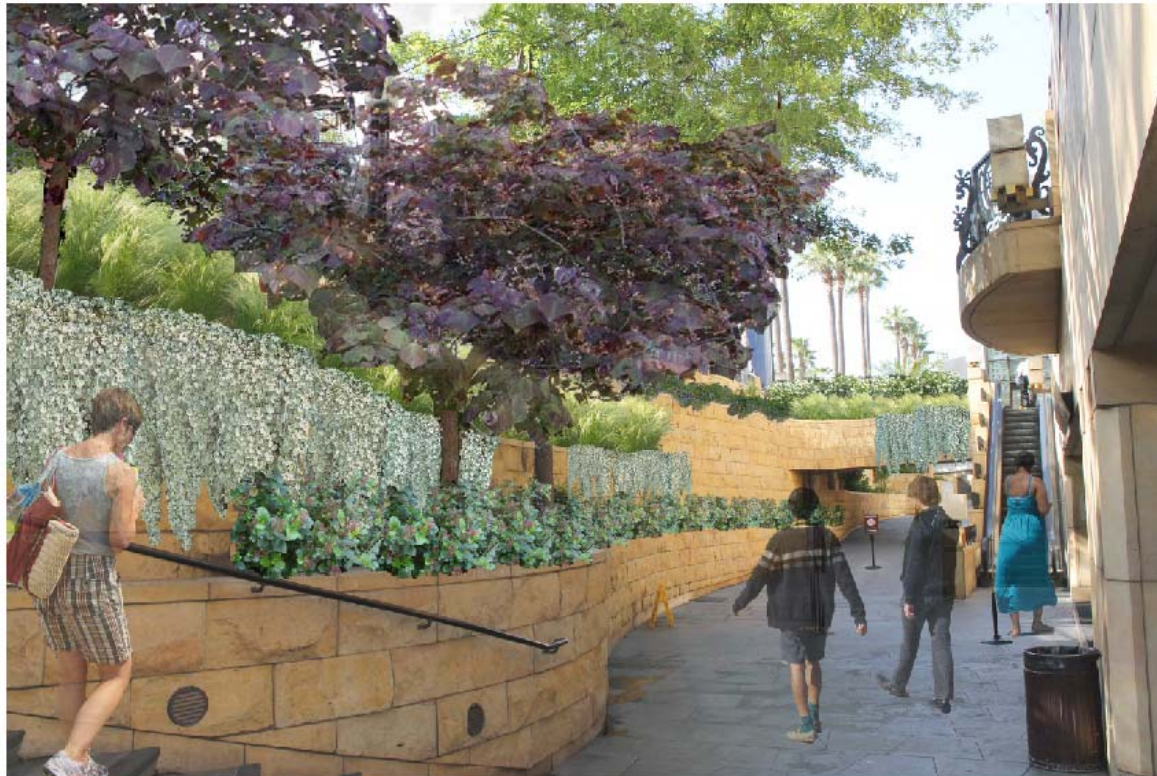
Key Stakeholder Capital Project Update

LANDSCAPING RENOVATION ARROYO - BEFORE



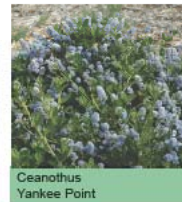
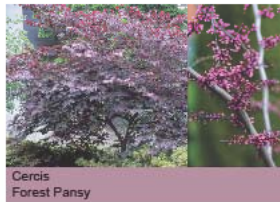
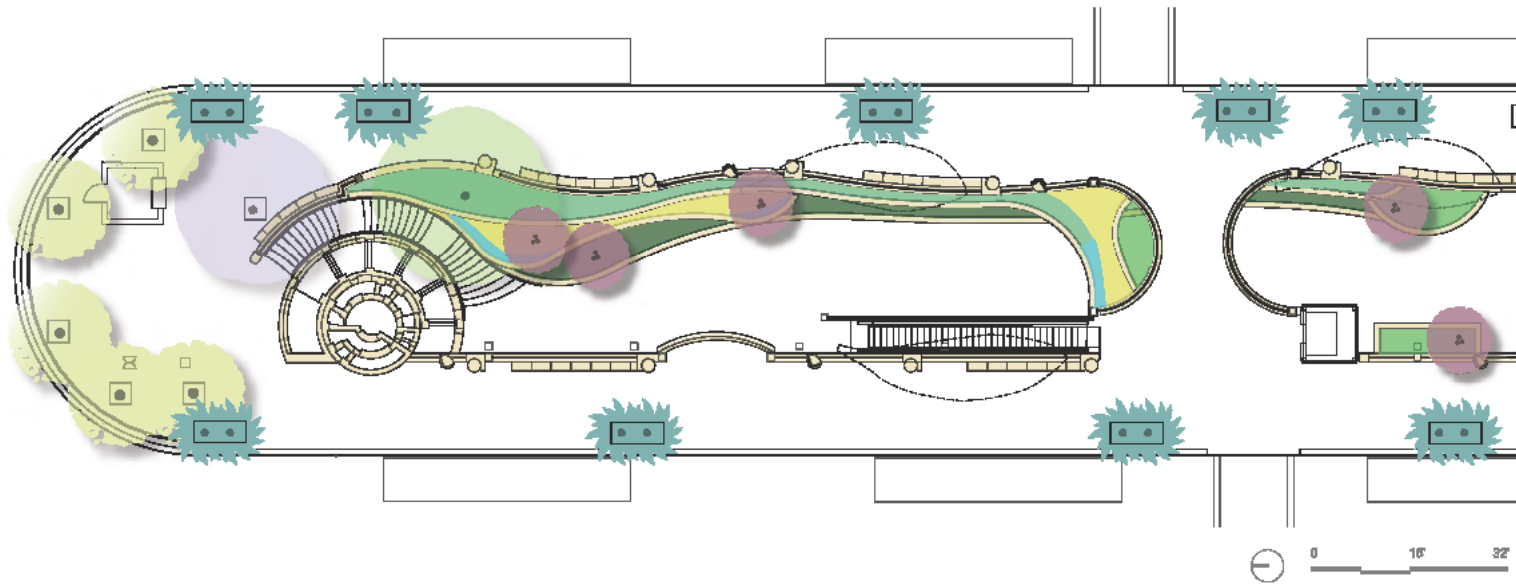
Key Stakeholder Capital Project Update

LANDSCAPING RENOVATION ARROYO - AFTER



Key Stakeholder Capital Project Update

LANDSCAPING RENOVATION ARROYO – COLOR PALLETTE



proposed plan and palette

Key Stakeholder Capital Project Update

LANDSCAPING RENOVATION PATSAOURAS BUS PLAZA - BEFORE



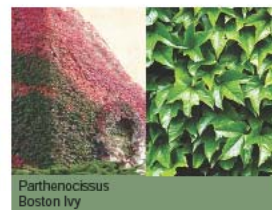
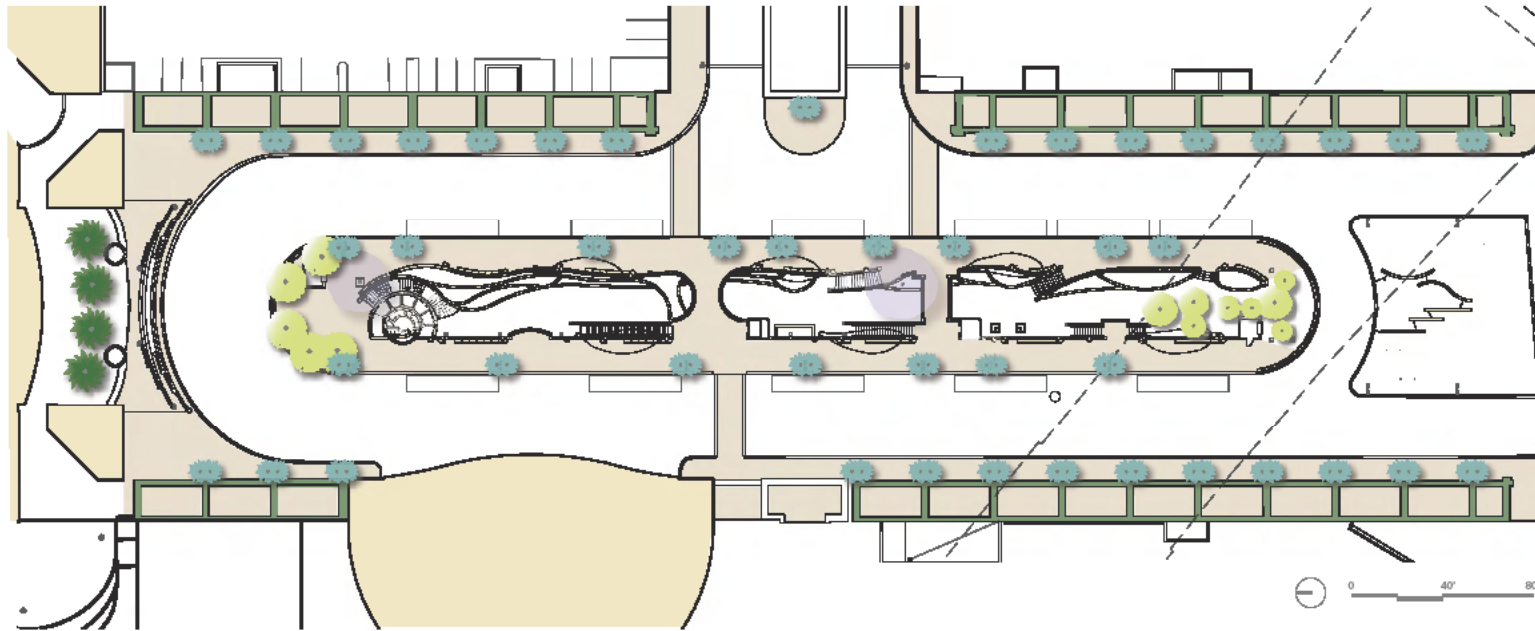
Key Stakeholder Capital Project Update

LANDSCAPING RENOVATION PATSAOURAS BUS PLAZA - AFTER



Key Stakeholder Capital Project Update

LANDSCAPING RENOVATION PATSAOURAS BUS PLAZA – COLOR PALLETTE



proposed plan and palette

Key Stakeholder Capital Project Update

LANDSCAPING RENOVATION PASEO CESAR CHAVEZ - BEFORE



existing

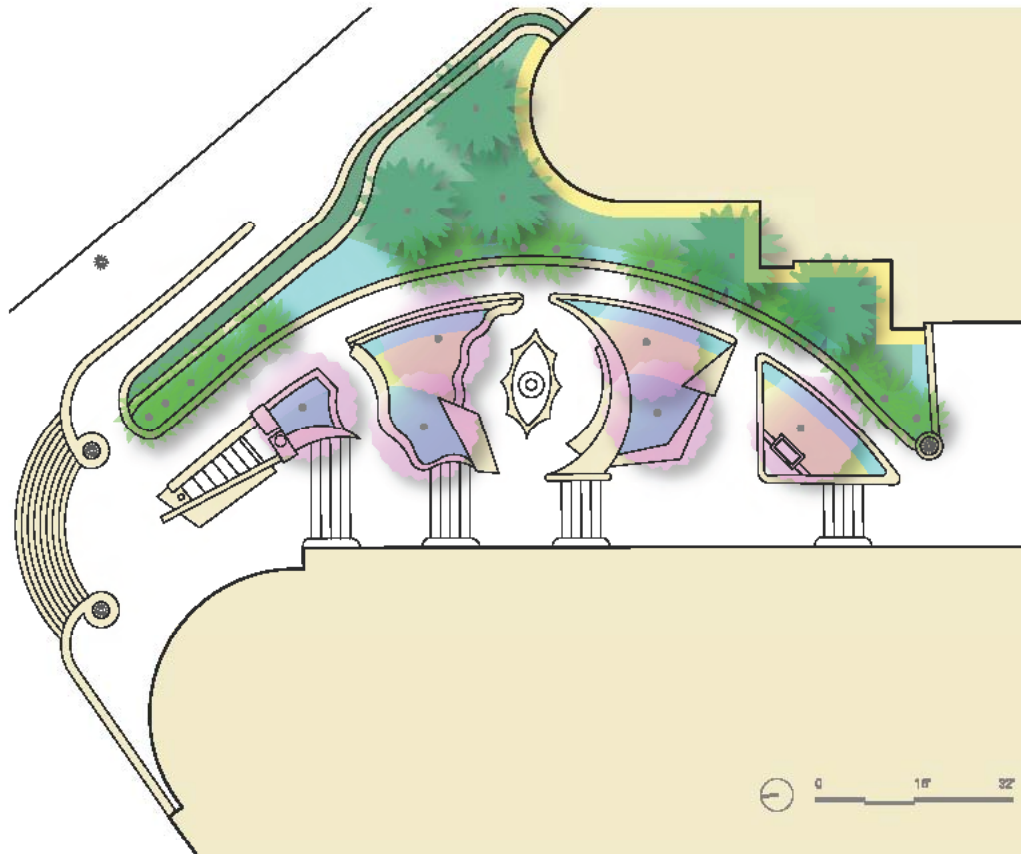
Key Stakeholder Capital Project Update

LANDSCAPING RENOVATION PASEO CESAR CHAVEZ - AFTER



Key Stakeholder Capital Project Update

LANDSCAPING RENOVATION PASEO CESAR CHAVEZ – COLOR PALLETTE



proposed plan and palette

Key Stakeholder Capital Project Update

LANDSCAPING RENOVATION WEST PLAZA - BEFORE



existing

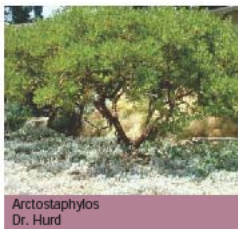
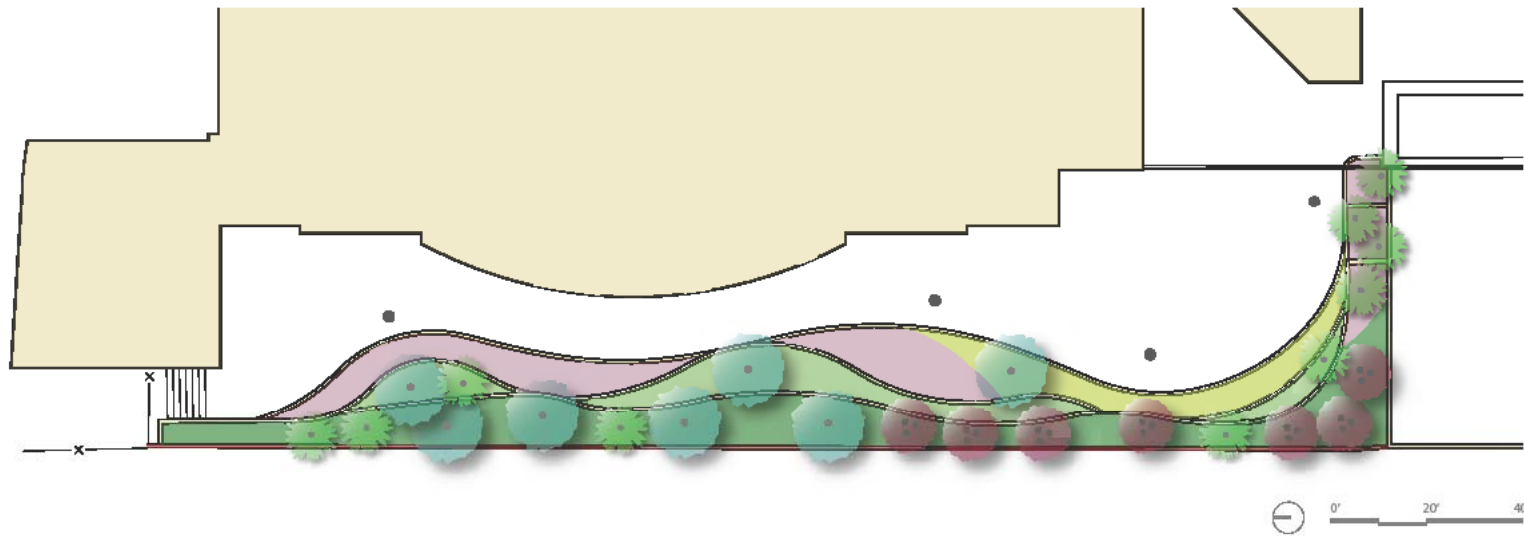
Key Stakeholder Capital Project Update

LANDSCAPING RENOVATION WEST PLAZA- AFTER



Key Stakeholder Capital Project Update

LANDSCAPING RENOVATION WEST PLAZA— COLOR PALLETTE



proposed plan and palette

Key Stakeholder Capital Project Update

LANDSCAPING RENOVATION HELICAL PLAZA - BEFORE



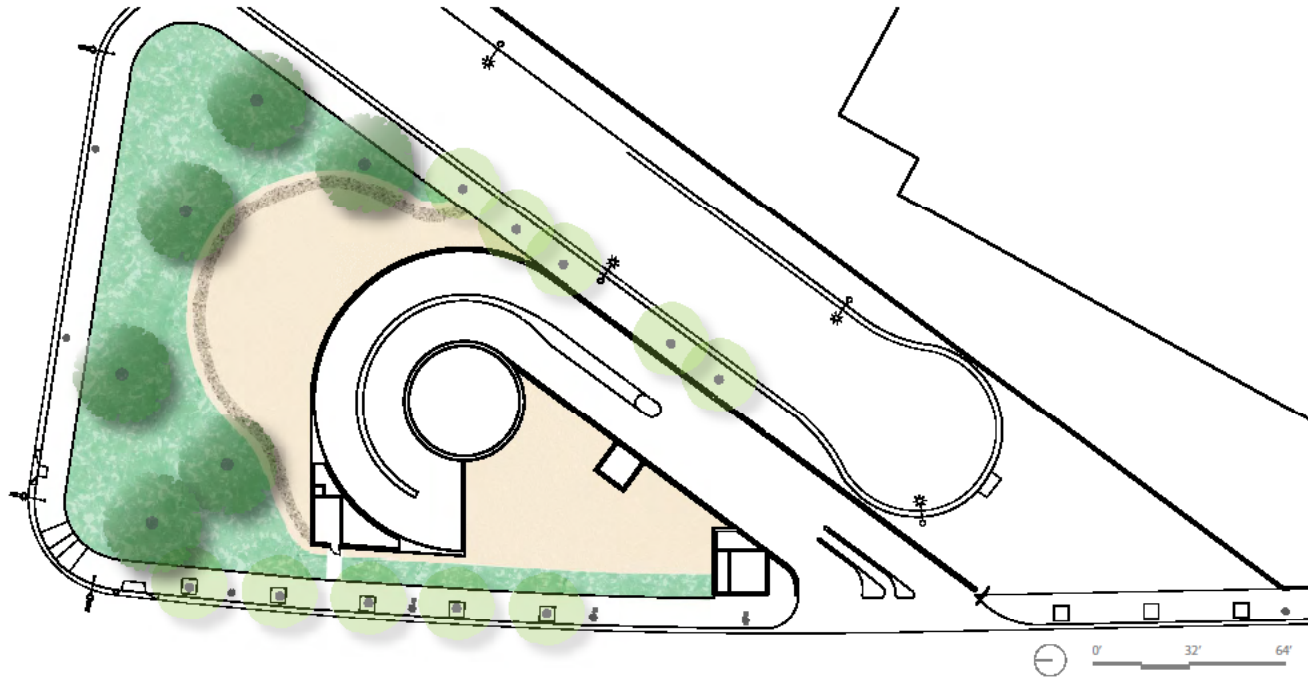
Key Stakeholder Capital Project Update

LANDSCAPING RENOVATION HELICAL PLAZA- AFTER



Key Stakeholder Capital Project Update

LANDSCAPING RENOVATION HELICAL PLAZA— COLOR PALLETTE



Quercus
Coast Live Oak



Achillea
Yarrow



Rock
low stone edge



Autumn Gold
decomposed granite

proposed plan and palette

Key Stakeholder Capital Project Update

SITE SAFETY & STAFF TRAINING

SWINERTON BUILDERS commitment to Safety!

- Mandatory Employee Safety Orientation
- Daily Safety Huddles prior to shift start
- Daily Safety Inspections throughout shift
- Badge Program – employees check in and out every day with Superintendent
- Daily written Job Hazard Analyses are collected and reviewed

Key Stakeholder Capital Project Update

FUTURE COMMUNICATIONS

Continuation of bi-weekly Capital Project Updates.

Q & A





For questions or concerns, please contact the Union Station team:

Dyana Elam, Project Manager | 818-804-1037 | d.elam@morlinmgmt.com

Ben Neil II, Sr. Project Manager | 818-248-8504 | b.neil@morlinmgmt.com

Steve Jaffe, Executive Officer, General Services | 213-922-6284 | jaffes@metro.net

Phyllis Meng, Deputy Executive Officer, General Services | 213-922-2375 | mengp@metro.net

Ken Pratt, Director, Union Station Property Management | 213-922-6288 | prattk@metro.net

<http://thesource.metro.net/2014/03/10/signage-project-to-improve-way-finding-at-union-station-set-to-begin-march-11/>