



US Department
of Transportation

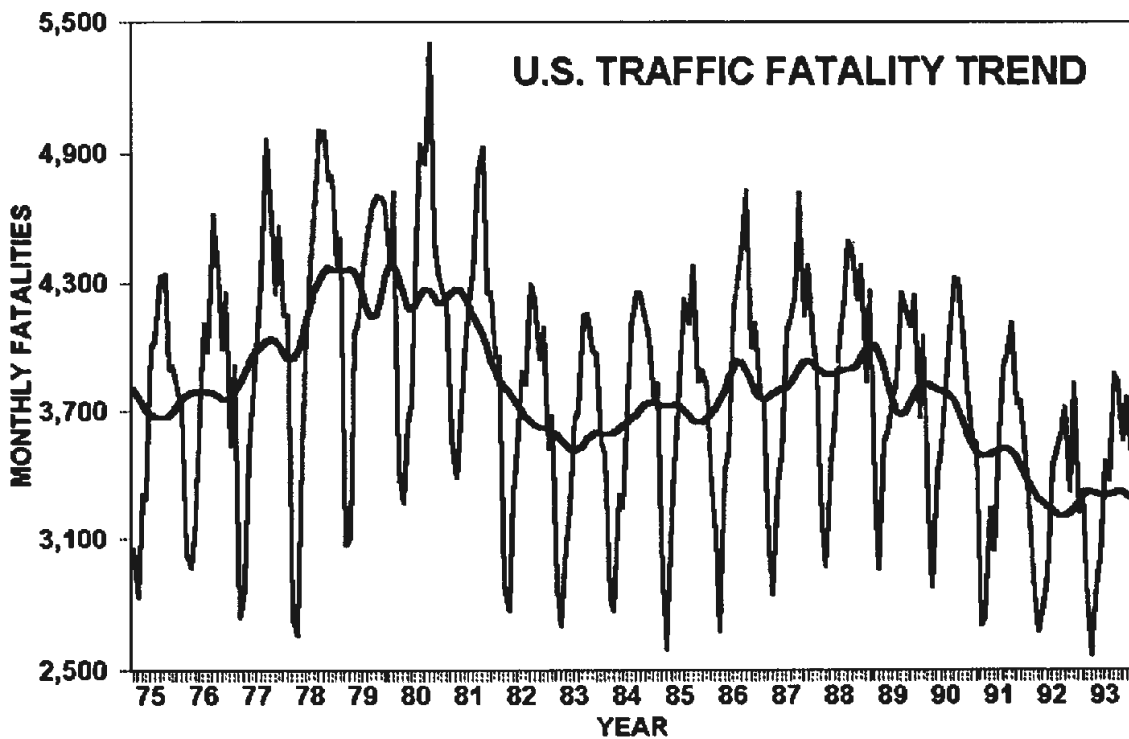
National Highway
Traffic Safety
Administration

DOT HS 808 090

March 1994

NHTSA Technical Report

1993 Traffic Crashes, Injuries, and Fatalities - Preliminary Report



HE
5614.2
.C47
1994

1. Report No. DOT HS 808 090		2. Government Accession No.		3. Recipient's Catalog No.	
4. Title and Subtitle 1993 Traffic Crashes, Injuries, and Fatalities Preliminary Report				5. Report Date March 1994	
				6. Performing Organization Code	
				8. Performing Organization Report No.	
7. Author(s) Ezio C. Cerrelli				10. Work Unit No. (TRAIS)	
9. Performing Organization Name and Address Mathematical Analysis Division National Center for Statistics and Analysis 400 7th Street, SW Washington, D.C.				11. Contract or Grant No.	
				13. Type of Report and Period Covered NHTSA Technical Report	
12. Sponsoring Agency Name and Address				14. Sponsoring Agency Code	
15. Supplementary Notes					
16. Abstract <p>This report contains preliminary estimates of the number of police reported crashes, injuries, and fatalities for 1993. Trend data are presented for these estimates. The trend on fatality rate per 100 million vehicle miles of travel is also included.</p> <p>The national estimates included in the report are quite extensive and cover a wide range of frequently used crash classifiers. Some of the estimates are compared to the corresponding values available for 1992.</p> <p>The results are presented in tabular and graphical form and are summarized in a set of summary findings.</p>					
17. Key Words Crashes, Injuries, Fatalities, Drivers, Vehicles, Trends, Fatality Rate			18. Distribution Statement Document is available to the public through the National Technical Information Service Springfield, VA 22161		
19. Security Classif. (of this report) Unclassified		20. Security Classif. (of this page) Unclassified		21. No. of Pages 85	22. Price

HE
5614.2
.C47
1994

19360

JUL 1 1995

Table of Contents

	Page
<u>PRELIMINARY REPORT</u>	
INTRODUCTION	1
PRINCIPAL FINDINGS	2
<u>1992-1993 COMPARISONS</u>	
FATALITIES by STATE	7
FATALITIES by NHTSA REGIONS	8
FATALITY REDUCTION by NHTSA REGIONS	9
TIME OF DAY - 1992 TO 1993 COMPARISONS	10
DAY of WEEK - 1992 TO 1993 COMPARISONS	11
TYPE of COLLISION - 1992 TO 1993 COMPARISONS	12
POSTED SPEED LIMIT - 1992 TO 1993 COMPARISONS	13
TYPE of VEHICLE - 1992 TO 1993 COMPARISONS	14
DRIVER AGE - 1992 TO 1993 COMPARISONS	15
DRIVERS - 1992 TO 1993 COMPARISONS	16
PASSENGERS- 1992 TO 1993 COMPARISONS	17
PEDESTRIANS - 1992 TO 1993 COMPARISONS	18
PEDALCYCLISTS - 1992 TO 1993 COMPARISONS	19
ALCOHOL RELATED FATALITIES - 1992 TO 1993 CHANGES	20
<u>TRENDS</u>	
TREND IN TOTAL CRASHES (1988-1993)	23
TREND IN CRASH INJURIES (1988-1993)	24
TREND IN TRAFFIC FATALITIES (1988-1993)	25
TREND IN TRAFFIC FATALITIES (1975-1993)	26
TREND IN TRAFFIC FATALITY RATE (1975-1993)	27
TREND IN TRAVEL (VMT) (1975-1993)	28
<u>1993 ESTIMATES</u>	
TOTAL CRASHES BY MONTH AND DAY OF WEEK	31
INJURIES BY MONTH AND DAY OF WEEK	32
FATALITIES BY MONTH AND DAY OF WEEK	33
TOTAL CRASHES BY HOUR OF DAY AND DAY OF WEEK	34
INJURIES BY HOUR OF DAY AND DAY OF WEEK	35
FATALITIES BY HOUR OF DAY AND DAY OF WEEK	36
TOTAL CRASHES BY TYPE OF COLLISION AND HOUR OF DAY	37
INJURIES BY COLLISION TYPE AND HOUR GROUP	38

1993 PRELIMINARY REPORT

Table of Contents (Cont'd)

FATALITIES BY TYPE OF COLLISION AND HOUR OF DAY	39
FATALITIES BY TYPE OF COLLISION AND LAND USE	40
FATALITIES BY TYPE OF COLLISION AND TYPE OF HIGHWAY	41
TOTAL CRASHES BY TYPE OF COLLISION AND SPEED LIMIT	42
INJURIES BY TYPE OF COLLISION AND SPEED LIMIT	43
FATALITIES BY TYPE OF COLLISION AND SPEED LIMIT	44
DRIVERS IN TOTAL CRASHES, BY AGE AND SEX	45
DRIVERS IN INJURY CRASHES, BY AGE AND SEX	46
DRIVERS IN FATAL CRASHES, BY AGE AND SEX	47
DRIVERS IN TOTAL CRASHES, BY AGE AND COLLISION TYPE	48
DRIVERS IN INJURY CRASHES, BY AGE AND COLLISION TYPE	49
DRIVERS IN FATAL CRASHES, BY AGE AND COLLISION TYPE	50
DRIVERS IN TOTAL CRASHES, BY AGE AND VEHICLE TYPE	51
DRIVERS IN INJURY CRASHES, BY AGE AND VEHICLE TYPE	52
DRIVERS IN FATAL CRASHES, BY AGE AND VEHICLE TYPE	53
VEHICLES IN TOTAL CRASHES, BY TYPE AND COLLISION TYPE	54
VEHICLES IN INJURY CRASHES, BY TYPE AND COLLISION TYPE	55
VEHICLES IN FATAL CRASHES, BY TYPE AND COLLISION TYPE	56
VEHICLES IN TOTAL CRASHES, BY TYPE AND DIRECTION OF IMPACT	57
VEHICLES IN INJURY CRASHES, BY TYPE AND DIRECTION OF IMPACT	58
VEHICLES IN FATAL CRASHES, BY TYPE AND DIRECTION OF IMPACT	59
VEHICLE OCCUPANT INJURIES BY DRIVER AGE AND COLLISION TYPE	60
VEHICLE OCCUPANT FATALITIES BY DRIVER AGE AND COLLISION TYPE	61
VEHICLE OCCUPANT INJURIES BY DRIVER AGE AND VEHICLE TYPE	62
VEHICLE OCCUPANT FATALITIES BY DRIVER AGE AND VEHICLE TYPE	63
VEHICLE OCCUPANT INJURIES BY VEHICLE TYPE AND COLLISION TYPE	64
VEHICLE OCCUPANT FATALITIES BY VEHICLE TYPE AND COLLISION TYPE	65
VEHICLE OCCUPANT INJURIES BY VEHICLE TYPE AND DIRECTION OF IMPACT	66
VEHICLE OCCUPANT FATALITIES BY VEHICLE TYPE AND DIRECTION OF IMPACT	67
VEHICLE OCCUPANT INJURIES, BY DRIVER AGE AND SEX	68
VEHICLE OCCUPANT FATALITIES, BY DRIVER AGE AND SEX	69
TRAFFIC INJURIES BY AGE OF VICTIM AND PERSON TYPE	70
TRAFFIC FATALITIES BY VICTIM'S AGE AND PERSON TYPE	71
TRAFFIC INJURIES BY AGE AND SEX OF VICTIM	72
TRAFFIC FATALITIES BY AGE AND SEX OF VICTIM	73
TRAFFIC INJURIES BY MONTH AND PERSON TYPE	74
TRAFFIC FATALITIES BY MONTH AND PERSON TYPE	75
TRAFFIC INJURIES BY VEHICLE TYPE AND PERSON TYPE	76
TRAFFIC FATALITIES BY VEHICLE TYPE AND PERSON TYPE	77

1993 Traffic Crashes, Injuries and Fatalities - Preliminary Report

by

Ezio C. Cerrelli

**National Highway Traffic Safety
Administration**

Introduction

This report contains preliminary estimates of motor vehicle crashes and resulting injuries and fatalities.

The crash estimates for 1993 are based on all cases reported to the General Estimate System (GES) for the first nine months of 1993 and the cases reported for October, November, and December of 1992. The sampling weights of the 1992 cases have been modified to account for the estimated total change from 1992 to 1993.

FARS and GES are sponsored and managed by the National Center for Statistics and Analysis (NCSA), an office of the National Highway Traffic Safety Administration (NHTSA).

The GES obtains its data from a nationally representative probability sample selected from all police-reported crashes which occur annually. Although the GES file contains fatal, injury, and property damage cases, for the purpose of this report only injury and property damage cases are utilized.

The fatality estimates for 1993 are based on all cases reported to the Fatal Accident Reporting

System (FARS) as of February 1994, and on the preliminary reporting of the total number of traffic fatalities in 1993 by each state. The number of cases on file as of February 1994 are estimated to represent about 90 percent of the final total for the year. The combination of the two sources has been used for a number of years to produce fairly accurate estimates of detailed traffic fatality statistics months before the actual reporting of the cases is completed.

The estimates of fatalities for 1993 represent an extrapolation of the data presently available in the FARS file. Extrapolation factors have been established for each of the twelve months using the expected final monthly fatality counts and the corresponding counts in the FARS file. Past experience has shown that most large estimates, counts of 10,000 or more, tend to be within one percent of the final figure. Smaller estimates are subject to relatively larger estimation errors.

For some data elements like Highway System, Land Use, Speed Limit and Vehicle Type, the reporting is not quite as complete at this early date and the file contains a large number of cases with unknown values. Additional adjustments were required for these data elements, in order to make proper comparisons with previous years' data.

The GES file is based on a sample survey; therefore, all estimates based on this file are subject to sampling and nonsampling errors. Sampling errors represent the probable differences between the results obtained from the sample survey data and those results that would be obtained from a census of the population. Sampling variability should be taken into account when interpreting year-to-year differences. The technical note (DOT HS 807796), which is available from

1993 PRELIMINARY REPORT

NHTSA, provides a complete description of the GES sample design, and estimation of sampling errors.

The GES does not provide estimates for individual states, and NHTSA regions. Only FARS estimates of total fatalities in each state and region are presented in the report.

The report presents a series of estimates on crashes, injuries, and fatalities for 1993. The report contains three major sections. The tables in the first section reflect a comparison of selected 1993 estimates to the corresponding counts reported for 1992. This is followed by a group of charts reflecting various trends in crashes, injuries, and fatalities. The final section is designed to provide a large and detailed set of 1993 estimates derived from the GES and FARS files.

The fatality trend, presented in the report, is based on monthly data from January 1975 through December 1993. These fatality counts have been combined with the travel estimates, over the same period of time, to compute the fatality rate trend. Vehicle Miles of Travel (VMT) data used to calculate the fatality rate were provided by the Federal Highway Administration (FHWA).

The year to year comparisons rely on the redistribution of unknown data for 1993 and the results may change once the completed version of the 1993 GES and FARS files become available.

Principal Findings

Crashes, Injuries, and Fatalities

The number of police-reported traffic crashes is estimated at 6,147,200 for 1993. This represents a 2 percent increase over 1992. The number of injuries that occurred in these crashes is estimated at 3,157,500, a 3 percent increase over 1992.

An estimated 39,850 people lost their lives in traffic crashes during 1993. This represents a 2 percent increase over the 39,235 fatalities reported

during the same period in 1992. The 1993 total is 6 percent lower than in 1983 and 22 percent lower than the count in 1980. The years 1980 and 1983 are used for comparisons because they represent the previous high and low points in the fatality trend during the last eighteen years.

Based on the FHWA's estimated increase of 2.4 percent in vehicle miles of travel, the fatality rate for 1993 is estimated at 1.7 fatalities per 100 million vehicle miles of travel, as compared to 1.8 for 1992, 2.6 for 1983, and 3.3 for 1980.

A time series analysis of the preliminary fatality estimates for 1993 shows a steady level trend during the entire year. (Page 25). Over a longer period of time, the fatality trend shows a rise in annual fatalities, about 4,500, between 1983 and 1988. A reversal in the fatality trend has resulted in the reduction of about 7,900 annual fatalities between 1988 and 1992. The fatality rate per 100 million vehicle miles of travel, based on the ratio of the monthly trend values of fatalities and travel, has continued to decline at a steady rate, from the 3.5 level at the beginning of 1975 to about 1.7 by the end of 1993.

The number of pedestrian fatalities did not change from 1992, but decreased by 21 percent from 1983, and by 34 percent from 1980. Pedalcyclist fatalities increased by 10 percent from 1992 but show a 16 percent decrease from 1980. Fatalities in single vehicle crashes decreased by 1 percent and those in multi-vehicle crashes increased by 4 percent from 1992.

Location

The number of crashes occurring on roads with a posted speed limit below 55 mph increased by 2 percent, roads posted at 55 mph show an increase of 3 percent, and those with a posted speed above 55 mph experienced a 2 percent decrease.

Crash injuries increased by 4 percent on roads with a posted speed below 55 mph, and decreased by 2 percent on those posted at 55 mph. Roads

1993 PRELIMINARY REPORT

posted at higher speeds show a reduction of 1 percent.

Fatalities increased by about 3 percent over 1992 in the rural areas and decreased by about 1 percent in urban areas. Fatalities on the interstate system increased by 4 percent, and by 9 percent on the U.S. routes that are not part of the interstate system. The combination of state, county, and local streets experienced an average decrease of 1 percent. All roads with a posted speed limit below 55 mph had a 1 percent average decrease in fatalities while roads with a posted limit of 55 mph experienced a 3 percent increase. The increase on those highway sections which had a posted speed limit above 55 mph was 7 percent.

Drivers

An estimated 10,779,400 drivers were involved in police-reported crashes in 1993, an increase of 2 percent from 1992. About 1,990,550 drivers suffered some type of injury and an additional 23,160 were fatally injured.

The overall number of drivers involved in fatal crashes increased by 2 percent in 1993 from 1992. The increase was 2 percent for male and 3 percent for female drivers. Between 1980 and 1993, the number of male drivers in fatal crashes has decreased by 23 percent while the female counterpart has experienced an increase of 13 percent. There was no change in the number of drivers of motorcycles involved in fatal crashes, while the increase for drivers of passenger cars was 1 percent. The number of drivers involved in fatal crashes increased by 3 percent for light trucks and vans, while increasing by 7 percent for medium and heavy trucks.

The number of driver fatalities increased by 3 percent overall, with males showing a 2 percent increase and females a 4 percent increase. For drivers over 65 years of age, the number of fatalities increased by 4 percent, while the drivers in the younger groups had an average increase of 2 percent.

Passengers

The number of passengers injured in traffic crashes is estimated at 1,003,150, a 3 percent increase over 1992. The number of passengers that died in motor vehicle crashes is estimated at 10,260, almost the same as in 1992. Occupant fatalities, drivers and passengers combined, increased by 1 percent in passenger cars and motorcycles. The increase was 5 percent for light trucks and vans, and 6 percent for medium and heavy trucks.

Nonoccupants

About 101,000 pedestrians were injured in crashes during 1993, a 2 percent increase from the previous year. The number of pedestrians killed in 1993 was 5,635, about the same as in 1992. Since 1980, pedestrian fatalities have decreased by 31 percent, the decrease being similar for both males and females. The number of pedalcyclists injured in 1993 is estimated at 62,800, showing no change from 1992. The estimated 795 pedalcyclist fatalities for 1993 is 10 percent higher than in 1992. Since 1980 pedalcyclist fatalities have decreased by 16 percent.

1992-1993 COMPARISONS

MTA LIBRARY

1993 PRELIMINARY REPORT

FATALITIES BY STATE							
STATE	TOTALS				% CHANGE		
	1993	1992	1991	1990	90 TO 93	92 TO 93	91 TO 93
ALABAMA	1,010	1,031	930	940	-1%	11%	-2%
ALASKA	117	108	150	88	70%	-28%	8%
ARIZONA	800	809	675	947	-29%	20%	-1%
ARKANSAS	583	588	557	588	-5%	6%	-1%
CALIFORNIA	4,180	4,189	4,573	5,496	-17%	-8%	-0%
COLORADO	559	522	646	709	-9%	-19%	7%
CONNECTICUT	345	296	438	575	-24%	-32%	17%
DELAWARE	113	140	110	153	-28%	27%	-19%
DIST. OF COLUMBIA	55	50	66	41	61%	-24%	10%
FLORIDA	2,663	2,427	2,686	2,825	-5%	-10%	10%
GEORGIA	1,364	1,315	1,296	1,508	-14%	1%	4%
HAWAII	133	129	141	186	-24%	-9%	3%
IDAHO	232	243	263	331	-21%	-8%	-5%
ILLINOIS	1,386	1,384	1,526	1,975	-23%	-9%	0%
INDIANA	894	901	1,016	1,166	-13%	-11%	-1%
IOWA	455	437	514	626	-18%	-15%	4%
KANSAS	425	387	411	595	-31%	-6%	10%
KENTUCKY	868	815	778	820	-5%	5%	7%
LOUISIANA	863	883	933	1,219	-23%	-5%	-2%
MAINE	187	214	224	265	-15%	-4%	-13%
MARYLAND	667	659	656	756	-13%	0%	1%
MASSACHUSETTS	465	485	651	881	-26%	-25%	-4%
MICHIGAN	1,375	1,298	1,314	1,750	-25%	-1%	6%
MINNESOTA	535	581	555	848	-35%	5%	-8%
MISSISSIPPI	791	766	715	695	3%	7%	3%
MISSOURI	938	985	911	1,175	-22%	8%	-5%
MONTANA	195	192	286	325	-12%	-33%	2%
NEBRASKA	252	269	255	396	-36%	5%	-6%
NEVADA	261	251	253	346	-27%	-1%	4%
NEW HAMPSHIRE	124	122	191	194	-2%	-36%	2%
NEW JERSEY	787	764	932	1,120	-17%	-18%	3%
NEW MEXICO	433	460	531	606	-12%	-13%	-6%
NEW YORK	1,697	1,814	2,077	2,610	-20%	-13%	-6%
NORTH CAROLINA	1,375	1,265	1,234	1,503	-18%	3%	9%
NORTH DAKOTA	89	88	116	151	-23%	-24%	1%
OHIO	1,460	1,439	1,582	2,033	-22%	-9%	1%
OKLAHOMA	675	613	848	959	-12%	-28%	10%
OREGON	518	467	550	646	-15%	-15%	11%
PENNSYLVANIA	1,520	1,545	1,721	2,089	-18%	-10%	-2%
RHODE ISLAND	75	79	100	129	-22%	-21%	-5%
SOUTH CAROLINA	848	807	844	852	-1%	-4%	5%
SOUTH DAKOTA	140	161	175	228	-23%	-8%	-13%
TENNESSEE	1,171	1,153	1,037	1,153	-10%	11%	2%
TEXAS	3,026	3,059	3,823	4,366	-12%	-20%	-1%
UTAH	303	269	283	334	-15%	-5%	13%
VERMONT	114	96	94	137	-31%	2%	19%
VIRGINIA	870	839	901	1,045	-14%	-7%	4%
WASHINGTON	657	651	698	971	-28%	-7%	1%
WEST VIRGINIA	427	420	425	523	-19%	-1%	2%
WISCONSIN	710	652	725	972	-25%	-10%	9%
WYOMING	120	118	173	245	-29%	-32%	2%
U.S. TOTAL	39,850	39,235	42,589	51,091	-17%	-8%	2%

1993 PRELIMINARY REPORT

TRAFFIC FATALITIES BY NHTSA REGIONS							
REGION	TOTALS				PERCENT_CHANGE		
	1993	1992	1983	1980	80 TO 83	83 TO 92	92 TO 93
REGION 1	1,310	1,292	1,698	2,181	-22%	-24%	1%
REGION 2	2,484	2,578	3,009	3,730	-19%	-14%	-4%
REGION 3	3,652	3,653	3,879	4,607	-16%	-6%	0%
REGION 4	10,090	9,579	9,520	10,296	-8%	1%	5%
REGION 5	6,360	6,255	6,718	8,744	-23%	-7%	2%
REGION 6	5,580	5,603	6,692	7,738	-14%	-16%	-0%
REGION 7	2,070	2,078	2,091	2,792	-25%	-1%	-0%
REGION 8	1,406	1,350	1,679	1,992	-16%	-20%	4%
REGION 9	5,374	5,378	5,642	6,975	-19%	-5%	-0%
REGION 10	1,524	1,469	1,661	2,036	-18%	-12%	4%
TOTAL	39,850	39,235	42,589	51,091	-17%	-8%	2%

1993 PRELIMINARY REPORT

TIME OF DAY - 1992 TO 1993 COMPARISONS									
TIME OF DAY	CRASHES			INJURIES			FATALITIES		
	YEAR		% CHANGE	YEAR		% CHANGE	YEAR		% CHANGE
	1992	1993		1992	1993		1992	1993	
12 TO 3 AM	335,880	336,930	0%	184,650	192,000	4%	5,567	5,650	1%
3 TO 6 AM	167,580	183,470	9%	88,520	91,170	3%	2,882	2,995	4%
6 TO 9 AM	684,840	711,950	4%	309,360	325,380	5%	3,287	3,470	6%
9 AM TO NOON	792,620	802,500	1%	379,220	373,740	-1%	3,461	3,885	12%
NOON TO 3 PM	1,109,790	1,147,000	3%	566,920	581,210	3%	5,003	5,035	1%
3 TO 6 PM	1,468,860	1,504,820	2%	726,720	753,800	4%	6,418	6,475	1%
6 TO 9 PM	870,750	898,300	3%	488,060	507,680	4%	6,500	6,410	-1%
9 PM TO 12 AM	569,680	562,230	-1%	326,150	332,520	2%	6,117	5,930	-3%
TOTAL	6,000,000	6,147,200	2%	3,069,600	3,157,500	3%	39,235	39,850	2%

DAY of WEEK - 1992 TO 1993 COMPARISONS									
DAY of WEEK	CRASHES			INJURIES			FATALITIES		
	YEAR		% CHANGE	YEAR		% CHANGE	YEAR		% CHANGE
	1992	1993		1992	1993		1992	1993	
SUNDAY	634,880	667,480	-0%	366,360	396,450	8%	6,384	6,408	0%
MONDAY	827,640	876,750	-2%	395,500	426,710	8%	4,467	4,766	7%
TUESDAY	871,350	858,920	4%	419,880	406,650	-3%	4,443	4,565	3%
WEDNESDAY	873,480	898,700	3%	411,470	433,750	5%	4,743	4,685	-1%
THURSDAY	910,500	927,750	2%	454,840	449,640	-1%	5,158	5,148	0%
FRIDAY	1,034,500	1,062,450	-0%	536,180	553,620	3%	6,336	6,603	+4%
SATURDAY	847,650	855,150	2%	485,370	490,680	1%	7,704	7,675	0%
TOTAL	6,000,000	6,147,200	1%	3,069,600	3,157,500	3%	39,235	39,850	2%

1993 PRELIMINARY REPORT

TYPE of COLLISION - 1992 TO 1993 COMPARISONS									
TYPE of COLLISION	CRASHES			INJURIES			FATALITIES		
	YEAR		% CHANGE	YEAR		% CHANGE	YEAR		% CHANGE
	1992	1993		1992	1993		1992	1993	
PEDESTRIAN	90,270	98,470	9%	96,950	103,140	6%	5,644	5,634	0%
PEDALCYCLIST	70,360	71,020	1%	65,460	65,470	0%	722	795	+10%
OTHER SINGLE VEHICLE	1,702,040	1,745,190	3%	629,150	642,790	2%	15,952	15,837	-1%
ANGLE	2,174,500	2,257,980	4%	1,209,280	1,278,930	6%	7,467	7,550	1%
HEAD ON	99,300	97,060	-2%	114,840	104,780	-9%	6,493	6,983	8%
REAR END	1,501,470	1,554,260	4%	861,500	872,930	1%	1,698	1,782	5%
SIDESWIPE	297,020	266,720	-10%	68,530	64,740	-6%	576	578	0%
OTHER	65,040	56,500	-13%	24,890	24,720	-1%	683	691	1%
TOTAL	6,000,000	6,147,200	2%	3,069,600	3,157,500	3%	39,235	39,200	2%

POSTED SPEED LIMIT - 1992 TO 1993 COMPARISONS									
POSTED SPEED	CRASHES			INJURIES			FATALITIES		
	YEAR		% CHANGE	YEAR		% CHANGE	YEAR		% CHANGE
	1992	1993		1992	1993		1992	1993	
25 & UNDER MPH	1,229,210	1,303,320	6%	445,480	480,310	8%	2,064	1,950	-6%
30 & 35 MPH	1,999,900	2,041,300	2%	1,080,730	1,131,200	5%	7,327	7,360	0%
40 & 45 MPH	1,275,930	1,259,380	-1%	734,140	735,380	0%	7,109	7,035	-1%
50 MPH	226,430	242,120	7%	116,330	128,000	10%	2,153	2,205	2%
55 MPH	1,141,330	1,176,500	3%	633,780	624,100	-2%	18,142	18,700	3%
OVER 55 MPH	127,200	124,580	-2%	59,140	58,510	-1%	2,440	2,600	7%
TOTAL	6,000,000	6,147,200	2%	3,069,600	3,157,500	3%	39,235	39,850	2%

1993 PRELIMINARY REPORT

TYPE of VEHICLE - 1992 TO 1993 COMPARISONS									
TYPE of VEHICLE	VEHICLES INVOLVED			OCCUPANT INJURIES			OCCUPANT FATALITIES		
	YEAR		% CHANGE	YEAR		% CHANGE	YEAR		% CHANGE
	1992	1993		1992	1993		1992	1993	
PASS. CARS (TOT)	7,547,000	7,563,600	0%	2,231,700	2,293,420	3%	21,365	21,490	1%
LIGHT TRUCK	2,487,700	2,650,600	7%	544,670	579,650	6%	8,083	8,455	5%
MEDIUM & HEAVY TRUCK	379,050	394,300	4%	33,770	37,610	11%	584	620	6%
MOTORCYCLE	75,700	73,600	-3%	65,100	60,020	-6%	2,394	2,415	1%
BUS	49,950	52,000	4%	20,140	15,280	-24%	28	20	-29%
OTHER TYPE	48,400	45,300	-6%	12,420	7,720	-38%	415	420	1%
TOTAL	10,587,800	10,779,400	2%	2,907,800	2,993,700	3%	32,869	33,420	2%

DRIVER AGE - 1992 TO 1993 COMPARISONS

DRIVER AGE	DRIVERS INVOLVED			OCCUPANT INJURIES			OCCUPANT FATALITIES		
	YEAR		% CHANGE	YEAR		% CHANGE	YEAR		% CHANGE
	1992	1993		1992	1993		1992	1993	
10-15 YRS	45,150	60,150	33%	22,220	25,000	13	318	365	15%
16-20 YRS	1,805,940	1,782,950	-1%	547,150	547,860	0%	5,358	5,515	3%
21-24 YRS	1,349,190	1,429,430	6%	363,920	389,640	7%	4,322	4,315	0%
25-34 YRS	2,691,220	2,731,460	1%	765,850	774,140	1%	7,840	7,695	-2%
35-44 YRS	1,969,520	2,051,530	4%	522,880	555,190	6%	5,081	5,220	3%
45-54 YRS	1,223,660	1,205,250	-2	301,190	310,530	3%	3,029	3,170	5%
55-64 YRS	707,770	714,130	1%	168,460	184,270	9%	2,263	2,305	2%
65-69 YRS	273,060	304,600	12%	80,160	78,440	-2%	1,137	1,135	0%
70-74 YRS	213,070	215,630	1%	60,200	58,960	-2%	1,243	1,170	-6%
75-79 YRS	153,560	153,810	0%	43,260	37,690	-13%	1,060	1,145	8%
80-84 YRS	85,160	85,920	1%	19,470	20,920	7%	812	880	8%
85 & OVER	70,500	44,540	-37%	13,040	11,060	-15%	406	505	2%
TOTAL	10,587,800	10,779,400	2%	2,907,800	2,993,700	3%	32,869	33,420	2%

1993 PRELIMINARY REPORT

DRIVERS - 1992 TO 1993 COMPARISONS						
AGE GROUP	INJURIES			FATALITIES		
	YEAR		% CHANGE	YEAR		% CHANGE
	1992	1993		1992	1993	
10 TO 15 YEARS	11,810	12,668	7%	168	189	13%
16 TO 20 YEARS	332,320	331,893	0%	3,063	3,165	3%
21 TO 24 YEARS	249,910	267,836	7%	2,800	2,841	1%
25 TO 34 YEARS	517,110	510,716	-1%	5,420	5,344	-1%
35 TO 44 YEARS	351,850	372,665	6%	3,722	3,883	4%
45 TO 54 YEARS	209,760	219,770	5%	2,325	2,468	6%
55 TO 64 YEARS	118,010	127,050	8%	1,690	1,743	3%
65 TO 69 YEARS	51,510	56,620	10%	817	796	-3%
70 TO 74 YEARS	39,860	40,300	1%	882	815	-8%
75 TO 79 YEARS	29,590	26,086	-12%	769	840	9%
80 TO 84 YEARS	13,890	16,192	17%	607	673	11%
85 & OVER	9,840	8,754	-11%	320	403	26%
TOTAL	1,935,460	1,990,550	3%	22,583	23,160	3%

PASSENGERS- 1992 TO 1993 COMPARISONS						
AGE GROUP	INJURIES			FATALITIES		
	YEAR		% CHANGE	YEAR		% CHANGE
	1992	1993		1992	1993	
4 & UNDER	62,900	73,090	16%	586	597	-3%
5 TO 9 YEARS	80,000	79,345	-1%	440	426	-0%
10 TO 15 YEARS	136,170	131,000	-4%	801	772	-2%
16 TO 20 YEARS	190,970	201,781	6%	1,925	1,938	-13%
21 TO 24 YEARS	93,770	98,871	5%	1,170	1,193	-2%
25 TO 34 YEARS	149,530	153,427	3%	1,613	1,518	-6%
35 TO 44 YEARS	87,360	96,300	10%	966	983	1%
45 TO 54 YEARS	56,320	55,925	-1%	596	590	-4%
55 TO 64 YEARS	45,820	50,415	10%	520	546	-3%
65 TO 69 YEARS	21,380	19,015	-11%	365	358	-1%
70 TO 74 YEARS	20,320	15,646	-23%	390	380	8%
75 TO 79 YEARS	14,190	15,931	12%	384	439	9%
80 TO 84 YEARS	7,870	7,946	1%	312	270	7%
85 & OVER	5,740	4,458	-22%	218	250	-13%
TOTAL	972,340	1,003,150	3%	10,286	10,260	0%

1993 PRELIMINARY REPORT

PEDESTRIANS - 1992 TO 1993 COMPARISONS						
AGE GROUP	INJURIES			FATALITIES		
	YEAR		% CHANGE	YEAR		% CHANGE
	1992	1993		1992	1993	
4 & UNDER	5,560	5,827	5%	242	247	2%
5 TO 9 YEARS	13,160	11,245	-15%	310	307	-1%
10 TO 15 YEARS	15,930	16,540	4%	227	275	21%
16 TO 20 YEARS	8,730	8,380	-4%	341	288	-16%
21 TO 24 YEARS	7,690	7,656	0%	310	302	-3%
25 TO 34 YEARS	15,290	16,874	10%	920	994	8%
35 TO 44 YEARS	13,180	12,921	-2%	886	923	4%
45 TO 54 YEARS	7,600	7,780	2%	614	577	-6%
55 TO 64 YEARS	4,040	4,942	22%	498	489	-2%
65 TO 69 YEARS	1,830	1,546	-16%	281	248	-12%
70 TO 74 YEARS	2,700	2,072	-23%	270	241	-11%
75 TO 79 YEARS	1,340	2,905	117%	282	280	-1%
80 TO 84 YEARS	1,070	1,531	43%	261	261	0%
85 & OVER	980	781	-20%	202	203	0%
TOTAL	99,100	101,000	2%	5,644	5,635	0%

PEDALCYCLISTS - 1992 TO 1993 COMPARISONS						
AGE GROUP	INJURIES			FATALITIES		
	YEAR		% CHANGE	YEAR		% CHANGE
	1992	1993		1992	1993	
4 & UNDER	900	223	-75%	14	16	14%
5 TO 9 YEARS	8,750	8,750	0%	112	107	-4%
10 TO 15 YEARS	19,600	20,052	2%	159	169	6%
16 TO 20 YEARS	7,490	7,106	-5%	53	69	17%
21 TO 24 YEARS	7,260	6,827	-6%	33	44	33%
25 TO 34 YEARS	8,740	9,013	3%	111	144	30%
35 TO 44 YEARS	4,780	5,534	16%	86	101	17%
45 TO 54 YEARS	1,860	3,125	68%	59	55	-7%
55 TO 64 YEARS	2,010	1,333	-34%	49	42	-14%
65 TO 69 YEARS	740	209	-72%	17	18	6%
70 TO 74 YEARS	190	172	-9%	12	14	17%
75 TO 79 YEARS	240	228	-5%	6	6	0%
80 TO 84 YEARS	130	211	62%	7	6	-14%
85 & OVER	10	17	70%	4	4	0%
TOTAL	62,700	62,800	0%	722	795	10%

ALCOHOL RELATED FATALITIES

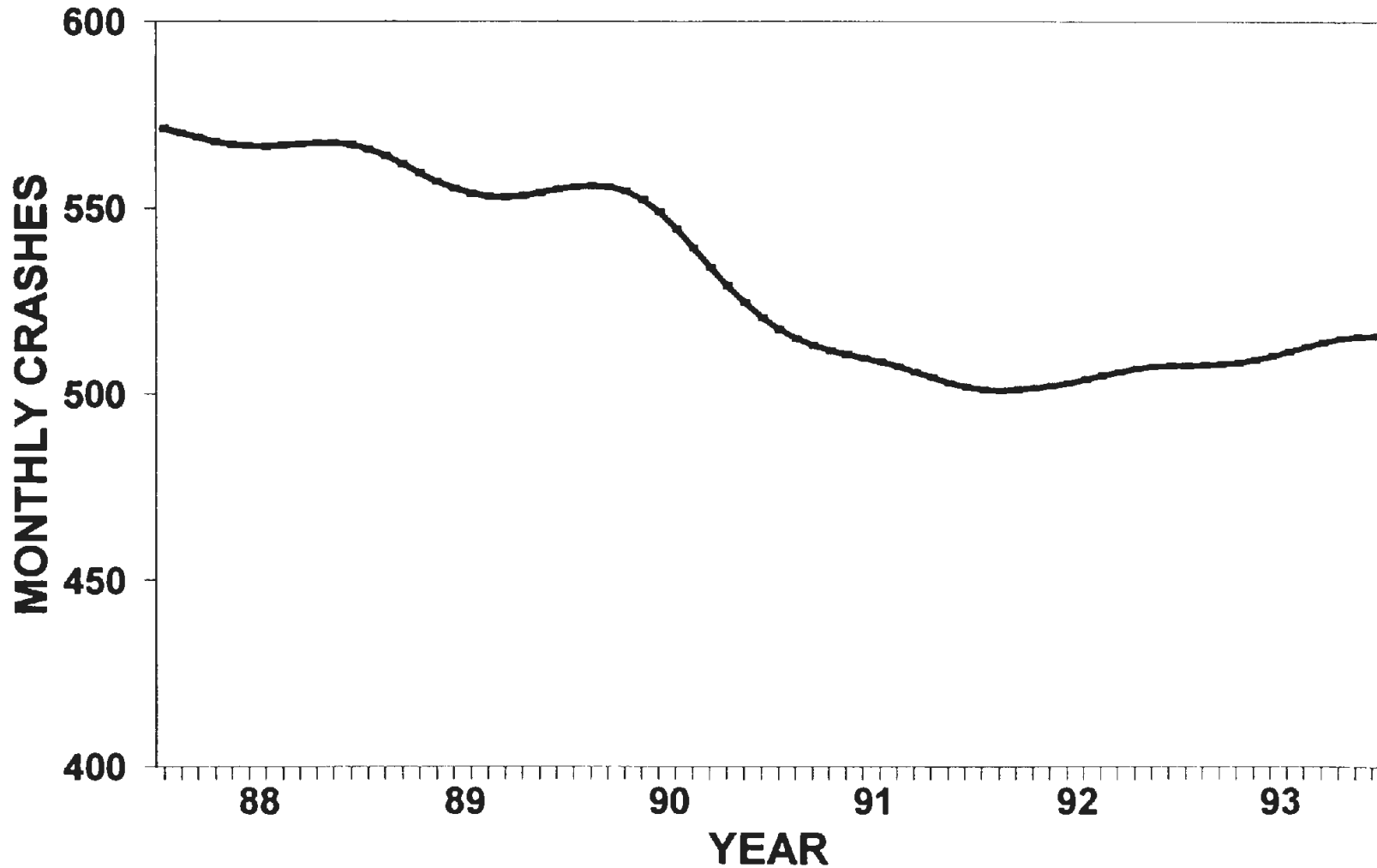
1992 TO 1993 CHANGES

	FATALITIES	% CHANGE
ZERO B.A.C.	22,325	+4%
.01 - .09 B.A.C.	3,515	-2%
.10 & OVER B.A.C.	14,010	-1%

TRENDS

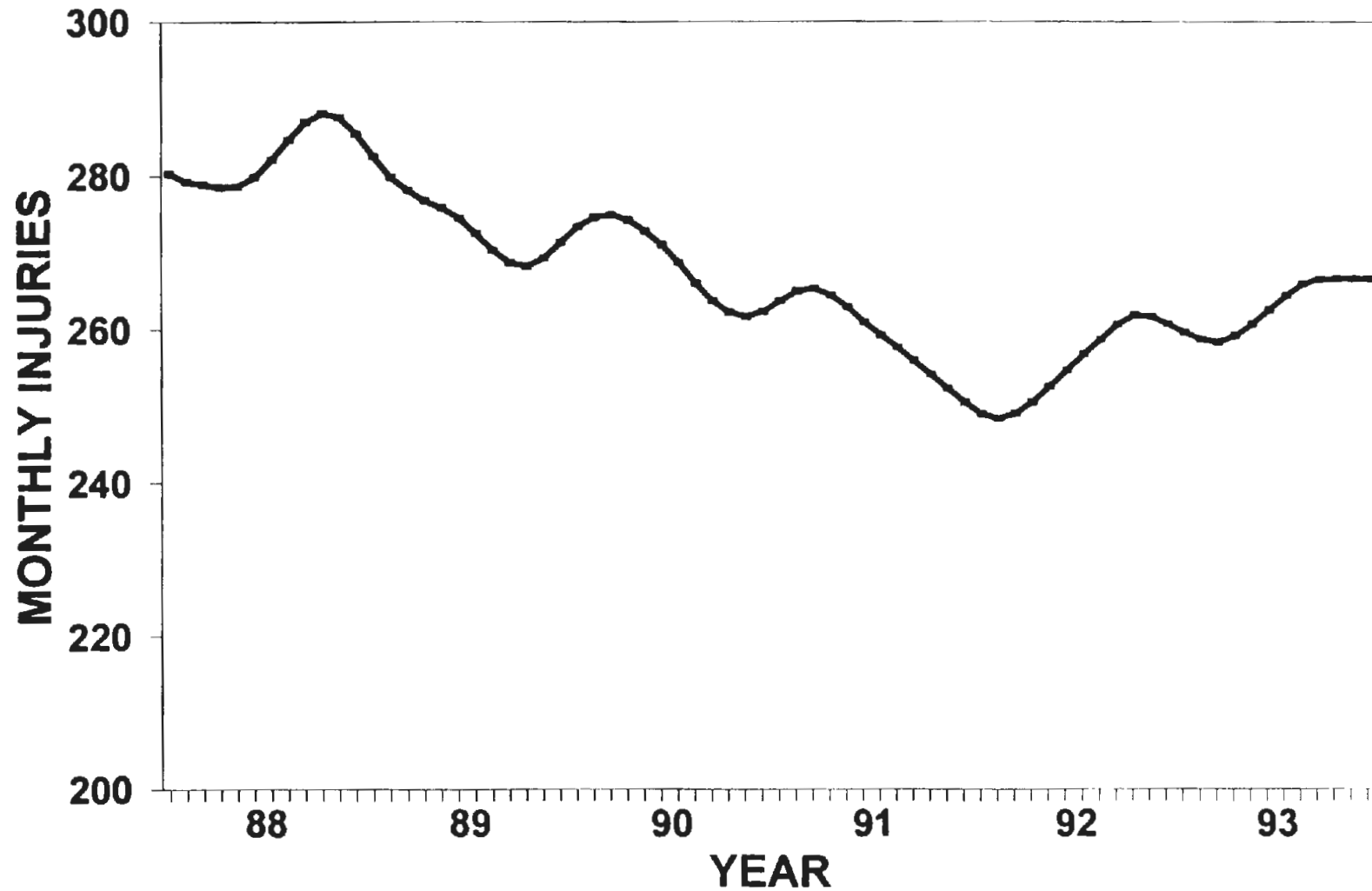
TREND IN TOTAL CRASHES (GES)

1988 - 1993 (in Thousands)



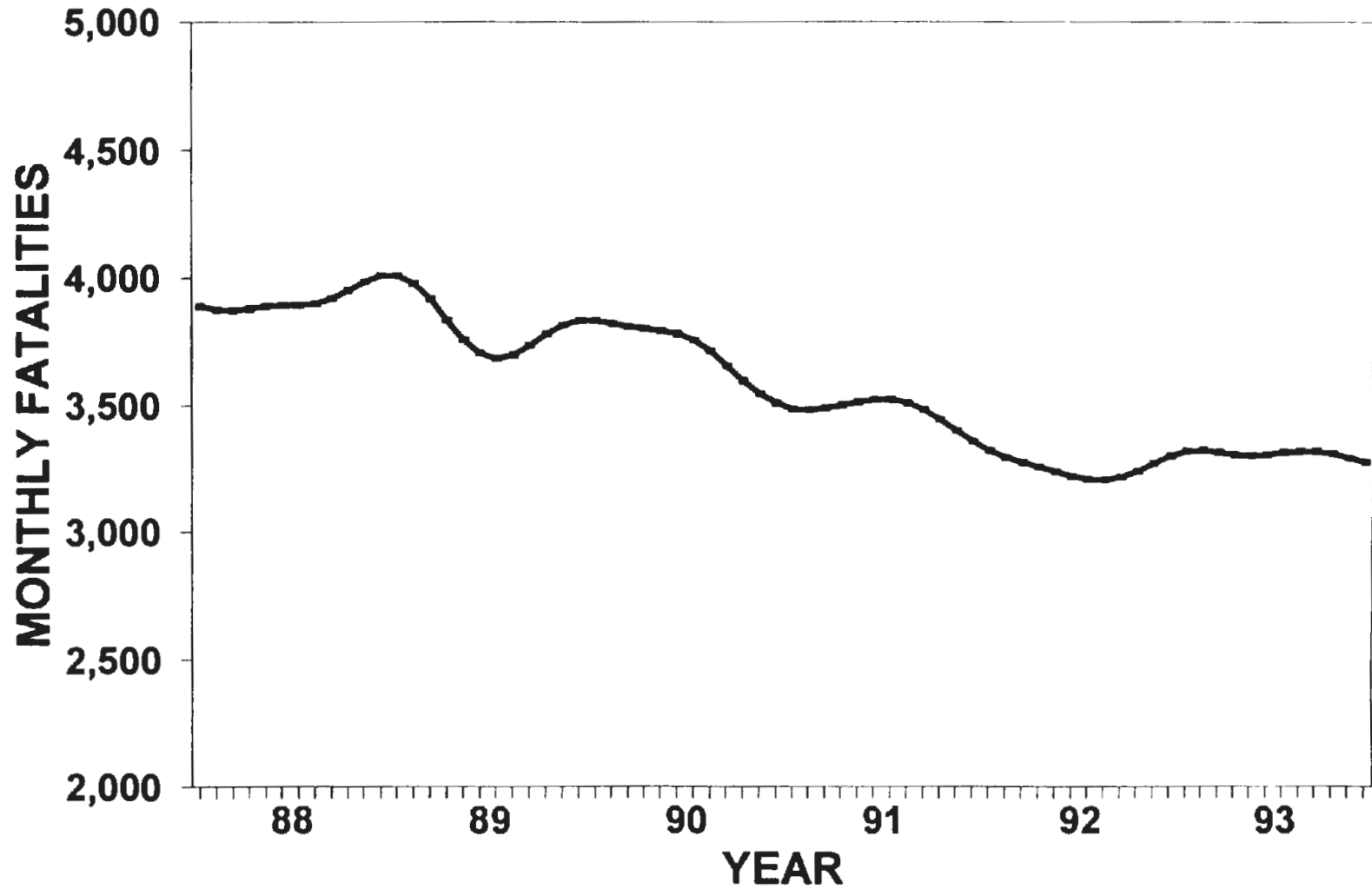
TREND IN INJURIES (GES)

1988 - 1993 (in Thousands)



TRAFFIC FATALITY TREND

1988 - 1993

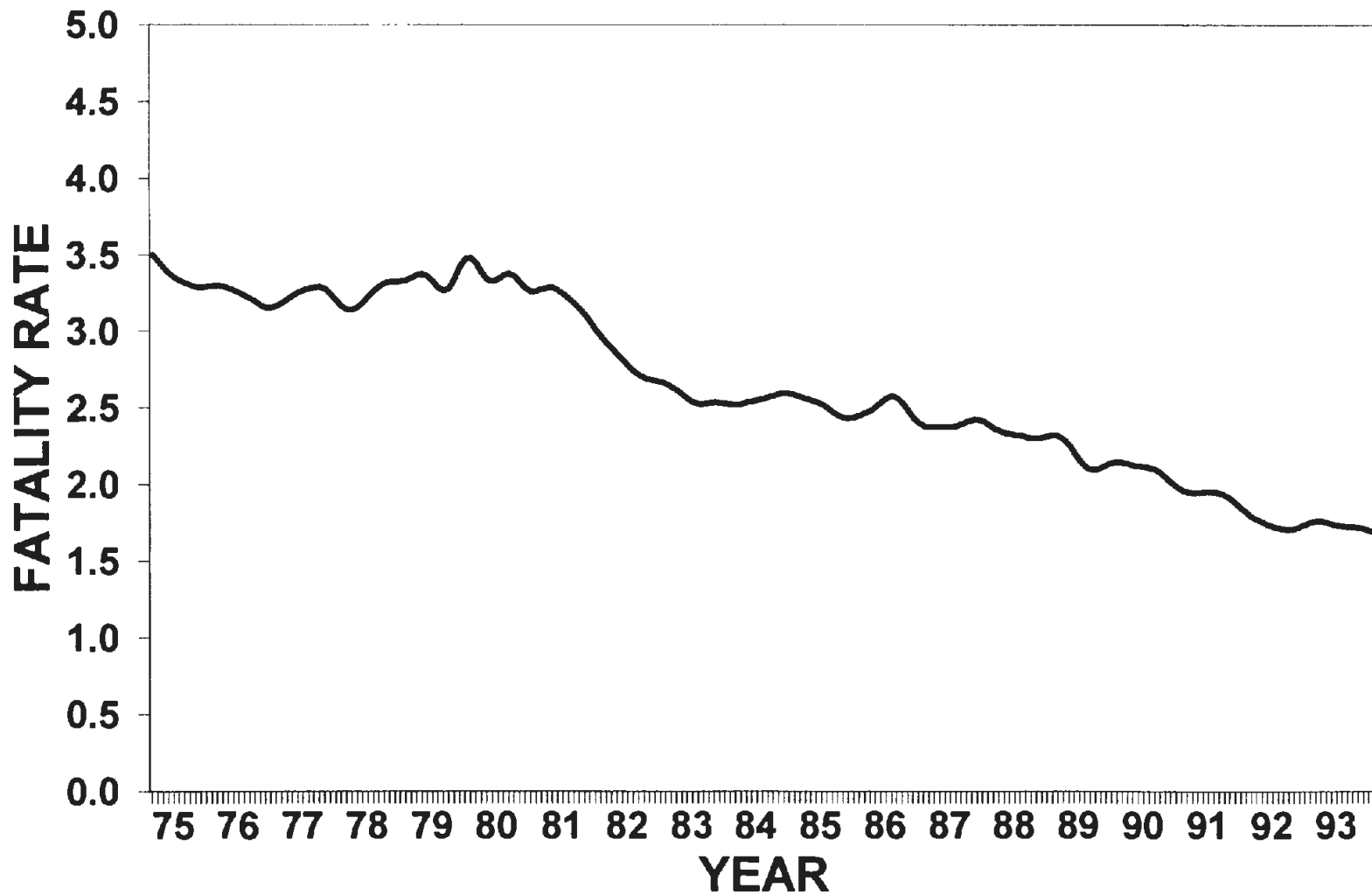


TRAFFIC FATALITY TREND 1975 - 1993

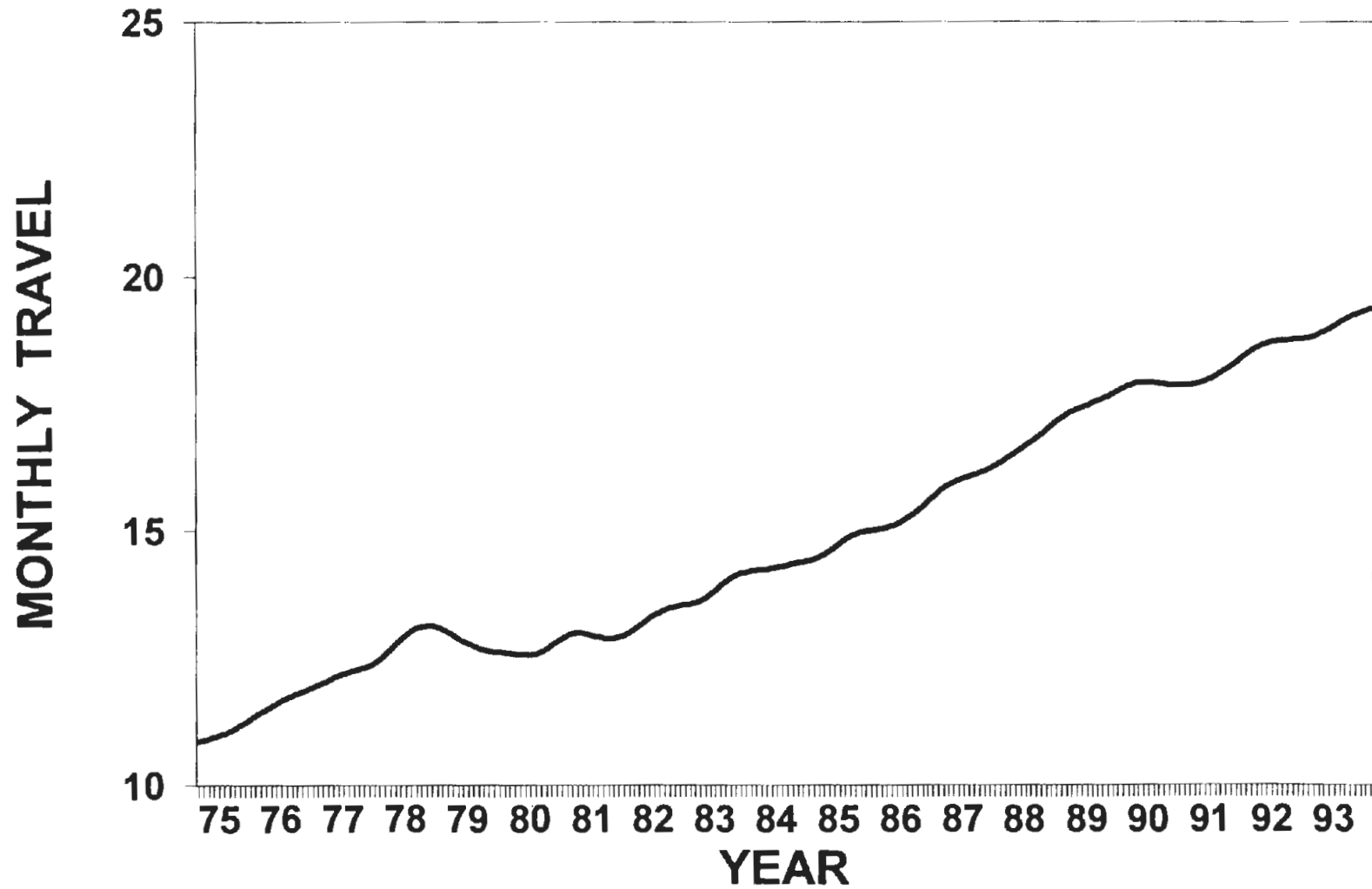


FATALITY RATE TREND

1975 - 1993



TRAVEL (VMT) TREND 1975 - 1993



1993 ESTIMATES

1993 PRELIMINARY REPORT

TOTAL CRASHES BY MONTH AND DAY OF WEEK								
MONTH	DAY OF WEEK							TOTAL
	SUNDAY	MONDAY	TUESDAY	WEDNESDAY	THURSDAY	FRIDAY	SATURDAY	
JANUARY	69,515	68,259	65,281	67,107	70,416	93,859	74,313	508,750
FEBRUARY	53,660	64,180	71,750	74,613	73,047	83,100	66,050	486,400
MARCH	43,300	74,768	73,977	85,611	67,823	84,916	64,505	494,900
APRIL	48,815	61,323	52,099	67,193	88,775	91,692	62,453	472,350
MAY	72,225	83,643	67,984	65,600	62,993	76,988	816671	511,100
JUNE	44,477	66,433	78,642	76,359	58,362	84,336	69,291	477,900
JULY	53,625	58,142	61,135	65,707	84,283	93,433	76,225	492,550
AUGUST	59,717	80,384	81,632	60,129	59,689	83,479	60,270	485,300
SEPTEMBER	47,085	69,300	68,553	85,991	94,993	83,217	71,461	520,600
OCTOBER	56,840	68,643	70,061	62,900	101,053	123,310	93,493	576,300
NOVEMBER	69,645	99,217	80,125	89,210	75,019	79,160	73,574	565,950
DECEMBER	48,576	82,458	87,681	98,280	91,297	84,960	61,848	555,100
TOTAL	667,480	876,750	858,920	898,700	927,750	1,062,450	855,150	6,147,200

1993 PRELIMINARY REPORT

INJURIES BY MONTH AND DAY OF WEEK								
MONTH	DAY OF WEEK							
	SUNDAY	MONDAY	TUESDAY	WEDNESDAY	THURSDAY	FRIDAY	SATURDAY	TOTAL
JANUARY	42,225	35,656	28,688	28,770	30,620	46,328	38,013	250,300
FEBRUARY	30,745	27,135	27,566	32,349	35,752	35,210	39,243	228,000
MARCH	23,237	33,484	32,324	40,948	29,884	36,802	32,371	229,0500
APRIL	29,148	33,429	21,842	30,062	37,664	50,371	37,864	240,380
MAY	44,292	47,686	34,880	35,445	35,758	42,791	50,458	291,310
JUNE	31,965	33,329	41,016	40,173	29,128	46,578	40,691	262,880
JULY	34,124	34,201	34,671	35,635	39,287	54,920	43,032	275,870
AUGUST	42,055	42,220	41,586	34,604	36,675	45,140	33,870	276,150
SEPTEMBER	27,666	30,334	33,326	44,854	45,564	47,366	47,890	277,000
OCTOBER	30,537	33,661	32,683	28,752	49,945	66,340	54,252	296,170
NOVEMBER	36,971	44,095	36,698	42,568	37,811	39,325	40,802	278,270
DECEMBER	23,485	31,480	41,370	39,590	41,552	42,449	32,194	252,120
TOTAL	396,450	426,710	406,650	433,750	449,640	553,620	490,680	3,157,500

1993 PRELIMINARY REPORT

FATALITIES BY MONTH AND DAY OF WEEK								
MONTH	DAY OF WEEK							
	SUNDAY	MONDAY	TUESDAY	WEDNESDAY	THURSDAY	FRIDAY	SATURDAY	TOTAL
JANUARY	462	326	285	290	351	500	576	2,790
FEBRUARY	379	343	311	280	341	421	490	2,565
MARCH	391	384	458	425	349	404	479	2,890
APRIL	515	346	316	276	438	561	558	3,010
MAY	677	416	381	318	385	533	750	3,460
JUNE	523	373	431	448	417	507	676	3,375
JULY	607	415	397	399	523	671	868	3,880
AUGUST	720	516	502	432	445	582	638	3,835
SEPTEMBER	599	403	372	478	511	520	672	3,555
OCTOBER	684	414	372	400	386	660	849	3,765
NOVEMBER	463	444	443	475	477	580	593	3,475
DECEMBER	388	386	297	464	525	664	526	3,250
TOTAL	6,408	4,766	4,565	4,685	5,148	6,603	7,675	39,850

1993 PRELIMINARY REPORT

TOTAL CRASHES BY HOUR OF DAY AND DAY OF WEEK								
HOUR OF DAY	DAY OF WEEK							TOTAL
	SUNDAY	MONDAY	TUESDAY	WEDNESDAY	THURSDAY	FRIDAY	SATURDAY	
12 TO 3 AM	83,426	28,041	25,160	30,850	34,863	43,500	91,090	336,930
3 TO 6 AM	41,551	17,414	18,185	18,335	22,295	25,809	39,881	183,470
6 TO 9 AM	34,038	119,738	122,023	130,195	126,149	124,673	55,134	711,950
9 AM TO NOON	70,478	125,048	113,482	115,634	124,034	135,816	118,008	802,500
NOON TO 3 PM	128,765	165,559	165,929	163,140	175,005	194,219	154,383	1,147,000
3 TO 6 PM	128,149	239,205	231,461	240,243	236,759	269,263	159,740	1,504,820
6 TO 9 PM	111,960	119,311	120,168	130,056	133,331	152,995	130,479	898,300
9 PM TO 12 AM	69,113	62,434	62,512	70,247	75,314	116,175	106,435	562,230
TOTAL	667,480	876,750	858,920	898,700	927,750	1,062,450	855,150	6,147,200

1993 PRELIMINARY REPORT

INJURIES BY HOUR OF DAY AND DAY OF WEEK								
HOUR OF DAY	DAY OF WEEK							
	SUNDAY	MONDAY	TUESDAY	WEDNESDAY	THURSDAY	FRIDAY	SATURDAY	TOTAL
12 TO 3 AM	34,382	10,698	8,642	12,307	14,134	16,601	32,906	129,670
3 TO 6 AM	16,913	6,110	6,850	6,708	7,948	7,164	16,172	67,865
6 TO 9 AM	12,474	36,077	40,517	39,000	42,837	37,486	19,529	227,920
9 AM TO NOON	21,848	34,641	36,322	35,462	35,810	44,778	40,914	249,775
NOON TO 3 PM	38,697	49,319	54,279	51,804	54,501	59,415	59,945	367,960
3 TO 6 PM	46,579	77,959	71,894	68,290	76,052	91,128	58,323	490,225
6 TO 9 PM	34,741	37,239	45,054	41,545	47,382	56,658	42,911	305,530
9 PM TO 12 AM	27,541	21,762	24,682	25,489	25,846	42,810	38,925	207,055
TOTAL	233,175	273,805	288,240	280,605	304,510	356,040	309,625	2,046,000

1993 PRELIMINARY REPORT

FATALITIES BY HOUR OF DAY AND DAY OF WEEK								
HOUR OF DAY	DAY OF WEEK							TOTAL
	SUNDAY	MONDAY	TUESDAY	WEDNESDAY	THURSDAY	FRIDAY	SATURDAY	
12 TO 3 AM	1,518	436	399	489	502	746	1,560	5,650
3 TO 6 AM	672	273	283	249	328	396	794	2,995
6 TO 9 AM	357	552	524	496	548	533	460	3,470
9 AM TO NOON	465	595	500	536	595	586	608	3,885
NOON TO 3 PM	685	658	643	710	753	805	781	5,035
3 TO 6 PM	929	895	833	842	864	1,125	987	6,475
6 TO 9 PM	1043	748	763	726	812	1,140	1,178	6,410
9 PM TO 12 AM	739	609	620	637	746	1,272	1,307	5,930
TOTAL	6,408	4,766	4,565	4,685	5,148	6,603	7,675	39,850

1993 PRELIMINARY REPORT

TOTAL CRASHES BY TYPE OF COLLISION AND HOUR OF DAY									
TYPE OF COLLISION	HOUR OF DAY								TOTAL
	12 TO 3 AM	3 TO 6 AM	6 TO 9 AM	9 AM TO NOON	NOON TO 3 PM	3 TO 6 PM	6 TO 9 PM	9 PM TO 12AM	
PEDESTRIAN	3,545	1,878	8,687	9,496	19,215	24,231	19,418	12,000	98,470
PEDALCYCLIST	720	480	3,960	8,140	13,460	25,080	14,040	5,140	71,020
OTHER SINGLE VEHICLE	218,852	134,146	198,212	179,452	210,575	267,393	283,804	252,756	1,745,190
ANGLE	60,457	26,126	254,551	332,380	490,975	612,670	315,385	155,436	2,257,980
HEAD-ON	4,834	1,014	13,293	10,968	16,007	24,140	17,267	9,537	97,060
REAR-END	38,584	13,297	196,109	208,046	325,217	473,204	204,498	95,305	1,554,260
SIDESWIPE	8,690	5,206	29,606	35,666	59,876	64,842	37,072	25,762	266,720
OTHER	1,248	1,323	7,532	8,352	11,675	13,260	6,816	6,294	56,500
TOTAL	336,930	183,470	711,950	802,500	1,147,000	1,504,820	898,300	562,230	6,147,200

1993 PRELIMINARY REPORT

INJURIES BY COLLISION TYPE AND HOUR GROUP									
TYPE OF COLLISION	HOUR OF DAY								TOTAL
	12 TO 3 AM	3 TO 6 AM	6 TO 9 AM	9 AM TO NOON	NOON TO 3 PM	3 TO 6 PM	6 TO 9 PM	9 PM TO 12AM	
PEDESTRIAN	3,332	2,208	8,837	9,688	19,263	26,247	20,247	13,248	103,140
PEDALCYCLIST	695	535	3,944	7,564	11,957	22,318	13,431	5,026	65,470
OTHER SINGLE VEHICLE	99,741	56,507	62,902	53,434	76,351	96,343	96,356	101,156	642,790
ANGLE	49,478	16,756	138,415	177,535	252,328	318,243	209,807	116,368	1,278,930
HEAD-ON	4,751	1,498	10,392	11,694	18,170	23,629	21,106	13,540	104,780
REAR-END	28,842	10,687	90,785	104,855	185,921	249,743	133,222	68,875	872,930
SIDESWIPE	4,166	2,532	6,813	6,670	12,261	12,850	9,501	9,947	64,740
OTHER	995	447	3,292	2,300	4,959	4,357	4,010	4,360	24,720
TOTAL	192,000	91,170	325,380	373,740	581,210	753,800	507,680	332,520	3,157,500

1993 PRELIMINARY REPORT

FATALITIES BY TYPE OF COLLISION AND HOUR OF DAY									
TYPE OF COLLISION	HOUR OF DAY								TOTAL
	12 TO 3 AM	3 TO 6 AM	6 TO 9 AM	9 AM TO NOON	NOON TO 3 PM	3 TO 6 PM	6 TO 9 PM	9 PM TO 12AM	
PEDESTRIAN	687	366	447	361	466	791	1,351	1,166	5,635
PEDALCYCLIST	51	20	55	62	104	180	219	104	795
OTHER SINGLE VEHICLE	3,468	1,824	1,188	1,167	1,505	1,934	2,107	2,644	15,837
ANGLE	451	240	695	1,180	1,447	1,566	1,193	778	7,550
HEAD ON	628	355	804	785	1,042	1,416	1,088	865	6,983
REAR END	218	132	164	199	268	308	259	234	1,782
SIDESWIPE	48	33	52	63	93	140	86	63	578
OTHER	99	25	65	68	110	140	107	76	690
TOTAL	5,650	2,995	3,470	3,885	5,035	6,475	6,410	5,930	39,850

1993 PRELIMINARY REPORT

FATALITIES BY TYPE OF COLLISION AND LAND USE			
TYPE OF COLLISION	LAND USE		
	RURAL	URBAN	TOTAL
PEDESTRIAN	1,825	3,810	5,635
PEDALCYCLIST	320	475	795
OTHER SINGLE VEHICLE	11,010	4,827	15,837
ANGLE	3,920	3,630	7,550
HEAD ON	5,050	1,933	6,983
REAR END	940	842	1,782
SIDESWIPE	348	230	578
OTHER	345	345	690
TOTAL	23,758	16,092	39,850

1993 PRELIMINARY REPORT

FATALITIES BY TYPE OF COLLISION AND TYPE OF HIGHWAY							
TYPE OF COLLISION	TYPE OF HIGHWAY						
	INTERSTATE	US HIGHWAYS	STATE ROADS	COUNTY ROADS	LOCAL ROADS	OTHER	TOTAL
PEDESTRIAN	668	884	1,252	672	2,026	133	5,635
PEDALCYCLIST	14	106	190	138	322	25	795
OTHER SINGLE VEHICLE	2,255	1,811	3,996	4,242	3,030	503	15,837
ANGLE	358	1,833	2,292	1,193	1,708	166	7,550
HEAD ON	509	1,963	2,770	985	579	177	6,983
REAR END	542	408	506	108	174	44	1,782
SIDESWIPE	136	126	176	64	71	5	578
OTHER	193	114	198	63	100	22	690
TOTAL	4,675	7,245	11,380	7,465	8,010	1,075	39,850

1993 PRELIMINARY REPORT

TOTAL CRASHES BY TYPE OF COLLISION AND SPEED LIMIT							
TYPE OF COLLISION	POSTED SPEED LIMIT						TOTAL
	UNDER 26 MPH	30 & 35 MPH	40 & 45 MPH	50 MPH	55 MPH	OVER 55 MPH	
PEDESTRIAN	33,784	43,809	13,328	1,8785	5,447	317	98,470
PEDALCYCLIST	27,150	30,142	9,509	1,041	3,162	16	71,020
OTHER SINGLE VEHICLE	415,017	373,140	235,830	61,528	575,677	84,008	1,745,200
ANGLE	527,901	929,663	492,949	74,571	222,507	10,379	2,257,970
HEAD-ON	19,634	34,691	22,305	3,251	16,449	730	97,060
REAR-END	217,855	537,204	430,780	90,101	259,952	18,368	1,554,260
SIDESWIPE	55,0852	81,544	45,881	8,381	69,592	6,237	266,720
OTHER	6,894	11,107	8,798	1,462	23,714	4,525	56,500
TOTAL	1,303,320	2,041,300	1,259,380	242,120	1,176,500	124,580	6,147,200

1993 PRELIMINARY REPORT

INJURIES BY TYPE OF COLLISION AND SPEED LIMIT							
TYPE OF COLLISION	POSTED SPEED LIMIT						TOTAL
	UNDER 26 MPH	30 & 35 MPH	40 & 45 MPH	50 MPH	55 MPH	OVER 55 MPH	
PEDESTRIAN	36,490	45,820	12,767	1,835	5,948	280	103,140
PEDALCYCLIST	24,741	27,480	9,134	2,106	3,009	0	65,470
OTHER SINGLE VEHICLE	94,339	140,862	108,622	27,602	234,516	36,849	642,790
ANGLE	205,260	552,660	316,073	46,743	153,571	4,623	1,278,930
HEAD-ON	16,352	36,834	26,697	3,058	21,379	460	104,780
REAR-END	90,175	303,676	246,668	45,170	173,380	13,861	872,930
SIDESWIPE	9,860	17,908	10,735	1,386	23,550	1,301	64,740
OTHER	3,093	5,960	4,684	1,100	8,747	1,136	24,720
TOTAL	480,310	1,131,200	735,380	128,000	624,100	58,510	3,157,500

1993 PRELIMINARY REPORT

FATALITIES BY TYPE OF COLLISION AND SPEED LIMIT							
TYPE OF COLLISION	POSTED SPEED LIMIT						TOTAL
	UNDER 26 MPH	30 & 35 MPH	40 & 45 MPH	50 MPH	55 MPH	OVER 55 MPH	
PEDESTRIAN	570	1,878	1,210	264	1,483	230	5,635
PEDALCYCLIST	78	266	198	28	218	7	795
OTHER SINGLE VEHICLE	883	2,666	2,254	792	7,775	1,467	15,837
ANGLE	286	1,518	1,771	500	3,307	168	7,550
HEAD ON	63	667	1,135	437	4,370	311	6,983
REAR END	29	180	289	123	888	273	1,782
SIDESWIPE	17	60	71	22	346	62	578
OTHER	24	125	107	39	313	82	690
TOTAL	1,950	7,360	7,035	2,205	18,700	2,600	39,850

1993 PRELIMINARY REPORT

DRIVERS IN TOTAL CRASHES, BY AGE AND SEX			
DRIVER AGE	DRIVER SEX		
	MALE	FEMALE	TOTAL
15 & UNDER	39,455	20,695	60,150
16 TO 20 YRS	1,097,600	685,350	1,782,950
21 TO 24 YRS	891,540	537,890	1,429,430
25 TO 34 YRS	1,698,930	1,032,530	2,731,460
35 TO 44 YRS	1,238,490	813,040	2,051,530
45 TO 54 YRS	743,465	461,785	1,205,250
55 TO 64 YRS	456,990	257,140	714,130
65 TO 69 YRS	196,145	108,455	304,600
70 TO 74 YRS	137,009	78,621	215,630
75 TO 79 YRS	92,682	61,128	153,810
80 TO 84 YRS	51,329	34,591	85,920
85 & OVER	30,965	13,575	44,540
TOTAL	6,674,600	4,104,800	10,779,400

1993 PRELIMINARY REPORT

DRIVERS IN INJURY CRASHES, BY AGE AND SEX			
DRIVER AGE	DRIVER SEX		
	MALE	FEMALE	TOTAL
15 & UNDER	17,560	6,110	23,670
16 - 20 YEARS	363,530	247,010	610,540
21 - 24 YEARS	292,177	192,723	484,900
25 - 34 YEARS	567,646	371,294	938,940
35 - 44 YEARS	403,460	295,890	699,350
45 - 54 YEARS	237,370	168,850	406,220
55 - 64 YEARS	149,940	95,000	244,940
65 - 69 YEARS	65,925	40,525	106,450
70 - 74 YEARS	46,942	30,228	77,170
75 - 79 YEARS	32,046	21,634	53,680
80 - 84 YEARS	17,056	10,964	28,020
85 & OVER	11,348	4,772	16,120
TOTAL	2,205,000	1,485,000	3,690,000

1993 PRELIMINARY REPORT

DRIVERS IN FATAL CRASHES, BY AGE AND SEX			
DRIVER AGE	DRIVER SEX		
	MALE	FEMALE	TOTAL
15 & UNDER	288	112	400
16-20 YEARS	5,467	1,933	7,400
21-24 YEARS	5,055	1,425	6,480
25-34 YEARS	10,204	3,081	13,285
35-44 YEARS	7,439	2,441	9,880
45-54 YEARS	4,667	1,473	6,140
54-64 YEARS	2,970	945	3,915
65-69 YEARS	1,102	518	1,620
70-74 YEARS	996	459	1,455
75-79 YEARS	883	417	1,300
80-84 YEARS	684	296	980
85 & OVER	410	135	545
TOTAL	40,165	13,235	53,400

1993 PRELIMINARY REPORT

DRIVERS IN TOTAL CRASHES, BY AGE AND COLLISION TYPE									
DRIVER AGE	COLLISION TYPE								
	PEDESTRIAN	PEDALCYCLIST	OTHER SINGLE VEH	ANGLE	HEAD ON	REAR END	SIDESWIPE	OTHER	TOTAL
15 & UNDER	710	590	17,515	18,348	1,233	19,484	2,043	227	60,150
16-20 YRS	17,948	10,856	405,264	722,267	28,506	513,787	72,472	11,850	1,782,950
21-24 YRS	10,548	7,024	233,839	602,232	26,103	446,368	86,925	16,391	1,429,430
25-34 YRS	20,435	16,327	412,930	1,142,079	54,215	908,798	143,405	33,271	2,731,460
35-44 YRS	23,405	14,705	272,497	869,444	35,196	704,411	104,412	27,460	2,051,530
45-54 YRS	9,566	9,155	186,620	510,624	19,961	390,795	63,280	15,249	1,205,250
55-64 YRS	8,054	5,458	88,815	319,569	11,249	233,235	41,644	6,106	714,130
65-69 YRS	4,262	3,721	60,884	139,929	4,058	77,289	12,182	2,275	304,600
70-74 YRS	1,317	1,123	20,422	125,756	1,547	54,981	8,469	2,015	215,630
75-79 YRS	695	866	19,237	86,087	2,177	36,192	7,545	1,011	153,810
80-84 YRS	794	700	7,593	55,762	2,019	14,826	3,612	614	85,920
85 & OVER	356	115	3574	27,773	666	8,874	2,711	471	44,540
TOTAL	98,090	70,640	1,729,190	4,619,870	186,930	3,409,040	548,700	116,940	10,779,400

DRIVERS IN INJURY CRASHES, BY AGE AND COLLISION TYPE									
DRIVER AGE	COLLISION TYPE								
	PEDESTRIAN	PEDALCYCLIST	OTHER SINGLE VEHICLE	ANGLE	HEAD ON	REAR END	SIDESWIPE	OTHER	TOTAL
15 & UNDER	704	588	7,101	6,523	627	7,021	937	169	23,670
16-20 YRS	16,942	10,063	125,978	233,829	15,549	189,346	15,944	2,889	610,540
21-24 YRS	10,138	5,800	70,401	203,064	14,369	162,071	15,164	3,893	484,900
25-34 YRS	19,211	13,727	130,802	381,449	32,570	327,188	23,184	10,809	938,940
35-44 YRS	22,315	13,144	73,948	290,351	20,273	253,314	18,556	7,449	699,350
45-54 YRS	8,793	8,784	43,292	169,565	10,144	150,152	12,183	3,307	406,220
55-64 YRS	7,937	4,187	18,769	110,005	6,450	90,443	5,468	1,681	244,940
65-69 YRS	3,949	3,271	12,976	49,689	2,787	31,573	1,478	727	106,450
70-74 YRS	1,308	1,116	6,314	42,951	1,271	21,906	1,959	345	77,170
75-79 YRS	681	860	4,268	32,213	1,176	14,061	314	107	53,680
80-84 YRS	789	696	2,403	16,446	1,125	6,018	283	260	28,020
85 & OVER	353	114	1,318	10,015	569	3,487	160	104	16,120
TOTAL	93,120	62,350	497,570	1,546,100	106,910	1,256,580	95,630	31,740	3,690,000

1993 PRELIMINARY REPORT

DRIVERS IN FATAL CRASHES, BY AGE AND COLLISION TYPE

DRIVER AGE	COLLISION TYPE								TOTAL
	PEDESTRIAN	PEDALCYCLIST	OTHER SINGLE VEHICLE	ANGLE	HEAD ON	REAR END	SIDESWIPE	OTHER	
15 & UNDER	18	1	196	85	70	22	1	7	400
16-20 YRS	789	116	2,784	1,642	1,476	320	153	120	7,400
21-24 YRS	752	95	2,205	1,419	1,324	381	147	157	6,480
25-34 YRS	1,654	224	3,713	3,187	2,848	1,026	295	338	13,285
35-44 YRS	1,264	145	2,366	2,464	2,308	825	239	269	9,880
45-54 YRS	731	103	1,219	1,620	1,553	551	161	202	6,140
55-64 YRS	459	47	822	1,146	931	292	97	121	3,915
65-69 YRS	184	25	335	562	323	121	34	36	1,620
70-74 YRS	107	23	328	563	279	93	33	29	1,455
75-79 YRS	89	15	271	578	243	67	17	20	1,300
80-84 YRS	61	9	201	490	149	49	10	11	980
85 & OVER	32	2	100	294	76	28	8	5	545
TOTAL	6,140	805	14,540	14,050	11,580	3,775	1,195	1,315	53,400

DRIVERS IN TOTAL CRASHES, BY AGE AND VEHICLE TYPE							
DRIVER AGE	VEHICLE TYPE						
	PASS. CARS	LIGHT TRUCKS	HEAVY-MEDIUM TRUCKS	MOTORCYCLES	BUSES	OTHER TYPES	TOTAL
15 & UNDER	38,960	14,285	958	3,119	260	2,568	60,150
16-20 YRS	1,378,350	362,030	22,150	11,426	765	8,229	1,782,950
21-24 YRS	1,035,180	327,532	44,957	13,504	1,545	6,712	1,429,430
25-34 YRS	1,866,460	708,295	114,095	25,065	8,470	9,075	2,731,460
35-44 YRS	1,306,565	608,085	99,105	13,931	18,556	5,288	2,051,530
45-54 YRS	791,635	322,962	67,660	4,617	13,545	4,831	1,205,250
55-64 YRS	505,625	163,822	32,886	995	6,158	4,644	714,130
65-69 YRS	217,290	75,187	9,158	409	576	1,980	304,600
70-74 YRS	175,985	34,284	2,208	486	1,551	1,116	215,630
75-79 YRS	131,770	20,742	175	48	312	763	153,810
80-84 YRS	77,188	8,293	345	0	0	94	85,920
85 & OVER	38,592	5,083	603	0	262	0	44,540
TOTAL	7,563,600	2,650,600	394,300	73,600	52,000	45,300	10,779,400

1993 PRELIMINARY REPORT

DRIVERS IN INJURY CRASHES, BY AGE AND VEHICLE TYPE

DRIVER AGE	VEHICLE TYPE						
	PASS. CAR	LIGHT TRUCK	MEDIUM & HEAVY TRUCK	MOTORCYCLES	BUSES	OTHER	TOTAL
15 & UNDER	12,909	5,536	154	2,934	259	1,878	23,670
16-20 YRS	482,773	113,705	4,696	8,356	241	769	610,540
21-24 YRS	364,575	96,505	11,871	9,827	330	1,792	484,900
25-34 YRS	663,122	220,071	29,606	18,544	3,582	4,015	938,940
35-44 YRS	464,864	192,617	24,666	11,145	4,669	1,389	699,350
45-54 YRS	279,148	100,674	18,300	3,837	3,241	1,020	406,220
55-64 YRS	183,171	48,340	8,835	964	1,540	2,090	244,940
65-69 YRS	82,303	21,078	1,868	384	239	578	106,450
70-74 YRS	63,827	11,713	736	375	351	168	77,170
75-79 YRS	47,525	5,995	47	44	58	11	53,680
80-84 YRS	25,099	2,826	5	0	0	90	28,020
85 & OVER	13,884	1,660	576	0	0	0	16,120
TOTAL	2,683,200	820,720	101,360	56,410	14,510	13,800	3,690,000

DRIVERS IN FATAL CRASHES, BY AGE AND VEHICLE TYPE

DRIVER AGE	VEHICLE TYPE													TOTAL
	MINI COMPACT	SUB COMPACT	COMPACT	INTER- MEDIATE	FULL SIZE	LARGEST SIZE	UNKNOWN SIZE	LIGHT TRUCK	HEAVY TRUCK	MEDIUM TRUCK	MOTOR- CYCLES	BUSES	OTHER	
15 & UNDER	26	46	64	42	23	20	6	94	1	0	39	0	39	400
16-20 YRS	716	1,106	1,444	945	305	270	207	1,905	22	21	332	0	127	7,400
21-24 YRS	522	896	1,136	715	262	233	175	1,694	205	55	487	10	90	6,480
25-34 YRS	808	1,449	1,732	1,345	569	633	320	4,067	1,072	185	791	61	253	13,285
35-44 YRS	478	807	1,097	968	479	525	216	3,261	1,127	155	501	71	195	9,880
45-54 YRS	243	407	646	659	405	354	147	1,917	852	80	203	78	149	6,140
55-64 YRS	125	229	470	515	366	333	82	1,126	428	46	63	28	104	3,915
65-69 YRS	51	116	219	302	195	199	36	406	44	10	11	8	23	1,620
70-74 YRS	48	85	212	301	265	160	39	279	11	4	12	2	37	1,455
75-79 YRS	39	101	201	320	214	173	33	188	7	2	3	2	17	1,300
80-84 YRS	38	78	158	245	175	116	19	129	1	2	6	0	13	980
85 & OVER	26	55	86	133	82	79	20	54	0	0	2	0	8	545
TOTAL	3,120	5,375	7,465	6,490	3,340	3,095	1,300	15,120	3,770	560	2,450	260	1,055	53,400

1993 PRELIMINARY REPORT

VEHICLES IN TOTAL CRASHES, BY TYPE AND COLLISION TYPE									
VEHICLE TYPE	COLLISION TYPE								
	PEDESTRIAN	PEDALCYCLIST	OTHER SINGLE VEHICLE	ANGLE	HEAD ON	REAR END	SIDESWIPE	OTHER	TOTAL
PASS. CARS	71,868	53,894	1,101,583	3,388,240	133,277	2,384,759	365,567	64,412	7,563,600
LIGHT TRUCKS	21,285	14,551	489,858	1,029,298	47,818	891,890	123,083	32,817	2,650,600
MEDIUM & HEAVY TRUCKS	1,633	921	87,131	136,949	3,740	97,292	48,414	18,220	394,300
MOTORCYCLES	841	548	30,643	27,460	540	9,440	3,477	651	73,600
BUSES	1,562	192	6,918	22,571	782	13,873	5,549	553	52,000
OTHER TYPE	901	534	13,057	15,352	773	11,786	2,610	287	45,300
TOTAL	98,090	70,640	1,729,190	4,619,870	186,930	3,409,040	548,700	116,940	10,779,400

VEHICLES IN INJURY CRASHES, BY TYPE AND COLLISION TYPE									
VEHICLE TYPE	COLLISION TYPE								
	PEDESTRIAN	PEDALCYCLIST	OTHER SINGLE VEHICLE	ANGLE	HEAD ON	REAR END	SIDESWIPE	OTHER	TOTAL
PASS. CARS	68,394	46,193	332,543	1,153,843	77,494	920,219	63,115	21,399	2,683,200
LIGHT TRUCKS	20,188	14,033	121,712	320,779	25,988	290,090	21,379	6,551	820,720
MEDIUM & HEAVY TRUCKS	1,593	902	14,135	39,291	1,931	32,617	7,885	3,006	101,360
MOTORCYCLES	800	515	25,889	19,828	511	6,139	2,099	629	56,410
BUSES	1,299	191	1,820	6,921	500	3,579	45	155	14,510
OTHER TYPE	846	516	1,471	5,438	486	3,936	1,107	0	13,800
TOTAL	93,120	62,350	497,570	1,546,100	106,910	1,256,580	95,630	31,740	3,690,000

1993 PRELIMINARY REPORT

VEHICLES IN FATAL CRASHES, BY TYPE AND COLLISION TYPE									
VEHICLE TYPE	COLLISION TYPE								TOTAL
	PEDESTRIAN	PEDALCYCLIST	OTHER SINGLE VEHICLE	ANGLE	HEAD ON	REAR END	SIDESWIPE	OTHER	
MINICOMPACT	293	29	1,030	704	774	162	61	50	3,120
SUBCOMPACT	568	79	1,690	1,289	1,186	310	135	105	5,375
COMPACT	846	93	2,187	1,905	1,639	441	180	170	7,465
INTERMEDIATE	727	86	1,660	1,904	1,475	371	152	99	6,490
FULL SIZE	433	41	770	1,071	685	216	62	58	3,340
LARGEST SIZE	457	63	681	915	660	189	71	48	3,095
UNKNOWN SIZE	224	23	362	334	218	80	31	172	1,300
LIGHT TRUCKS & VANS	1,730	280	4,564	3,595	3,382	930	327	350	15,120
HEAVY TRUCKS	280	41	317	1,213	935	698	120	127	3,770
MEDIUM TRUCK	51	10	52	209	132	82	15	16	560
MOTORCYCLES	34	8	1,048	700	316	188	96	101	2,450
BUSES	82	11	11	62	50	34	5	6	260
OTHER	415	41	168	149	128	74	60	28	1,055
TOTAL	6,140	805	14,540	14,050	11,580	3,775	1,315	1,330	53,400

VEHICLES IN TOTAL CRASHES, BY TYPE AND DIRECTION OF IMPACT							
VEHICLE TYPE	DIRECTION OF IMPACT						TOTAL
	FRONTAL	LEFT	NON COLL.	OTHER	REAR	RIGHT	
PASS. CARS	3,595,085	1,230,734	93,560	27,078	1,454,081	1,163,062	7,563,600
LIGHT TRUCKS	1,197,085	388,133	75,920	8,205	589,055	392,202	2,650,600
MEDIUM & HEAVY TRUCKS	134,003	64,937	32,253	5,215	66,847	91,045	394,300
MOTORCYCLES	34,503	8,752	15,740	344	4,737	9,524	73,600
BUSES	14,114	11,874	1,046	55	13,934	10,977	52,000
OTHER TYPE	18,630	6,650	511	293	9,826	9,390	45,300
TOTAL	4,993,420	1,711,080	219,030	41,190	2,138,480	1,676,200	10,779,400

1993 PRELIMINARY REPORT

VEHICLES IN INJURY CRASHES, BY TYPE AND DIRECTION OF IMPACT							
VEHICLE TYPE	DIRECTION OF IMPACT						TOTAL
	FRONTAL	LEFT	NON COLL.	OTHER	REAR	RIGHT	
PASS. CARS	1,363,124	376,611	41,547	6,460	547,117	348,341	2,683,200
LIGHT TRUCKS	425,316	104,220	30,250	1,315	158,743	100,876	820,720
MEDIUM & HEAVY TRUCKS	44,657	14,649	7,738	666	17,247	16,403	101,360
MOTORCYCLES	26,339	5,764	14,433	333	3,070	6,471	56,410
BUSES	5,930	1,992	1,043	50	3,177	2,318	14,510
OTHER TYPE	6,234	2,234	439	6	2,756	2,131	13,800
TOTAL	1,871,600	505,470	95,450	8,830	732,110	476,540	3,690,000

VEHICLES IN FATAL CRASHES, BY TYPE AND DIRECTION OF IMPACT

VEHICLE TYPE	DIRECTION OF IMPACT						
	FRONTAL	LEFT	NON COLL.	OTHER	REAR	RIGHT	TOTAL
MINICOMPACT	1,786	396	230	198	151	359	3,120
SUBCOMPACT	3,074	791	273	287	272	678	5,375
COMPACT	4,566	994	293	365	354	893	7,465
INTERMEDIATE	4,011	863	214	328	315	759	6,490
FULL SIZE	2,119	417	87	150	144	423	3,340
LARGEST SIZE	2,080	342	77	132	152	312	3,095
UNKNOWN SIZE	751	178	52	91	69	159	1,300
LIGHT TRUCK OR VAN	9,931	1,131	1,406	779	739	1,134	15,120
HEAVY TRUCK	2,222	336	98	290	615	209	3,770
MEDIUM TRUCK	364	39	19	27	79	32	560
MOTORCYCLES	1,604	184	180	258	68	156	2,450
BUS	161	7	5	32	37	18	260
OTHER	461	67	51	343	85	48	1,055
TOTAL	33,130	5,745	2,985	3,280	3,080	5,180	53,400

1993 PRELIMINARY REPORT

VEHICLE OCCUPANT INJURIES BY DRIVER AGE AND COLLISION TYPE							
DRIVER AGE	COLLISION TYPE						
	SINGLE VEHICLE	ANGLE	HEAD ON	REAR END	SIDESWIPE	OTHER	TOTAL
15 & UNDER	13,120	6,173	722	4,291	605	89	25,000
16-20 YRS	181,420	210,425	18,408	121,624	12,715	3,268	547,860
21-24 YRS	90,877	162,375	13,087	109,101	10,389	3,811	389,640
25-34 YRS	162,367	326,287	32,760	230,231	15,107	7,388	774,140
35-44 YRS	89,926	241,976	17,835	187,849	12,125	5,479	555,190
45-54 YRS	50,836	134,089	9,470	106,239	7,224	2,672	310,530
55-64 YRS	23,286	85,807	5,954	64,693	3,404	1,126	184,270
65-69 YRS	15,169	38,020	2,560	21,297	1,098	296	78,440
70-74 YRS	7,131	33,288	1,201	15,485	1,586	269	58,960
75-79 YRS	5,422	22,908	1,038	8,160	140	22	37,690
80-84 YRS	2,705	12,731	1,303	3,554	287	340	20,920
85 & OVER	1,571	6,911	612	1,806	160	0	11,060
TOTAL	643,830	1,280,990	104,950	874,330	64,840	24,760	2,993,700

VEHICLE OCCUPANT FATALITIES, BY DRIVER AGE AND COLLISION TYPE

DRIVER AGE	COLLISION TYPE						
	SINGLE VEHICLE	ANGLE	HEAD ON	REAR END	SIDESWIPE	OTHER	TOTAL
15 & UNDER	217	61	64	13	2	8	365
16-20 YRS	3,135	912	1,099	177	105	87	5,515
21-24 YRS	2,439	698	834	175	72	98	4,316
25-34 YRS	4,060	1,329	1,579	447	122	158	7,695
35-44 YRS	2,536	995	1,167	331	77	114	5,220
45-54 YRS	1,296	721	792	205	72	84	3,170
54-64 YRS	851	621	579	132	57	65	2,305
65-69 YRS	349	412	243	85	24	22	1,135
70-74 YRS	346	467	248	69	21	19	1,170
75-79 YRS	280	544	226	61	14	20	1,145
80-84 YRS	203	462	153	46	6	10	880
85 & OVER	108	293	71	24	3	5	504
TOTAL	15,820	7,515	7,055	1,765	575	690	33,420

1993 PRELIMINARY REPORT

VEHICLE OCCUPANT INJURIES BY DRIVER AGE AND VEHICLE TYPE							
DRIVER AGE	VEHICLE TYPE						TOTAL
	PASS. CAR	LIGHT TRUCK OR VAN	MEDIUM & HEAVY TRUCK	MOTORCYCLE	BUS	OTHER	
15 & UNDER	13,166	6,017	411	3,421	233	1,752	25,000
16-20 YRS	438,800	96,230	2,966	9,530	70	264	547,860
21-24 YRS	306,089	66,246	5,894	10,255	512	644	389,640
25-34 YRS	587,808	151,233	10,446	19,235	3,168	2,250	774,140
35-44 YRS	393,116	136,474	8,273	11,731	4,736	860	555,190
45-54 YRS	230,685	66,218	4,972	3,960	3,824	871	310,530
55-64 YRS	148,131	29,296	3,287	1,069	2,048	439	184,270
65-69 YRS	62,159	14,222	940	400	214	505	78,440
70-74 YRS	49,896	7,672	421	374	475	122	58,960
75-79 YRS	35,048	2,584	0	45	0	13	37,690
80-84 YRS	18,971	1,949	0	0	0	0	20,920
85 & OVER	9,551	1,509	0	0	0	0	11,060
TOTAL	2,293,420	579,650	37,610	60,020	15,280	7,720	2,993,700

VEHICLE OCCUPANT FATALITIES BY DRIVER AGE AND VEHICLE TYPE

DRIVER AGE	VEHICLE TYPE													TOTAL
	MINI-COMPACT	SUB-COMPACT	COMPACT	INTER-MEDIATE	FULL SIZE	LARGEST SIZE	UNKNOWN SIZE	LIGHT TRUCK	HEAVY TRUCK	MEDIUM TRUCK	MOTOR-CYCLES	BUSES	OTHER	
15 & UNDER	26	54	58	37	21	13	6	85	0	0	41	0	24	365
16-20 YRS	646	902	1,140	693	181	150	151	1,253	6	6	317	0	70	5,515
21-24 YRS	402	675	874	481	165	112	112	945	32	7	470	0	40	4,315
25-34 YRS	643	1,058	1,156	838	300	300	191	2,145	147	29	789	8	91	7,695
35-44 YRS	377	578	740	568	224	236	146	1,606	142	34	500	5	64	5,220
45-54 YRS	205	307	418	419	234	163	87	965	109	12	203	5	43	3,170
54-64 YRS	114	182	352	383	227	194	54	626	65	9	62	2	35	2,305
65-69 YRS	42	101	176	221	141	119	23	278	70	3	9	0	15	1,135
70-74 YRS	46	76	184	247	201	119	28	234	3	2	13	0	17	1,170
75-79 YRS	36	87	195	287	196	144	27	156	3	2	3	0	9	1,145
80-84 YRS	41	71	159	217	152	92	18	114	1	1	6	0	8	880
85 & OVER	27	54	88	129	68	68	17	48	0	0	2	0	4	505
TOTAL	2,605	4,145	5,540	4,520	2,110	1,710	860	8,455	515	105	2,415	20	420	33,420

1993 PRELIMINARY REPORT

VEHICLE OCCUPANT INJURIES BY VEHICLE TYPE AND COLLISION TYPE							
VEHICLE TYPE	COLLISION TYPE						
	SINGLE VEHICLE	ANGLE	HEAD ON	REAR END	SIDESWIPE	OTHER	TOTAL
PASS. CARS	431,435	1,020,485	80,476	695,034	47,306	18,684	2,293,420
LIGHT TRUCKS	163,800	218,276	21,819	159,869	11,922	3,964	579,650
MEDIUM & HEAVY TRUCKS	15,314	10,690	880	6,884	2,790	1,052	37,610
MOTORCYCLES	28,608	21,076	566	7,038	2,098	634	60,020
BUSES	2,921	7,627	557	3,713	36	426	15,280
OTHER TYPE	1,752	2,836	652	1,792	688	0	7,720
TOTAL	643,830	1,280,990	104,950	874,330	64,840	24,760	2,993,700

VEHICLE OCCUPANT FATALITIES BY VEHICLE TYPE AND COLLISION TYPE

VEHICLE TYPE	COLLISION TYPE						TOTAL
	SINGLE VEHICLE	ANGLE	HEAD ON	REAR END	SIDESWIPE	OTHER	
MINICOMPACT	1,102	600	701	117	41	44	2,605
SUBCOMPACT	1,832	976	990	188	67	92	4,145
COMPACT	2,430	1,275	1,354	269	109	103	5,540
INTERMEDIATE	1,794	1,250	1,101	231	63	81	4,520
FULL SIZE	840	649	426	127	29	39	2,110
LARGEST SIZE	717	453	404	79	26	31	1,710
UNKNOWN SIZE	411	219	161	43	14	12	860
LIGHT TRUCK OR VAN	4,993	1,252	1,473	431	152	154	8,455
HEAVY TRUCK	337	43	43	59	11	22	515
MEDIUM TRUCK	58	16	19	8	1	3	105
MOTORCYCLE	1,070	693	326	181	54	91	2,415
BUSES	13	3	4	0	0	0	20
OTHER	223	86	53	32	8	18	420
TOTAL	15,820	7,515	7,055	1,765	575	690	33,420

1993 PRELIMINARY REPORT

VEHICLE OCCUPANT INJURIES BY VEHICLE TYPE AND DIRECTION OF IMPACT							
VEHICLE TYPE	DIRECTION OF IMPACT						
	FRONTAL	LEFT	NON COLL.	OTHER	REAR	RIGHT	TOTAL
PASS. CARS	1,038,755	355,125	54,618	7,448	527,588	309,886	2,293,420
LIGHT TRUCKS	261,528	81,086	42,667	1,238	121,439	71,692	579,650
MEDIUM & HEAVY TRUCKS	14,528	5,275	7,398	508	5,134	4,767	37,610
MOTORCYCLES	28,013	5,984	16,039	308	3,237	6,439	60,020
BUSES	5,109	3,145	1,488	348	3,660	1,530	15,280
OTHER TYPE	3,757	1,295	560	0	1,092	1,016	7,720
TOTAL	1,351,690	451,910	122,770	9,850	662,150	395,330	2,993,700

VEHICLE OCCUPANT FATALITIES BY VEHICLE TYPE AND DIRECTION OF IMPACT

VEHICLE TYPE	DIRECTION OF IMPACT						
	FRONTAL	LEFT	NON COLL.	OTHER	REAR	RIGHT	TOTAL
MINICOMPACT	1,313	398	244	166	108	376	2,605
SUBCOMPACT	2,034	725	293	239	172	682	4,145
COMPACT	2,926	915	309	288	205	897	5,540
INTERMEDIATE	2,331	816	220	235	194	724	4,520
FULL SIZE	1,074	374	96	111	73	382	2,110
LARGEST SIZE	944	269	77	86	51	283	1,710
UNKNOWN SIZE	410	156	59	43	43	149	860
LIGHT TRUCK OR VAN	4,420	770	1,530	577	282	876	8,455
HEAVY TRUCK	261	29	105	55	16	49	515
MEDIUM TRUCK	61	9	20	5	4	6	105
MOTORCYCLES	1,598	180	179	237	65	156	2,415
BUSES	10	1	62	0	0	3	20
OTHER	168	48	47	88	32	37	420
TOTAL	17,550	4,690	3,185	2,130	1,245	4,620	33,420

1993 PRELIMINARY REPORT

VEHICLE OCCUPANT INJURIES, BY DRIVER AGE AND SEX			
DRIVER AGE	DRIVER SEX		
	MALE	FEMALE	TOTAL
10 TO 15 YEARS	18,214	6,786	25,000
16 TO 20 YEARS	307,837	240,023	547,860
21 TO 24 YEARS	218,190	171,450	389,640
25 TO 34 YEARS	424,060	350,080	774,140
35 TO 44 YEARS	287,671	267,519	555,190
45 TO 54 YEARS	161,419	149,111	310,530
55 TO 64 YEARS	107,852	76,418	184,270
65 TO 69 YEARS	46,426	32,014	78,440
70 TO 74 YEARS	35,496	23,464	58,960
75 TO 79 YEARS	21,887	15,803	37,690
80 TO 84 YEARS	12,890	8,030	20,920
85 & OVER	7,758	3,302	11,060
TOTAL	1,649,700	1,344,000	2,993,700

1993 PRELIMINARY REPORT

VEHICLE OCCUPANT FATALITIES, BY DRIVER AGE AND SEX			
DRIVER AGE	DRIVER SEX		
	MALE	FEMALE	TOTAL
10-15 YEARS	258	107	365
16-20 YEARS	4,111	1,404	5,515
21-24 YEARS	3,407	908	4,315
25-34 YEARS	5,788	1,907	7,695
35-44 YEARS	3,791	1,429	5,220
45-54 YEARS	2,255	915	3,170
54-64 YEARS	1,633	672	2,305
65-69 YEARS	733	402	1,135
70-74 YEARS	799	371	1,170
75-79 YEARS	777	368	1,145
80-84 YEARS	615	265	880
85 & OVER	388	117	505
TOTAL	24,555	8,865	33,420

1993 PRELIMINARY REPORT

TRAFFIC INJURIES BY AGE OF VICTIM AND PERSON TYPE					
AGE OF VICTIM	PERSON TYPE				
	DRIVERS	PASSENGERS	PEDESTRIANS	PEDALCYCLISTS	TOTAL
4 & UNDER	0	73,090	5,827	223	79,140
5 TO 9 YEARS	0	79,345	11,245	8,750	99,340
10 TO 15 YEARS	12,668	131,000	16,540	20,052	180,260
16 TO 20 YEARS	331,893	201,781	8,380	7,106	549,160
21 TO 24 YEARS	267,836	98,871	7,656	6,827	381,190
25 TO 34 YEARS	510,716	153,427	16,874	9,013	690,030
35 TO 44 YEARS	372,665	96,300	12,921	5,534	487,420
45 TO 54 YEARS	219,770	55,925	7,780	3,125	286,600
55 TO 64 YEARS	127,050	50,415	4,942	1,333	183,740
65 TO 69 YEARS	56,620	19,015	1,546	209	77,390
70 TO 74 YEARS	40,300	15,646	2,072	172	58,190
75 TO 79 YEARS	26,086	15,931	2,905	228	45,150
80 TO 84 YEARS	16,192	7,946	1,531	211	25,880
85 & OVER	8,754	4,458	781	17	14,010
TOTAL	1,990,550	1,003,150	101,000	62,800	3,157,500

1993 PRELIMINARY REPORT

TRAFFIC FATALITIES BY VICTIM'S AGE AND PERSON TYPE					
AGE OF VICTIM	PERSON TYPE				
	DRIVERS	PASSENGERS	PEDESTRIANS	PEDALCYCLISTS	TOTAL
4 & UNDER	0	597	247	16	860
5 TO 9 YEARS	0	426	307	107	840
10-15 YEARS	189	772	275	169	1,405
16-20 YEARS	3,165	1,938	288	69	5,460
21-24 YEARS	2,841	1,193	302	44	4,380
25-34 YEARS	5,344	1,518	994	144	8,000
35-44 YEARS	3,883	983	923	101	5,890
45-54 YEARS	2,468	590	577	55	3,690
54-64 YEARS	1,743	546	489	42	2,820
65-69 YEARS	796	358	248	18	1,420
70-74 YEARS	815	380	241	14	1,450
75-79 YEARS	840	439	280	6	1,565
80-84 YEARS	673	270	261	6	1,210
85 & OVER	403	250	203	4	860
TOTAL	23,160	10,260	5,635	795	39,850

1993 PRELIMINARY REPORT

TRAFFIC INJURIES BY AGE AND SEX OF VICTIM			
AGE OF VICTIM	SEX OF VICTIM		
	MALE	FEMALE	TOTAL
4 & UNDER	41,727	37,413	79,140
5 TO 9 YEARS	51,735	47,605	99,340
10 TO 15 YEARS	88,869	91,391	180,260
16 TO 20 YEARS	283,244	265,916	549,160
21 TO 24 YEARS	200,052	181,138	381,190
25 TO 34 YEARS	357,035	332,995	690,030
35 TO 44 YEARS	235,522	251,898	487,420
45 TO 54 YEARS	132,696	153,904	286,600
55 TO 64 YEARS	81,983	101,757	183,740
65 TO 69 YEARS	36,436	40,954	77,390
70 TO 74 YEARS	26,312	31,878	58,190
75 TO 79 YEARS	18,433	26,717	45,150
80 TO 84 YEARS	11,395	14,485	25,880
85 & OVER	7,261	6,749	14,010
TOTAL	1,572,700	1,584,800	3,157,500

1993 PRELIMINARY REPORT

TRAFFIC FATALITIES BY AGE AND SEX OF VICTIM			
AGE OF VICTIM	SEX OF VICTIM		
	MALE	FEMALE	TOTAL
4 & UNDER	458	402	860
5 TO 9 YEARS	487	353	840
10-15 YEARS	862	543	1,405
16-20 YEARS	3,903	1,557	5,460
21-24 YEARS	3,351	1,029	4,380
25-34 YEARS	5,943	2,057	8,000
35-44 YEARS	4,201	1,689	5,890
45-54 YEARS	2,540	1,150	3,690
55-64 YEARS	1,820	1,000	2,820
65-69 YEARS	773	647	1,420
70-74 YEARS	815	635	1,450
75-79 YEARS	838	727	1,565
80-84 YEARS	686	524	1,210
85 & OVER	493	367	860
TOTAL	27,170	12,680	39,850

1993 PRELIMINARY REPORT

TRAFFIC INJURIES BY MONTH AND PERSON TYPE					
MONTH	PERSON TYPE				
	DRIVERS	PASSENGERS	PEDESTRIANS	PEDALCYCLISTS	TOTAL
JANUARY	160,287	79,190	7,622	3,201	250,300
FEBRUARY	150,867	68,385	6,845	1,903	228,000
MARCH	150,327	66,119	9,771	2,833	228,050
APRIL	148,169	79,406	8,252	4,553	240,380
MAY	182,918	90,984	9,720	7,688	291,310
JUNE	161,336	83,822	8,240	9,482	262,880
JULY	169,983	88,887	8,480	8,520	275,870
AUGUST	165,258	95,206	7,209	8,477	276,150
SEPTEMBER	168,414	93,430	9,515	5,641	277,000
OCTOBER	191,164	92,183	7,853	4,970	296,170
NOVEMBER	180,475	85,001	10,575	2,219	278,270
DECEMBER	161,352	80,537	6,918	3,313	252,120
TOTAL	1,990,550	1,003,150	101,000	62,800	3,157,500

1993 PRELIMINARY REPORT

TRAFFIC FATALITIES BY MONTH AND PERSON TYPE					
MONTH	PERSON TYPE				
	DRIVERS	PASSENGERS	PEDESTRIANS	PEDALCYCLISTS	TOTAL
JANUARY	1,596	696	468	30	2,790
FEBRUARY	1,500	590	437	38	2,565
MARCH	1,600	763	475	52	2,890
APRIL	1,791	743	418	58	3,010
MAY	2,002	920	456	82	3,460
JUNE	1,964	863	438	110	3,375
JULY	2,200	1,112	460	108	3,880
AUGUST	2,267	993	477	98	3,835
SEPTEMBER	2,096	888	500	71	3,555
OCTOBER	2,160	973	569	63	3,765
NOVEMBER	2,039	879	507	50	3,475
DECEMBER	1,945	840	430	35	3,250
TOTAL	23,160	10,260	5,635	795	39,850

1993 PRELIMINARY REPORT

TRAFFIC INJURIES BY VEHICLE TYPE AND PERSON TYPE					
	PERSON TYPE				
VEHICLE TYPE	DRIVERS	PASSENGERS	PEDESTRIANS	PEDALCYCLISTS	TOTAL
PASSENGER CAR	1,512,620	780,640	74,155	46,685	2,414,100
LIGHT TRUCK	383,892	195,794	21,818	13,896	615,400
MEDIUM & HEAVY TRUCK	32,138	5,575	2,048	1,009	40,770
MOTORCYCLE	51,902	8,137	847	494	61,380
BUS	3,582	11,704	1,631	193	17,110
OTHER TYPE	6,416	1,300	501	523	8,740
TOTAL	1,990,550	1,003,150	101,000	62,800	3,157,500

1993 PRELIMINARY REPORT

TRAFFIC FATALITIES BY VEHICLE TYPE AND PERSON TYPE					
VEHICLE TYPE	PERSON TYPE				
	DRIVERS	PASSENGERS	PEDESTRIANS	PEDALCYCLISTS	TOTAL
MINICOMPACT	1,808	797	243	27	2,875
SUBCOMPACT	2,798	1,347	479	76	4,700
COMPACT	3,645	1,895	780	90	6,410
INTERMEDIATE	3,000	1,520	619	81	5,220
FULL SIZE	1,400	710	368	37	2,515
LARGEST SIZE	1,154	556	369	56	2,135
UNKNOWN SIZE	570	290	313	37	1,210
LIGHT TR & VANS	5,775	2,680	1,573	272	10,300
HEAVY TRUCK	455	60	269	41	825
MEDIUM TRUCK	76	29	44	11	160
MOTORCYCLES	2,182	233	32	8	2,455
BUSES	5	15	75	10	105
OTHER	292	128	471	49	940
TOTAL	23,160	10,260	5,635	795	39,850

