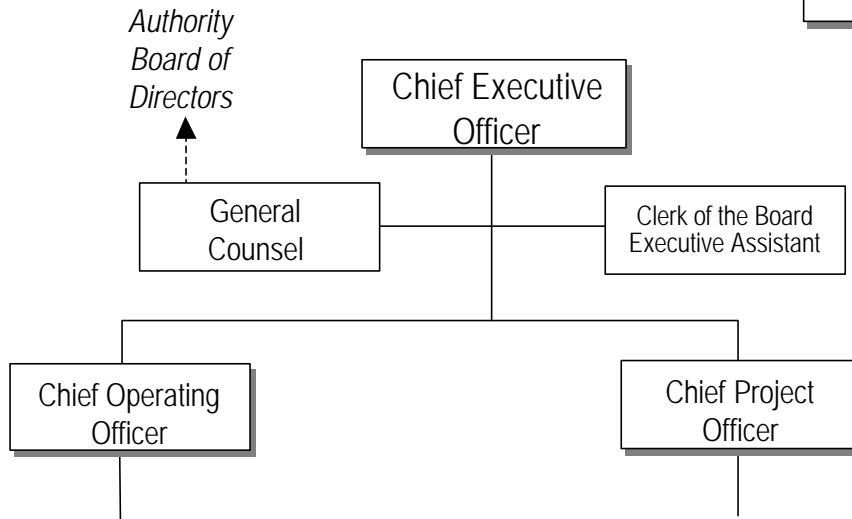


# Exposition Metro Line Construction Authority

## Proposed Staffing Plan

Estimated FY06 Staffing = 15  
Estimated Peak Staffing = 35



### Finance

- Budget and Funds management
- Grant Appropriation
- Accounting
- Payroll
- Accounts Payable
- Audit

### Contract & Risk Management

- Bid Solicitation
  - Professional Services
  - Construction
- Prequalification
- Purchase Orders
- Contract Compliance (Labor and payment)
- Cost/Price Analysis
- Insurance and Bonds

### Communications

- Governmental and Elected Officials Coordination
- Community Relations
- External Communications (newsletters, media, etc)
- Customer Information (Signage, maps, etc)
- Board Research Services & Reports
- Public Arts Program

### Real Estate

- Appraisals, acquisition & relocation
- Joint Development
- Temporary Real Estate Easements

### Diversity and Economic Opportunity

- DBE and OBE program
  - Professional Services
  - Construction

### Jobs Program

### Human Resources

- Employment
- Benefits
- Hiring and Disciplinary action

### Engineering

- Civil Structural & Utilities
- Mechanical, Electrical and Traction Power
- System Fire/Life Safety
- SCADA/ Communication and train control
- Noise and Vibration
- CADD Support
- Value Engineering
- Special Studies

### Construction Management

- Technical submittals, shop drawings and constructibility reviews
- Geotechnical investigation
- Preconstruction Surveys
- Change Orders/Claims entitlement and analysis
- Disputes and technical issue resolution
- Physical Construction Process and payment approval
- Review Shop Drawings and verify As-built Drawings
- Construction Oversight
- Verify Drawing & Specification Compliance
- Coordinate Prime Contractor Interfaces
- System testing and Startup
- Metro Blue Line Tie-in
- Fire Life Safety certification
- Project Close-out

### Quality Assurance

- Contractor compliance with QA/QC program
- Quality Audits
- Material testing
- Punchlist preparation

### Third Party Coordination

- Jurisdictional Approvals
- CPUC approval
- Utility relocation coordination
- Master Cooperative and Utility Cooperative Agreements
- Betterment Agreements
- Coordination with Other Agencies

### Project Safety

- Contractor construction safety compliance
- Rail Operations Safety
- Site Safety program

### Environmental Services

- Environmental Compliance Monitoring
- Administer Minor Environmental Clearances
- Mitigation Monitoring Plan
- Environmental Hazards and contaminated material
- Accept Test Laboratories
- Mitigation Testing

### Project Control

- Estimate Costs
- Cost management
- Schedule control
- Configuration & Document Control
- Monthly Reports