

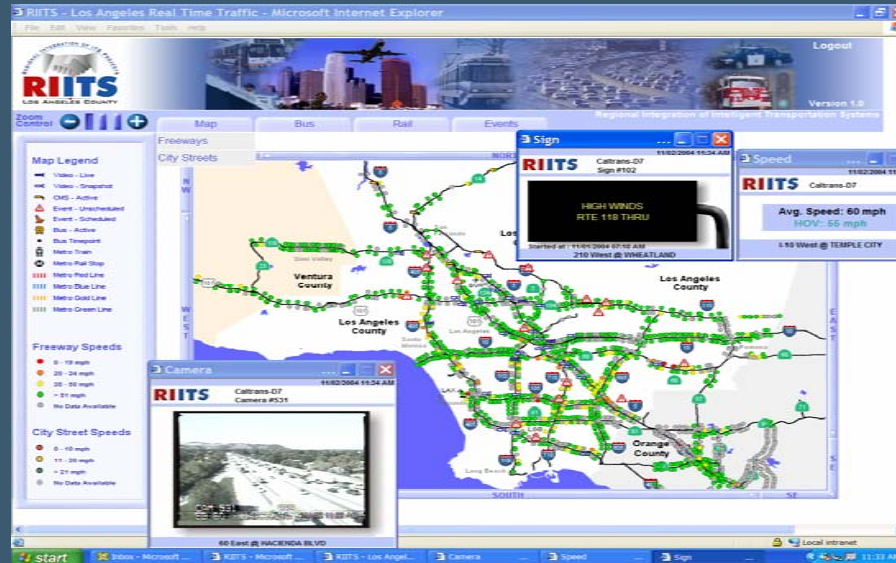
# Regional Integration of Intelligent Transportation Systems (RIITS) Program and Network

Planning and Programming  
July 18, 2007



**Metro**

# Purpose



- To continue funding for the RIITS Program and the Network's operation and maintenance.
- To expand the Network to include interface with additional cities and transportation agencies.

# Importance of ITS

- ITS improves mobility by maximizing the performance of the transportation infrastructure.
- ITS is one of the most cost effective solutions to traffic congestion problems.
- ITS improves communication and cooperation among multiple transportation modes, providers, and users.

# What is the RIITS Network?

- The RIITS Network is a tool for collecting and disseminating real time transportation data.
- The goal is to coordinate multi-modal operations among regional transportation stakeholders.
- The RIITS Network represents the Los Angeles Regional ITS Architecture, enabling Metro to meet federal funding requirements.

# RIITS Partners/Users

## PUBLIC

- Metro Transit
- Caltrans District 7
- LADOT
- CHP
- Long Beach Transit
- Foothill Transit
- LA County Public Works
- Ports of Long Beach and Los Angeles
- LA County Sheriff Department

## PRIVATE

- TrafficGuage
- KABC
- TANN
- SigAlert
- Traffic.com
- KTLA
- FOX/KCOP/KTTV
- Iteris
- Clear Channel
- EEMINDER
- Traffic Cast

# Benefits of RIITS Network

- **Creates a common communication network for all modes of transportation.**
- **Provides real time multi-modal data to public and private users.**
- **Enhances the performance of the existing transportation systems through coordinated operations.**

# Proposed RIITS FY08 Projects

- Provide real time traffic data for the LA 511 system.
- Interface with LADOT , Caltrans District 7, and LA County IEN.
- Interface with Long Beach Transit and Foothill Transit.
- Website base map upgrade.
- 24/7 Operation and Maintenance.
- Provide real time transit vehicle location data for Metro's Next Bus Arrival system.
- Provide real time streaming video to Los Angeles County Sheriff mobile units for incident management.
- Development of a Regional ITS Long Range Plan.
- Provide RIITS Network user training.

# Future RIITS Projects

- Expand the exchange of real time data within the region.
- Use the RIITS Network to advance Integrated Corridor Management (ICM) implementation.
- Use ITS applications to help the movement of goods.
- Develop performance evaluation measures for ITS deployments within the region.