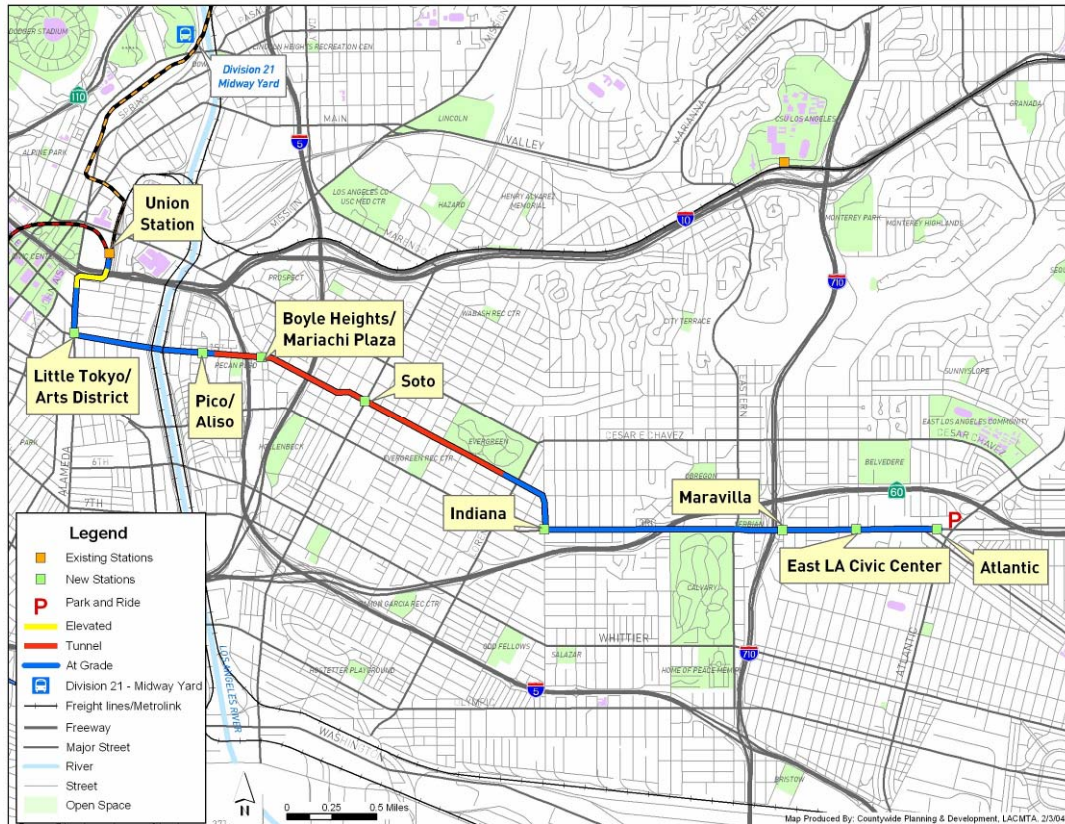


Chief Capital Management Officer Report

June 19, 2008

Metro Gold Line Eastside Extension Project Update June 2008



- 6 Mile Alignment
- 1.7 Miles of Tunnel
- 8 Stations (6 At-Grade and 2 Underground)
- Park & Ride Facility at Pomona/Atlantic
- Direct Connection to the Pasadena Metro Gold Line at Union Station
- \$898.8 million
- Opens in 2009

Metro Gold Line Eastside Extension

Recent Major Accomplishments

June 2008

- The Project is over 82% complete and is on-time and within budget.
- Installation of the tracks is approximately 93% complete and the track and guideway construction along 3rd Street is nearly completed.
- Installation of the Overhead Catenary System power poles and wires is 85% complete.
- Construction of the two underground stations is 60% complete.
- Underground construction of the West Portal, 1st/Boyle Station, 1st/Soto Station and the East Portal has progressed to the point at which the temporary concrete street deck panels are being removed in phases from West-to-East; followed by street restoration that will be completed at the last location by mid-summer.
- Phases 1 (West Portal) and 2 (1st/Boyle) have been completed and Phase 3 (1st/Soto) began on June 6, 2008.



Metro Gold Line Eastside Extension Street Closures Schedule For Temporary Street Decking Removal

Location	Start	Finish	March 2008					April 2008				May 2008				June 2008				July 2008				August 2008				September 2008			
			3/2	3/9	3/16	3/23	3/30	4/6	4/13	4/20	4/27	5/4	5/11	5/18	5/25	6/1	6/8	6/15	6/22	6/29	7/6	7/13	7/20	7/27	8/3	8/10	8/17	8/24	8/31	9/7	9/14
1st/Gless																															
Full Closure	03/28/08	04/07/08												Completed April 6, 2008																	
Partial Closures - Weekend only	03/29/08	04/20/08																													
1st/Boyle																															
Full Closure	04/11/08	05/05/08												Completed May 4, 2008																	
Partial Closures - Weekend only	04/25/08	06/08/08																													
1st/Soto																															
Full Closure	05/09/08	06/02/08																Began on June 6, 2008													
Partial Closures - Weekend only	06/13/08	08/10/08																													
1st/Lorena																															
Full Closure	06/06/08	06/30/08																Postponed													
Partial Closures - Weekend only	08/15/08	09/21/08																													

Metro's Contractor postponed Phase 3 to accommodate the Hollenbeck Police Station construction street closure. The full street closure began on June 6th and will last 4 weeks.



Metro Gold Line Eastside Extension Deck Removal/Street Restoration Phase 3 – 1st/Soto



Concrete deck panels and steel deck beam removal over the 1st/Soto underground station.



New colored sidewalks were installed before street demolition and deck removal to maintain pedestrian access.

Phase 3 (1st/Soto) Deck Removal/Street Restoration began on June 6, 2008 and is scheduled to be completed by July 3, 2008. Phase 1 (1st/Gless) & Phase 2 (1st/Boyle) were completed on-time on April 6, 2008 and May 4, 2008 respectively.

Metro Gold Line Eastside Extension 1st/Soto Station Underground Construction

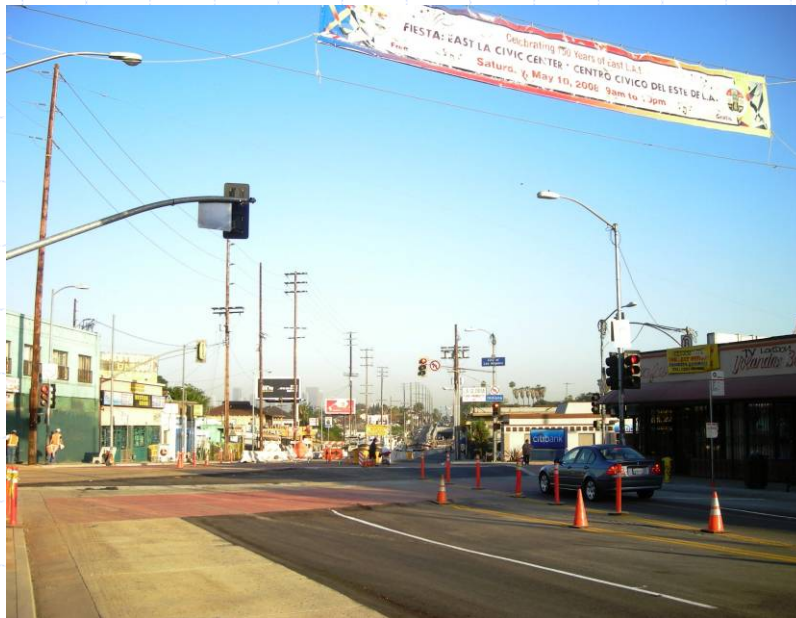


Trackwork installation at westbound tunnel interface at 1st/Soto underground station.



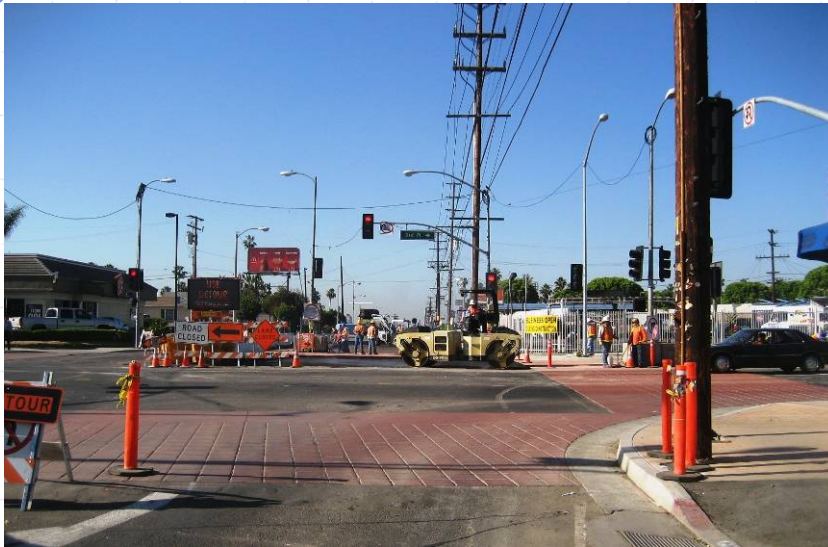
Steel reinforcement installation for concrete structures at the train platform level.

Metro Gold Line Eastside Extension At-Grade Construction Along 1st Street Lorena Street to Indiana Street



Construction of the tracks and guideway continues along 1st Street between Lorena Street and Indiana Street. The 1st/Indiana intersection was completed and re-opened with new colored sidewalks and stamped colored crosswalks on May 16, 2008.

Metro Gold Line Eastside Extension At-Grade Construction 3rd Street and Indiana Street



Construction of the Indiana Station and site work along the east side of Indiana Street progresses with track installation at the northeast corner of 3rd and Indiana. Street restoration at the 3rd Street and Indiana Street intersection was completed during the first week of May 2008. However, LADOT approval is required to tie the striping plan into the City's 4th Street Bridge detour work that is occurring to the west.

Metro Gold Line Eastside Extension At-Grade Construction Along 3rd Street



3rd/Ford - Maravilla Station



3rd/Mednik - East Los Angeles Civic Center Station

Construction of the trackwork guideway and installation of the overhead catenary power poles is nearing completion and station canopies are being erected along 3rd Street.

Metro Gold Line Eastside Extension Pomona/Atlantic Station



View of Pomona/Atlantic Station to the east towards Atlantic Boulevard.



Systems installation work progresses at the Pomona/Atlantic Station.

Metro Gold Line Eastside Extension Pomona/Atlantic Station Parking

- On September 27, 2007, the Board approved funding for Engineering and Environmental Services for the design of a parking structure at the Pomona/Atlantic site.
- The design will include a multi-level parking structure with a minimum of 200 Transit-Dedicated parking spaces and provisions to allow for the future conversion for up to 7,500 square feet at the ground level for potential commercial space.
- The parking structure will be designed to the current zoning, building height and traffic restrictions and is subject to approval by the County of Los Angeles Department of Public Works.
- A design-build solicitation package will be advertised in July 2008 and Board approval for additional funding will be requested after the receipt of bids and acceptance of the lowest bidder. Construction NTP is scheduled for November 2008
- The parking structure will not be completed until after the forecasted July 2009 Revenue Operations Date (ROD) for the Metro Gold Line Eastside Extension Project. Based on our current schedule, the parking structure will open up five months after the July 2009 ROD.



Metro Gold Line Eastside Extension Pomona/Atlantic Site



Metro



Gold
Line

Metro Gold Line Eastside Extension Pomona/Atlantic Station Parking

PROJECT DATA

ZONING: C2-NEIGHBORHOOD BUSINESS ZONE (TELFORD) &
C3-UNLIMITED COMMERCIAL ZONE (ATLANTIC)

C2: 15,495 SF
C3: 34,605 SF

MAXIMUM HEIGHT LIMIT: C2: 35 FT
C3: 40 FT

SITE AREA: 50,100 SF

BUILDING COVERAGE: 28,500 SF

POTENTIAL FUTURE RETAIL: 8,000 SF

PARKING ANALYSIS:

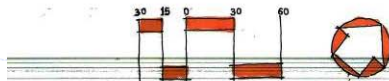
- METRO PARK & RIDE ONLY: 200-PER EIR
315-TOTAL PROVIDED
- METRO PARK & RIDE:
w/COMMERCIAL: 200-PER EIR
274-TOTAL PROVIDED



PRELIMINARY SITE PLAN

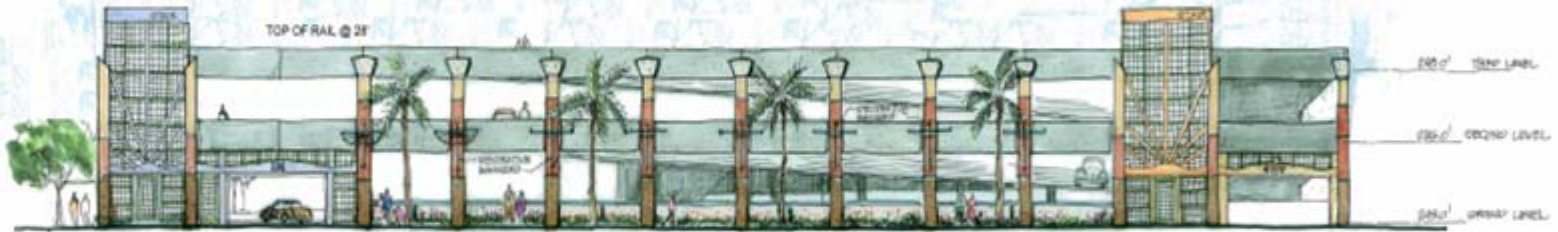


Metro



**Gold
Line**

Metro Gold Line Eastside Extension Pomona/Atlantic Station Parking



PRELIMINARY ELEVATION




Metro

**Gold
Line**

Metro Gold Line Eastside Extension



End of Presentation

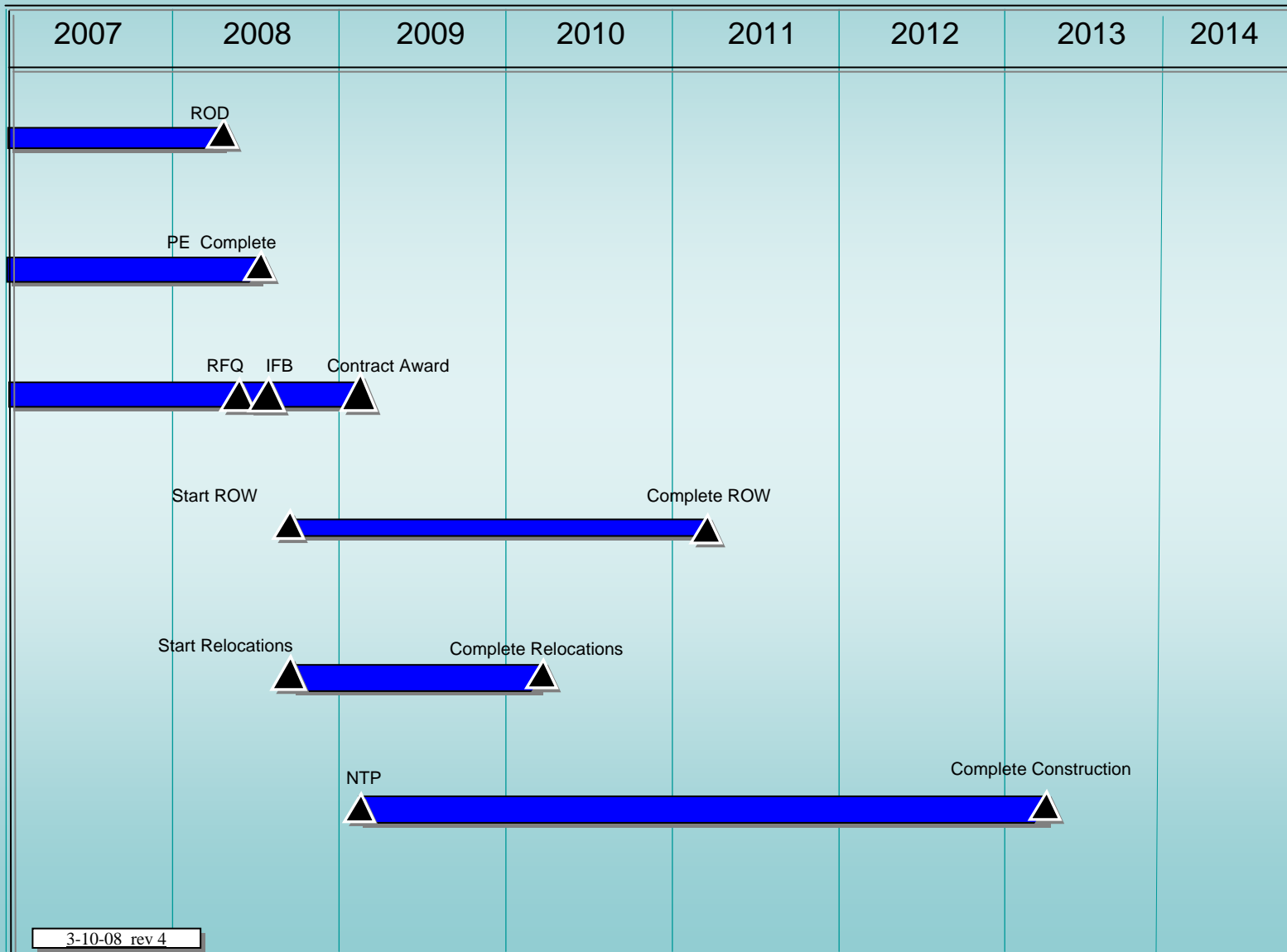


I-405 Sepulveda Pass Widening Project Project Update June 2008



I-405 Sepulveda Pass Project Summary Schedule

Calendar Year



3-10-08 rev 4



I-405 Sepulveda Pass Project Recent Accomplishments

- Caltrans issued Record of Decision (ROD) in April 2008
- Cooperative Agreement with Caltrans signed in May 2008
- Issued industry review documents in May 2008 and conducted industry review meeting on June 10, 2008



I-405 Sepulveda Pass Project Areas of Concern

- ✓ Estimated Project Budget may exceed funding
- ✓ Completion of freeway agreements between Caltrans and City and County of Los Angeles
- ✓ Significant utility issues (i.e., MWD water line)
- ✓ FHWA/Caltrans design approval process may cause schedule delays
- ✓ Contractor's concerns about Caltrans/LACMTA processes could result in fewer bids
- ✓ Lawsuits could delay project

Exposition Light Rail Transit Project



**Monthly Project Status Update
June 19, 2008**

PHASE 1



Design

- Design approximately 87% complete

Construction

- Construction approximately 9% complete

Construction Packages

- Negotiated 11 of the 19 construction packages

Third Party Agreements

- Executed 5 of the 8 third party agreements

CPUC Grade Crossing Applications

- June 6th: Authority submits testimony
- June 23rd: Public Participation Hearing on Harvard Pedestrian tunnel at Foshay Learning Center
- July 30th: UCA and NFSR submit testimony
- August 6th: LAUSD submits testimony
- Week of August 11th: Evidentiary Hearings
- October 7th: ALJ Proposed Decision
- November 6th: Possible CPUC Commission Decision

CPUC Grade Crossing Applications (cont.)

- Environmental work on the Farmdale Alternatives is proceeding.
- Farmdale crossing approval by the CPUC is required by September, 2008 in order not to delay the project.
- Grade-separated direction by the CPUC will result in significant delays to the project.



**Installation of VCP Sewer Line at
Exposition Blvd. and Watt Way**



Installation of Box Girders along Exposition and Flower



**Concrete Deck over Girders at
Exposition and Flower**



Soil Removal in Segment B



Temporary Pavement in Front of USC



**Installation of Chain Link Fence on K-rail along
Exposition Blvd, between Vermont and 7th**

Project Budget Summary

■ Construction Budget

- 11 of 19 construction packages have been negotiated in an amount totaling \$222 million
- Currently under running the revised construction budget

■ Project Budget

- All tasks are within the revised budget
- Remaining significant risks to the budget include:
 - Contracts yet to be negotiated (including Aerial Structures, Storage and Inspection Facility)
 - Contractor claims
 - Changes to Farmdale crossing
 - Changes to Harvard Pedestrian Tunnel
 - Change Orders

PHASE 2



Phase 2 Milestones				
Activity	Scheduled Completion Date	Forecast Completion Date	Status	Comments
Scoping Meetings & Report	Mar-07	May-07	Complete	
Screening of Alternatives	May-07	Oct-07	Complete	Delay in receiving ridership model from Metro
Administrative Draft to FTA	Oct-07	July-08		Delay due to need to recalibrate model received from Metro
Start Public Hearings on Draft DEIS/DEIR	Feb-08	Fall-08		FTA must sign off on Draft DEIS before document can be circulated
Board Adoption of LPA	May-08	Nov-08		
Request to enter Preliminary Engineering (PE)	May-08	Nov-08		

