

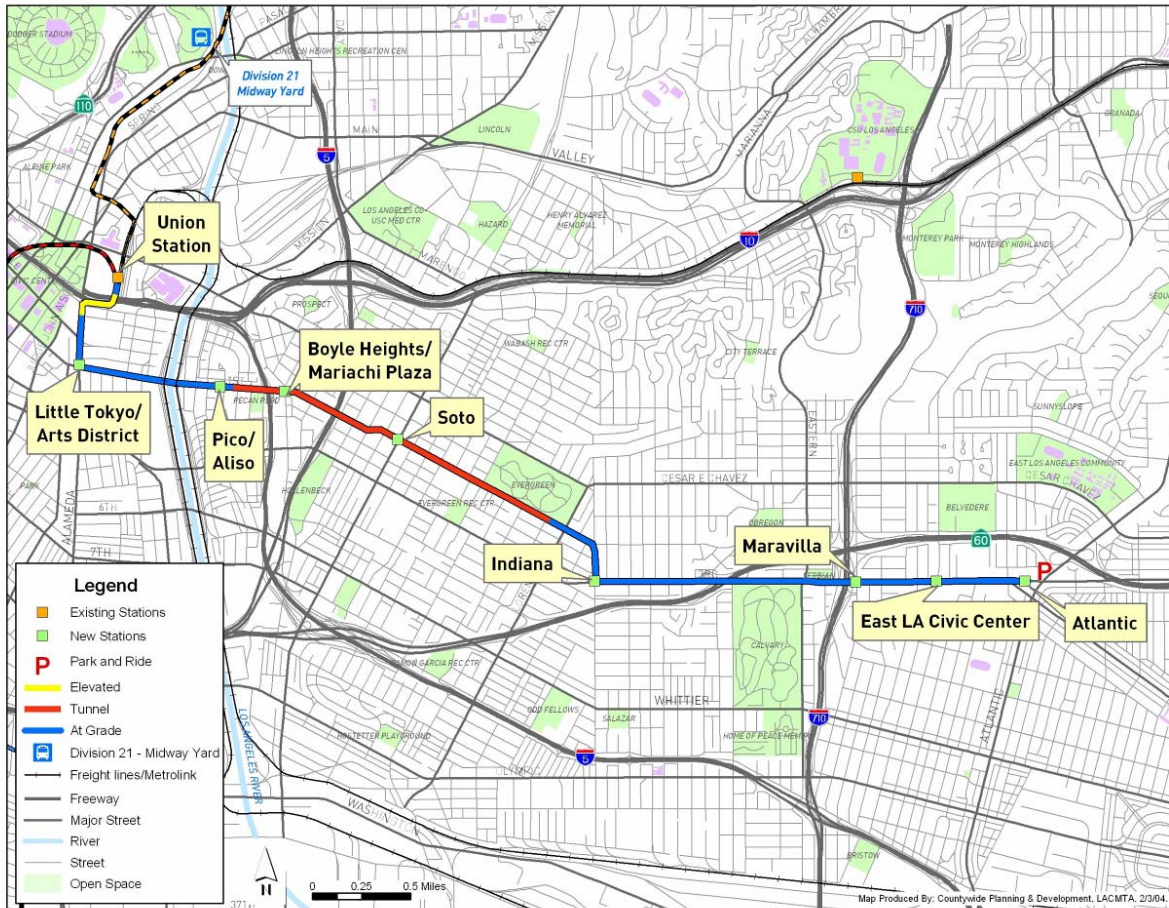
Chief Capital Management Officer Report

January 15, 2009

Metro Gold Line Eastside Extension

Project Update

January 15, 2009

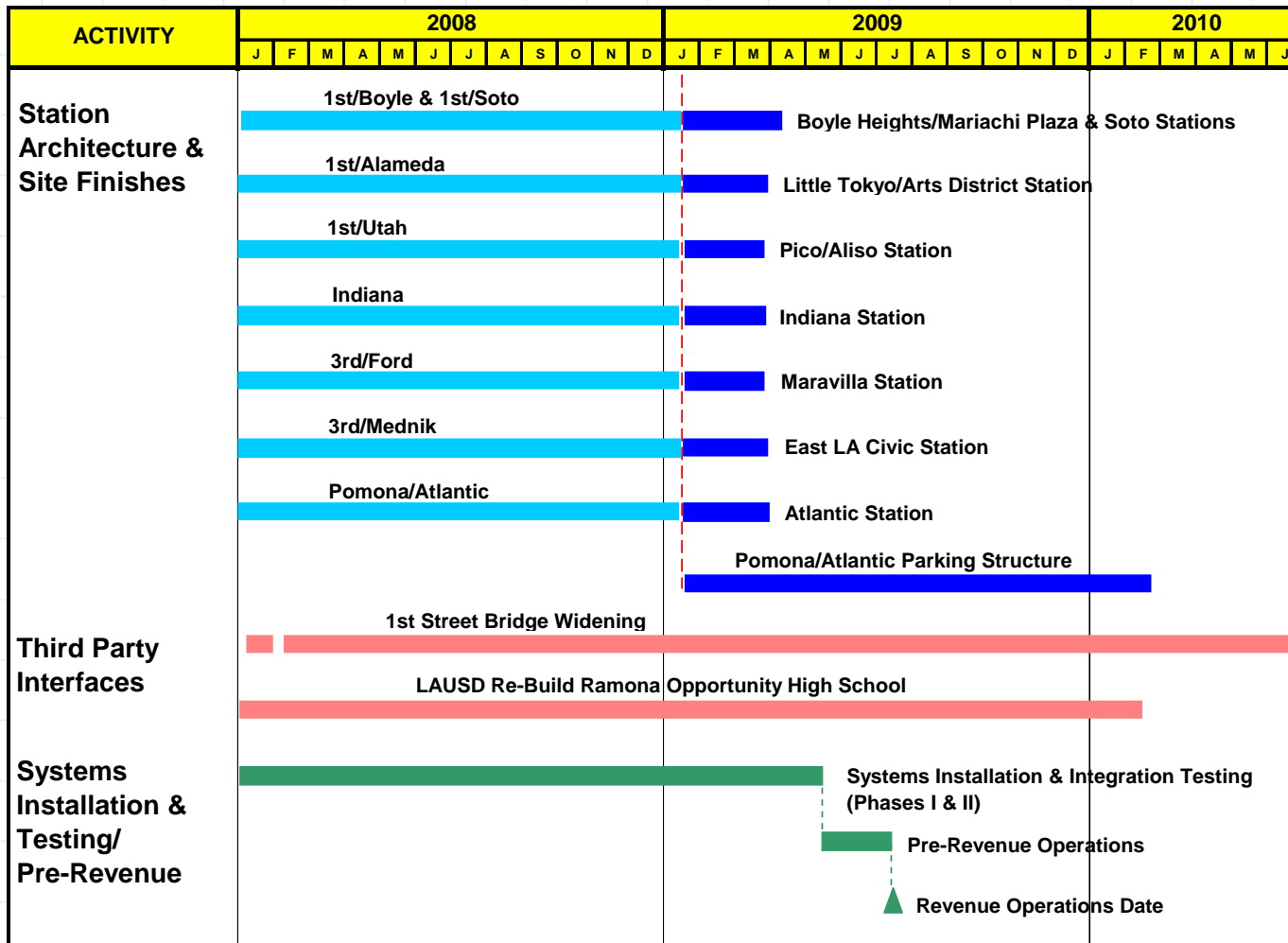


- 6 Mile Alignment
- 1.7 Miles of Tunnel
- 8 Stations (6 At-grade & 2 Underground)
- Park & Ride Facility
- Direct Connection to the Pasadena Metro Gold Line
- \$898.8 million
- On-Time/Within Budget
- Opens in Mid-2009

Metro Gold Line Eastside Extension Overall Construction Progress

- Construction began in July 2004. As of mid-January 2009, the Project is over 93% complete.
- The Contractor has worked over 3.7 million hours without a lost-time accident.
- Trackwork installation along the entire six-mile alignment is complete.
- Construction of the two underground stations at 1st/Boyle and 1st/Soto is 89% complete.
- Construction of the six at-grade stations is 74% complete.
- Systems installation is 88% complete.

Metro Gold Line Eastside Extension Overall Construction Progress Remaining Work

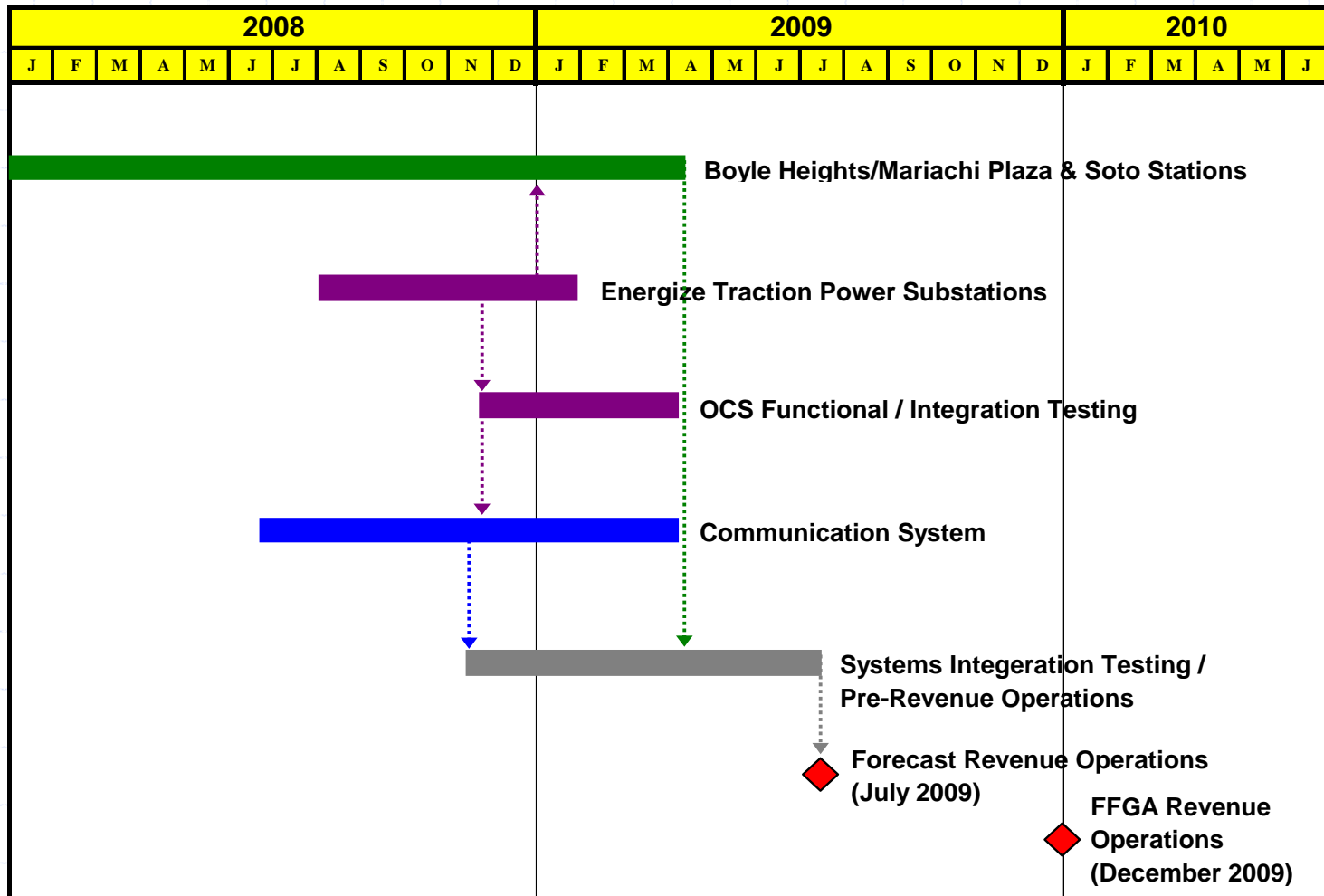


Metro



Gold Line

Metro Gold Line Eastside Extension Schedule Status (Critical Path)



Metro

Gold Line

Metro Gold Line Eastside Extension Light Rail Transit Stations



Little Tokyo/
Arts District



Pico/Aliso



Boyle Heights/
Mariachi Plaza



1st/Soto



Maravilla



Indiana Station



East Los Angeles
Civic Center

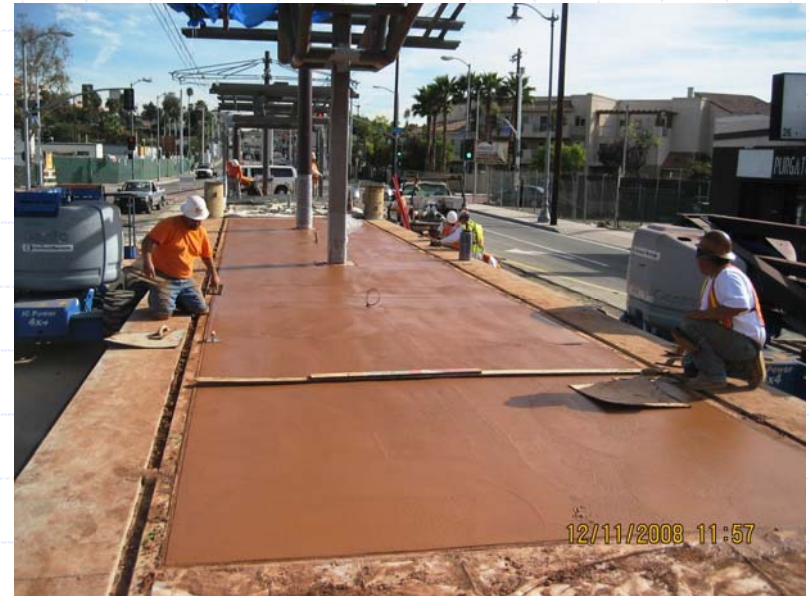


Pomona/Atlantic

Metro Gold Line Eastside Extension At-Grade Station Construction 1st/Alameda and 1st/Utah



Little Tokyo/Arts District Station -
Northeast corner of 1st/Alameda.



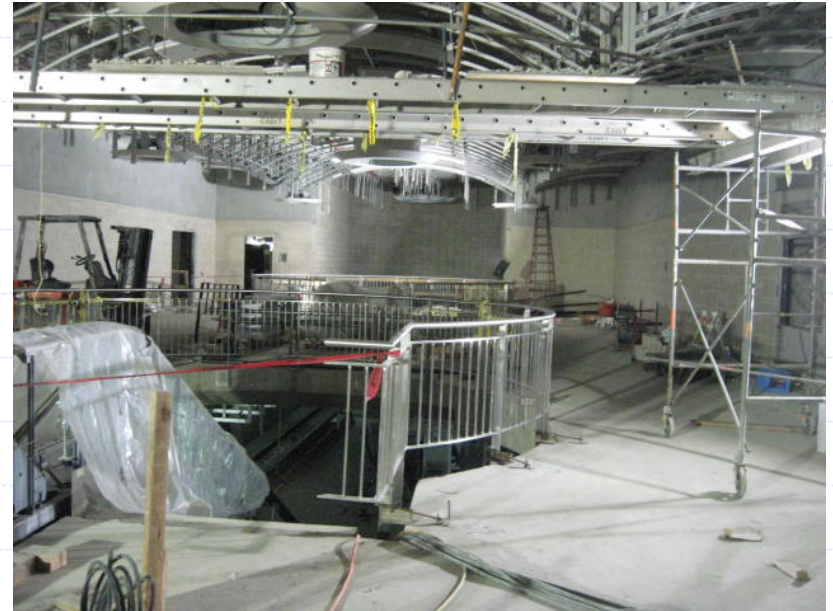
Pico/Aliso Station – View east near
1st/Utah towards Boyle Heights.

Construction of the at-grade stations along the west side of the alignment includes concrete site work, canopy installation and systems installation.

Metro Gold Line Eastside Extension Underground Station Construction Boyle Heights/Mariachi Plaza Station



A portion of the Station Entrance Plaza was completed in time for the annual Mariachi Festival in November 2008.



Stairs, escalators, elevators, architectural finishes, ceilings and ductwork are being installed in the underground station.

Metro Gold Line Eastside Extension Underground Station Construction 1st/Soto Station



Soto Station - Southwest corner of 1st/Soto where the station entrance is being constructed on the plaza level.



Soto Station – Interior work in the underground rooms progresses as work on the surface structures continues.

Metro Gold Line Eastside Extension At-Grade Station Construction



Indiana Station

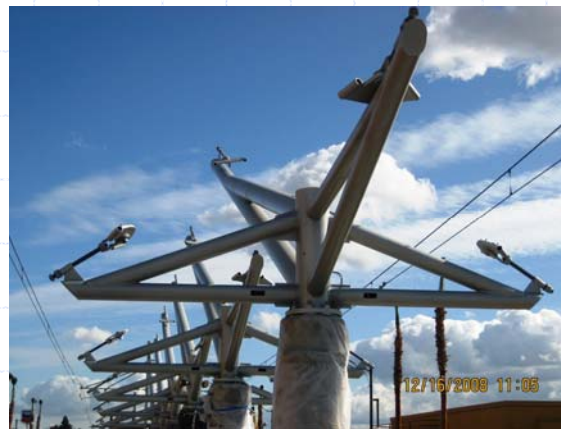


Maravilla Station

Construction of the stations from 1st/Indiana and along 3rd Street in East Los Angeles is well underway with the erection of canopies and the installation architectural finishes.



East LA Civic Center Station



Pomona/Atlantic Station

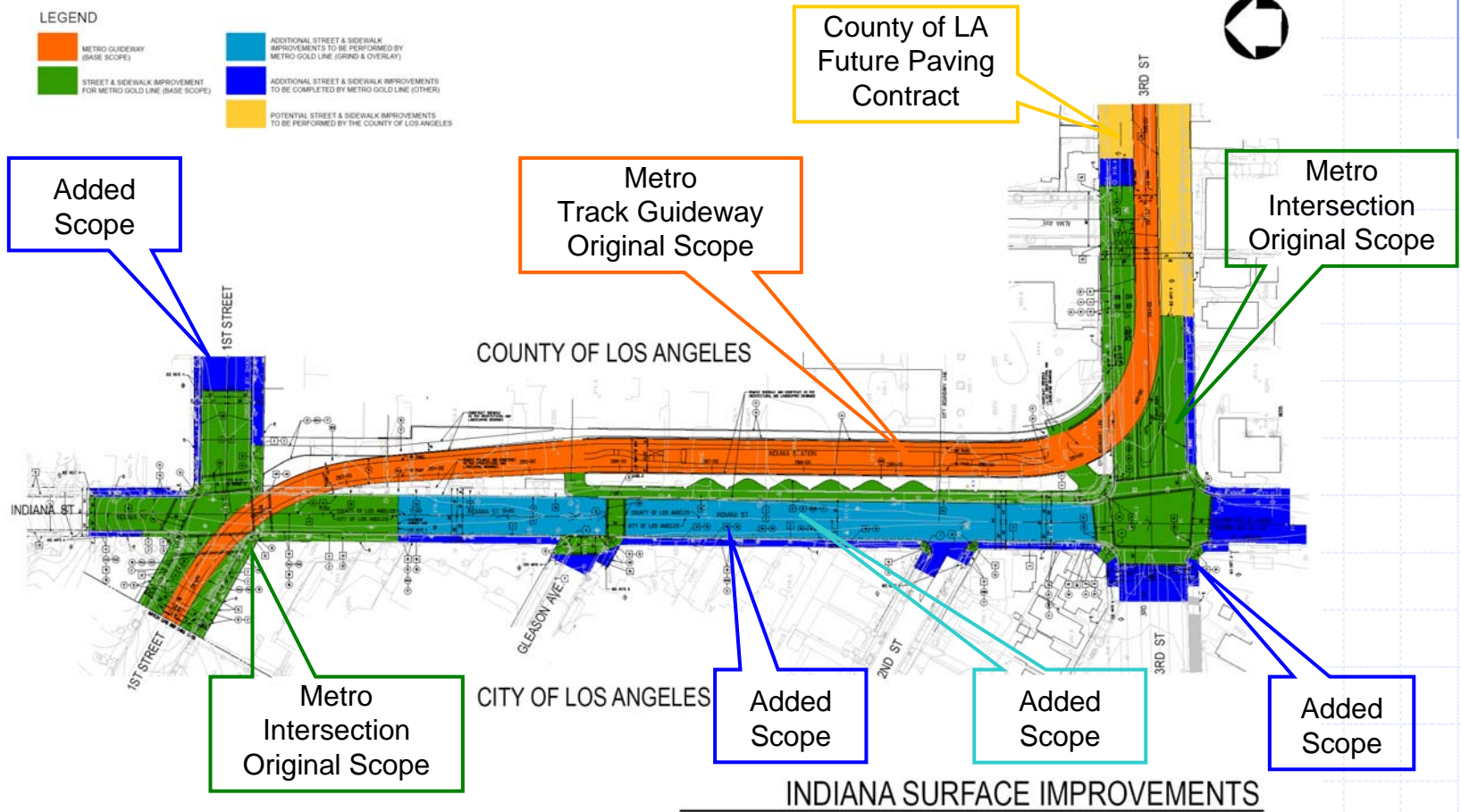


Metro



**Gold
Line**

Metro Gold Line Eastside Extension Indiana Station Street and Sidewalk Improvements



Metro Gold Line Eastside Extension Indiana Station Street and Sidewalk Improvements



Indiana Street view north towards 1st Street.



Indiana Street view south towards 3rd Street.

The construction of the sidewalk and other street improvements along the west side of Indiana Street which began in December 2008, will be completed by the end of January 2009.

Metro Gold Line Eastside Extension Indiana Station Street and Sidewalk Improvements



View south along the east side of Indiana Street towards 3rd Street.



View south along the west side of Indiana Street towards 3rd Street.

The contractor worked the weekend before Christmas to mitigate delays caused by the rain, in order to complete the sidewalk in front of the homes and businesses along the west side of Indiana Street before the holidays.

Metro is coordinating with the County of LA and City of LA to tie-in the limits of the County work and Metro's work in the final repaving of Indiana Street.

Metro Gold Line Eastside Extension County of Los Angeles 3rd Street Resurfacing Project



- The County of LA has begun the first phase of a two-phase street resurfacing project along 3rd Street.
- Phase 1 (from Atlantic Boulevard to the 60 Freeway will be completed by August 2009).
- Phase 2 from the 60 Freeway to Indiana Street) has not been awarded but is planned to be completed by the end of 2009.
- Metro is in the process of turning over its completed work including sidewalks, landscaping, lighting, streets and traffic signals to the County.



Metro Gold Line Eastside Extension



End of Presentation



Metro



**Gold
Line**

Metro Gold Line Eastside Extension

Feasibility of Four Quadrant Gates



**Construction Committee Meeting
10:30 a.m.
January 15, 2009**

Metro Gold Line Eastside Extension Feasibility of Four Quadrant Gates **CURRENT STATUS**

- Metro has begun coordination with City LADOT and County Department of Public Works staff.
- The PMA Consultant has been issued a Task Order to assist in the feasibility study.

Metro Gold Line Eastside Extension Feasibility of Four Quadrant Gates **NECESSARY STEPS**

Step 1 – Determine Feasibility (\$80,000-\$100,000) 4-6 months

- Board Authorization to Fund Step 1**
- Conceptual Layout**
- City & County Review**
- CPUC Feedback**

Step 2 – Implementation Phase (\$20-\$30 million) 3-6 years

- Determine Funding Source**
- Board Authorization to Fund the Project**
- Environmental Analysis**
- CPUC Hazard Analysis Studies**
- Preliminary Engineering & Final Environment Approval**
- Final Design**
- City & County Design Approvals**
- CPUC Crossing Application Approval**
- Procurement Process**
- Grade Crossing Equipment Installation & Testing**
- CPUC Approval to Operate**

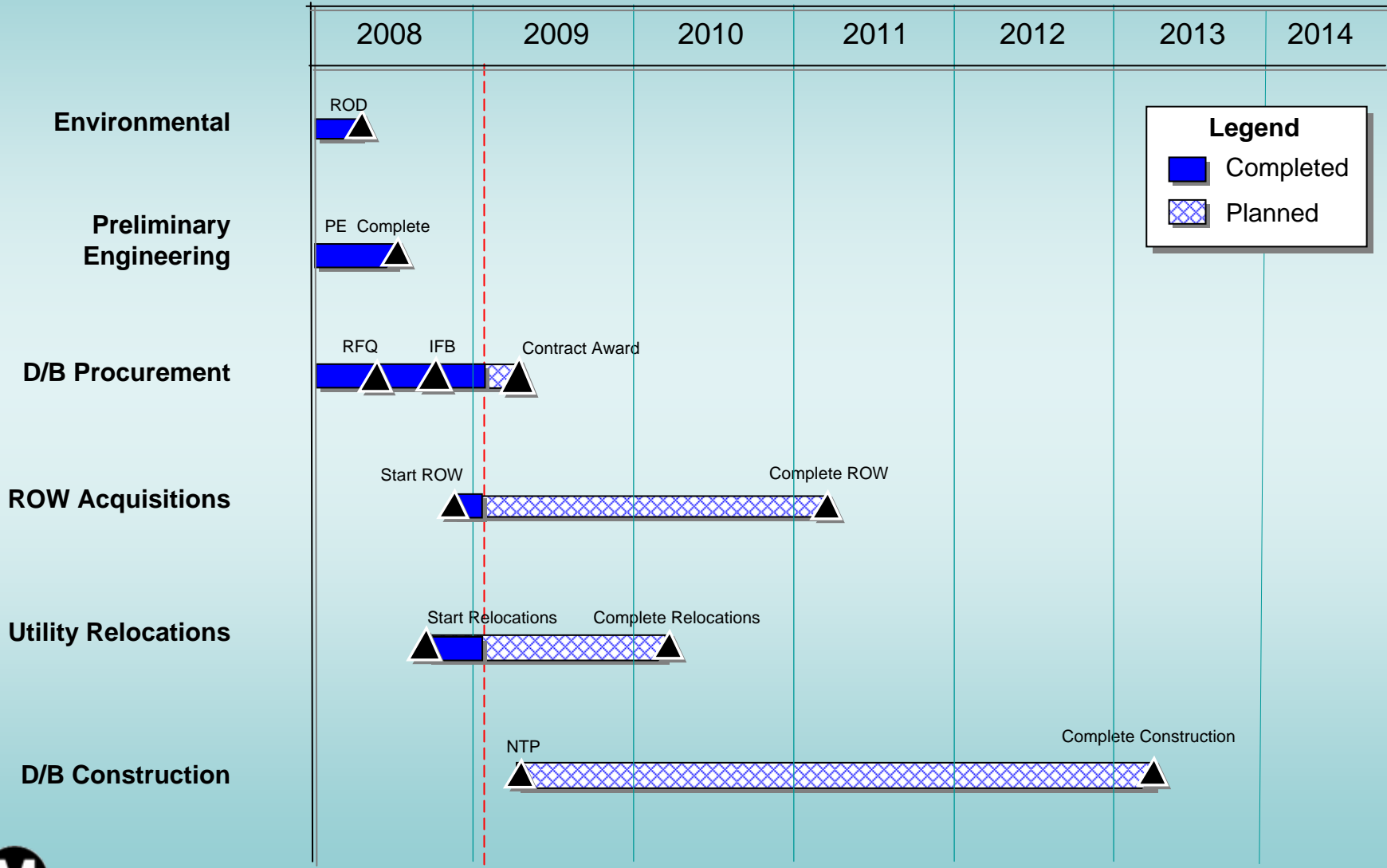
I-405 Sepulveda Pass Widening Project Project Update January 2009





I-405 Sepulveda Pass Project Summary Schedule

Calendar Year



Legend

- Completed
- Planned



I-405 Sepulveda Pass Project Recent Accomplishments

- Issued Amendment No. 3 to the IFB on December 19, 2008.
- Continued responding to questions from bidders.
- Metro Board approved selection of Project Director who will begin this month.
- Working with the City of LA to resolve design/construction issues.
- Negotiating with Caltrans to finalize field staffing levels.



I-405 Sepulveda Pass Project Areas of Concern

- ✓ State funding uncertainty.
- ✓ Estimated Project Budget may exceed funding.
- ✓ Significant utility issues (i.e., MWD water line).
- ✓ FHWA/Caltrans design approval process may cause schedule delays.
- ✓ Contractor's concerns about Caltrans/Metro processes could result in more expensive bids.
- ✓ Caltrans has not resolved design conflicts with GSA, City of LA and homeowners.

Exposition Light Rail Transit Project



**Expo Board Presentation
Monthly Project Status Update
December 20, 2008**

PHASE 1



Design

- Baseline Design is approximately 95% complete
- Venice/Robertson design is approximately 85% complete

Construction

- Construction is approximately 27% complete

Construction Packages

- Negotiated 14 of the 19 construction packages

Third Party Agreements

- Executed 5 of the 8 third party agreements

CPUC Grade Crossing Applications

- On October 22nd, ALJ issued his proposed decision denying the pending applications at Harvard and Farmdale in favor of constructing pedestrian overcrossings at these two locations.
- Assigned commissioner issued a draft revised decision that still denied both applications, but did not mandate the construction of a pedestrian overcrossing at Harvard.
- Another commissioner issued an alternative decision that denies our application for Farmdale, but does approve our application for Foshay
- CPUC commission is now scheduled to rule on January 29th



Installation of track drain along the ROW



Sewer repair work at Flower and Exposition



Preparation for jacking operation at Exposition and Western



Concrete encasement of 18" PVC track drain



National Bridge Girder Closure Pours



Project Budget Summary

■ Construction Budget

- 14 of 19 construction packages have been negotiated in an amount totaling \$347 million
- Currently within the revised construction budget
- Successfully negotiated a \$2 million credit for the use of a liner in lieu replacing a 44-inch sewer pipe in contract package A2

■ Project Budget

- All tasks are within the overall project budget
- Remaining significant risks to the budget include:
 - Contracts yet to be negotiated (including Storage and Inspection Facility)
 - Any significant contractor claims
 - Changes to the Farmdale and Harvard crossings
 - Any significant owner related project delays

PHASE 2



Phase 2 Milestones		
Activity	Forecast Completion Date	Status
Scoping Meetings & Report	May - 07	Complete
Screening of Alternatives	Oct - 07	Complete
Administrative Draft to FTA	Nov - 08	No longer applicable
Conversion to CEQA Document	Dec - 08/Jan - 09	Finalizing
Public Comment Period/Hearings on DEIR	Jan/Feb - 09	
Board Adoption of Preferred Alternative	Mar - 09	
Board Adoption of Final EIR	Oct - 09	
Design-Build Contract Award	Jan - 2010	

