

Metro Rail Operations Report

February 19, 2009

Metro Rail – December Weekday Boardings

	Dec. 2007	Dec. 2008	
– Blue Line	68,843	72,010	+4.6%
– Green Line	34,155	34,133	-0.1%
– Gold Line	18,177	22,390	+23.2%
– Red/Purple Lines	<u>127,020</u>	<u>139,229</u>	<u>+9.6%</u>
– Total Rail System	248,195	267,762	+7.9%



AnsaldoBreda Cars



14 LRVs in service in January.

Metro Staff Has Taken On More Engineering and Construction Work

- **Developed Contract Technical Specifications**
 - Light Rail Vehicles
 - Substation
 - Digital Radio Conversion
- **Major Replacement of DWP/Metro Traction Power Substation Equipment**
- **Rebuilding of Grade Crossings**
- **Constructing New Grade Crossings for the Expo Line**

Metro staff are developing a joint 119 new car / 69 car rebuild solicitation to meet Measure R Light Rail Projects to 2018

Task Name	1st Quarter 2008			2nd Quarter 2008			3rd Quarter 2008			4th Quarter 2008				1st Quarter 2009			2nd Quarter 2009			3rd Quarter 2009			4th Quarter 2009			1st Quarter 2010			2nd Quarter 2010				
	J	F	M	A	M	J	J	A	S	O	N	D	J	F	M	A	M	J	J	A	S	O	N	D	J	F	M	A	M	J			
Initial Assessment of P865/P2020 LRVs	█	█	█	█	█	█	█	█	█																								
P865/P2020 Overhaul Specification Development										█	█	█	█	█	█																		
P3000 Specification Development													█	█	█																		
Overhaul & New LRV RFP & Contract Development													█	█	█																		
Draft Solicitation Documents Issued for Industry Review															✓																		
Update Solicitation Documents, based on Industry comments																█	█	█															
Release RFP for P865/P2020 Overhaul and new P3000 LRVs																					✓												
Proposals due																								✓									
Review, negotiation & selection																									█	█	█						
Board Recommendation																																	✓
Notice to Proceed																																	✓
First Rebuilt P865 due	September 2011																																
First two P3000 LRVs due on-site	July 2012																																

The LRV Specifications may consider Seating Changes to accommodate more riders

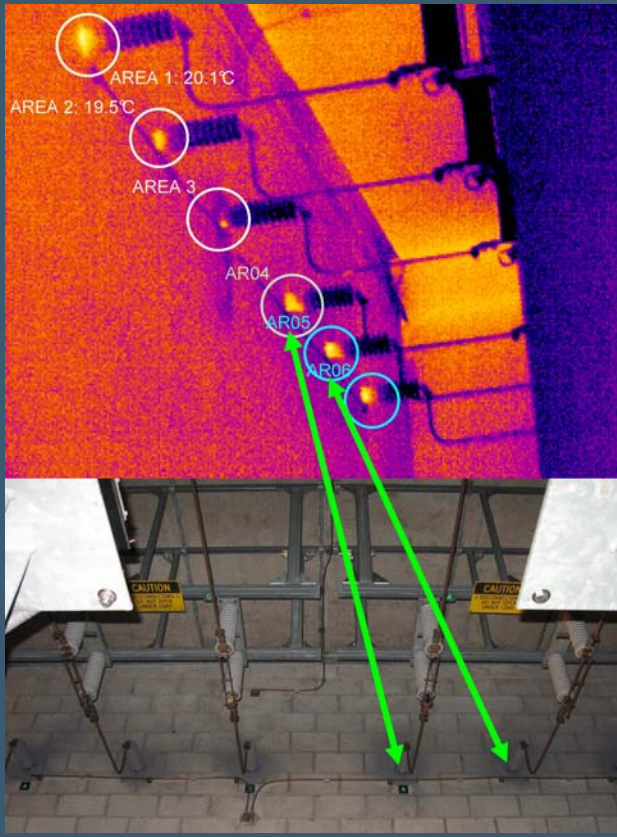


Stimulus Package Proposal

- To Replace 20 Blue Line Substations
- Internal Staff Completed the Specifications
- Ready for Solicitation



Major Replacement to Metro Red Line Substation bushings inside DWP Facility eliminating a potential ground and resulting equipment damage



Update on Grade Crossing Rebuilding

2007

- 48th Street
- 119th street
- 124th street
- 130th street
- El Segundo Blvd.

2008

- Stockwell
- 20th Street
- 24th Street
- 130th street
- 55th Street
- 92nd Street
- Western Avenue (Expo)
- Denker Street (Expo)

2009

- 108th Street
- Nadeau
- Vernon Ave.
- 130th street
- 103rd Avenue
- Century Blvd.
- Manville Ave.
- EXPO Activities on Flower will hold up work on the remaining 8 crossings.



Exposition Line / Blue Line Tie-in

Blue Line to be affected from Vernon Ave. to 7th/St. Metro Center. Major projects include:

- Junction at Washington Bl. & Flower St.
- Crossover on Flower St., between Pico & Venice Bls.
- Crossover on Washington Bl., between Maple Ave. & Trinity St.
- Storage and Inspection Facility (proposed) for 12 cars at Washington Bl. & Long Beach Ave.
- Crossover (proposed) on Washington Bl., between Hooper St. and Long Beach Ave.
- Crossover (proposed) south of Washington Bl. & Long Beach Ave.
- Crossover (proposed) relocation south of 20th St.
- Overhead Contact System changes to support trackwork
- Train Control upgrades between Pico and 41st St.

Exposition Line / Blue Line Tie-in – Service Impact

1) For all work on Flower St. and Washington Blvd., Blue Line service is projected to be impacted:

- Friday night 9pm through Sunday night – at least 26 weeks, Metro has offered all weekends between July-December 2009– Expo is to provide a construction schedule*
- Some weeknights, 9pm through close of service*

2) During work periods, Blue Line service will not operate into downtown Los Angeles, stopping at either Washington or San Pedro Stations

- Metro Bus replacement service will run from the temporary terminal to all other stations on Washington Bl. and Flower St. ending at 7th St./Metro Center*

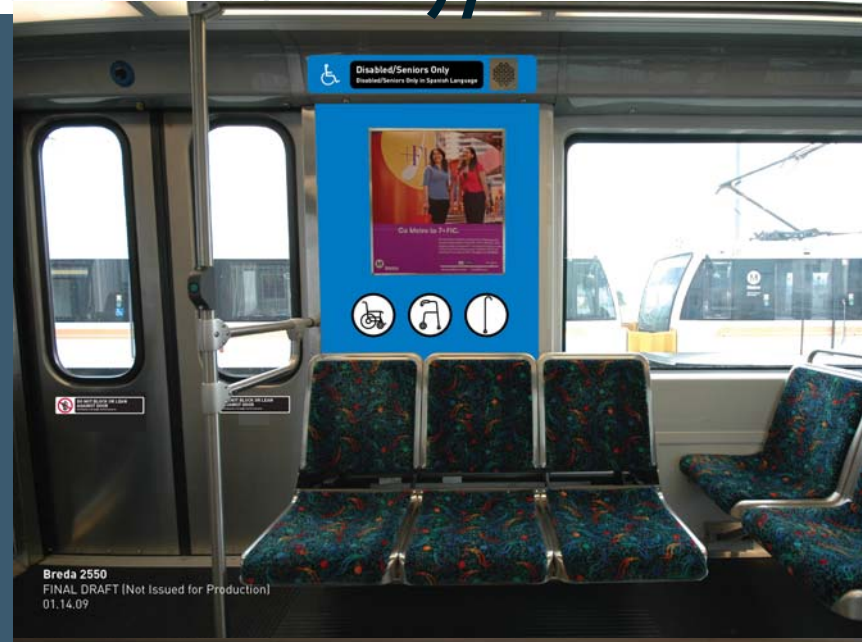
3) The timeline and schedule for work associated with the Storage and Inspection Facility south of San Pedro Station has not been developed as of this date.

4) The cost of this bus service to support the Tie In has not been identified

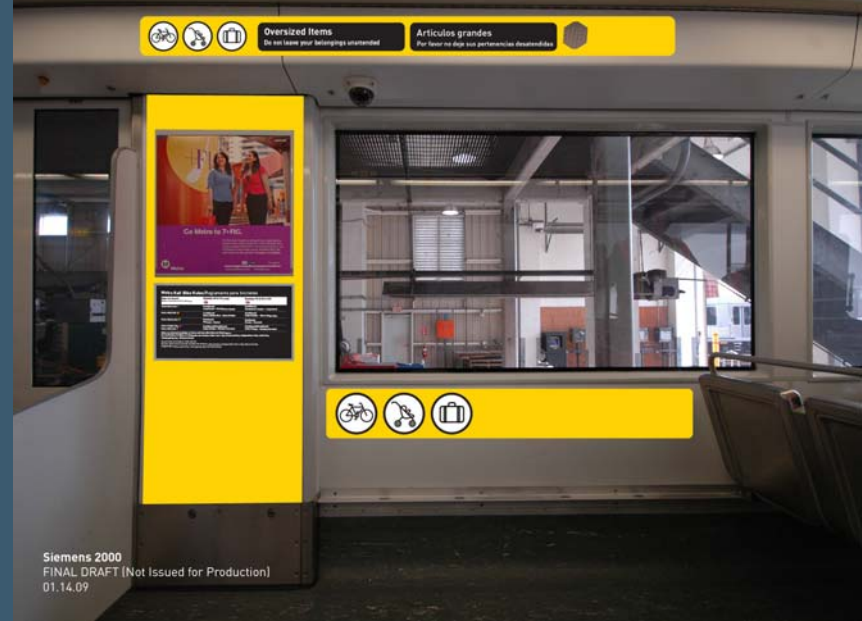
BCB Materials are on Order for installation on all Light Rail Systems



Marketing Materials for Bikes, Luggage, and Strollers for Gold Line Trial Program Planned for February/March



Breda 2550
FINAL DRAFT (Not Issued for Production)
01.14.09



Siemens 2000
FINAL DRAFT (Not Issued for Production)
01.14.09

Special Events

- **Academy Awards**

Sunday, February 22. Red Line Hollywood/Highland Station closed all day.

- **Pasadena Marathon**

Sunday morning, March 22. Gold Line

- **Long Beach Grand Prix**

Saturday and Sunday, April 18-19, 2009 Blue Line

- **May Day**

Friday, May 1, 2009. Expected marches in Downtown Los Angeles Red, Purple and Blue Lines

Blue Line Grade Crossing Rehabilitation

- **February 20-21-22** – Grade crossing rehabilitation at Nadeau St. Single track operations between Imperial and Florence throughout the weekend; 20-minute headways. (Postponed from Feb. 6-7-8 due to rain)
- **March 6-7-8** – Grade crossing rehabilitation at Vernon Ave. Single track operations between Washington and Florence throughout the weekend; 20-minute headways.
- **April 3-4-5** – Grade crossing rehabilitation at 103rd St. Single track operations between Imperial and Florence throughout the weekend; 20-minute headways.